

7th February 2012

Mirvac
Level 26, 60 Margaret Street
SYDNEY NSW 2000

Attention: Brett Crellin

Email:

EXISTING TELECOMMUNICATIONS SERVICES (7 RAILWAY ST, CHATSWOOD)

Dear Brett

The proposed planter/tree zone on Railway Street will have a major impact on the existing in-ground services, especially on the Telstra underground network.

From our previous work in this area, this Telstra network includes major Sydney-Brisbane fibre links from the nearby Chatswood Telephone Exchange.

The proposed tree zone would require the relocation of the Telstra network including major inter-city fibre links, man-holes and a bank of 9x100mm telecommunications conduits from their standard allocation as determined by the Streets Opening Conference into a compressed shared trench with Ausgrid High Voltage Cabling.

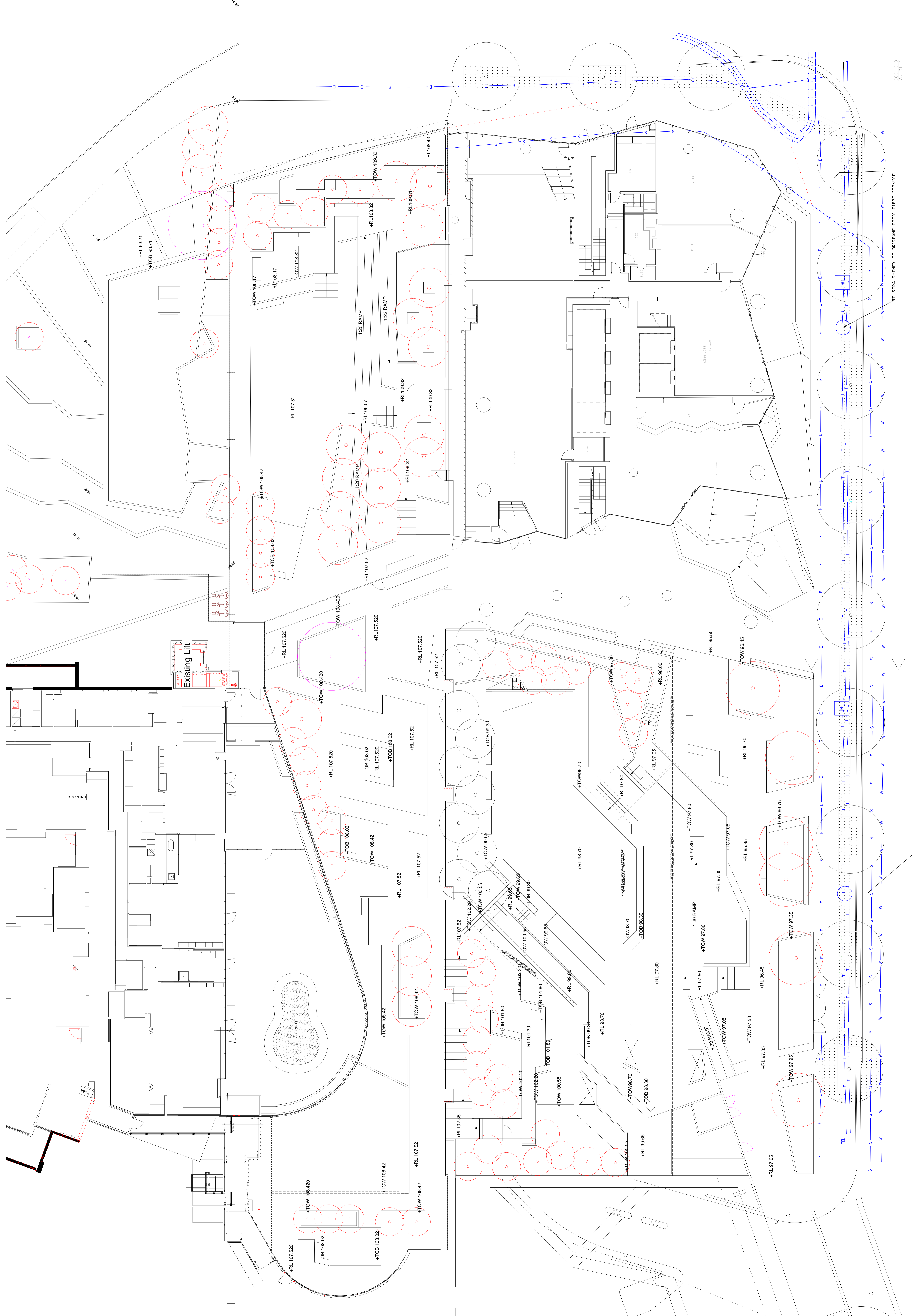
The loss of available verge width for services would leave insufficient space for these major authorities' network services to share a common trench. There are extreme cost penalties for any damage to these major Telstra links due to loss of telecommunication services.

All stakeholders/authorities impacted by the proposed tree planting zone on Railway Street need to be fully consulted prior to proceeding with any works.

Yours faithfully
Webb Australia Group (NSW) Pty Ltd



per Marc Pirozzi
Director

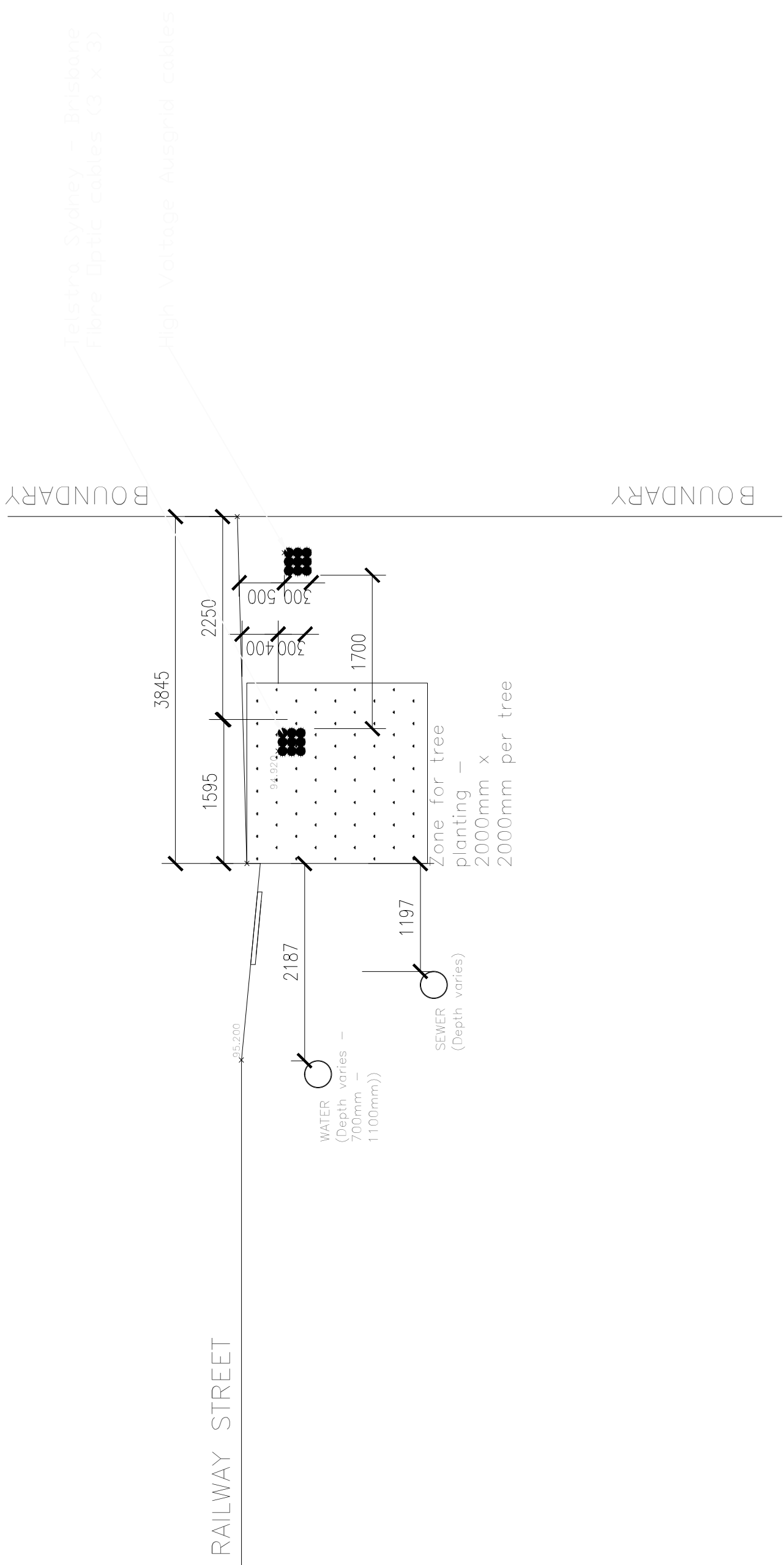


Existing Lift

SAND PIT

TELSTRA SYDNEY TO BRISBANE OPTIC FIBRE SERVICE

050-011
25-01-12

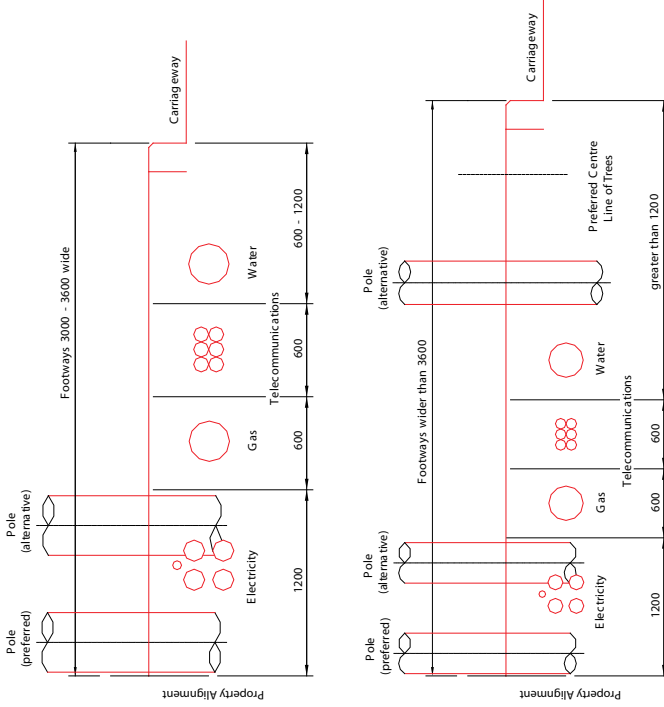


NOTES:

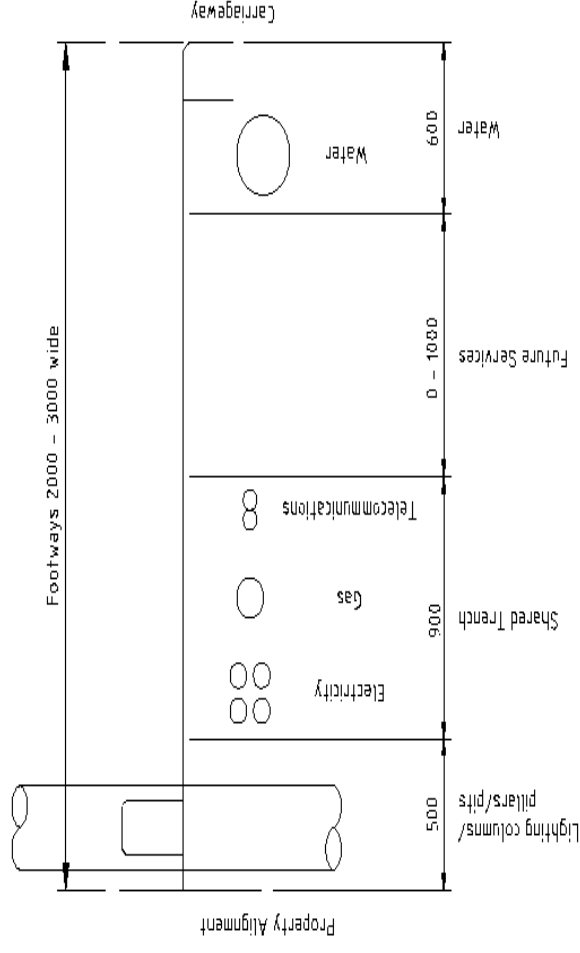
1. Service locations and dimensions derived from Dial Before You Dig (31-03-2011).
2. RLs of services are approximate only. Further exploratory surveying is recommended prior to excavation in affected areas to confirm service depths and locations

TYPICAL SECTION THROUGH RAILWAY STREET

6.2 STREETS DEDICATED AFTER 1 JANUARY 1991



6.3 ALLOCATION OF SPACE IN NARROW FOOTWAYS



Notes:

1. The allocation of space in narrow footways, whether new or pre-existing, was adopted for the first time in the 2002 edition of the Guide to Codes and Practices for Streets Opening.
2. Where it is intended to lay more than one type of Service, shared trenching should be used. However, this does not always allow for large structures and trunk lines.
3. Where a Utility/Service Provider providing underground Services wishes to encroach on space allocated to another Utility/Service Provider, it should consult and seek agreement with the other. Both Utility/Service Providers should record such encroachments on their respective mapping systems.
4. Footways of width less than 2000 mm require special consideration to accommodate Services. Contact the Conference Secretariat for information concerning such designs, community title situations and other special situations. Refer to clauses 3.5 and 6.6.
5. The variable allocation of 0-1000 mm provides for future extensions.
6. The preferred position for poles, pillars, cabinets and street lighting columns is adjacent to the property alignment.
7. Where the erection of power poles in the 0-500 mm allocation is impracticable, these may be located in the water allocation by agreement with the appropriate Utility/Service Provider.
8. No specific allocation for trees can be identified for footways up to 2000 mm wide. Consultation with Utility/Service Providers is required and due regard must be given to tree species.
9. Pillars/pedestals/Service pits etc should be located in a position that is set back from street intersections.
10. See Section 6.6 for guidance on new poles and pole replacements.

Notes:

1. These allocations apply throughout NSW except where noted in Section 6.4.
2. Where a Utility/Service Provider providing underground Services wishes to encroach on space allocated to another Utility/Service Provider, it should consult and seek agreement with the other. Both Utility/Service Providers should record such encroachments on their respective mapping systems.
3. The narrower water allocation shown may not be sufficient to include recycled water mains.
4. The preferred position for poles or street lighting columns is adjacent to the property alignment. Alternative positions are shown.
5. Where the erection of power poles in the 0-1200 mm allocation is impracticable, these may be located in the water allocation by agreement with the appropriate Public Authority.
6. No specific allocation for trees can be identified for footways up to 3600 mm wide. Consultation with Utility/Service Providers is required and due regard must be given to tree species.
7. Pillars/pedestals/Service pits etc should be located in a position that is set back from street intersections.
8. See Section 6.6 for guidance on new poles and pole replacements.