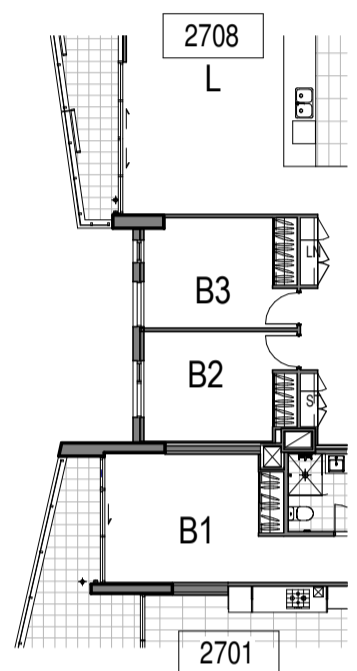
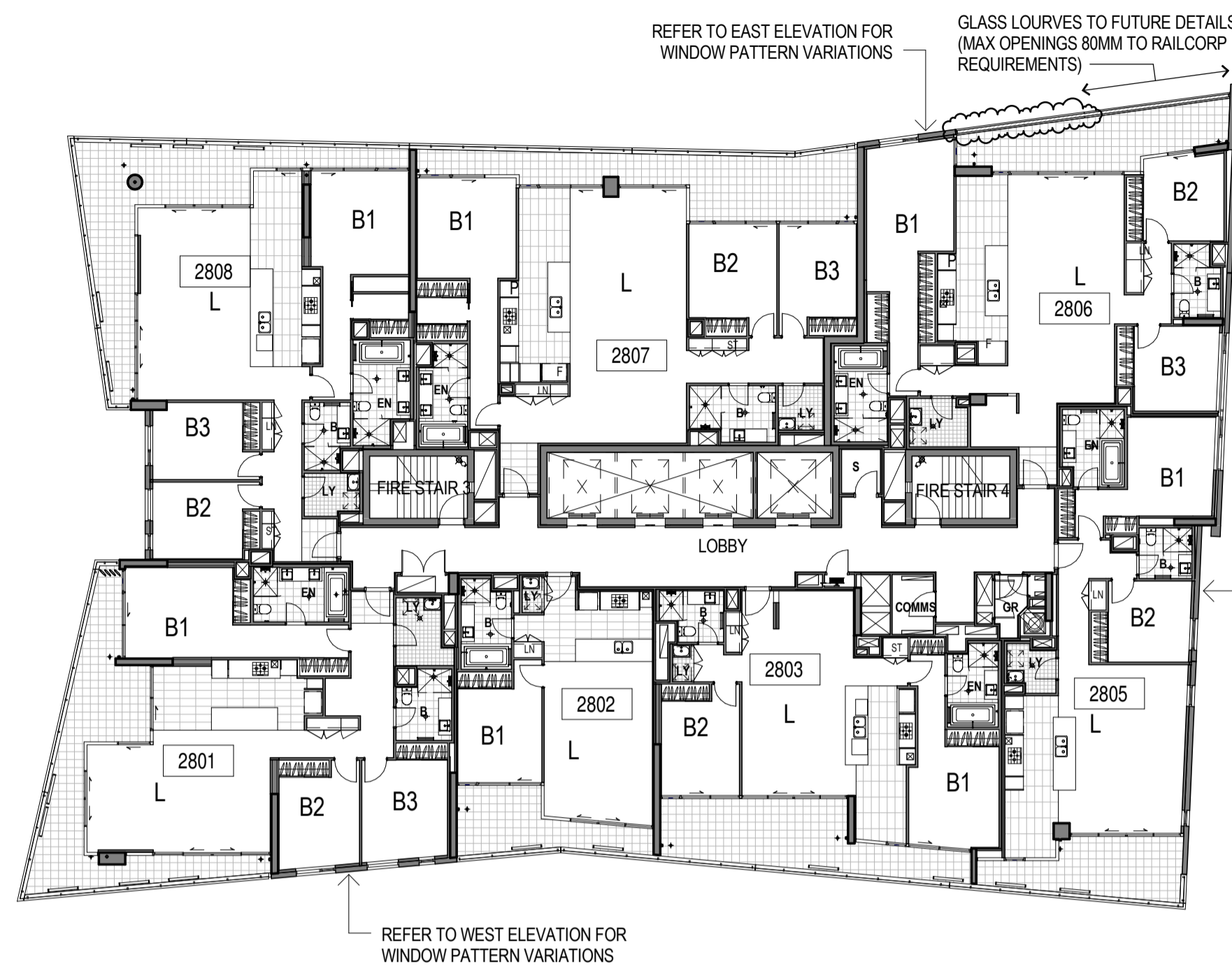


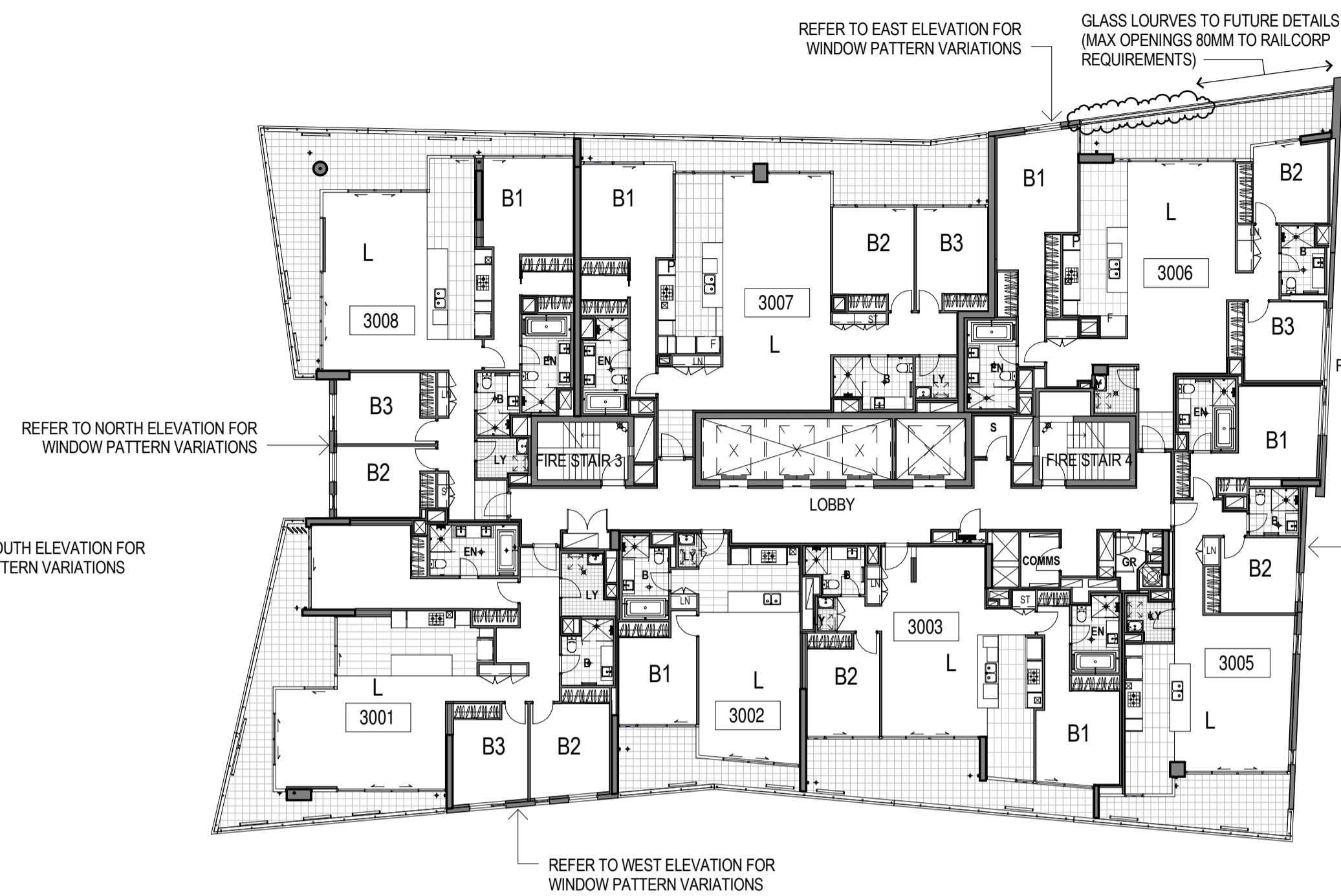
**LEVELS 33 - 37
PART PLAN
VARIATION**



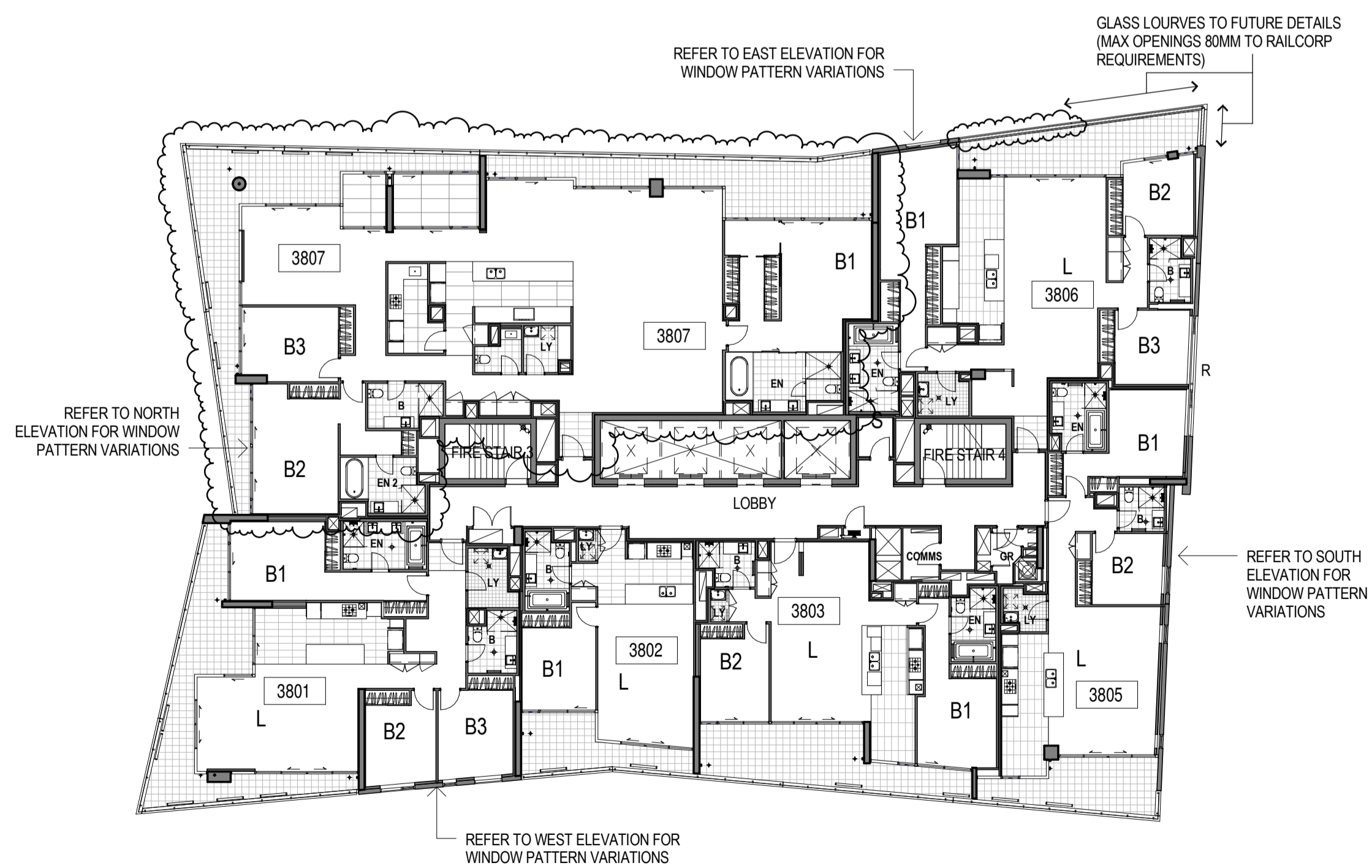
**LEVELS 27, 29, 31
PART PLAN
VARIATION**



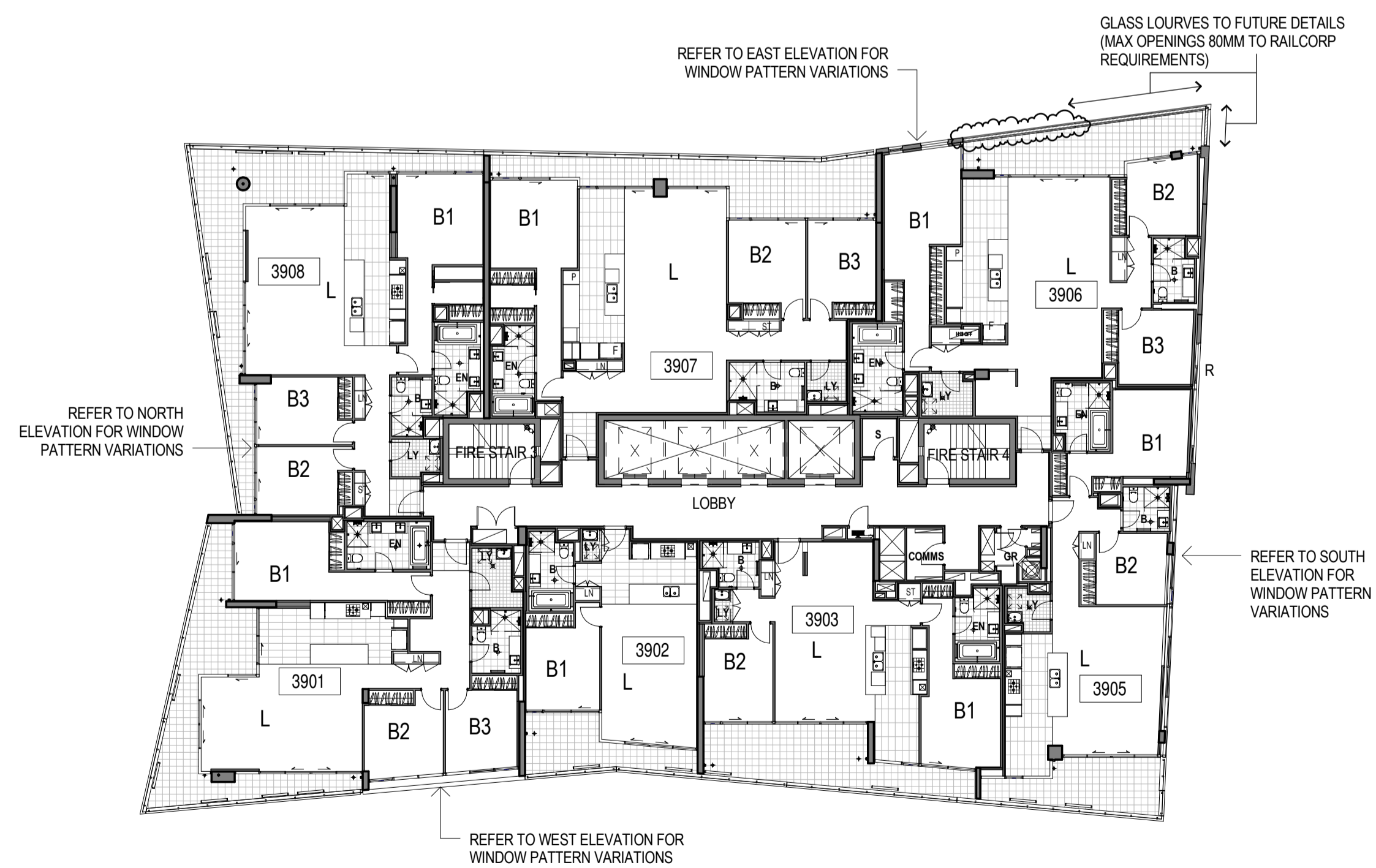
LEVELS 26, 28 & 32



LEVEL 30



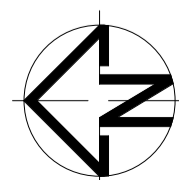
LEVEL 38



LEVELS 39 & 41

NOTES: GENERAL ARRANGEMENT PLANS

- 1. DESIGN RESOLUTION**
 - 1.1 The drawings represent general architectural intent for the purpose of this development application only.
 - 1.2 The internal layout is shown indicatively and is subject to further design development.
 - 1.3 The dimensions shown are general only and are subject to further design resolution.
 - 1.4 Location of car park entry point is general only and will be confirmed and dimensioned at later stage.
 - 1.5 The size and position of louvre sun screens is indicative and shown in open and closed positions.
 - 1.6 Ceiling RL (where shown) indicates general ceiling design level only, which does account for services bulkheads or similar partial ceiling protrusions.
 - 1.7 Landscape component is shown indicatively only and subject to further design development at later stage.
 - 1.8 Location of plant, equipment and services on drawings is general and indicative only, and does not include minor elements, such as vent pipes, flues, aerials, etc.
- 2. GRAPHIC PRESENTATION**
 - 2.1 Colours presented on drawings are generic only and indicative of the architectural design intent. Some colour distortion may also occur in the printing process.
 - 2.2 Do not scale off drawings.
- 3. EXISTING STRUCTURES AND SERVICES**
 - 3.1 Extent and location of existing structures and services is according to the available survey information and will need to be verified on site at later stage.
 - 3.2 All unchanged site levels are as per the existing survey information
- 4. GARBAGE ROOM**
 - 4.1 Doors to residential garbage room to be fitted with a magnamatics hold open device with push button release.
- 5. RAILCORP REQUIREMENTS**
 - 5.1 Screens and window restrictors as noted on plans and elevations
 - GSR - Glass Screen to Railcorp requirements
 - R - Window restricted to 80mm opening as per Railcorp requirements



REV	DATE	DESCRIPTION
1	21.07.10	ISSUED FOR PART 3A PROJECT APPLICATION
2	03.08.10	80mm WINDOW RESTRICTOR AND GLASS SCREEN AMENDED
3	NOV.10	ISSUED FOR PPR
4	10/11/2011	ISSUED FOR SECTION 75W - M001

project:
7 Railway Street, Chastwood

architect:
Mirvac Design
architects
planners
interior designers

Level 26, 60 Margaret St.
Sydney, NSW, 2000
tel. 02 9080 8000
fax. 02 9080 8181
Mirvac Design Pty Ltd.
ABN 78 003 355 153



title:
Level 26 - 39 & 41 Floor Plans

drawn:
approved:
job no: 1737
date: NOV 2010
scale @ A1: 1 : 200
drawing no: PPR 1012
rev: 4