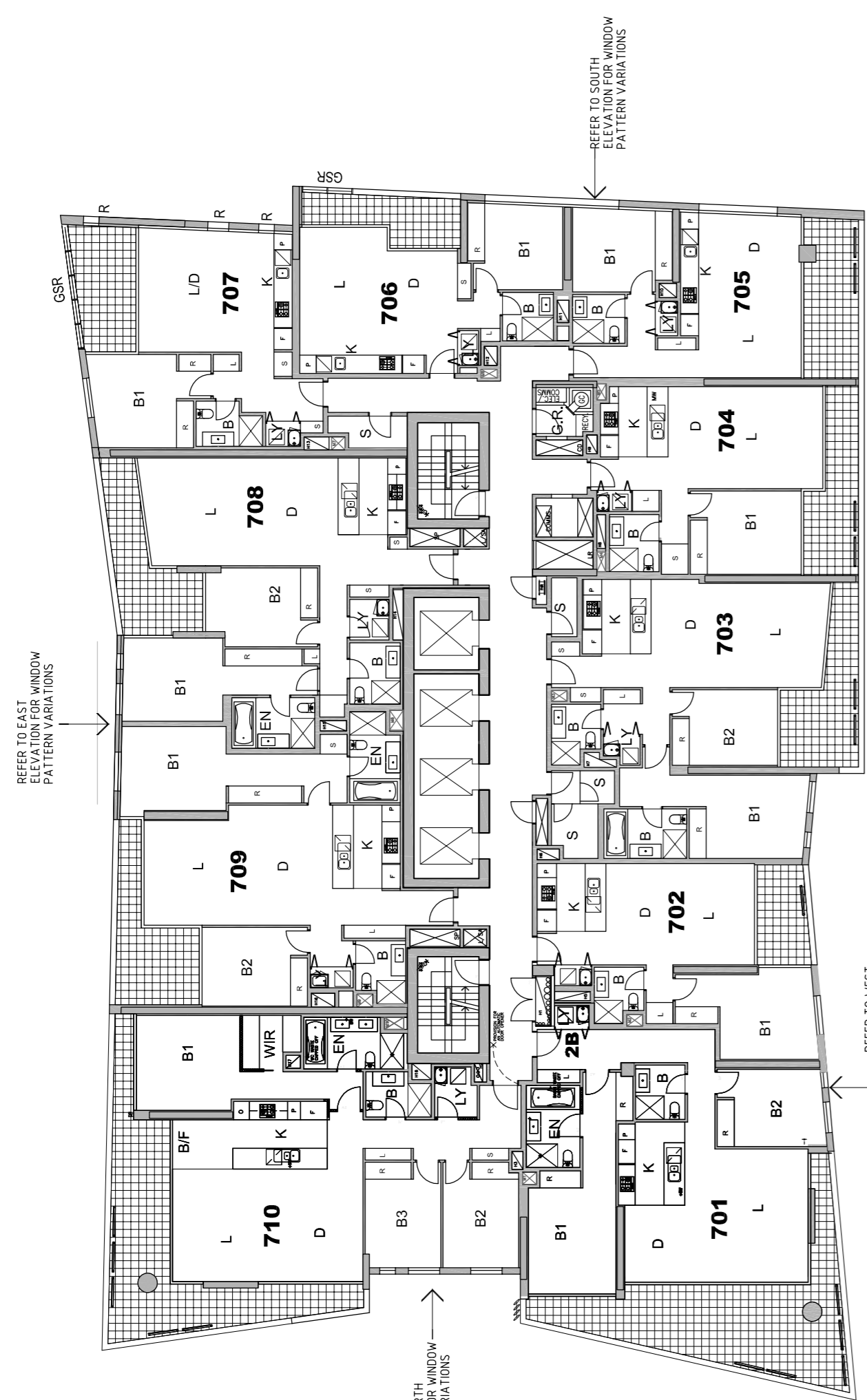
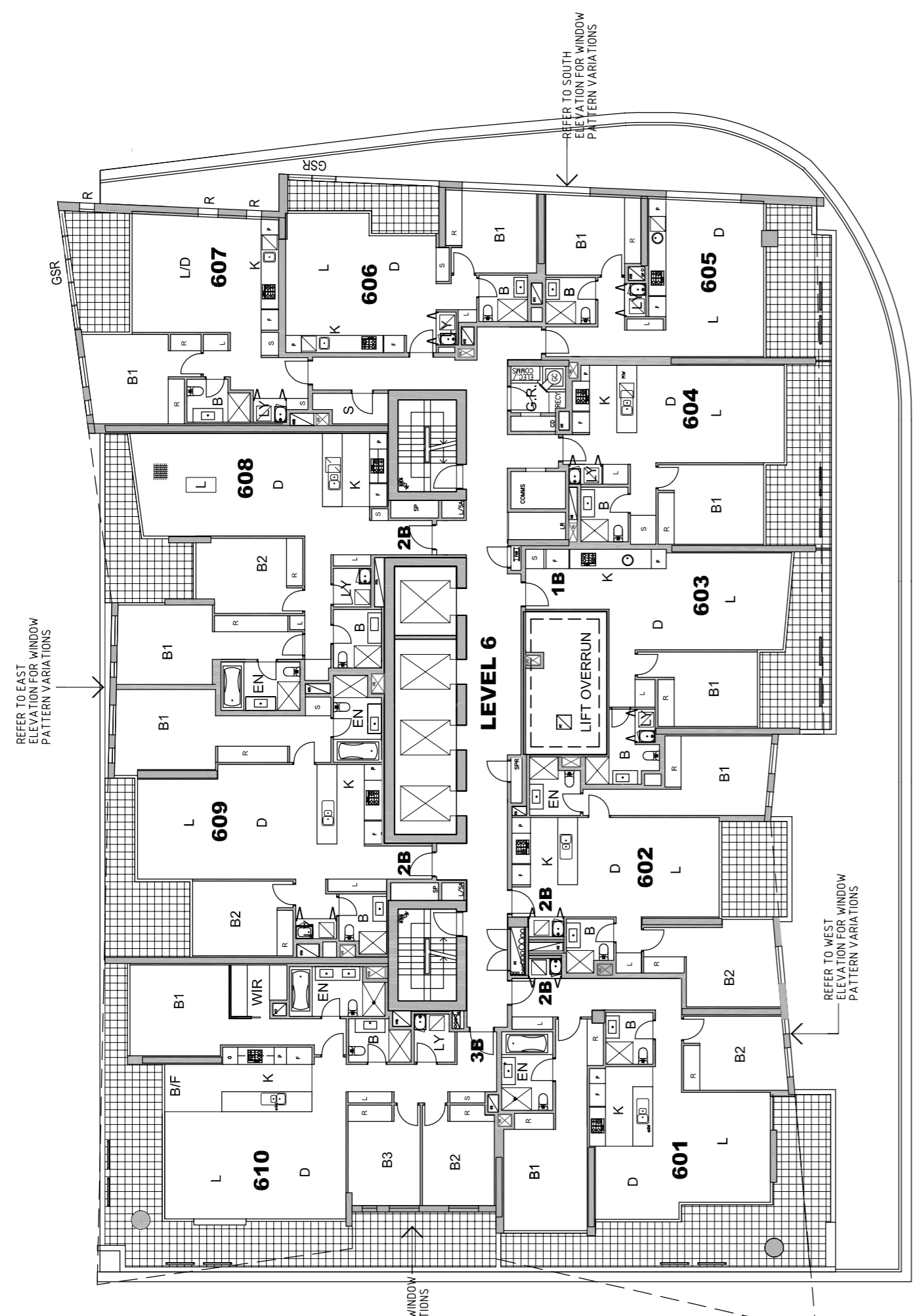


NOTES: DA

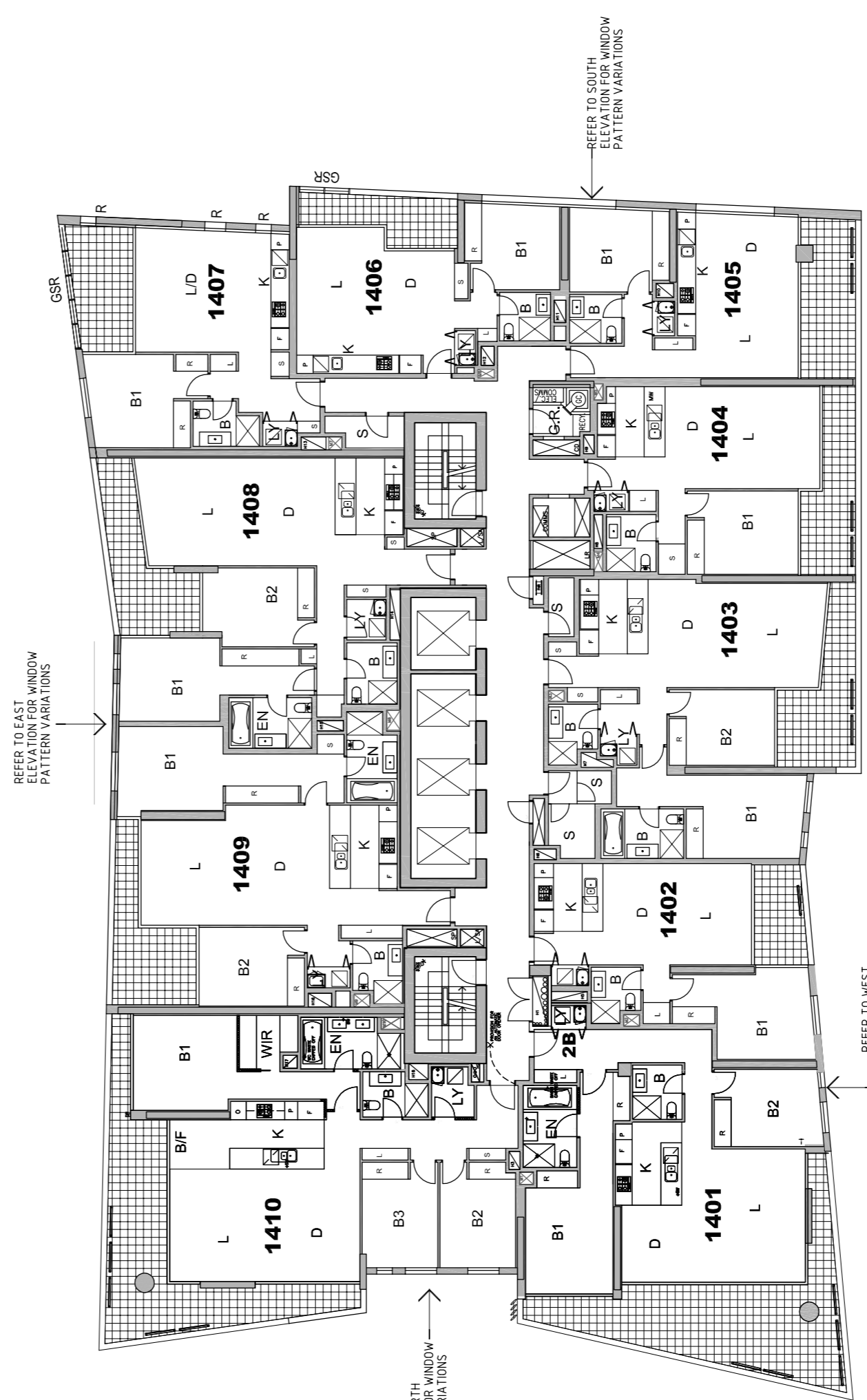
- DESIGN RESOLUTION**
 - The drawings represent general architectural intent for the purpose of this development application only.
 - The internal layout is shown indicatively and is subject to further design development.
 - Dimensions shown are general only and are subject to further design resolution.
 - Location of car park entry point is general only and will be confirmed and dimensioned at later stage.
 - The size and position of four sun screens is indicative and shown as general only and will be confirmed and dimensioned at later stage.
 - Colour R (refer shown) indicates general ceiling design level only, which does account for services, bulkheads or similar partial ceiling protrusions.
 - Landscape component is shown indicatively only and subject to further design development at later stage.
 - Colour S (refer shown) on drawings is general and indicative only, and does not include minor elements, such as vent pipes, flues, aerials, etc.
- GRAPHIC PRESENTATION**
 - Colours presented on drawings are generic only and indicative of the design intent. Some colour deviation may also occur in the printing process.
 - Do not scale off drawings.
- EXISTING STRUCTURES AND SERVICES**
 - Extent and location of existing structures and services is according to available survey information and will need to be verified on site at later stage.
 - All unchanged site levels are as per the existing survey information.
- GARBAGE ROOM**
 - Doors to residential garbage room to be fitted with a magnetics interlocking door.
- RAIL CORP REQUIREMENTS**
 - Screens and window restrictors as noted on plans and elevations.
 - GSR - Glass Screen to Railcorp requirements.
 - R - Window restricted to 80mm opening as per Railcorp requirements.



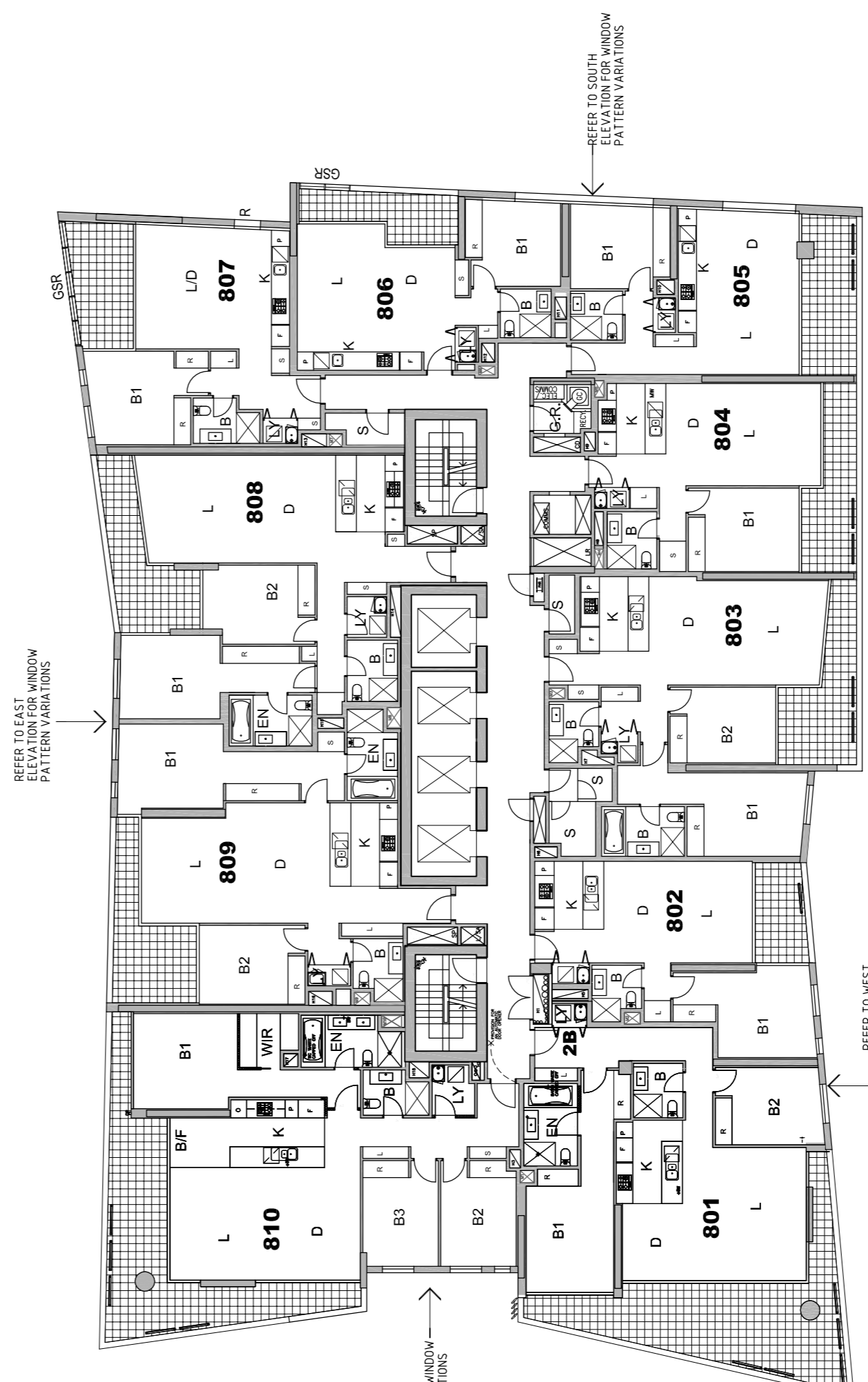
LEVEL 7, 9, 11 & 13



LEVEL 6



LEVEL 14



LEVELS 8, 10 & 12

