

SIGNATURES, SEALS and STATEMENTS of intention to dedicate public roads, to create public reserves, drainage reserves, easements, restrictions on the use of land or positive covenants.

PURSUANT TO SEC. 88B OF THE CONVEYANCING ACT 1919 IT IS INTENDED TO CREATE:

- 1. EASEMENT FOR SUPPORT AND SHELTER (WHOLE OF LOT).
2. EASEMENT FOR FIRE STAIRS AND PASSAGES (1B).
3. EASEMENT FOR SERVICES (WHOLE OF LOT).
4. EASEMENT FOR ACCESS VARIABLE WIDTH (1A) (LIMITED IN STRATUM).
5. EASEMENT TO USE LOADING DOCK AND SERVICE CORRIDOR (1C) (LIMITED IN STRATUM).
6. EASEMENT FOR PUBLIC RECREATION PURPOSES (1D) (LIMITED IN STRATUM).
7. EASEMENT FOR ACCESS VARIABLE WIDTH (1E) (LIMITED IN STRATUM).

Use PLAN FORM 6A for additional certificates, signatures, seals and statements

Crown Lands NSW/Western Lands Office Approval

I.....in approving this plan certify (Authorised Officer) that all necessary approvals in regard to the allocation of the land shown herein have been given
Signature:.....
Date:.....
File Number:.....
Office:.....

Subdivision Certificate

I certify that the provisions of s.109J of the Environmental Planning and Assessment Act 1979 have been satisfied in relation to:

the proposed..... set out herein (insert 'subdivision' or 'new road')

* Authorised Person/General Manager/Accredited Certifier

Consent Authority:
Date of Endorsement:
Accreditation no:
Subdivision Certificate no:
File no:

* Delete whichever is inapplicable.

DRAFT PLAN
PRINTED 15 NOV 2010
(ISSUE 7)

Registered:
Title System:
Purpose:

PLAN OF PROPOSED SUBDIVISION OF LOT 6 IN D.P.1058962

LGA: WILLOUGHBY
Locality: CHATSWOOD
Parish: WILLOUGHBY
County: CUMBERLAND

Surveying and Spatial Information Regulation, 2006

I, TASY MORAITIS of DENNY LINKER & Co., Level 5, 17 Randle St, Surry Hills, 2010 a surveyor registered under the Surveying and Spatial Information Act, 2002, certify that the survey represented in this plan is accurate, has been made in accordance with the Surveying and Spatial Information Regulation, 2006 and was completed on:.....

The survey relates to (specify the land actually surveyed or specify any land shown in the plan that is not the subject of the survey)

Signature Dated:
Surveyor registered under the Surveying and Spatial Information Act, 2002
Datum Line:
Type: Urban/Rural

Plans used in the preparation of survey/compilation

(if insufficient space use Plan Form 6A annexure sheet)

SURVEYORS REFERENCE: 080406 D-SUB

* OFFICE USE ONLY

DEPOSITED PLAN ADMINISTRATION SHEET

Sheet 2 of 2 sheet(s)

PLAN OF PROPOSED SUBDIVISION OF LOT 6 IN
D.P.1058962

DRAFT PLAN
PRINTED 15 NOV 2010
(ISSUE 7)

* OFFICE USE ONLY

Registered:

Subdivision Certificate No:

Date of Endorsment:

SURVEYORS REFERENCE: 080406 D-SUB

EASEMENTS VIDE D.P.1058962:

- (C) - RIGHT TO ATTACH PANELS & STRUCTURES
- (D) - RIGHT OF SUPPORT VARIABLE WIDTH
- (J) - EASEMENT FOR DRAINAGE OF WATER 2.5 WIDE & VARIABLE WIDTH (LIMITED IN HEIGHT TO R.L.96)
- (K) - EASEMENT FOR DRAINAGE OF WATER 2.5 WIDE (LIMITED IN HEIGHT TO R.L.98)
- (L) - EASEMENT FOR OVERLAND FLOW 2.5 WIDE & VARIABLE (LIMITED IN HEIGHT TO R.L.98)
- (M) - EASEMENT FOR SERVICES (LIMITED IN HEIGHT)
- (N) - RIGHT OF ACCESS VARIABLE WIDTH LIMITED IN DEPTH TO THE LOWER LIMIT OF LOT 6 AS SHOWN AND LIMITED IN HEIGHT TO R.L.105.85.
- (R) - EASEMENT FOR PUBLIC ACCESS (LIMITED IN HEIGHT TO R.L.98.7) (TO BE MODIFIED IN ACCORDANCE WITH THE TERMS OF THE EASEMENT)
- (RA) - EASEMENT FOR ROCK ANCHORS
- (SB) - EASEMENT FOR SUPPORT (SB) (LIMITED IN HEIGHT TO R.L.96)
- (V) - EASEMENT FOR SERVICES UNDER THE RAILWAY LINE (LIMITED IN DEPTH TO R.L.92 & LIMITED IN HEIGHT TO R.L.98)
- (W) - EASEMENT FOR LATERAL DRIVE 6 WIDE (LIMITED IN DEPTH TO R.L.92 & LIMITED IN HEIGHT TO R.L.98)
- (Z) - EASEMENT FOR RECREATION (LIMITED IN HEIGHT TO R.L.96)

RES - DENOTES RAILWAY ENCLOSURE STRUCTURE

PROPOSED WHOLE OF LOT EASEMENTS:

- 1) EASEMENT FOR SUPPORT & SHELTER BURDENS THE WHOLE OF LOTS 1 & 2.
- 2) EASEMENT FOR FIRE STAIRS & PASSAGES AFFECT THE WHOLE OF LOT 1 BELOW R.L.112.8 & THE PARTS OF LOT 2 NOTED ON THE PLAN.
- 3) EASEMENT FOR SERVICES AFFECTS THE WHOLE OF LOTS 1 & 2.

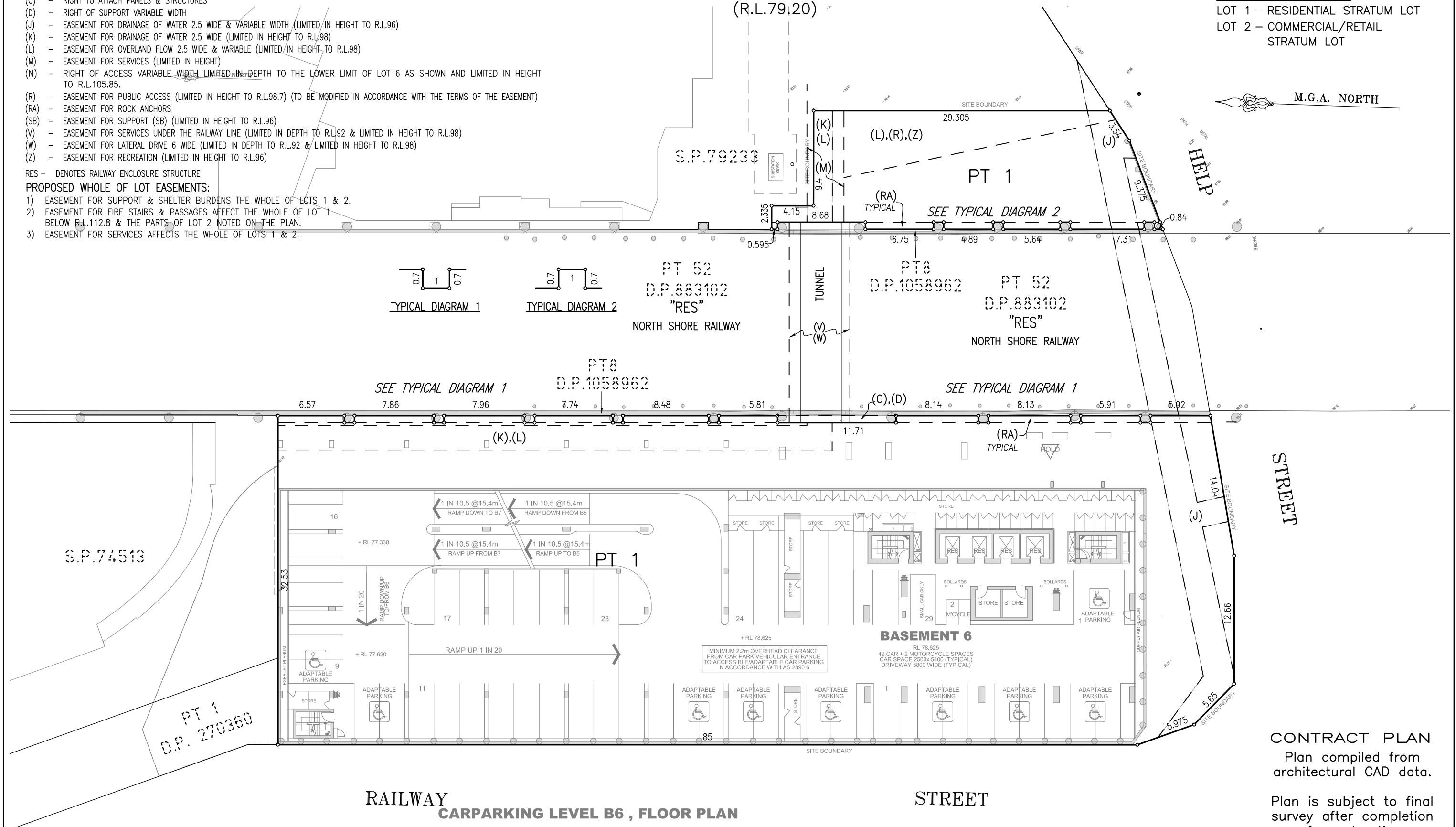
BASEMENT 6 & 7 & BELOW

(R.L.79.20)

SCHEDULE OF LOTS

- LOT 1 - RESIDENTIAL STRATUM LOT
- LOT 2 - COMMERCIAL/RETAIL STRATUM LOT

M.G.A. NORTH



RAILWAY CARPARKING LEVEL B6 , FLOOR PLAN

STREET

CONTRACT PLAN
Plan compiled from architectural CAD data.

Plan is subject to final survey after completion of construction.

NOTE: THE ARCHITECTURAL BACKGROUND SHOWN ON THE PLAN IS FOR CONCEPTUAL INFORMATION PURPOSES ONLY

PRINTED 15 NOV 2010
(ISSUE 7)

THIS PLAN IS BASED ON PLANS BY
MIRVAC DESIGN
DWG No.: PPR1004[03]-B6

Surveyor: TASY MORAITIS
Date of Survey: / /
Surveyor's Ref: 080406 D-SUB

PLAN OF PROPOSED SUBDIVISION OF LOT 6
IN D.P.1058962

LGA: WILLOUGHBY
Locality: CHATSWOOD
Subdivision No:
Lengths are in metres. Reduction Ratio 1:250

REGISTERED

DRAFT PLAN

EASEMENTS VIDE D.P.1058962:

- (C) - RIGHT TO ATTACH PANELS & STRUCTURES
- (D) - RIGHT OF SUPPORT VARIABLE WIDTH
- (J) - EASEMENT FOR DRAINAGE OF WATER 2.5 WIDE & VARIABLE WIDTH (LIMITED IN HEIGHT TO R.L.96)
- (K) - EASEMENT FOR DRAINAGE OF WATER 2.5 WIDE (LIMITED IN HEIGHT TO R.L.98)
- (L) - EASEMENT FOR OVERLAND FLOW 2.5 WIDE & VARIABLE (LIMITED IN HEIGHT TO R.L.98)
- (M) - EASEMENT FOR SERVICES (LIMITED IN HEIGHT)
- (N) - RIGHT OF ACCESS VARIABLE WIDTH LIMITED IN DEPTH TO THE LOWER LIMIT OF LOT 6 AS SHOWN AND LIMITED IN HEIGHT TO R.L.105.85.
- (R) - EASEMENT FOR PUBLIC ACCESS (LIMITED IN HEIGHT TO R.L.98.7) (TO BE MODIFIED IN ACCORDANCE WITH THE TERMS OF THE EASEMENT)
- (RA) - EASEMENT FOR ROCK ANCHORS
- (SB) - EASEMENT FOR SUPPORT (SB) (LIMITED IN HEIGHT TO R.L.96)
- (V) - EASEMENT FOR SERVICES UNDER THE RAILWAY LINE (LIMITED IN DEPTH TO R.L.92 & LIMITED IN HEIGHT TO R.L.98)
- (W) - EASEMENT FOR LATERAL DRIVE 6 WIDE (LIMITED IN DEPTH TO R.L.92 & LIMITED IN HEIGHT TO R.L.98)
- (Z) - EASEMENT FOR RECREATION (LIMITED IN HEIGHT TO R.L.96)

RES - DENOTES RAILWAY ENCLOSURE STRUCTURE

PROPOSED WHOLE OF LOT EASEMENTS:

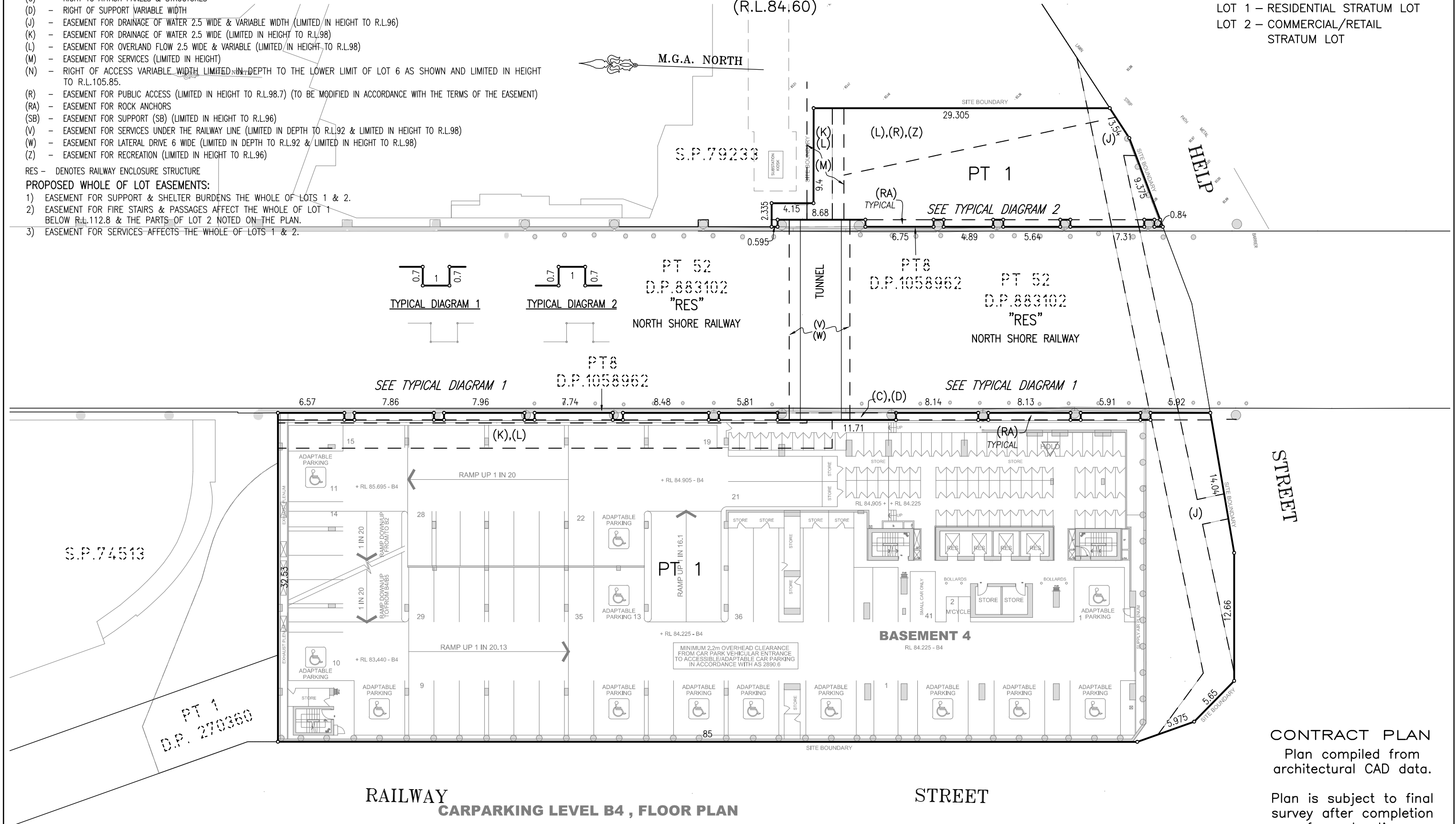
- 1) EASEMENT FOR SUPPORT & SHELTER BURDENS THE WHOLE OF LOTS 1 & 2.
- 2) EASEMENT FOR FIRE STAIRS & PASSAGES AFFECT THE WHOLE OF LOT 1 BELOW R.L.112.8 & THE PARTS OF LOT 2 NOTED ON THE PLAN.
- 3) EASEMENT FOR SERVICES AFFECTS THE WHOLE OF LOTS 1 & 2.

BASEMENT 4

(R.L.84.60)

SCHEDULE OF LOTS

- LOT 1 - RESIDENTIAL STRATUM LOT
- LOT 2 - COMMERCIAL/RETAIL STRATUM LOT



CONTRACT PLAN
Plan compiled from architectural CAD data.

Plan is subject to final survey after completion of construction.

NOTE: THE ARCHITECTURAL BACKGROUND SHOWN ON THE PLAN IS FOR CONCEPTUAL INFORMATION PURPOSES ONLY

PRINTED 15 NOV 2010
(ISSUE 7)

THIS PLAN IS BASED ON PLANS BY
MIRVAC DESIGN
DWG No.: PPR1005[03]-B4

Surveyor: TASY MORAITIS
Date of Survey: / /
Surveyor's Ref: 080406 D-SUB

PLAN OF PROPOSED SUBDIVISION OF LOT 6
IN D.P.1058962

LGA: WILLOUGHBY
Locality: CHATSWOOD
Subdivision No:
Lengths are in metres. Reduction Ratio 1:250

REGISTERED

DRAFT PLAN

EASEMENTS VIDE D.P.1058962:

- (C) - RIGHT TO ATTACH PANELS & STRUCTURES
- (D) - RIGHT OF SUPPORT VARIABLE WIDTH
- (J) - EASEMENT FOR DRAINAGE OF WATER 2.5 WIDE & VARIABLE WIDTH (LIMITED IN HEIGHT TO R.L.96)
- (K) - EASEMENT FOR DRAINAGE OF WATER 2.5 WIDE (LIMITED IN HEIGHT TO R.L.98)
- (L) - EASEMENT FOR OVERLAND FLOW 2.5 WIDE & VARIABLE (LIMITED IN HEIGHT TO R.L.98)
- (M) - EASEMENT FOR SERVICES (LIMITED IN HEIGHT)
- (N) - RIGHT OF ACCESS VARIABLE WIDTH LIMITED IN DEPTH TO THE LOWER LIMIT OF LOT 6 AS SHOWN AND LIMITED IN HEIGHT TO R.L.105.85.
- (R) - EASEMENT FOR PUBLIC ACCESS (LIMITED IN HEIGHT TO R.L.98.7) (TO BE MODIFIED IN ACCORDANCE WITH THE TERMS OF THE EASEMENT)
- (RA) - EASEMENT FOR ROCK ANCHORS
- (SB) - EASEMENT FOR SUPPORT (SB) (LIMITED IN HEIGHT TO R.L.96)
- (V) - EASEMENT FOR SERVICES UNDER THE RAILWAY LINE (LIMITED IN DEPTH TO R.L.92 & LIMITED IN HEIGHT TO R.L.98)
- (W) - EASEMENT FOR LATERAL DRIVE 6 WIDE (LIMITED IN DEPTH TO R.L.92 & LIMITED IN HEIGHT TO R.L.98)
- (Z) - EASEMENT FOR RECREATION (LIMITED IN HEIGHT TO R.L.96)

RES - DENOTES RAILWAY ENCLOSURE STRUCTURE

PROPOSED WHOLE OF LOT EASEMENTS:

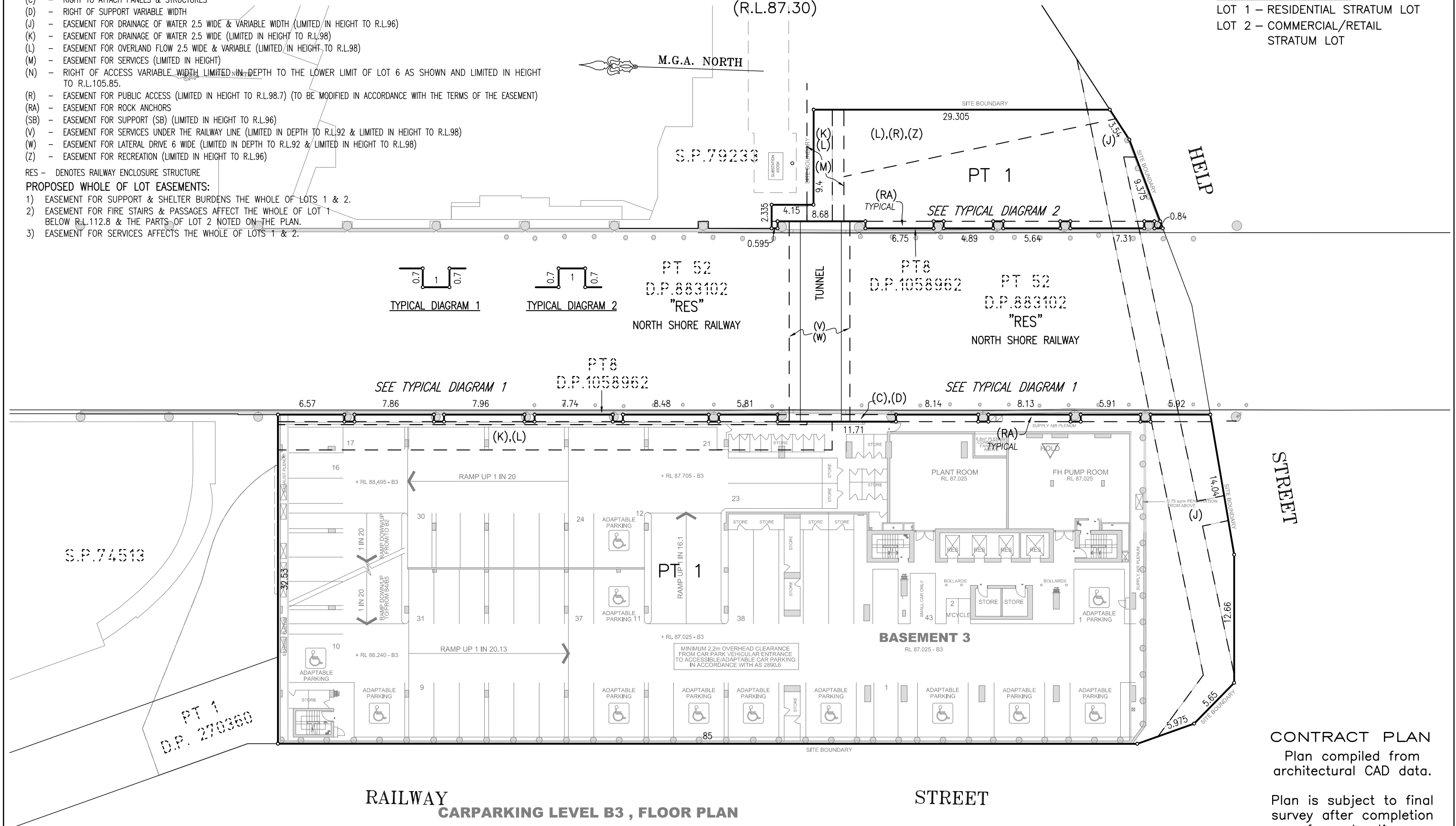
- 1) EASEMENT FOR SUPPORT & SHELTER BURDENS THE WHOLE OF LOTS 1 & 2.
- 2) EASEMENT FOR FIRE STAIRS & PASSAGES AFFECT THE WHOLE OF LOT 1 BELOW R.L.112.8 & THE PARTS OF LOT 2 NOTED ON THE PLAN.
- 3) EASEMENT FOR SERVICES AFFECTS THE WHOLE OF LOTS 1 & 2.

BASEMENT 3

(R.L.87.30)

SCHEDULE OF LOTS

- LOT 1 - RESIDENTIAL STRATUM LOT
- LOT 2 - COMMERCIAL/RETAIL STRATUM LOT



CONTRACT PLAN
Plan compiled from architectural CAD data.

Plan is subject to final survey after completion of construction.

NOTE: THE ARCHITECTURAL BACKGROUND SHOWN ON THE PLAN IS FOR CONCEPTUAL INFORMATION PURPOSES ONLY

PRINTED 15 NOV 2010
(ISSUE 7)

THIS PLAN IS BASED ON PLANS BY
MIRVAC DESIGN
DWG No.: PPR1006[03]-B3

Surveyor: TASY MORAITIS
Date of Survey: / /
Surveyor's Ref: 080406 D-SUB

PLAN OF PROPOSED SUBDIVISION OF LOT 6
IN D.P.1058962

LGA: WILLOUGHBY
Locality: CHATSWOOD
Subdivision No:
Lengths are in metres. Reduction Ratio 1:250

REGISTERED

DRAFT PLAN

EASEMENTS VIDE D.P.1058962:

- (C) - RIGHT TO ATTACH PANELS & STRUCTURES
- (D) - RIGHT OF SUPPORT VARIABLE WIDTH
- (J) - EASEMENT FOR DRAINAGE OF WATER 2.5 WIDE & VARIABLE WIDTH (LIMITED IN HEIGHT TO R.L.96)
- (K) - EASEMENT FOR DRAINAGE OF WATER 2.5 WIDE (LIMITED IN HEIGHT TO R.L.98)
- (L) - EASEMENT FOR OVERLAND FLOW 2.5 WIDE & VARIABLE (LIMITED IN HEIGHT TO R.L.98)
- (M) - EASEMENT FOR SERVICES (LIMITED IN HEIGHT)
- (N) - RIGHT OF ACCESS VARIABLE WIDTH LIMITED IN DEPTH TO THE LOWER LIMIT OF LOT 6 AS SHOWN AND LIMITED IN HEIGHT TO R.L.105.85.
- (R) - EASEMENT FOR PUBLIC ACCESS (LIMITED IN HEIGHT TO R.L.98.7) (TO BE MODIFIED IN ACCORDANCE WITH THE TERMS OF THE EASEMENT)
- (RA) - EASEMENT FOR ROCK ANCHORS
- (SB) - EASEMENT FOR SUPPORT (SB) (LIMITED IN HEIGHT TO R.L.96)
- (V) - EASEMENT FOR SERVICES UNDER THE RAILWAY LINE (LIMITED IN DEPTH TO R.L.92 & LIMITED IN HEIGHT TO R.L.98)
- (W) - EASEMENT FOR LATERAL DRIVE 6 WIDE (LIMITED IN DEPTH TO R.L.92 & LIMITED IN HEIGHT TO R.L.98)
- (Z) - EASEMENT FOR RECREATION (LIMITED IN HEIGHT TO R.L.96)

RES - DENOTES RAILWAY ENCLOSURE STRUCTURE

PROPOSED WHOLE OF LOT EASEMENTS:

- 1) EASEMENT FOR SUPPORT & SHELTER BURDENS THE WHOLE OF LOTS 1 & 2.
- 2) EASEMENT FOR FIRE STAIRS & PASSAGES AFFECT THE WHOLE OF LOT 1 BELOW R.L.112.8 & THE PARTS OF LOT 2 NOTED ON THE PLAN.
- 3) EASEMENT FOR SERVICES AFFECTS THE WHOLE OF LOTS 1 & 2.

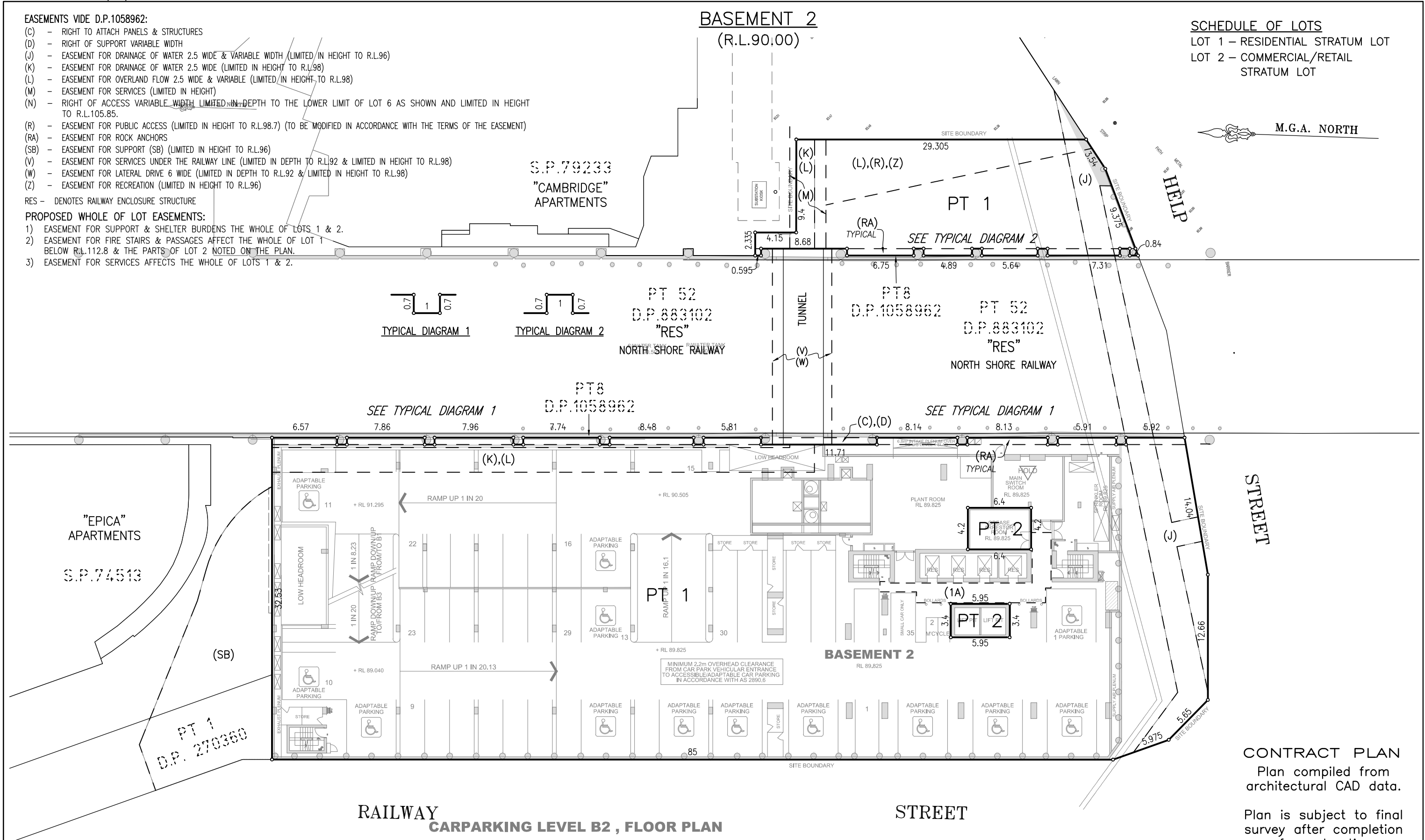
BASEMENT 2

(R.L.90.00)

SCHEDULE OF LOTS

- LOT 1 - RESIDENTIAL STRATUM LOT
- LOT 2 - COMMERCIAL/RETAIL STRATUM LOT

M.G.A. NORTH



STREET

RAILWAY CARPARKING LEVEL B2 , FLOOR PLAN

STREET

CONTRACT PLAN
Plan compiled from architectural CAD data.

Plan is subject to final survey after completion of construction.

NOTE: THE ARCHITECTURAL BACKGROUND SHOWN ON THE PLAN IS FOR CONCEPTUAL INFORMATION PURPOSES ONLY

PRINTED 15 NOV 2010
(ISSUE 7)

THIS PLAN IS BASED ON PLANS BY
MIRVAC DESIGN
DWG No.: PPR1006[03]-B2

Surveyor: TASY MORAITIS
Date of Survey: / /
Surveyor's Ref: 080406 D-SUB

PLAN OF PROPOSED SUBDIVISION OF LOT 6
IN D.P.1058962

LGA: WILLOUGHBY
Locality: CHATSWOOD
Subdivision No:
Lengths are in metres. Reduction Ratio 1:250

REGISTERED

DRAFT PLAN

EASEMENTS VIDE D.P.1058962:

- (C) - RIGHT TO ATTACH PANELS & STRUCTURES
- (D) - RIGHT OF SUPPORT VARIABLE WIDTH
- (J) - EASEMENT FOR DRAINAGE OF WATER 2.5 WIDE & VARIABLE WIDTH (LIMITED IN HEIGHT TO R.L.96)
- (K) - EASEMENT FOR DRAINAGE OF WATER 2.5 WIDE (LIMITED IN HEIGHT TO R.L.98)
- (L) - EASEMENT FOR OVERLAND FLOW 2.5 WIDE & VARIABLE (LIMITED IN HEIGHT TO R.L.98)
- (M) - EASEMENT FOR SERVICES (LIMITED IN HEIGHT)
- (N) - RIGHT OF ACCESS VARIABLE WIDTH LIMITED IN DEPTH TO THE LOWER LIMIT OF LOT 6 AS SHOWN AND LIMITED IN HEIGHT TO R.L.105.85.
- (R) - EASEMENT FOR PUBLIC ACCESS (LIMITED IN HEIGHT TO R.L.98.7) (TO BE MODIFIED IN ACCORDANCE WITH THE TERMS OF THE EASEMENT)
- (RA) - EASEMENT FOR ROCK ANCHORS
- (SB) - EASEMENT FOR SUPPORT (SB) (LIMITED IN HEIGHT TO R.L.96)
- (V) - EASEMENT FOR SERVICES UNDER THE RAILWAY LINE (LIMITED IN DEPTH TO R.L.92 & LIMITED IN HEIGHT TO R.L.98)
- (W) - EASEMENT FOR LATERAL DRIVE 6 WIDE (LIMITED IN DEPTH TO R.L.92 & LIMITED IN HEIGHT TO R.L.98)
- (Z) - EASEMENT FOR RECREATION (LIMITED IN HEIGHT TO R.L.96)

RES - DENOTES RAILWAY ENCLOSURE STRUCTURE

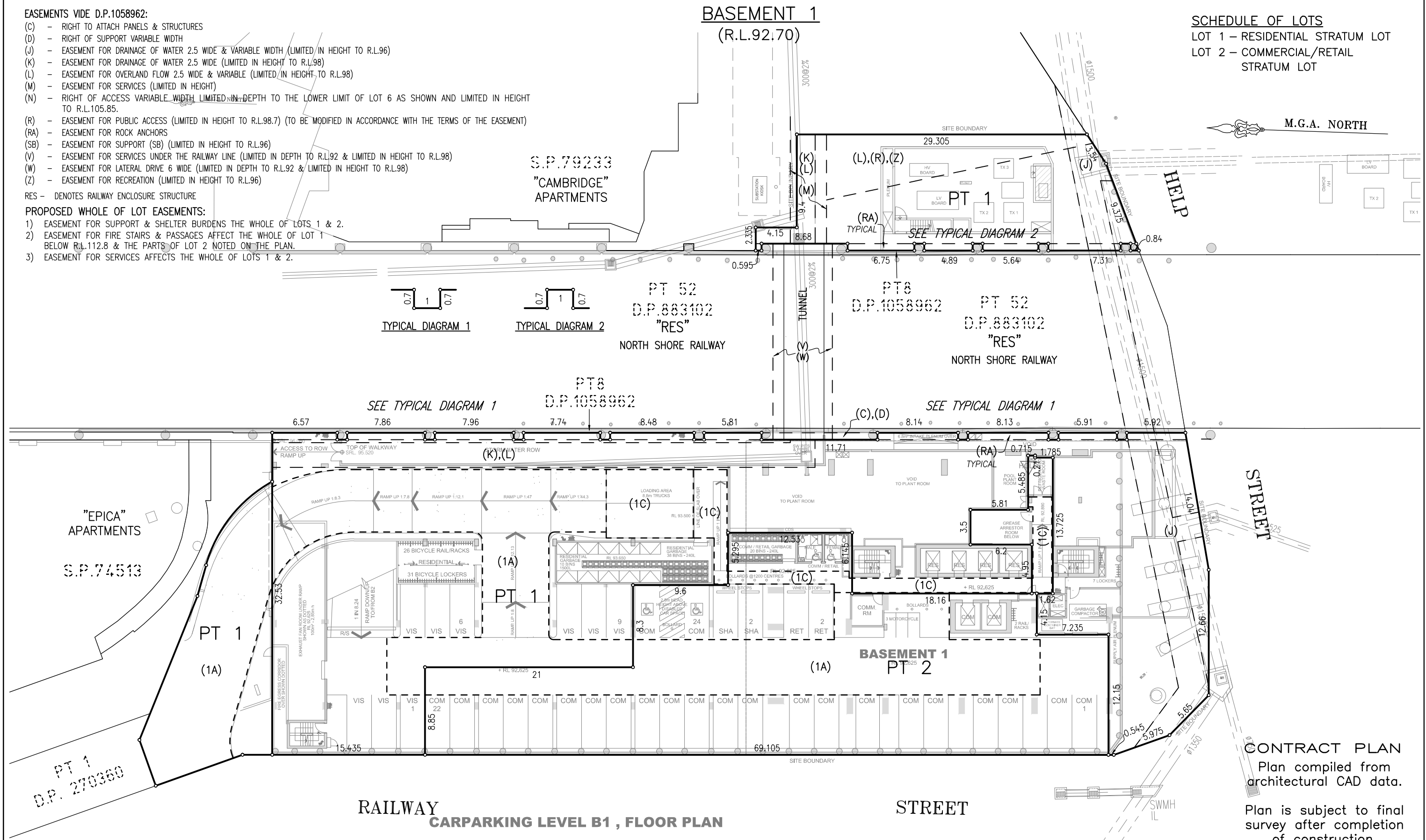
PROPOSED WHOLE OF LOT EASEMENTS:

- 1) EASEMENT FOR SUPPORT & SHELTER BURDENS THE WHOLE OF LOTS 1 & 2.
- 2) EASEMENT FOR FIRE STAIRS & PASSAGES AFFECT THE WHOLE OF LOT 1 BELOW R.L.112.8 & THE PARTS OF LOT 2 NOTED ON THE PLAN.
- 3) EASEMENT FOR SERVICES AFFECTS THE WHOLE OF LOTS 1 & 2.

BASEMENT 1 (R.L.92.70)

SCHEDULE OF LOTS
 LOT 1 - RESIDENTIAL STRATUM LOT
 LOT 2 - COMMERCIAL/RETAIL STRATUM LOT

M.G.A. NORTH



STREET

RAILWAY CARPARKING LEVEL B1, FLOOR PLAN

CONTRACT PLAN
 Plan compiled from architectural CAD data.
 Plan is subject to final survey after completion of construction.

- (1A) - EASEMENT FOR ACCESS VARIABLE WIDTH.
- (1C) - EASEMENT TO USE LOADING DOCK & SERVICE CORRIDOR VARIABLE WIDTH.

PRINTED 15 NOV 2010 (ISSUE 7)

NOTE: THE ARCHITECTURAL BACKGROUND SHOWN ON THE PLAN IS FOR CONCEPTUAL INFORMATION PURPOSES ONLY

THIS PLAN IS BASED ON PLANS BY
 MIRVAC DESIGN
 DWG No.: PPR1007[03]-B1

Surveyor: TASY MORAITIS
 Date of Survey: / /
 Surveyor's Ref: 080406 D-SUB

PLAN OF PROPOSED SUBDIVISION OF LOT 6
 IN D.P.1058962

LGA: WILLOUGHBY
 Locality: CHATSWOOD
 Subdivision No:
 Lengths are in metres. Reduction Ratio 1:250

REGISTERED

DRAFT PLAN

EASEMENTS VIDE D.P.1058962:

- (C) - RIGHT TO ATTACH PANELS & STRUCTURES
 - (D) - RIGHT OF SUPPORT VARIABLE WIDTH
 - (J) - EASEMENT FOR DRAINAGE OF WATER 2.5 WIDE & VARIABLE WIDTH (LIMITED IN HEIGHT TO R.L.96)
 - (K) - EASEMENT FOR DRAINAGE OF WATER 2.5 WIDE (LIMITED IN HEIGHT TO R.L.98)
 - (L) - EASEMENT FOR OVERLAND FLOW 2.5 WIDE & VARIABLE (LIMITED IN HEIGHT TO R.L.98)
 - (M) - EASEMENT FOR SERVICES (LIMITED IN HEIGHT)
 - (N) - RIGHT OF ACCESS VARIABLE WIDTH LIMITED IN DEPTH TO THE LOWER LIMIT OF LOT 6 AS SHOWN AND LIMITED IN HEIGHT TO R.L.105.85.
 - (R) - EASEMENT FOR PUBLIC ACCESS (LIMITED IN HEIGHT TO R.L.98.7) (TO BE MODIFIED IN ACCORDANCE WITH THE TERMS OF THE EASEMENT)
 - (RA) - EASEMENT FOR ROCK ANCHORS
 - (SB) - EASEMENT FOR SUPPORT (SB) (LIMITED IN HEIGHT TO R.L.96)
 - (V) - EASEMENT FOR SERVICES UNDER THE RAILWAY LINE (LIMITED IN DEPTH TO R.L.92 & LIMITED IN HEIGHT TO R.L.98)
 - (W) - EASEMENT FOR LATERAL DRIVE 6 WIDE (LIMITED IN DEPTH TO R.L.92 & LIMITED IN HEIGHT TO R.L.98)
 - (Z) - EASEMENT FOR RECREATION (LIMITED IN HEIGHT TO R.L.96)
- RES - DENOTES RAILWAY ENCLOSURE STRUCTURE

PROPOSED WHOLE OF LOT EASEMENTS:

- 1) EASEMENT FOR SUPPORT & SHELTER BURDENS THE WHOLE OF LOTS 1 & 2.
- 2) EASEMENT FOR FIRE STAIRS & PASSAGES AFFECT THE WHOLE OF LOT 1 BELOW R.L.112.8 & THE PARTS OF LOT 2 NOTED ON THE PLAN.
- 3) EASEMENT FOR SERVICES AFFECTS THE WHOLE OF LOTS 1 & 2.

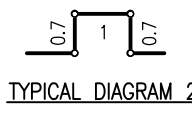
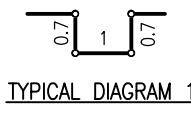
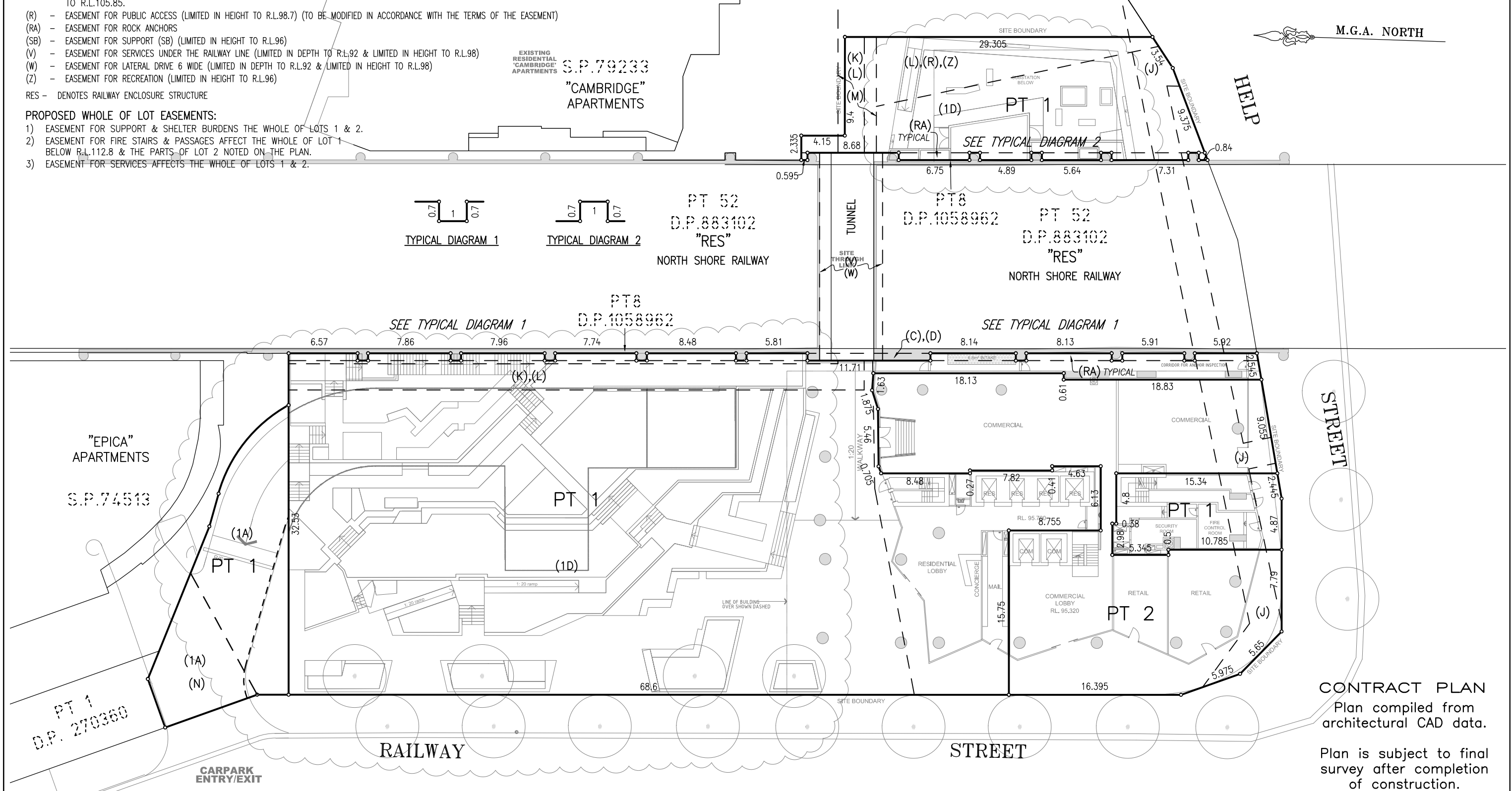
GROUND LEVEL

(LEVEL 1)
(R.L.95.50)

SCHEDULE OF LOTS

LOT 1 - RESIDENTIAL STRATUM LOT
LOT 2 - COMMERCIAL/RETAIL STRATUM LOT

M.G.A. NORTH



STREET

CONTRACT PLAN
Plan compiled from architectural CAD data.

Plan is subject to final survey after completion of construction.

NOTE: THE ARCHITECTURAL BACKGROUND SHOWN ON THE PLAN IS FOR CONCEPTUAL INFORMATION PURPOSES ONLY

- (1A) - EASEMENT FOR ACCESS VARIABLE WIDTH.
- (1D) - EASEMENT FOR RECREATION PURPOSES VARIABLE WIDTH.

PRINTED 15 NOV 2010
(ISSUE 7)

THIS PLAN IS BASED ON PLANS BY
MIRVAC DESIGN
DWG No.: X-FP_01

Surveyor: TASY MORAITIS
Date of Survey: / /
Surveyor's Ref: 080406 D-SUB

PLAN OF PROPOSED SUBDIVISION OF LOT 6
IN D.P.1058962

LGA: WILLOUGHBY
Locality: CHATSWOOD
Subdivision No:
Lengths are in metres. Reduction Ratio 1:250

REGISTERED

DRAFT PLAN

EASEMENTS VIDE D.P.1058962:

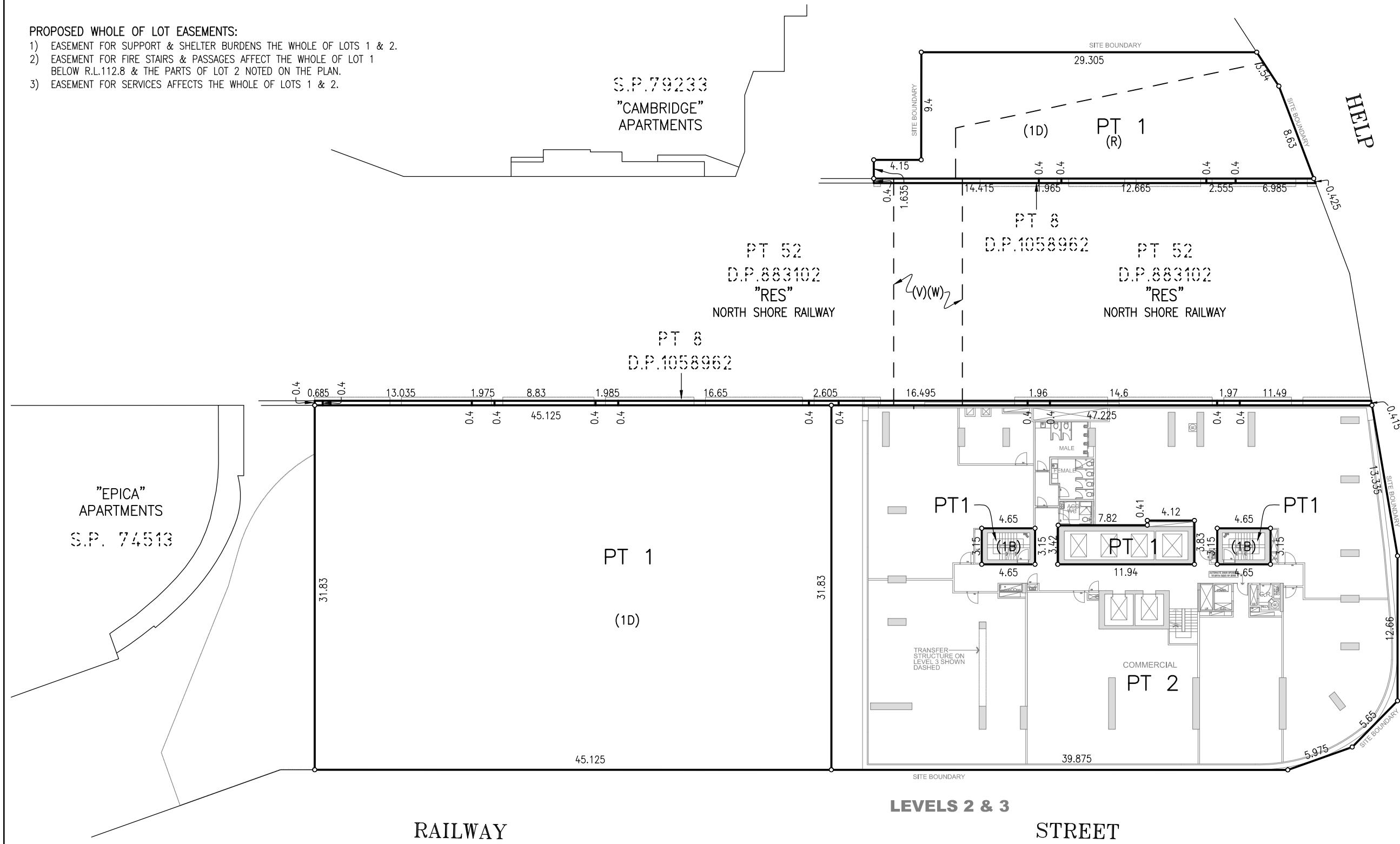
- (R) - EASEMENT FOR PUBLIC ACCESS (TO BE MODIFIED IN ACCORDANCE WITH THE TERMS OF THE EASEMENT).
- (V) - EASEMENT FOR SERVICES UNDER THE RAILWAY LINE LIMITED IN DEPTH TO R.L.96 AND LIMITED IN HEIGHT TO R.L.98.
- (W) - EASEMENT FOR LATERAL DRIVE 6 WIDE LIMITED IN DEPTH TO R.L.96 AND LIMITED IN HEIGHT TO R.L.98.

PROPOSED WHOLE OF LOT EASEMENTS:

- EASEMENT FOR SUPPORT & SHELTER BURDENS THE WHOLE OF LOTS 1 & 2.
- EASEMENT FOR FIRE STAIRS & PASSAGES AFFECT THE WHOLE OF LOT 1 BELOW R.L.112.8 & THE PARTS OF LOT 2 NOTED ON THE PLAN.
- EASEMENT FOR SERVICES AFFECTS THE WHOLE OF LOTS 1 & 2.

LEVELS 2 & 3
(R.L.98.70-R.L.103.05)

SCHEDULE OF LOTS
 LOT 1 - RESIDENTIAL STRATUM LOT
 LOT 2 - COMMERCIAL/RETAIL STRATUM LOT



STREET

CONTRACT PLAN
 Plan compiled from architectural CAD data.

Plan is subject to final survey after completion of construction.

NOTE: THE ARCHITECTURAL BACKGROUND SHOWN ON THE PLAN IS FOR CONCEPTUAL INFORMATION PURPOSES ONLY

- (1B) - EASEMENT FOR FIRE STAIRS & PASSAGES.
- (1D) - EASEMENT FOR RECREATION PURPOSES VARIABLE WIDTH.

PRINTED 15 NOV 2010
(ISSUE 7)

THIS PLAN IS BASED ON PLANS BY
 MIRVAC DESIGN
 DWG No.: 193231_PPR1009[03]_L2-3

Surveyor: TASY MORAITIS
 Date of Survey: / /
 Surveyor's Ref: 080406 D-SUB

PLAN OF PROPOSED SUBDIVISION OF LOT 6
 IN D.P.1058962

LGA: WILLOUGHBY
 Locality: CHATSWOOD
 Subdivision No:
 Lengths are in metres. Reduction Ratio 1:250

REGISTERED

DRAFT PLAN

EASEMENTS:

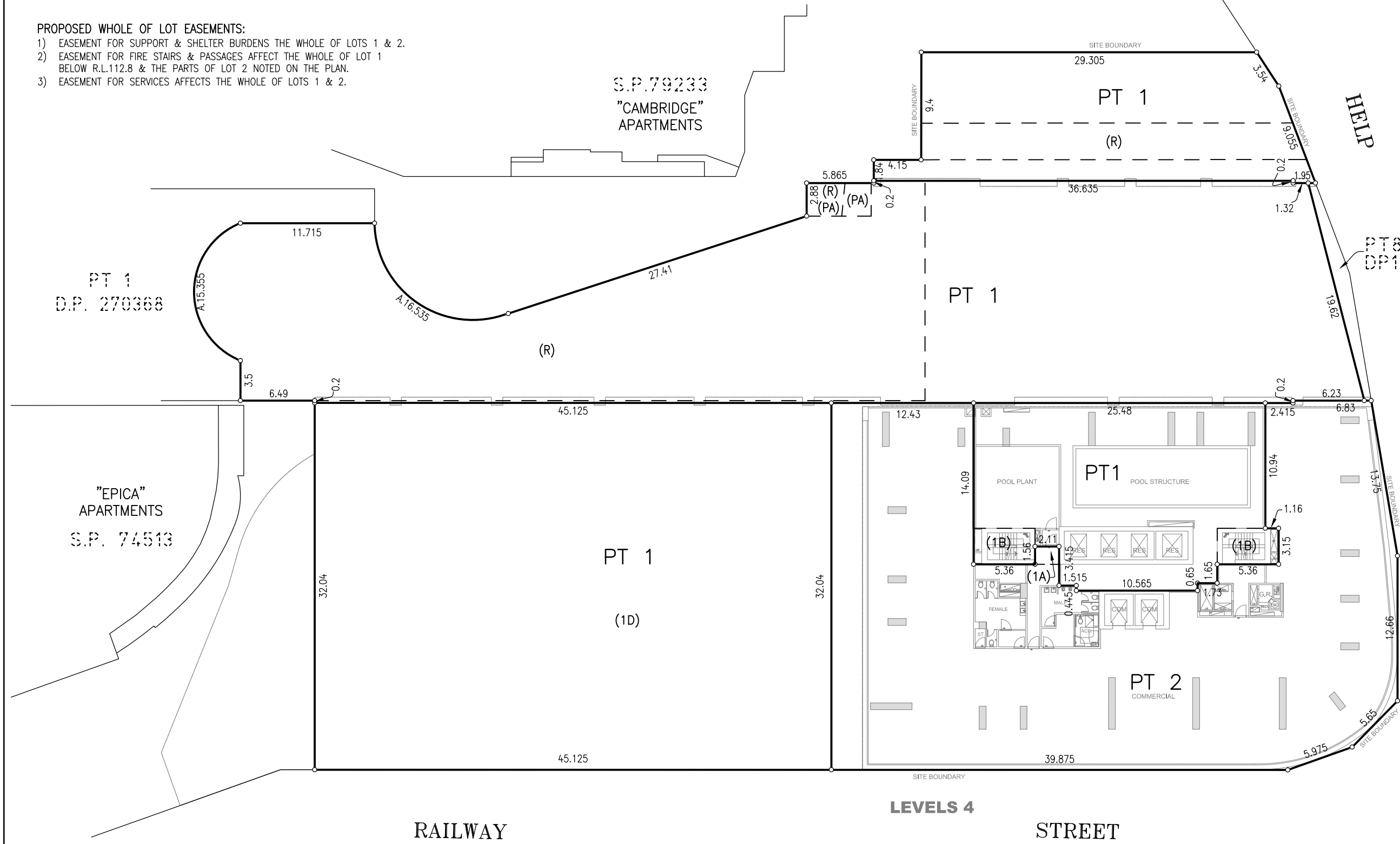
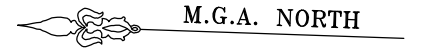
- (R) - EASEMENT FOR PUBLIC ACCESS (D.P.1058962) (TO BE MODIFIED IN ACCORDANCE WITH THE TERMS OF THE EASEMENT).
- (PA) - EASEMENT FOR PUBLIC ACCESS (D.P.270368) IS LIMITED IN DEPTH TO R.L.107.4

PROPOSED WHOLE OF LOT EASEMENTS:

- EASEMENT FOR SUPPORT & SHELTER BURDENS THE WHOLE OF LOTS 1 & 2.
- EASEMENT FOR FIRE STAIRS & PASSAGES AFFECT THE WHOLE OF LOT 1 BELOW R.L.112.8 & THE PARTS OF LOT 2 NOTED ON THE PLAN.
- EASEMENT FOR SERVICES AFFECTS THE WHOLE OF LOTS 1 & 2.

LEVEL 4
(R.L.106.40)

SCHEDULE OF LOTS
 LOT 1 - RESIDENTIAL STRATUM LOT
 LOT 2 - COMMERCIAL/RETAIL STRATUM LOT



STREET

CONTRACT PLAN
 Plan compiled from architectural CAD data.

Plan is subject to final survey after completion of construction.

NOTE: THE ARCHITECTURAL BACKGROUND SHOWN ON THE PLAN IS FOR CONCEPTUAL INFORMATION PURPOSES ONLY

- (1A) - EASEMENT FOR ACCESS VARIABLE WIDTH.
- (1B) - EASEMENT FOR FIRE STAIRS & PASSAGES.
- (1D) - EASEMENT FOR RECREATION PURPOSES VARIABLE WIDTH.

PRINTED 15 NOV 2010
(ISSUE 7)

THIS PLAN IS BASED ON PLANS BY
 MIRVAC DESIGN
 DWG No.: 193231_PPR1009[03]_L4

Surveyor: TASY MORAITIS
 Date of Survey: / /
 Surveyor's Ref: 080406 D-SUB

PLAN OF PROPOSED SUBDIVISION OF LOT 6
 IN D.P.1058962

LGA: WILLOUGHBY
 Locality: CHATSWOOD
 Subdivision No:
 Lengths are in metres. Reduction Ratio 1:250

REGISTERED

DRAFT PLAN

EASEMENTS:

(R) - EASEMENT FOR PUBLIC ACCESS (D.P.1058962) (TO BE MODIFIED IN ACCORDANCE WITH THE TERMS OF THE EASEMENT).

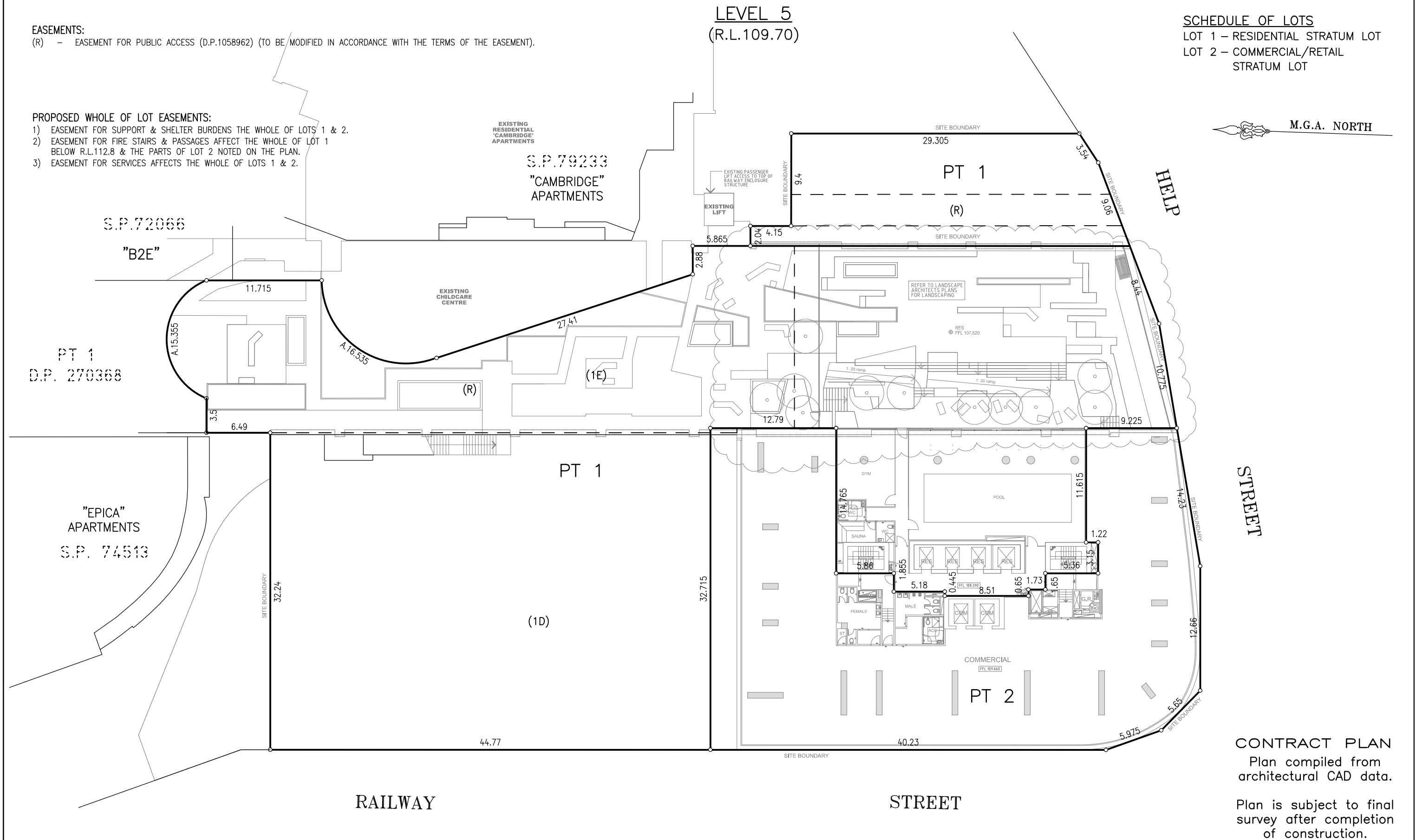
PROPOSED WHOLE OF LOT EASEMENTS:

- 1) EASEMENT FOR SUPPORT & SHELTER BURDENS THE WHOLE OF LOTS 1 & 2.
- 2) EASEMENT FOR FIRE STAIRS & PASSAGES AFFECT THE WHOLE OF LOT 1 BELOW R.L.112.8 & THE PARTS OF LOT 2 NOTED ON THE PLAN.
- 3) EASEMENT FOR SERVICES AFFECTS THE WHOLE OF LOTS 1 & 2.

SCHEDULE OF LOTS

- LOT 1 - RESIDENTIAL STRATUM LOT
- LOT 2 - COMMERCIAL/RETAIL STRATUM LOT

M.G.A. NORTH



CONTRACT PLAN
Plan compiled from architectural CAD data.

Plan is subject to final survey after completion of construction.

NOTE: THE ARCHITECTURAL BACKGROUND SHOWN ON THE PLAN IS FOR CONCEPTUAL INFORMATION PURPOSES ONLY

PRINTED 15 NOV 2010
(ISSUE 7)

(1D) - EASEMENT FOR RECREATION PURPOSES VARIABLE WIDTH
(1E) - EASEMENT FOR ACCESS VARIABLE WIDTH

THIS PLAN IS BASED ON PLANS BY
MIRVAC DESIGN
DWG No.: X-FP_05

Surveyor: TASY MORAITIS
Date of Survey: / /
Surveyor's Ref: 080406 D-SUB

PLAN OF PROPOSED SUBDIVISION OF LOT 6
IN D.P.1058962

LGA: WILLOUGHBY
Locality: CHATSWOOD
Subdivision No:
Lengths are in metres. Reduction Ratio 1:250

REGISTERED

DRAFT PLAN

LEVEL 6 & ABOVE
(R.L.112.80 & ABOVE)

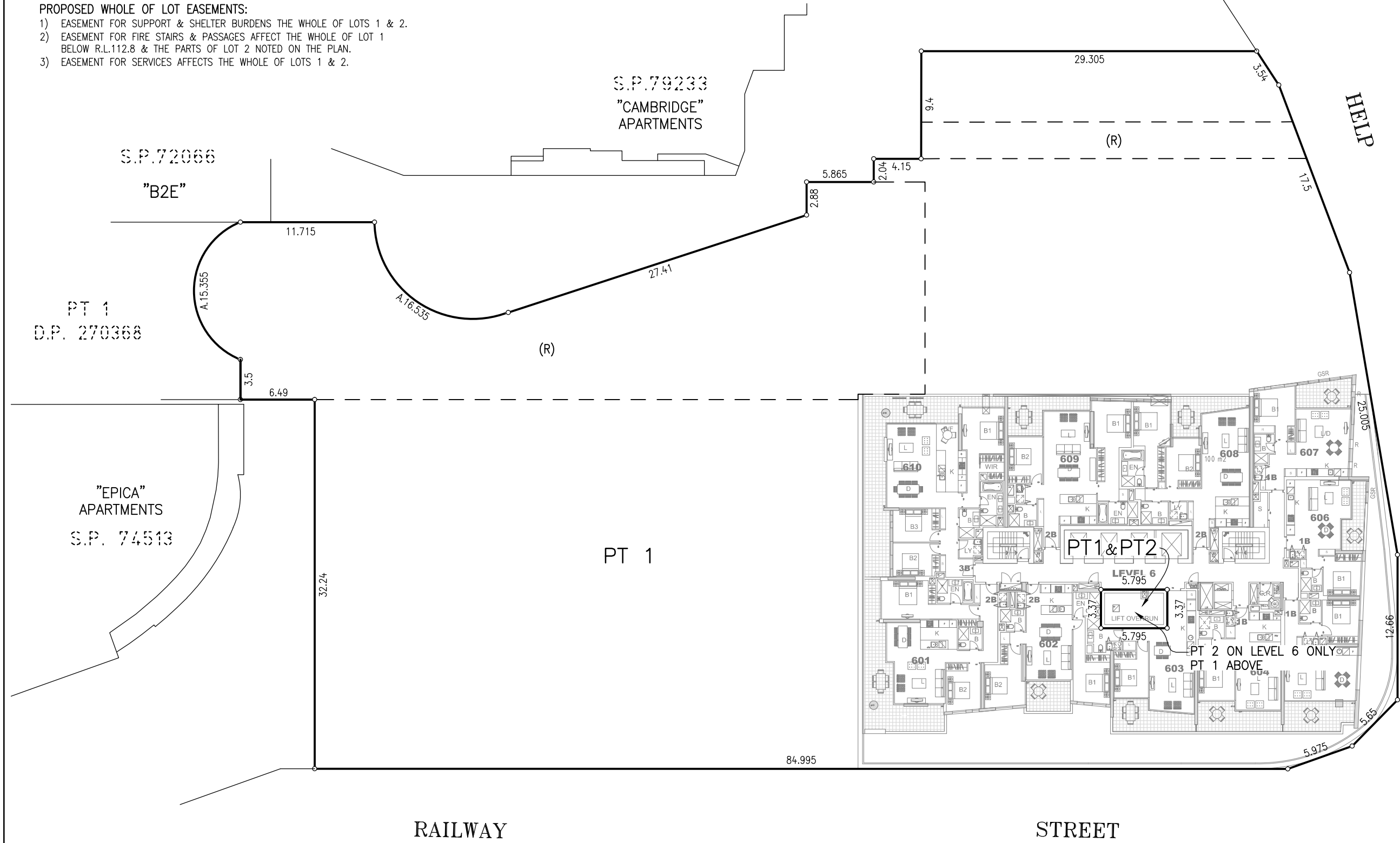
SCHEDULE OF LOTS
LOT 1 – RESIDENTIAL STRATUM LOT
LOT 2 – COMMERCIAL/RETAIL
STRATUM LOT

EASEMENTS:

(R) – EASEMENT FOR PUBLIC ACCESS (D.P.1058962) (TO BE MODIFIED IN ACCORDANCE WITH THE TERMS OF THE EASEMENT).

PROPOSED WHOLE OF LOT EASEMENTS:

- 1) EASEMENT FOR SUPPORT & SHELTER BURDENS THE WHOLE OF LOTS 1 & 2.
- 2) EASEMENT FOR FIRE STAIRS & PASSAGES AFFECT THE WHOLE OF LOT 1 BELOW R.L.112.8 & THE PARTS OF LOT 2 NOTED ON THE PLAN.
- 3) EASEMENT FOR SERVICES AFFECTS THE WHOLE OF LOTS 1 & 2.



HELP STREET

CONTRACT PLAN
Plan compiled from architectural CAD data.

Plan is subject to final survey after completion of construction.

NOTE: THE ARCHITECTURAL BACKGROUND SHOWN ON THE PLAN IS FOR CONCEPTUAL INFORMATION PURPOSES ONLY

NOTE – EASEMENT (1D) DOES NOT EXIST ABOVE R.L.112.80

PRINTED 15 NOV 2010
(ISSUE 7)

THIS PLAN IS BASED ON PLANS BY
MIRVAC DESIGN
DWG No.: X-FP_06

Surveyor: TASY MORAITIS
Date of Survey: / /
Surveyor's Ref: 080406 D-SUB

PLAN OF PROPOSED SUBDIVISION OF LOT 6
IN D.P.1058962

LGA: WILLOUGHBY
Locality: CHATSWOOD
Subdivision No:
Lengths are in metres. Reduction Ratio 1:250

REGISTERED

DRAFT PLAN