

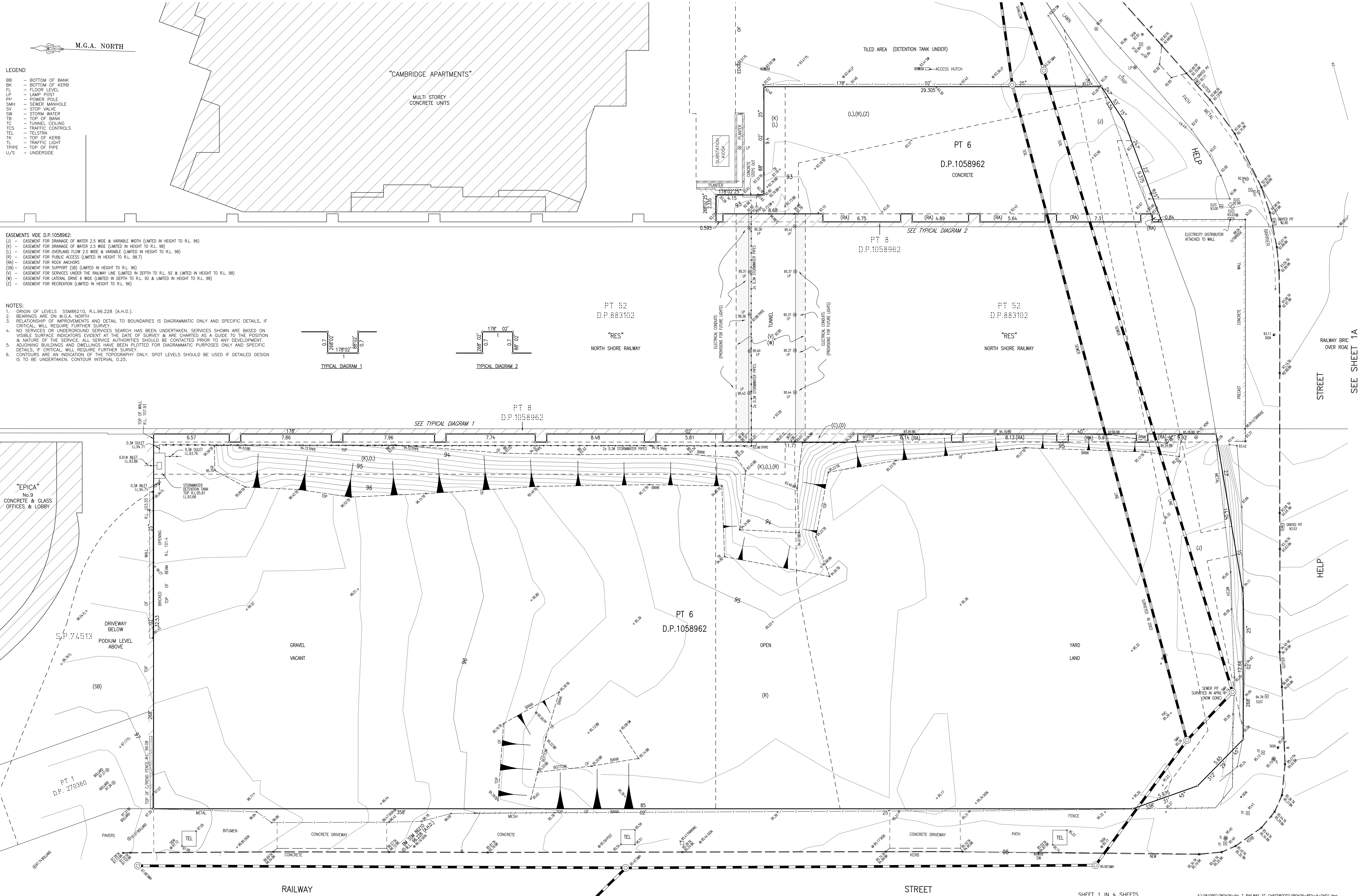
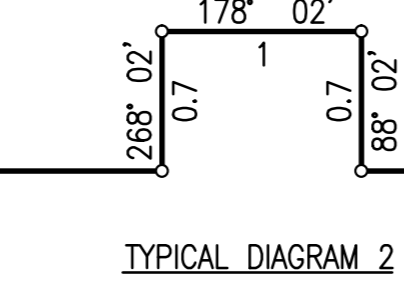
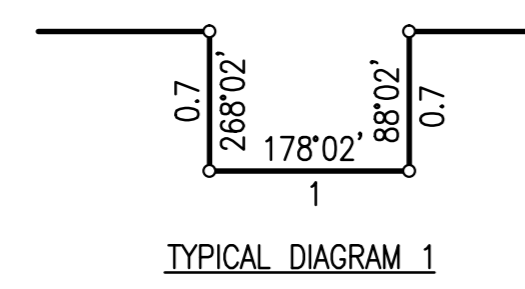
M.G.A. NORTH

LEGEND

- BB - BOTTOM OF BANK
- BK - BOTTOM OF KERB
- FL - FLOOR LEVEL
- LP - LAMP POST
- PP - POWER POLE
- SMH - SEWER MANHOLE
- SV - STOP VALVE
- SW - STORM WATER
- TB - TOP OF BANK
- TC - TUNNEL CEILING
- TCS - TRAFFIC CONTROLS
- TEL - TELSTRA
- TK - TOP OF KERB
- TL - TRAFFIC LIGHT
- TP - TOP OF PIPE
- U/S - UNDERSIDE

- EASEMENTS VIDE D.P.1058962:
- (J) - EASEMENT FOR DRAINAGE OF WATER 2.5 WIDE & VARIABLE WIDTH (LIMITED IN HEIGHT TO R.L. 96)
  - (K) - EASEMENT FOR DRAINAGE OF WATER 2.5 WIDE (LIMITED IN HEIGHT TO R.L. 98)
  - (L) - EASEMENT FOR OVERLAND FLOW 2.5 WIDE & VARIABLE (LIMITED IN HEIGHT TO R.L. 98)
  - (R) - EASEMENT FOR PUBLIC ACCESS (LIMITED IN HEIGHT TO R.L. 98.7)
  - (RA) - EASEMENT FOR ROCK ANCHORS
  - (SB) - EASEMENT FOR SUPPORT (SB) (LIMITED IN HEIGHT TO R.L. 96)
  - (V) - EASEMENT FOR SERVICES UNDER THE RAILWAY LINE (LIMITED IN DEPTH TO R.L. 92 & LIMITED IN HEIGHT TO R.L. 98)
  - (W) - EASEMENT FOR LATERAL DRIVE 6 WIDE (LIMITED IN DEPTH TO R.L. 92 & LIMITED IN HEIGHT TO R.L. 98)
  - (Z) - EASEMENT FOR RECREATION (LIMITED IN HEIGHT TO R.L. 96)

- NOTES:
1. ORIGIN OF LEVELS SSM86210, R.L.96.228 (A.H.D.).
  2. BEARINGS ARE ON M.G.A. NORTH.
  3. RELATIONSHIP OF IMPROVEMENTS AND DETAIL TO BOUNDARIES IS DIAGRAMMATIC ONLY AND SPECIFIC DETAILS, IF CRITICAL, WILL REQUIRE FURTHER SURVEY.
  4. NO SERVICES OR UNDERGROUND SERVICES SEARCH HAS BEEN UNDERTAKEN. SERVICES SHOWN ARE BASED ON VISIBLE SURFACE INDICATORS EVIDENT AT THE DATE OF SURVEY & ARE CHARTED AS A GUIDE TO THE POSITION & NATURE OF THE SERVICE. ALL SERVICE AUTHORITIES SHOULD BE CONTACTED PRIOR TO ANY DEVELOPMENT.
  5. ADJOINING BUILDINGS AND DWELLINGS HAVE BEEN PLOTTED FOR DIAGRAMMATIC PURPOSES ONLY AND SPECIFIC DETAILS, IF CRITICAL, WILL REQUIRE FURTHER SURVEY.
  6. CONTOURS ARE AN INDICATION OF THE TOPOGRAPHY ONLY. SPOT LEVELS SHOULD BE USED IF DETAILED DESIGN IS TO BE UNDERTAKEN. CONTOUR INTERVAL 0.25.



PLAN SHOWING DETAIL, LEVELS & BOUNDARIES  
 BELOW R.L. 96.0  
 LOT 6 D.P.1058962  
 No. 7 RAILWAY STREET  
 CHATSWOOD

DATE	BY	REVISION	ISSUE
08.06.10	IS/AL	DETAIL UPDATED	B
30.07.08	IS/DW	DETAIL UPDATED (HELP STREET)	A

CONSULTING SURVEYORS		DATE	
DENNY LINKER & CO.		22/04/08	
SYDNEY		RATIO: 1:100	
5th FLOOR 17 RANDEL STREET		DATUM: A.H.D.	
SURRY HILLS N.S.W. 2010		ISSUE	
PH. (02) 9212 4655 FAX (02) 9212 5234		B	
REF. No.: 080406		SHEET SIZE	
DWG. I.D.:		A0	

SEE SHEET 1A

SHEET 1 IN 4 SHEETS

X:\080406\080406-16 7 RAILWAY ST CHATSWOOD\080406-REV-A-SH1.dwg