

NOTES: DA

1. DESIGN RESOLUTION

1.1 The drawings represent general architectural intent for the purpose of the development application only.

1.2 The internal layout is shown indicatively and is subject to further design resolution.

1.3 The dimensions shown are general only and are subject to further design resolution.

1.4 Location of car park entry point is general only and will be confirmed and dimensioned at later stage.

1.5 Location of car park entry point is general only and will be confirmed and dimensioned at later stage.

1.6 Location of car park entry point is general only and will be confirmed and dimensioned at later stage.

1.7 Location of car park entry point is general only and will be confirmed and dimensioned at later stage.

1.8 Ceiling RL (where shown) indicates general ceiling design level only, which does account for service bulkheads or similar partial ceiling provisions.

1.9 Components shown indicatively only and subject to further design development at later stage.

1.10 Location of plant, equipment and services on drawings is general and indicative only, and does not include minor elements, such as vent pipes, lifts, aerials, etc.

2. GRAPHIC PRESENTATION

2.1 Components are generic only and indicative of the architectural design intent. Some colour distinction may occur in the printing process.

2.2 Do not scale off drawings.

3. EXISTING STRUCTURES AND SERVICES

3.1 Existing structures and services is, according to the available survey information and will need to be verified on site at later stage.

3.2 All unchanged site levels are as per the existing survey information.

4. GARAGE ROOM

4.1 Garage rooms are to be filled with a magnetics hold open device with push button release.

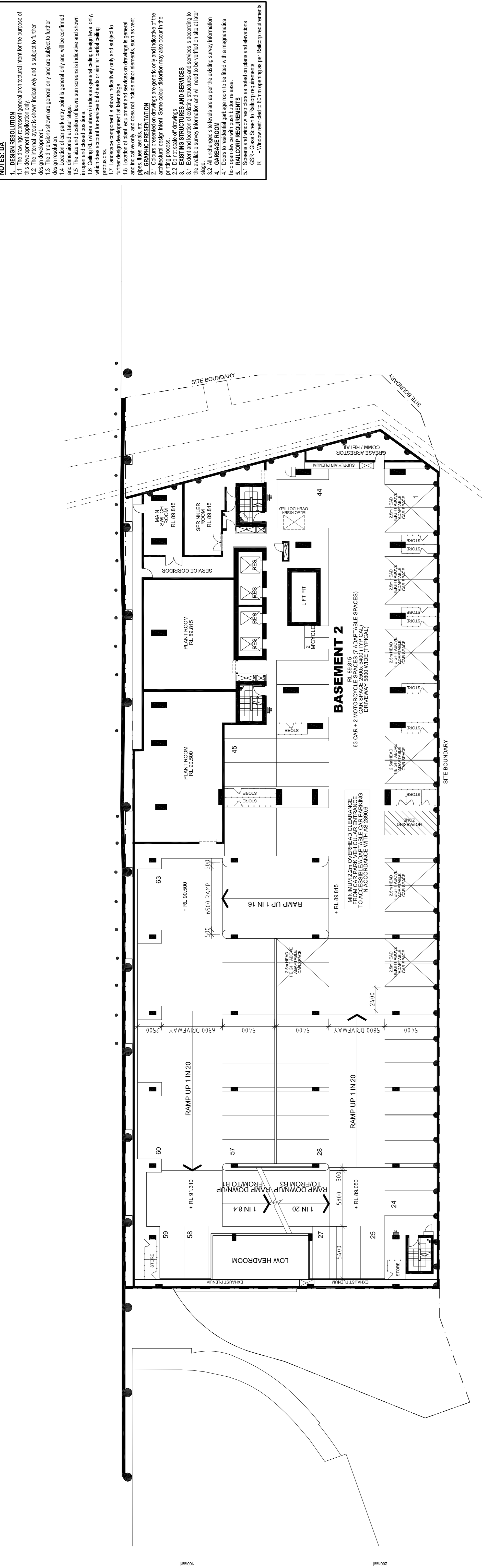
5. RAILCORP REQUIREMENTS

5.1 Screens and window restrictors as noted on plans and elevations

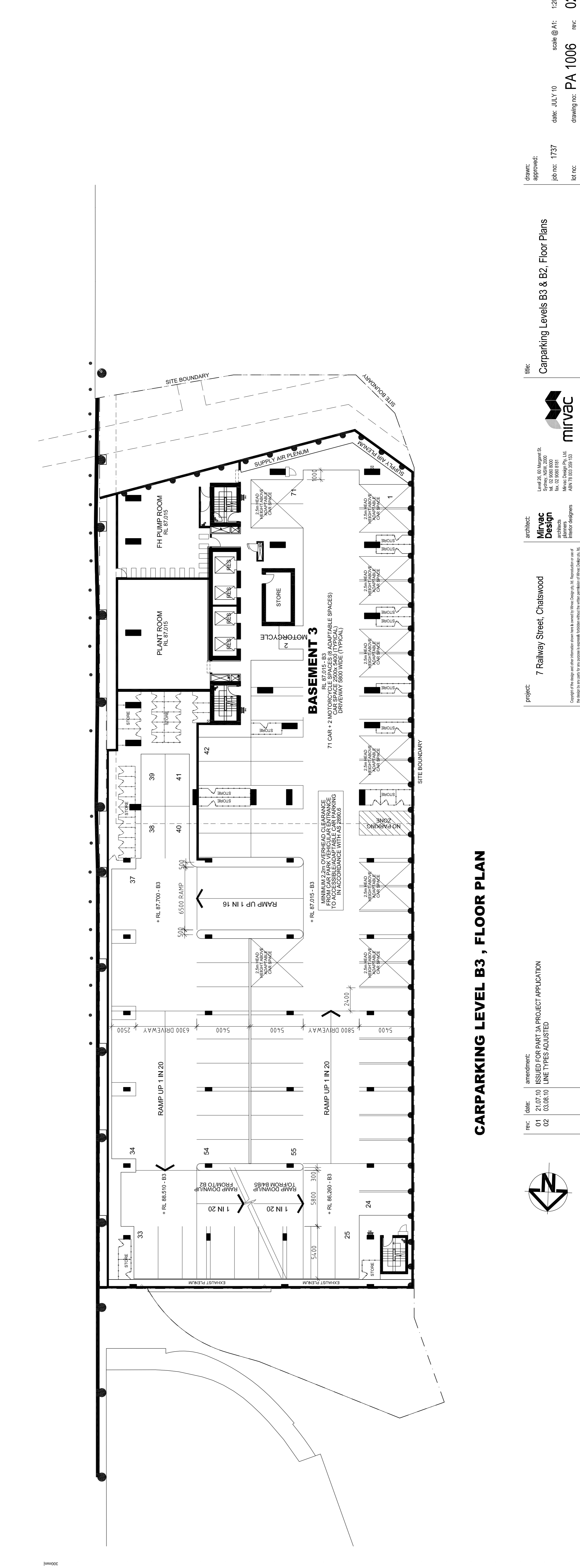
5.2 Glass Screen to Railcorp requirements

5.3 Window restrictors to be in compliance with Railcorp requirements

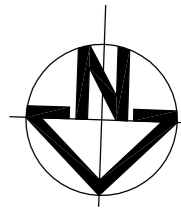
R - Window restrictors to be in compliance with Railcorp requirements



CARPARKING LEVEL B2 , FLOOR PLAN



CARPARKING LEVEL B3 , FLOOR PLAN



REV:	DATE:	AMENDMENT:
01	21.07.10	ISSUED FOR PART 3A PROJECT APPLICATION
02	03.08.10	LINE TYPES ADJUSTED

project: 7 Railway Street, Chatswood

architect: Mirvac Design architects planners

Level 25, 80 Margaret St.
 Sydney NSW 2000
 Tel: 02 9693 9300
 Fax: 02 9693 9381
 Mirvac Design Pty. Ltd.
 100/110 2015 Pitt St

title: Carparking Levels B3 & B2, Floor Plans

drawn: approved:

job no: 1737

date: JULY 10

scale @ A1: 1:200

drawing no: PA 1006

rev: 02