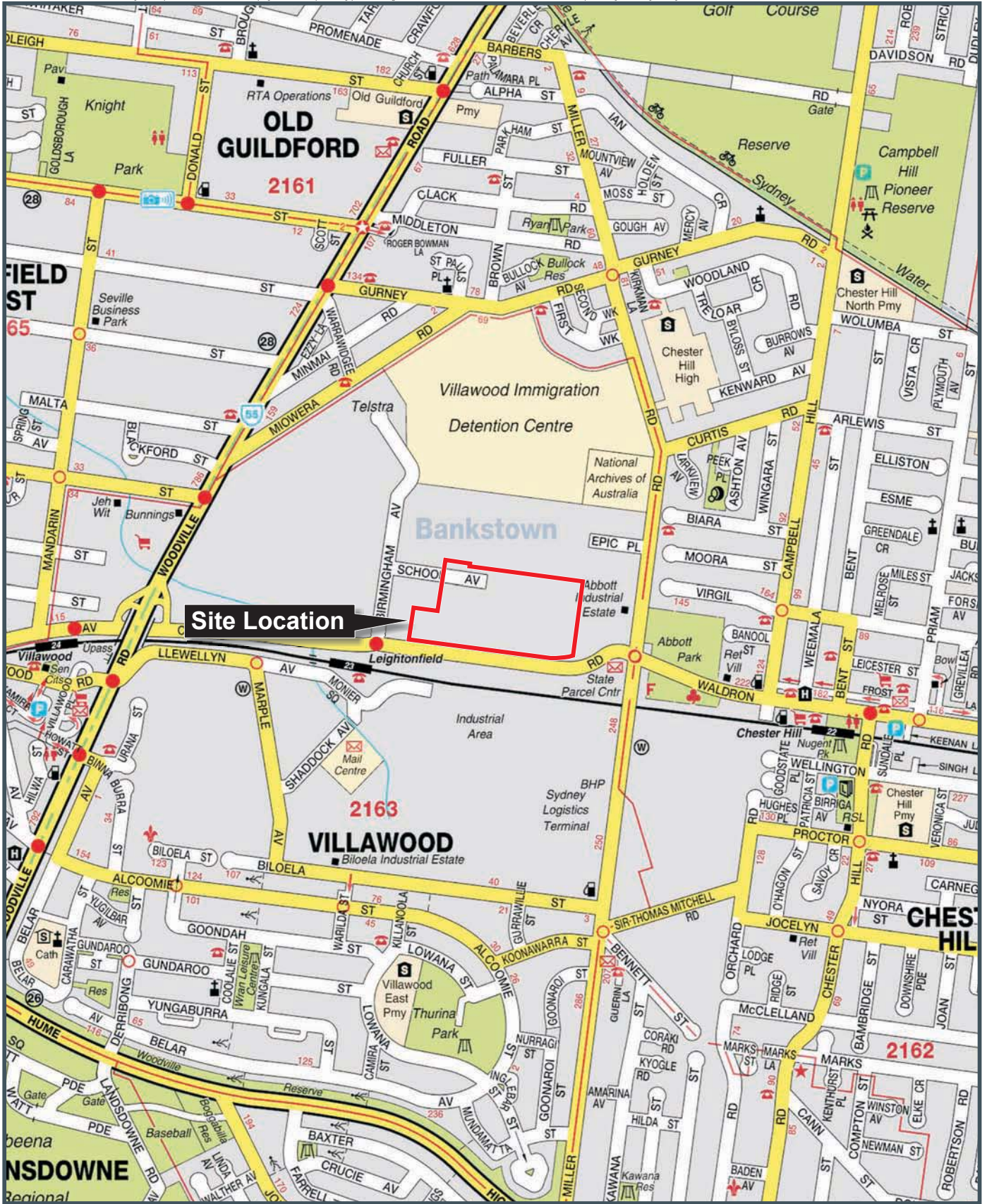


Figures



PROJECT ID: S4149701
 CREATED BY: TO
 LAST MODIFIED: TO 14 04 2010

AECOM
 www.aecom.com

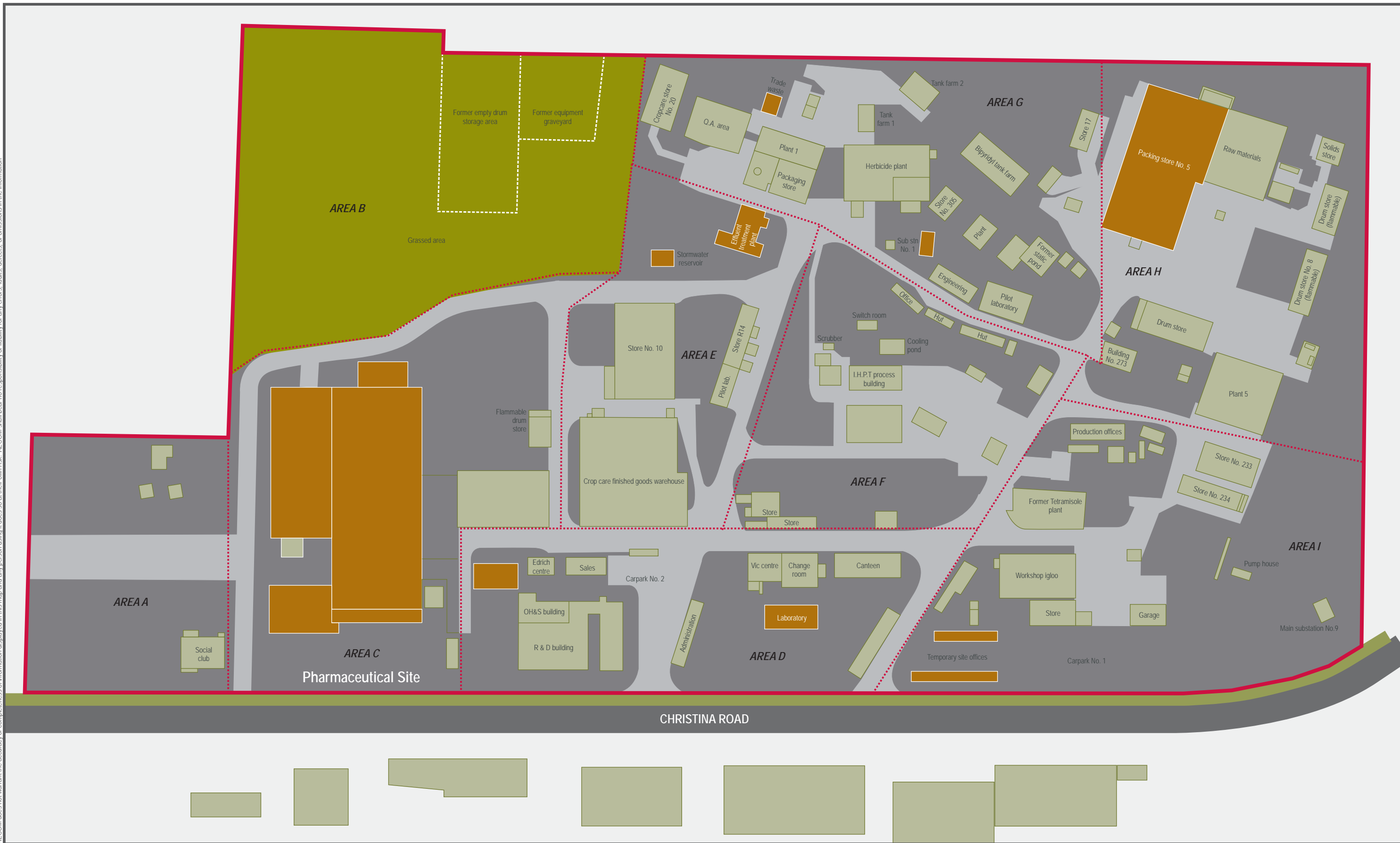
0 600m

Site Location

Orica Australia Pty Ltd
 Remedial Action Plan
 2 Christina Road
 Villawood NSW 2163

Figure 1

AECOM does not warrant the accuracy or completeness of information displayed in this map and any person using it does so at their own risk. AECOM shall bear no responsibility or liability for any errors, faults, defects, or omissions in the information.



PROJECT ID: S4149701
 CREATED BY: TO
 LAST MODIFIED: TO 14 04 2010

AECOM
 www.aecom.com

LEGEND

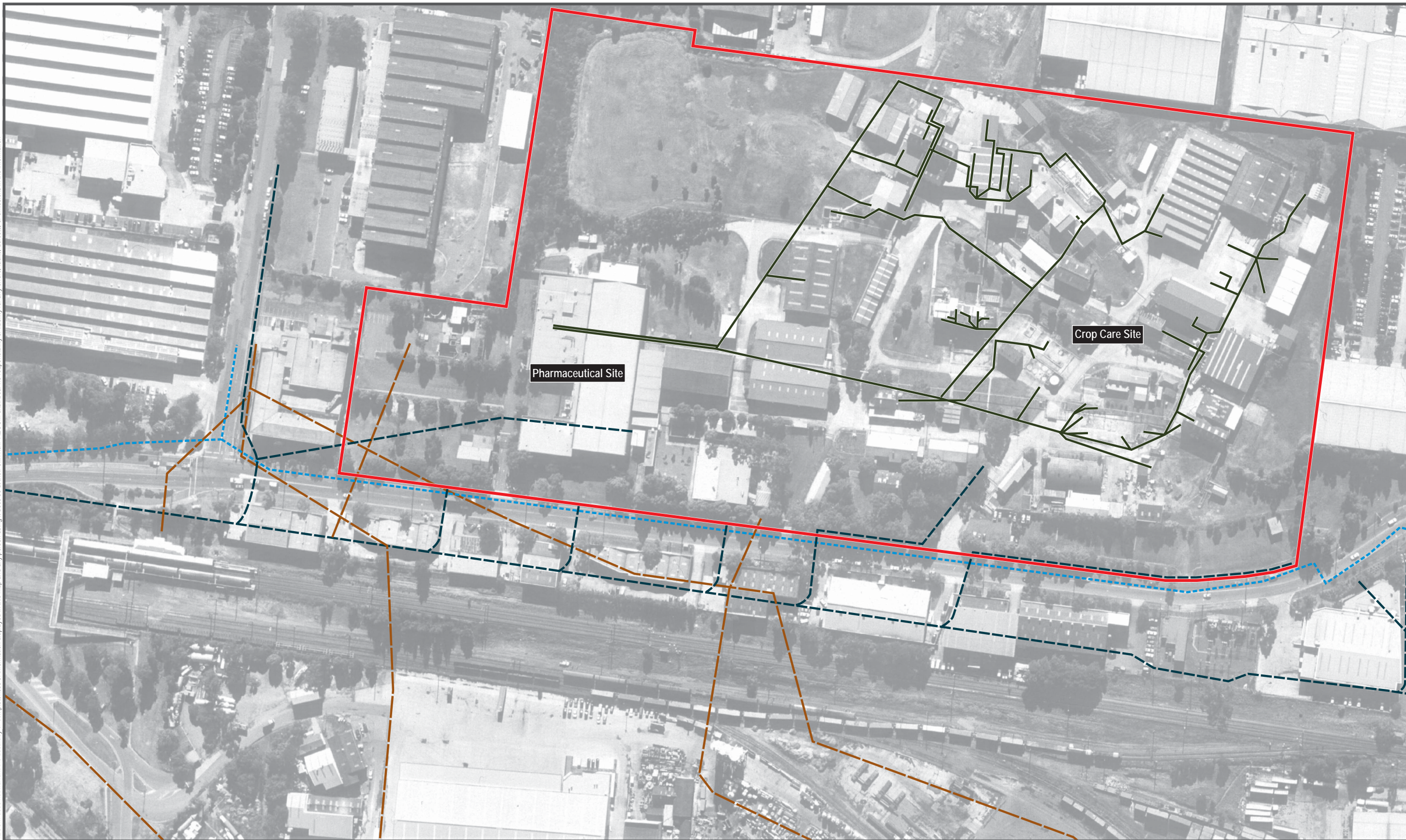
- Site boundary
- Area boundary
- Remaining above ground structures

Current and Historical Site Infrastructure

Orica Australia Pty Ltd
 Remedial Action Plan
 2 Christina Road
 Villawood NSW 2163

Figure
2

AECOM does not warrant the accuracy or completeness of information displayed in this map and any person using it does so at their own risk. AECOM shall bear no responsibility or liability for any errors, faults, defects, or omissions in the information.



PROJECT ID: S4149701
CREATED BY: TO
LAST MODIFIED: TO 14 04 2010



LEGEND

- Site boundary
- - - Approximate stormwater alignment
- · - · - Water - potable
- Contaminated Trade Waste
- - - Sewer - current/closed

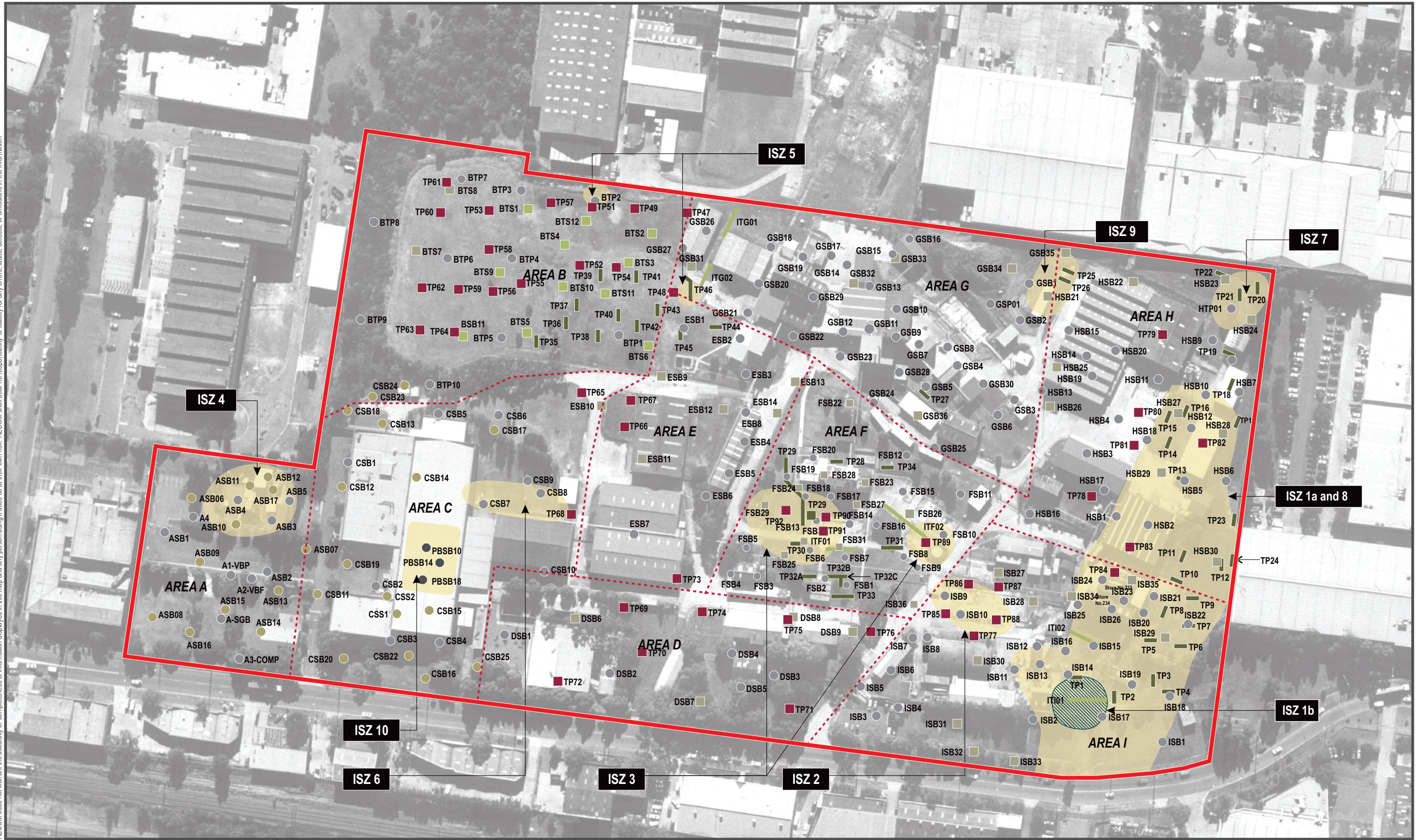
Site Layout and Historic/Existing Drains and Trade Waste Lines

Orica Australia Pty Ltd
Remedial Action Plan
2 Christina Road
Villawood NSW 2163

Figure
3



AECOM does not warrant the accuracy or completeness of information displayed in this map and any person using it does so at their own risk. AECOM shall bear no responsibility or liability for any errors, faults, defects, or omissions in the information.



PROJECT ID: S4149701
 CREATED BY: TO
 LAST MODIFIED: TO 09 02 2011



LEGEND

- Site boundary
- - - Area boundary
- Impacted Soil Zone
- - - CH2MHill investigation trench (2005)
- - - CH2MHill Soil bore locations
- URS Soil sampling locations
- CH2M Hill Soil sampling locations
- HLA Test pit location (2005)
- HLA Test pit location (2006)

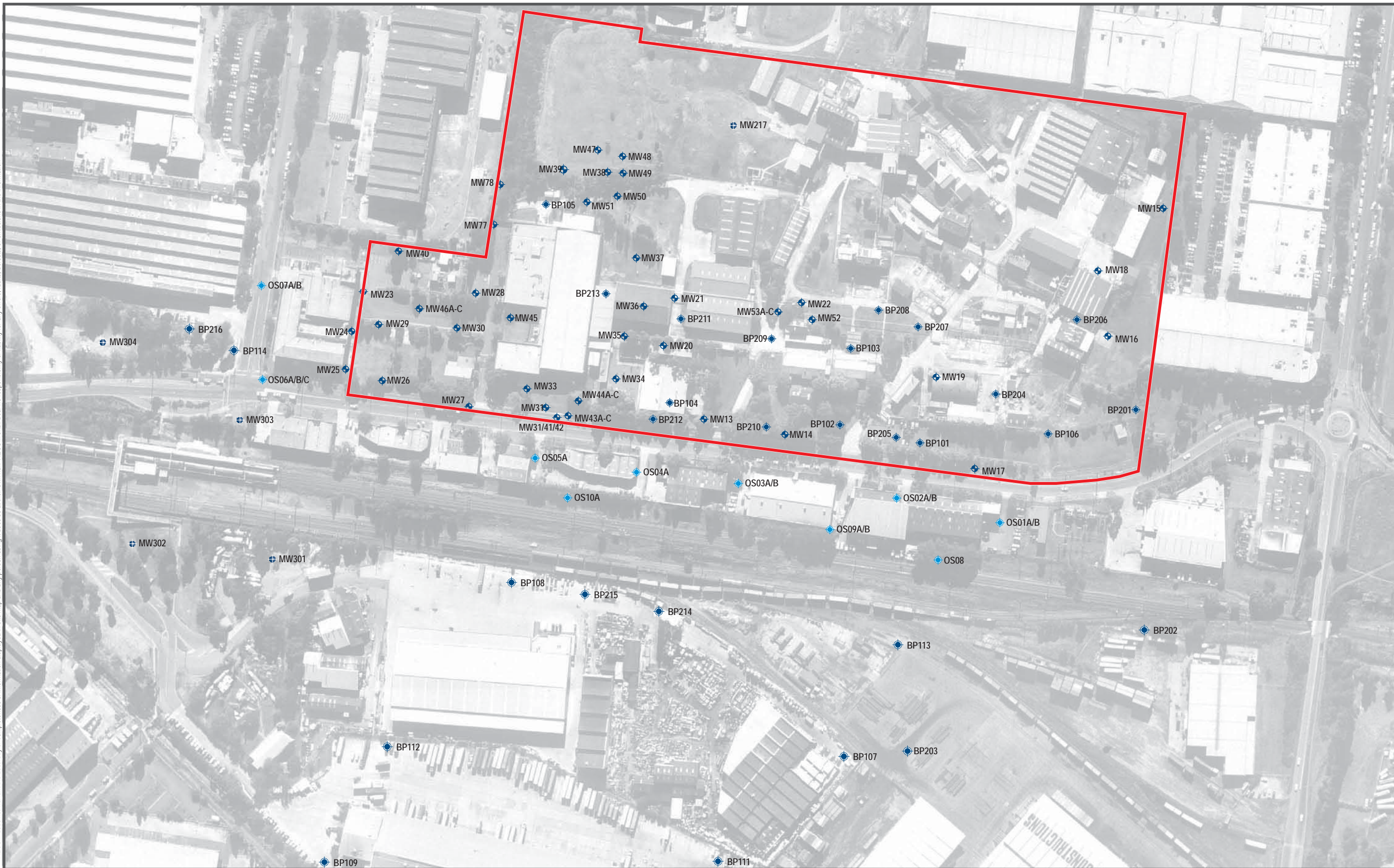
Historic and HLA Soil Sampling Locations and Impacted Soil Zones

Orica Australia Pty Ltd
 Remedial Action Plan
 2 Christina Road
 Villawood NSW 2163

Figure
4









AECOM does not warrant the accuracy or completeness of information displayed in this map and any person using it does so at their own risk. AECOM shall bear no responsibility or liability for any errors, faults, defects, or omissions in the information.



PROJECT ID: S4149701
CREATED BY: TO
LAST MODIFIED: TO 14 04 2010



LEGEND

-  Site boundary
-  CH2MHill Off-Site monitoring well location
-  CH2MHill On-Site monitoring well location
-  URS monitoring well location
-  HLA shallow/deep monitoring well location
-  HLA bundled piezometer location

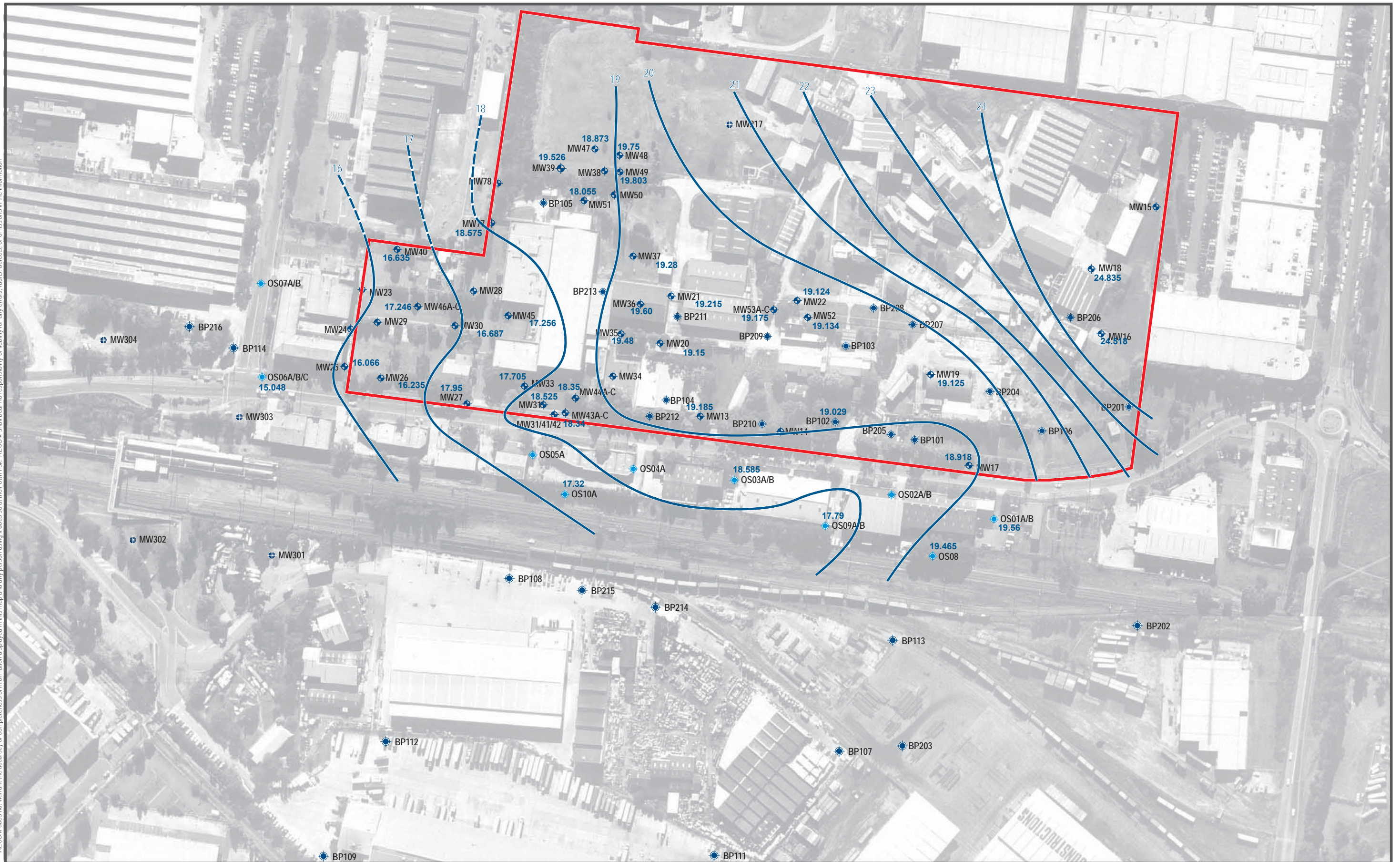


Historic and AECOM Groundwater Sampling Locations

Orica Australia Pty Ltd
Remedial Action Plan
2 Christina Road
Villawood NSW 2163

Figure
5

AECOM does not warrant the accuracy or completeness of information displayed in this map and any person using it does so at their own risk. AECOM shall bear no responsibility or liability for any errors, faults, defects, or omissions in the information.



PROJECT ID: S4149701
 CREATED BY: TO
 LAST MODIFIED: TO 14 04 2010



www.aecom.com

LEGEND

- Site boundary
- Groundwater contour (mAHd)
- H2MHill Off-Site monitoring well location
- ◆ CH2MHill On-Site monitoring well location
- URS monitoring well location
- ⊕ HLA shallow/deep monitoring well location
- ⊕ HLA bundled piezometer location
- 19.465 Standing water level (mAHd)



Shallow Groundwater Potentiometric Surface (Round 1 GME)

Orica Australia Pty Ltd
 Remedial Action Plan
 2 Christina Road
 Villawood NSW 2163

Figure 6