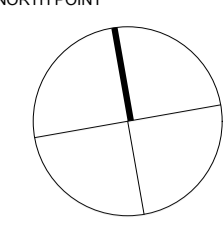
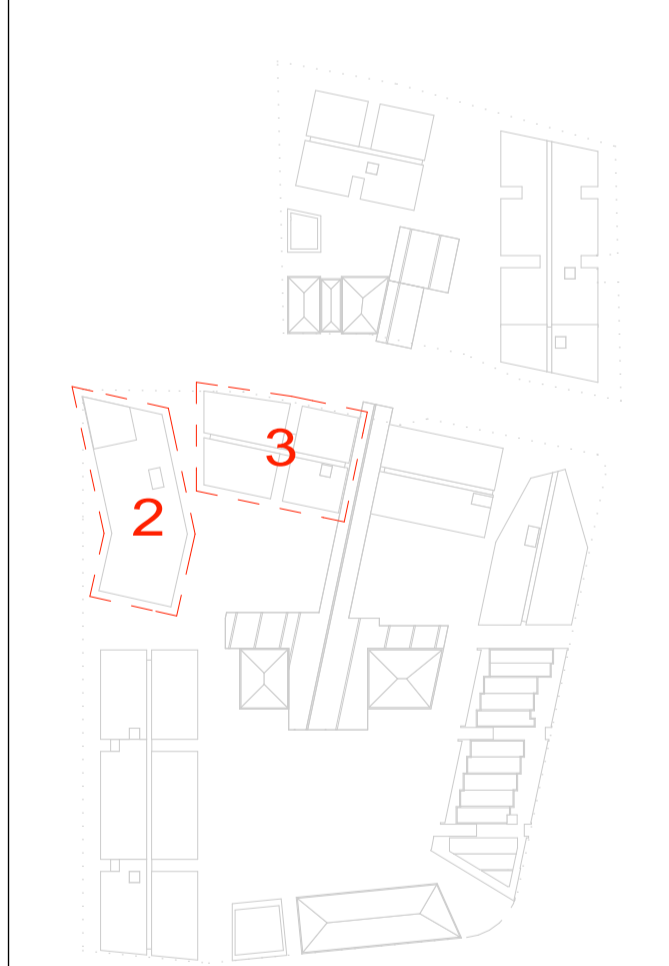


NORTH POINT



REV	DESCRIPTION OF CHANGE	DRAWN	CHECK	DATE
A	FINAL DRAFT	VZ	RB	17.04.12
B	PART 3A SUBMISSION	VZ	RB	20.04.12
C	ENVIRONMENTAL ASSESSMENT ISSUE	SA/SM	PR	22.04.12
D	ENVIRONMENTAL ASSESSMENT ISSUE	SA/SM	PR	02.07.12

- KEY**
- 1 BEDROOM
 - 2 BEDROOM
 - 3 BEDROOM
 - STUDIO



CLIENT
CROWN PROSHA JOINT VENTURE

BKK

CROWN INTERNATIONAL HOLDINGS GROUP
 66 ALFRED STREET
 MILSONS POINT, NSW 2061
 P. 02 9625 0088
 eastlakesinfo@crowngroup.com.au

ARCHITECTS
RICE DAUBNEY
 ANALYSING CREATING AND IMPLEMENTING ARCHITECTURE

110 WALKER STREET | NORTH SYDNEY 2060
 T: 02 9556 2866 | F: 02 9559 3015
 rd@ricedaubney.com.au | www.ricedaubney.com.au
 the rice daubney group (pvt) ltd - abn: 77 001 300 789
 rice daubney trading trust - abn: 58 880 354 983

PROJECT:
**EASTLAKES TOWN CENTRE
 SYDNEY, NSW, 2018**

DRAWING TITLE:
BUILDING 2 & 3 LAYOUTS

SCALE:
1:200 @ A1

CHECKED:
RB

PROJECT NUMBER: **11001** DRAWING NUMBER: **DA 17** ISSUE: **D**



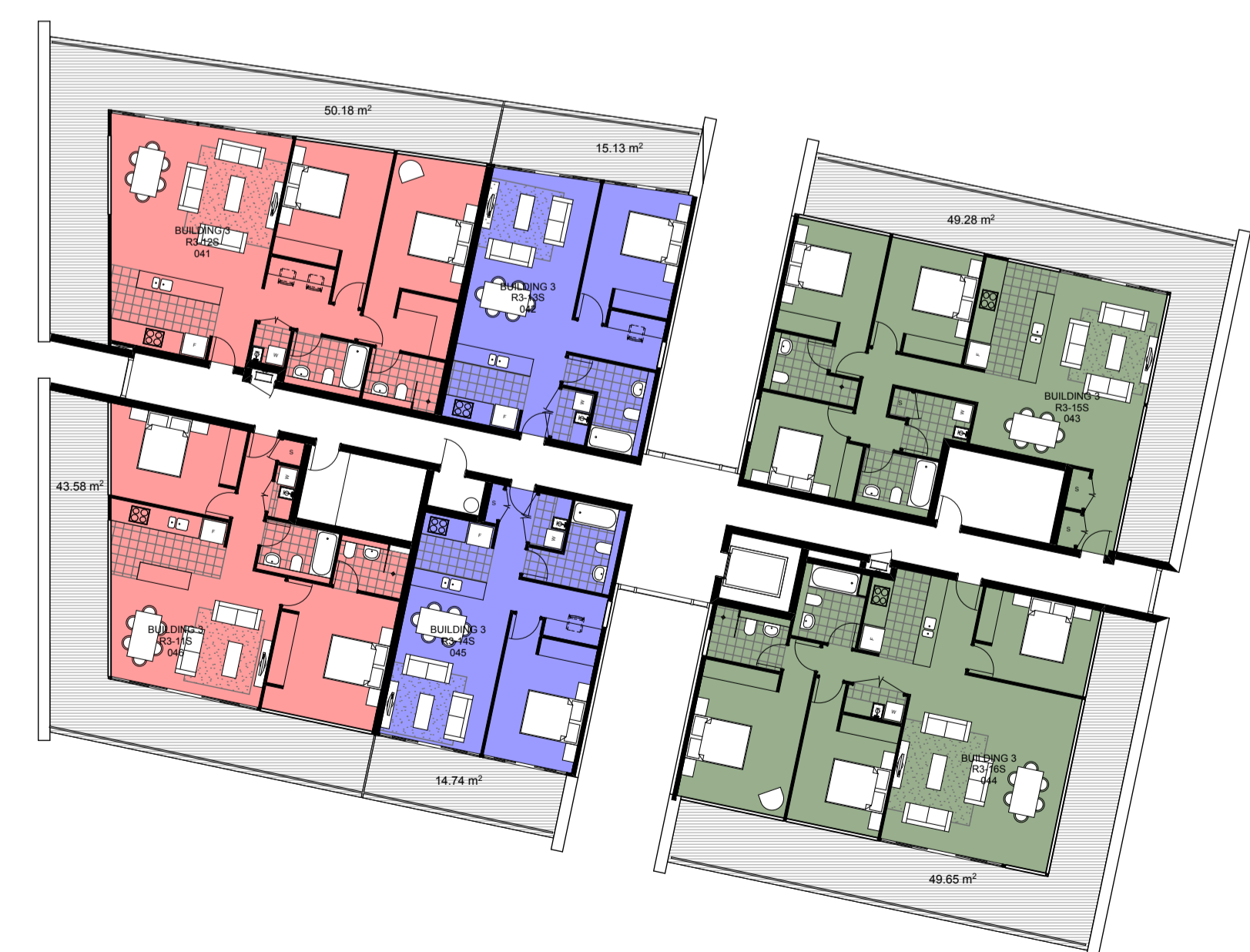
2 PLAN
 BLD2 - LEVEL 3 (TYPICAL) 1:200



3 PLAN
 BLD2 - LEVEL 6 1:200



5 PLAN
 BLD3 - LEVEL 3 (TYPICAL) 1:200



1 PLAN
 BLD3 - LEVEL 5 (PENTHOUSE) 1:200