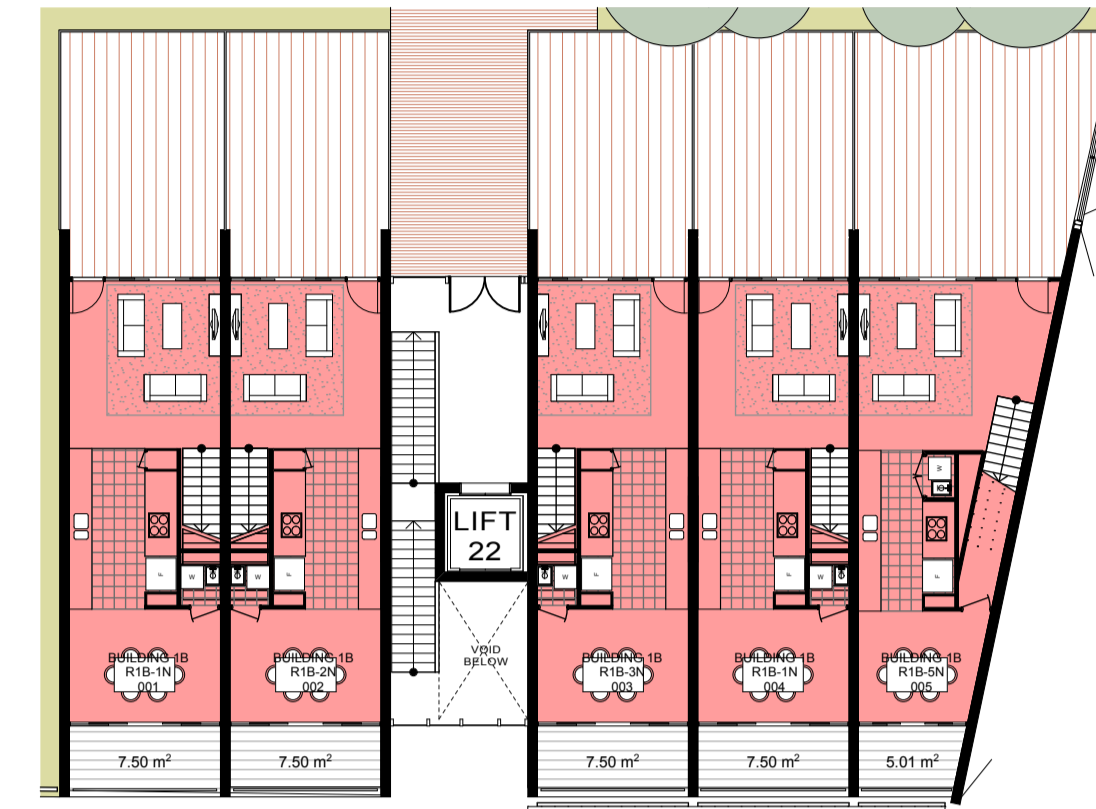




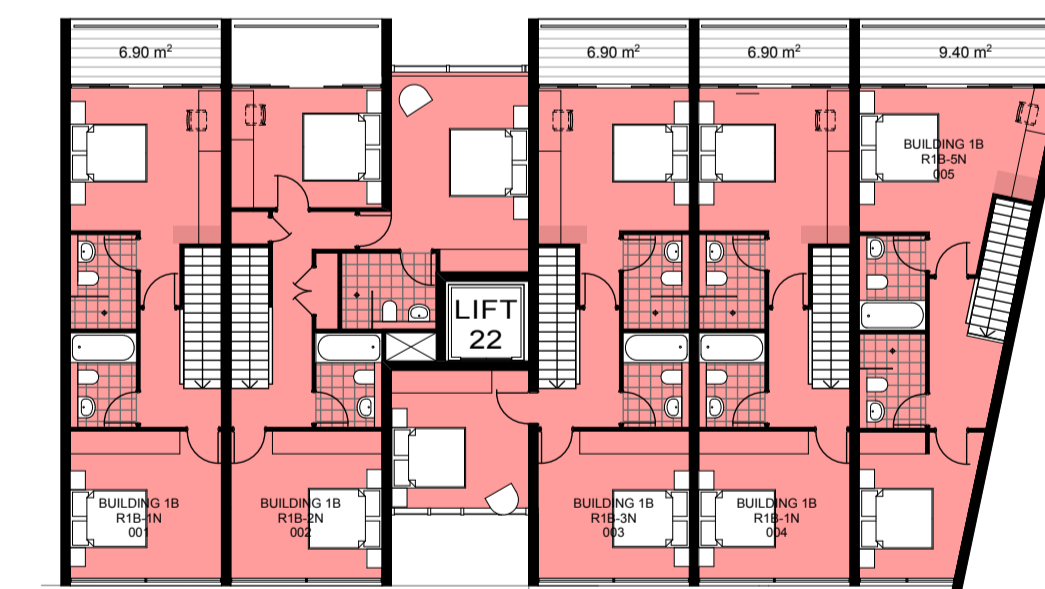
1 PLAN  
BLD1 - LEVEL 3 (TYPICAL) 1:200



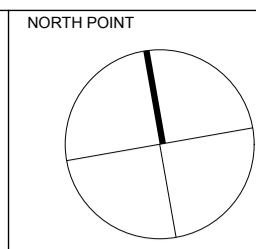
3 PLAN  
BLD1B - LEVEL 1 1:200



2 PLAN  
BLD1 - LEVEL 6 (PENTHOUSE) 1:200

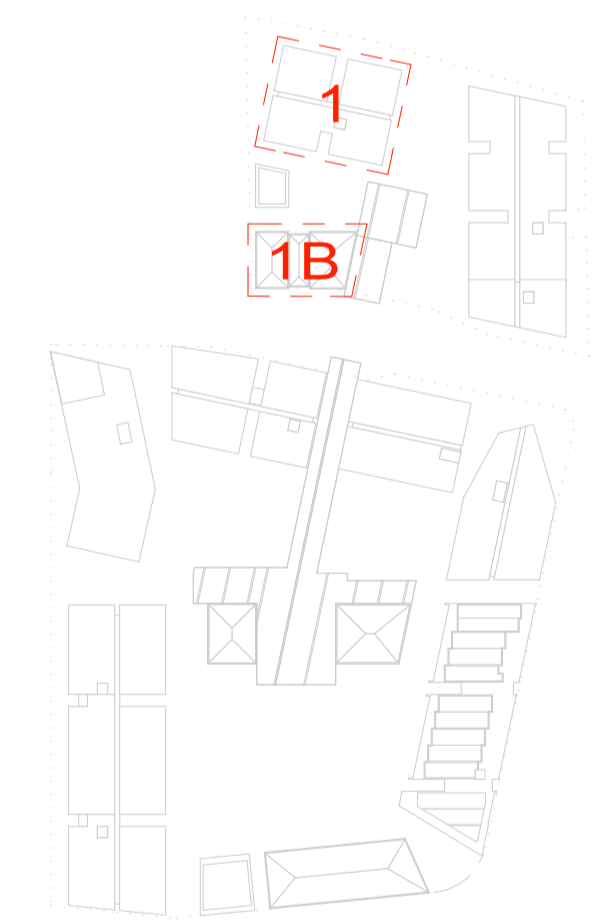


4 PLAN  
BLD1B - LEVEL 2 1:200



REV	DESCRIPTION OF CHANGE	DRAWN	CHECK	DATE
A	FINAL DRAFT	VZ	RB	17.04.12
B	PART 3A SUBMISSION	VZ	RB	20.04.12
C	ENVIRONMENTAL ASSESSMENT ISSUE	SA/GM	PR	22.04.12
D	ENVIRONMENTAL ASSESSMENT ISSUE	SA/GM	PR	02.07.12

- KEY**
- 1 BEDROOM
  - 2 BEDROOM
  - 3 BEDROOM
  - STUDIO



CLIENT  
**CROWN PROSHA JOINT VENTURE**

66 ALFRED STREET  
MILSONS POINT, NSW 2061  
P. 02 9625 0088  
eastlakesinfo@crown.com.au

ARCHITECTS  
**RICE DAUBNEY**  
ANALYSING CREATING AND IMPLEMENTING ARCHITECTURE

110 WALKER STREET | NORTH SYDNEY 2060  
T: 02 9556 2866 | F: 02 9559 3015  
rd@ricedaubney.com.au | www.ricedaubney.com.au  
the rice daubney group (pty) ltd. abn: 77 001 300 789  
rice daubney trading trust - abn: 58 880 354 983

PROJECT:  
**EASTLAKES TOWN CENTRE  
SYDNEY, NSW, 2018**

DRAWING TITLE:  
**BUILDING 1 & 1B LAYOUTS**

SCALE: <b>1:200 @ A1</b>	CHECKED: <b>RB</b>
PROJECT NUMBER: <b>11001</b>	DRAWING NUMBER: <b>DA 15</b>
	ISSUE: <b>D</b>