

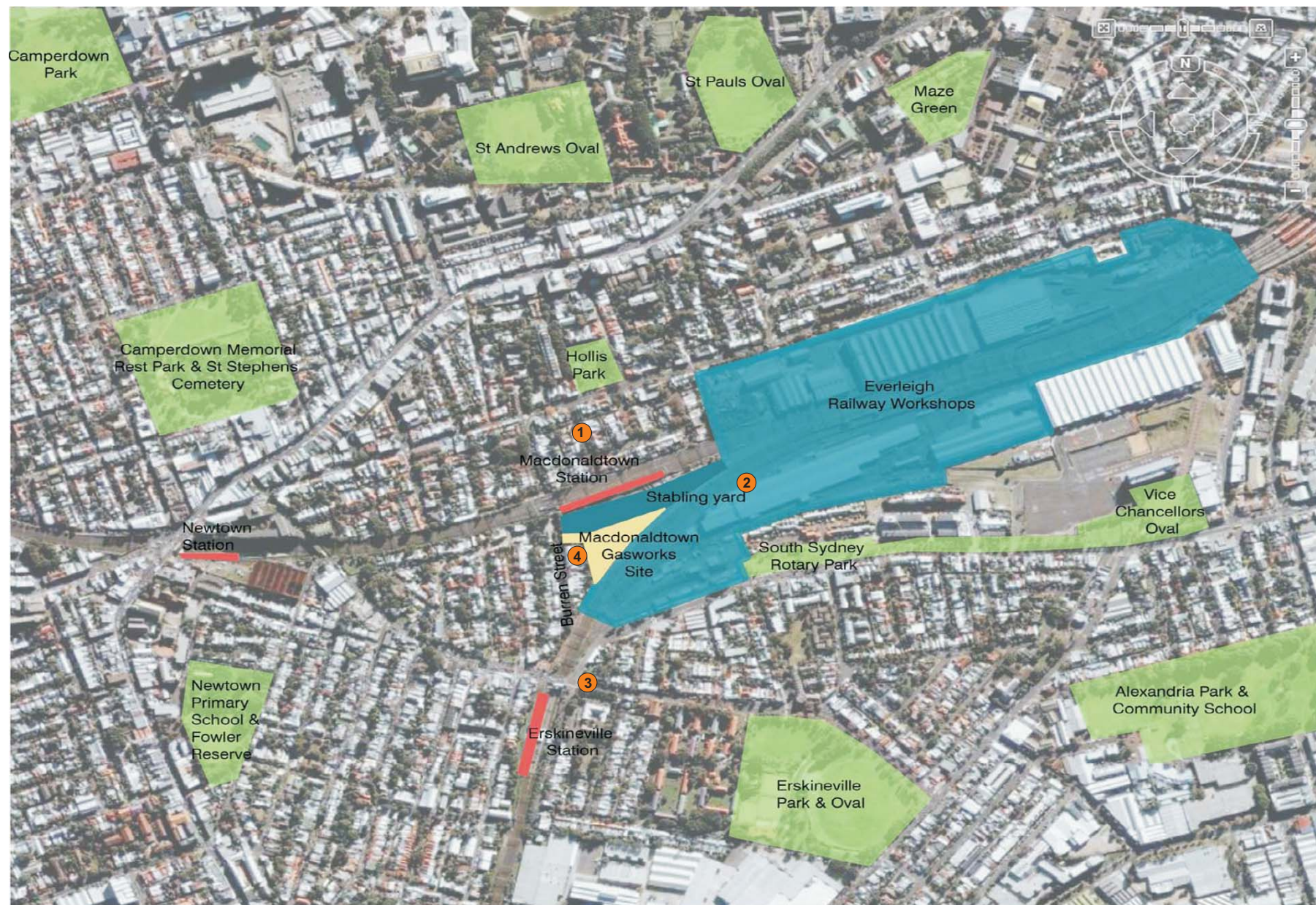
8 Limitations

This report has been prepared for use by the client who commissioned the works in accordance with the project brief only and has been based in part on information obtained from other parties. The advice herein relates only to this project and all results conclusions and recommendations made should be reviewed by a competent person with experience in environmental investigations, before being used for any other purpose.

JBS Environmental Pty Ltd accepts no liability for use or interpretation by any person or body other than the client. This report should not be reproduced without prior approval by the client, or amended in any way without prior approval by JBS Environmental Pty Ltd, and should not be relied upon by other parties, who should make their own enquires.

This report does not provide a complete assessment of the potential hazards associated with the site, and it is limited to the scope defined herein. Should information become available regarding conditions at the site including previously unknown sources of potential hazards, JBS Environmental Pty Ltd reserves the right to review the report in the context of the additional information.

Figures



As Adopted from Dickson Rothschild 2007

Approximate Scale

0m 500m

Legend

- ① Potential External Viewing Location of the site - Wilson Street
- ② Potential External Viewing Location of the site - Former North Eveleigh Railyard and Australian Technology Park
- ③ Potential External Viewing Location of the site - Railway Parade
- ④ Potential External Viewing Location of the site - Burren Street



Figure 1: Site Locality Map and Context

Client: Incoll Management Job Number: 40913

Project: Visual Impact Assessment

Site: Former Macdonaldtown Gasworks

File Name: 40913 R05 Figure 1



Figure 2 **Current Macdonaldtown Site Plan**

CH2M Hill (2007)
Note- All locations shown are approximate only