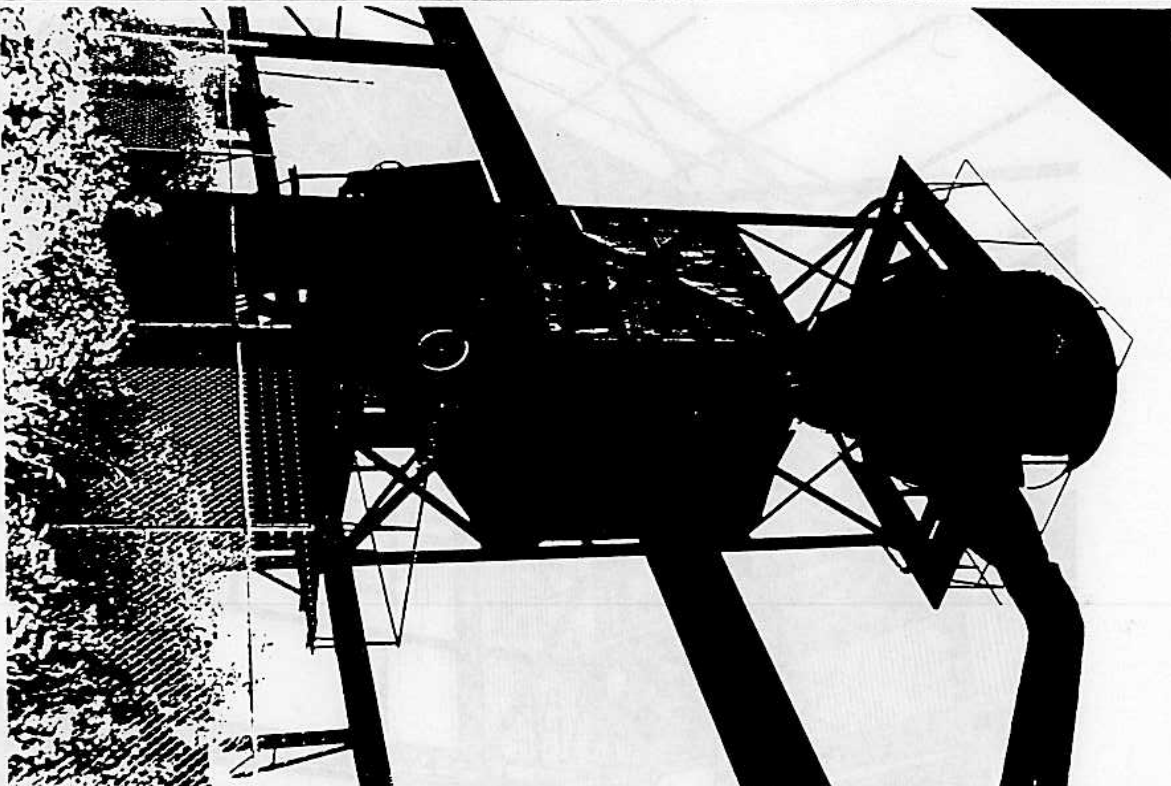


PRECINCT G

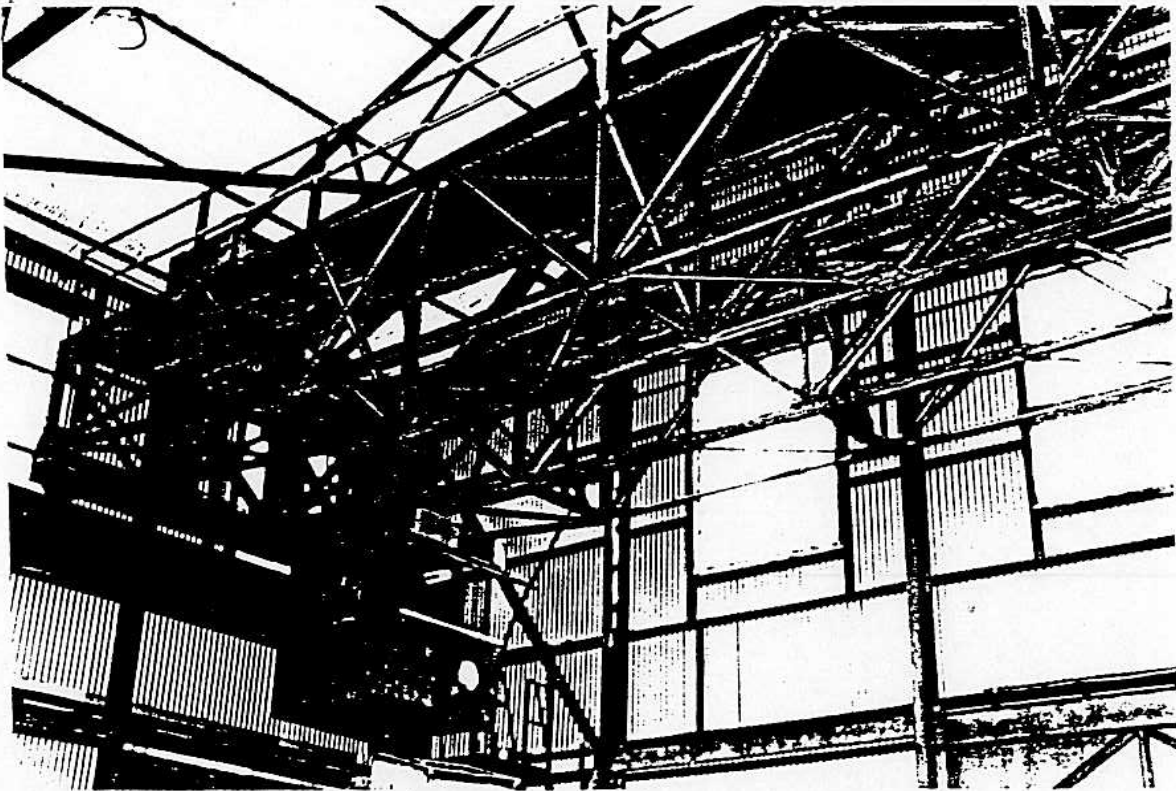
CHULLORA HERITAGE ASSESSMENT, 1990

MACHINERY/PLANT

NAME OF ITEM: Sawdust Cyclone	
No. M24	Map Ref:
Location: In upper yard beside the through track. Precinct G	
Condition: Poor	
Associated Items: Sawbench Shed B64A, Timber Trolley M67	
<p>Description: A large sawdust cyclone which fed onto trucks on the adjacent rail track. The cyclone has been subject to at least one fire and is no longer a safe structure. The cyclone was supplied with sawdust from the band saw rooms. The cyclone consists of a steel frame which supports the hopper which fed into an unenclosed timber bin. The collectors chutes were operated manually from the hand wheels on the first floor level platform. The two chutes were separately operated. The structure has been fenced off and the base has been lined with corrugated iron to prevent access.</p>	
SIGNIFICANCE ASSESSMENT Historic Association 2/5 Technological Importance 3/5 Structural Integrity 2/5 Relative Rarity 2/5 Operational Ability 2/5	INFORMANTS: Colin Barclay REFERENCES:
RECOMMENDATION: Record	PHOTOGRAPHS: B & W: 90-038-7-15
	
Recorded by: D. Godden & J. Sheppard	Date: May 1990

**CHULLORA
HERITAGE ASSESSMENT, 1990**

MACHINERY/PLANT

NAME OF ITEM: Overhead Crane			
No. M26		Map Ref:	
Location: Inside carpenters shop per way No. 1		Precinct G	
Condition: Operational			
Associated Items: Furnace Room M27A, Original Furnace Chimney M24, Sawdust Hopper M34, Carpenters/Sawmill shop B26, Timber Rack B64.			
Description: 3TODI 600V Overhead roof crane, appears to be in working order. The crane was used for moving machines and materials within the carpenters shop. Constructed from welded and rivetted angle section. Possibly built by Chullora workshops - No name plates.			
SIGNIFICANCE ASSESSMENT Historic Association 2/5 Technological Importance 3/5 Structural Integrity 2/5 Interpretive Ability 3/5 Relative Rarity -/5 Operational Ability 1/5		INFORMANTS: Col Barclay REFERENCES:	
RECOMMENDATION: Record		PHOTOGRAPHS: B & W: Slides:	
			
Recorded By: D. Godden & J. Sheppard		Date: May, 1990	

CHULLORA**HERITAGE ASSESSMENT, 1990****BUILDING/STRUCTURE****NAME OF ITEM:** Carpenters/Sawmill shop**No.** B26**Map Ref:****Location:** South/west portion of site near the centre of per way No. 2

Precinct G

Condition:**Associated Items:** Timber rack B64, OH Crane M26, Sawdust hopper M34, Furnace Room & Chimney M27, M27A.

Description: Large steel framed shed-clad in corrugated iron, recently refurbished. The shed has a single gable running its length. The windows are located at second storey level. The windows on each side of the shed have been sheathed in corrugated iron, but the end windows remain as 20 pane windows. This shed has skillion roofed additions on each side. There are timber racks to the west and store and sawdust rooms to the east. The sawmill has crane rail guides which run the length of the building and project some 80m into the yard. The crane was used to bring timber from the breakdown saw bench to the breast bench in the mill

SIGNIFICANCE ASSESSMENT

2/5

Aesthetic Value

2/5

Historic Association

4/5

Technological Importance

2/5

Structural Integrity

3/5

Interpretive Ability

1/5

Social Significance

1/5

INFORMANTS:**REFERENCES:****RECOMMENDATION:** Record**PHOTOGRAPHS:**

B & W:

Slides:

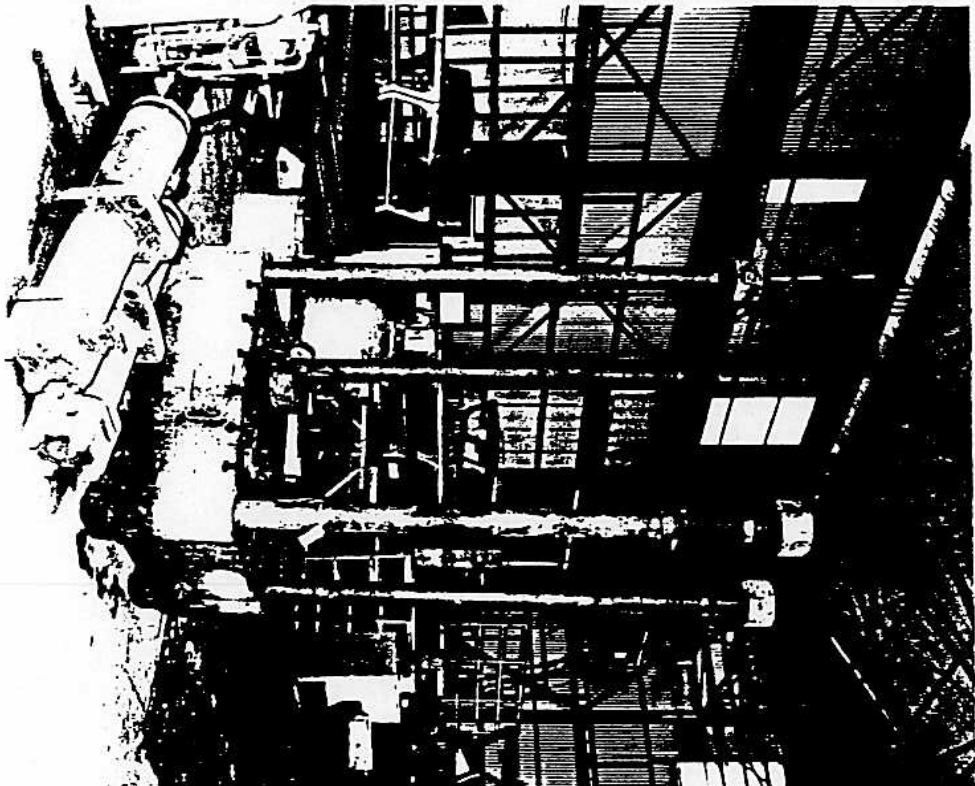


Recorded By: D. Godden & J. Sheppard

Date: May, 1990

CHULLORA
HERITAGE ASSESSMENT, 1990

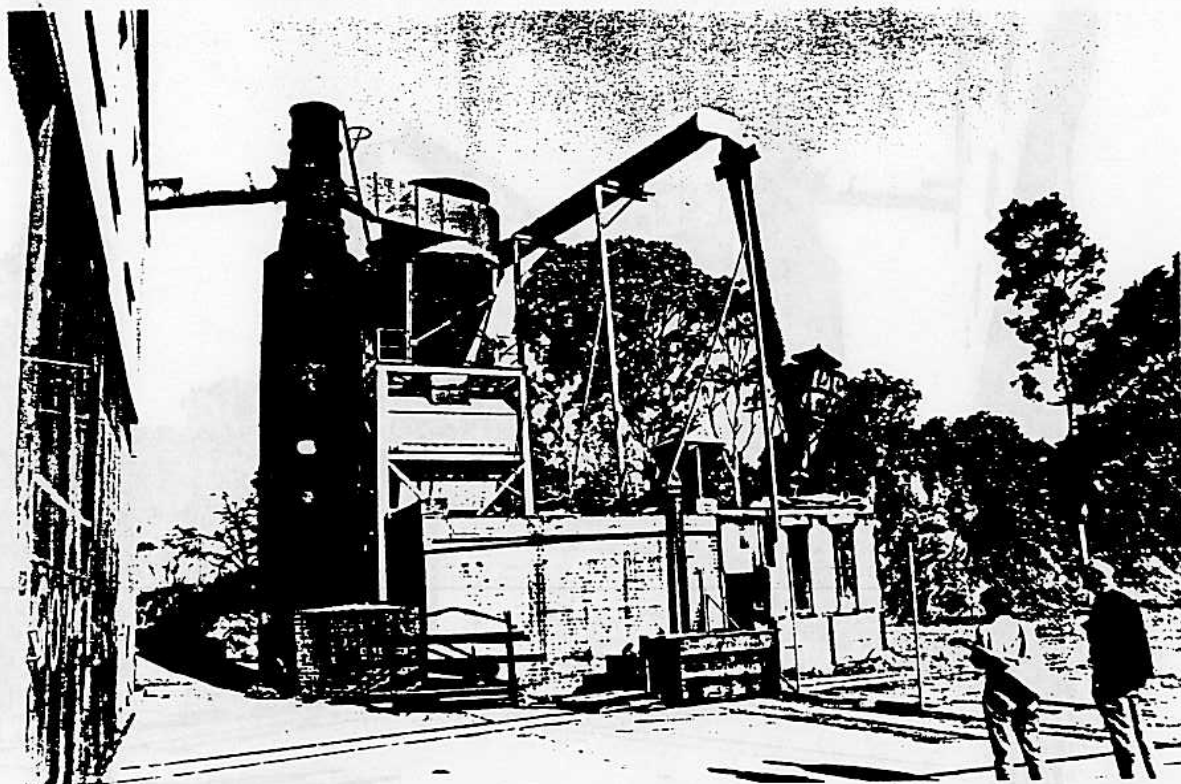
MACHINERY/PLANT

NAME OF ITEM: Hydraulic Press		
No. M26A	Map Ref:	
Location:	In the Carpenters/Sawmill Building - Relocated	Precinct G
Condition:	Dismantled	
Associated Items:		
Description: Fielding and Platt Ltd Gloucester Engineers, about 200 ton operating on 40 psi. Original use and position unknown		
SIGNIFICANCE ASSESSMENT		INFORMANTS:
Historic Association	3/5	
Technological Importance	3/5	
Structural Integrity	2/5	REFERENCES:
Relative Rarity	3/5	
Operational Ability	3/5	
RECOMMENDATION: Consider for Conservation.		PHOTOGRAPHS: B & W: 90-038-3-4
		
Recorded by: D. Godden & J. Sheppard		Date: May 1990

CHULLORA HERITAGE ASSESSMENT, 1990

MACHINERY/PLANT

NAME OF ITEM: Original Furnace Chimney													
No. M27	Map Ref:												
Location: South of carpenters/sawmill building Precinct G													
Condition: Poor													
Associated Items: Furnace Room M27A; OH Crane in shed M26, Sawdust Hopper M34, Carpenters/Sawmill shop B26, Timber Rack M64.													
Description: This was the original furnace chimney, probably made up on site. The chimney consists of a number of boilers rivetted together. The boiler inlets are filled to provide a continuous surface. The chimney is 12-14 metres high.													
SIGNIFICANCE ASSESSMENT <table> <tr><td>Historic Association</td><td>2/5</td></tr> <tr><td>Technological Importance</td><td>3/5</td></tr> <tr><td>Structural Integrity</td><td>2/5</td></tr> <tr><td>Interpretive Ability</td><td>3/5</td></tr> <tr><td>Relative Rarity</td><td>2/5</td></tr> <tr><td>Operational Ability</td><td>2/5</td></tr> </table>	Historic Association	2/5	Technological Importance	3/5	Structural Integrity	2/5	Interpretive Ability	3/5	Relative Rarity	2/5	Operational Ability	2/5	INFORMANTS: REFERENCES:
Historic Association	2/5												
Technological Importance	3/5												
Structural Integrity	2/5												
Interpretive Ability	3/5												
Relative Rarity	2/5												
Operational Ability	2/5												
RECOMMENDATION: Record	PHOTOGRAPHS: B & W: 90-038-3- Slides:												



Recorded By: D. Godden & J. Sheppard

Date: May, 1990

GODDEN MACKAY PTY. LTD.

200 Commonwealth Street, Surry Hills

**CHULLORA
HERITAGE ASSESSMENT, 1990**

MACHINERY/PLANT

NAME OF ITEM: Furnace Room													
No. M27A	Map Ref:												
Location: South/west of carpenters shop	Precinct G												
Condition: Poor													
Associated Items: Timber Rack B64, OH Crane in shed M26, Sawdust Hopper M34, Carpenters/Sawmill shop B26, Original furnace chimney													
<p>Description: The furnace room recieved wood shavings from the timber mill and sawdust shop. The sawdust cyclone hopper is now at an angle. The furnace room itself is a brick structure which had a barrel vault brick roof which has recently been demolished. The hopper released sawdust into bags for use on station floors etc.</p>													
<p>SIGNIFICANCE ASSESSMENT</p> <table> <tr><td>Historic Association</td><td>2/5</td></tr> <tr><td>Technological Importance</td><td>3/5</td></tr> <tr><td>Structural Integrity</td><td>2/5</td></tr> <tr><td>Interpretive Ability</td><td>/5</td></tr> <tr><td>Relative Rarity</td><td>2/5</td></tr> <tr><td>Operational Ability</td><td>2/5</td></tr> </table>	Historic Association	2/5	Technological Importance	3/5	Structural Integrity	2/5	Interpretive Ability	/5	Relative Rarity	2/5	Operational Ability	2/5	<p>INFORMANTS:</p> <p>REFERENCES:</p>
Historic Association	2/5												
Technological Importance	3/5												
Structural Integrity	2/5												
Interpretive Ability	/5												
Relative Rarity	2/5												
Operational Ability	2/5												
RECOMMENDATION: Record	<p>PHOTOGRAPHS:</p> <p>B & W: 90-038-3 Slides:</p>												



Recorded By: D. Godden & J. Sheppard

Date: May, 1990

GODDEN MACKAY PTY. LTD.

200 Commonwealth Street, Surry Hills