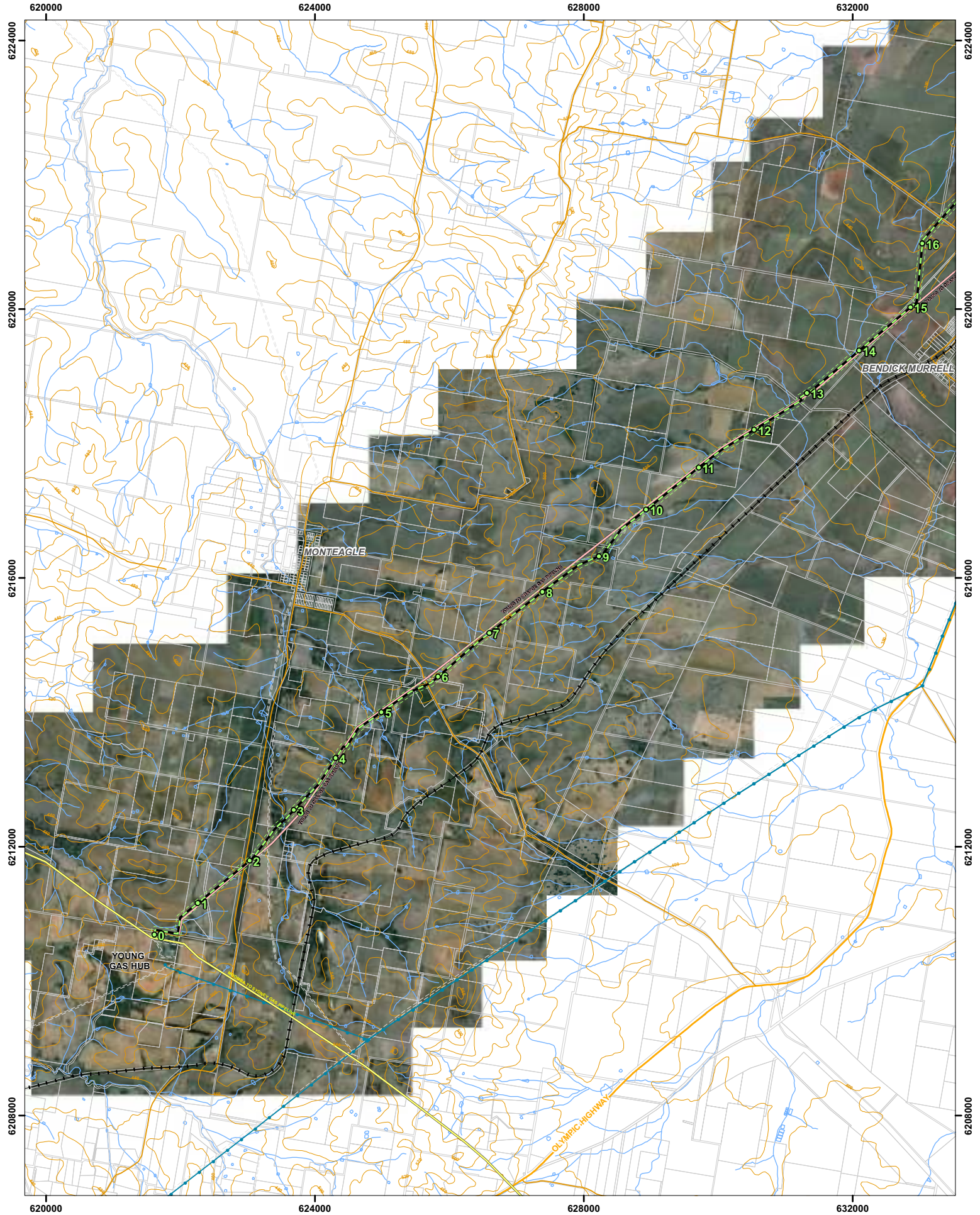




## Appendix C – Route Maps (satellite images of pipeline route, route corridor, conservation reserves etc.)



- |   |              |            |       |          |                   |                         |               |
|---|--------------|------------|-------|----------|-------------------|-------------------------|---------------|
| 100m Corridor                           | State Forest | Powerlines | 132kV | 22kV     | Airstrips         | Easement                | Arterial Road |
| Proposed Pipeline Route (Rev/5a Oct 09) | NPWS Estate  | 500kV      | 66kV  | Railways | Sub-Arterial Road | Contours (10m interval) |               |
| 1km Marker                              |              | 330kV      | 33kV  |          |                   |                         |               |

**Proposed Route**  
ERM Power Young to Wellington Gas Pipeline

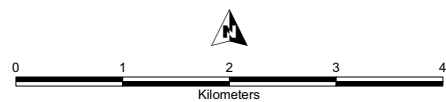
**SATELLITE IMAGE**

**Sheet 1 of 13**

Cadastre: Department of Lands 2006 - 2008  
 Imagery: ICNRS 2002-2007, Google (2008), ALOS (2006-2007)  
 Aboriginal Sites: AAMS 2009  
 Waterways: Department of Lands 2006 - 2008

Contours: Department of Lands 2006 - 2008  
 State Forests: Department of Primary Industries 2008  
 Airfields: Department of Lands 2006 - 2008  
 Powerlines: Department of Lands 2006 - 2008  
 Roads: Department of Lands 2006 - 2008  
 Railways: Department of Lands 2006 - 2008

This plan was prepared for the purpose and exclusive use of ERM POWER and is not to be used for any other purpose. This plan is conceptual, and is not a detail design.  
 This map is not guaranteed to be free from error or omission. LandPartners Limited disclaim liability for any act done or omission made on the basis of the information in this map, and any consequences of such acts or omissions.

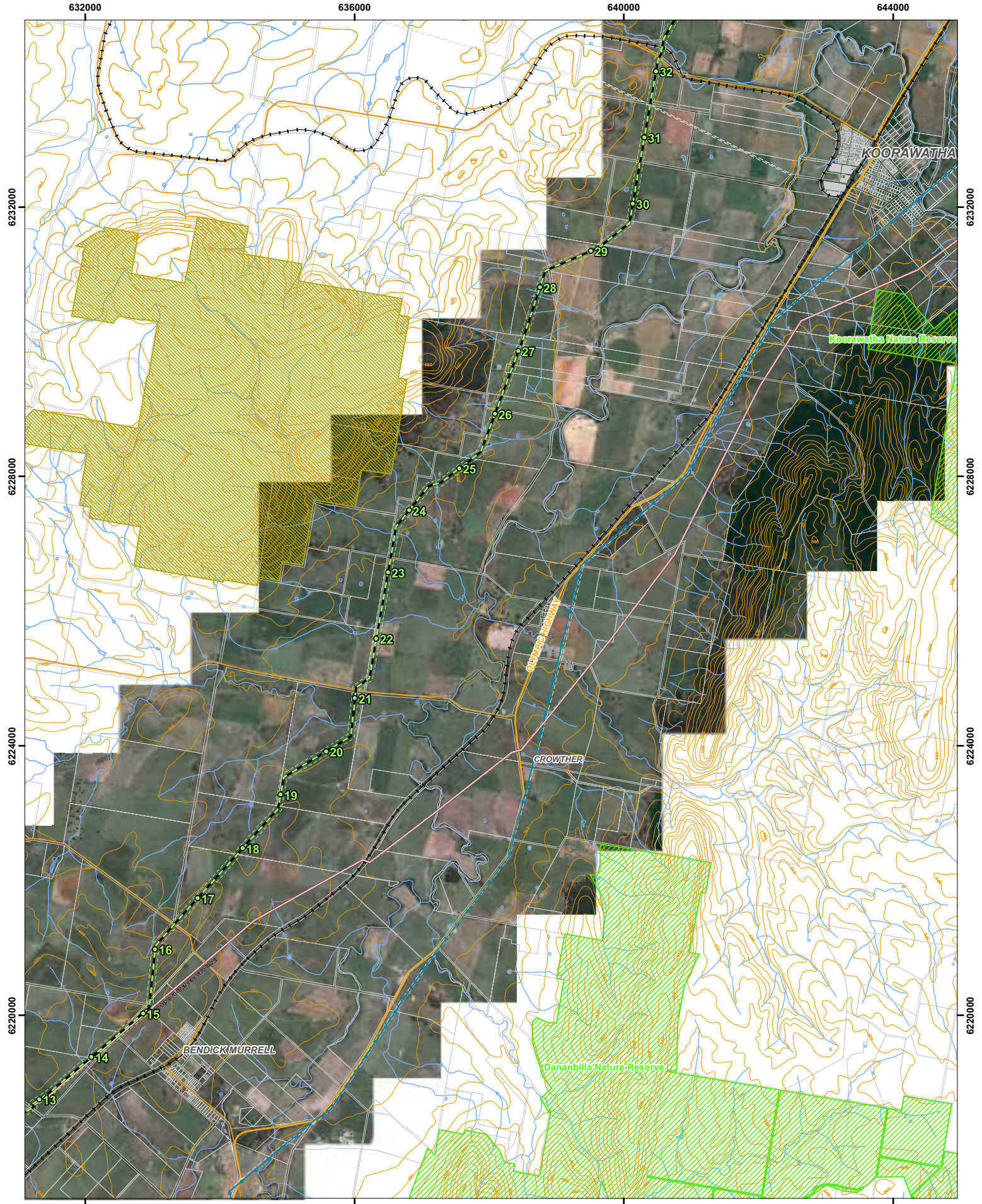


Scale: 1:50,000 @ A3  
 Coordinate System: MGA94 GDA Zone 55

		Client: ERM Power Drawn by: AV Approved by: RK Date: 16-10-2009 Plan: BRK4317-02-031a
--	--	---

Level 3, 99 Melbourne Street  
 South Brisbane QLD 4101  
 PO Box 3916 South Brisbane QLD 4101

T: 61 7 3842 1000  
 F: 61 7 3842 1001  
 E: brisbane@landpartners.com.au  
 W: www.landpartners.com.au



**Proposed Route**  
**ERM Power Young to Wellington Gas Pipeline**

Cadastre: Department of Lands 2006-2008  
 Imagery: ICNRS 2002-2007, Google (2008), ALOS (2006-2007)  
 Aboriginal Sites: AAMS 2009  
 Waterways: Department of Lands 2006-2008

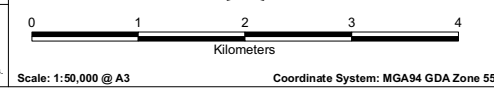
**SATELLITE IMAGE**

Contours: Department of Lands 2006-2008  
 State Forests: Department of Primary Industries 2008  
 Aerials: Department of Lands 2006-2008  
 Powerlines: Department of Lands 2006-2008  
 Roads: Department of Lands 2006-2008  
 Railways: Department of Lands 2006-2008

**Sheet 2 of 13**

Client: ERM Power  
 Drawn by: AJV  
 Approved by: RK  
 Date: 16-10-2009  
 Plan: BRK4317-02-031a

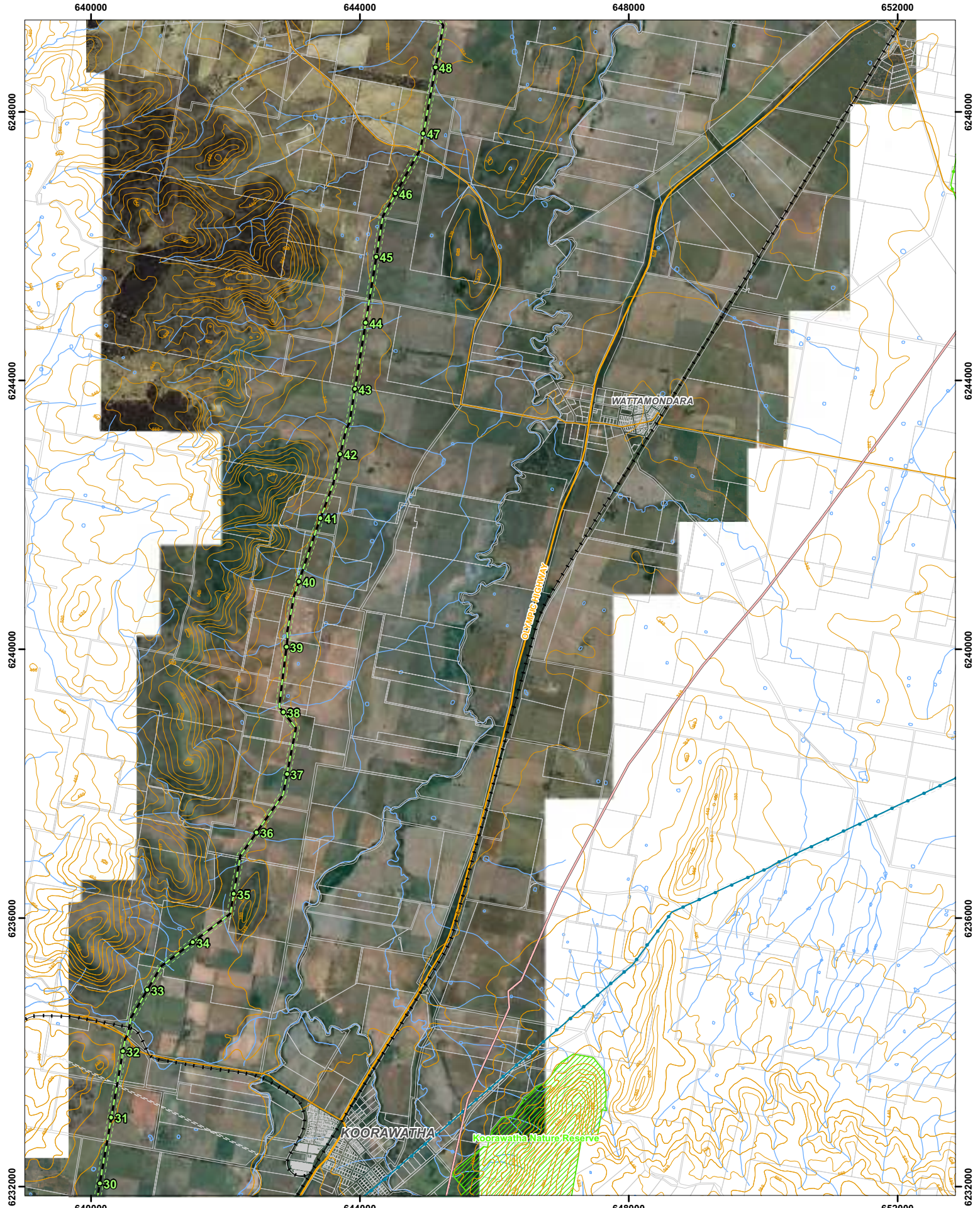
This plan was prepared for the purpose and exclusive use of ERM POWER and is not to be used for any other purpose. This plan is conceptual, and is not a detail design.  
 This map is not guaranteed to be free from error or omission. LandPartners Limited disclaim liability for any act done or omission made on the basis of the information in this map, and any consequences of such acts or omissions.



**ERM** **LANDPARTNERS**

Level 3, 99 Melbourne Street  
 South Brisbane QLD 4101  
 PO Box 3916 South Brisbane QLD 4101

T: 61 7 3842 1000  
 F: 61 7 3842 1001  
 E: brisbane@landpartners.com.au  
 W: www.landpartners.com.au



- |   |              |                   |       |          |                   |                         |                   |
|---|--------------|-------------------|-------|----------|-------------------|-------------------------|-------------------|
| 100m Corridor                           | State Forest | <b>Powerlines</b> | 132kV | 22kV     | Airstrips         | Easement                | Arterial Road     |
| Proposed Pipeline Route (Rev 5a Oct 09) | NPWS Estate  | 500kV             | 66kV  | Railways | Sub-Arterial Road | Contours (10m interval) | Sub-Arterial Road |
| 1km Marker                              |              | 330kV             | 33kV  |          |                   |                         |                   |

**Proposed Route**  
ERM Power Young to Wellington Gas Pipeline

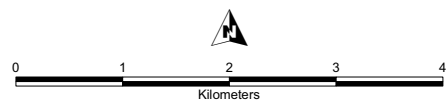
**SATELLITE IMAGE**

**Sheet 3 of 13**

Cadastre: Department of Lands 2006-2008  
 Imagery: ICNRS 2002-2007, Google (2008), ALOS (2006-2007)  
 Aboriginal Sites: AHMS 2009  
 Waterways: Department of Lands 2006-2008

Contours: Department of Lands 2006-2008  
 State Forests: Department of Primary Industries 2008  
 Aerials: Department of Lands 2006-2008  
 Powerlines: Department of Lands 2006-2008  
 Roads: Department of Lands 2006-2008  
 Railways: Department of Lands 2006-2008

This plan was prepared for the purpose and exclusive use of ERM POWER and is not to be used for any other purpose. This plan is conceptual, and is not a detail design.  
 This map is not guaranteed to be free from error or omission. LandPartners Limited disclaim liability for any act done or omission made on the basis of the information in this map, and any consequences of such acts or omissions.



Scale: 1:50,000 @ A3  
 Coordinate System: MGA94 GDA Zone 55

		Client: ERM Power Drawn by: AV Approved by: RK Date: 16-10-2009 Plan: BRW4317-02-031a
--	--	---

Level 3, 99 Melbourne Street  
 South Brisbane QLD 4101  
 PO Box 3916 South Brisbane QLD 4101

T: 61 7 3842 1000  
 F: 61 7 3842 1001  
 E: brisbane@landpartners.com.au  
 W: www.landpartners.com.au



- |   |              |            |       |          |                         |                   |                         |
|---|--------------|------------|-------|----------|-------------------------|-------------------|-------------------------|
| 100m Corridor                           | State Forest | Powerlines | 132kV | 22kV     | Airstrips               | Easement          | Arterial Road           |
| Proposed Pipeline Route (Rev/5a Oct 09) | NPWS Estate  | 500kV      | 66kV  | Railways | Contours (10m interval) | Sub-Arterial Road | Contours (10m interval) |
| 1km Marker                              |              | 330kV      | 33kV  |          |                         |                   |                         |

**Proposed Route**  
ERM Power Young to Wellington Gas Pipeline

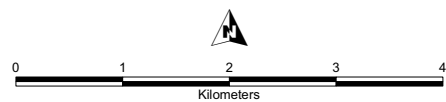
**SATELLITE IMAGE**

**Sheet 4 of 13**

Cadastre: Department of Lands 2006 - 2008  
Imagery: ICNRS 2002-2007, Google (2008), ALOS (2006-2007)  
Aboriginal Sites: AAMS 2009  
Waterways: Department of Lands 2006 - 2008

Contours: Department of Lands 2006 - 2008  
State Forests: Department of Primary Industries 2008  
Aerials: Department of Lands 2006 - 2008  
Powerlines: Department of Lands 2006 - 2008  
Roads: Department of Lands 2006 - 2008  
Railways: Department of Lands 2006 - 2008

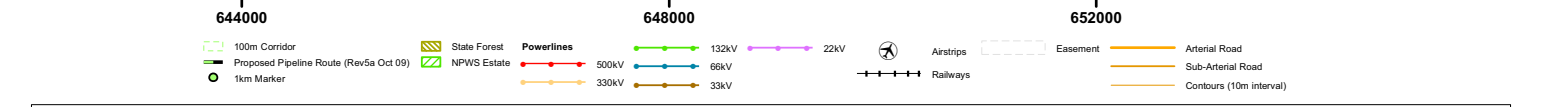
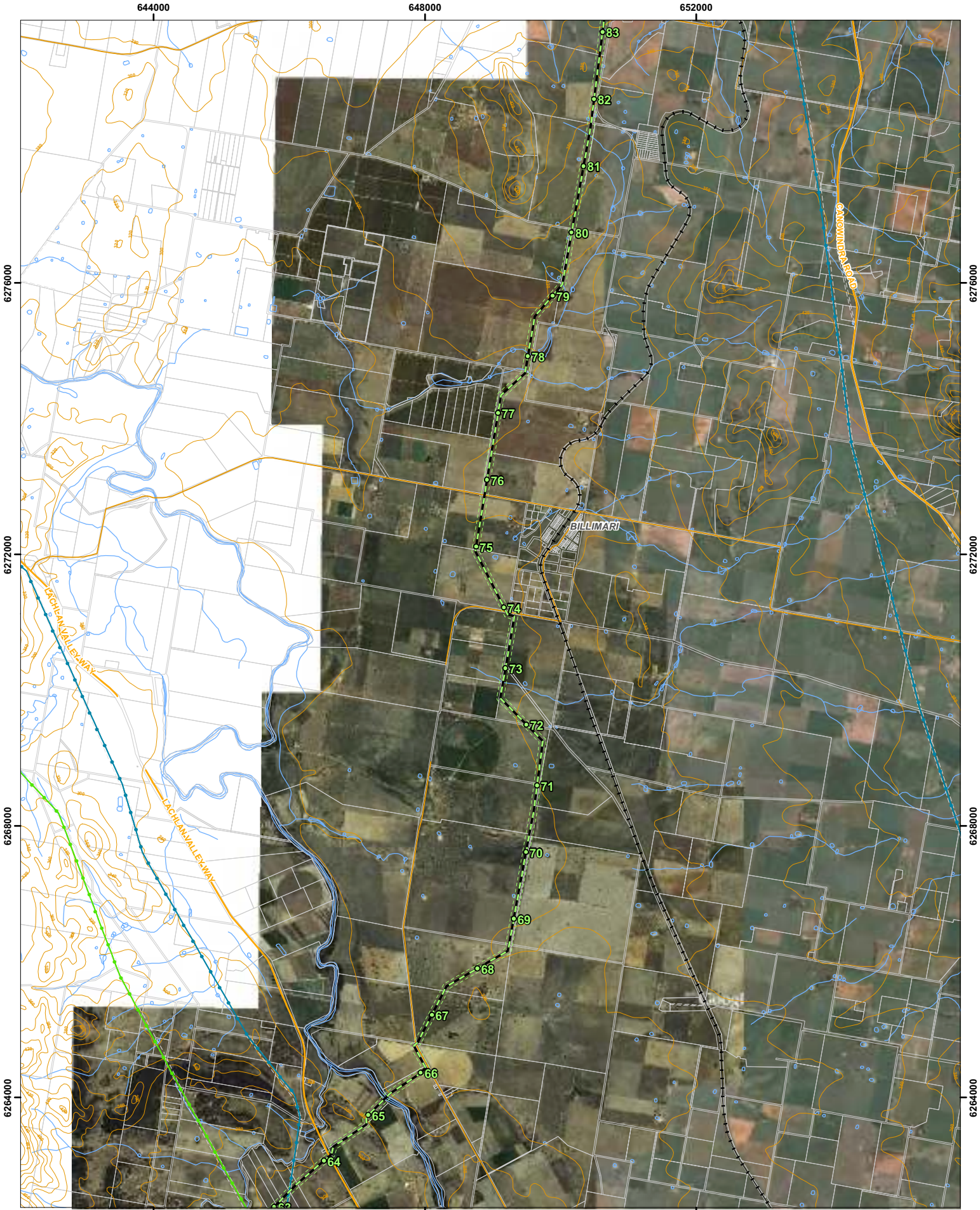
This plan was prepared for the purpose and exclusive use of ERM POWER and is not to be used for any other purpose. This plan is conceptual, and is not a detail design.  
This map is not guaranteed to be free from error or omission. LandPartners Limited disclaim liability for any act done or omission made on the basis of the information in this map, and any consequences of such acts or omissions.



Scale: 1:50,000 @ A3      Coordinate System: MGA94 GDA Zone 55

		<small>Client: ERM Power Drawn by: AV Approved by: RK Date: 16-10-2009 Plan: BRK4317-02-031a</small>
--	--	--

<small>Level 3, 99 Melbourne Street South Brisbane QLD 4101 PO Box 3916 South Brisbane QLD 4101</small>	<small>T: 61 7 3842 1000 F: 61 7 3842 1001 E: brisbane@landpartners.com.au W: www.landpartners.com.au</small>
---	---



**Proposed Route**  
**ERM Power Young to Wellington Gas Pipeline**

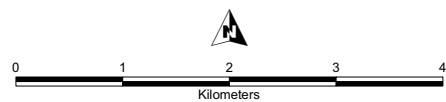
Cadastre: Department of Lands 2006 - 2008  
 Imagery: ICNHS 2002-2007, Google (2008), ALOS (2006-2007)  
 Aboriginal Sites: AAMS 2009  
 Waterways: Department of Lands 2006 - 2008

Contours: Department of Lands 2006 - 2008  
 State Forests: Department of Primary Industries 2008  
 Aerials: Department of Lands 2006 - 2008  
 Powerlines: Department of Lands 2006 - 2008  
 Roads: Department of Lands 2006 - 2008  
 Railways: Department of Lands 2006 - 2008

This plan was prepared for the purpose and exclusive use of ERM POWER and is not to be used for any other purpose. This plan is conceptual, and is not a detail design.

This map is not guaranteed to be free from error or omission. LandPartners Limited disclaim liability for any act done or omission made on the basis of the information in this map, and any consequences of such acts or omissions.

# SATELLITE IMAGE



Scale: 1:50,000 @ A3 Coordinate System: MGA94 GDA Zone 55

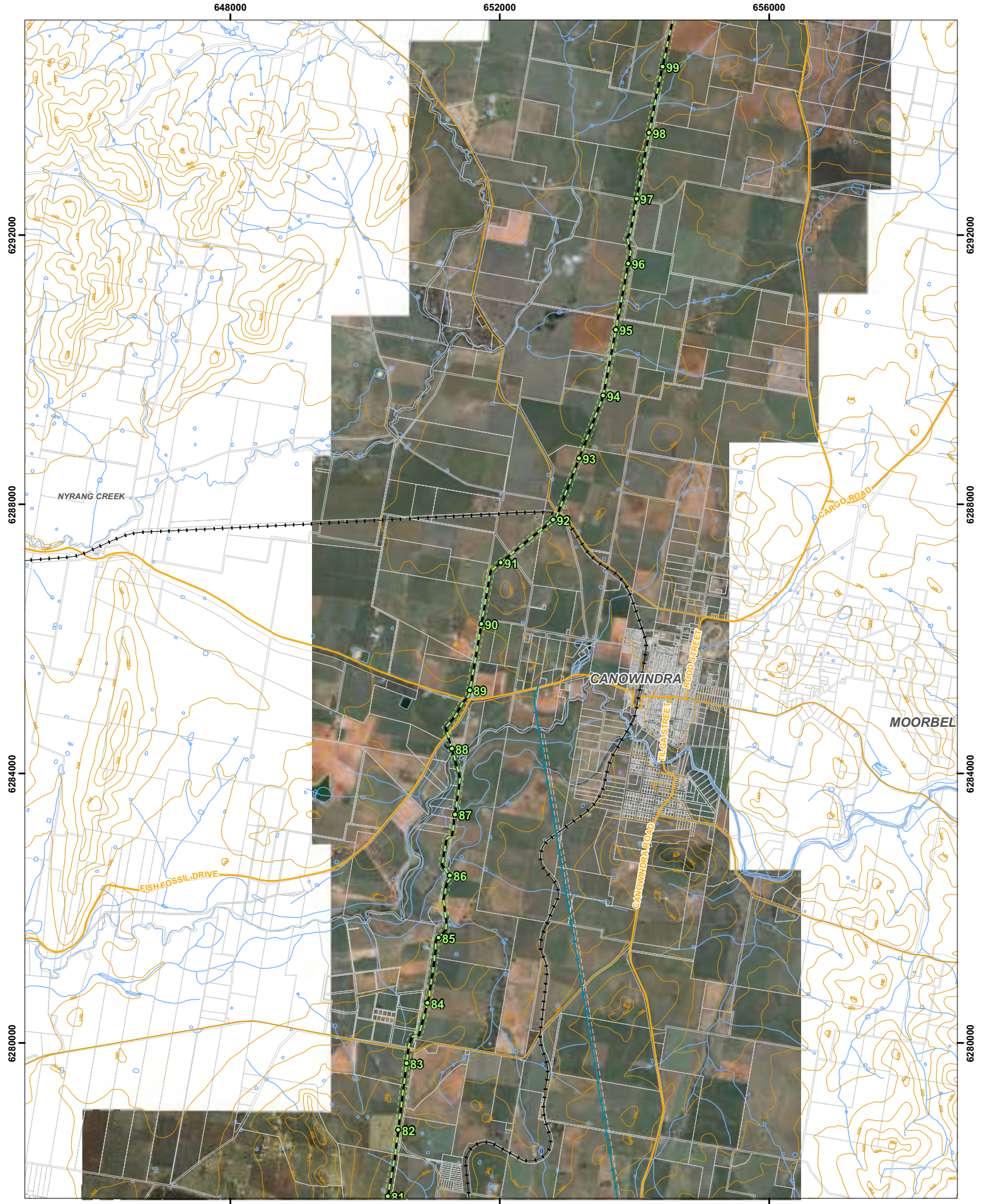


Level 3, 99 Melbourne Street  
 South Brisbane QLD 4101  
 PO Box 3916 South Brisbane QLD 4101



Client: ERM Power  
 Drawn by: AV  
 Approved by: RK  
 Date: 16-10-2009  
 Plan: BRK4317-02-031a

T: 61 7 3842 1000  
 F: 61 7 3842 1001  
 E: brisbane@landpartners.com.au  
 W: www.landpartners.com.au



- |   |              |            |       |          |           |                   |                         |
|---|--------------|------------|-------|----------|-----------|-------------------|-------------------------|
| 100m Corridor                           | State Forest | Powerlines | 132kV | 22kV     | Airstrips | Easement          | Arterial Road           |
| Proposed Pipeline Route (Rev/5a Oct 09) | NPWS Estate  | 500kV      | 66kV  | Railways | Railways  | Sub-Arterial Road | Contours (10m interval) |
| 1km Marker                              |              | 330kV      | 33kV  |          |           |                   |                         |

**Proposed Route**  
ERM Power Young to Wellington Gas Pipeline

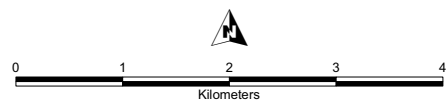
**SATELLITE IMAGE**

**Sheet 6 of 13**

Cadastre: Department of Lands 2006-2008  
 Imagery: ICNRS 2002-2007, Google (2008), ALOS (2006-2007)  
 Aboriginal Sites: AHMS 2009  
 Waterways: Department of Lands 2006-2008

Contours: Department of Lands 2006-2008  
 State Forests: Department of Primary Industries 2008  
 Aerials: Department of Lands 2006-2008  
 Powerlines: Department of Lands 2006-2008  
 Roads: Department of Lands 2006-2008  
 Railways: Department of Lands 2006-2008

This plan was prepared for the purpose and exclusive use of ERM POWER and is not to be used for any other purpose. This plan is conceptual, and is not a detail design.  
 This map is not guaranteed to be free from error or omission. LandPartners Limited disclaim liability for any act done or omission made on the basis of the information in this map, and any consequences of such acts or omissions.



Scale: 1:50,000 @ A3

Coordinate System: MGA94 GDA Zone 55

		Client: ERM Power Drawn by: AV Approved by: RK Date: 16-10-2009 Plan: BRW4317-02-031a
--	--	---

Level 3, 99 Melbourne Street  
 South Brisbane QLD 4101  
 PO Box 3916 South Brisbane QLD 4101

T: 61 7 3842 1000  
 F: 61 7 3842 1001  
 E: brisbane@landpartners.com.au  
 W: www.landpartners.com.au