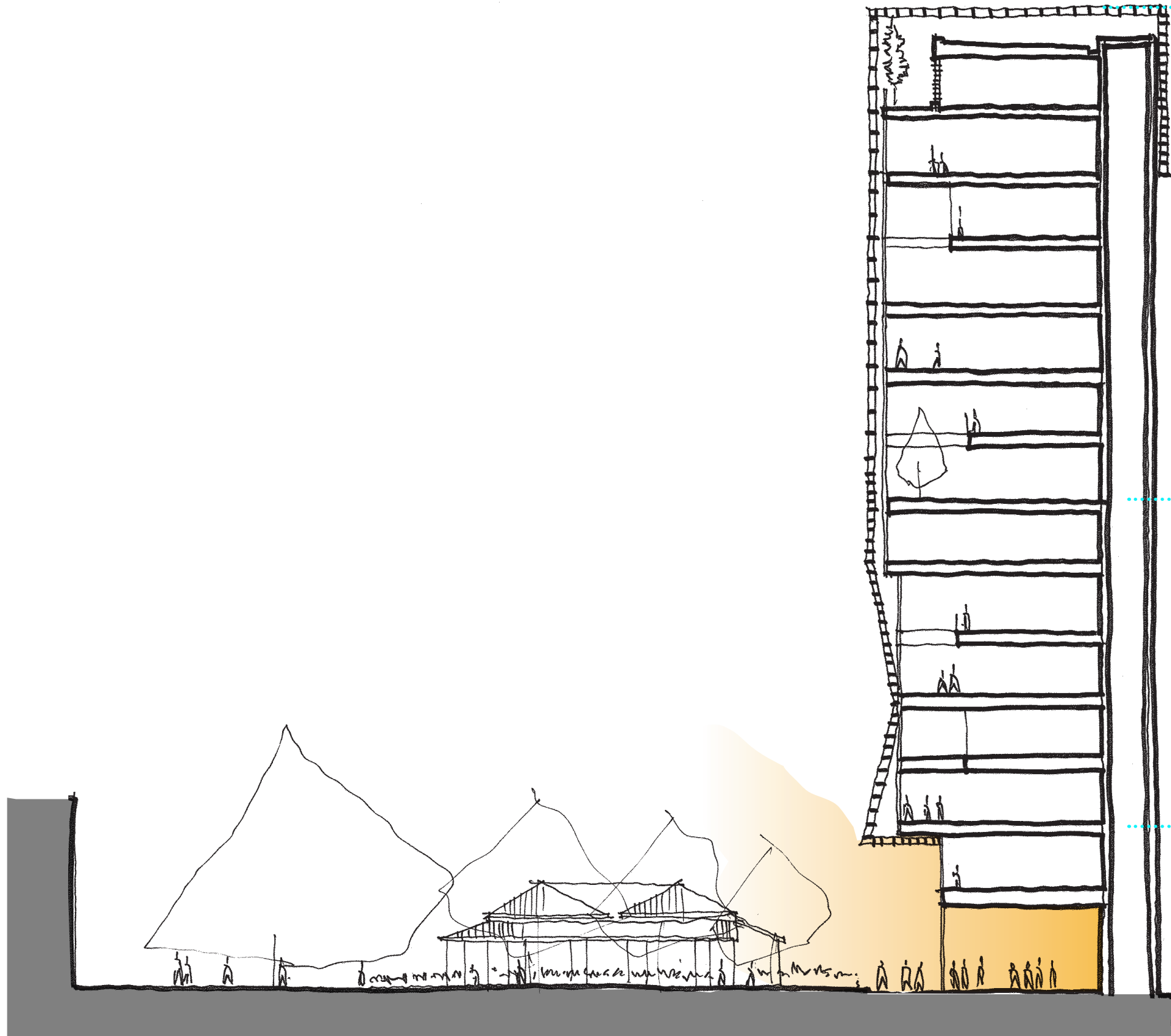


CONTEXT MATERIALITY



- LIGHT
- TRANSPARENT
- HIGH VISIBILITY
- ROOF GARDEN
- VARYING WEAVE PATTERN

- LIGHT
- TRANSPARENT
- SELECTIVE VISIBILITY
- WINTER GARDENS
- REGULAR WEAVE PATTERN

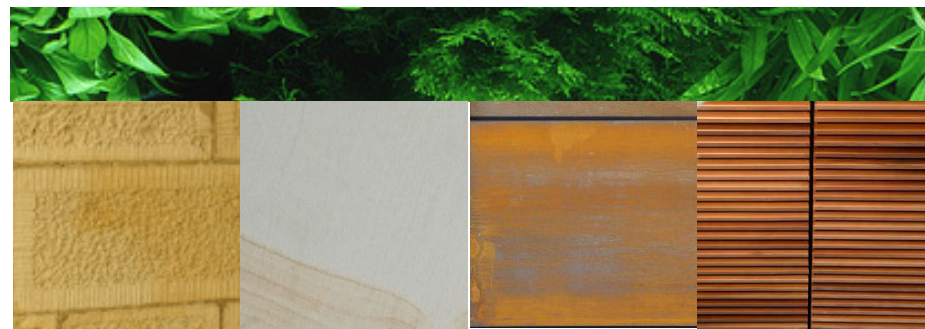
- NATURAL
- WARM
- TACTILE
- ROBUST

Context:
CITY

Context:
BACKDROP

Context:
PERTH HOUSE



rough cut
sandstone
feature inlaysmooth cut
sandstoneweathered
steel

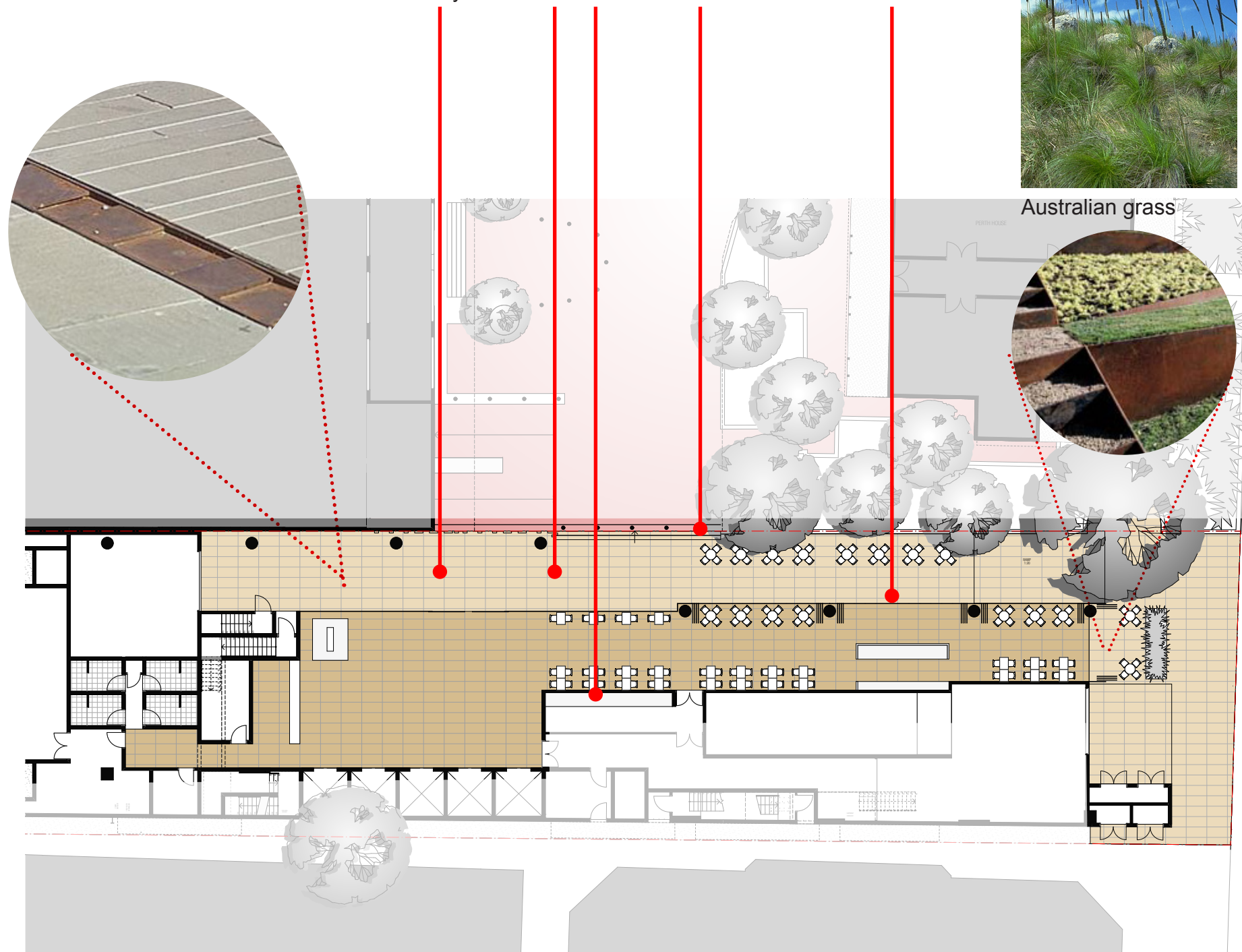
stained timber



Pennisetum



Australian grass



CONTEXT MATERIALITY & LANDSCAPE

CONTEXT: PERTH HOUSE

The proposed material and landscape qualities at Ground Level strives to create a seamless visual integration with the newly created square around Perth House responding with natural, warm and tactile materials.

The rich palette includes rough sawn sandstone, smooth paved sandstone, weathered steel and stained timber. These materials are proposed for both the interior lobby space and the exterior landscape including the colonadde.

The sophisticated palette of high quality finishes are robust responding to the public nature of the space and to exhibit a sense of decorum towards the public realm.

The ground floor contains a small parcel of soft landscaping to the north boundary. It is envisaged that the planting in this location will accentuate the entry point and consist of feature low shrubs to a height of maximum 800mm and soil depth of 600mm to 800mm. Although currently undetermined an indicative species could be a Pennisetum or a native Australian grass species.

CONTEXT MATERIALITY

CONTEXT: BACKDROP

The proposed finishes for CONTEXT: BACKDROP include powdercoated aluminium louvres, painted steel framing and transparent glazing.

The “veil” screen element evolves from the warm tactile timber used in the lower levels to a white aluminium powdercoat louvre providing adequate reflection of light into the office space and also providing a consistency in spacing and finish to ensure the backdrop to Perth House and the courtyard is effective.

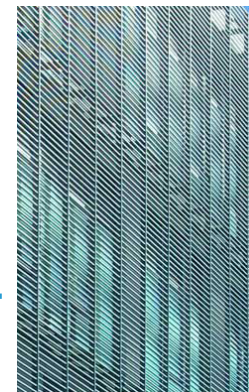
CONTEXT: CITY

The proposed finishes for CONTEXT: CITY include powdercoated aluminium louvres, painted steel framing, transparent glazing and a rooftop garden.

The “veil” screen element are placed at a wider spacing promoting a visual lightness to the building. This is further enhanced with each of the “veils” finishing at altering heights and revealing a highly visible rooftop garden



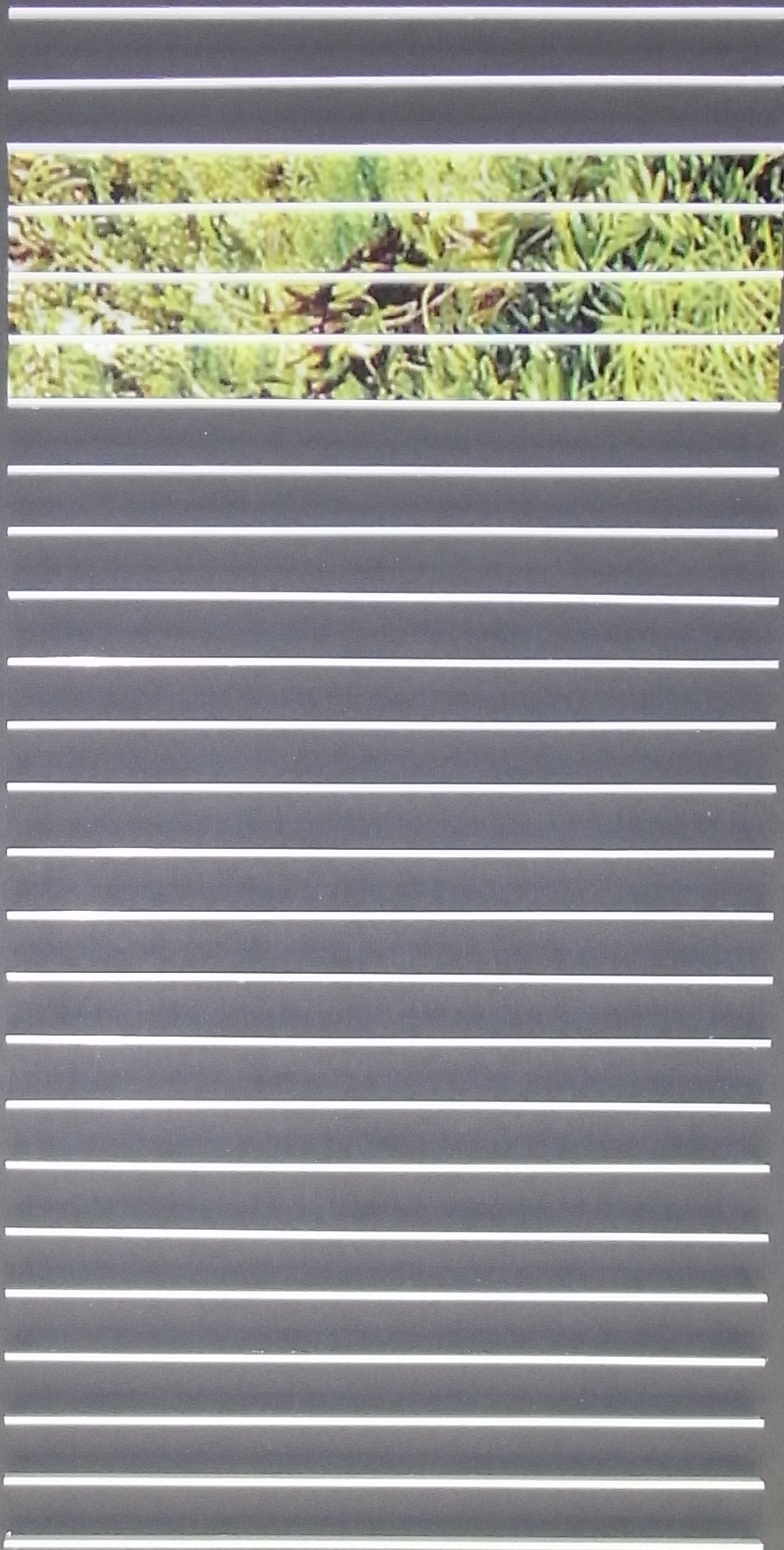
white
powdercoat



white
powdercoat



highly
transparent
glazing



KEY

- 1. WHITE POWDERCOAT
- 2. WHITE COLOURBACK GLASS
- 3. CORTEN STEEL
- 4. BLACKBUTT TIMBER
- 5. SANDSTONE - SMOOTH
- 6. SANDSTONE - ROUGH

WOODS
BAGOT

89 GEORGE ST
PARRMATT