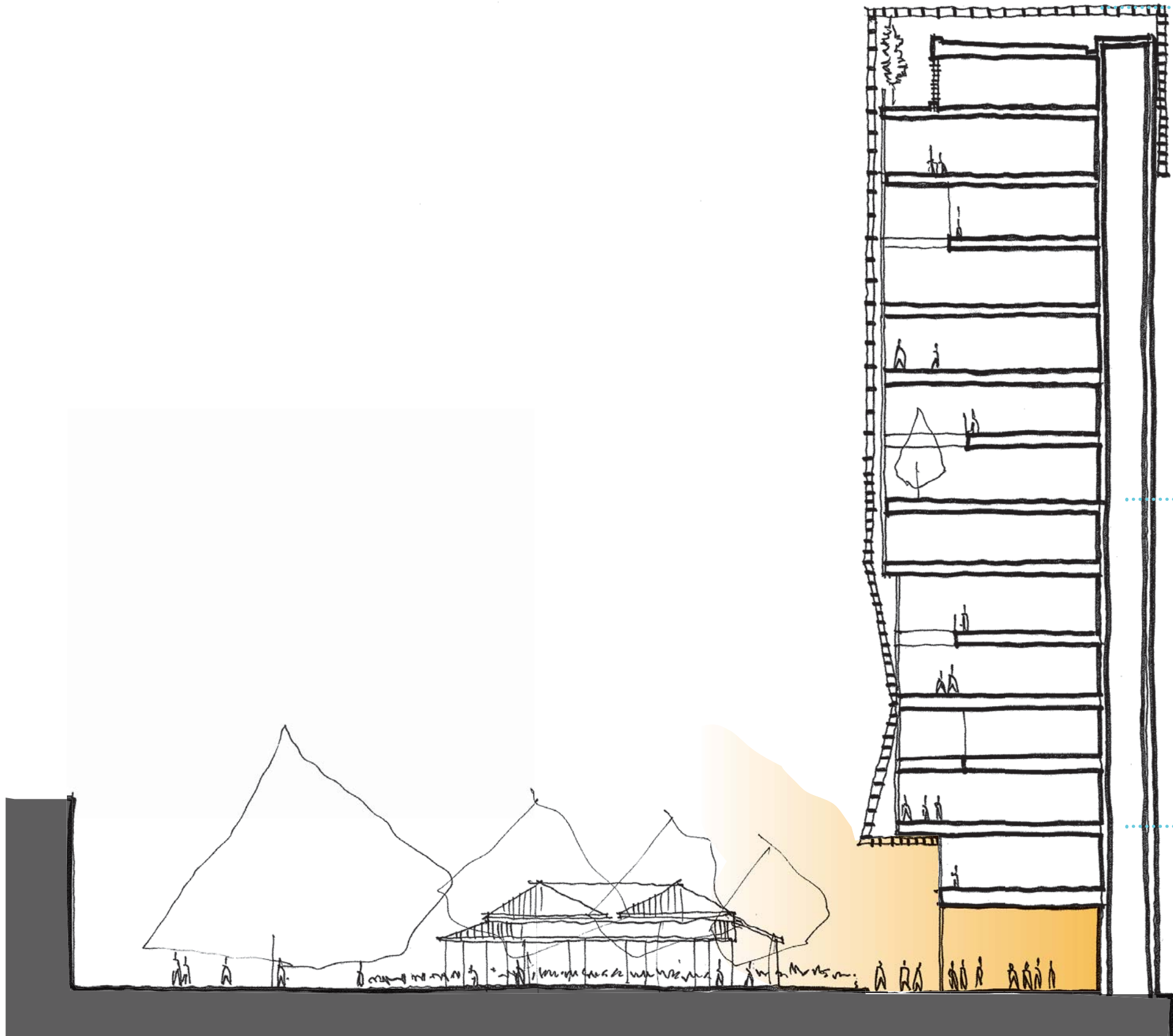


CONTEXT MATERIALITY



- LIGHT
- TRANSPARENT
- HIGH VISIBILITY
- ROOF GARDEN
- VARYING WEAVE PATTERN

- LIGHT
- TRANSPARENT
- SELECTIVE VISIBILITY
- WINTER GARDENS
- REGULAR WEAVE PATTERN

- NATURAL
- WARM
- TACTILE
- ROBUST



Context:
CITY

Context:
BACKDROP

Context:
PERTH HOUSE



rough cut sandstone feature inlay

smooth cut sandstone

weathered steel

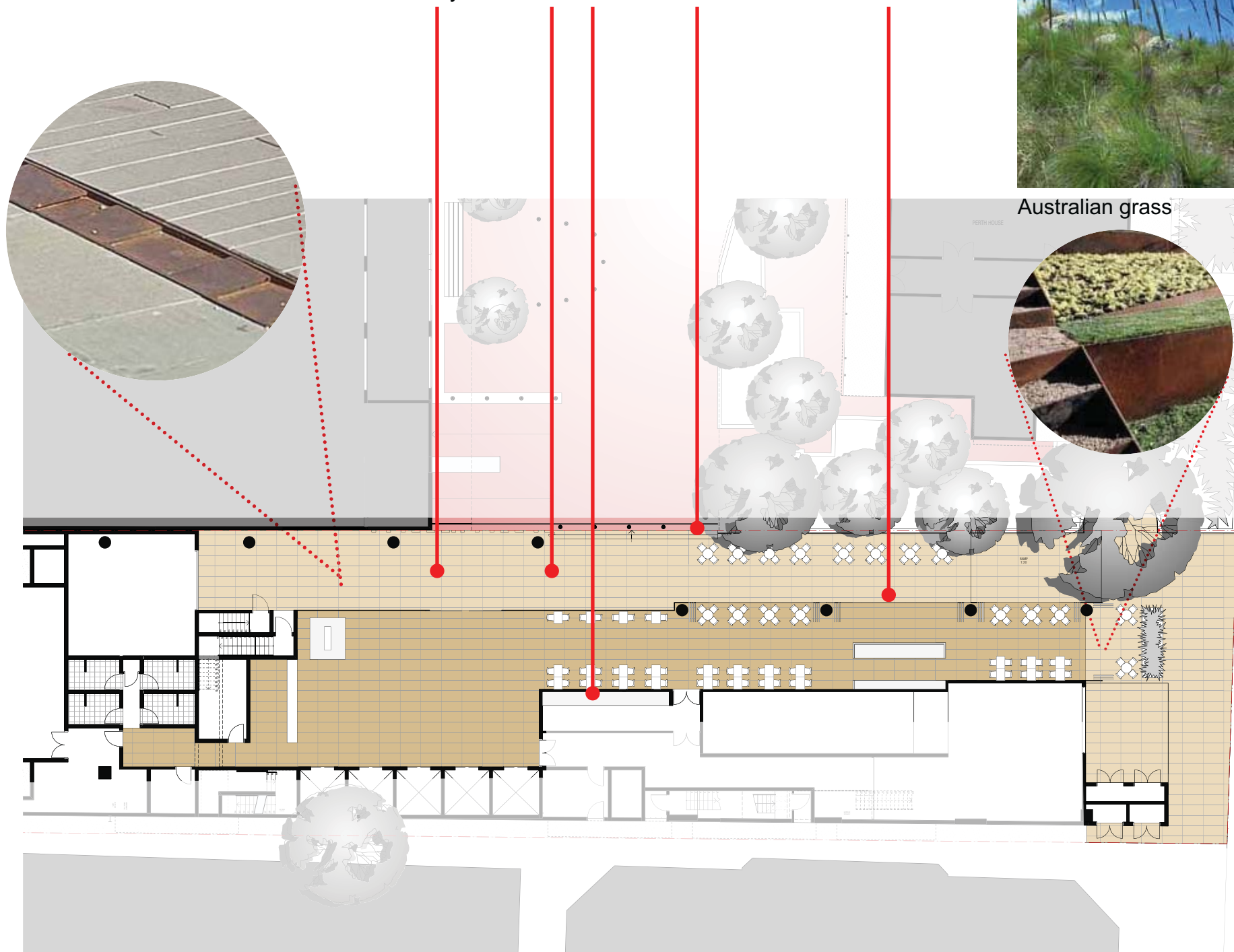
stained timber



Pennisetum



Australian grass



CONTEXT MATERIALITY & LANDSCAPE

CONTEXT: PERTH HOUSE

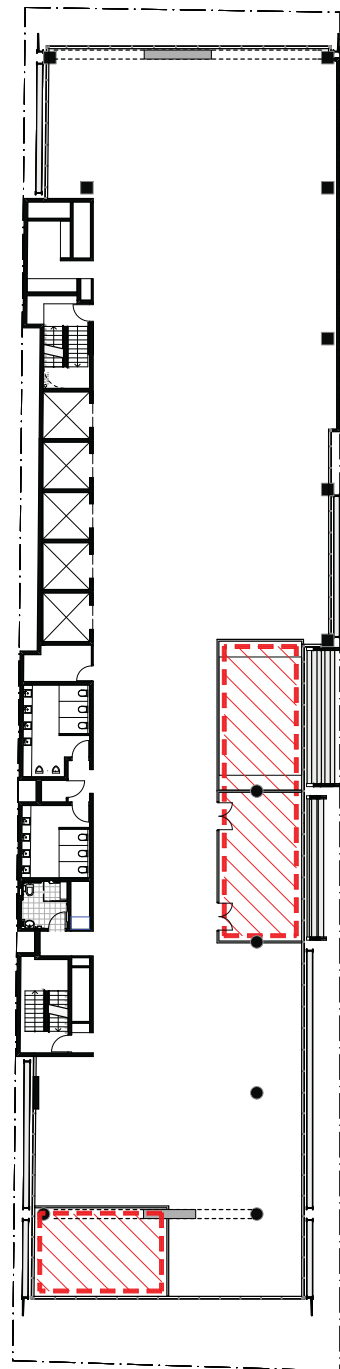
The proposed material and landscape qualities at Ground Level strives to create a seamless visual integration with the newly created square around Perth House responding with natural, warm and tactile materials.

The rich palette includes rough sawn sandstone, smooth paved sandstone, weathered steel and stained timber. These materials are proposed for both the interior lobby space and the exterior landscape including the colonadde.

The sophisticated palette of high quality finishes are robust responding to the public nature of the space and to exhibit a sense of decorum towards the public realm.

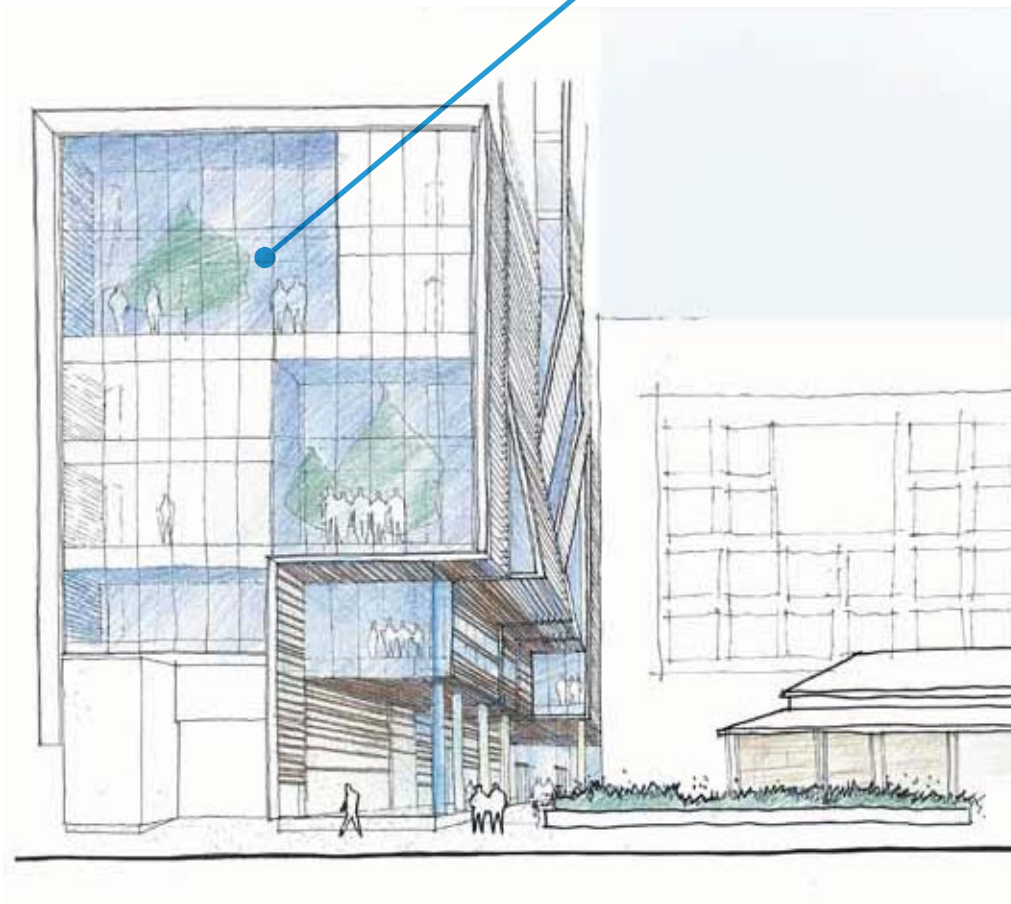
The ground floor contains a small parcel of soft landscaping to the north boundary. It is envisaged that the planting in this location will accentuate the entry point and consist of feature low shrubs to a height of maximum 800mm and soil depth of 600mm to 800mm. Although currently undetermined an indicative species could be a Pennisetum or a native Australian grass species.

CONTEXT LANDSCAPE



 **PLANTING ZONE**

Typical Office Level



Atrium Planting



Frangipani



Cycas

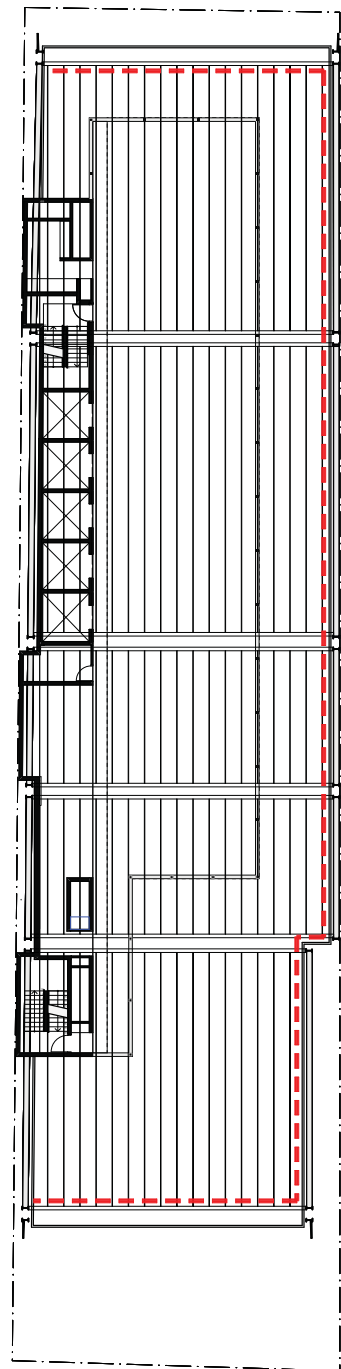


Bamboo

CONTEXT: BACKDROP

The upper level office areas have voids and two storey atrium spaces to provide daylight and break out spaces for the people occupying the building. It is envisaged that the trees will be planted in large pots and will be connected to an irrigation system. The pots will be sized accordingly to suit the species selected. Although the current species have not been determined indicative species could be frangipani, bamboo, cycas and/or ruffled latan palms.

CONTEXT LANDSCAPE



--- PLANTING ZONE

Roof Level



Roof Planting



CONTEXT: CITY

It is also proposed to provide a visual planted area on the roof of 89 George Street to highlight the roof feature area. The proposed “green wall” will consist of a variety of plants suitable for the application and will be connected to an irrigation system. Although the species are yet to be determined a range of Sedum plants in a variety of sizes and textures are proposed.