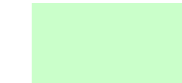


FACTS & FIGURES

SITE AREA	1354 sq. meters		
Site Dimensions	18.255m wide x Approximately 75.44 (REFER TO SURVEY)		
GFA Proposed	11567 sq. meters		
FSR Proposed	8.5:1		
Floor	RL	GFA (sq.m)	Use
Basement 4	-4.6	-	20 Car Parking , Plant Rooms
Basement 3	-1.6	-	20 Car Parking , Plant Rooms
Basement 2	1.4	-	18 Car Parking , 10 Motor Bikes, Plant Rooms
Basement 1	4.4	-	5 Car Parking , Bike Lockers, Waste Collection Room, Plant Room
Ground	7.5	399	Cafeteria, Lobby, Colonnade, Amenities, Carpark Entry, Loading Dock, Plant Rooms
Level 1	13.5	918	Commercial Floor
Level 2	17.25	968	Commercial Floor
Level 3	21.0	892	Commercial Floor
Level 4	24.75	928	Commercial Floor
Level 5	28.5	930	Commercial Floor
Level 6	32.25	926	Commercial Floor
Level 7	36.00	965	Commercial Floor
Level 8	39.75	913	Commercial Floor
Level 9	43.50	926	Commercial Floor
Level 10	47.25	913	Commercial Floor
Level 11	51.00	926	Commercial Floor
Level 12	54.75	913	Commercial Floor
Plant Room	58.50	-	Plant Rooms
ROOF	65.00	-	Architectural Roof Feature

FACTS & FIGURES

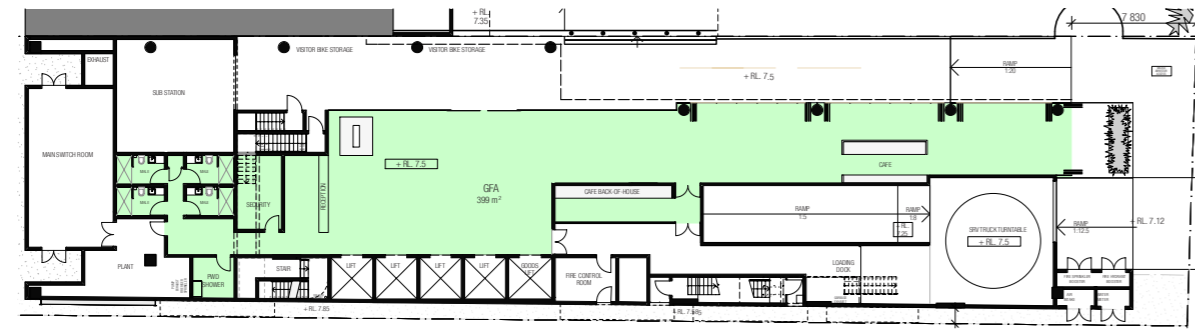
LEGEND:



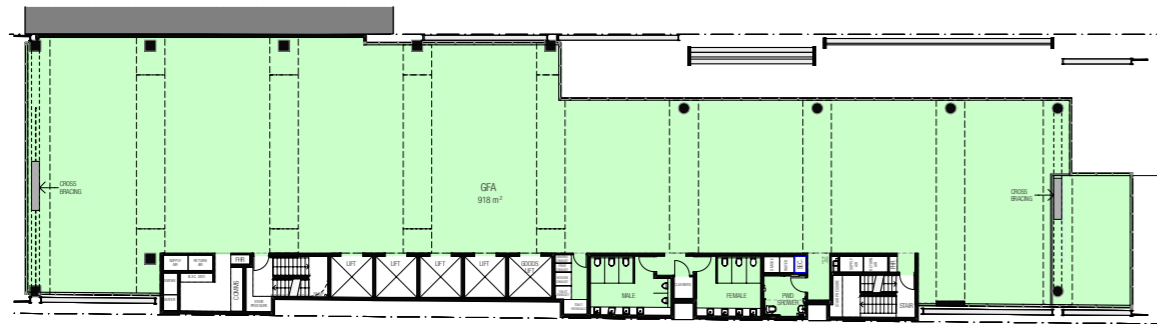
GROSS FLOOR AREA IS DEFINED AS THE SUM OF THE FLOOR AREA OF EACH STOREY MEASURED FROM THE INTERNAL FACE OF EXTERNAL WALLS, EXCLUDING:

- AREAS FOR VERTICAL CIRCULATION, SUCH AS LIFTS AND STAIRS
- BASEMENTS
- STORAGE
- CARPARKING AND VEHICULAR ACCESS, LOADING AREAS AND ACCESS TO THEM, GARBAGE AND SERVICES
- PLANT ROOMS, LIFT TOWERS AND OTHER AREAS USED EXCLUSIVELY FOR MECHANICAL SERVICES AND DUCTING
- VOIDS ABOVE A FLOOR AT THE LEVEL OF A STOREY OR A STOREY ABOVE

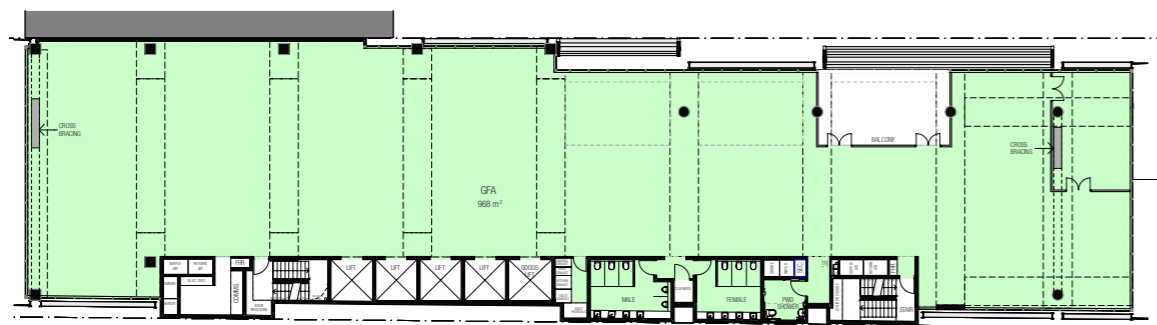
GFA: 11567 m²
FSR: 8.5 : 1



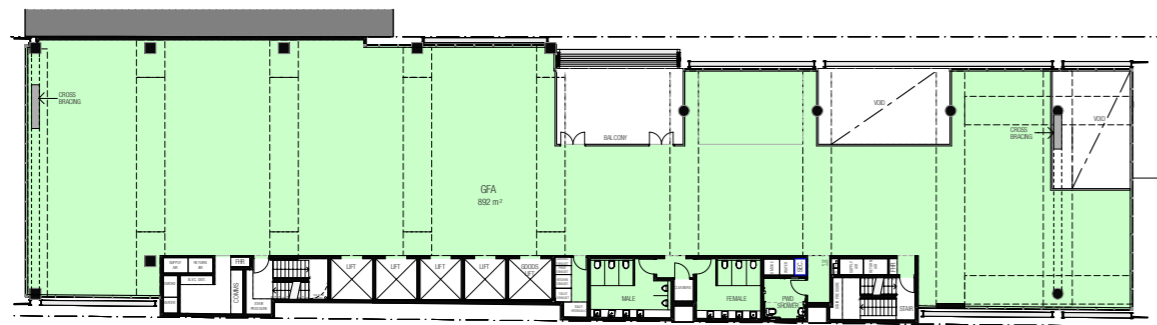
01 PLAN - GROUND GFA
SCALE 1:200



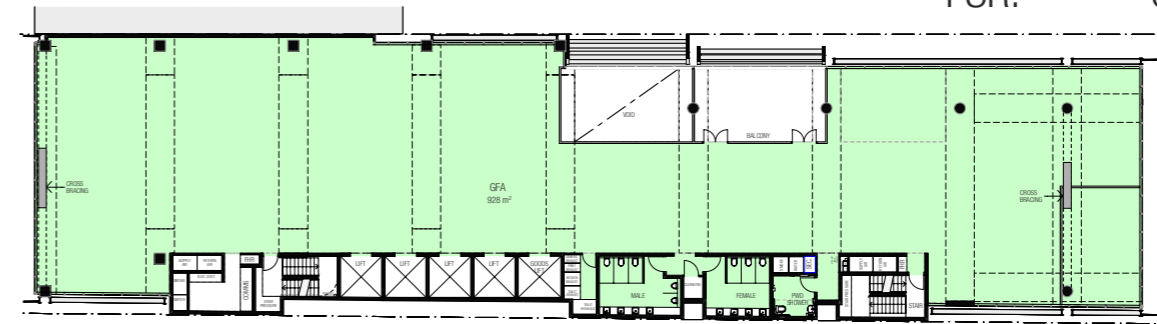
02 PLAN - LEVEL 01 GFA
SCALE 1:200



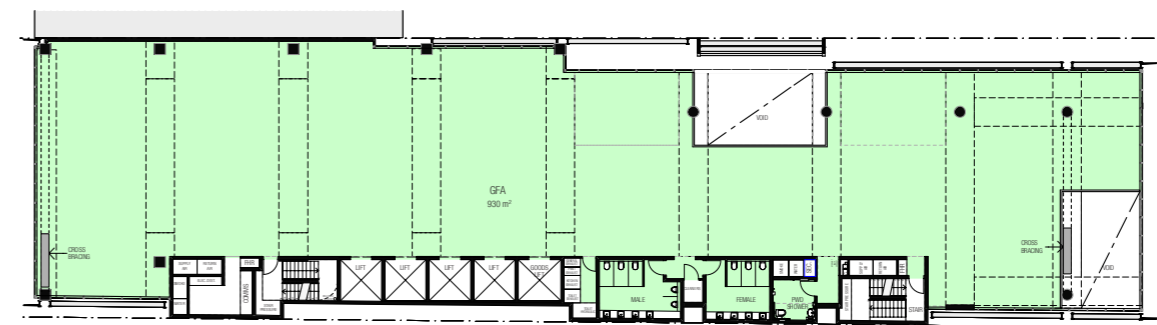
03 PLAN - LEVEL 02 GFA
SCALE 1:200



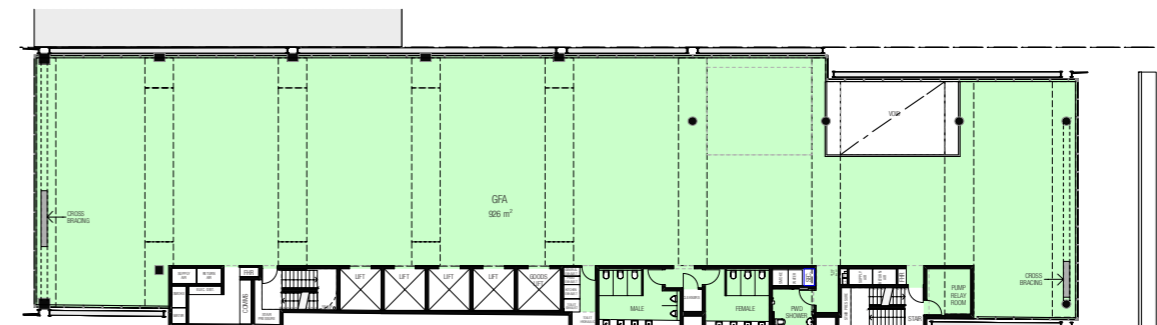
04 PLAN - LEVEL 03 GFA
SCALE 1:200



05 PLAN - LEVEL 04 GFA
SCALE 1:200



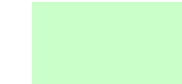
06 PLAN - LEVEL 05 GFA
SCALE 1:200



07 PLAN - LEVEL 06
SCALE 1:200

FACTS & FIGURES

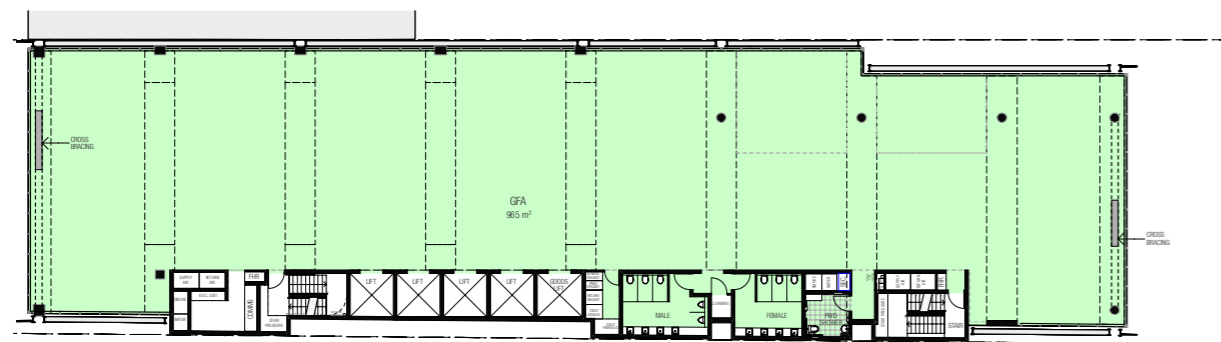
LEGEND:



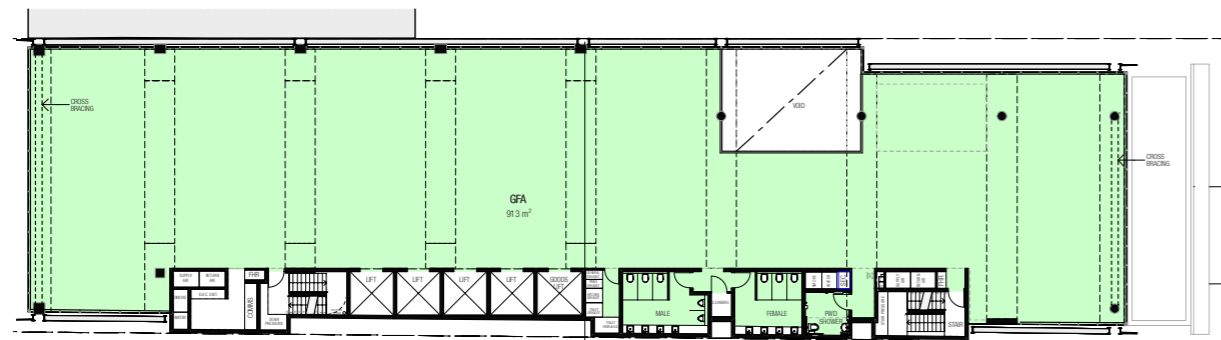
GROSS FLOOR AREA IS DEFINED AS THE SUM OF THE FLOOR AREA OF EACH STOREY MEASURED FROM THE INTERNAL FACE OF EXTERNAL WALLS, EXCLUDING:

- AREAS FOR VERTICAL CIRCULATION, SUCH AS LIFTS AND STAIRS
- BASEMENTS
- STORAGE
- CARPARKING AND VEHICULAR ACCESS, LOADING AREAS AND ACCESS TO THEM, GARBAGE AND SERVICES
- PLANT ROOMS, LIFT TOWERS AND OTHER AREAS USED EXCLUSIVELY FOR MECHANICAL SERVICES AND DUCTING
- VOIDS ABOVE A FLOOR AT THE LEVEL OF A STOREY OR A STOREY ABOVE

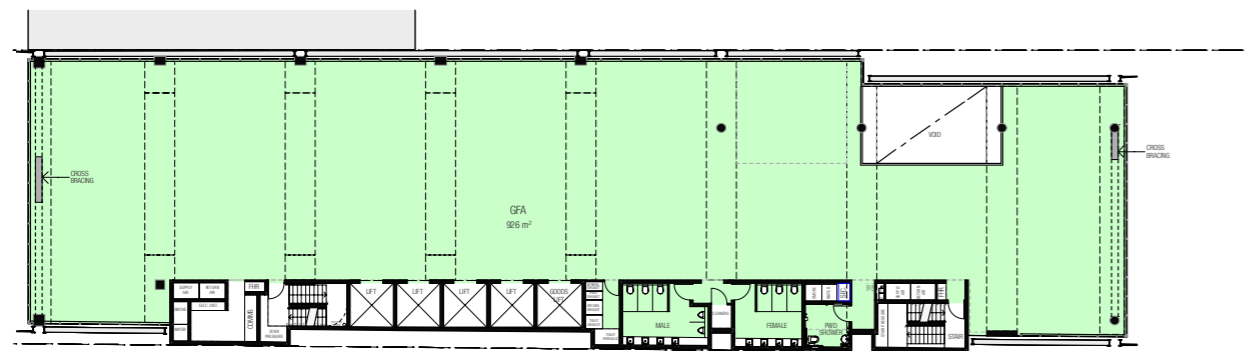
GFA: 11567 m²
FSR: 8.5 : 1



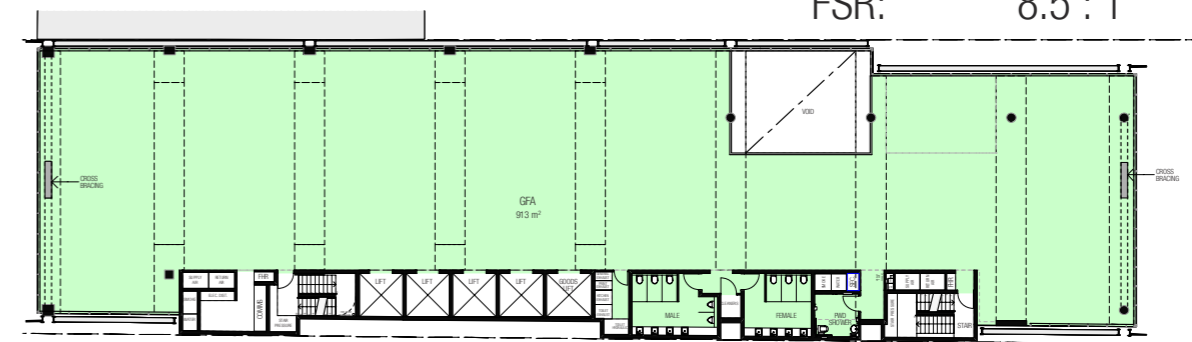
01 PLAN - LEVEL 07
SCALE 1:200



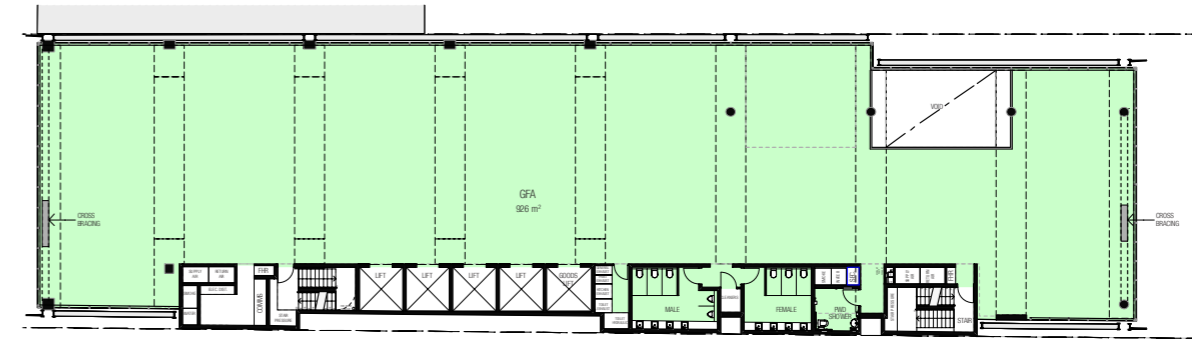
02 PLAN - LEVEL 08
SCALE 1:200



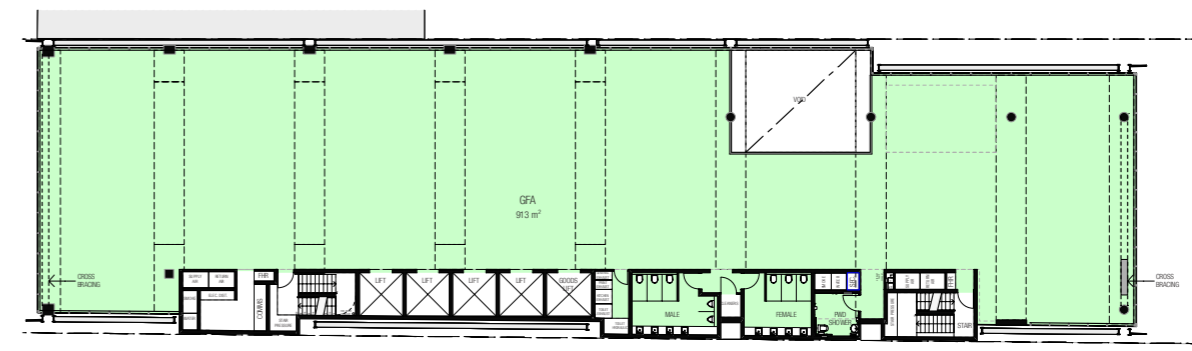
03 PLAN - LEVEL 09
SCALE 1:200



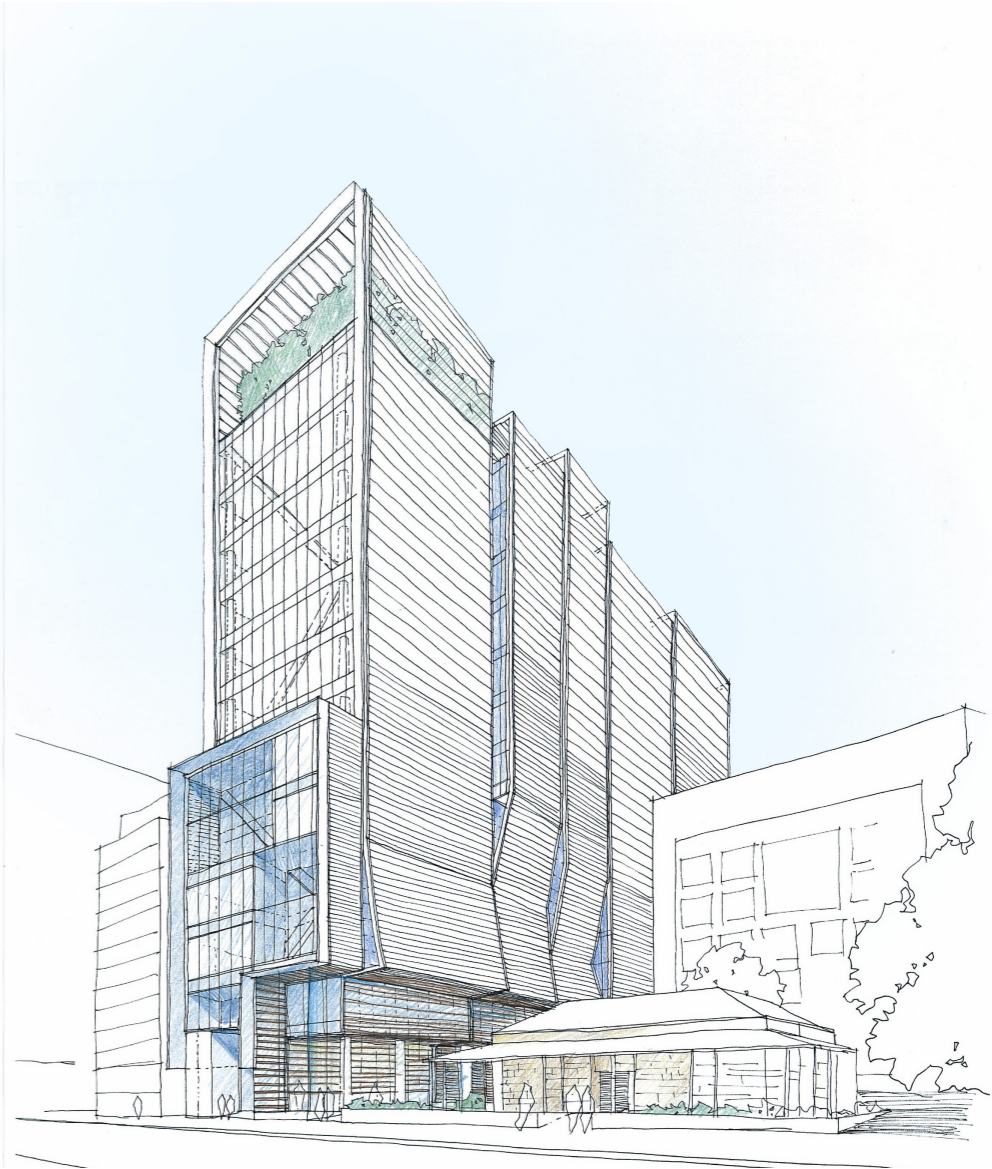
04 PLAN - LEVEL 10 GFA
SCALE 1:200



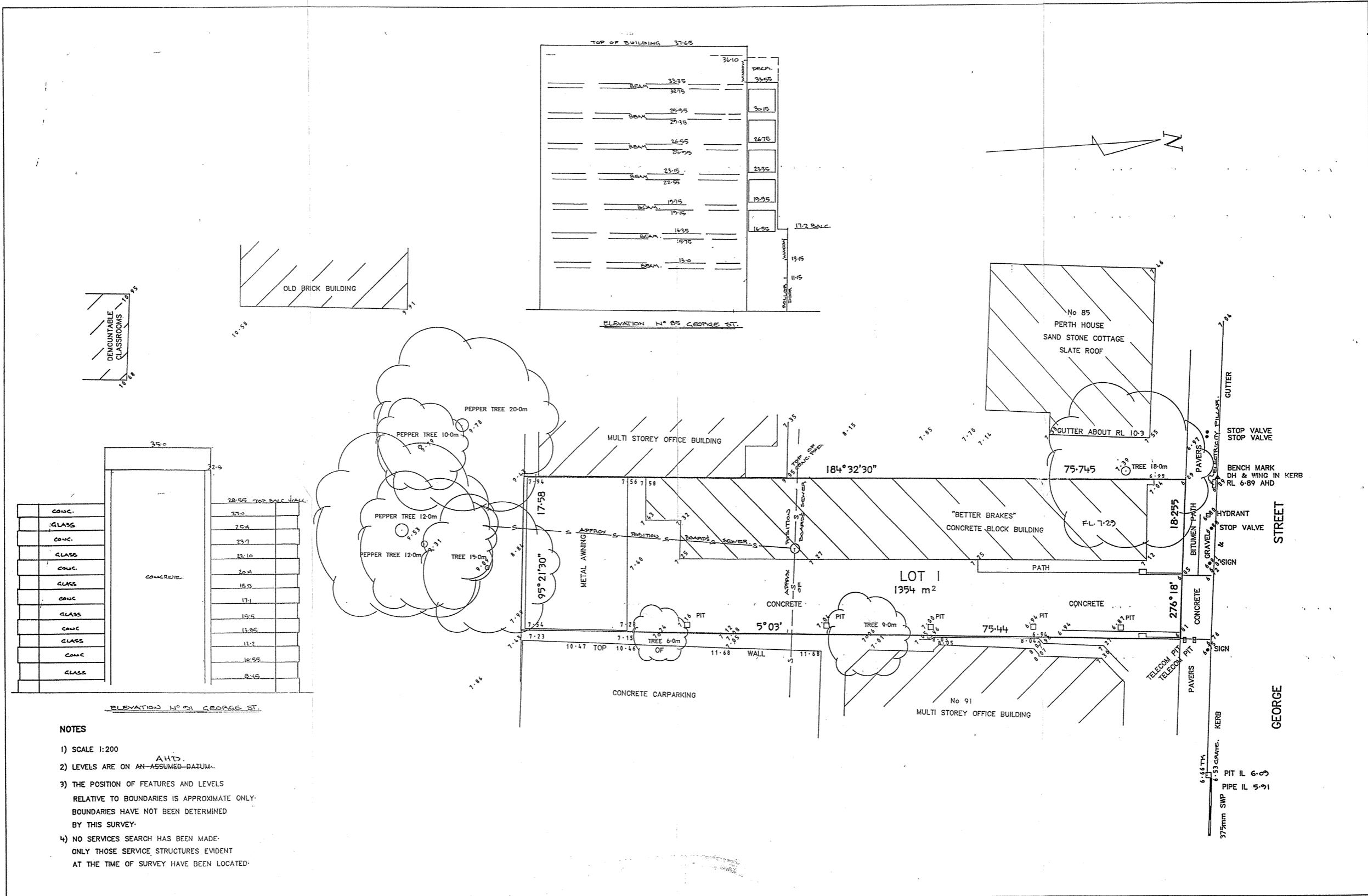
05 PLAN - LEVEL 11 GFA
SCALE 1:200



06 PLAN - LEVEL 12 GFA
SCALE 1:200



SITE SURVEY



PLAN OF DETAIL SURVEY
 LOT 1 IN D.P. 505486
 89 GEORGE STREET, PARRAMATTA

G.J. ATKINS & ASSOCIATES
 CONSULTING SURVEYORS
 2/29 WINDSOR RD, KELLYVILLE 629 3001

REF: 9520/16
 7/11/1995
 SMITH/044/4C