

Figure 3.3b: Number of 24 hour maximum averages exceeding 8pphm for full load conditions with proposed coal sulfur content of 0.75%

3.3 Hourly Averages

3.3.1 First highest hourly average

Table 3.4: Domain wide statistics for the first highest values for the Central Coast region

2001	Ave	Stdev	Max	Min
PROPOSED 0.7%	16.92	7.85	45.50	5.74
PROPOSED 0.75%	17.63	8.14	46.93	5.85
CURRENT	17.20	7.64	43.50	5.66
2002	Ave	Stdev	Max	Min
PROPOSED 0.7%	16.12	8.34	45.27	3.06
PROPOSED 0.75%	16.86	8.62	46.94	3.10
CURRENT	17.91	9.46	46.79	3.48
2003	Ave	Stdev	Max	Min
PROPOSED 0.7%	16.17	6.43	40.57	5.66
PROPOSED 0.75%	16.78	6.56	43.47	5.75
CURRENT	16.56	6.15	43.92	5.72
2004	Ave	Stdev	Max	Min
PROPOSED 0.7%	17.43	7.21	44.99	3.52
PROPOSED 0.75%	18.09	7.37	45.04	3.71
CURRENT	17.02	6.97	45.07	4.63
2005	Ave	Stdev	Max	Min
PROPOSED 0.7%	15.53	7.44	45.19	3.73
PROPOSED 0.75%	16.13	7.71	46.12	3.94
CURRENT	16.01	7.50	45.51	3.90
2006	Ave	Stdev	Max	Min
PROPOSED 0.7%	15.81	6.82	48.62	3.96
PROPOSED 0.75%	16.49	6.99	48.93	4.17
CURRENT	15.95	6.53	47.50	4.02

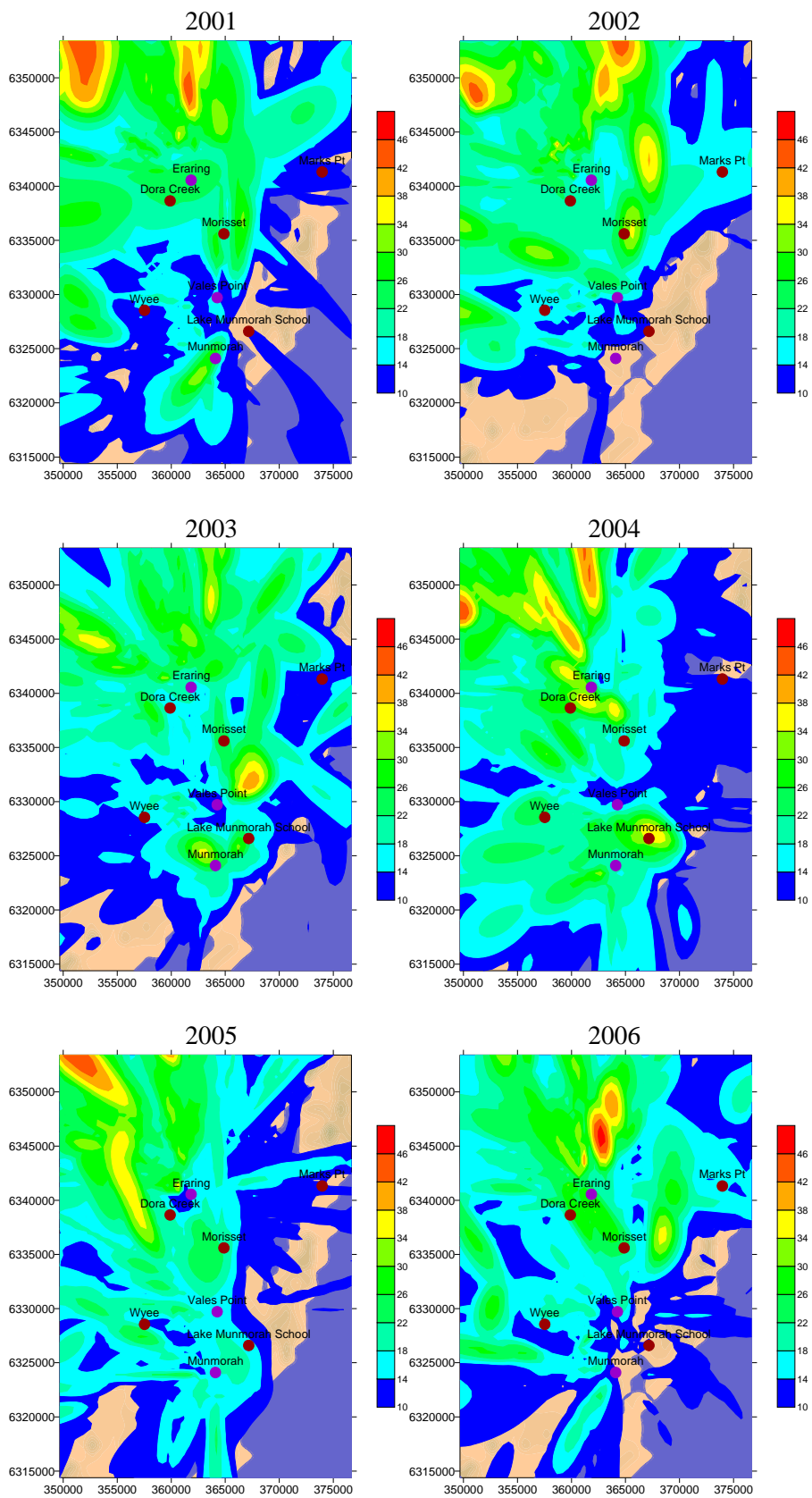


Figure 3.4a: Maximum concentrations (pphm) for full load conditions with proposed coal sulfur content of 0.7%

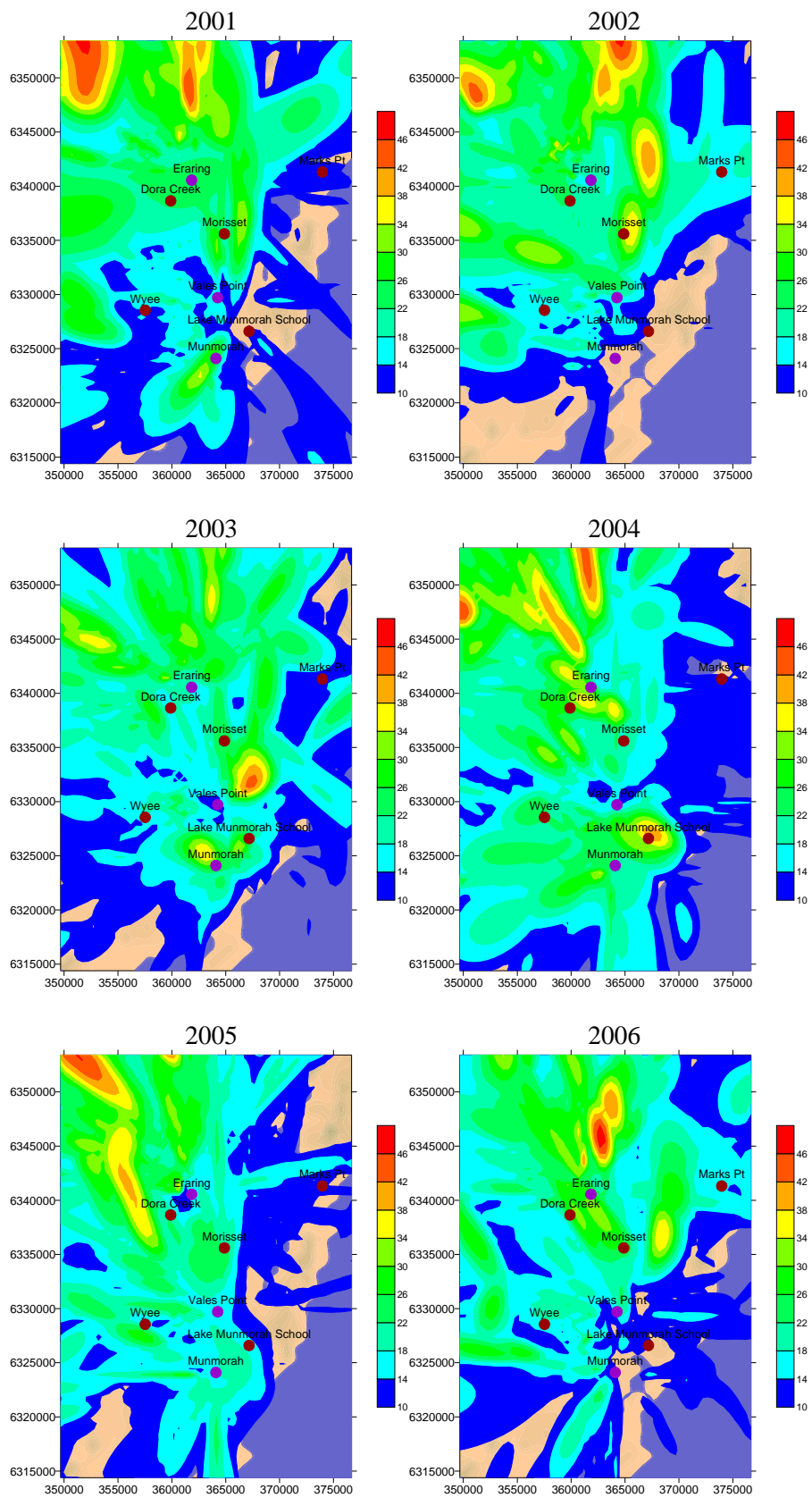


Figure 3.4b: Maximum concentrations (pphm) for full load conditions with proposed coal sulfur content of 0.75%

3.3.2 Ninth Highest Hourly Average concentrations

Table 3.5: Domain wide statistics for the ninth highest values for the Central Coast region

2001	Ave	Stdev	Max	Min
PROPOSED 0.7%	8.66	3.60	22.11	3.23
PROPOSED 0.75%	9.01	3.70	22.77	3.40
CURRENT	8.85	3.42	22.45	3.25
2002	Ave	Stdev	Max	Min
PROPOSED 0.7%	8.99	3.97	20.83	2.28
PROPOSED 0.75%	9.38	4.07	21.48	2.35
CURRENT	9.34	3.76	20.74	2.70
2003	Ave	Stdev	Max	Min
PROPOSED 0.7%	9.20	3.44	22.66	3.09
PROPOSED 0.75%	9.57	3.51	23.19	3.25
CURRENT	9.42	3.32	21.61	3.29
2004	Ave	Stdev	Max	Min
PROPOSED 0.7%	9.55	3.47	20.65	2.69
PROPOSED 0.75%	9.92	3.55	20.88	2.85
CURRENT	9.56	3.19	19.46	2.97
2005	Ave	Stdev	Max	Min
PROPOSED 0.7%	8.74	3.64	21.58	3.18
PROPOSED 0.75%	9.07	3.72	21.98	3.34
CURRENT	8.97	3.55	20.91	3.17
2006	Ave	Stdev	Max	Min
PROPOSED 0.7%	8.78	3.21	21.88	1.84
PROPOSED 0.75%	9.14	3.26	21.88	1.90
CURRENT	8.97	3.01	21.88	1.94

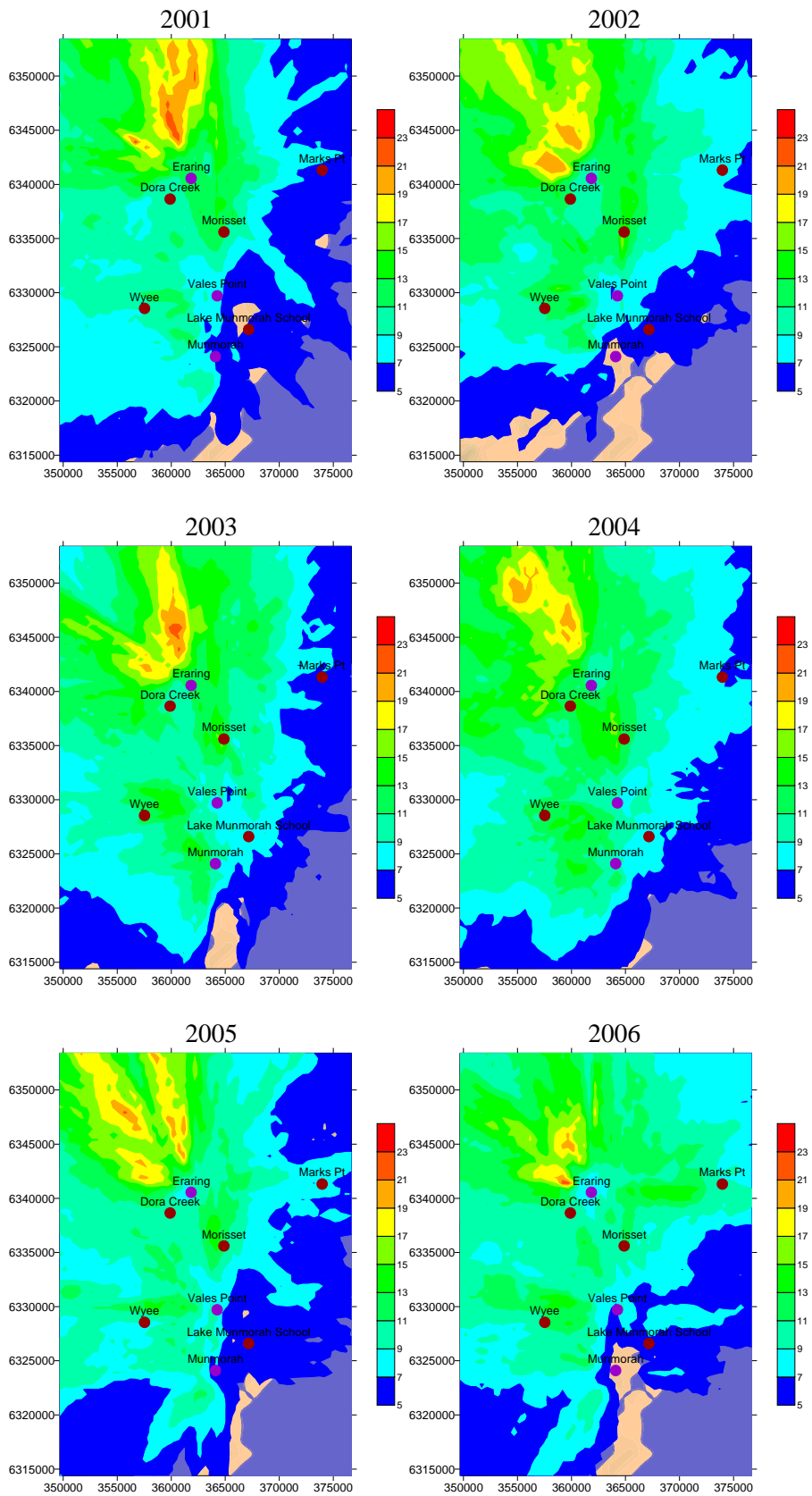


Figure 3.5a: Ninth highest hourly average concentration (pphm) for full load conditions with proposed coal sulfur content of 0.7%

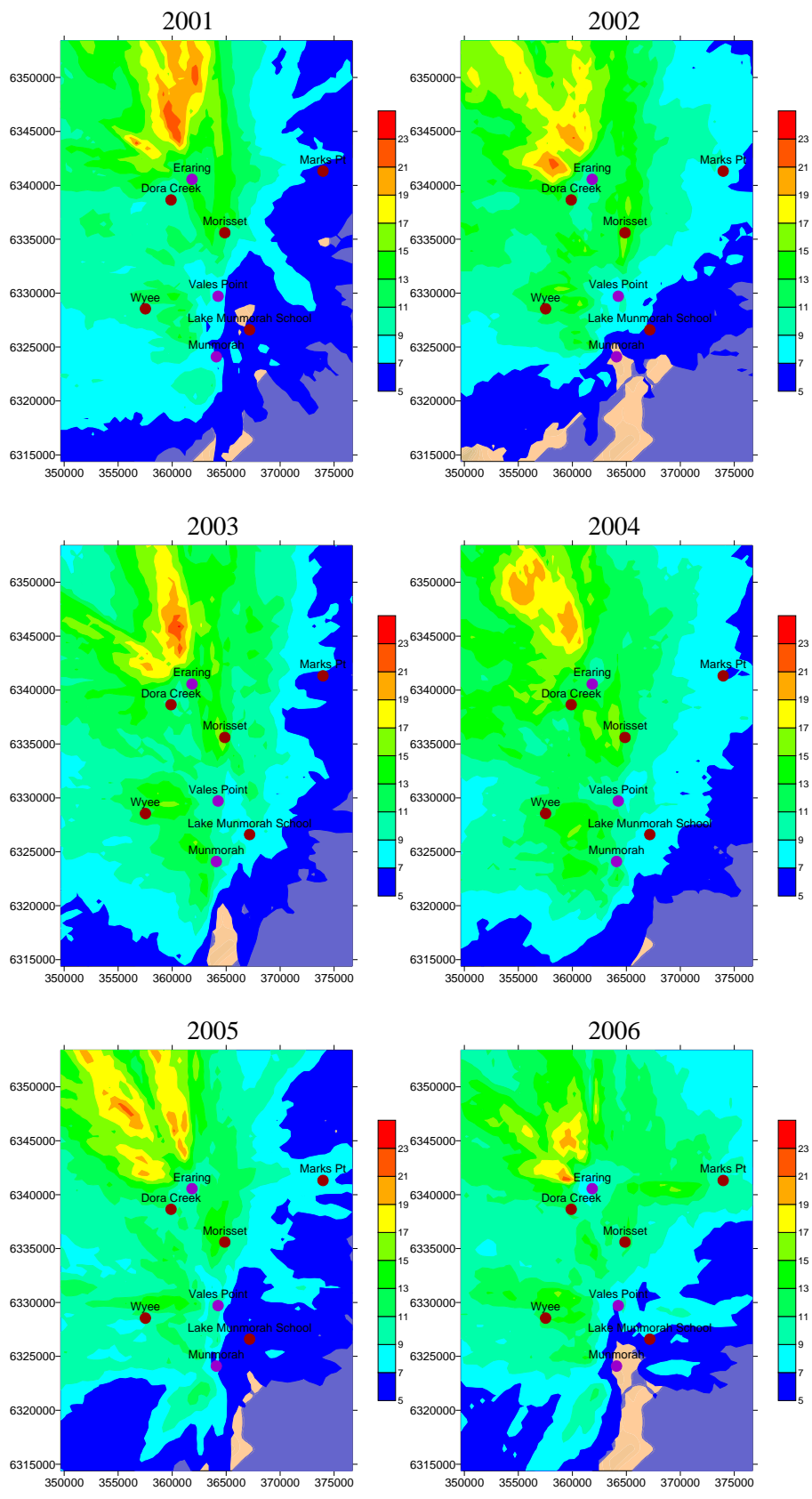


Figure 3.5b: Ninth highest hourly average concentration (pphm) for full load conditions with proposed coal sulfur content of 0.75%

3.4 Days and hours exceeding 20pphm

Table 3.6: Number of hours and days predicted to exceed 20 pphm in the Central Coast region

2001	Maximum Hours	Maximum Days	Maximum Hours Per Day
PROPOSED 0.7%	12	8	7
PROPOSED 0.75%	14	8	7
CURRENT	12	8	7
2002	Maximum Hours	Maximum Days	Maximum Hours Per Day
PROPOSED 0.7%	12	9	5
PROPOSED 0.75%	14	10	5
CURRENT	12	8	5
2003	Maximum Hours	Maximum Days	Maximum Hours Per Day
PROPOSED 0.7%	13	9	5
PROPOSED 0.75%	14	9	5
CURRENT	12	7	5
2004	Maximum Hours	Maximum Days	Maximum Hours Per Day
PROPOSED 0.7%	10	6	6
PROPOSED 0.75%	11	6	7
CURRENT	8	4	6
2005	Maximum Hours	Maximum Days	Maximum Hours Per Day
PROPOSED 0.7%	9	7	4
PROPOSED 0.75%	10	7	5
CURRENT	9	7	4
2006	Maximum Hours	Maximum Days	Maximum Hours Per Day
PROPOSED 0.7%	12	6	4
PROPOSED 0.75%	13	7	4
CURRENT	12	6	4