

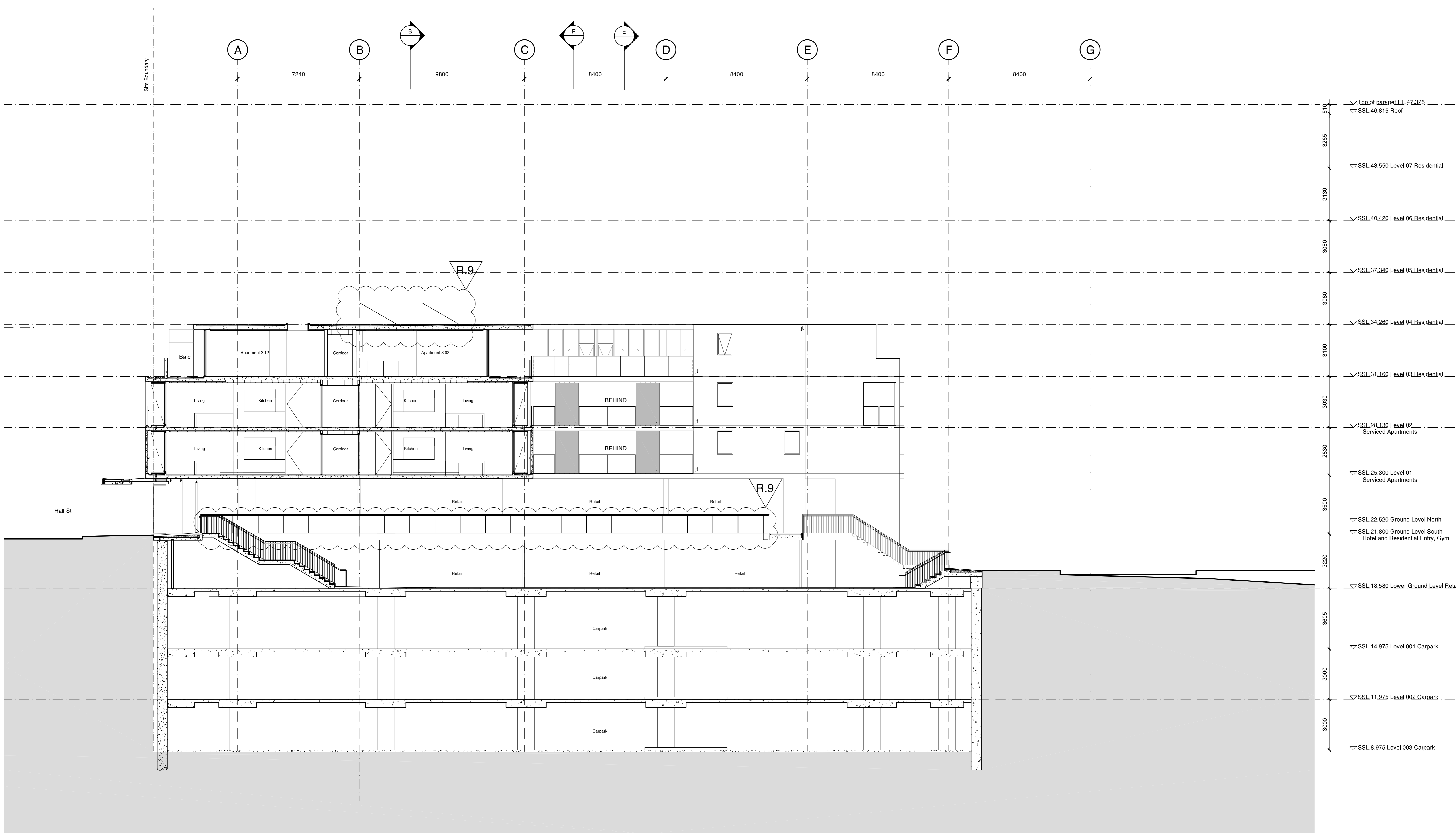
Check all dimensions and site conditions prior to commencement of any work, the purchase or ordering of any materials, fittings, plant, services or equipment and the preparation of shop drawings and/or the fabrication of any components.

Do not scale drawings - refer to figured dimensions only. Any discrepancies shall immediately be referred to the architect for clarification.

All drawings may not be reproduced or distributed without prior permission from the architect.

Legend

- Materials**
- CP-01 Textured Granosite sandbased render - white
 - CP-02 Sandblasted pre-cast concrete panels- green pigment added to mix
 - CP-03 Sandblasted pre-cast concrete panels- pink pigment added to mix
 - CP-04 Sandblasted pre-cast concrete panels- yellow pigment added to mix
 - CP-05 Sandblasted pre-cast concrete panels- blue pigment added to mix
 - CP-06 Sandblasted pre-cast concrete panels- orange pigment added to mix
 - GL-01 Glass - clear to BASIX spec below
 - GL-02 Glass - colourbacked
 - GL-02 Glass - translucent
 - GC-01 Glass canopy - clear glass with stainless steel fittings on powdercoated steel frame
 - BH-01 Balustrade - clear glass
 - BH-02 Balustrade - sandblasted glass
 - RD-01 Rollerdoor - anodised aluminium
 - LV-01 Louvre - clear glass on anodised aluminium frame
 - LV-02 Louvre - anodised aluminium



3265
3130
3080
3100
3030
2830
3500
3220
3805
3000
3000

▽ Top of parapet RL-47.325
▽ SSL-46.815 Roof

▽ SSL-43.550 Level 07 Residential

▽ SSL-40.420 Level 06 Residential

▽ SSL-37.340 Level 05 Residential

▽ SSL-34.260 Level 04 Residential

▽ SSL-31.160 Level 03 Residential

▽ SSL-28.130 Level 02 Serviced Apartments

▽ SSL-25.300 Level 01 Serviced Apartments

▽ SSL-22.520 Ground Level North

▽ SSL-21.800 Ground Level South Hotel and Residential Entry, Gym

▽ SSL-18.580 Lower Ground Level Retail

▽ SSL-14.975 Level 001 Carpark

▽ SSL-11.975 Level 002 Carpark

▽ SSL-8.975 Level 003 Carpark

9	12/04/12	MOD 4 Submission	PL	PB	
8	24/06/11	MOD 2 Submission	JC	PB	
7	04/02/11	Section 75W Submission	PL	PB	
	Revision	Date	Description	Initial	Checked

61 Hall Street, Bondi

Section G-G

Scale: 1:100@B1

Drawn: JI

Project No: ----

Status: MOD 4 Submission

Plot Date: 12/4/2012 11:21 AM

Plot File: S:\10795-10799\10788_topo_halfstreet01_main\cad\Archive\22...
...1_mod4_210312\plots\A5.607.dwg

Drawing No. **A5.607** Revision **9**

Sydney 1/243 Liverpool Street East Sydney NSW 2010 Australia
T 02 8354 5100 F 02 8354 5199
email syd@batesmart.com.au
http://www.batesmart.com.au

Melbourne 1 Nicholson Street Melbourne VIC 3000 Australia
T 03 8664 6200 F 03 8664 6300
email melb@batesmart.com.au
http://www.batesmart.com.au

Bates Smart Pty Ltd ABN 70 004 999 400

01 Section G-G