

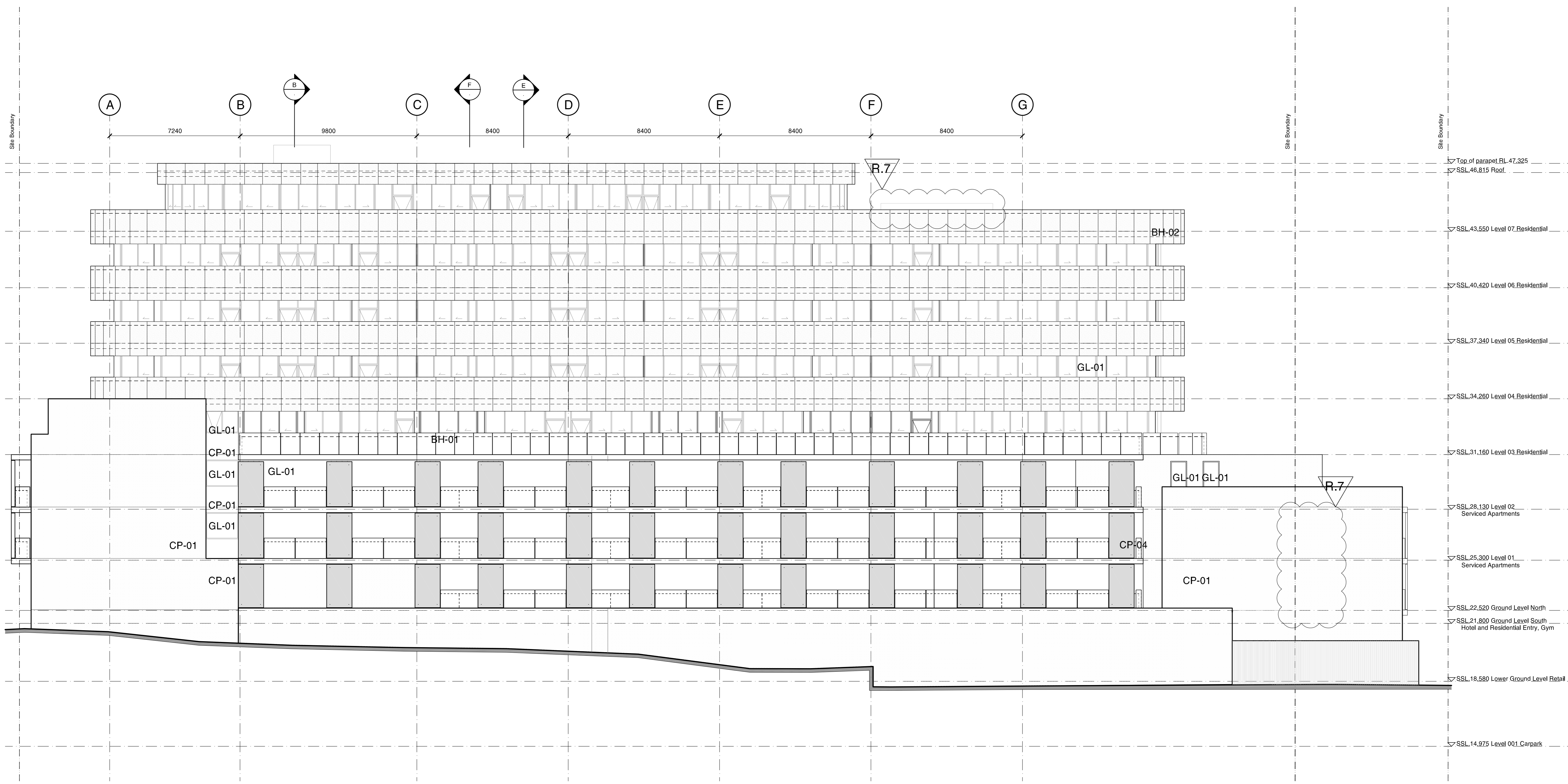
Check all dimensions and site conditions prior to commencement of any work, the purchase or ordering of any materials, fittings, plant, services or equipment and the preparation of shop drawings and/or the fabrication of any components.

Do not scale drawings - refer to figured dimensions only. Any discrepancies shall immediately be referred to the architect for clarification.

All drawings may not be reproduced or distributed without prior permission from the architect.

Legend

- Materials**
- CP-01 Textured Granosite sandbased render - white
 - CP-02 Sandblasted pre-cast concrete panels- green pigment added to mix
 - CP-03 Sandblasted pre-cast concrete panels- pink pigment added to mix
 - CP-04 Sandblasted pre-cast concrete panels- yellow pigment added to mix
 - CP-05 Sandblasted pre-cast concrete panels- blue pigment added to mix
 - CP-06 Sandblasted pre-cast concrete panels- orange pigment added to mix
 - GL-01 Glass - clear to BASIX spec below
 - GL-02 Glass - colourbacked
 - GL-02 Glass - translucent
 - GC-01 Glass canopy - clear glass with stainless steel fittings on powdercoated steel frame
 - BH-01 Balustrade - clear glass
 - BH-02 Balustrade - sandblasted glass
 - RD-01 Rollerdoor - anodised aluminium
 - LV-01 Louvre - clear glass on anodised aluminium frame
 - LV-02 Louvre - anodised aluminium



Revision	Date	Description	Initial	Checked
7	12/04/12	MOD 4 Submission	JC	PB
6	24/06/11	MOD 2 Submission	JC	PB
5	04/02/11	Section 75W Submission	PL	PB

61 Hall Street, Bondi

South East Elevation

Scale	1:100@B1
Drawn	PL
Project No.	----
Status	MOD 4 Submission
Plot Date	12/4/2012 11:18 AM
Plot File	S:\10799-10799a\10799a_10799a_61hallstreet01_main\cad\Archiv22... ...1_mod4_210312\plots\A5.104.dwg
Drawing No.	Revision

A5.104 7

Sydney 1/243 Liverpool Street
East Sydney NSW 2010 Australia
T 02 8354 5100 F 02 8354 5199
email syd@batesmart.com.au
http://www.batesmart.com.au

Melbourne 1 Nicholson Street
Melbourne VIC 3000 Australia
T 03 8664 6200 F 03 8664 6300
email melb@batesmart.com.au
http://www.batesmart.com.au

Bates Smart Pty Ltd ABN 70 004 999 400

01 South East Elevation