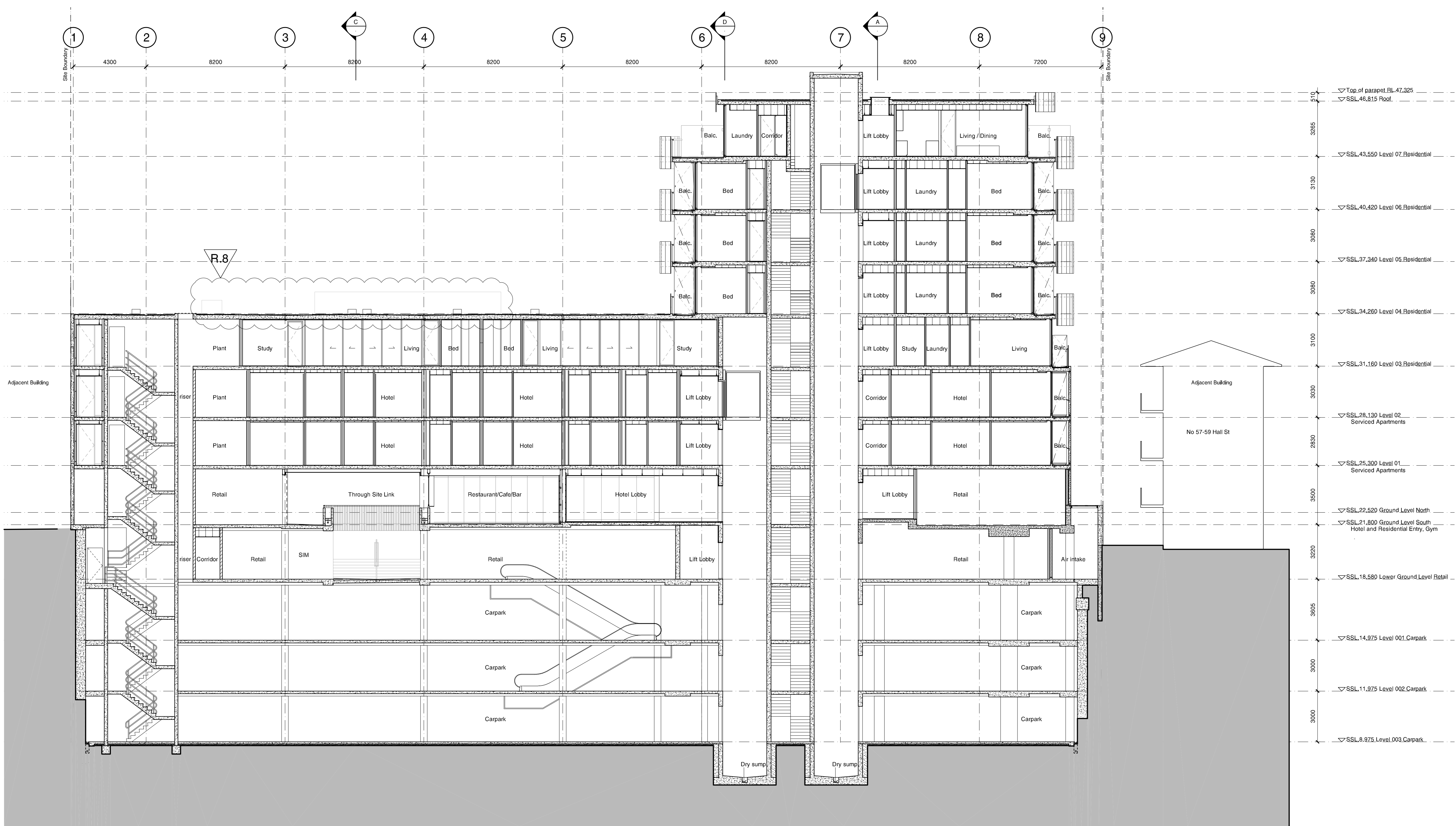


Check all dimensions and site conditions prior to commencement of any work, the purchase or ordering of any materials, fittings, plant, services or equipment and the preparation of shop drawings and/or the fabrication of any components.

Do not scale drawings - refer to figured dimensions only. Any discrepancies shall immediately be referred to the architect for clarification.

All drawings may not be reproduced or distributed without prior permission from the architect.

- Legend**
- Materials**
- CP-01 Textured Granosite sandbased render - white
 - CP-02 Sandblasted pre-cast concrete panels- green pigment added to mix
 - CP-03 Sandblasted pre-cast concrete panels- pink pigment added to mix
 - CP-04 Sandblasted pre-cast concrete panels- yellow pigment added to mix
 - CP-05 Sandblasted pre-cast concrete panels- blue pigment added to mix
 - CP-06 Sandblasted pre-cast concrete panels- orange pigment added to mix
 - GL-01 Glass - clear to BASIX spec below
 - GL-02 Glass - colourbacked
 - GL-02 Glass - translucent
 - GC-01 Glass canopy - clear glass with stainless steel fittings on powdercoated steel frame
 - BH-01 Balustrade - clear glass
 - BH-02 Balustrade - sandblasted glass
 - RD-01 Rollerdoor - anodised aluminium
 - LV-01 Louvre - clear glass on anodised aluminium frame
 - LV-02 Louvre - anodised aluminium



3285	▽ Top of parapet RL 47.325
3285	▽ SSL 46.815 Roof
3130	▽ SSL 43.550 Level 07 Residential
3080	▽ SSL 40.420 Level 06 Residential
3080	▽ SSL 37.340 Level 05 Residential
3080	▽ SSL 34.260 Level 04 Residential
3100	▽ SSL 31.160 Level 03 Residential
3030	▽ SSL 26.130 Level 02 Serviced Apartments
2830	▽ SSL 25.300 Level 01 Serviced Apartments
3500	▽ SSL 22.520 Ground Level North
3220	▽ SSL 21.800 Ground Level South Hotel and Residential Entry, Gym
3605	▽ SSL 18.580 Lower Ground Level Retail
3000	▽ SSL 14.975 Level 001 Carpark
3000	▽ SSL 11.975 Level 002 Carpark
3000	▽ SSL 8.975 Level 003 Carpark

Revision	Date	Description	Initial	Checked
8	12/04/12	MOD 4 Submission	PL	PB
7	24/06/11	MOD 2 Submission	JC	PB
6	04/02/11	Section 75W Submission	PL	PB
5	15/12/10	Section 75W Submission	PL	PB

61 Hall Street, Bondi

Section B-B

Scale: **1:100@B1**

Drawn: **JL**

Project No: **----**

Status: **MOD 4 Submission**

Plot Date: **17/4/2012 11:31 AM**

Plot File: **S:\10700-10799\10788_topo_halfstreet01_main\cad\Archivel2...
...1_mod4_210312\plots\A5.602.dwg**

A5.602 **8**

Sydney 1/243 Liverpool Street East Sydney NSW 2010 Australia
T 02 8354 5100 F 02 8354 5199
email syd@batesmart.com.au
http://www.batesmart.com.au

Melbourne 1 Nicholson Street Melbourne VIC 3000 Australia
T 03 8664 6200 F 03 8664 6300
email mel@batesmart.com.au
http://www.batesmart.com.au

Bates Smart Pty Ltd ABN 70 004 999 400