

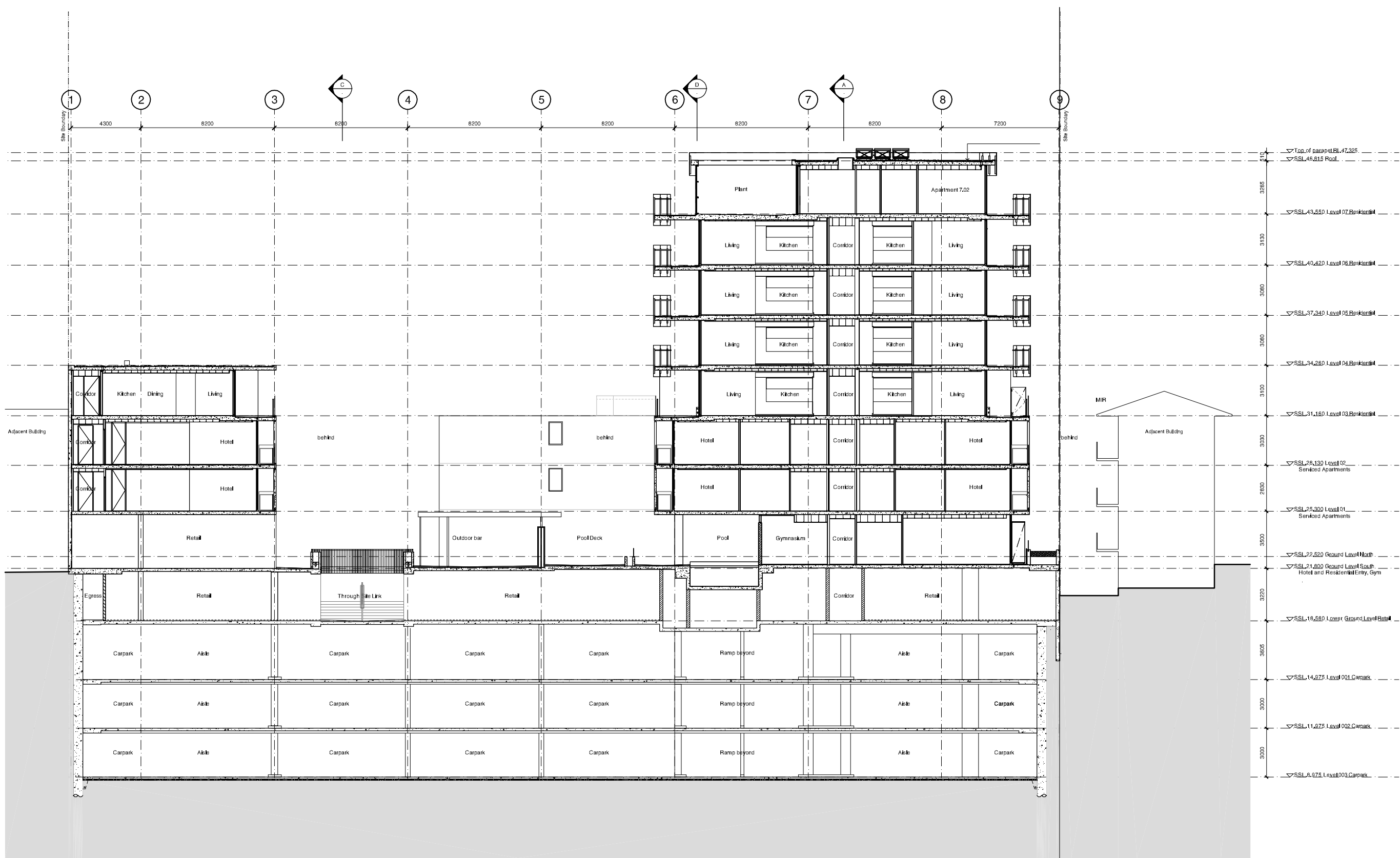
Check all dimensions and the conditions state to comment on any risk, the purchase or ordering of any materials, fittings, plants, services or equipment and the preparation of shop drawings and/or the fabrication of any components.

Do not scale drawings - refer to framed dimensions only. Any discrepancies shall immediately be referred to the architect for clarification.

All drawings may not be reproduced or distributed without permission from the architect.

Legend

- Materials**
- CP-01 Textured Granite sandbased render - white
  - CP-02 Sandblasted pre-cast concrete panels - green pigment added to mix
  - CP-03 Sandblasted pre-cast concrete panels - pink pigment added to mix
  - CP-04 Sandblasted pre-cast concrete panels - yellow pigment added to mix
  - CP-05 Sandblasted pre-cast concrete panels - blue pigment added to mix
  - CP-06 Sandblasted pre-cast concrete panels - orange pigment added to mix
  
  - GL-01 Glass - clear to BASIX spec below
  - GL-02 Glass - colourbacked
  - GL-03 Glass - translucent
  
  - GC-01 Glass canopy - clear glass with stainless steel fittings on powdercoated steel frame
  
  - BH-01 Balustrade - clear glass
  - BH-02 Balustrade - sandblasted glass
  
  - RD-01 Rollerdoor - anodised aluminium
  
  - LV-01 Louvre - clear glass on anodised aluminium frame
  - LV-02 Louvre - clear glass on aluminium



Revision	Date	Description	Initials	Checked
7	24/06/11	MOD 2 Submission	JC	PB
6	04/02/11	Section 75W Submission	PL	PB
5	13/12/10	Section 75W Submission	PL	PB

**61 Hall Street, Bondi**

**Section E-E**

Scale	1:100@B1
Drawn	JL
Project No.	10788
Status	MOD 2 Submission
Plot Date	27/6/2011 4:39 PM
Plot File	S:\10788-10788\10788_mod2_submission\10788_mod2_submission.dwg
Drawing No.	Revision

**A5.605 7**

Sydney 1243 Liverpool Street  
 East Sydney NSW 2010 Australia  
 T 02 8354 5100 F 02 8354 5199  
 email syd@batesmart.com.au  
 http://www.batesmart.com.au

Melbourne 1 Nicholson Street  
 Melbourne VIC 3000 Australia  
 T 03 8564 6200 F 03 8564 6300  
 email mel@batesmart.com.au  
 http://www.batesmart.com.au

Bates Smart Pty Ltd ABN 70 004 999 400

01 Section E-E