

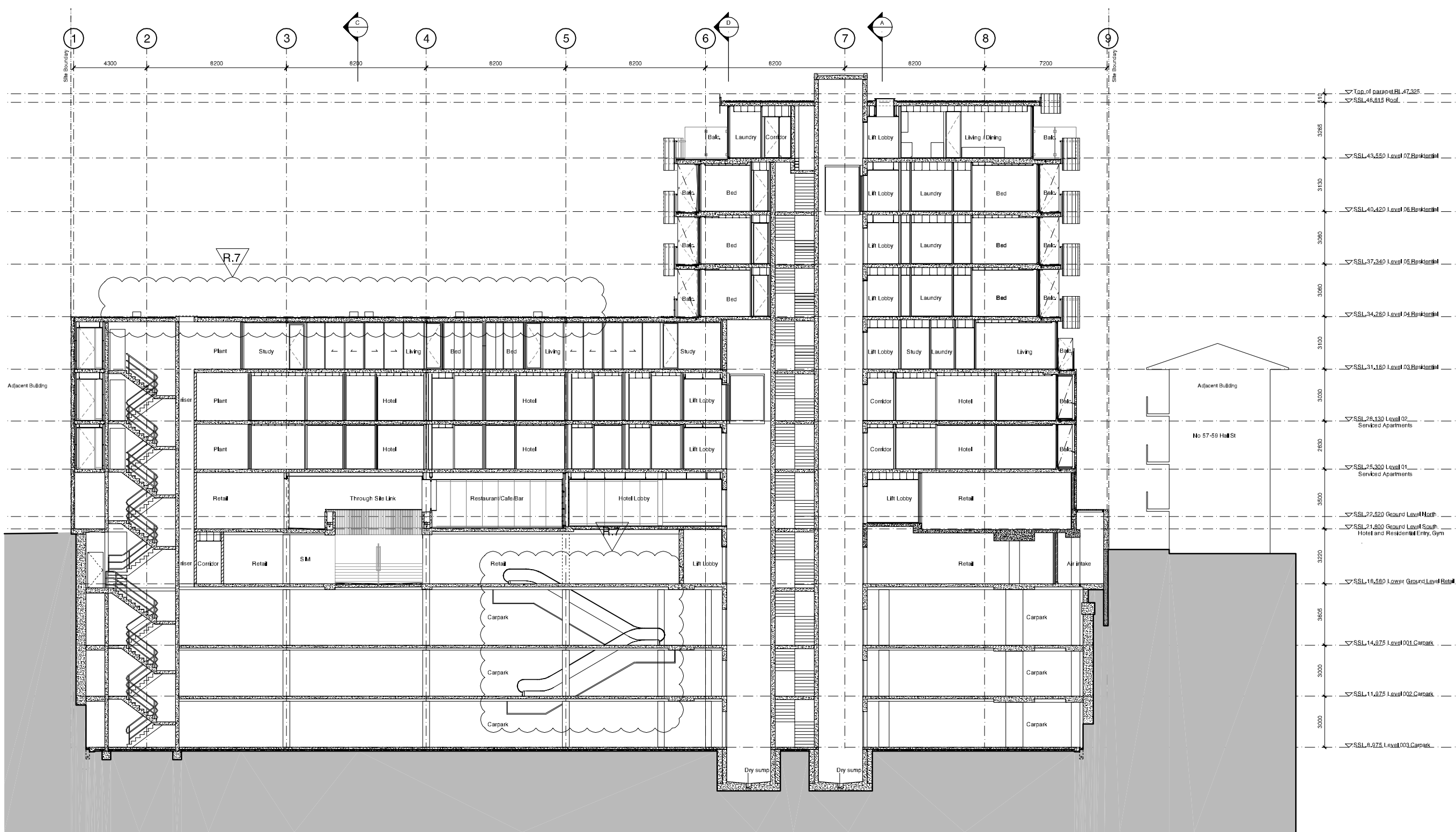
Check all dimensions and the conditions state to comment on any risk, the purchase or coding of any materials. Risks, plans, smokes or fire lines and the preparation of shop drawings and/or the fabrication of any components.

Do not scale drawings - refer to framed dimensions only. Any discrepancies shall immediately be referred to the architect for clarification.

All drawings may not be reproduced or distributed without permission from the architect.

Legend

- Materials**
- CP-01 Textured Granite sandbased render - white
 - CP-02 Sandblasted pre-cast concrete panels - green pigment added to mix
 - CP-03 Sandblasted pre-cast concrete panels - pink pigment added to mix
 - CP-04 Sandblasted pre-cast concrete panels - yellow pigment added to mix
 - CP-05 Sandblasted pre-cast concrete panels - blue pigment added to mix
 - CP-06 Sandblasted pre-cast concrete panels - orange pigment added to mix
 - GL-01 Glass - clear to BASIX spec below
 - GL-02 Glass - colourbacked
 - GL-02 Glass - translucent
 - GC-01 Glass canopy - clear glass with stainless steel fittings on powdercoated steel frame
 - BH-01 Balustrade - clear glass
 - BH-02 Balustrade - sandblasted glass
 - RD-01 Rollerdoor - anodised aluminium
 - LV-01 Louvre - clear glass on anodised aluminium frame
 - LV-02 Louvre - anodised aluminium



7	24/06/11	MOD 2 Submission	JC	PB
6	04/02/11	Section 75W Submission	PL	PB
5	13/12/10	Section 75W Submission	PL	PB

Revision Date Description Initials Checked

7 24/06/11 MOD 2 Submission JC PB

6 04/02/11 Section 75W Submission PL PB

5 13/12/10 Section 75W Submission PL PB

61 Hall Street, Bondi

Section B-B

Scale: 1:100@B1

Drawn: JI

Project No: 10788

Status: MOD 2 Submission

Plot Date: 27/8/2011 4:37 PM

Plot File: S:\10788-10788\10788_soa_hallstreet01_makibed\Arch\10788_LPA Issue_20110821\10788\CD\A5.602.dwg

Drawing No: A5.602

Revision: 7

Sydney 1243 Liverpool Street East Sydney NSW 2010 Australia
T 02 9354 5100 F 02 9354 5199
email syd@batesmart.com.au
http://www.batesmart.com.au

Melbourne 1 Nicholson Street Melbourne VIC 3000 Australia
T 03 9364 6200 F 03 9364 6300
email mel@batesmart.com.au
http://www.batesmart.com.au

Bates Smart Pty Ltd ABN 70 004 999 400