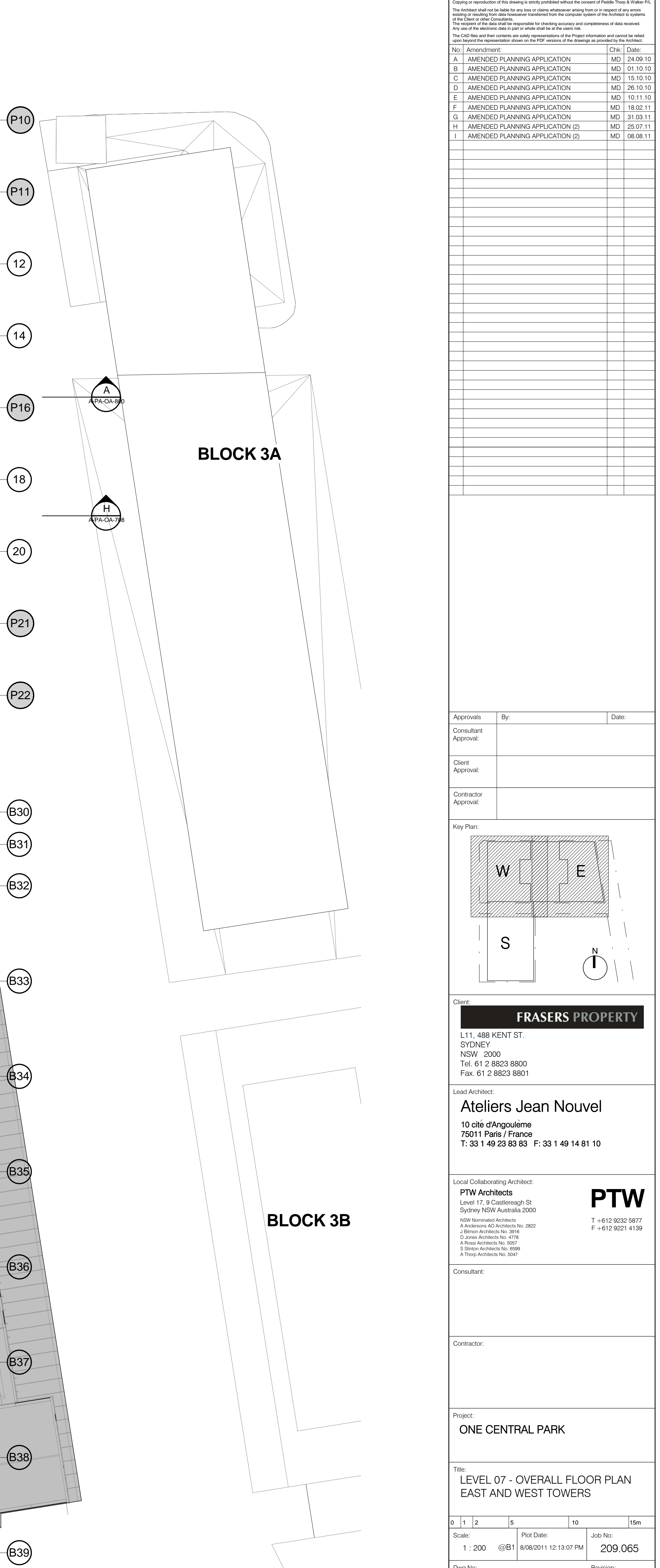


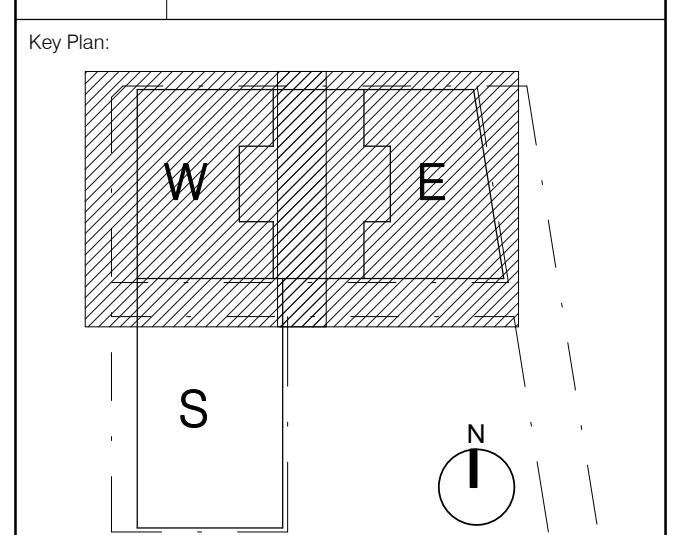
BLOCK 1+4



Do not scale from drawings.
 Copying or reproduction of this drawing is strictly prohibited without the consent of Pwidge Thompson & Walker Pty.
 The Architect shall not be liable for any loss or damage whatsoever arising from or in respect of any errors, omissions or misstatements in this drawing, or any loss or damage whatsoever arising from or in respect of any errors, omissions or misstatements in this drawing, or any loss or damage whatsoever arising from or in respect of any errors, omissions or misstatements in this drawing, or any loss or damage whatsoever arising from or in respect of any errors, omissions or misstatements in this drawing.

No.	Amendment	CHK	Date
A	AMENDED PLANNING APPLICATION	MD	24.09.10
B	AMENDED PLANNING APPLICATION	MD	01.10.10
C	AMENDED PLANNING APPLICATION	MD	15.10.10
D	AMENDED PLANNING APPLICATION	MD	26.10.10
E	AMENDED PLANNING APPLICATION	MD	10.11.10
F	AMENDED PLANNING APPLICATION	MD	18.02.11
G	AMENDED PLANNING APPLICATION	MD	31.03.11
H	AMENDED PLANNING APPLICATION (2)	MD	25.07.11
I	AMENDED PLANNING APPLICATION (2)	MD	09.08.11

Approvals	By:	Date:
Consultant Approval:		
Client Approval:		
Contractor Approval:		



Client:
FRASERS PROPERTY
 L11, 488 KENT ST.
 SYDNEY
 NSW 2000
 Tel: 61 2 8823 8800
 Fax: 61 2 8823 8801

Lead Architect:
Ateliers Jean Nouvel
 10 cité d'Angoulême
 75011 Paris / France
 T: 33 1 49 23 83 83 F: 33 1 49 14 81 10

Local Collaborating Architect:
PTW Architects
 Level 17, 8 Castlereagh St
 Sydney NSW Australia 2000
 NSW Registered Architects:
 A: Anderson Architects No. 2822
 J: Blinn Architects No. 2916
 D: Jones Architects No. 4779
 S: Sisson Architects No. 4598
 A: Peop Architects No. 5047
 T: +612 9332 5877
 F: +612 9221 4159

Contractor:
 Project:
ONE CENTRAL PARK
 Title:
**LEVEL 07 - OVERALL FLOOR PLAN
 EAST AND WEST TOWERS**

D	1	2	5	10	15m	
Scale:	1 : 200	@B1	Plot Date:	8/08/2011 12:13:07 PM	Job No:	209.065
Dwg No:	A-PA-OA-057		Revision:	I		
Status:	AMENDED PLANNING APPLICATION					