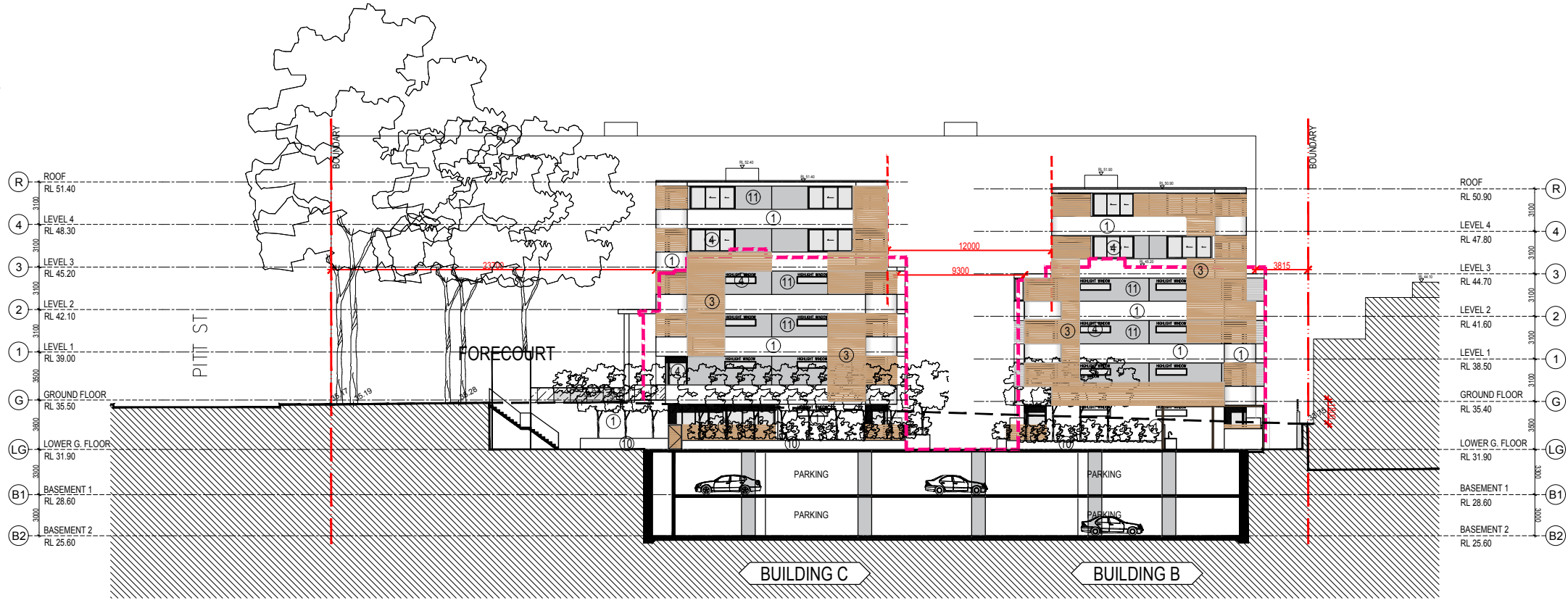
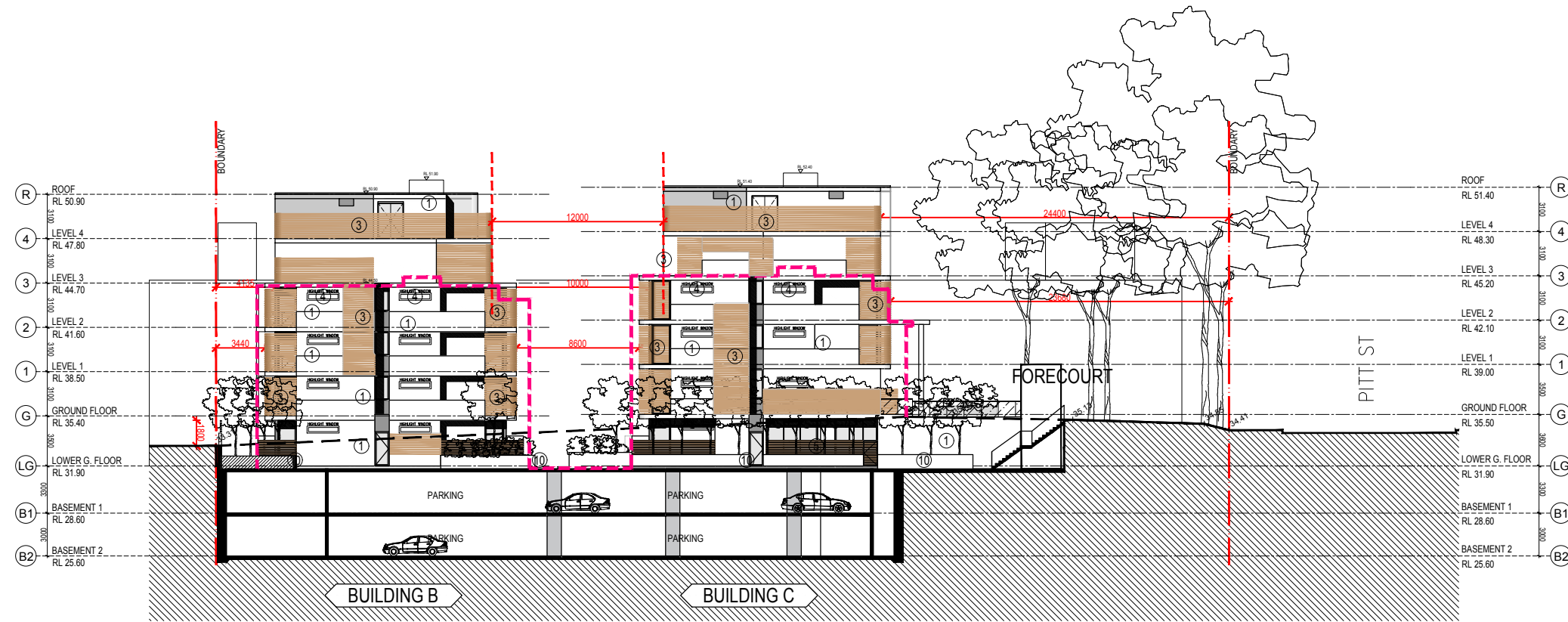


EXTERNAL MATERIAL FINISHES

- ① RENDERED AND PAINTED MASONRY / CONCRETE WALL - DULUX COLOUR NATURAL WHITE
- ② ALUMINUM PANEL - TIMBER FINISH ALUCOBOND LIGNO RUBRA ULMUS D 8003
- ③ POWDER COATED ALUMINUM LOUVRE - DULUX COLOUR HOT GINGER P10F9
- ④ POWDER COATED ALUMINUM WINDOW FRAME DULUX COLOUR OTTO'S BOY PG1G7 - CLEAR GLAZING
- ⑤ POWDER COATED ALUMINUM FENCE - DULUX COLOUR HOT GINGER P10F9
- ⑥ RENDERED AND PAINTED MASONRY / CONCRETE COLUMN - DULUX COLOUR NATURAL WHITE
- ⑦ RENDERED AND PAINTED MASONRY / CONCRETE COLUMN - DULUX COLOUR HOT GINGER P10F9
- ⑧ POWDER COATED ALUMINUM VENTILATION LOUVRE - DULUX COLOUR NATURAL WHITE
- ⑨ POWDER COATED ALUMINUM BALUSTRADE - DULUX COLOUR OTTO'S BOY PG1G7 - CLEAR GLAZING
- ⑩ RENDERED AND PAINTED MASONRY / CONCRETE PLANTER BOX - DULUX COLOUR NATURAL WHITE
- ⑪ RENDERED AND PAINTED MASONRY / CONCRETE WALL - DULUX COLOUR GRAINGER PG1G3
- ⑫ POWDER COATED ALUMINUM LOUVRE DULUX COLOUR OTTO'S BOY PG1G7
- ⑬ RENDERED BRICK WALL - BROWN



NORTH ELEVATION - BUILDING B.C



SOUTH ELEVATION - BUILDING B.C

Rev.	Description	By	Date
A	MODIFIED PROJECT SUBMISSION	DC	SEPT 2016
B	FOR COORDINATION	TL	MAY 2017
C	ADDITIONAL INFORMATION	TL	JUL 2017
D	ADDITIONAL INFORMATION	TL	OCT 2017

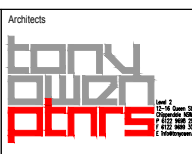
Disclaimer
 THESE DRAWINGS ARE PRELIMINARY DRAWINGS AND ARE SUBJECT TO CHANGE WITHOUT NOTICE DURING THE COURSE OF THE PROPOSED DEVELOPMENT AND IN CONSULTATION WITH THE COUNCIL. SUBMISSION OF THE DRAWINGS DOES NOT CONSTITUTE A REPRESENTATION OR WARRANTY BY THE DEVELOPER OR ITS SERVANTS, AGENTS OR CONTRACTORS THAT THE DRAWINGS ARE FINAL AND THAT THE PROPOSED DEVELOPMENT WILL TAKE PLACE IN ACCORDANCE WITH THESE DRAWINGS.
 BEFORE CARRYING OUT ANY WORK ENSURE THAT THE DRAWINGS USED CARRY THE LATEST AMENDMENT NO.

Notes
 DRAWINGS MADE TO A LARGER SCALE AND THOSE SHOWING PARTICULAR DETAIL OR WORK SHALL TAKE PRECEDENCE OVER DRAWINGS MADE TO A SMALLER SCALE AND FOR MORE GENERAL PURPOSES.
 WHERE ANY DISCREPANCY EXISTS BETWEEN FIGURED AND SCALED DIMENSIONS, THE FIGURED DIMENSIONS SHALL PREVAIL.
 BUILDER TO CHECK ALL SITE DIMENSIONS PRIOR TO FABRICATION OF ITEMS.
 THESE DOCUMENTS AND ANY WORK EXECUTED AS A RESULT OF THESE DOCUMENTS SHALL BE SUBJECT TO THE CONDITIONS SET OUT IN THE CONDITIONS OF ENGAGEMENT.

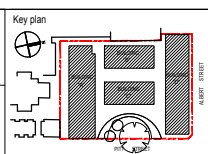
Legend
Ⓢ

Consultants
dmps

Client
KAYMET CORPORATION PTY LTD



Project
RACHEL FORSTER
Project address
134 - 144 PITT STREET, REDFERN



Scale	Date
1:200	JULY 2017
Drawing title	
NORTH & SOUTH ELEVATION	
Project no. 656	Drawing no.
Drawn RA.TL	A204
Rev	D
Drawing status	
ADDITIONAL INFORMATION	