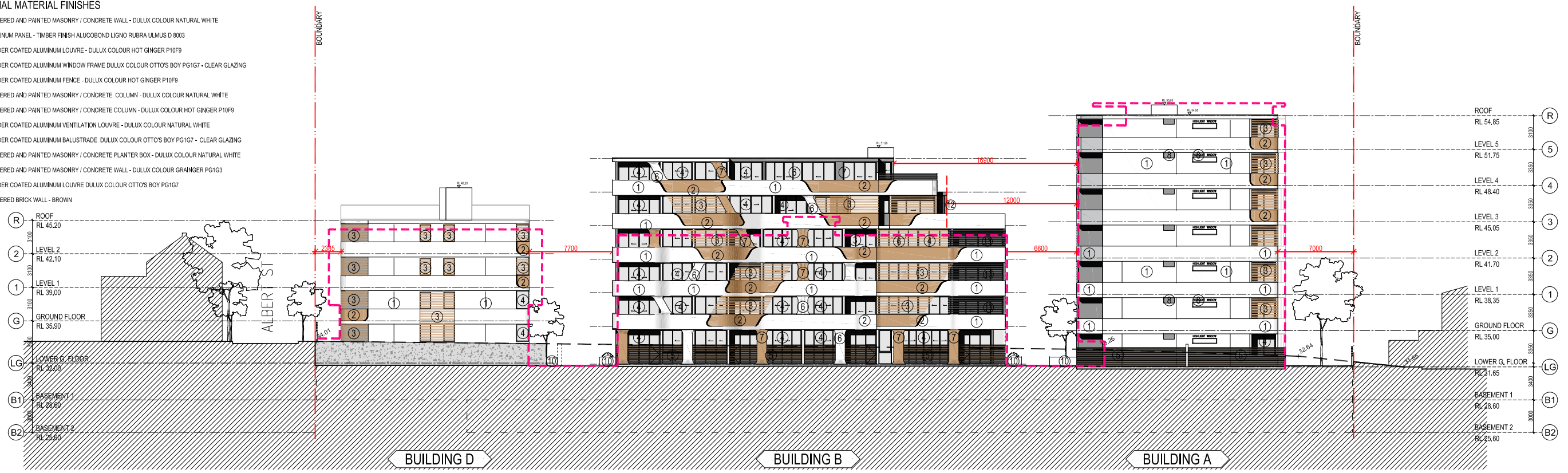
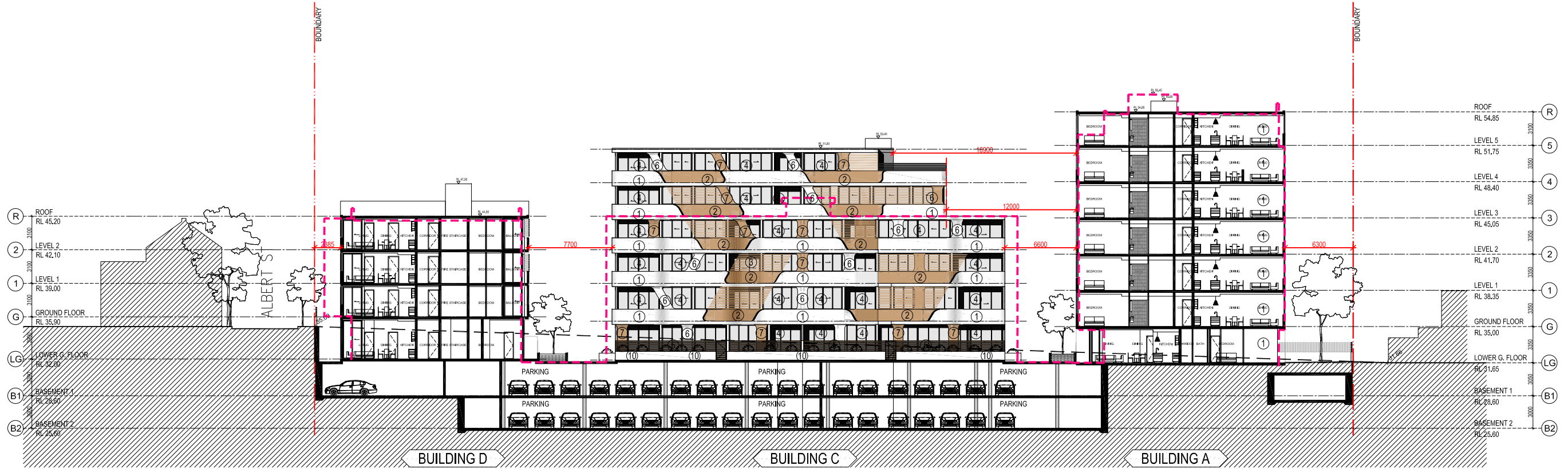


EXTERNAL MATERIAL FINISHES

- ① RENDERED AND PAINTED MASONRY / CONCRETE WALL - DULUX COLOUR NATURAL WHITE
- ② ALUMINUM PANEL - TIMBER FINISH ALUCOBOND LIGNO RUBRA ULMUS D 8003
- ③ POWDER COATED ALUMINUM LOUVRE - DULUX COLOUR HOT GINGER P10F9
- ④ POWDER COATED ALUMINUM WINDOW FRAME DULUX COLOUR OTTO'S BOY PG1G7 - CLEAR GLAZING
- ⑤ POWDER COATED ALUMINUM FENCE - DULUX COLOUR HOT GINGER P10F9
- ⑥ RENDERED AND PAINTED MASONRY / CONCRETE COLUMN - DULUX COLOUR NATURAL WHITE
- ⑦ RENDERED AND PAINTED MASONRY / CONCRETE COLUMN - DULUX COLOUR HOT GINGER P10F9
- ⑧ POWDER COATED ALUMINUM VENTILATION LOUVRE - DULUX COLOUR NATURAL WHITE
- ⑨ POWDER COATED ALUMINUM BALUSTRADE DULUX COLOUR OTTO'S BOY PG1G7 - CLEAR GLAZING
- ⑩ RENDERED AND PAINTED MASONRY / CONCRETE PLANTER BOX - DULUX COLOUR NATURAL WHITE
- ⑪ RENDERED AND PAINTED MASONRY / CONCRETE WALL - DULUX COLOUR GRAINGER PG1G3
- ⑫ POWDER COATED ALUMINUM LOUVRE DULUX COLOUR OTTO'S BOY PG1G7
- ⑬ RENDERED BRICK WALL - BROWN



WEST ELEVATION - BUILDING A.B.D



WEST ELEVATION - BUILDING A.C.D

Rev.	Description	By	Date	Disclaimer	Notes	Legend	Consultants	Client	Architects	Project	Key plan	Scale	Date
A	MODIFIED PROJECT SUBMISSION	DC	SEPT 2016	"THESE DRAWINGS ARE PRELIMINARY DRAWINGS AND ARE SUBJECT TO CHANGE WITHOUT NOTICE DURING THE COURSE OF THE PROPOSED DEVELOPMENT. THE SUBMISSION OF THESE DRAWINGS DOES NOT CONSTITUTE A REPRESENTATION OR WARRANTY BY THE DESIGNER OR ITS SEPARATE AGENTS OR CONTRACTORS THAT THE DRAWINGS ARE TRUE AND THAT THE PROPOSED DEVELOPMENT WILL TAKE PLACE IN ACCORDANCE WITH THESE DRAWINGS." BEFORE CARRYING OUT ANY WORK ENSURE THAT THE DRAWINGS USED CARRY THE LATEST AMENDMENT No.	DRAWINGS MADE TO A LARGER SCALE AND THOSE SHOWING PARTICULAR DETAIL OF WORK SHALL TAKE PRECEDENCE OVER DRAWINGS MADE TO A SMALLER SCALE AND FOR MORE GENERAL PURPOSES. WHERE ANY DISCREPANCY EXISTS BETWEEN FIGURED AND SCALED DIMENSIONS, THE FIGURED DIMENSIONS SHALL PREVAIL. BUILDER TO CHECK ALL SITE DIMENSIONS PRIOR TO PARTICIPATION OF FINISHES.	<ul style="list-style-type: none"> ① ② ③ ④ ⑤ ⑥ ⑦ ⑧ ⑨ ⑩ ⑪ ⑫ ⑬ 	dmps	KAYMET CORPORATION PTY LTD	TONY OWEN ptnrs	RACHEL FORSTER Project address 134 - 144 PITT STREET, REDFERN		Scale: 1:100 Date: JULY 2017	
B	FOR COORDINATION	TL	MAY 2017										
C	ADDITIONAL INFORMATION	TL	JUL 2017										
D	ADDITIONAL INFORMATION	TL	OCT 2017										
Project no. 956 Drawing no. A201 Rev. D Drawing status: ADDITIONAL INFORMATION													