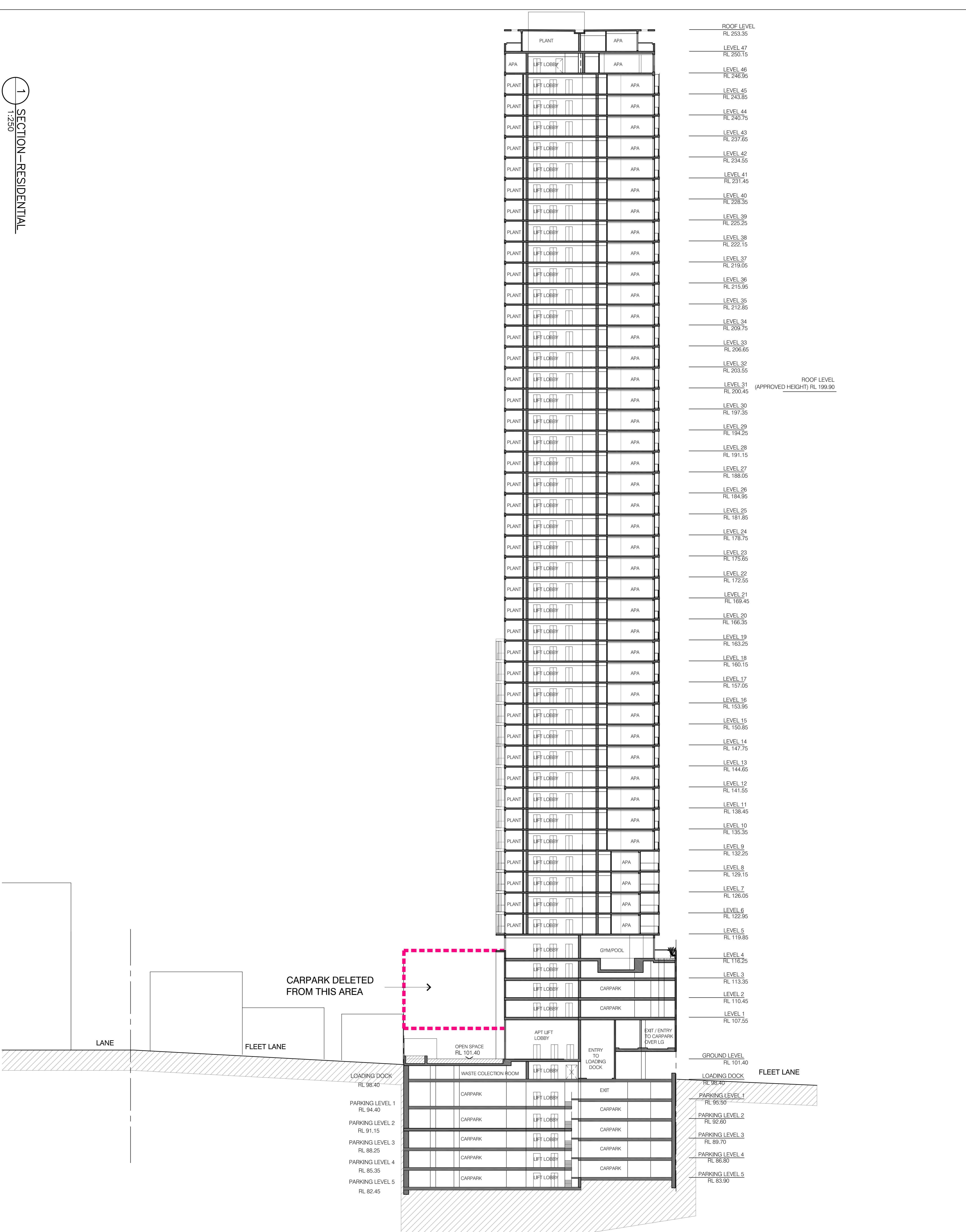


1 SECTION - RESIDENTIAL  
1:250



ROOF LEVEL	RL 253.35
LEVEL 47	RL 250.15
LEVEL 46	RL 246.95
LEVEL 45	RL 243.85
LEVEL 44	RL 240.75
LEVEL 43	RL 237.65
LEVEL 42	RL 234.55
LEVEL 41	RL 231.45
LEVEL 40	RL 228.35
LEVEL 39	RL 225.25
LEVEL 38	RL 222.15
LEVEL 37	RL 219.05
LEVEL 36	RL 215.95
LEVEL 35	RL 212.85
LEVEL 34	RL 209.75
LEVEL 33	RL 206.65
LEVEL 32	RL 203.55
LEVEL 31	RL 200.45
LEVEL 30	RL 197.35
LEVEL 29	RL 194.25
LEVEL 28	RL 191.15
LEVEL 27	RL 188.05
LEVEL 26	RL 184.95
LEVEL 25	RL 181.85
LEVEL 24	RL 178.75
LEVEL 23	RL 175.65
LEVEL 22	RL 172.55
LEVEL 21	RL 169.45
LEVEL 20	RL 166.35
LEVEL 19	RL 163.25
LEVEL 18	RL 160.15
LEVEL 17	RL 157.05
LEVEL 16	RL 153.95
LEVEL 15	RL 150.85
LEVEL 14	RL 147.75
LEVEL 13	RL 144.65
LEVEL 12	RL 141.55
LEVEL 11	RL 138.45
LEVEL 10	RL 135.35
LEVEL 9	RL 132.25
LEVEL 8	RL 129.15
LEVEL 7	RL 126.05
LEVEL 6	RL 122.95
LEVEL 5	RL 119.85
LEVEL 4	RL 116.75
LEVEL 3	RL 113.65
LEVEL 2	RL 110.55
LEVEL 1	RL 107.45
GROUND LEVEL	RL 101.40
LOADING DOCK	RL 98.40
PARKING LEVEL 1	RL 94.40
PARKING LEVEL 2	RL 91.15
PARKING LEVEL 3	RL 88.25
PARKING LEVEL 4	RL 85.35
PARKING LEVEL 5	RL 82.45
LOADING DOCK	RL 98.40
PARKING LEVEL 1	RL 95.50
PARKING LEVEL 2	RL 92.60
PARKING LEVEL 3	RL 89.70
PARKING LEVEL 4	RL 86.80
PARKING LEVEL 5	RL 83.90
ROOF LEVEL (APPROVED HEIGHT)	RL 199.90

<p>Revisions</p>	<p>D 5/24 Modification 6 04.2013</p> <p>C Section 75W Submission 11.2012</p> <p>B EA Submission 18.12.09</p> <p>A submitted for Treat of adequacy 09.11.09</p> <p>Do not scale from drawings. Verify all dimensions on site before commencing work. Copying or the reproduction of this drawing is strictly prohibited without the consent of PTW Architects P/L.</p>	<p>Client <b>Merrion Group</b> Level 11 Merrion Tower, 528 Kent St, Sydney NSW 2000</p>	<p>Architect <b>PTW Architects</b></p>	<p>Level 13, 9 Castlereagh St Sydney NSW Australia 2000 T 612 9232 5877 F 612 9221 4139 www.ptw.com.au</p>	<p>Contractor</p>	<p>Planner - Structural - Services - Landscape - Acoustics - Traffic -</p>	<p><b>MERRITON THOMAS STREET</b> Thomas Street/ Albert Avenue Chatswood NSW 2067</p>	<p>Project No. 212007 Scale: 1:250@A1:1:500@A3 Date: 10/09/2009 Drawn: ALJKP Checked: EA Approved: SP</p>	<p>SECTION - BUILDING 1 (RESIDENTIAL) <b>A-0131 D</b> SECTION 75 W MODIFICATION 6</p>
------------------	---	---	--	--	-------------------	--	--	---	---