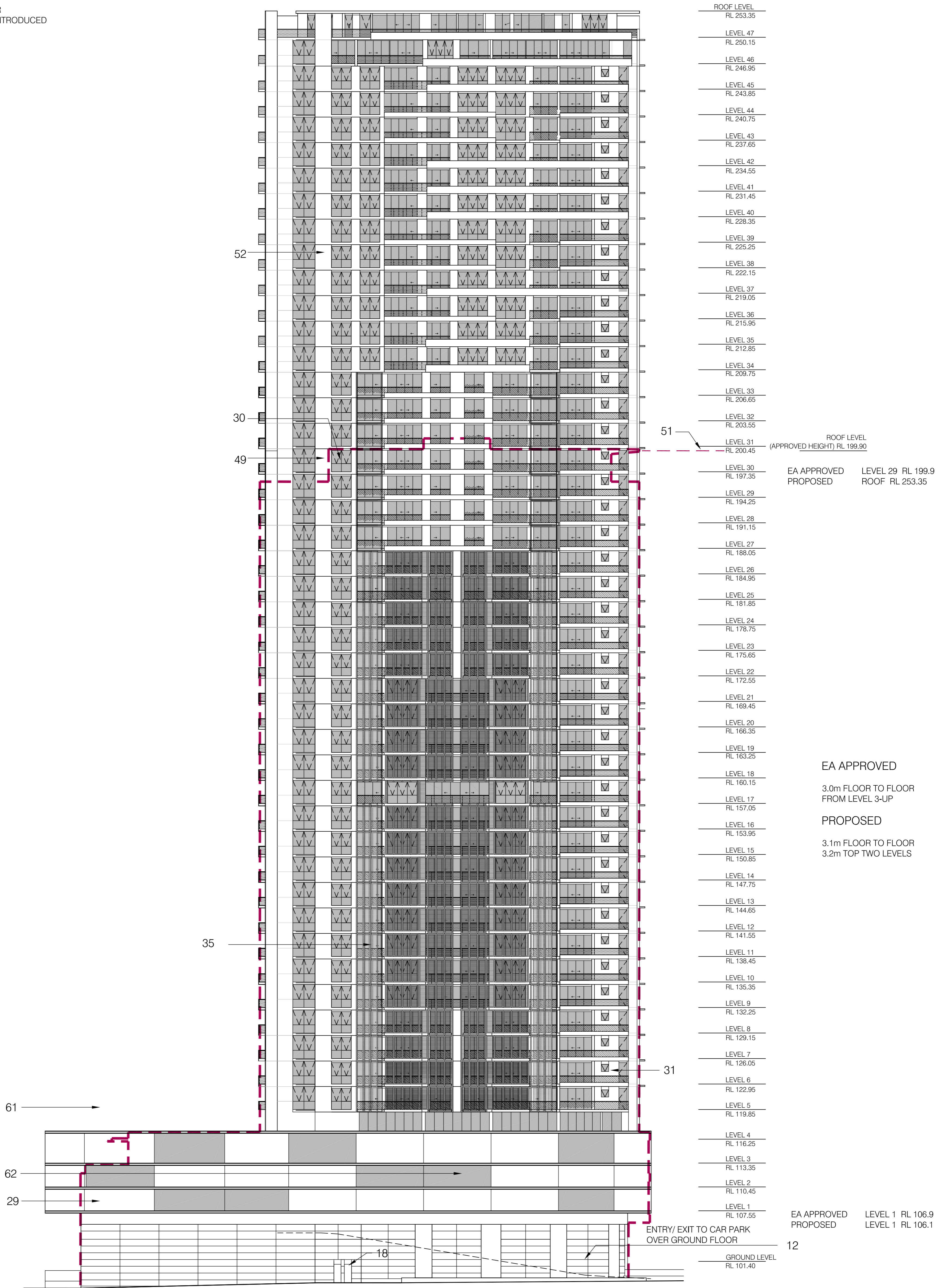


LEGEND

- 12. ENTRY/EXIT RAMP TO THE CAR PARK ABOVE THE GROUND FLOOR INTRODUCED
- 15. BUILDING OUTLINE EXTENDED
- 18. TOWER FIRE STAIRS RELOCATED
- 29. RETAIL DELETED
- 30. PLANT DELETED FROM LEVEL 29
- 31. SWIMMING POOL /GYM RELOCATED FROM LEVEL 2 TO LEVEL 4
- 35.PRIVACY SCREENS TO LEVELS 3-18 AS PER SK-010
- 42. PLANT ROOM DELETED FROM LEVEL 2
- 49. EA APPROVED BUILDING ENVELOPE
- 51. EA APPROVED HEIGHT RL199.9
- 52. LEVELS ADDED TO RESIDENTIAL TOWER
- 61. CAR PARKING OVER GROUND FLOOR INTRODUCED

1 BUILDING 1 ELEVATION - EAST
1:250



<p>Planner</p> <p>Structural</p> <p>Services</p> <p>Landscapes</p> <p>Acoustics</p> <p>Traffic</p>	<p>Consultants</p>	<p>Client</p> <p>Merriton Group</p> <p>Level 11 Merriton Tower,</p> <p>528 Kent St,</p> <p>Sydney NSW 2000</p>	<p>Architect</p> <p>PTW Architects</p> <p>Level 13, 9 Castlereagh St</p> <p>Sydney NSW Australia 2000</p> <p>T 612 9232 5877</p> <p>F 612 9221 4139</p> <p>www.ptw.com.au</p>	<p>Contractor</p>	<p>Project No.</p> <p>212007</p> <p>Scale:</p> <p>1:250@A1:1:500@A3</p> <p>Date:</p> <p>10/9/2009</p> <p>Drawn:</p> <p>AL/KP</p> <p>Checked:</p> <p>EA</p> <p>Approved:</p> <p>Sp</p>	<p>MERRITON THOMAS STREET</p> <p>Thomas Street/ Albert Avenue</p> <p>Chatswood NSW 2067</p>
--	--------------------	--	---	-------------------	---	---

BUILDING 1
ELEVATION - EAST
A-0123
SECTION 75 W SUBMISSION