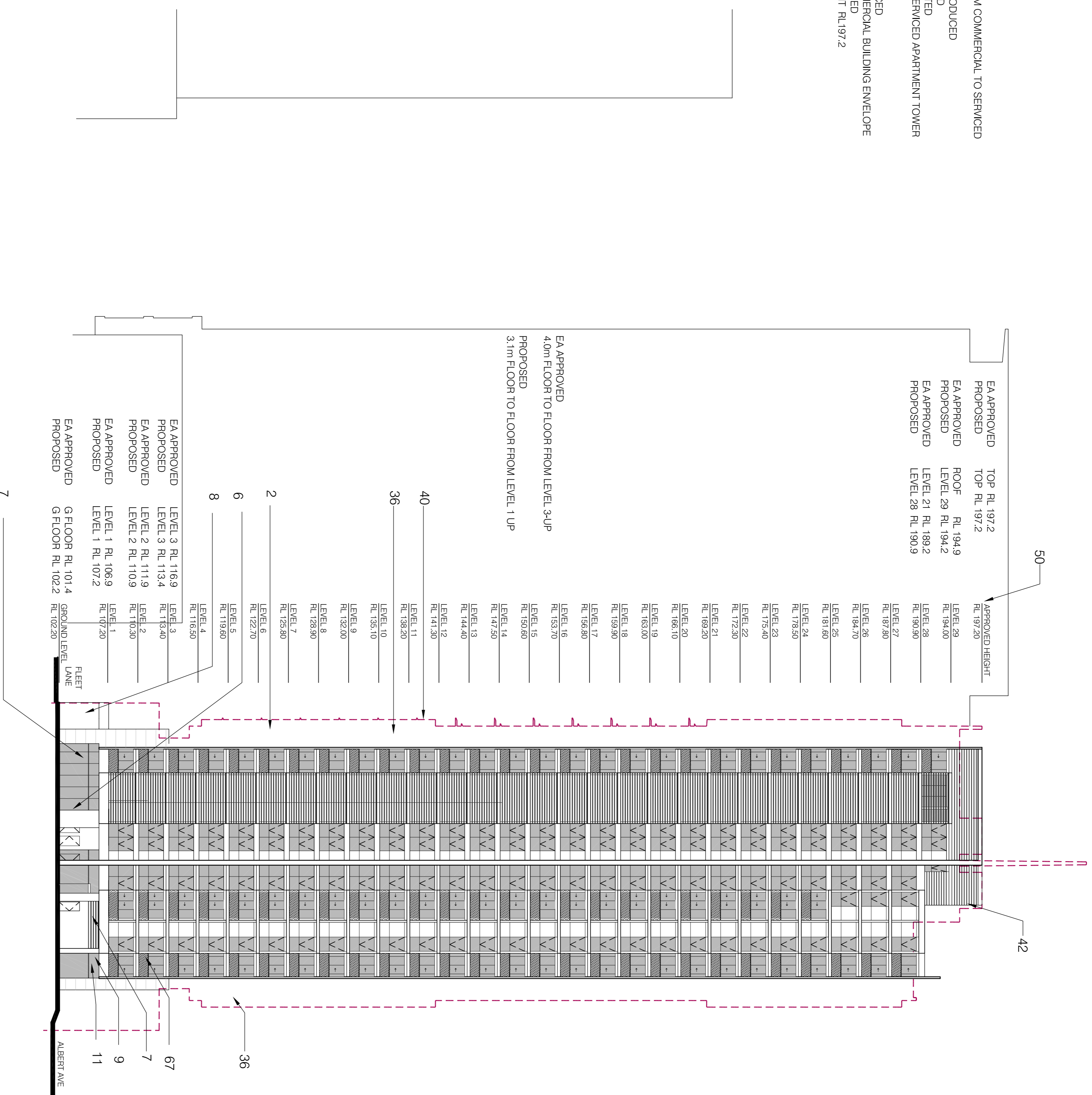


- LEGEND**
- 2. CHANGE OF USE FROM COMMERCIAL TO SERVICED APARTMENTS - SK-006
 - 6.PORTE COSHERE INTRODUCED
 - 7. FIRE STAIR RELOCATED
 - 8. SUBSTATION RELOCATED
 - 9. GROUND FLOOR TO SERVICED APARTMENT TOWER REDESIGNED
 - 11. RETAIL RELOCATED
 - 36. FLOOR PLATE REDUCED
 - 40. EA APPROVED COMMERCIAL BUILDING ENVELOPE
 - 42. PLANT ROOM REDUCED
 - 50. EA APPROVED HEIGHT RL.197.2
 - 67. PLANT DELETED



1 BUILDING 2 ELEVATION - WEST
1:250

C Section 75W Submission 19/07/12
B EA Submission 18.12.09
A submitted for Test of adequacy 09.11.09

Do not scale from drawings. Verify all dimensions on site before commencing work. Copying or the reproduction of this drawing is strictly prohibited without the consent of PTW Architects P/L.

Client
Meriton Group
Level 11 Meriton Tower,
528 Kent St,
Sydney NSW 2000

Architect

PTW

PTW Architects
Level 13, 9 Castlereagh St
Sydney NSW Australia 2000
T 612 9232 5877
F 612 9221 4139
www.ptw.com.au

Contractor

- Consultants**
- Planner
 - Structural
 - Services
 - Landscape
 - Acoustics
 - Traffic

MERITON THOMAS STREET
Thomas Street/ Albert Avenue
Chatswood NSW 2067

Project No. 212007
Scale: 1:250@A1:1:500@A3
Date: 10/9/2009
Drawn: AL/AN
Checked: EA
Approved: SP

BUILDING 2
ELEVATION - WEST
A-0126 C
SECTION 75 W SUBMISSION