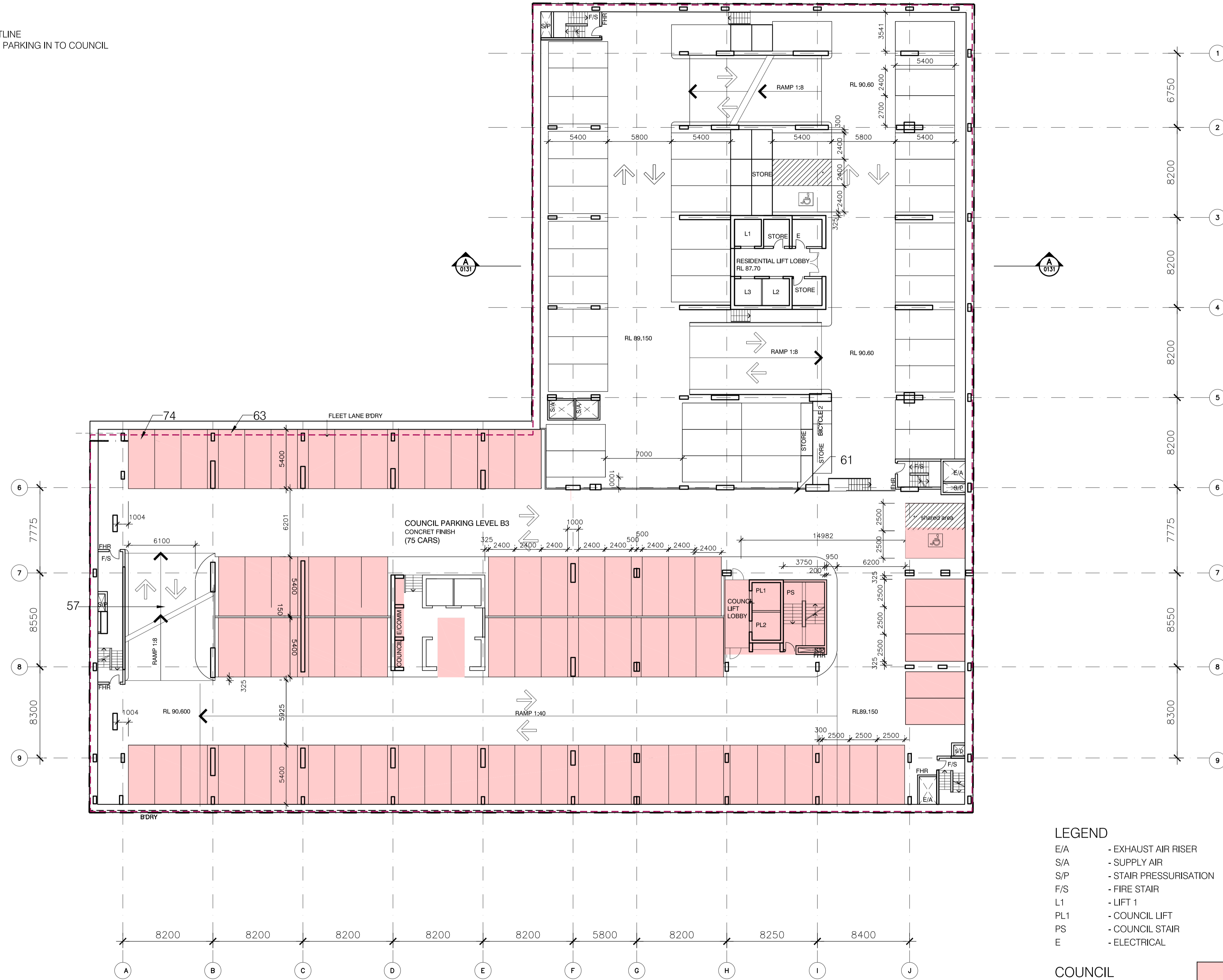


LEGEND

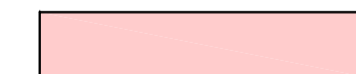
- 63. EA APPROVED BASEMENT OUTLINE
- 74. ENCROACHMENT OF THE CAR PARKING IN TO COUNCIL LAND



LEGEND

- E/A - EXHAUST AIR RISER
- S/A - SUPPLY AIR
- S/P - STAIR PRESSURISATION
- F/S - FIRE STAIR
- L1 - LIFT 1
- PL1 - COUNCIL LIFT
- PS - COUNCIL STAIR
- E - ELECTRICAL

COUNCIL



1 BASEMENT 3 PLAN
1:200

Revisions

E	Section 75W Submission	19.07.2012
D	CC Submission, Council comments inundated	11.07.2012
C	Construction Certificate Submission	2.07.2012
B	ISSUE FOR CC	12.06.2012

Do not scale from drawings. Verify all dimensions on site before commencing work. Copying or the reproduction of this drawing is strictly prohibited without the consent of PTW Architects P/L.

Client
Meriton Group
Level 11 Meriton Tower,
528 Kent St,
Sydney NSW 2000

Architect
PTW Architects
Level 13, 9 Castlereagh St
Sydney NSW Australia 2000
T 612 9232 5877
F 612 9221 4139
www.ptw.com.au

Contractor

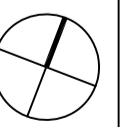
Consultants

- Planner -
- Structural -
- Services -
- Landscape -
- Acoustics -
- Traffic -

MERITON THOMAS STREET

Thomas Street/ Albert Avenue
Chatswood NSW 2067

Project No.	212007
Scale:	1:200@A1; 1:400@A3
Date:	APRIL 2012
Drawn:	EA/RB
Checked:	EA
Approved:	SP



BASEMENT 3 PLAN

A-0113 E
SECTION 75 W SUBMISSION