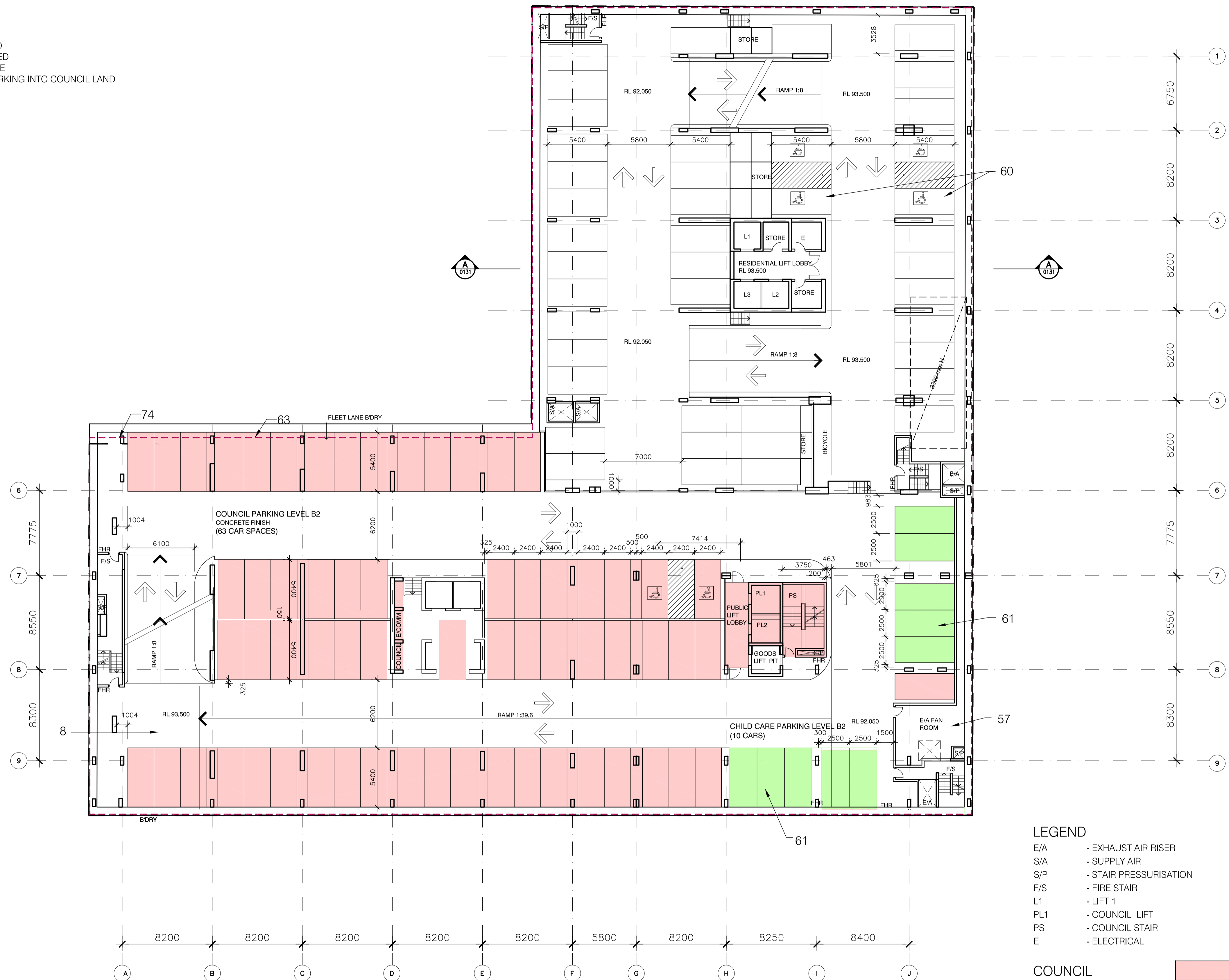


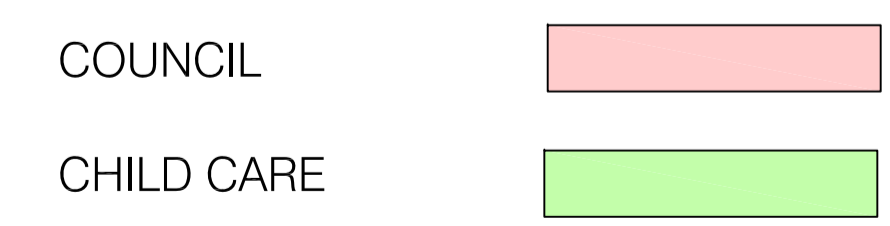
LEGEND

- 57. PLANT ROOM ENLARGED
- 60. DISABLE PARKING SPACES ADDED
- 61. CHILD CARE PARKING INTRODUCED
- 63. EA APPROVED BASEMENT OUTLINE
- 74. ENCROACHMENT OF THE CAR PARKING INTO COUNCIL LAND



LEGEND

- E/A - EXHAUST AIR RISER
- S/A - SUPPLY AIR
- S/P - STAIR PRESSURISATION
- F/S - FIRE STAIR
- L1 - LIFT 1
- PL1 - COUNCIL LIFT
- PS - COUNCIL STAIR
- E - ELECTRICAL



E Section 75W Submission	19.07.2012
D CC Submission, Council comments inundated	11.07.2012
C Construction Certificate Submission	2.07.2012
B ISSUE FOR CC	12.06.2012

Do not scale from drawings. Verify all dimensions on site before commencing work. Copying or the reproduction of this drawing is strictly prohibited without the consent of PTW Architects P/L.

Client  
**Meriton Group**  
 Level 11 Meriton Tower,  
 528 Kent St,  
 Sydney NSW 2000

Architect  
**PTW Architects**  
 Level 13, 9 Castlereagh St  
 Sydney NSW Australia 2000  
 T 612 9232 5877  
 F 612 9221 4139  
 www.ptw.com.au

Contractor

Consultants

Planner	-
Structural	-
Services	-
Landscape	-
Acoustics	-
Traffic	-

**MERITON THOMAS STREET**  
 Thomas Street/ Albert Avenue  
 Chatswood NSW 2067

Project No.	212007
Scale:	1:200@A1; 1:400@A3
Date:	APRIL 2012
Drawn	EA/DH
Checked	EA
Approved	SP

**1 BASEMENT 2 PLAN**  
 1:200