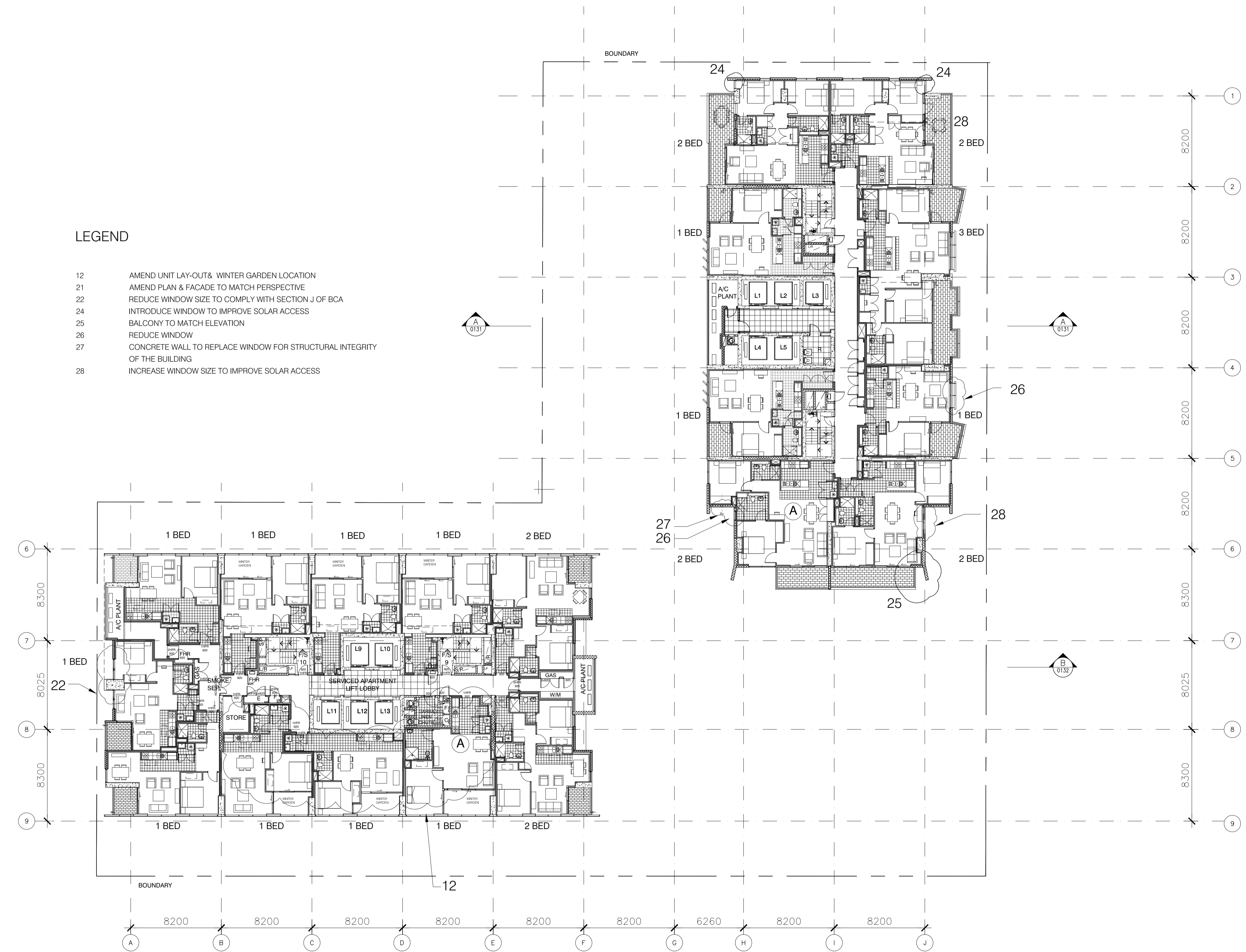


LEGEND

- 12 AMEND UNIT LAY-OUT & WINTER GARDEN LOCATION
- 21 AMEND PLAN & FACADE TO MATCH PERSPECTIVE
- 22 REDUCE WINDOW SIZE TO COMPLY WITH SECTION J OF BCA
- 24 INTRODUCE WINDOW TO IMPROVE SOLAR ACCESS
- 25 BALCONY TO MATCH ELEVATION
- 26 REDUCE WINDOW
- 27 CONCRETE WALL TO REPLACE WINDOW FOR STRUCTURAL INTEGRITY OF THE BUILDING
- 28 INCREASE WINDOW SIZE TO IMPROVE SOLAR ACCESS



01 SERVICED APARTMENT LEVEL 22-31 PLAN
1:200

02 RESIDENTIAL APARTMENTS - LEVEL 23,24,26,27 PLAN
1:200

F	SECTION 75W SUBMISSION	19.06.2014
E	Revised Modification 6	02.12.2013
D	S75W Modification 6	05.2013
C	Section 75W Submission	11.2012
B	EA Submission	18.12.09
A	submitted for Test of adequacy	09.11.09

Do not scale from drawings. Verify all dimensions on site before commencing work. Copying or the reproduction of this drawing is strictly prohibited without the consent of PTW Architects P/L.

Client
Meriton Group
Level 11 Meriton Tower,
528 Kent St,
Sydney NSW 2000

Architect
PTW Architects
Level 13, 9 Castlereagh St
Sydney NSW Australia 2000
T 612 9232 5877
F 612 9221 4139
www.ptw.com.au

Contractor

Consultants

Planner	-
Structural	-
Services	-
Landscape	-
Acoustics	-
Traffic	-

MERITON THOMAS STREET
Thomas Street/ Albert Avenue
Chatswood NSW 2067

Project No.	212007
Scale:	1:200@A1;1:400@A3
Date:	10/9/2009
Drawn	DH
Checked	EA
Approved	SP

