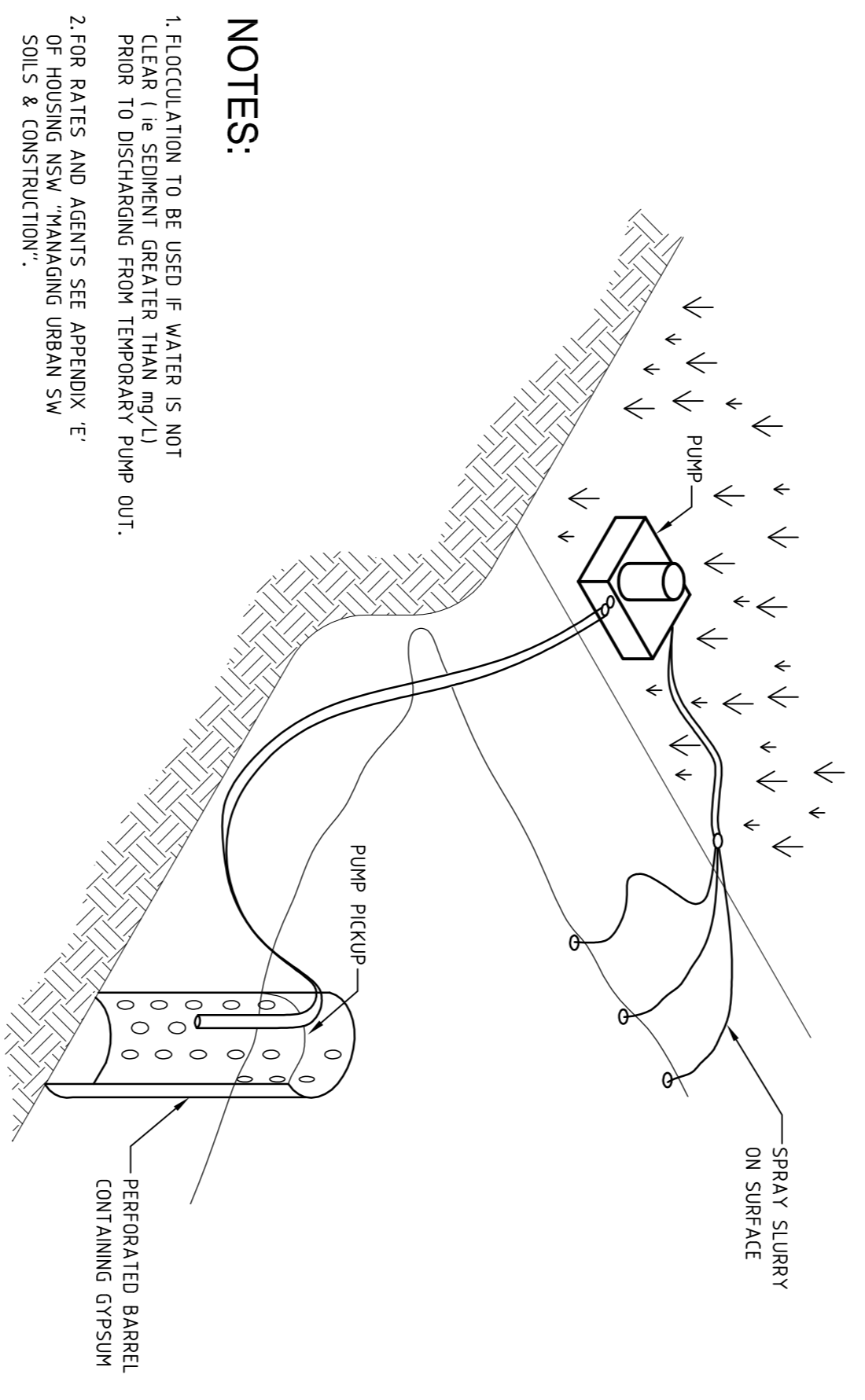
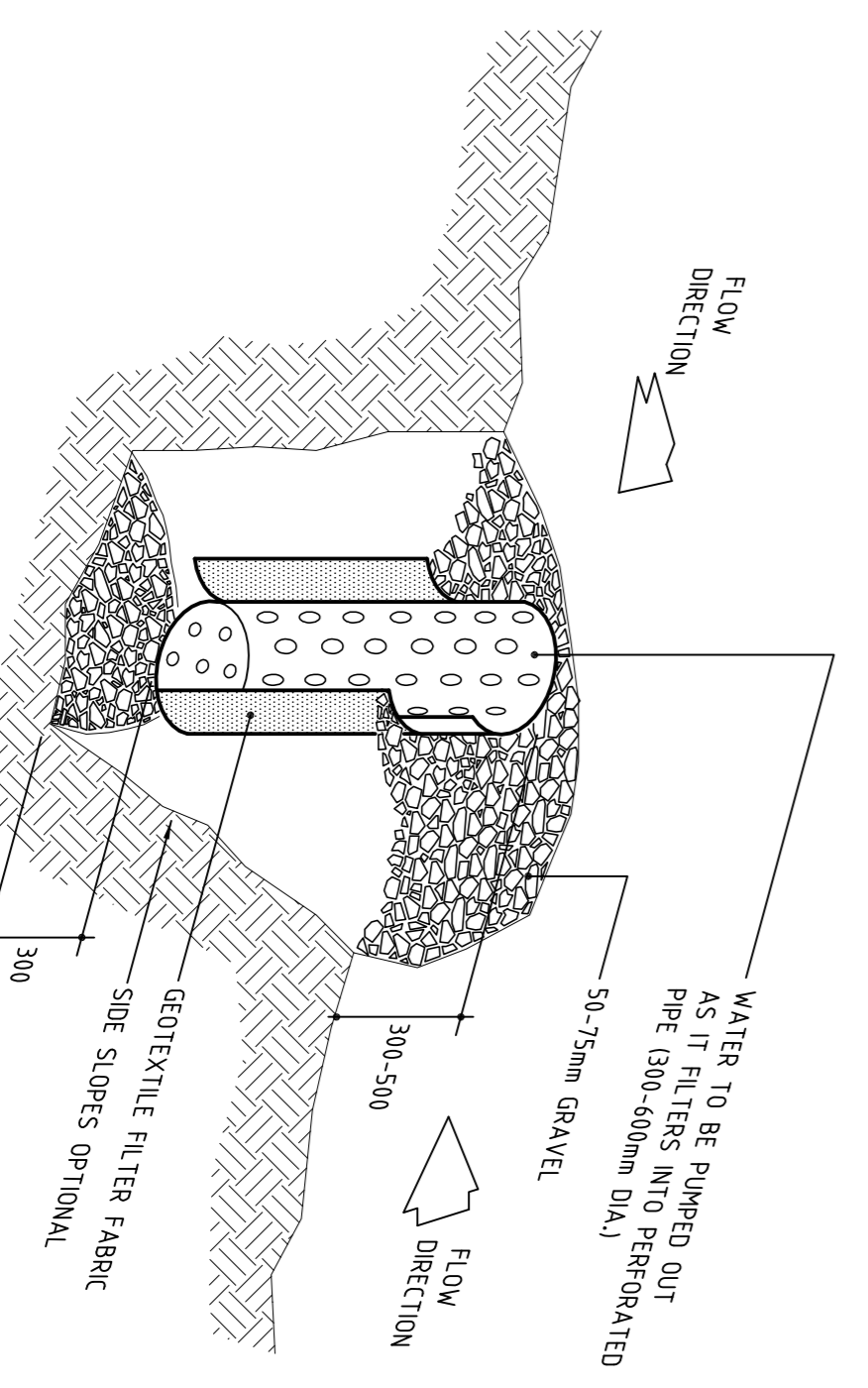


SUB-SOIL FLOOR CLEAROUT



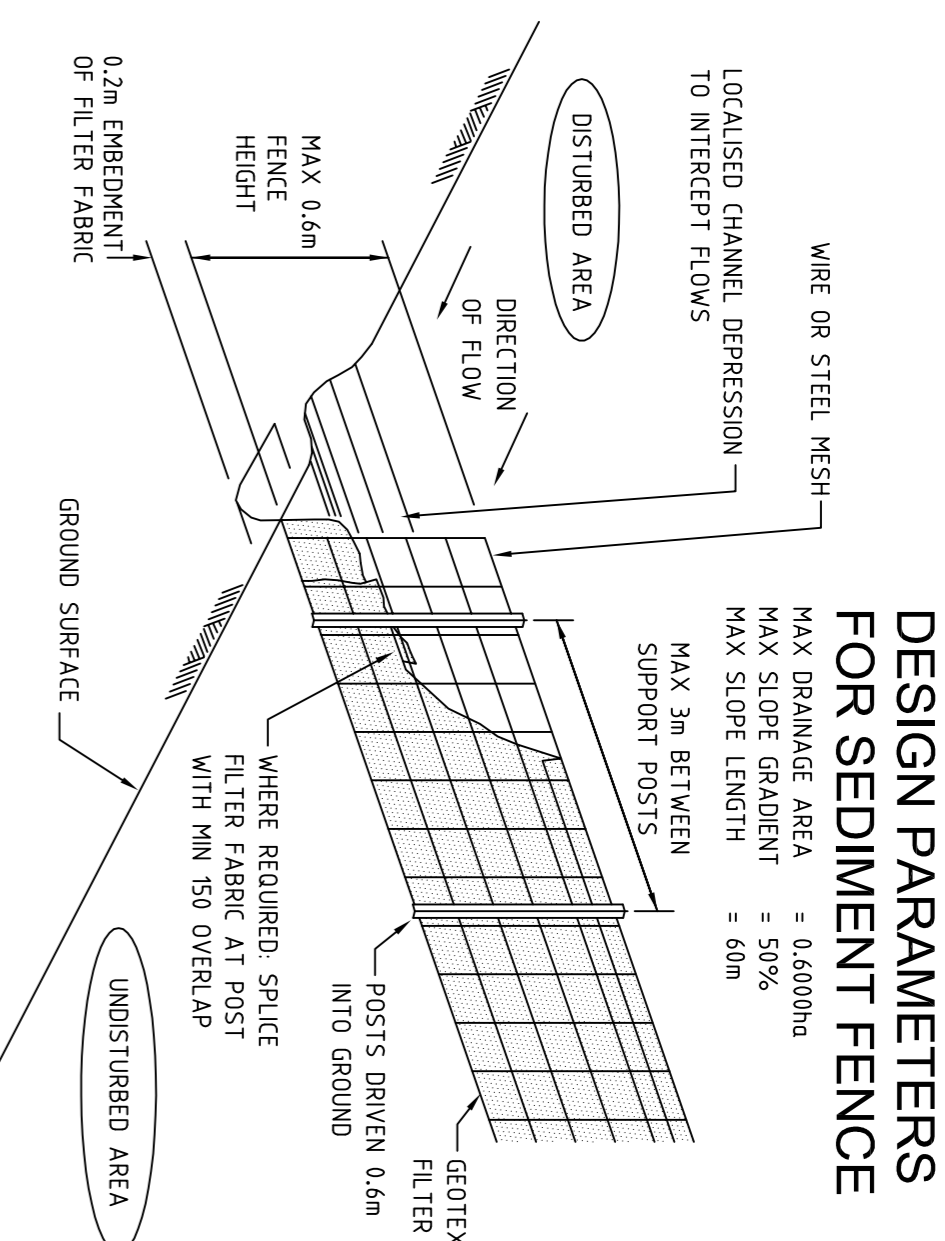
FLOCCULATION DETAIL

- NOTES:**
1. FLOCCULATION TO BE USED IF WATER IS NOT CLEAR (i.e. SEDIMENT GREATER THAN mg/L) PRIOR TO DISCHARGING FROM TEMPORARY PUMP OUT.
 2. FOR RATES AND AGENTS SEE APPENDIX 'E' OF HOUSING NSM "MANAGING URBAN SW SOILS & CONSTRUCTION".



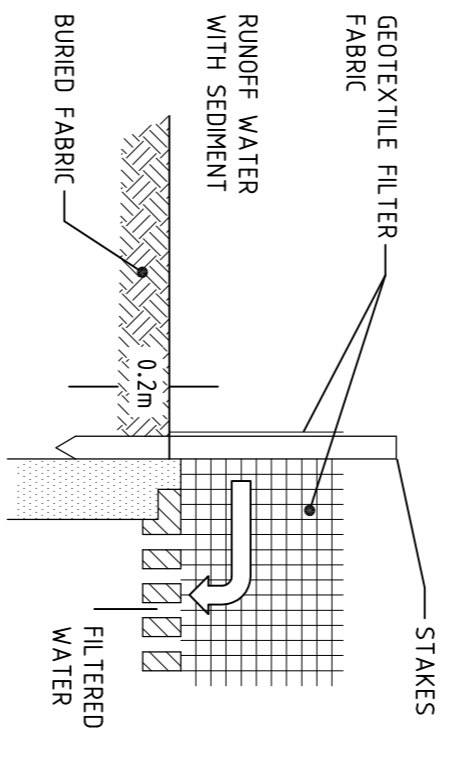
SUMP PIT SEDIMENT TRAP

- SOIL & WATER MANAGEMENT NOTES:**
1. REFER TO DETAIL D3 FOR CONSTRUCTION OF SEDIMENT FENCE.
 2. ALL PITS & PIPEWORK ASSOCIATED WITH PROPOSED DRAINAGE SYSTEMS SHALL BE KEPT FREE OF SOIL, WATER & DEBRIS FOR THE DURATION OF THE CONSTRUCTION WORKS.
 3. ALL LOOSE IMPURED FILL AND EXCAVATED MATERIAL SHALL BE STOCKPILED AS FAR AS POSSIBLE FROM SEDIMENT FENCES PRIOR TO FINAL PLACEMENT, COMPACTION OR REMOVAL FROM SITE.
 4. EXCESSIVE SEDIMENT BUILDUP SHALL BE AVOIDED BY REGULAR MAINTENANCE OF SEDIMENT FENCES.
 5. WHERE APPLICABLE, APPROVED LANDSCAPING & REVEGETATION OF DISTURBED AREAS SHALL COMMENCE AT THE EARLIEST OPPORTUNITY AFTER COMPLETION OF EARTHWORKS OPERATIONS.

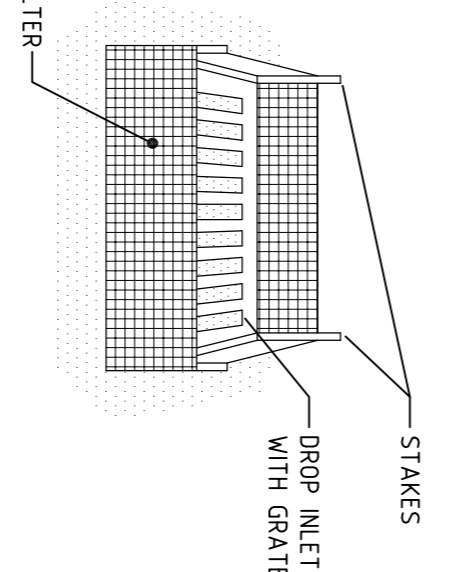


SEDIMENT FENCE

CONSTRUCTION OF SEDIMENT FENCE AND ANY OTHER SEDIMENT CONTROL MEASURES SHALL BE IN ACCORDANCE WITH THE URBAN EROSION AND SEDIMENT CONTROL HANDBOOK PUBLISHED BY THE DEPARTMENT OF CONSERVATION AND LAND MANAGEMENT (AVAILABLE FROM THE DEPARTMENT OF LAND AND WATER CONSERVATION)

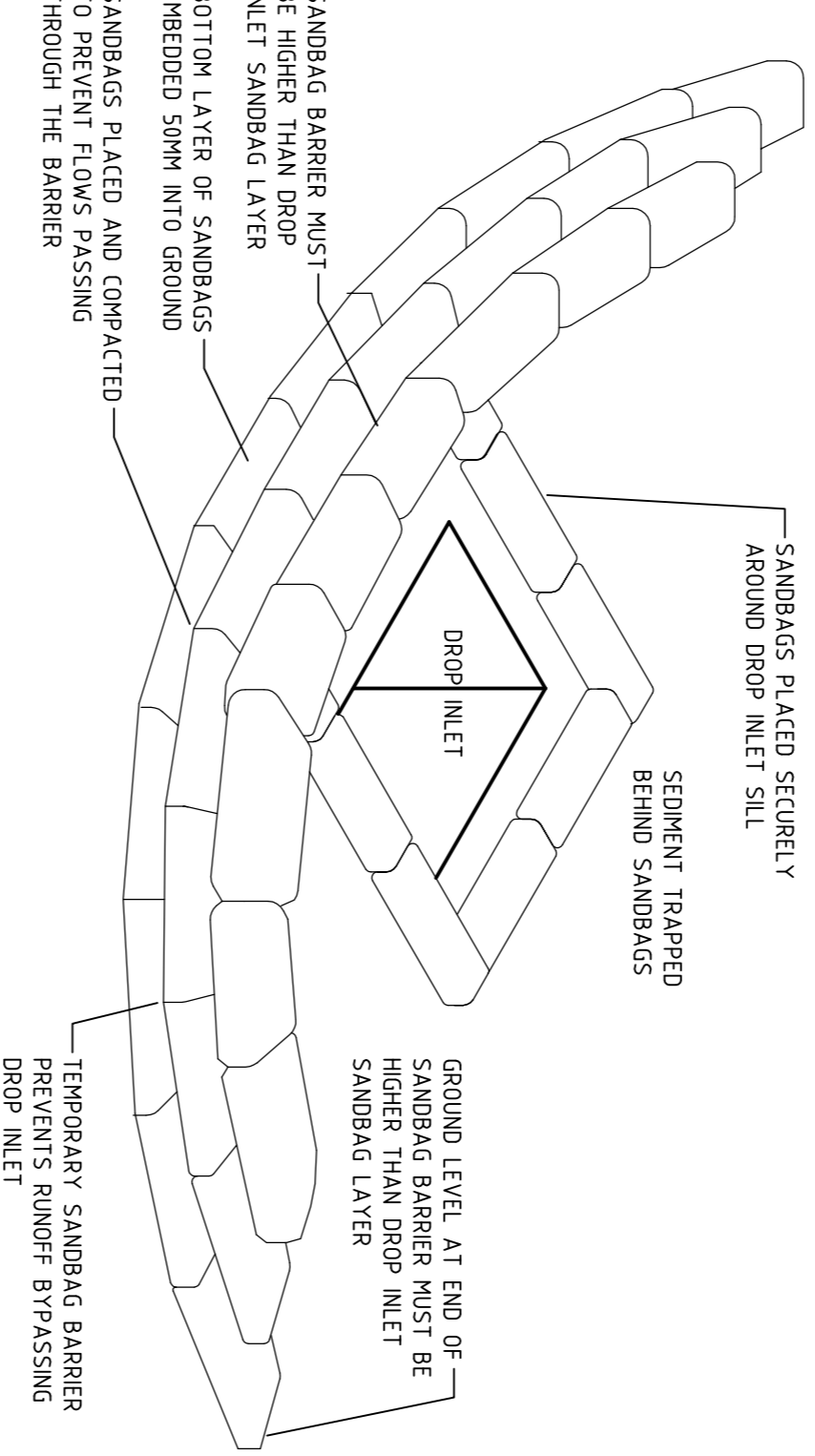


GEOTEXTILE FILTER FABRIC DROP INLET SEDIMENT TRAP



TYPICAL DETAIL OF A FILTER FENCE

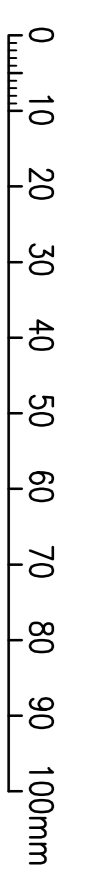
AROUND THE COLLECTION PITS WITH SUBVERSIBLE PUMP PUMP DISCHARGE TO DRAIN TO NEAREST STORMWATER GRATE DOWNSLOPE OF THE CONSTRUCTION ACTIVITY ADEQUATELY PROTECTED BY STAMBALES WRAPPED IN GEOTEXTILE FABRIC.



SANDBAG BARRIER DROP INLET

SEDIMENT RUN-OFF CONTROL NOTES:

1. ALL WORKS SHALL BE GENERALLY CARRIED OUT IN ACCORDANCE WITH
 - A. LOCAL AUTHORITY REQUIREMENTS.
 - B. EPA - POLLUTION CONTROL MANUAL FOR URBAN STORMWATER.
 - C. DEPARTMENT OF CONSERVATION AND LAND MANAGEMENT MANUAL-"URBAN EROSION & SEDIMENT CONTROL".
2. EROSION & SEDIMENT CONTROL DRAWINGS NOTES ARE PROVIDED FOR THE WHOLE OF THE WORKS, SHOULD THE CONTRACTOR STAGE THESE WORKS THEN THE DESIGN MAY REQUIRE TO BE MODIFIED, VARIATION TO THESE DETAILS MAY REQUIRE TO BE APPROVED BY THE RELEVANT AUTHORITIES.
3. MAINTAIN ALL EROSION AND SEDIMENT CONTROL DEVICES TO THE SATISFACTION OF THE SUPERINTENDENT AND THE LOCAL AUTHORITY.
4. WHEN STORMWATER PITS ARE CONSTRUCTED PREVENT SITE RUNOFF ENTERING THE PITS UNLESS SILT FENCES ARE ERECTED AROUND PITS.
5. MINIMISE THE AREA OF THE SITE BEING DISTURBED AT ANY ONE MOMENT.
6. PROTECT ALL STOCKPILES OF MATERIALS FROM SCOUR & EROSION, DO NOT STOCKPILE LOOSE MATERIAL IN ROADWAYS, NEAR DRAINAGE PITS OR WATER WATERCOURSES.
7. ALL SOIL AND WATER CONTROL MEASURES ARE TO BE PUT BACK IN PLACE AT THE END OF EACH WORKING DAY, AND MODIFIED TO BEST SUIT SITE CONDITIONS.
8. CONTROL WATER FROM UPSTREAM OF THE SITE SUCH THAT IT DOES NOT ENTER THE DISTURBED AREA.
9. ALL CONSTRUCTION VEHICLES SHALL ENTER & EXIT THE SITE VIA THE TEMPORARY CONSTRUCTION ENTRY/EXIT.
10. ALL VEHICLES LEAVING THE SITE SHALL BE CLEANED AND INSPECTED BEFORE LEAVING.
11. CLEAN OUT ALL EROSION AND SEDIMENT CONTROL DEVICES AFTER EACH STORM EVENT.
12. HOSE TAPS TO BE FITTED WITH BACK FLOW PREVENTION IN ACCORDANCE WITH AS3500.



NOTES:

REV	DESCRIPTION	DRN	DATE	CHKD
P1	PRELIMINARY ISSUE	DR	28.10.09	JA

Welles Thomas Pty Ltd
 Suite 22, Level 4
 12 Thomas Street
 Chatswood NSW 2067

PTW Architects
 Level 17, 9 Castlereagh St
 Sydney NSW Australia 2000
 T 612 9232 5877
 F 612 9221 4139
 www.ptw.com.au

WELLES THOMAS PLAZA
 Thomas Street/ Albert Avenue
 Chatswood NSW 2067

GEORGE FLOTH PTY. LIMITED
 CONSULTING ENGINEERS

LEVEL 11, TOWER ONE
 CHATSWOOD NSW 2067 AUSTRALIA
 T: 61-2-9419 4100
 E: info@geflth.com.au
 W: www.geflth.com.au

HYDRAULIC SERVICES

DETAIL SHEET 4

NO.	DATE	BY	CHECKED	DATE	BY
DR		JA			
AS SHOWN @ A1					
S09083	H11	P1			