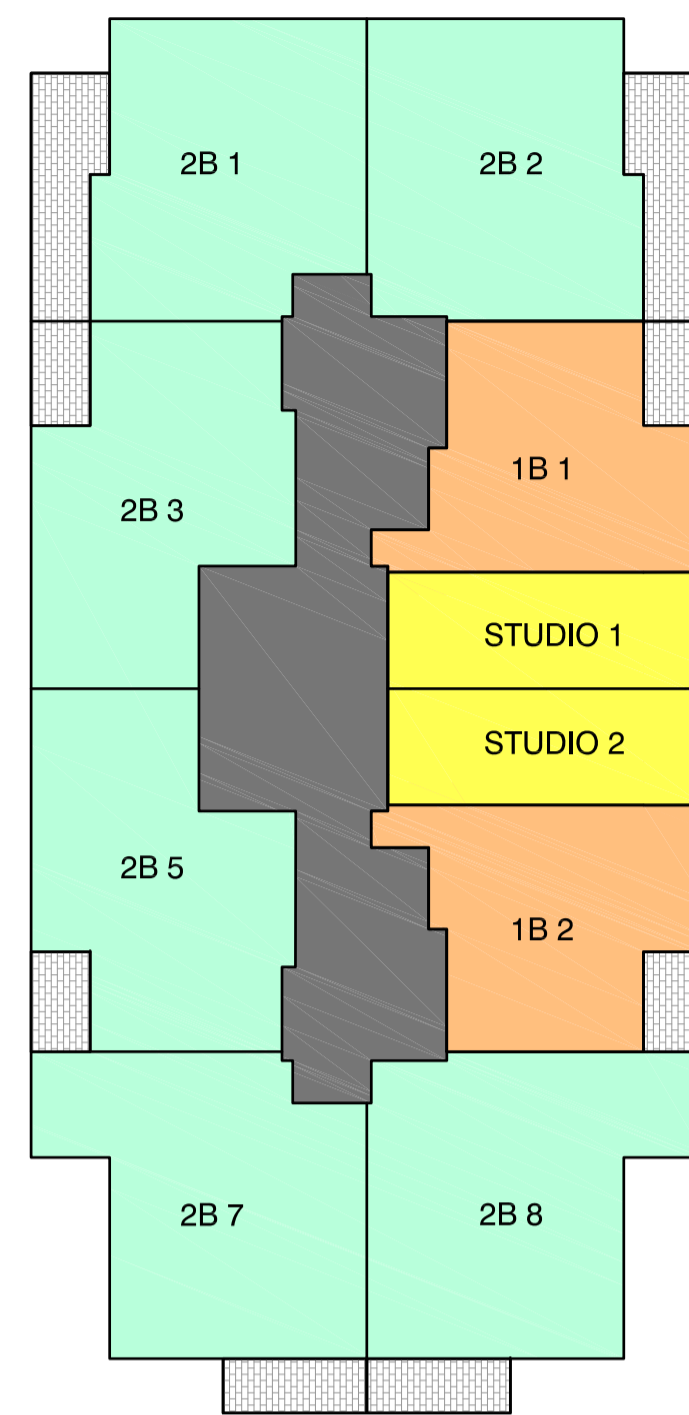
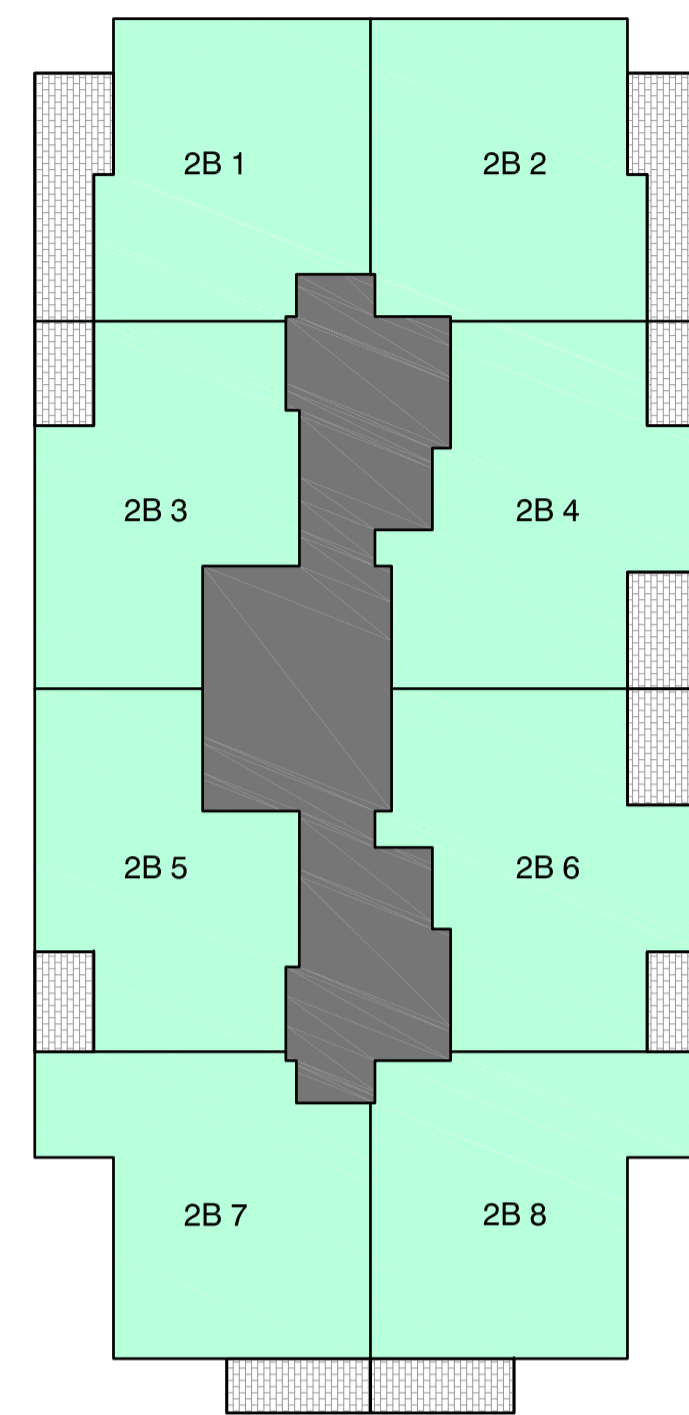


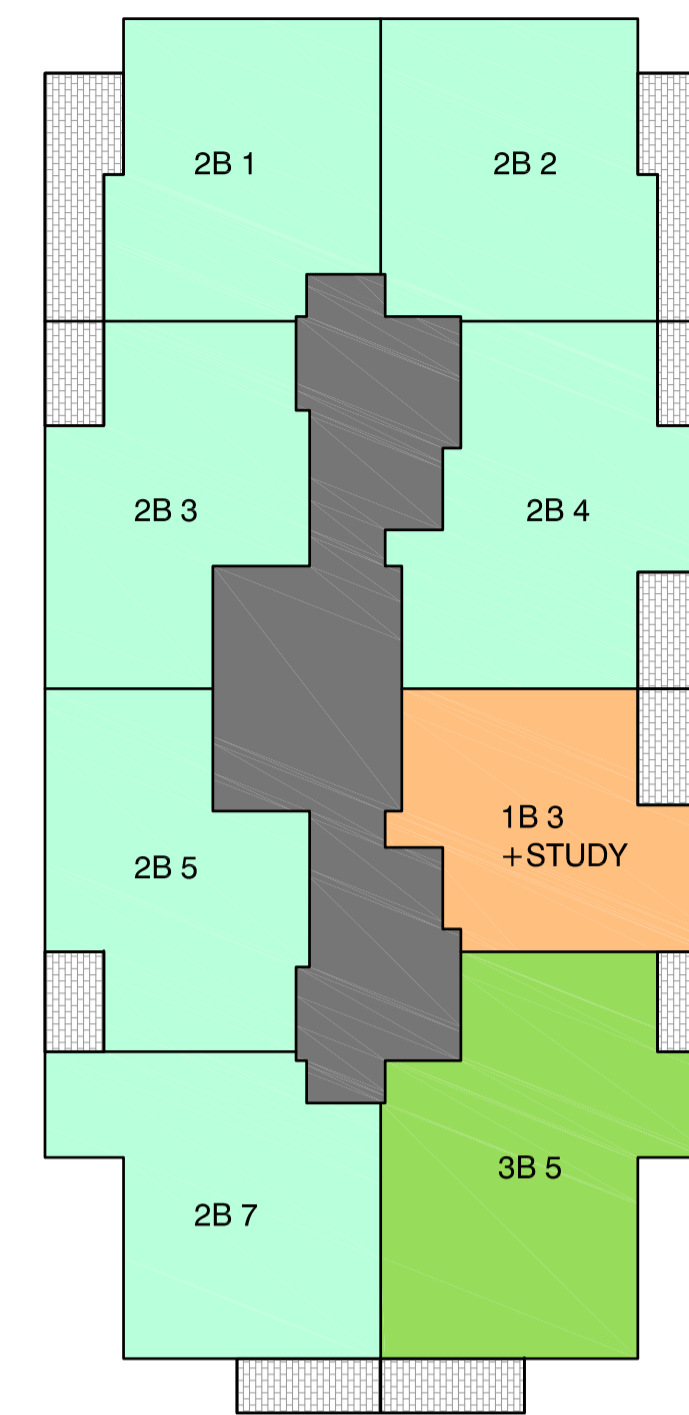
LEVEL 3~6



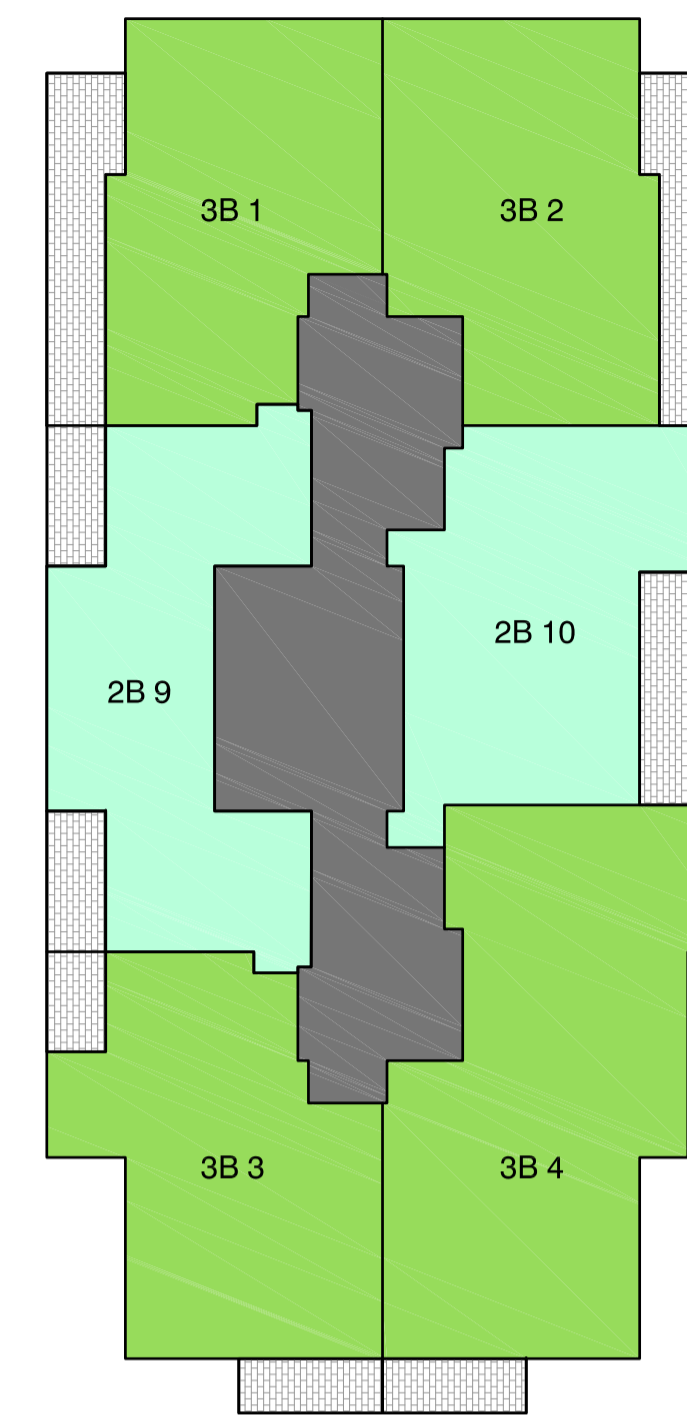
LEVEL 7~10



LEVEL 11~18



LEVEL 19~20



LEVEL 21~28

**WELLES THOMAS PLAZA**  
Schedule of Residential Mix

Level	Apartments					
	Studio	1 Bed	1 Bed+S	2 Bed	2B Dual	3 Bed
3	2	2		4	2	
4	2	2		4	2	
5	2	2		4	2	
6	2	2		4	2	
7	2	2		6		
8	2	2		6		
9	2	2		6		
10	2	2		6		
11				8		
12				8		
13				8		
14				8		
15				8		
16				8		
17				8		
18				8		
19			1	6		1
20			1	6		1
21				2		4
22				2		4
23				2		4
24				2		4
25				2		4
26				2		4
27				2		4
28				2		4
<b>Sub Total</b>	<b>16</b>	<b>16</b>	<b>2</b>	<b>132</b>	<b>8</b>	<b>34</b>
<b>Sub Total - FSR</b>						
<b>%</b>	<b>8%</b>	<b>8%</b>	<b>1%</b>	<b>63%</b>	<b>4%</b>	<b>16%</b>
<b>Total Apartments</b>	<b>208</b>					

Building 1 - Thomas Street Tower  
Building 2 - Albert Avenue Tower

B EA Submission 18.12.09  
A Submitted for Test of Adequacy 09.11.09

Do not scale from drawings. Verify all dimensions on site before commencing work. Copying or the reproduction of this drawing is strictly prohibited without the consent of PTW Architects P/L.

Client  
Welles Thomas Pty Ltd  
Suite 22, Level 4  
12 Thomas Street  
Chatswood NSW 2067

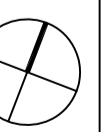
Architect  
**PTW**  
PTW Architects  
Level 17, 9 Castlereagh St  
Sydney NSW Australia 2000  
T 612 9232 5877  
F 612 9221 4139  
www.ptw.com.au

Contractor

Consultants  
Planner JBA Planning  
Structural Birzulis Associates  
Services George Floth Pty. Ltd  
Landscape Site Image  
Acoustics Acoustic Logic  
Traffic TTPA

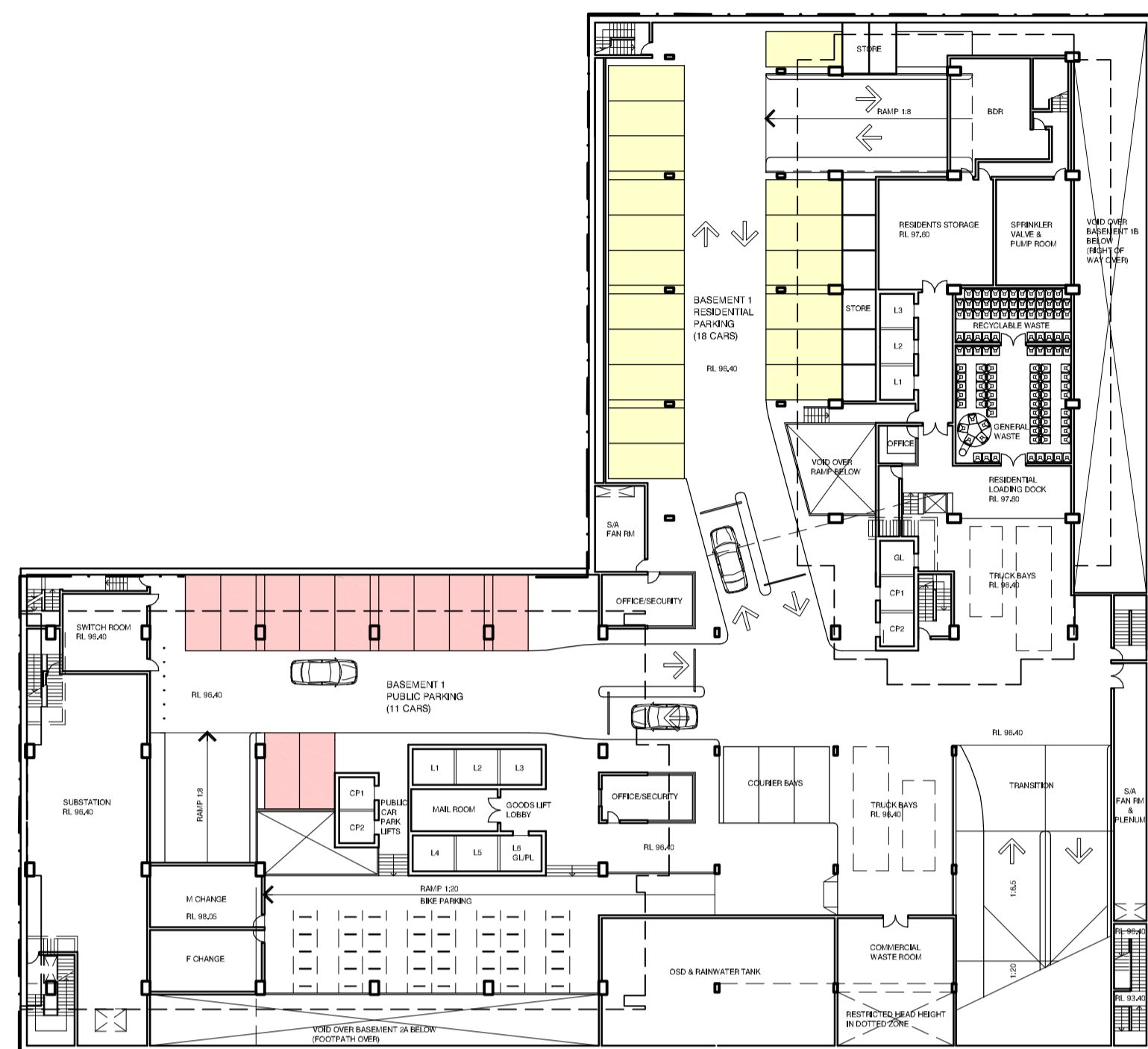
**WELLES THOMAS PLAZA**  
Thomas Street/ Albert Avenue  
Chatswood NSW 2067

Project No. 209039  
Scale: NTS  
Date: 10/9/2009  
Drawn AL  
Checked -  
Approved

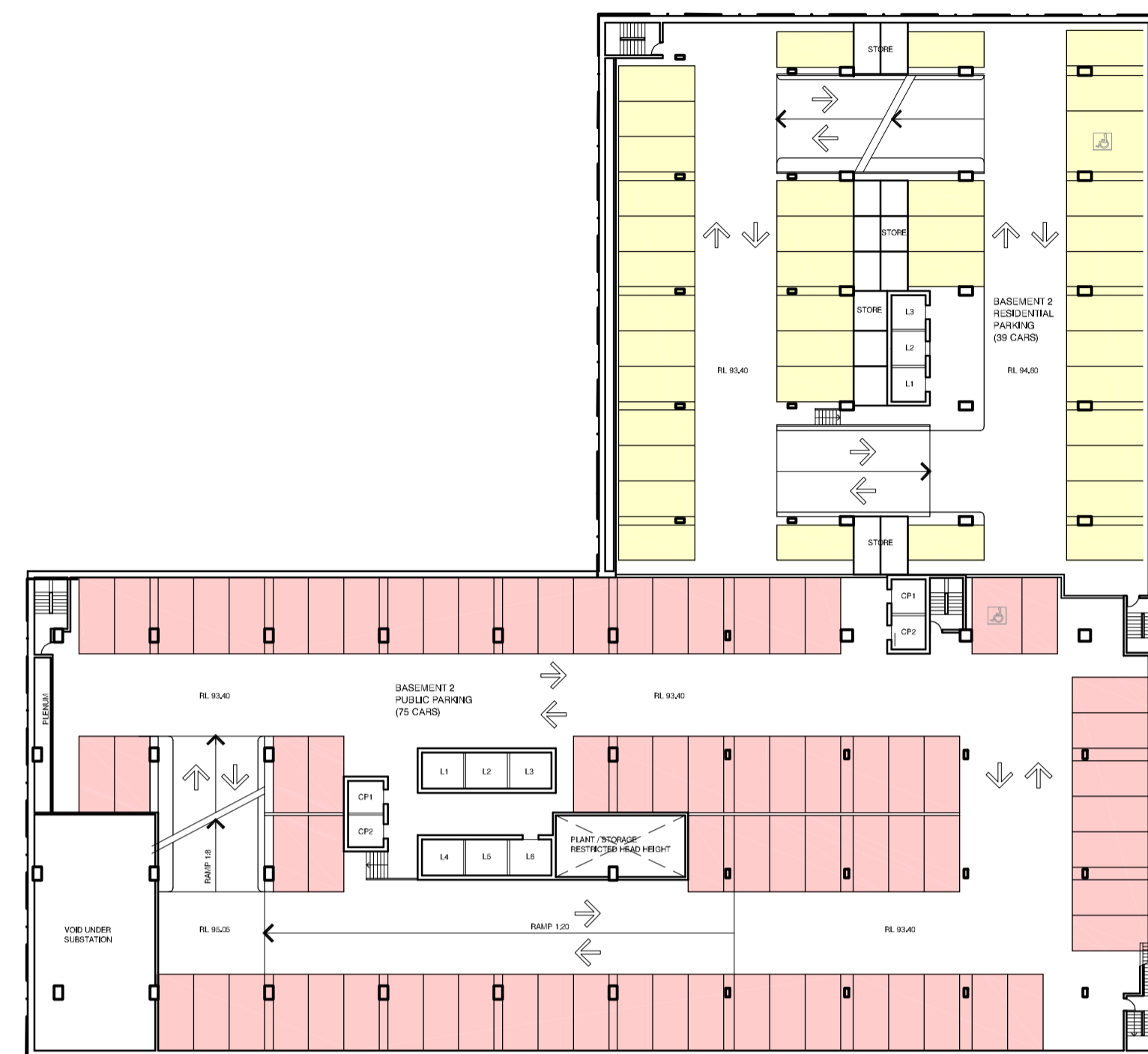


SCHEDULE OF APARTMENTS

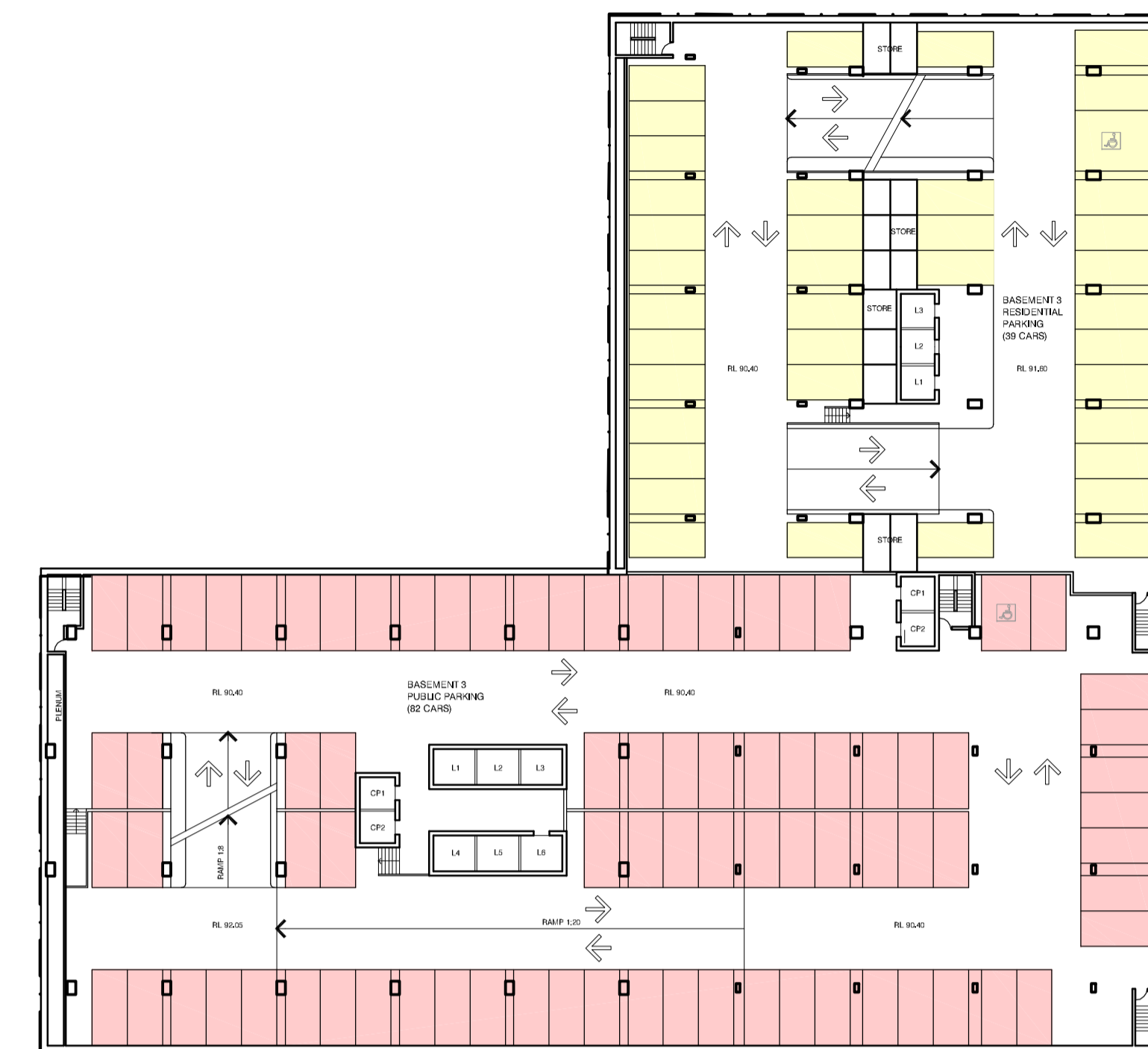
A-0151 /B  
PRELIMINARY



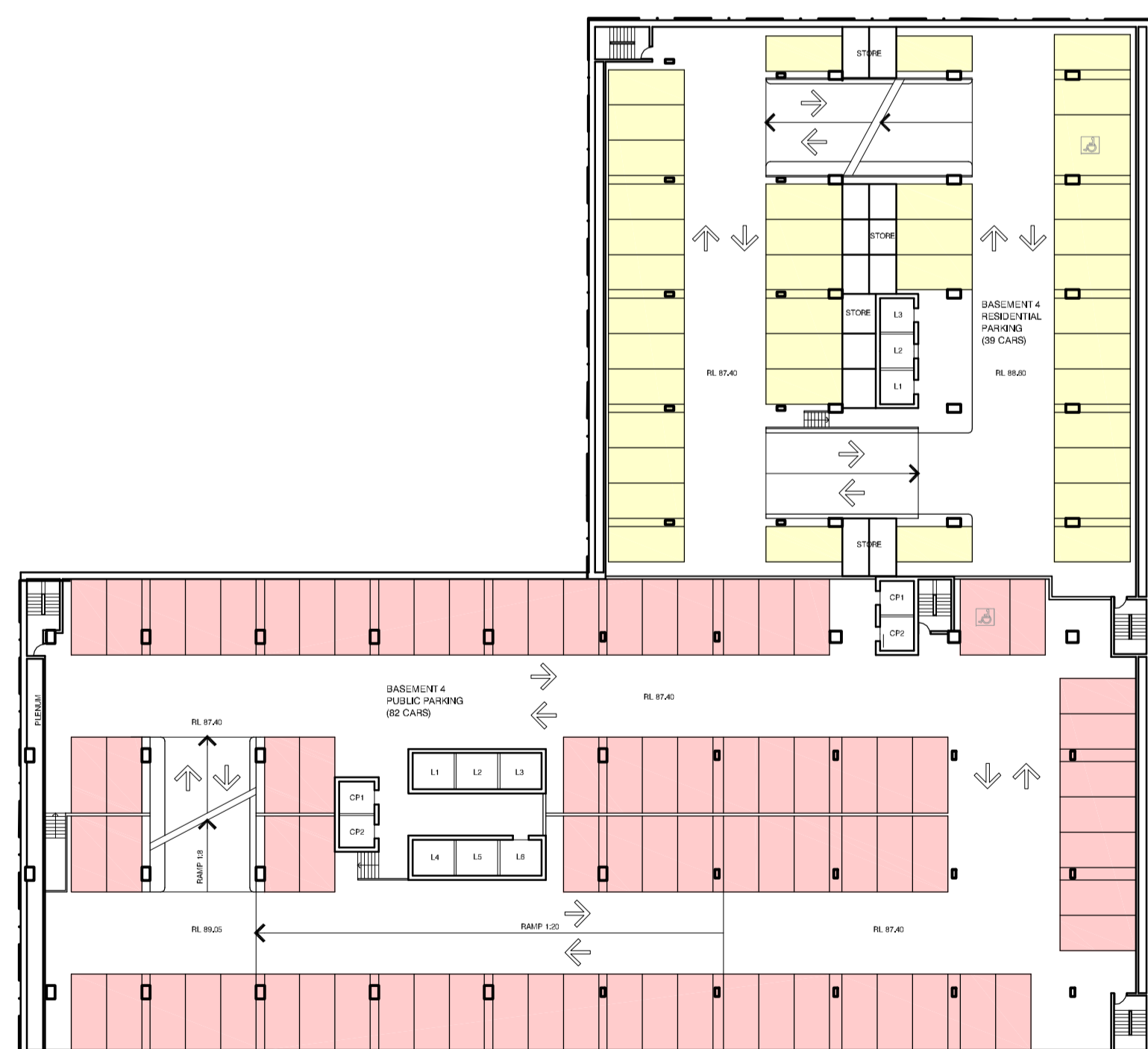
BASEMENT 1



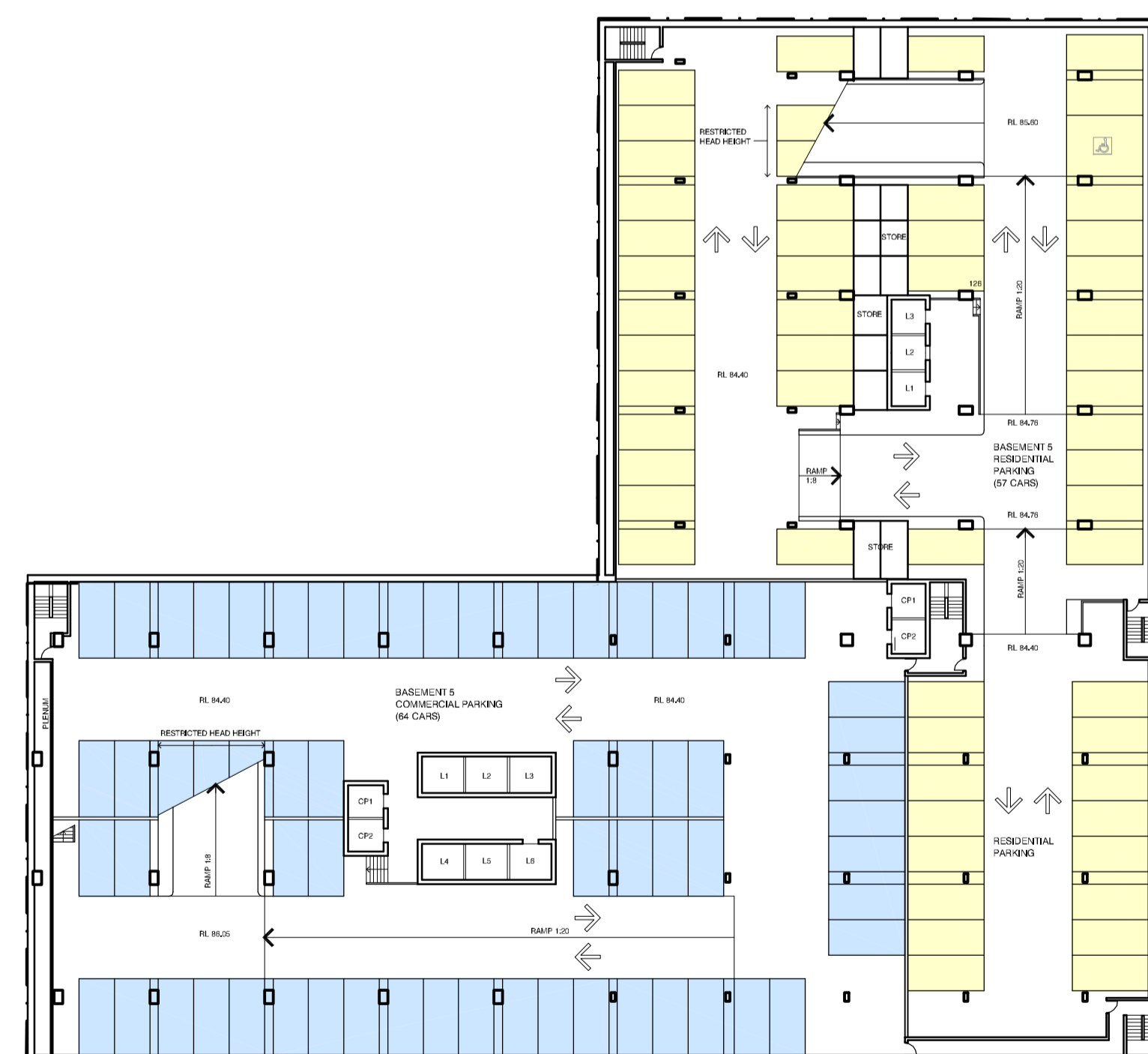
BASEMENT 2



BASEMENT 3



BASEMENT 4



BASEMENT 5

PARKING SCHEDULE

	PUBLIC	RESIDENTIAL	COMMERCIAL	TOTAL
B1	11	18	-	29
B2	75	39	-	114
B3	82	39	-	121
B4	82	39	-	121
B5	-	57	64	121
TOTAL	250	192	64	506

B EA Submission 18.12.09  
 A Submitted for Test of Adequacy 09.11.09

Do not scale from drawings. Verify all dimensions on site before commencing work. Copying or the reproduction of this drawing is strictly prohibited without the consent of PTW Architects P/L.

Client  
 Welles Thomas Pty Ltd  
 Suite 22, Level 4  
 12 Thomas Street  
 Chatswood NSW 2067

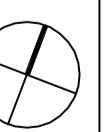
Architect  
 PTW Architects **PTW**  
 Level 17, 9 Castlereagh St  
 Sydney NSW Australia 2000  
 T 612 9232 5877  
 F 612 9221 4139  
 www.ptw.com.au

Contractor

Consultants  
 Planner JBA Planning  
 Structural Birzulis Associates  
 Services George Floth Pty. Ltd  
 Landscape Site Image  
 Acoustics Acoustic Logic  
 Traffic TTPA

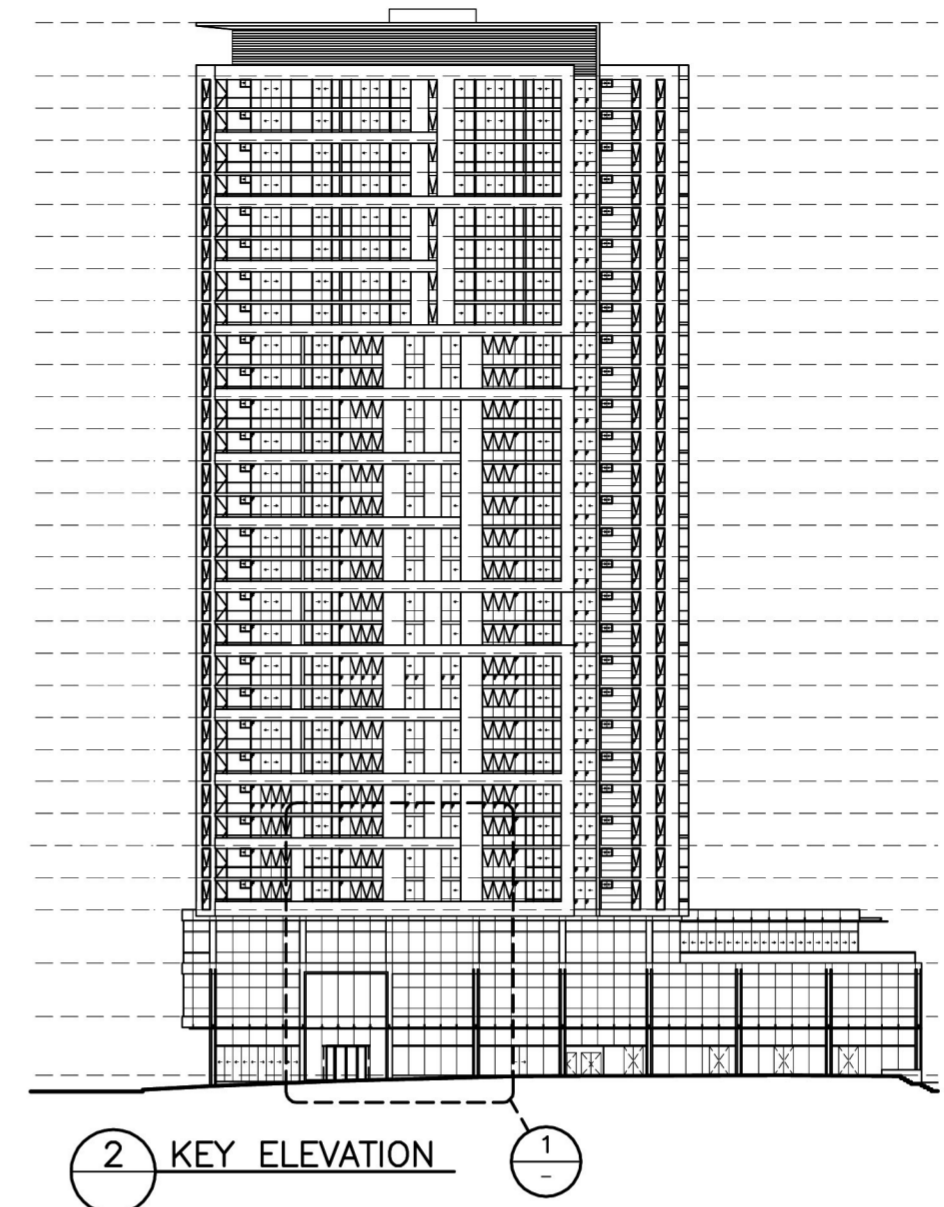
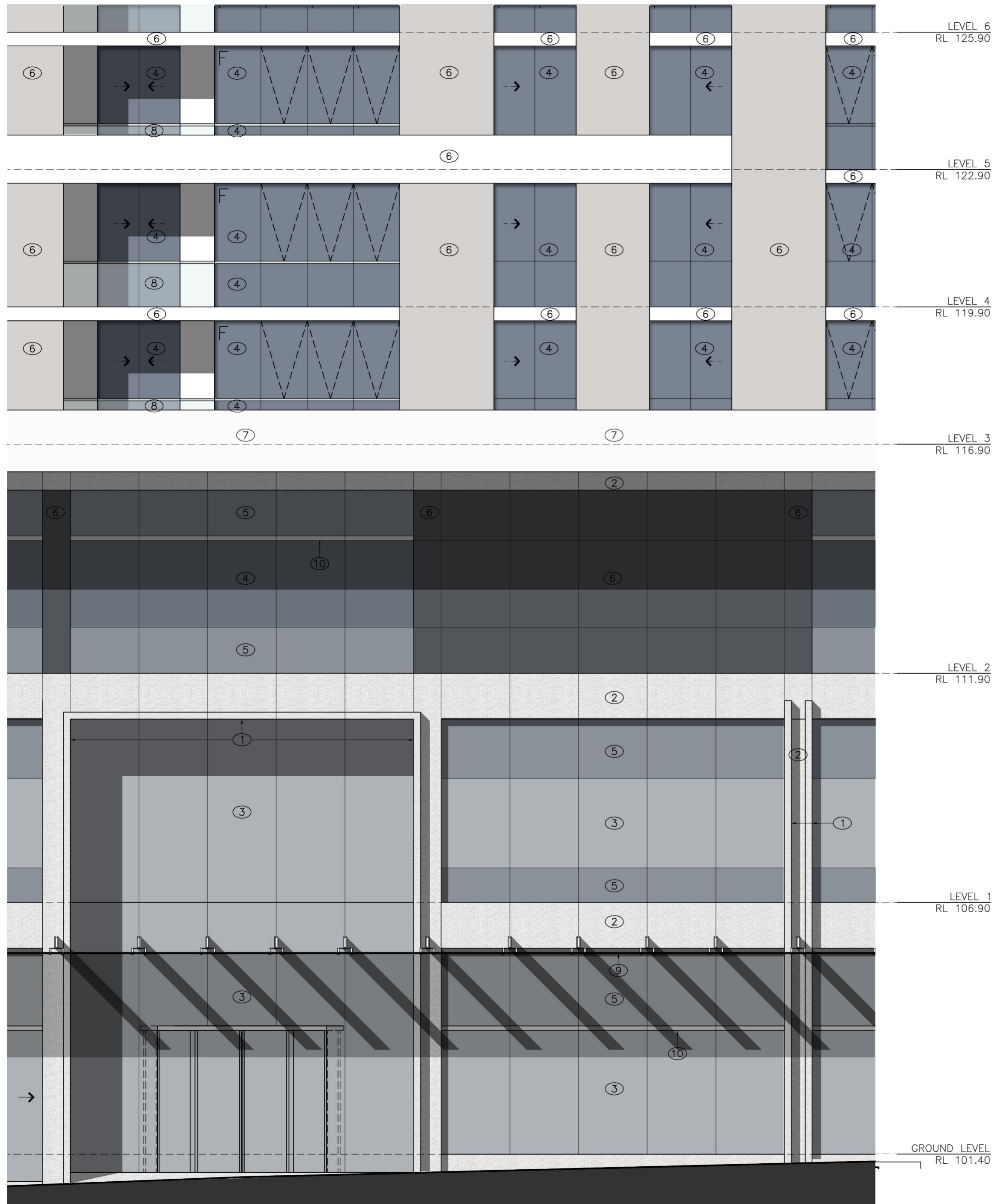
**WELLES THOMAS PLAZA**  
 Thomas Street/ Albert Avenue  
 Chatswood NSW 2067

Project No. 209039  
 Scale: NTS  
 Date: 10/9/2009  
 Drawn: DH  
 Checked: -  
 Approved: -



SCHEDULE OF CAR PARKING

A-0152 /B  
 PRELIMINARY



- LEGEND:**
- ① POLISHED GRANITE
  - ② EXFOLIATED GRANITE
  - ③ CLEAR VISION GLASS
  - ④ GREY TINTED GLAZING
  - ⑤ SPANDREL GLASS
  - ⑥ DARK GREY ALUMINIUM FACADE PANEL
  - ⑦ COMPOSITE ALUMINIUM FACADE PANEL
  - ⑧ CLEAR GLAZED BALUSTRADE/ STAINLESS STEEL HANDRAIL
  - ⑨ FRAMELESS FRITTED GLASS AND STAINLESS STEEL AWNING
  - ⑩ ALUMINIUM TRANSOM
  - ⑪ ALUMINIUM LOUVERS

① BUILDING 1 FACADE FINISHES  
1:50 (WEST ELEVATION)

B EA Submission 18.12.09  
A Submitted for Test of Adequacy 09.11.09

Do not scale from drawings. Verify all dimensions on site before commencing work. Copying or the reproduction of this drawing is strictly prohibited without the consent of PTW Architects P/L.

Client  
Welles Thomas Pty Ltd  
Suite 22, Level 4  
12 Thomas Street  
Chatswood NSW 2067

Architect  
**PTW**  
PTW Architects  
Level 17, 9 Castlereagh St  
Sydney NSW Australia 2000  
T 612 9232 5877  
F 612 9221 4139  
www.ptw.com.au

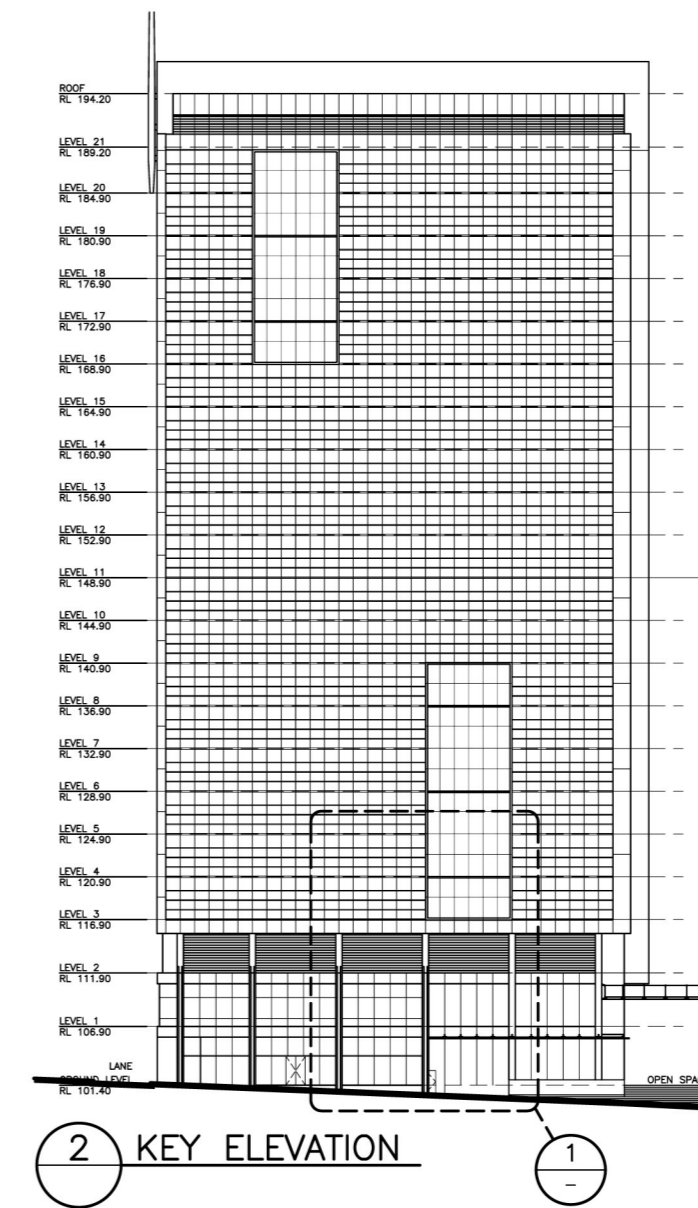
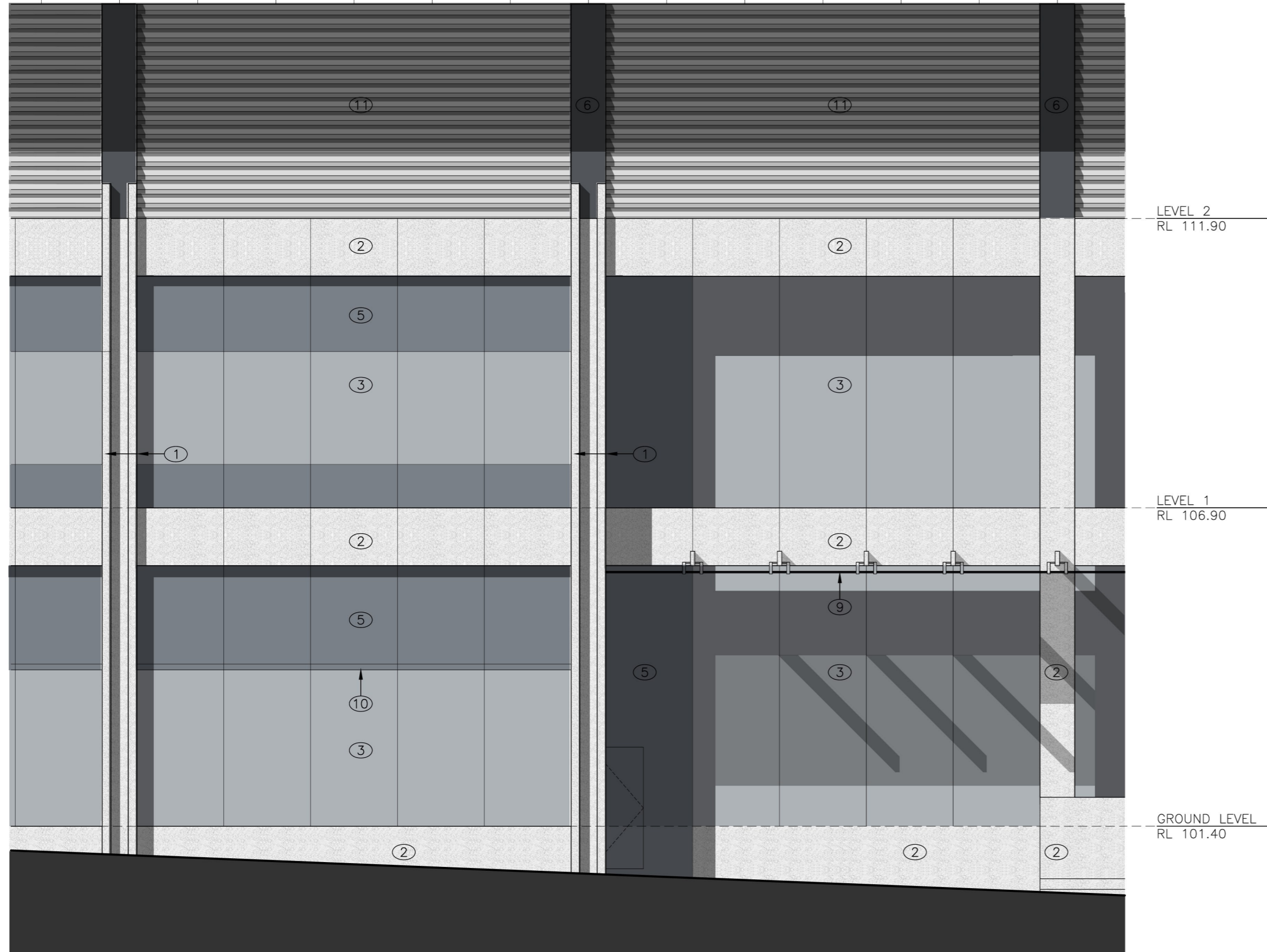
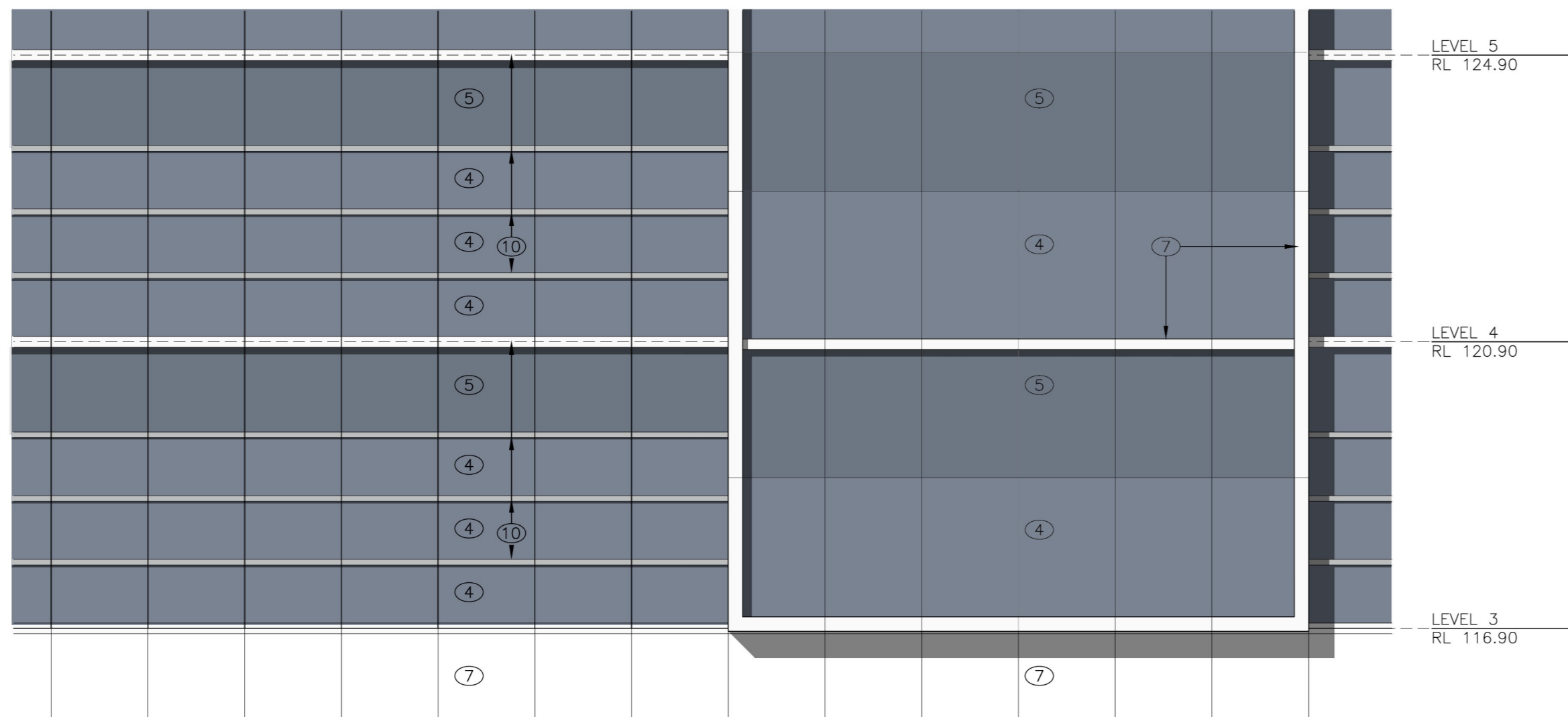
Contractor

Consultants  
Planner JBA Planning  
Structural Birzulis Associates  
Services George Floth Pty. Ltd  
Landscape Site Image  
Acoustics Acoustic Logic  
Traffic TTPA

**WELLES THOMAS PLAZA**  
Thomas Street/ Albert Avenue  
Chatswood NSW 2067

Project No. 209039  
Scale:@A1 1:50@A1:1:100@A3  
Date: 10/9/2009  
Drawn AL  
Checked -  
Approved

BUILDING 1  
FACADE FINISHES  
A-0181 /B  
PRELIMINARY



- LEGEND:**
- ① POLISHED GRANITE
  - ② EXFOLIATED GRANITE
  - ③ CLEAR VISION GLASS
  - ④ GREY TINTED GLAZING
  - ⑤ SPANDREL GLASS
  - ⑥ DARK GREY ALUMINIUM FACADE PANEL
  - ⑦ COMPOSITE ALUMINIUM FACADE PANEL
  - ⑧ CLEAR GLAZED BALUSTRADE/ STAINLESS STEEL HANDRAIL
  - ⑨ FRAMLESS FRITTED GLASS AND STAINLESS STEEL AWNING
  - ⑩ ALUMINIUM TRANSOM
  - ⑪ ALUMINIUM LOUVERS

**1 BUILDING 2 FACADE FINISHES**  
1:50 (SOUTH ELEVATION)

B EA Submission 18.12.09  
A Submitted for Test of Adequacy 09.11.09

Do not scale from drawings. Verify all dimensions on site before commencing work. Copying or the reproduction of this drawing is strictly prohibited without the consent of PTW Architects P/L.

Client  
Welles Thomas Pty Ltd  
Suite 22, Level 4  
12 Thomas Street  
Chatswood NSW 2067

Architect  
**PTW**  
PTW Architects  
Level 17, 9 Castlereagh St  
Sydney NSW Australia 2000  
T 612 9232 5877  
F 612 9221 4139  
www.ptw.com.au

Contractor

Consultants  
Planner JBA Planning  
Structural Birzulis Associates  
Services George Floth Pty. Ltd  
Landscape Site Image  
Acoustics Acoustic Logic  
Traffic TTPA

**WELLES THOMAS PLAZA**  
Thomas Street/ Albert Avenue  
Chatswood NSW 2067

Project No. 209039  
Scale: 1:50@A1;1:100@A3  
Date: 10/9/2009  
Drawn AL  
Checked -  
Approved

BUILDING 2  
FACADE FINISHES  
A-0182 /B  
PRELIMINARY