



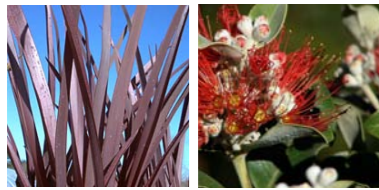
Decorative gravel areas



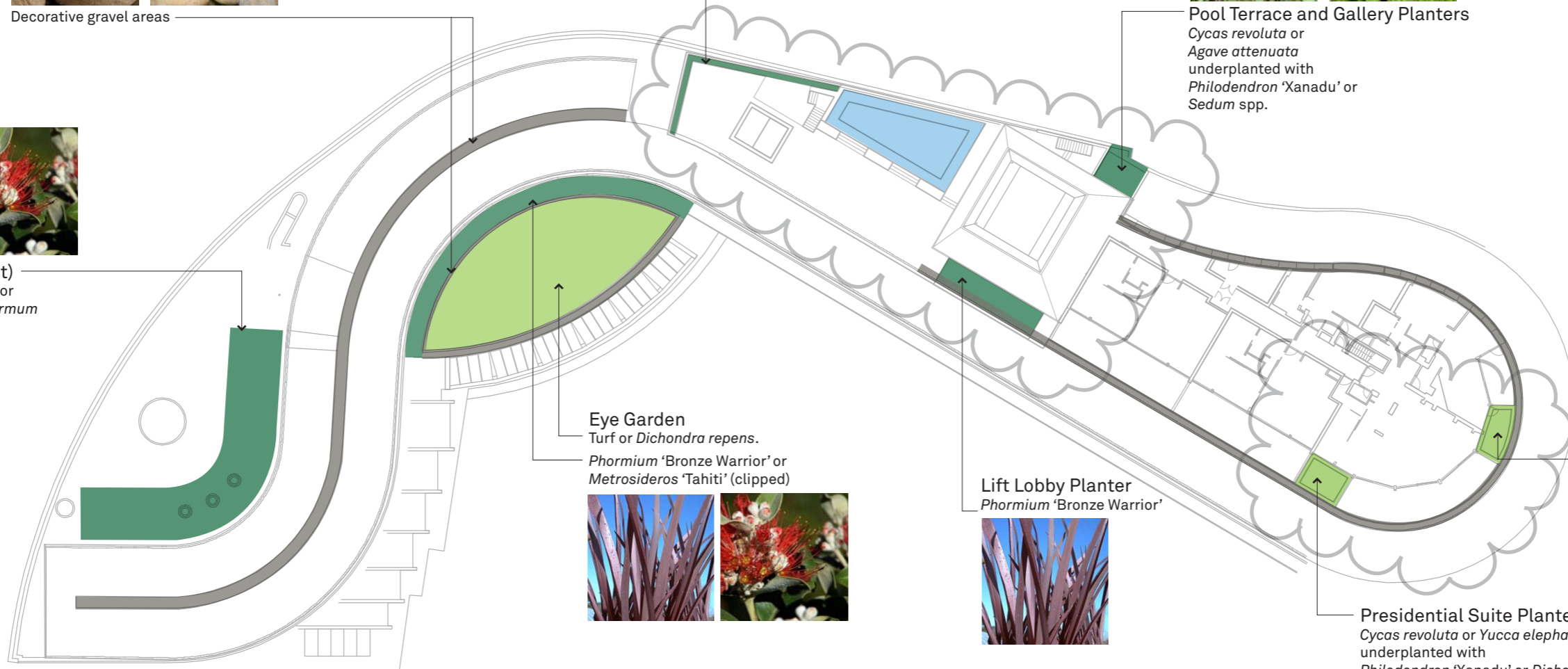
Pool Terrace Planter  
*Phormium 'Bronze Warrior'* or  
*Metrosideros 'Tahiti'* (clipped)



Pool Terrace and Gallery Planters  
*Cycas revoluta* or  
*Agave attenuata*  
 underplanted with  
*Philodendron 'Xanadu'* or  
*Sedum spp.*



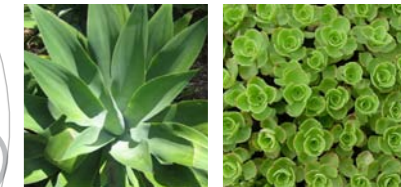
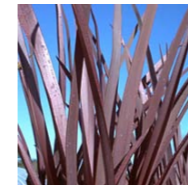
Roof Top Planter (West)  
*Phormium 'Bronze Warrior'* or  
 retain existing *Trachelospermum  
 jasminoides*



Eye Garden  
 Turf or *Dichondra repens*.  
*Phormium 'Bronze Warrior'* or  
*Metrosideros 'Tahiti'* (clipped)



Lift Lobby Planter  
*Phormium 'Bronze Warrior'*



Presidential Suite Planter  
*Agave attenuata*  
 underplanted with  
*Sedum spp.*

Presidential Suite Planter  
*Cycas revoluta* or *Yucca elephantipes*  
 underplanted with  
*Philodendron 'Xanadu'* or *Dichondra repens*.



Note:  
 \_All beds mulched with decorative gravel.  
 \_Any unproven plant species should be tested on site prior  
 to mass planting.  
 \_Waterproofing and subsoil drainage connections to  
 existing stormwater for all new planter beds.

**PARK HYATT  
 LANDSCAPE CONCEPT\_**



Revision  
 DA Submission

Date  
 14 December 2010

Scale  
 1:500@A3

Client  
 Daisho Development Sydney Pty Ltd

Project Name  
 Park Hyatt Sydney

Drawing  
 SKL-103\_REV B