

The existing landscape, whilst in some locations is mature and functional, lacks unity, refinement and simplicity. There is no real current "thread" or planting structure to provide a cohesive overall landscape theme.

create an improved structure...

By defining a series of clear "character zones" to respond directly to the different functional uses across the hotel.

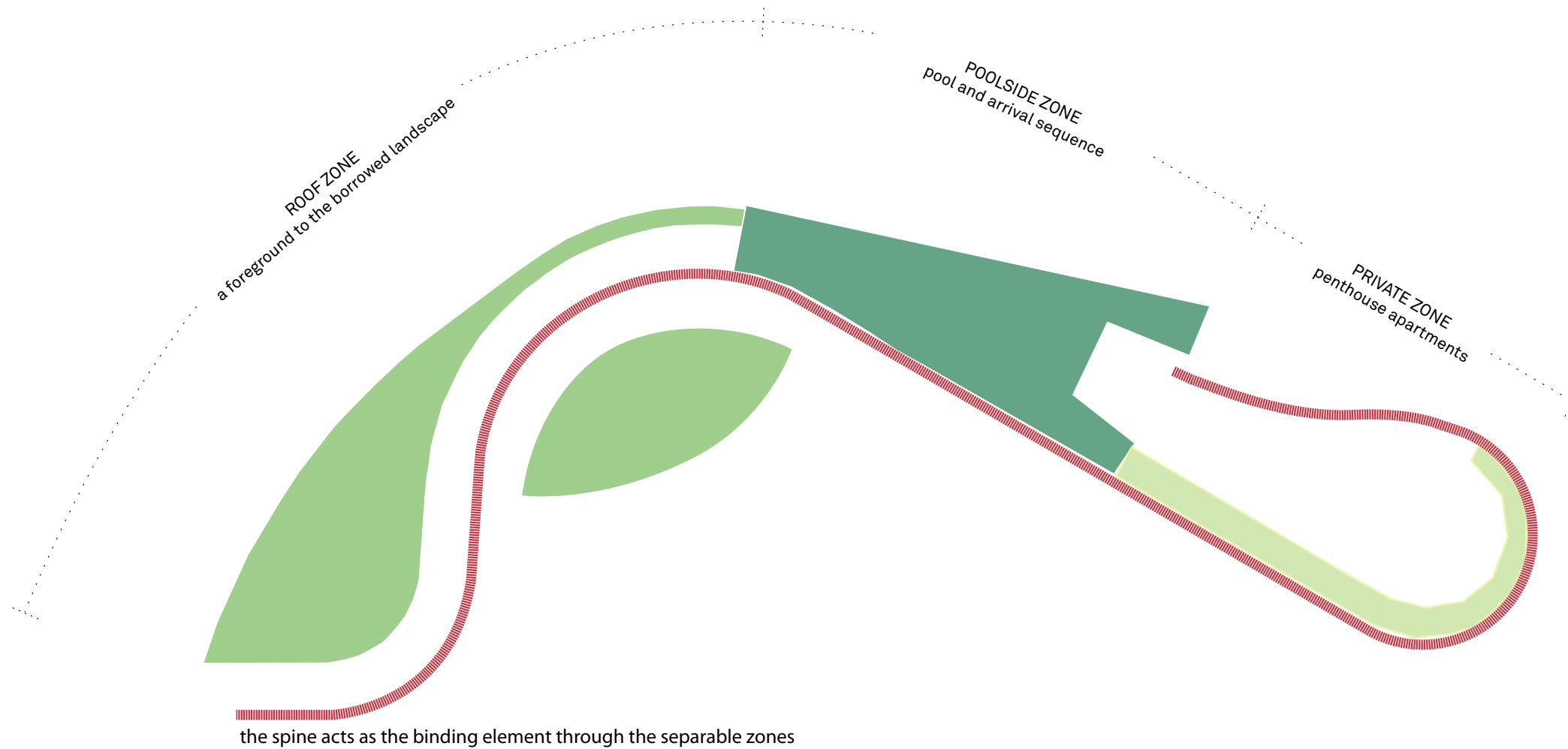
The character zones take maximum opportunity to strengthen the hotels "green volume" and are described as follows:

_ THE ROOFTOP ZONE
including the Eye Garden and Roof Garden to maximise the "overlooked landscape" (from Dawes Point and the Harbour Bridge) and "green volume".

_The POOLSIDE ZONE
including the pool terrace, lower terrace and arrival sequence to continue the hotel's plant theme and identity throughout the hotel.

_ THE PRIVATE ZONE
including the penthouse balconies and spa rooms below to provide striking and memorable experiences.

The zones are stitched together by The Spine which unifies the zones and defines a strong landscape structure. The Spine acts as a continuous element throughout that is recognisable throughout the hotel.



**PARK HYATT
LANDSCAPE STRATEGY_**



Revision
DA Submission

Date
9 July 2010

Scale
1:750@A3

Client
Daisho Development Sydney Pty Ltd

Project Name
Park Hyatt Sydney

Drawing
SKL-101



DAWES POINT RESERVE

THE ROOF GARDEN—
a roof garden that is a complimentary foreground to the borrowed view across Campbell's Cove to the Opera House and expresses the identity of the Park Hyatt hotel

THE POOLSIDE GARDEN—
a terraced space that provides a poolside sanctuary for hotel patrons

THE EYE GARDEN—
a courtyard that acts as a simple foreground, complimenting the view across Campbell's Cove to the iconic Opera House

THE PENTHOUSE BALCONY—
small courtyard plantings that define complimentary but unique spaces along the penthouse balcony

THE SPINE—
a sinuous binding element that provides a consistent identity to the hotel rooftop expressing the strong geometry of the hotel

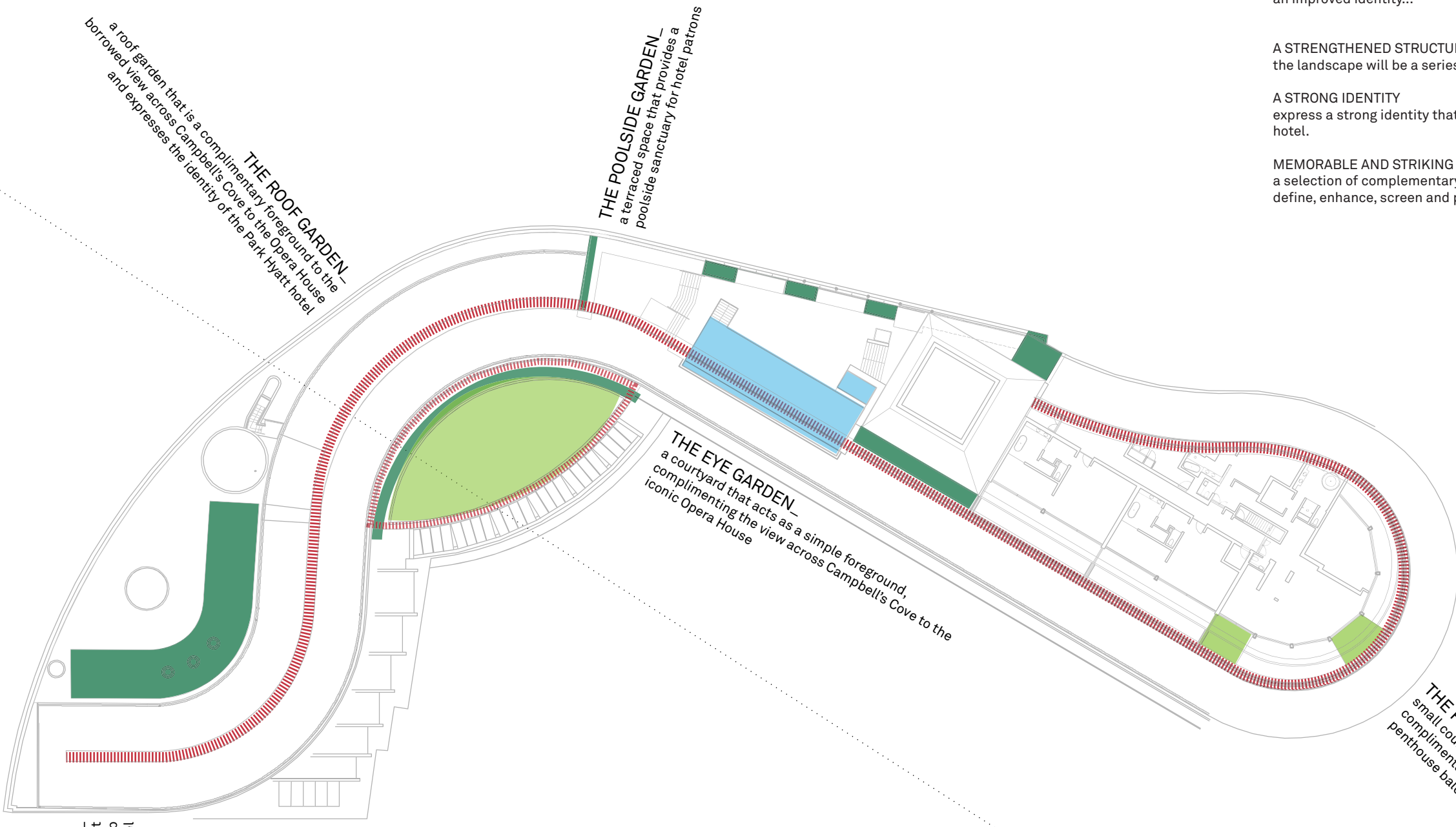
The character zones will be underpinned by a series of key landscape principles that include

an improved identity...

A STRENGTHENED STRUCTURE
the landscape will be a series of legible linked spaces.

A STRONG IDENTITY
express a strong identity that will compliment the character of the hotel.

MEMORABLE AND STRIKING
a selection of complementary and striking plant species that define, enhance, screen and protect.



CAMPBELLS COVE



**PARK HYATT
LANDSCAPE CONCEPT_**

HASSELL



Revision
DA Submission

Date
9 July 2010

Scale
1:500@A3

Client
Daisho Development Sydney Pty Ltd

Project Name
Park Hyatt Sydney

Drawing
SKL-102



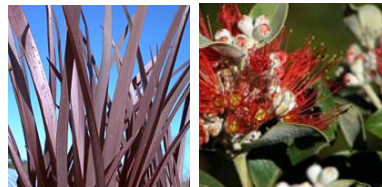
Decorative gravel areas



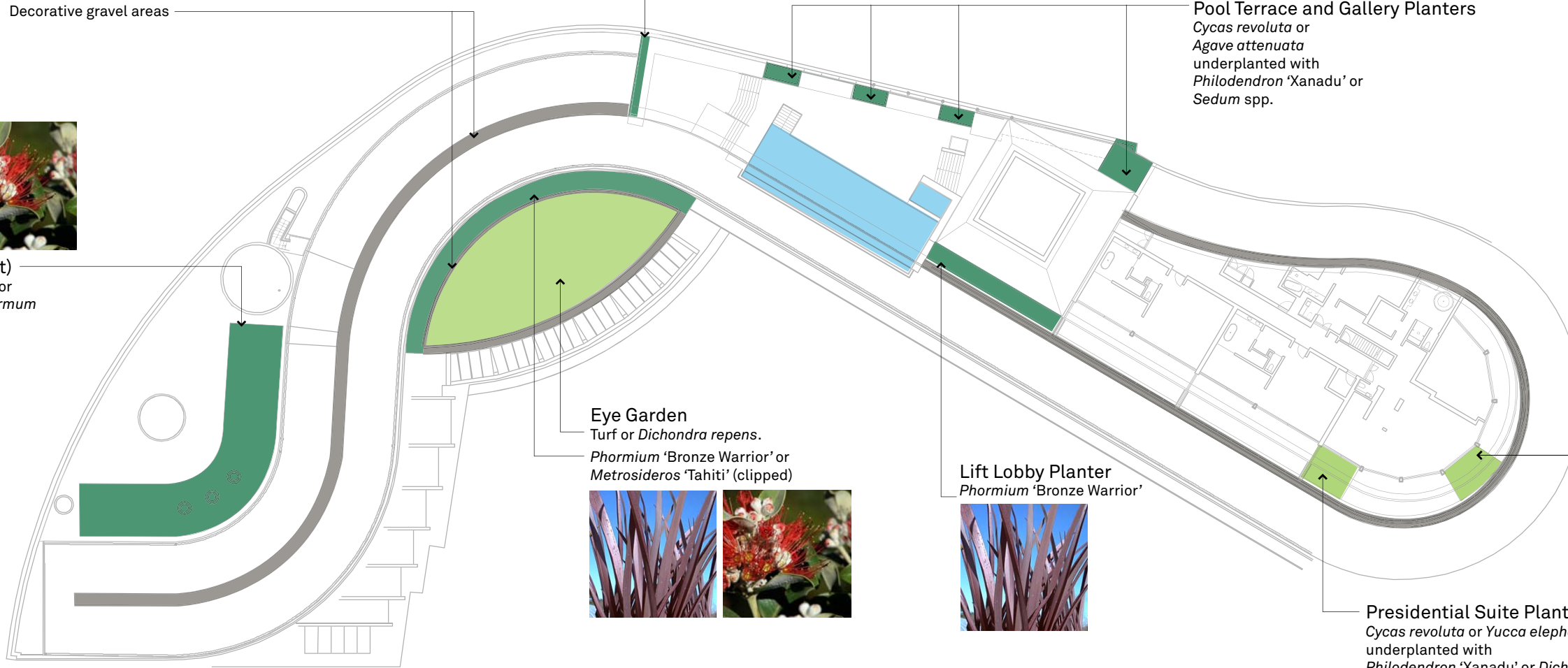
Pool Terrace Planter
Phormium 'Bronze Warrior' or
Metrosideros 'Tahiti' (clipped)



Pool Terrace and Gallery Planters
Cycas revoluta or
Agave attenuata
 underplanted with
Philodendron 'Xanadu' or
Sedum spp.



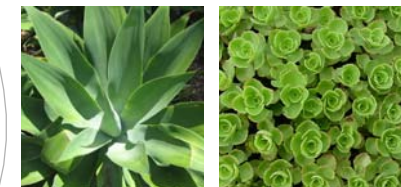
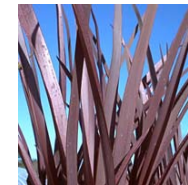
Roof Top Planter (West)
Phormium 'Bronze Warrior' or
 retain existing *Trachelospermum*
jasminoides



Eye Garden
 Turf or *Dichondra repens*.
Phormium 'Bronze Warrior' or
Metrosideros 'Tahiti' (clipped)



Lift Lobby Planter
Phormium 'Bronze Warrior'



Presidential Suite Planter
Agave attenuata
 underplanted with
Sedum spp.

Presidential Suite Planter
Cycas revoluta or *Yucca elephantipes*
 underplanted with
Philodendron 'Xanadu' or *Dichondra repens*.



Note:
 _All beds mulched with decorative gravel.
 _Any unproven plant species should be tested on site prior
 to mass planting.
 _Waterproofing and subsoil drainage connections to
 existing stormwater for all new planter beds.

PARK HYATT
 LANDSCAPE CONCEPT_



Revision
 DA Submission

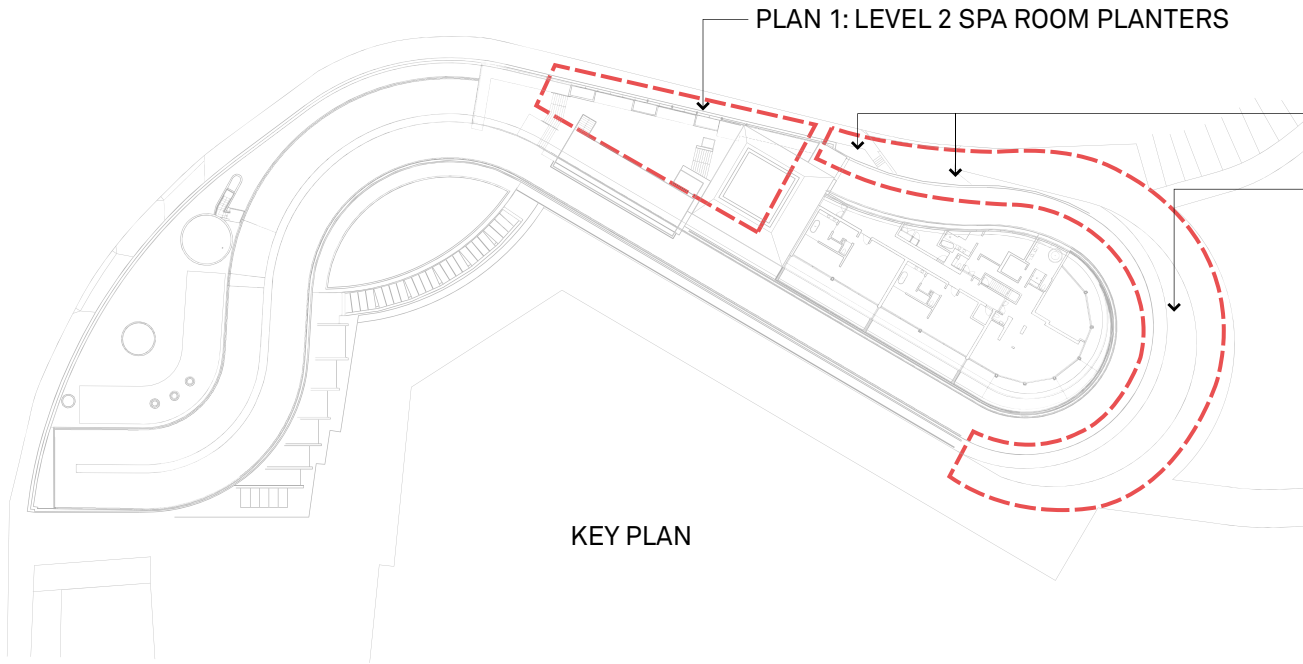
Date
 9 July 2010

Scale
 1:500@A3

Client
 Daisho Development Sydney Pty Ltd

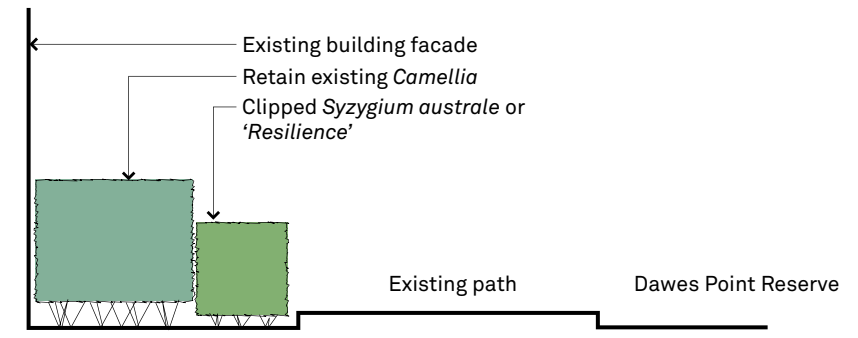
Project Name
 Park Hyatt Sydney

Drawing
 SKL-103

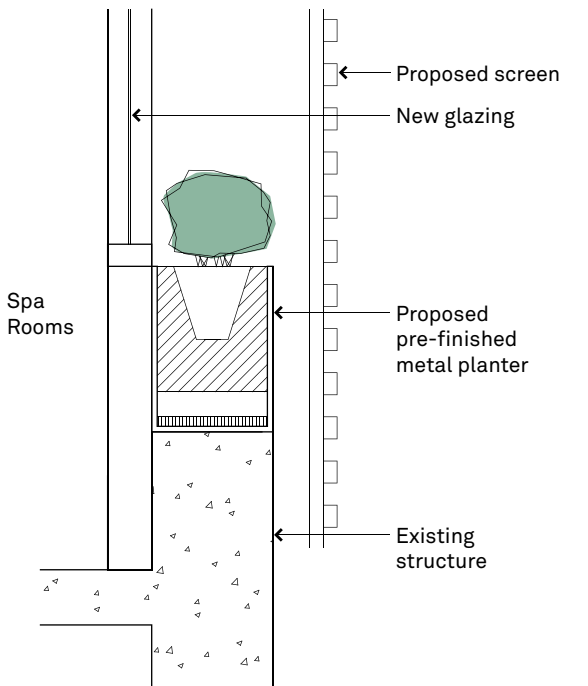


KEY PLAN

PLAN 1: LEVEL 2 SPA ROOM PLANTERS
 PLAN 2: HICKSON ROAD BASEMENT DRIVEWAY RAISED PLANTERS
 PLAN 2: GROUND LEVEL PLANTING BED DAWES POINT RESERVE



SECTION B: GROUND LEVEL PLANTING BED DAWES POINT RESERVE



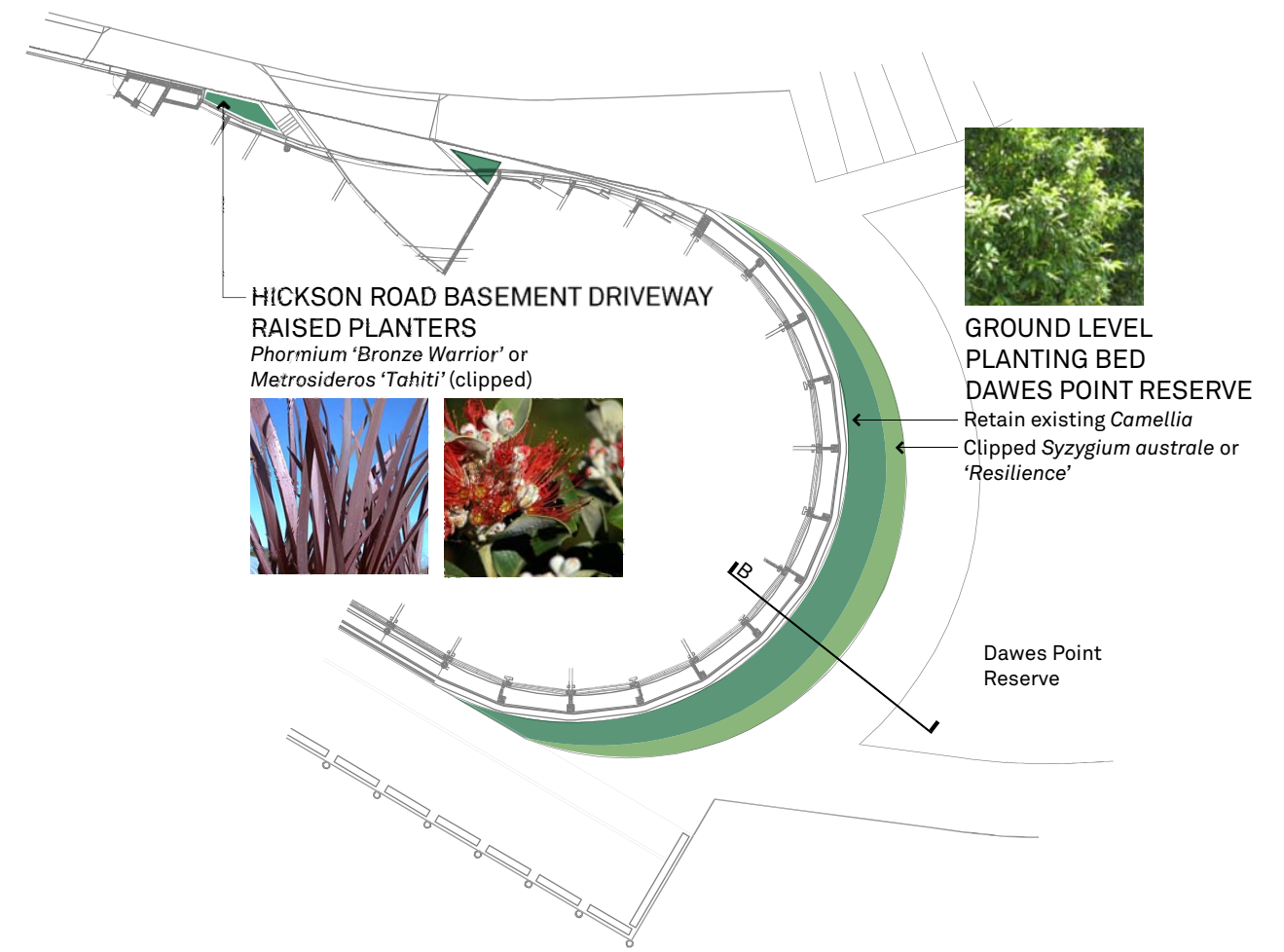
SECTION A: LEVEL 2 SPA ROOM PLANTERS



LEVEL 2 SPA ROOM PLANTER
Spathiphyllum or
Liriope or
Philodendron 'Xanadu'



PLAN 1: LEVEL 2 SPA ROOM PLANTERS



PLAN 2: GROUND LEVEL EXTERIOR PLANTING

HICKSON ROAD BASEMENT DRIVEWAY RAISED PLANTERS
Phormium 'Bronze Warrior' or
Metrosideros 'Tahiti' (clipped)



GROUND LEVEL PLANTING BED DAWES POINT RESERVE
 Retain existing *Camellia*
 Clipped *Syzygium australe* or
 'Resilience'

Note:
 All plans and sections are not drawn to scale.

PARK HYATT
 LANDSCAPE DESIGN_



Revision
 DA Submission

Date
 9 July 2010

Scale
 1:500@A3

Client
 Daisho Development Sydney Pty Ltd

Project Name
 Park Hyatt Sydney

Drawing
 SKL-104

HASSELL