

**3** DETAIL  
15567 SCALE 1:200

POINT	KM	CENTRELINE	EASTING	NORTHING
TOTP (T/O)	321.013	PROPOSED UP REALIGNMENT	331593.276	1384943.597
TOTP (ML)	321.012	PROPOSED UP RELIEF	331593.276	1384943.597
PTS	321.817	PROPOSED UP RELIEF	331592.517	1384943.866
XING (T/O) (T.P.C)	379.687	PROPOSED UP REALIGNMENT	331537.543	1384961.921
XING (ML) (T.P.C)	379.698	PROPOSED UP RELIEF	331537.990	1384963.284
TP (T/O)	385.815	PROPOSED UP REALIGNMENT	331531.671	1384963.677
TOEP (T/O)	388.726	PROPOSED UP REALIGNMENT	331528.880	1384964.505
TOEP (ML)	388.740	PROPOSED UP RELIEF	331529.472	1384966.317

TURNOUT DETAILS														
TURNOUT GEOMETRY								CROSSING DETAILS						
POINT NO.	BASE TYPE	TOTAL LENGTH TOTP TO TOEP	T/O LENGTH PTS TO XING	T/O RATE	T/O ANGLE	ML GEOMETRY	T/O GEOMETRY	DESCRIPTION	CAT. NO.	X-ING RATE	TYPE	RAIL (KG)	REFERENCES	DRG REFERENCE
T/O-03	1200:18.5	67.728	57.881	1 in 18.5	3° 05' 38.609"	STRAIGHT	R1200	STANDARD (LH)	-	-	SWING NOSE	UIC60	VOSSLOH	6200 6030-1_6

NOTE: INCLUDES T/O ENDFILL

**NOTES**

- FOR GENERAL NOTES REFER TO DRG No. ARTCN1100015507.
- COORDINATES SHOWN ON THIS DRAWING ARE DERIVED FROM I.S.G. ALL LEVELS ARE A.H.D.
- SURVEY INFORMATION FROM MONTEATH AND POWYS SURVEYORS OCTOBER 2009.
- DESIGN SPEED FOR TRAINS THROUGH TURNOUTS = 80km/h (HEAVY HAUL), 85km/h (NORM) / (XPT)
- DESIGN SPEED FOR TRACK AND CURVE CRITERIA = (HH) HEAVY HAUL AND (NORM) NORMAL.
- DESIGN RAIL IS DEFINED AS THE THEORETICAL LEVEL OF THE RUNNING SURFACE OF THE RAILS.
- EXISTING RAIL LEVEL IS DEFINED AS THE SURVEYED LEVEL OF THE RUNNING SURFACE OF THE RAILS.
- DESIGN FORMATION IS DEFINED AS THE FINISHED SURFACE LEVEL. THIS INCLUDES THE REQUIRED CAPPING LAYER.
- EXISTING SURFACE IS DEFINED AS THE SURVEY GROUND SURFACE.

**LEGEND**

- PROPOSED TRACKWORK
- EXISTING TRACKWORK
- EXISTING TRACKWORK TO BE REMOVED



WARNING: PUBLIC UTILITY SERVICES MAY EXIST ON OR ADJACENT TO THE SITE. THESE SERVICES MAY NOT BE SITUATED ALONG ROUTES INDICATED ON THIS DRAWING.

**© 2010 Australian Rail Track Corporation Ltd.**  
Drawing standard in accordance with Hunter 8 Alliance standards

Used on / Next higher assembly:  
**H8R-DWG-S2G-TRA-2597**

Alternate DMS number:

ARTC APPROVAL		Approved By			
Signed:					
Rev	Date	Revision Description	Drawn	Checked	Approved
0	06.08.10	ISSUED FOR CONSTRUCTION	D.J.C	T.L*	G.W*

Designing Company:  
**GHD**  
GHD Job Number:  
22-14630

Address:  
Level 3 GHD Tower, 24 Honeysuckle Drive  
Newcastle NSW, 2300 Australia  
F 61 2 4941 2796  
W www.hunter8alliance.com.au

Drawn:  
**D.CRANE**

Designed:  
**V.ALEX**

Drafting Check:  
**P.TOBIN\***

Design Check:  
**T.LYONS\***

Approved:  
**G.WICKENS\***

Date:  
06/08/2010

Conditions of Use:  
This document may only be used by GHD's client (and any other person who GHD has agreed can use this document) for the purpose for which it was prepared and must not be used by any other person or for any other purpose.

This Drawing must not be used for Construction unless signed as Approved

**Hunter ALLIANCE**

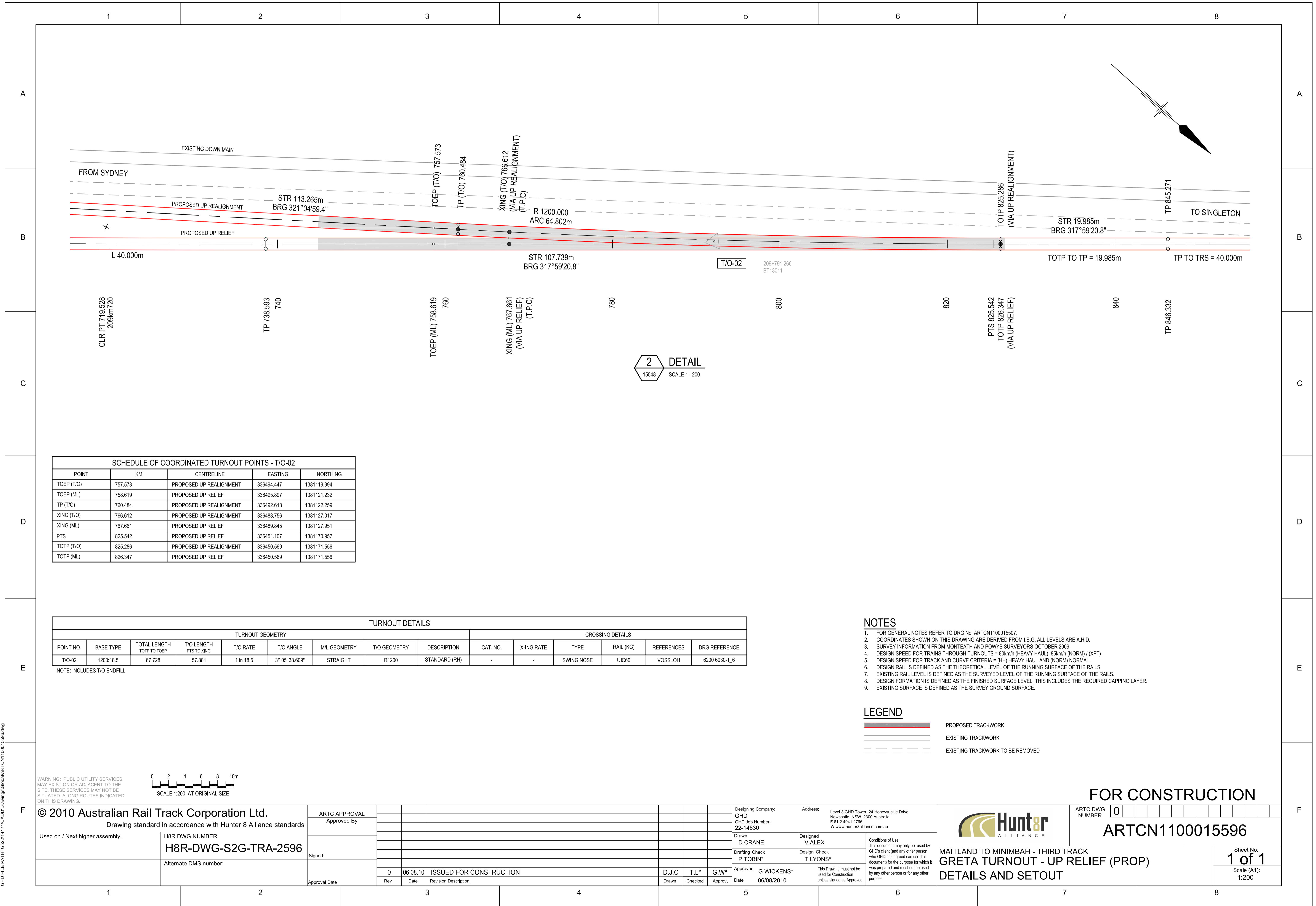
ARTC DWG NUMBER **0**

**ARTCN1100015597**

MAITLAND TO MINIMBAH - THIRD TRACK  
BRANXTON TURNOUT - UP RELIEF (PROP)  
DETAILS AND SETOUT

Sheet No.  
**1 of 1**  
Scale (A1):  
1:200

PLOT DATE: 06 August 2010 4:11 PM PLOTTED BY: DCR42 GHD FILE PATH: G:\2010\14630\Drawings\060810\ARTCN1100015597.dwg



**2** DETAIL  
15548 SCALE 1:200

SCHEDULE OF COORDINATED TURNOUT POINTS - T/O-02				
POINT	KM	CENTRELINE	EASTING	NORTHING
TOEP (T/O)	757.573	PROPOSED UP REALIGNMENT	336494.447	1381119.994
TOEP (ML)	758.619	PROPOSED UP RELIEF	336495.897	1381121.232
TP (T/O)	760.484	PROPOSED UP REALIGNMENT	336492.618	1381122.259
XING (T/O)	766.612	PROPOSED UP REALIGNMENT	336488.756	1381127.017
XING (ML)	767.661	PROPOSED UP RELIEF	336489.845	1381127.951
PTS	825.542	PROPOSED UP RELIEF	336451.107	1381170.957
TOTP (T/O)	825.286	PROPOSED UP REALIGNMENT	336450.569	1381171.556
TOTP (ML)	826.347	PROPOSED UP RELIEF	336450.569	1381171.556

TURNOUT DETAILS														
TURNOUT GEOMETRY								CROSSING DETAILS						
POINT NO.	BASE TYPE	TOTAL LENGTH TOTP TO TOEP	T/O LENGTH PTS TO XING	T/O RATE	T/O ANGLE	ML GEOMETRY	T/O GEOMETRY	DESCRIPTION	CAT. NO.	X-ING RATE	TYPE	RAIL (KG)	REFERENCES	DRG REFERENCE
T/O-02	1200:18.5	67.728	57.881	1 in 18.5	3° 05' 38.609"	STRAIGHT	R1200	STANDARD (RH)	-	-	SWING NOSE	UIC60	VOSSLOH	6200 6030-1_6

NOTE: INCLUDES T/O ENDFILL

- NOTES**
- FOR GENERAL NOTES REFER TO DRG No. ARTCN1100015507.
  - COORDINATES SHOWN ON THIS DRAWING ARE DERIVED FROM I.S.G. ALL LEVELS ARE A.H.D.
  - SURVEY INFORMATION FROM MONTEATH AND POWYS SURVEYORS OCTOBER 2009.
  - DESIGN SPEED FOR TRAINS THROUGH TURNOUTS = 80km/h (HEAVY HAUL), 85km/h (NORM) / (XPT)
  - DESIGN SPEED FOR TRACK AND CURVE CRITERIA = (HH) HEAVY HAUL AND (NORM) NORMAL.
  - DESIGN RAIL IS DEFINED AS THE THEORETICAL LEVEL OF THE RUNNING SURFACE OF THE RAILS.
  - EXISTING RAIL LEVEL IS DEFINED AS THE SURVEYED LEVEL OF THE RUNNING SURFACE OF THE RAILS.
  - DESIGN FORMATION IS DEFINED AS THE FINISHED SURFACE LEVEL. THIS INCLUDES THE REQUIRED CAPPING LAYER.
  - EXISTING SURFACE IS DEFINED AS THE SURVEY GROUND SURFACE.

- LEGEND**
- PROPOSED TRACKWORK
  - EXISTING TRACKWORK
  - EXISTING TRACKWORK TO BE REMOVED



WARNING: PUBLIC UTILITY SERVICES MAY EXIST ON OR ADJACENT TO THE SITE. THESE SERVICES MAY NOT BE SITUATED ALONG ROUTES INDICATED ON THIS DRAWING.

© 2010 Australian Rail Track Corporation Ltd. Drawing standard in accordance with Hunter 8 Alliance standards		ARTC APPROVAL Approved By	
Used on / Next higher assembly:	H8R DWG NUMBER <b>H8R-DWG-S2G-TRA-2596</b>	Signed:	
	Alternate DMS number:	Approval Date	

0	06.08.10	ISSUED FOR CONSTRUCTION	D.J.C	T.L*	G.W*
Rev	Date	Revision Description	Drawn	Checked	Approved

Designing Company: GHD GHD Job Number: 22-14630	Address: Level 3 GHD Tower, 24 Honeysuckle Drive Newcastle NSW, 2300 Australia F 61 2 4941 2796 W www.hunter8alliance.com.au
Drawn D.CRANE	Designed V.ALEX
Drafting Check P.TOBIN*	Design Check T.LYONS*
Approved G.WICKENS*	Date 06/08/2010

**FOR CONSTRUCTION**

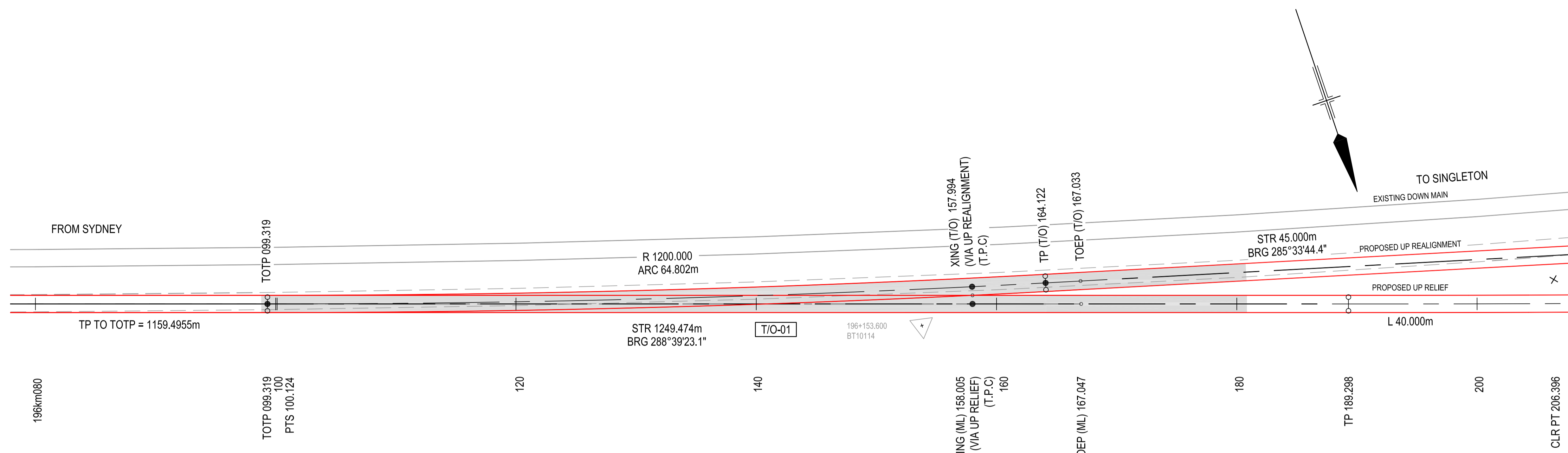
ARTC DWG NUMBER **0**

**ARTCN1100015596**

MAITLAND TO MINIMBAH - THIRD TRACK  
GRETA TURNOUT - UP RELIEF (PROP)  
DETAILS AND SETOUT

Sheet No.  
**1 of 1**  
Scale (A1):  
1:200

PLOT DATE: 06 August 2010 4:10 PM PLOTTED BY: DCR42 GHD FILE PATH: G:\2010\14630\Drawings\GHD\ARTCN1100015596.dwg



**1** DETAIL  
SCALE 1:200

SCHEDULE OF COORDINATED TURNOUT POINTS - T/O-01				
POINT	KM	CENTRELINE	EASTING	NORTHING
TOTP (T/O)	099.319	PROPOSED UP REALIGNMENT	348358.353	1377545.699
TOTP (ML)	099.319	PROPOSED UP RELIEF	348358.353	1377545.699
PTS	100.124	PROPOSED UP RELIEF	348357.590	1377545.957
XING (T/O)	157.994	PROPOSED UP REALIGNMENT	348302.325	1377563.103
XING (ML)	158.005	PROPOSED UP RELIEF	348302.751	1377564.473
TO (T/O)	164.122	PROPOSED UP REALIGNMENT	348296.426	1377564.762
TOEP (T/O)	167.033	PROPOSED UP REALIGNMENT	348293.622	1377565.543
TOEP (ML)	167.047	PROPOSED UP RELIEF	348294.184	1377567.365

TURNOUT DETAILS														
TURNOUT GEOMETRY								CROSSING DETAILS						
POINT NO.	BASE TYPE	TOTAL LENGTH TOTP TO TOEP	T/O LENGTH PTS TO XING	T/O RATE	T/O ANGLE	ML GEOMETRY	T/O GEOMETRY	DESCRIPTION	CAT. NO.	X-ING RATE	TYPE	RAIL (KG)	REFERENCES	DRG REFERENCE
T/O-01	1200:18.5	67.728	57.881	1 in 18.5	3° 05' 38.609"	STRAIGHT	R1200	STANDARD (LH)	-	-	SWING NOSE	UIC60	VOSSLOH	6200 6030-1_6

NOTE: INCLUDES T/O ENDFILL

**NOTES**

- FOR GENERAL NOTES REFER TO DRG No. ARTCN100015507.
- COORDINATES SHOWN ON THIS DRAWING ARE DERIVED FROM I.S.G. ALL LEVELS ARE A.H.D.
- SURVEY INFORMATION FROM MONTEATH AND POWYS SURVEYORS OCTOBER 2009.
- DESIGN SPEED FOR TRAINS THROUGH TURNOUTS = 80km/h (HEAVY HAUL), 85km/h (NORM) / (XPT)
- DESIGN SPEED FOR TRACK AND CURVE CRITERIA = (HH) HEAVY HAUL AND (NORM) NORMAL
- DESIGN RAIL IS DEFINED AS THE THEORETICAL LEVEL OF THE RUNNING SURFACE OF THE RAILS.
- EXISTING RAIL LEVEL IS DEFINED AS THE SURVEYED LEVEL OF THE RUNNING SURFACE OF THE RAILS.
- DESIGN FORMATION IS DEFINED AS THE FINISHED SURFACE LEVEL. THIS INCLUDES THE REQUIRED CAPPING LAYER.
- EXISTING SURFACE IS DEFINED AS THE SURVEY GROUND SURFACE.

**LEGEND**

- PROPOSED TRACKWORK
- EXISTING TRACKWORK
- - - - - EXISTING TRACKWORK TO BE REMOVED



WARNING: PUBLIC UTILITY SERVICES MAY EXIST ON OR ADJACENT TO THE SITE. THESE SERVICES MAY NOT BE SITUATED ALONG ROUTES INDICATED ON THIS DRAWING.

**© 2010 Australian Rail Track Corporation Ltd.**  
Drawing standard in accordance with Hunter 8 Alliance standards

Used on / Next higher assembly: **H8R-DWG-S2G-TRA-2595**

Alternate DMS number:

ARTC APPROVAL		Approved By			
Signed:					
Approval Date	0	06.08.10	ISSUED FOR CONSTRUCTION	D.J.C	T.L*
Rev	Date	Revision Description	Drawn	Checked	Approved

Designing Company: **GHD**  
GHD Job Number: **22-14630**

Address: Level 3 GHD Tower, 24 Honeysuckle Drive  
Newcastle NSW, 2300 Australia  
F 61 2 4941 2796  
W www.hunter8alliance.com.au

Drawn: **D.CRANE**  
Designed: **V.ALEX**

Drafting Check: **P.TOBIN\***  
Design Check: **T.LYONS\***

Approved: **G.WICKENS\***  
Date: **06/08/2010**

This Drawing must not be used for Construction unless signed as Approved.

**Hunter ALLIANCE**

ARTC DWG NUMBER: **0**

**ARTCN100015595**

MAITLAND TO MINIMBAH - THIRD TRACK  
**FARLEY TURNOUT - UP RELIEF (PROP)**  
DETAILS AND SETOUT

Sheet No. **1 of 1**  
Scale (A1): **1:200**

PLOT DATE: 06 August 2010 4:10 PM PLOTTED BY: DCR42 GHD FILE PATH: G:\22\14630\Drawings\06\ARTCN100015595.dwg