

1 2 3 4 5 6 7 8

A

B

C

D

E

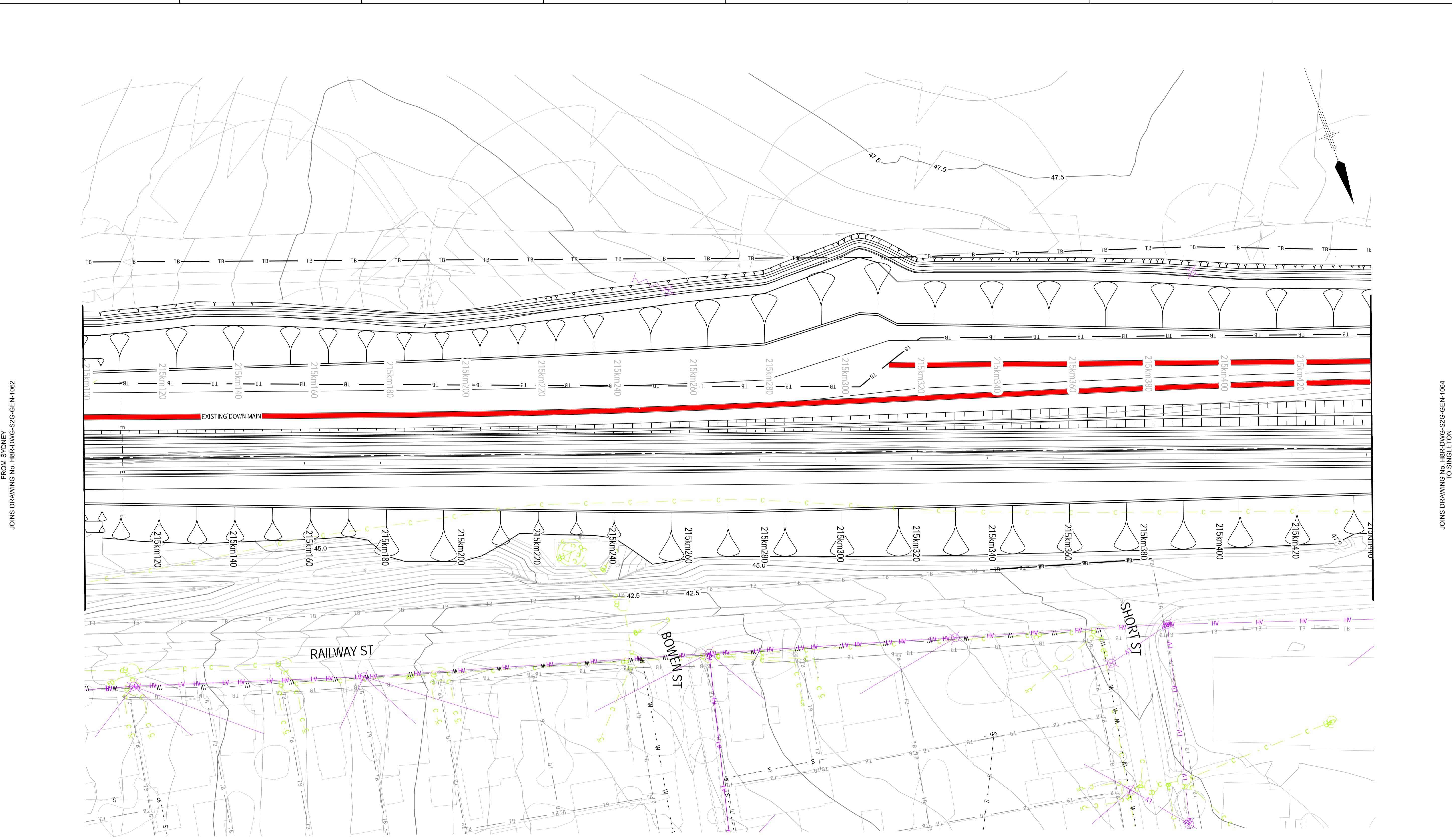
A

B

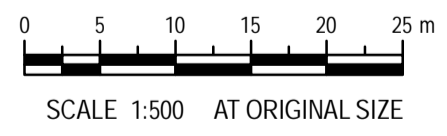
C

D

E



JOINS DRAWING No. H8R-DWG-S2G-GEN-1064
TO SINGLETON



UNCONTROLLED DOCUMENT

PRELIMINARY

© 2009 Australian Rail Track Corporation Ltd.
Drawing standard in accordance with Hunter 8 Alliance standards

ARTC APPROVAL
Approved By

Used on / Next higher assembly:

Signed:

Alternate DMS number:

Approval Date

Rev	Date	Revision Description
B	16.02.10	ISSUED FOR COMMENT
A	10.02.10	ISSUED FOR COMMENT

G.M.
T.M.

Designing Company:
GHD
GHD Job Number:
22-14471

Address:

Level 3 GHD Tower, 24 Honeysuckle Drive
Newcastle, NSW 2300 Australia
T 61 2 4979 9999 F 61 2 4979 9988
E rtm@mail@ghd.com W www.ghd.com

Drawn
T.MORTON

Designed
R.STEPHENS

Design Check

Approved

Conditions of Use:
This document may only be used by GHD's client (and any other person who GHD had agreed can use this document) for the purpose for which it was prepared and must not be used by any other person or for any other purpose.



H8R DWG NUMBER

9 B

H8R-DWG-S2G-GEN-1063

MAITLAND TO MINIMBAH - THIRD TRACK
DETAIL PLAN
CH215km100 TO CH215km440

Sheet No.
63 OF 89
Scale (A1):
1:500

1 2 3 4 5 6 7 8

PLOT DATE: 18/02/2010 10:58AM
GHD FILEPATH: \\HTRS\01\GHD_Data\2214471\GIS\Map\Bases\Cad Templates\General Arrangements\H8R-DWG-S2G-GEN-1063_A1_Mapbook_20100211_A.mxd

1 2 3 4 5 6 7 8

A

B

C

D

E

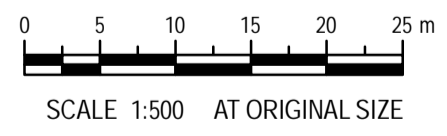
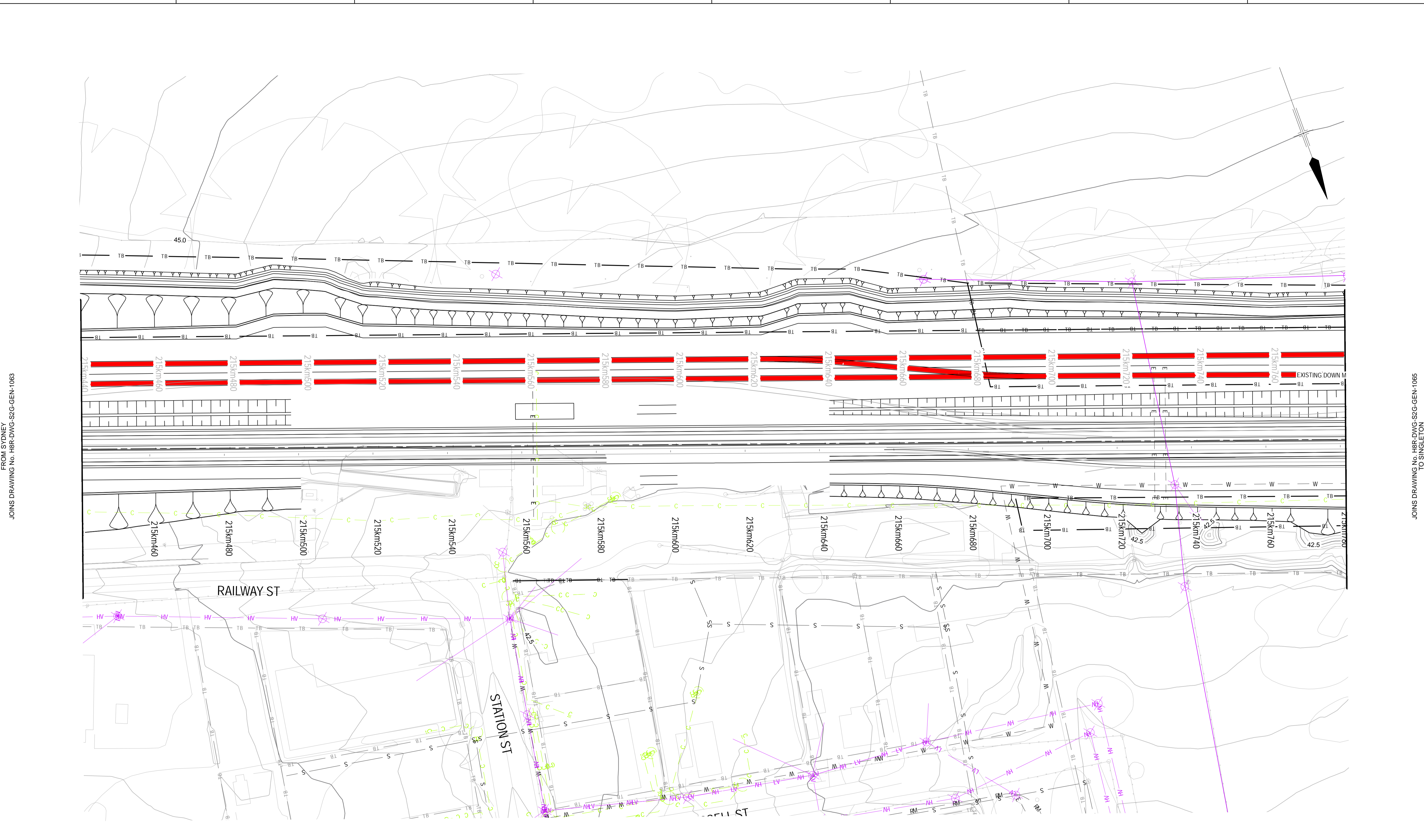
A

B

C

D

E



UNCONTROLLED DOCUMENT

PRELIMINARY

© 2009 Australian Rail Track Corporation Ltd.
Drawing standard in accordance with Hunter 8 Alliance standards

ARTC APPROVAL
Approved By

Used on / Next higher assembly:

Signed:

Alternate DMS number:

Approval Date

Rev	Date	Revision Description	Drawn	Checked	Approved
B	16.02.10	ISSUED FOR COMMENT			G.M.
A	10.02.10	ISSUED FOR COMMENT			T.M.

Designing Company:
GHD
GHD Job Number:
22-14471

Drawn:
T.MORTON
Drafting Check

Approved:
Date

Address:
Level 3 GHD Tower, 24 Honeyuckle Drive
Newcastle NSW 2300 Australia
T 61 2 4979 9999 F 61 2 4979 9988
E intmail@ghd.com W www.ghd.com

Designed:
R.STEPHENS
Design Check

Conditions of Use:
This document may only be used by GHD's client (and any other person who GHD had agreed can use this document) for the purpose for which it was prepared and must not be used by any other person or for any other purpose.

H8R DWG NUMBER 9 B

H8R-DWG-S2G-GEN-1064

MAITLAND TO MINIMBAH - THIRD TRACK
DETAIL PLAN
CH215km440 TO CH215km780

Sheet No.
64 OF 89
Scale (A1):
1:500

1 2 3 4 5 6 7 8

PLOT DATE: 18/02/2010 10:58AM GHD FILEPATH: \\HTRS\01\GHD_Data\2214471\GIS\Map\General Arrangements\H8R-DWG-S2G-GEN-1064_1089_A1_Mapbook_20100211_A.mxd

JOINS DRAWING No. H8R-DWG-S2G-GEN-1065 TO SINGLETON

1 2 3 4 5 6 7 8

A

B

C

D

E

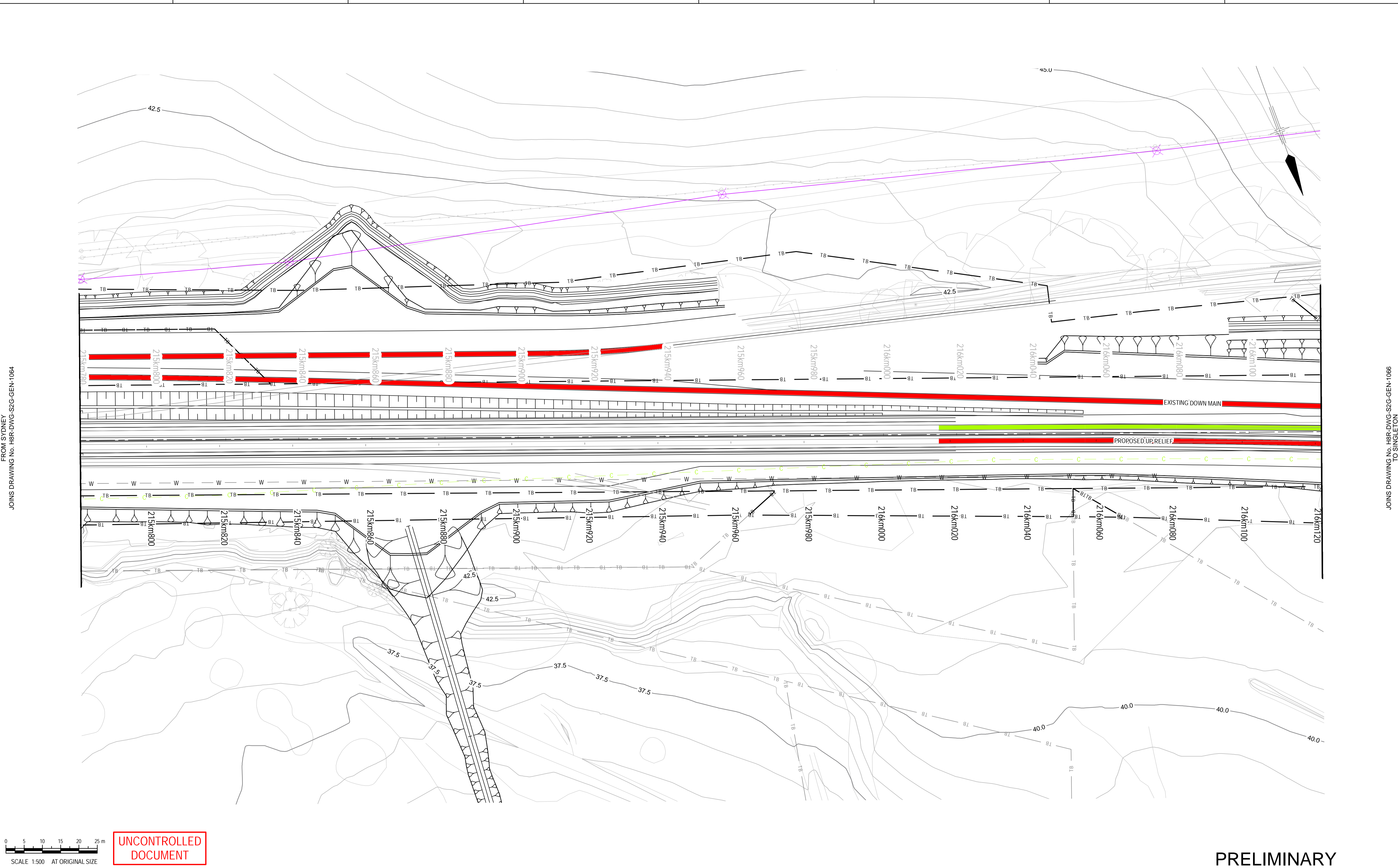
A

B

C

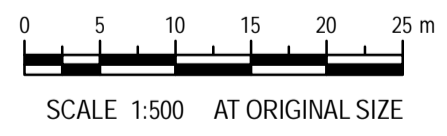
D

E



FROM SYDNEY
JOINS DRAWING No. H8R-DWG-S2G-GEN-1064

TO SINGLETON
JOINS DRAWING No. H8R-DWG-S2G-GEN-1066



UNCONTROLLED DOCUMENT

PRELIMINARY

© 2009 Australian Rail Track Corporation Ltd.
Drawing standard in accordance with Hunter 8 Alliance standards

ARTC APPROVAL					
Approved By					
Signed:					
Approval Date	Rev	Date	Revision Description	Drawn	Checked
	B	16.02.10	ISSUED FOR COMMENT	G.M.	
	A	10.02.10	ISSUED FOR COMMENT	T.M.	

Designing Company: GHD GHD Job Number: 22-14471	Address: Level 3 GHD Tower, 24 Honeysuckle Drive Newcastle NSW 2300 Australia T 61 2 4979 9999 F 61 2 4979 9988 E ntmial@ghd.com W www.ghd.com
Drawn T.MORTON	Designed R.STEPHENS
Drafting Check	Design Check
Approved	Date

H8R DWG NUMBER **9B**

H8R-DWG-S2G-GEN-1065

MAITLAND TO MINIMBAH - THIRD TRACK
DETAIL PLAN
CH215km780 TO CH216km120

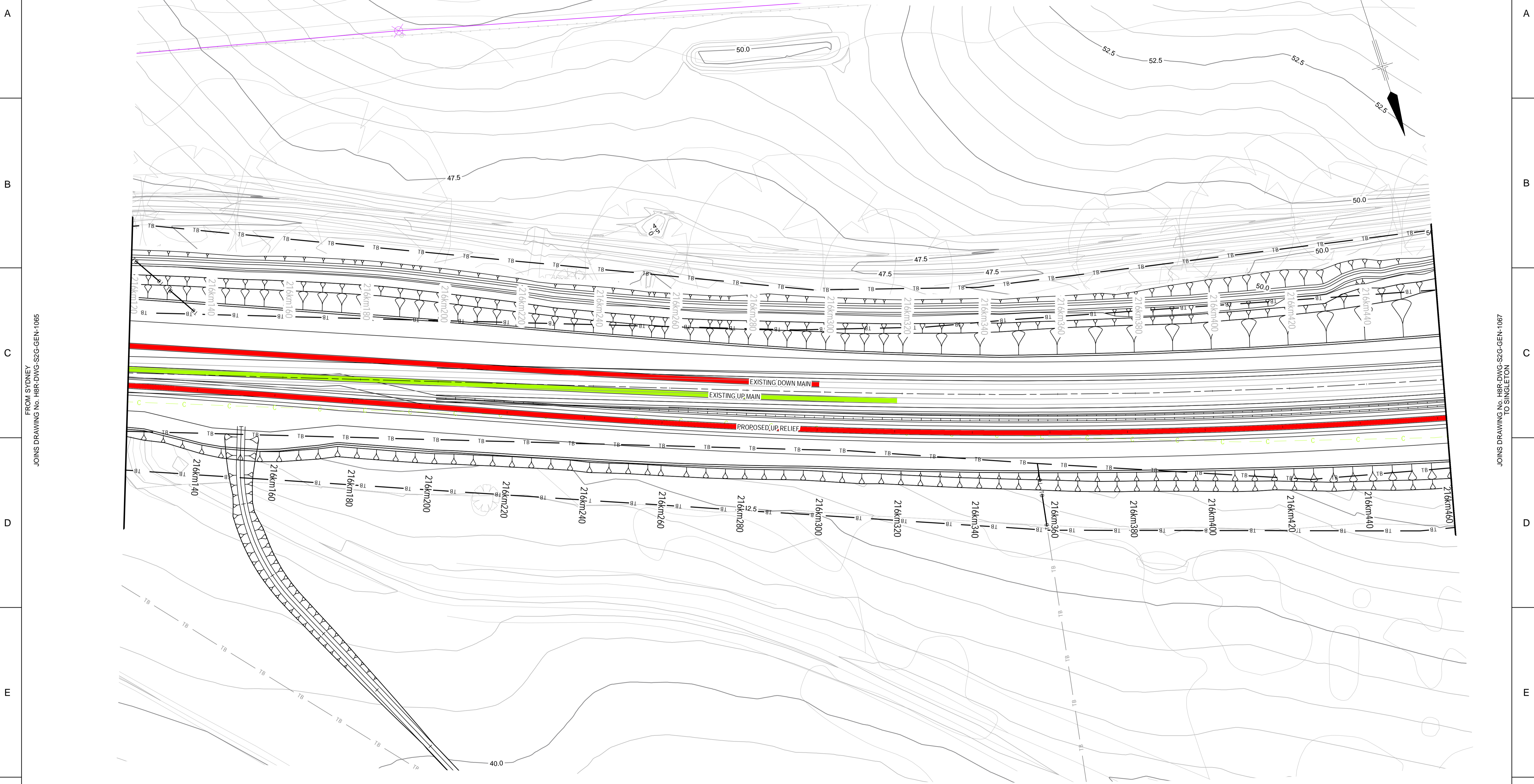
Sheet No.
65 OF 89

Scale (A1):
1:500

PLOT DATE: 18/02/2010 10:58AM
GHD FILEPATH: \\NTS\01\GHD_Data\2214471\GIS\Map\General Arrangements\H8R-DWG-S2G-GEN-1064_A1_Mapbook_20100211_A.mxd

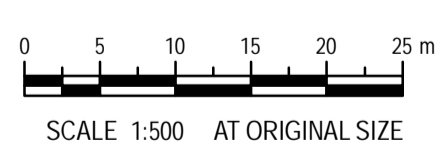
1 2 3 4 5 6 7 8

1 2 3 4 5 6 7 8



FROM SYDNEY
JOINS DRAWING No. H8R-DWG-S2G-GEN-1065

JOINS DRAWING No. H8R-DWG-S2G-GEN-1067
TO SINGLETON




UNCONTROLLED DOCUMENT

PRELIMINARY

© 2009 Australian Rail Track Corporation Ltd.
Drawing standard in accordance with Hunter 8 Alliance standards

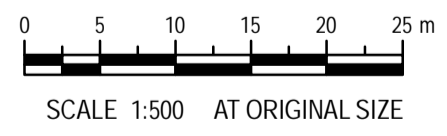
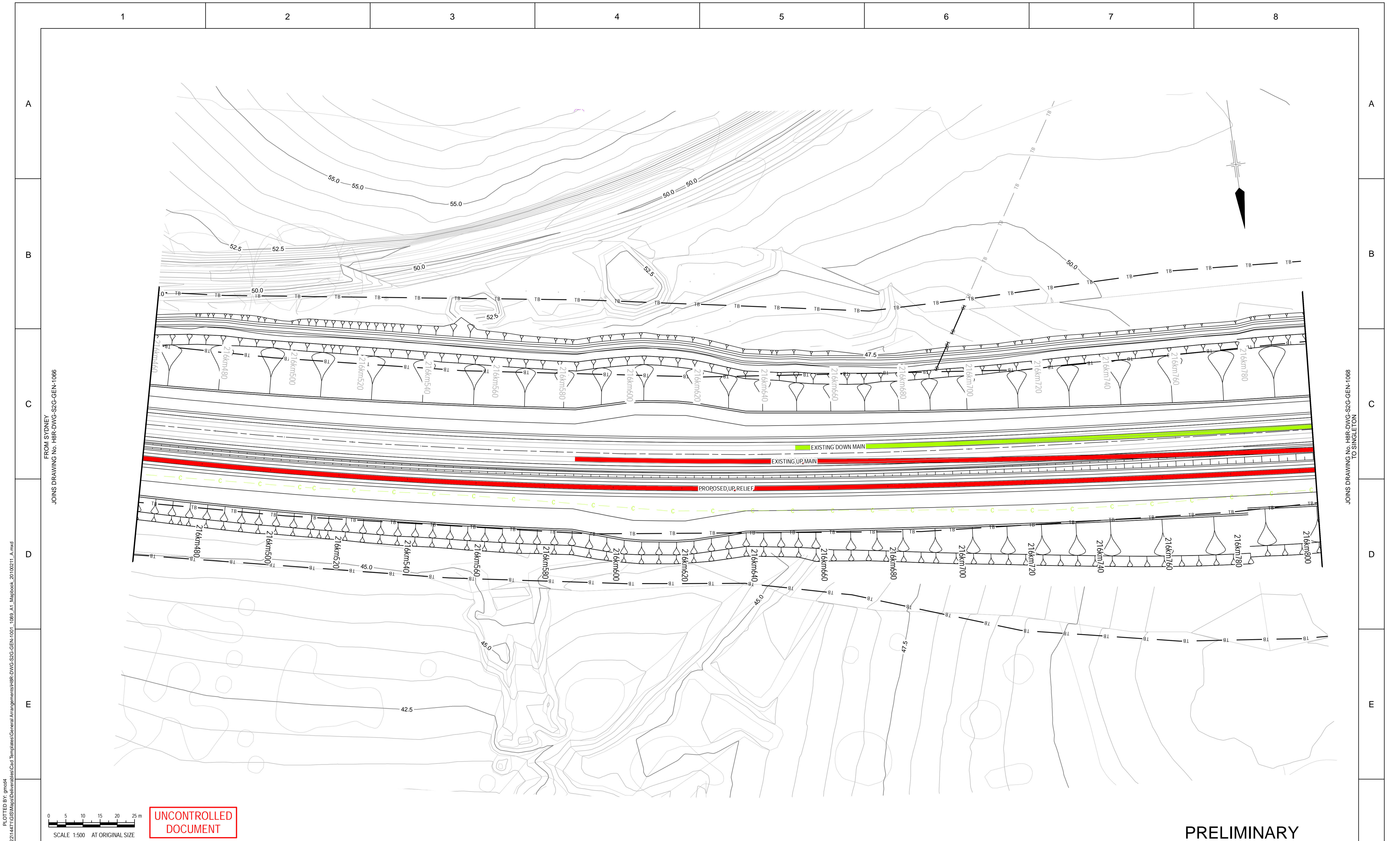
ARTC APPROVAL			
Approved By			
Signed:			
Rev	Date	Revision Description	Drawn
B	16.02.10	ISSUED FOR COMMENT	G.M.
A	10.02.10	ISSUED FOR COMMENT	T.M.

Designing Company: GHD GHD Job Number: 22-14471	Address: Level 3 GHD Tower, 24 Honeysuckle Drive Newcastle NSW 2300 Australia T 61 2 4979 9999 F 61 2 4979 9988 E ntm@mail@ghd.com W www.ghd.com
Drawn T.MORTON	Designed R.STEPHENS
Drafting Check	Design Check
Approved	Date


H8R-DWG-S2G-GEN-1066
 MAITLAND TO MINIMBAH - THIRD TRACK
DETAIL PLAN
 CH216km120 TO CH216km460
 Sheet No. **66 OF 89**
 Scale (A1): 1:500

1 2 3 4 5 6 7 8

PLOT DATE: 18/02/2010 10:58AM
GHD FILEPATH: \\HTS\01\GHD_Drawing\22\14471\GIS\Map\General Arrangements\H8R-DWG-S2G-GEN-1065_A1_Mapbook_20100211_A.mxd



UNCONTROLLED DOCUMENT

PRELIMINARY

© 2009 Australian Rail Track Corporation Ltd.
 Drawing standard in accordance with Hunter 8 Alliance standards

Used on / Next higher assembly:

Alternate DMS number:

ARTC APPROVAL		Approved By			
Signed:					
Approval Date	Rev	Date	Revision Description	Drawn	Checked
	B	16.02.10	ISSUED FOR COMMENT	G.M.	
	A	10.02.10	ISSUED FOR COMMENT	T.M.	

Designing Company: GHD
 GHD Job Number: 22-14471

Address: Level 3 GHD Tower, 24 Honeysuckle Drive
 Newcastle NSW 2300 Australia
 T 61 2 4979 9999 F 61 2 4979 9988
 E ntm@mail@ghd.com W www.ghd.com

Drawn: T.MORTON
 Drafting Check: []

Designed: R.STEPHENS
 Design Check: []

Approved: []
 Date: []

Conditions of Use: This document may only be used by GHD's client (and any other person who GHD had agreed can use this document) for the purpose for which it was prepared and must not be used by any other person or for any other purpose.

H8R DWG NUMBER: 9B

H8R-DWG-S2G-GEN-1067

MAITLAND TO MINIMBAH - THIRD TRACK
 DETAIL PLAN
 CH216km460 TO CH216km800

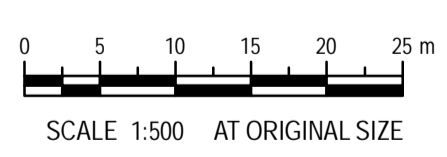
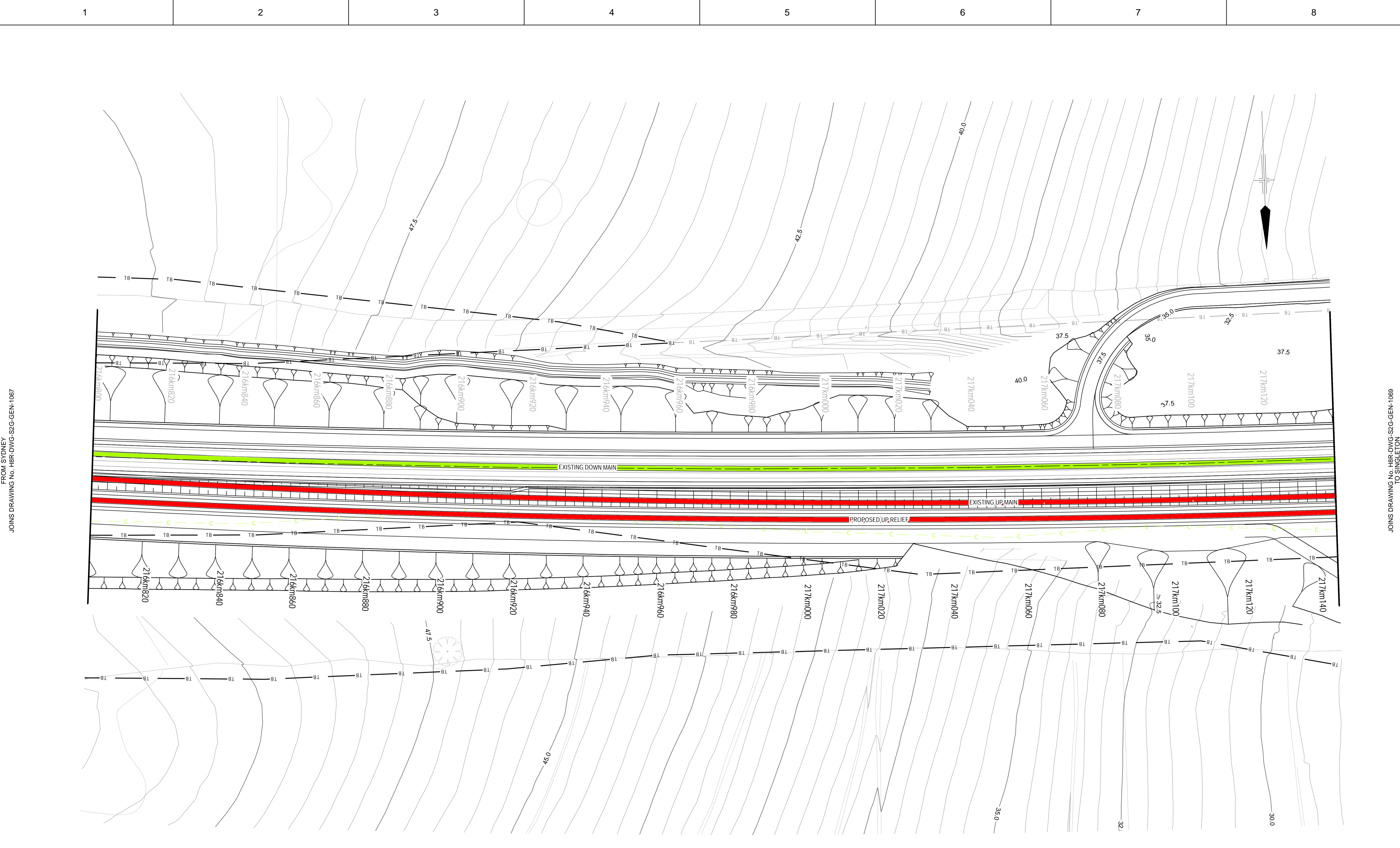
Sheet No.
67 OF 89

Scale (A1):
 1:500

PLOT DATE: 18/02/2010 10:58AM
 GHD FILEPATH: \\NTS\01\GHD_DWG\2214471\GIS\Map\Barrabool\Cad Templates\General Arrangements\H8R-DWG-S2G-GEN-1067_A1_Mapbook_20100211_A.mxd

FROM SYDNEY
 JOINS DRAWING No. H8R-DWG-S2G-GEN-1066

TO SINGLETON
 JOINS DRAWING No. H8R-DWG-S2G-GEN-1068



UNCONTROLLED DOCUMENT

PRELIMINARY

© 2009 Australian Rail Track Corporation Ltd.
 Drawing standard in accordance with Hunter 8 Alliance standards
 Used on / Next higher assembly:
 Alternate DMS number:

ARTC APPROVAL			
Approved By			
Signed:			
Approval Date	Rev	Date	Revision Description
	B	16.02.10	ISSUED FOR COMMENT
	A	10.02.10	ISSUED FOR COMMENT

Designing Company: GHD GHD Job Number: 22-14471	Address: Level 3 GHD Tower, 24 Honeysuckle Drive Newcastle NSW 2300 Australia T 61 2 4979 9999 F 61 2 4979 9988 E rtm@mail@ghd.com W www.ghd.com
Drawn T.MORTON	Designed R.STEPHENS
Drafting Check	Design Check
Approved	Date

H8R-DWG-S2G-GEN-1068

MAITLAND TO MINIMBAH - THIRD TRACK
 DETAIL PLAN
 CH216km800 TO CH217km140

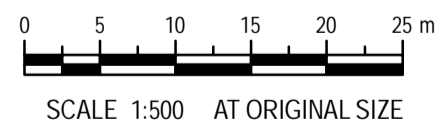
Sheet No.
68 OF 89

Scale (A1):
1:500

PLOT DATE: 18/02/2010 10:58AM
 GHD FILEPATH: \\NTSRV01\GHD_Data\2214471\GIS\Maps\Deliverables\Cad Templates\General Arrangements\H8R-DWG-S2G-GEN-1001-1089_A1_Mapbook_20100211_A.mxd

FROM SYDNEY
 JOINS DRAWING No. H8R-DWG-S2G-GEN-1067

JOINS DRAWING No. H8R-DWG-S2G-GEN-1069
 TO SINGLETON



UNCONTROLLED DOCUMENT

PRELIMINARY

© 2009 Australian Rail Track Corporation Ltd.
 Drawing standard in accordance with Hunter 8 Alliance standards
 Used on / Next higher assembly:
 Alternate DMS number:

ARTC APPROVAL					
Approved By					
Signed:					
Approval Date	Rev	Date	Revision Description	Drawn	Checked
	B	16.02.10	ISSUED FOR COMMENT	G.M.	
	A	10.02.10	ISSUED FOR COMMENT	T.M.	

Designing Company:
 GHD
 GHD Job Number:
 22-14471

Address:
 Level 3 GHD Tower, 24 Honeysuckle Drive
 Newcastle NSW 2300 Australia
 T 61 2 4979 9999 F 61 2 4979 9988
 E ntmial@ghd.com W www.ghd.com

Drawn:
 T.MORTON

Designed:
 R.STEPHENS

Design Check:
 R.STEPHENS

Approved:
 Date

Conditions of Use:
 This document may only be used by GHD's client (and any other person who GHD had agreed can use this document) for the purpose for which it was prepared and must not be used by any other person or for any other purpose.

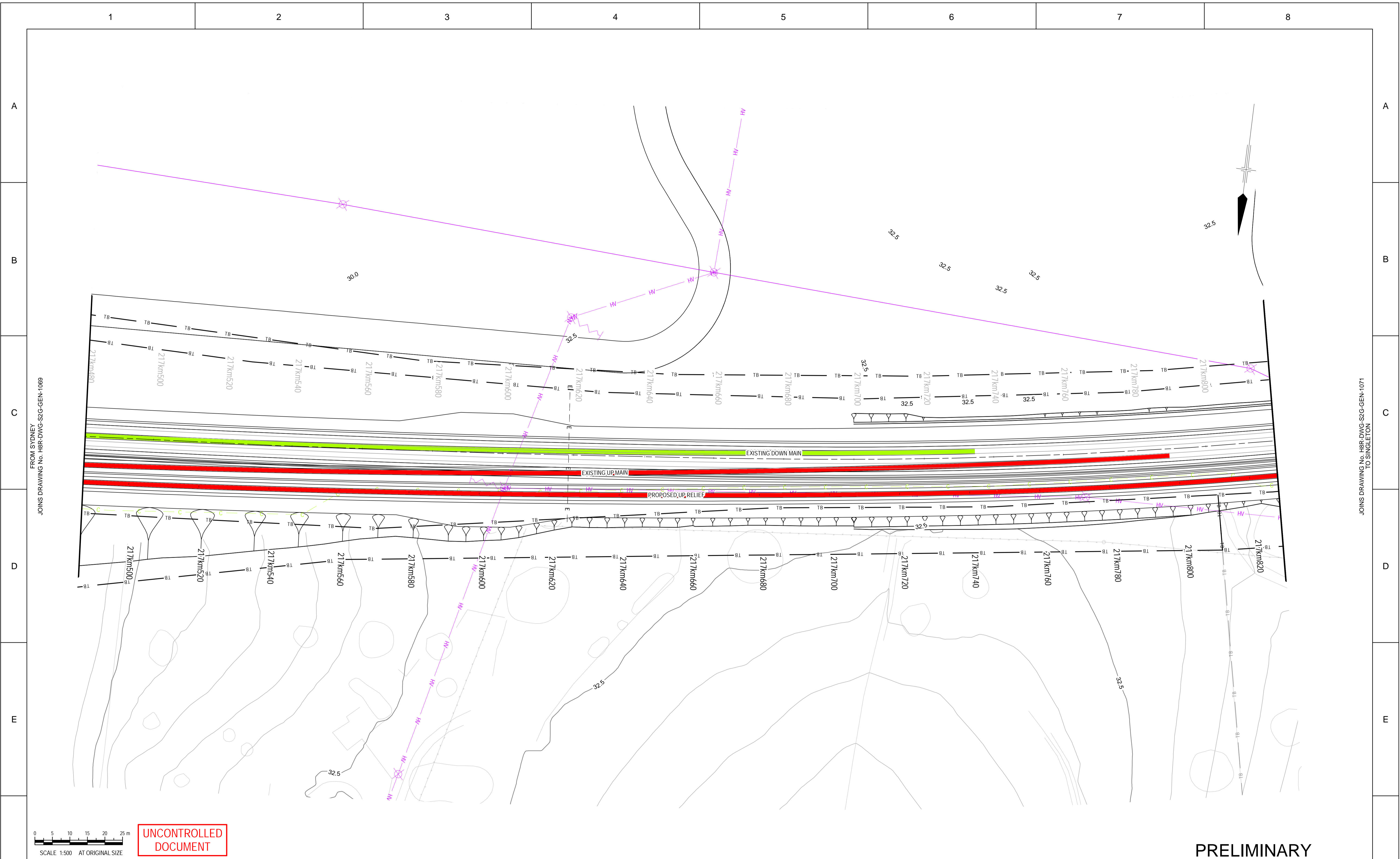
This Drawing must not be used for Construction unless signed as Approved

	H8R DWG NUMBER	9 B
	H8R-DWG-S2G-GEN-1069	
MAITLAND TO MINIMBAH - THIRD TRACK DETAIL PLAN CH217km140 TO CH217km480		Sheet No. 69 OF 89 Scale (A1): 1:500

PLOT DATE: 18/02/2010 10:58AM
 GHD FILEPATH: \\NTSMS01\GHD\Draw\2214471\GIS\Map\General Arrangements\H8R-DWG-S2G-GEN-1069_A1_Mapbook_20100211_A.mxd

FROM SYDNEY
 JOINS DRAWING No. H8R-DWG-S2G-GEN-1068

TO SINGLETON
 JOINS DRAWING No. H8R-DWG-S2G-GEN-1070



PLOT DATE: 18/02/2010 10:58AM
 GHD FILEPATH: \\NTS\01\GHD\Draw\2214471\GIS\Map\Arrangements\H8R-DWG-S2G-GEN-1071-1069_A1_Mapbook_20100211_A.mxd

© 2009 Australian Rail Track Corporation Ltd.
 Drawing standard in accordance with Hunter 8 Alliance standards

Used on / Next higher assembly:

Alternate DMS number:

ARTC APPROVAL					
Approved By					
Signed:					
Rev	Date	Revision Description	Drawn	Checked	Approved
B	16.02.10	ISSUED FOR COMMENT	G.M.		
A	10.02.10	ISSUED FOR COMMENT	T.M.		

Designing Company:
 GHD
 GHD Job Number:
 22-14471

Address:
 Level 3 GHD Tower, 24 Honeysuckle Drive
 Newcastle NSW 2300 Australia
 T 61 2 4979 9999 F 61 2 4979 9988
 E ntmial@ghd.com W www.ghd.com

Drawn:
 T.MORTON

Designed:
 R.STEPHENS

Design Check:
 DESIGN CHECK

Approved:
 Date

Conditions of Use:
 This document may only be used by GHD's client (and any other person who GHD had agreed can use this document) for the purpose for which it was prepared and must not be used by any other person or for any other purpose.

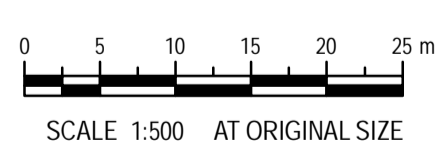
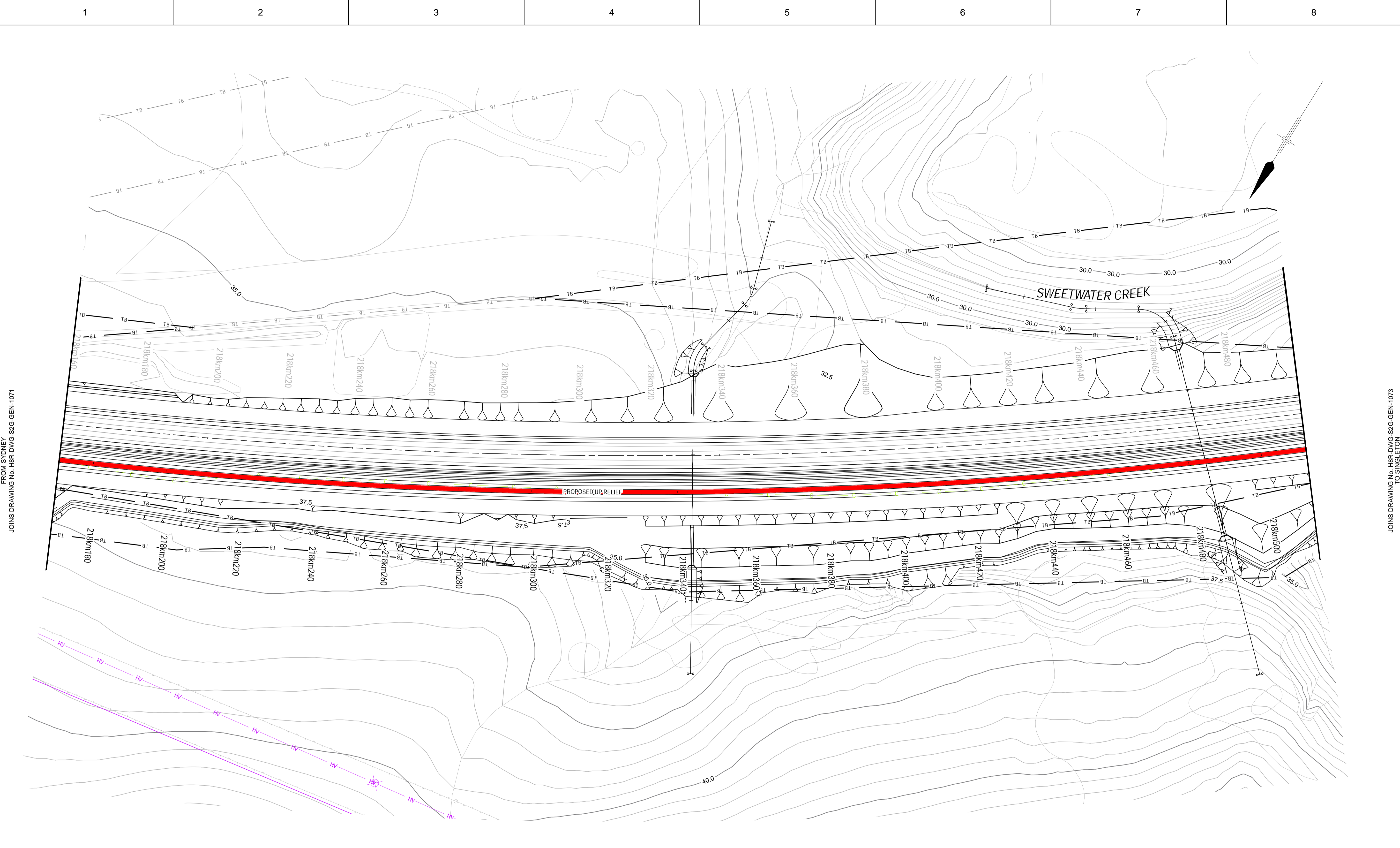
This Drawing must not be used for Construction unless signed as Approved

H8R DWG NUMBER **9 B**

H8R-DWG-S2G-GEN-1070

MAITLAND TO MINIMBAH - THIRD TRACK
DETAIL PLAN
 CH217km480 TO CH217km820

Sheet No.
70 OF 89
 Scale (A1):
 1:500



UNCONTROLLED DOCUMENT

PRELIMINARY

© 2009 Australian Rail Track Corporation Ltd.
 Drawing standard in accordance with Hunter 8 Alliance standards

Used on / Next higher assembly:

Alternate DMS number:

ARTC APPROVAL					
Approved By					
Signed:					
Rev	Date	Revision Description	Drawn	Checked	Approved
B	16.02.10	ISSUED FOR COMMENT			G.M.
A	10.02.10	ISSUED FOR COMMENT			T.M.

Designing Company:
GHD
 GHD Job Number:
 22-14471

Address:
 Level 3 GHD Tower, 24 Honeysuckle Drive
 Newcastle NSW 2300 Australia
 T 61 2 4979 9999 F 61 2 4979 9988
 E ntm@mail@ghd.com W www.ghd.com

Drawn:
T.MORTON

Designed:
R.STEPHENS

Design Check

Approved

This Drawing must not be used for Construction unless signed as Approved

H8R DWG NUMBER **9 B**

H8R-DWG-S2G-GEN-1072

MAITLAND TO MINIMBAH - THIRD TRACK
DETAIL PLAN
 CH218km160 TO CH218km500

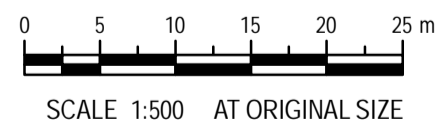
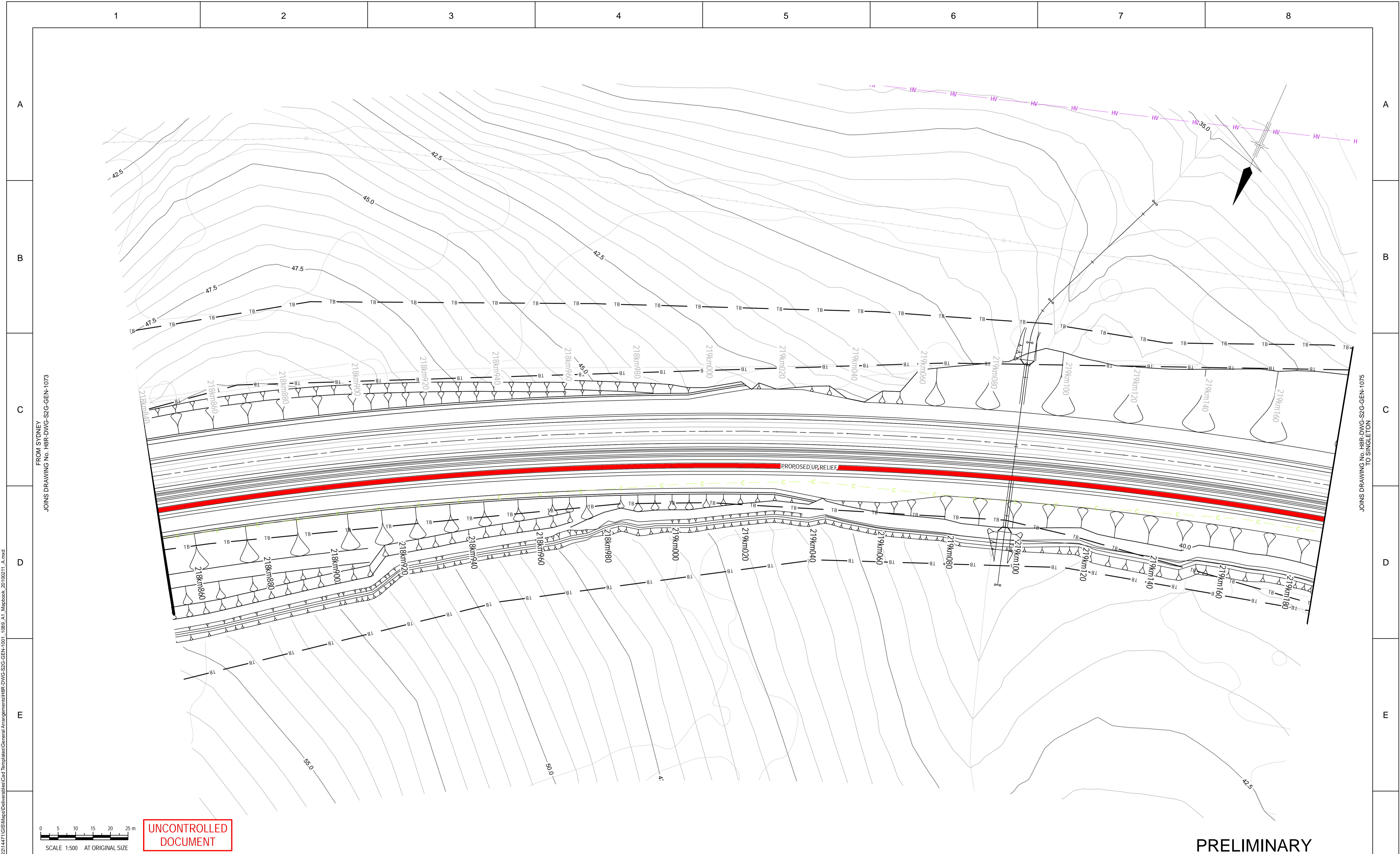
Sheet No.
72 OF 89

Scale (A1):
 1:500

PLOT DATE: 18/02/2010 10:58AM
 GHD FILEPATH: \\NTS\01\GHD\Draw\22\14471\GIS\Map\Barrabool\Cad Templates\General Arrangements\H8R-DWG-S2G-GEN-1072-1089_A1_Mapbook_20100211_A.mxd

FROM SYDNEY
 JOINS DRAWING No. H8R-DWG-S2G-GEN-1071

TO SINGLETON
 JOINS DRAWING No. H8R-DWG-S2G-GEN-1073



UNCONTROLLED DOCUMENT

PRELIMINARY

© 2009 Australian Rail Track Corporation Ltd.
Drawing standard in accordance with Hunter 8 Alliance standards

ARTC APPROVAL			
Approved By			
Signed:			
Approval Date	Rev	Date	Revision Description
	B	16.02.10	ISSUED FOR COMMENT
	A	10.02.10	ISSUED FOR COMMENT

Designing Company:	GHD	Address:	Level 3 GHD Tower, 24 Honeysuckle Drive Newcastle NSW 2300 Australia T 61 2 4979 9999 F 61 2 4979 9988 E ntmial@ghd.com W www.ghd.com
GHD Job Number:	22-14471	Drawn:	T.MORTON
		Designed:	R.STEPHENS
		Drafting Check:	Design Check
Approved:		Date:	

H8R DWG NUMBER **9B**

H8R-DWG-S2G-GEN-1074

MAITLAND TO MINIMBAH - THIRD TRACK
DETAIL PLAN
CH218km840 TO CH219km180

Sheet No.
74 OF 89

Scale (A1):
1:500

PLOT DATE: 18/02/2010 10:58AM
GHD FILEPATH: \\NTSMS01\GHD\Draw\22\14471\GIS\Map\General Arrangements\H8R-DWG-S2G-GEN-1074-1089_A1_Mapbook_20100211_A.mxd

FROM SYDNEY
JOINS DRAWING No. H8R-DWG-S2G-GEN-1073

TO SINGLETON
JOINS DRAWING No. H8R-DWG-S2G-GEN-1075