

1 2 3 4 5 6 7 8

A

B

C

D

E

A

B

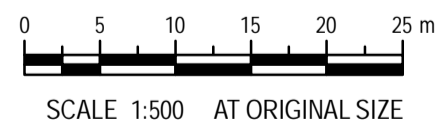
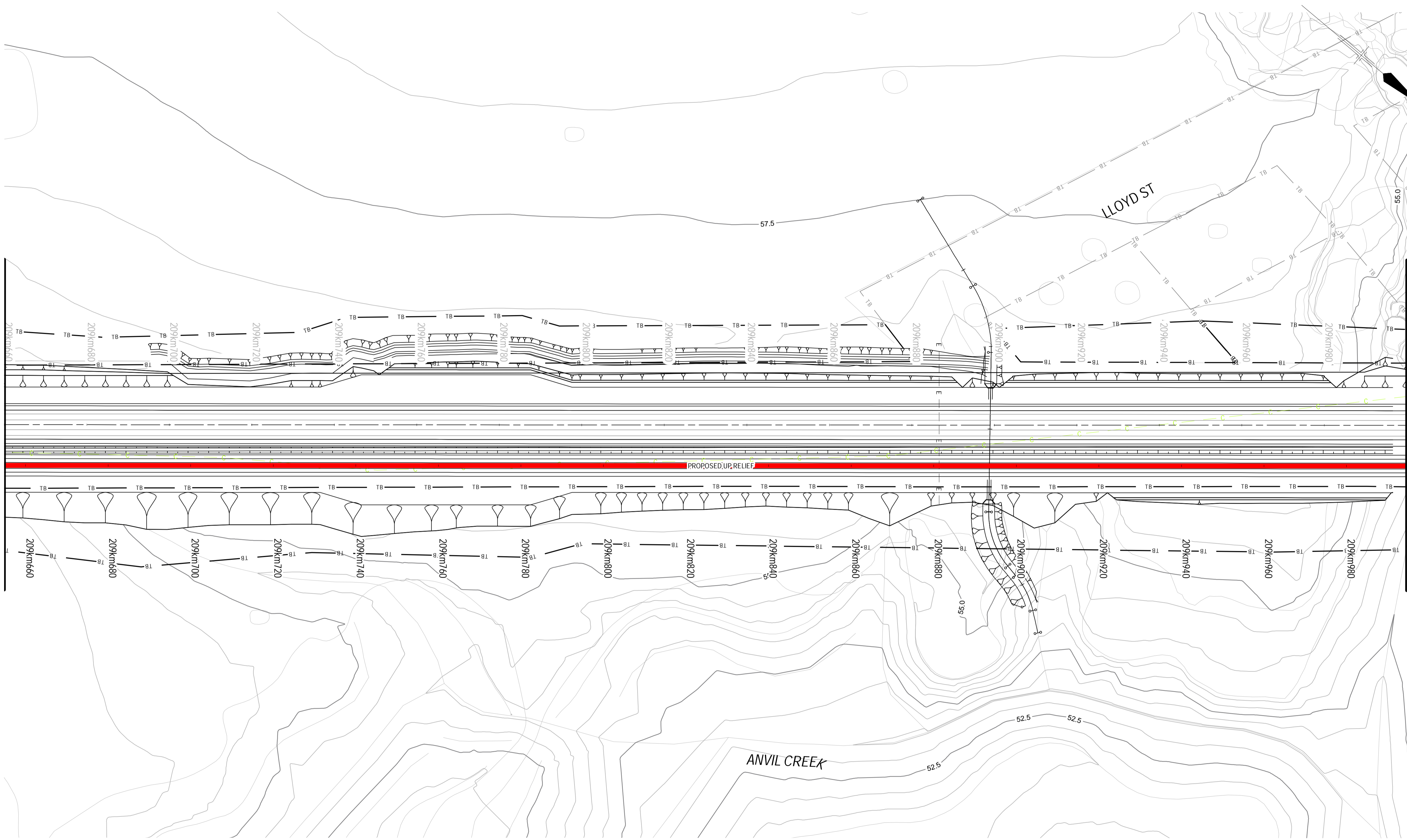
C

D

E

FROM SYDNEY  
JOINS DRAWING No. H8R-DWG-S2G-GEN-1046

JOINS DRAWING No. H8R-DWG-S2G-GEN-1048  
TO SINGLETON



**UNCONTROLLED DOCUMENT**

**PRELIMINARY**

© 2009 Australian Rail Track Corporation Ltd.  
Drawing standard in accordance with Hunter 8 Alliance standards

ARTC APPROVAL  
Approved By

Designing Company:  
GHD  
GHD Job Number:  
22-14471

Address:  
Level 3 GHD Tower, 24 Honeyuckle Drive  
Newcastle NSW 2300 Australia  
T 61 2 4979 9999 F 61 2 4979 9988  
E intmail@ghd.com W www.ghd.com

H8R DWG NUMBER **9B**  
**H8R-DWG-S2G-GEN-1047**

Used on / Next higher assembly:

Signed:

Drawn  
**T.MORTON**  
Drafting Check

Designed  
**R.STEPHENS**  
Design Check

MAITLAND TO MINIMBAH - THIRD TRACK  
**DETAIL PLAN**  
CH209km660 TO CH210km000

Rev	Date	Revision Description	Drawn	Checked	Approved
B	16.02.10	ISSUED FOR COMMENT			
A	10.02.10	ISSUED FOR COMMENT			

Approved  
Date

This Drawing must not be used for Construction unless signed as Approved.

Sheet No.  
**47 OF 89**  
Scale (A1):  
1:500

1 2 3 4 5 6 7 8

PLOT DATE: 18/02/2010 10:58AM  
GHD FILEPATH: \\HTRS\01\GHD\_Drawing\2214471\GIS\Map\General Arrangements\H8R-DWG-S2G-GEN-1047-1089\_A1\_Mapbook\_20100211\_A.mxd

1 2 3 4 5 6 7 8

A

B

C

D

E

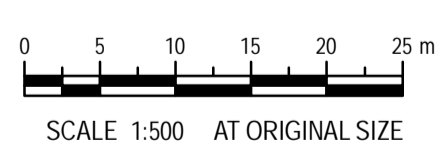
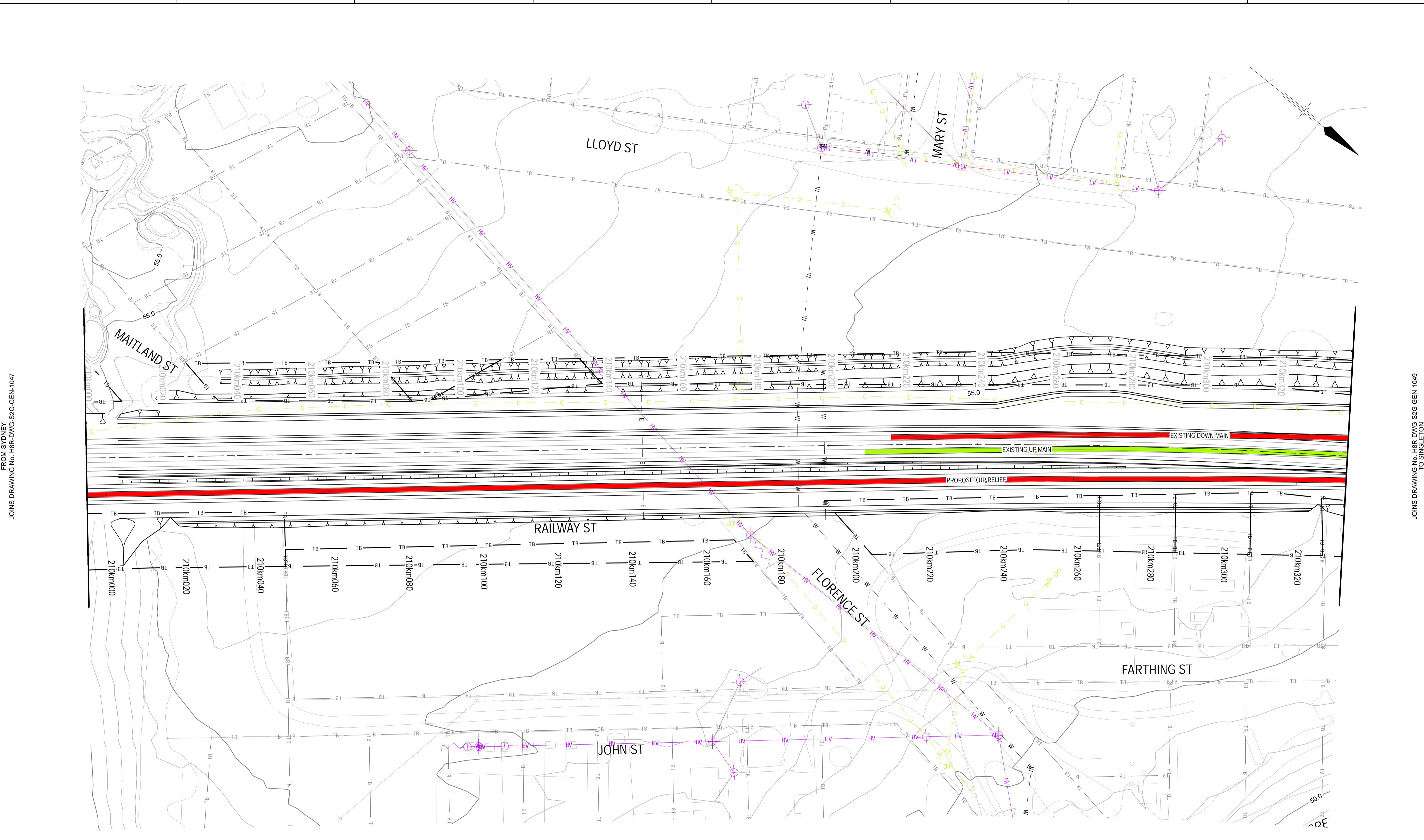
A

B

C

D

E



**UNCONTROLLED DOCUMENT**

**PRELIMINARY**

© 2009 Australian Rail Track Corporation Ltd.  
Drawing standard in accordance with Hunter 8 Alliance standards

ARTC APPROVAL  
Approved By

Used on / Next higher assembly:	
Alternate DMS number:	

Signed:

Rev	Date	Revision Description
B	16.02.10	ISSUED FOR COMMENT
A	10.02.10	ISSUED FOR COMMENT

G.M.  
T.M.

Designing Company:  
GHD  
GHD Job Number:  
22-14471

Address:  
Level 3 GHD Tower, 24 Honeysuckle Drive  
Newcastle NSW 2300 Australia  
T 61 2 4979 9999 F 61 2 4979 9988  
E ntm@mail@ghd.com W www.ghd.com

Drawn  
T.MORTON

Designed  
R.STEPHENS

Conditions of Use:  
This document may only be used by  
GHD's client (and any other person  
who GHD had agreed can use this  
document) for the purpose for which it  
was prepared and must not be used  
by any other person or for any other  
purpose.

Approved

This Drawing must not be  
used for Construction  
unless signed as Approved



H8R DWG NUMBER  
**9 B**  
**H8R-DWG-S2G-GEN-1048**

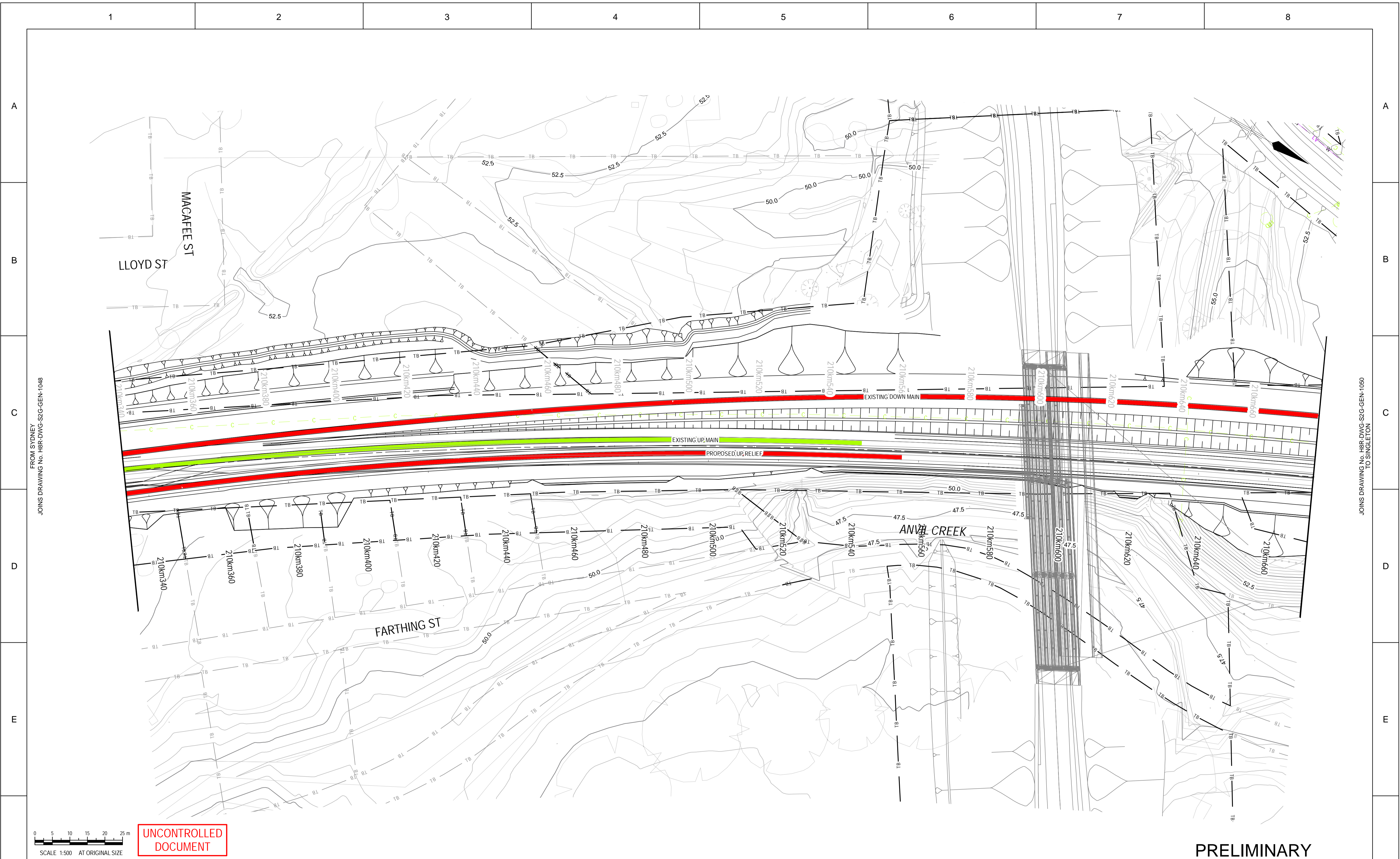
MAITLAND TO MINIMBAH - THIRD TRACK  
**DETAIL PLAN**  
**CH210km000 TO CH210km340**

Sheet No.  
**48 OF 89**  
Scale (A1):  
1:500

1 2 3 4 5 6 7 8

PLOT DATE: 18/02/2010 10:58AM GHD FILEPATH: \\NTS\01\GHD\_Data\2214471\GIS\Map\Arrangements\H8R-DWG-S2G-GEN-1048\_A1\_Mapbook\_20100211\_A.mxd

JOINS DRAWING No. H8R-DWG-S2G-GEN-1049 TO SINGLETON



0 5 10 15 20 25 m  
SCALE 1:500 AT ORIGINAL SIZE


**UNCONTROLLED DOCUMENT**

**PRELIMINARY**

© 2009 Australian Rail Track Corporation Ltd.  
Drawing standard in accordance with Hunter 8 Alliance standards

ARTC APPROVAL			
Approved By			
Signed:			
Rev	Date	Revision Description	Drawn
B	16.02.10	ISSUED FOR COMMENT	G.M.
A	10.02.10	ISSUED FOR COMMENT	T.M.
Approval Date		Checked	Approv.

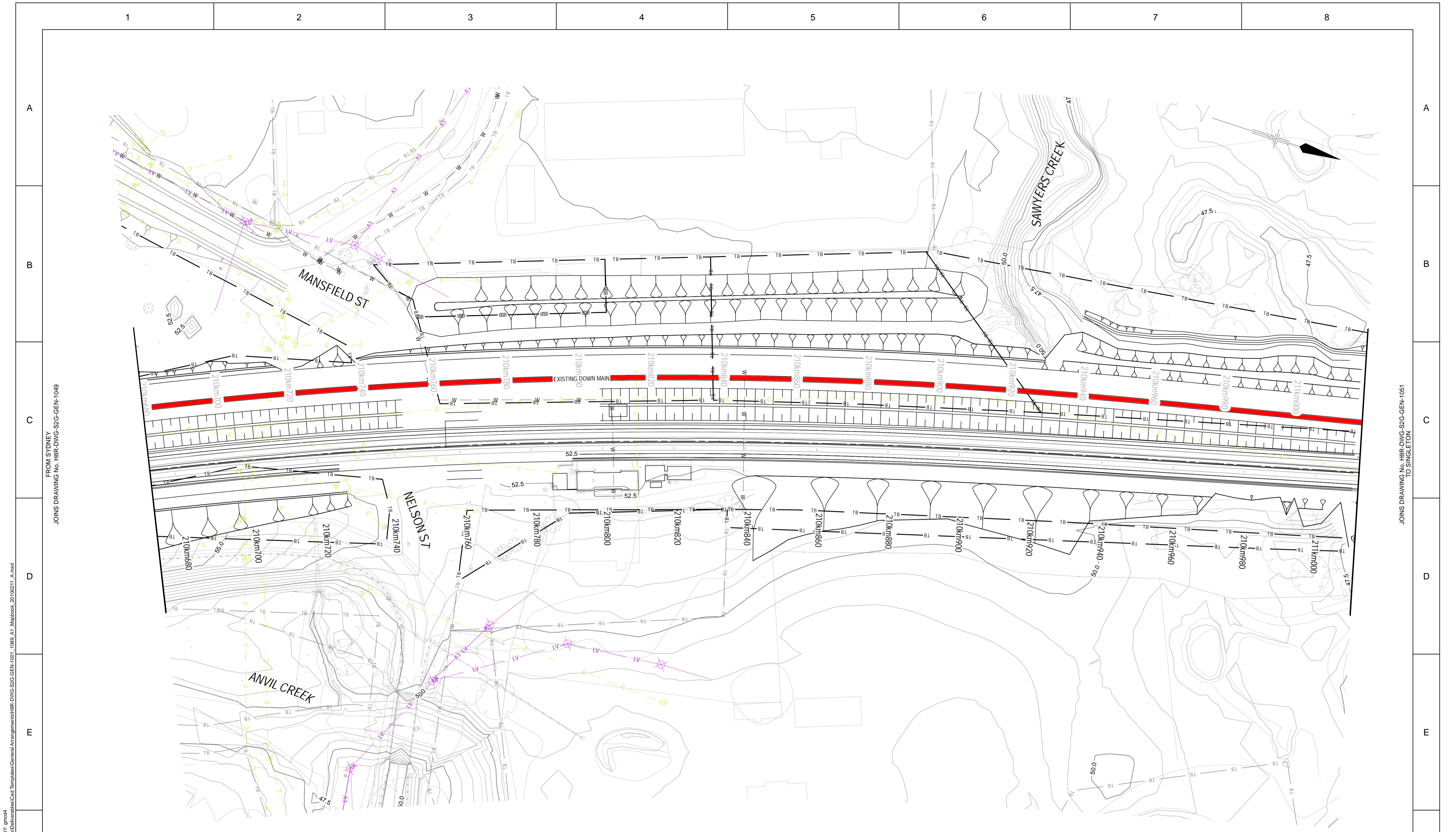
Designing Company: GHD GHD Job Number: 22-14471	Address: Level 3 GHD Tower, 24 Honeysuckle Drive Newcastle NSW 2300 Australia T 61 2 4979 9999 F 61 2 4979 9988 E ntmiall@ghd.com W www.ghd.com
Drawn T.MORTON	Designed R.STEPHENS
Drafting Check	Design Check
Approved	Date


**H8R-DWG-S2G-GEN-1049**  
 MAITLAND TO MINIMBAH - THIRD TRACK  
**DETAIL PLAN**  
 CH210km340 TO CH210km680  
 Sheet No.  
**49 OF 89**  
 Scale (A1):  
 1:500

PLOT DATE: 18/02/2010 10:58AM  
 GHD FILEPATH: \\NTS\01\GHD\_Data\2214471\GIS\Map\General Arrangements\H8R-DWG-S2G-GEN-1049\_A1\_Mapbook\_20100211\_A.mxd

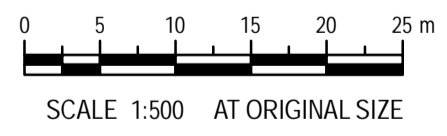
FROM SYDNEY  
 JOINS DRAWING No. H8R-DWG-S2G-GEN-1048

JOINS DRAWING No. H8R-DWG-S2G-GEN-1050  
 TO SINGLETON



FROM SYDNEY  
JOINS DRAWING No. H8R-DWG-S2G-GEN-1049

TO SINGLETON  
JOINS DRAWING No. H8R-DWG-S2G-GEN-1051



**UNCONTROLLED DOCUMENT**

**PRELIMINARY**

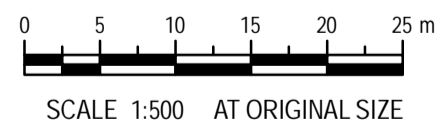
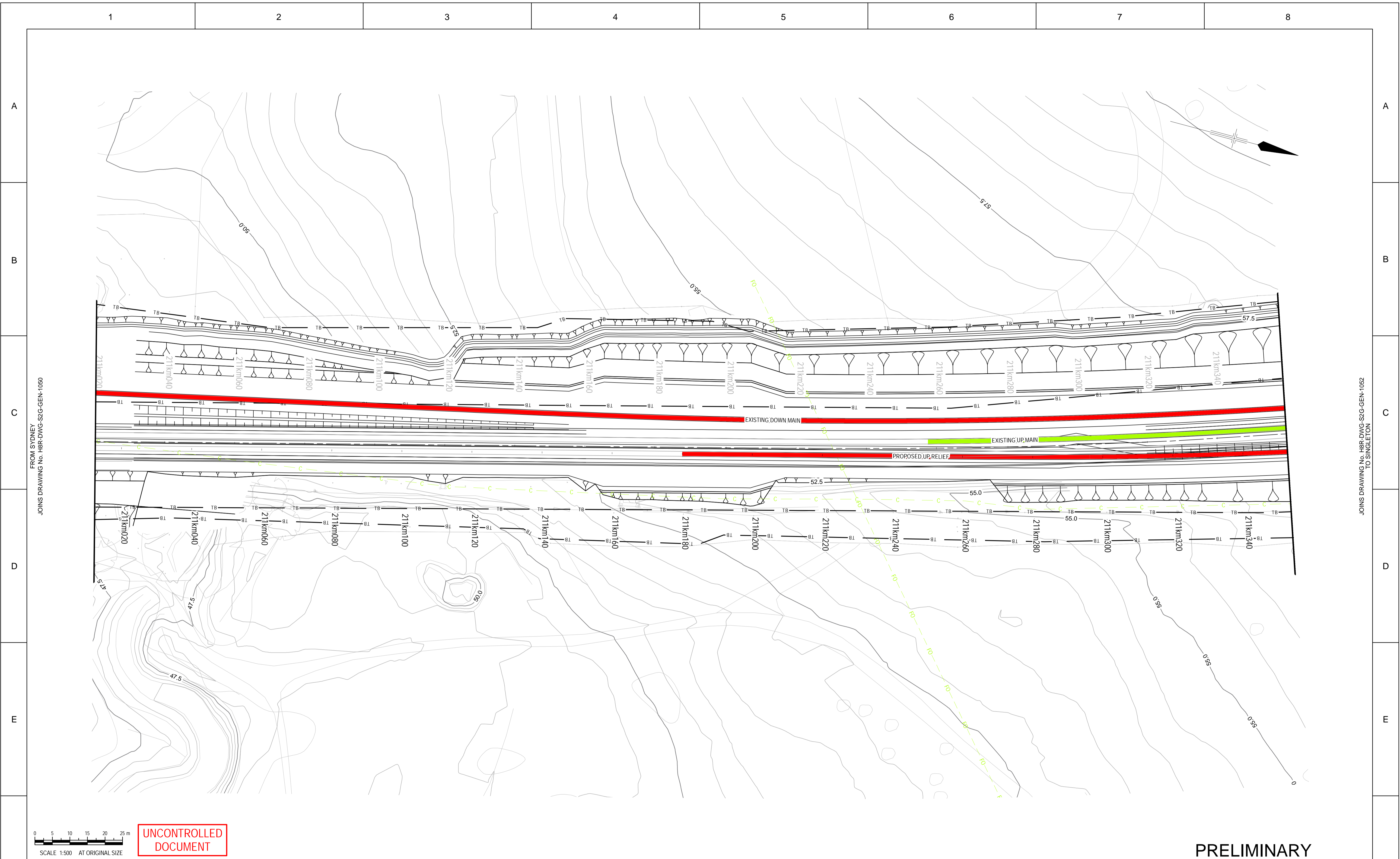
© 2009 Australian Rail Track Corporation Ltd.  
Drawing standard in accordance with Hunter 8 Alliance standards

ARTC APPROVAL		Approved By			
Signed:					
Rev	Date	Revision Description	Drawn	Checked	Approved
B	16.02.10	ISSUED FOR COMMENT	G.M.		
A	10.02.10	ISSUED FOR COMMENT	T.M.		

Designing Company: GHD GHD Job Number: 22-14471	Address: Level 3 GHD Tower, 24 Honeysuckle Drive Newcastle NSW 2300 Australia T 61 2 4979 9999 F 61 2 4979 9988 E ntmial@ghd.com W www.ghd.com
Drawn T.MORTON	Designed R.STEPHENS Design Check
Approved	
Date	

	H8R DWG NUMBER <b>9 B</b>	<b>H8R-DWG-S2G-GEN-1050</b>	Sheet No. <b>50 OF 89</b> Scale (A1): 1:500
	<b>MAITLAND TO MINIMBAH - THIRD TRACK DETAIL PLAN CH210km680 TO CH211km020</b>		

PLOT DATE: 18/02/2010 10:58AM  
GHD FILEPATH: \\NTSMS01\GHD\_Data\2214471\GIS\Map\Deliverables\Cad Templates\General Arrangements\H8R-DWG-S2G-GEN-1001-1089\_A1\_Mapbook\_20100211\_A.mxd



UNCONTROLLED DOCUMENT

PRELIMINARY

© 2009 Australian Rail Track Corporation Ltd.  
 Drawing standard in accordance with Hunter 8 Alliance standards  
 Used on / Next higher assembly:  
 Alternate DMS number:

ARTC APPROVAL					
Approved By					
Signed:					
Rev	Date	Revision Description	Drawn	Checked	Approved
B	16.02.10	ISSUED FOR COMMENT	G.M.		
A	10.02.10	ISSUED FOR COMMENT	T.M.		

Designing Company:  
 GHD  
 GHD Job Number:  
 22-14471

Address:  
 Level 3 GHD Tower, 24 Honeysuckle Drive  
 Newcastle NSW 2300 Australia  
 T 61 2 4979 9999 F 61 2 4979 9988  
 E ntm@mail@ghd.com W www.ghd.com

Drawn:  
 T.MORTON

Designed:  
 R.STEPHENS

Design Check:  
 DESIGN CHECK

Approved:  
 Date

Conditions of Use:  
 This document may only be used by GHD's client (and any other person who GHD had agreed can use this document) for the purpose for which it was prepared and must not be used by any other person or for any other purpose.

This Drawing must not be used for Construction unless signed as Approved

H8R DWG NUMBER **9B**

H8R-DWG-S2G-GEN-1051

MAITLAND TO MINIMBAH - THIRD TRACK  
 DETAIL PLAN  
 CH211km020 TO CH211km360

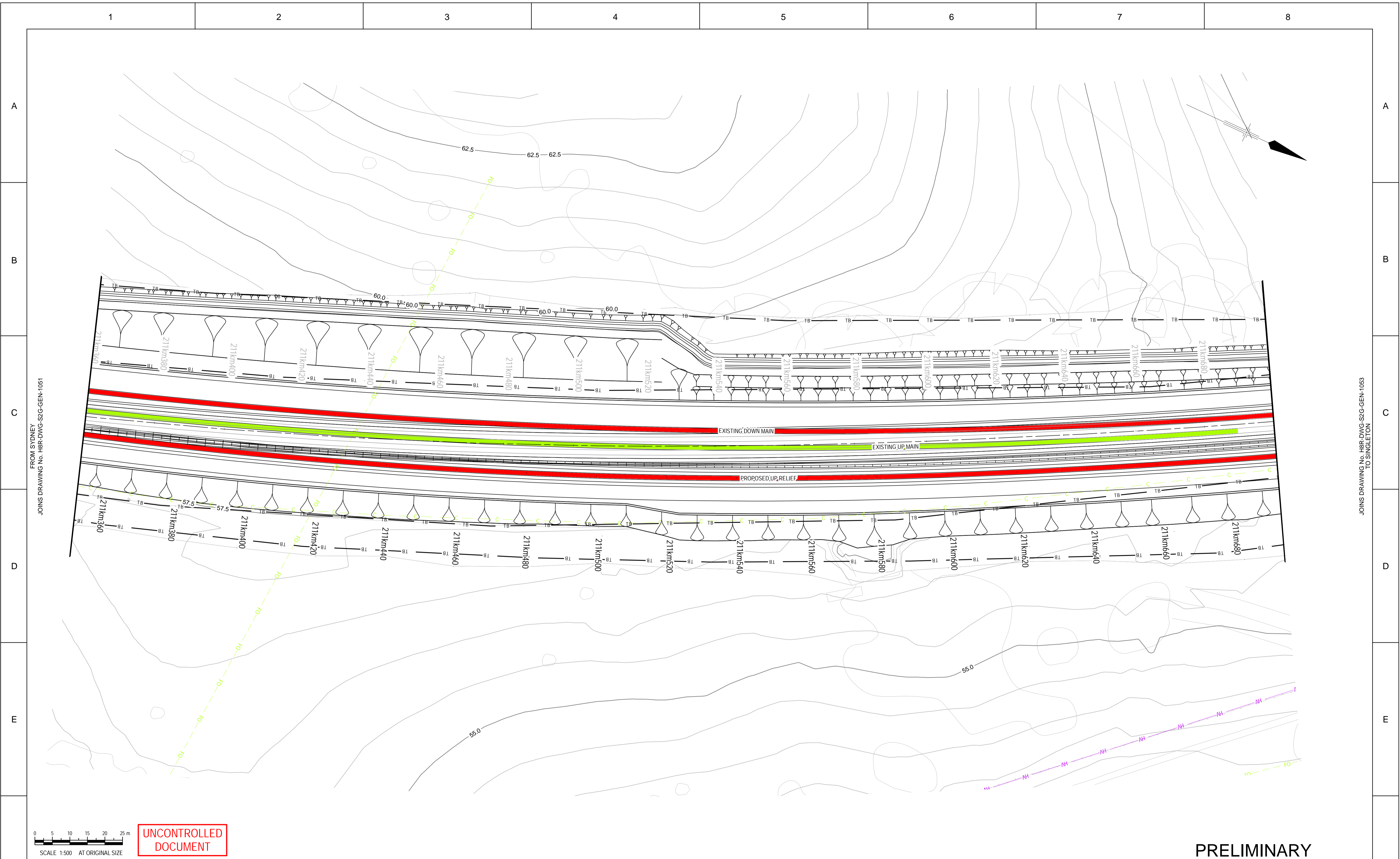
Sheet No.  
**51 OF 89**

Scale (A1):  
 1:500

PLOT DATE: 18/02/2010 10:58AM  
 GHD FILE PATH: \\NTSMS01\GHD\Draw\2214471\GIS\Map\General Arrangements\H8R-DWG-S2G-GEN-1001-1089\_A1\_Mapbook\_20100211\_A.mxd

FROM SYDNEY  
 JOINS DRAWING No. H8R-DWG-S2G-GEN-1050

JOINS DRAWING No. H8R-DWG-S2G-GEN-1052  
 TO SINGLETON



PLOTTED BY: gmod4  
 GHD FILEPATH: \\NTS\01\GHD\Drawings\General Arrangements\H8R-DWG-S2G-GEN-1001-1089\_A1\_Mapbook\_20100211\_A.mxd

JOINS DRAWING No. H8R-DWG-S2G-GEN-1053  
 TO SINGLETON

© 2009 Australian Rail Track Corporation Ltd.  
 Drawing standard in accordance with Hunter 8 Alliance standards

Used on / Next higher assembly:

Alternate DMS number:

ARTC APPROVAL					
Approved By					
Signed:					
Rev	Date	Revision Description	Drawn	Checked	Approved
B	16.02.10	ISSUED FOR COMMENT	G.M.		
A	10.02.10	ISSUED FOR COMMENT	T.M.		

Designing Company:  
 GHD  
 GHD Job Number:  
 22-14471

Address:  
 Level 3 GHD Tower, 24 Honeysuckle Drive  
 Newcastle NSW 2300 Australia  
 T 61 2 4979 9999 F 61 2 4979 9988  
 E ntm@mail@ghd.com W www.ghd.com

Drawn:  
 T.MORTON

Designed:  
 R.STEPHENS

Design Check:  
 Design Check

Approved:  
 Date

Conditions of Use:  
 This document may only be used by GHD's client (and any other person who GHD had agreed can use this document) for the purpose for which it was prepared and must not be used by any other person or for any other purpose.

This Drawing must not be used for Construction unless signed as Approved

**Hunter 8 ALLIANCE**

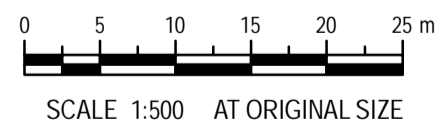
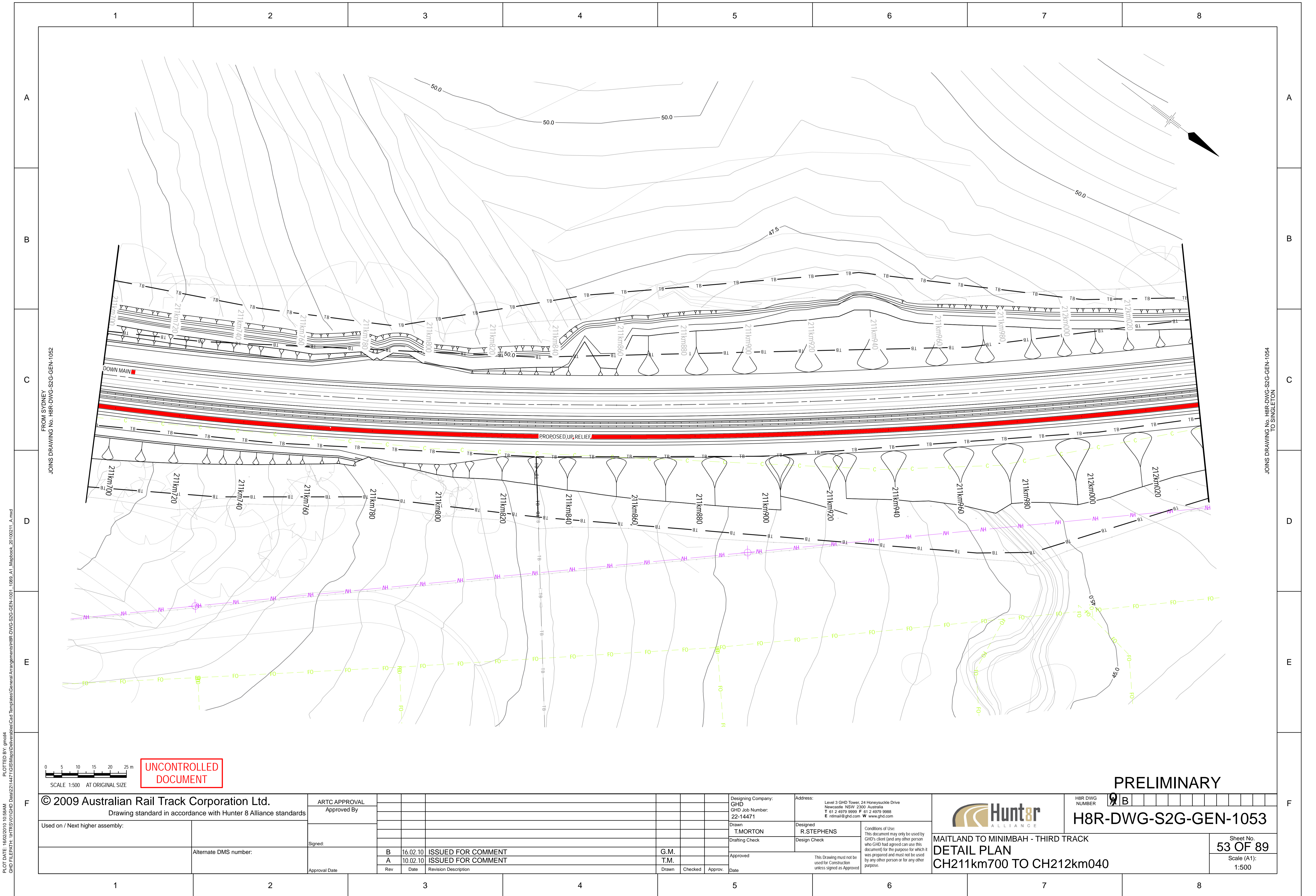
H8R DWG NUMBER: **9B**

**H8R-DWG-S2G-GEN-1052**

MAITLAND TO MINIMBAH - THIRD TRACK  
 DETAIL PLAN  
 CH211km360 TO CH211km700

Sheet No.  
**52 OF 89**  
 Scale (A1):  
 1:500

PRELIMINARY



**UNCONTROLLED DOCUMENT**

**PRELIMINARY**

**© 2009 Australian Rail Track Corporation Ltd.**  
 Drawing standard in accordance with Hunter 8 Alliance standards

Used on / Next higher assembly:

Alternate DMS number:

ARTC APPROVAL							
Approved By							
Signed:							
Approval Date	Rev	Date	Revision Description	Drawn	Checked	Approved	Date
	B	16.02.10	ISSUED FOR COMMENT				
	A	10.02.10	ISSUED FOR COMMENT	G.M.			

Designing Company: GHD  
 GHD Job Number: 22-14471

Address: Level 3 GHD Tower, 24 Honeyucke Drive  
 Newcastle NSW 2300 Australia  
 T 61 2 4979 9999 F 61 2 4979 9988  
 E ntm@mail@ghd.com W www.ghd.com

Drawn: T.MORTON  
 Drafting Check

Designed: R.STEPHENS  
 Design Check

Approved: \_\_\_\_\_  
 Date: \_\_\_\_\_

Conditions of Use:  
 This document may only be used by GHD's client (and any other person who GHD had agreed can use this document) for the purpose for which it was prepared and must not be used by any other person or for any other purpose.

H8R DWG NUMBER **9B**

**H8R-DWG-S2G-GEN-1053**

MAITLAND TO MINIMBAH - THIRD TRACK  
**DETAIL PLAN**  
**CH211km700 TO CH212km040**

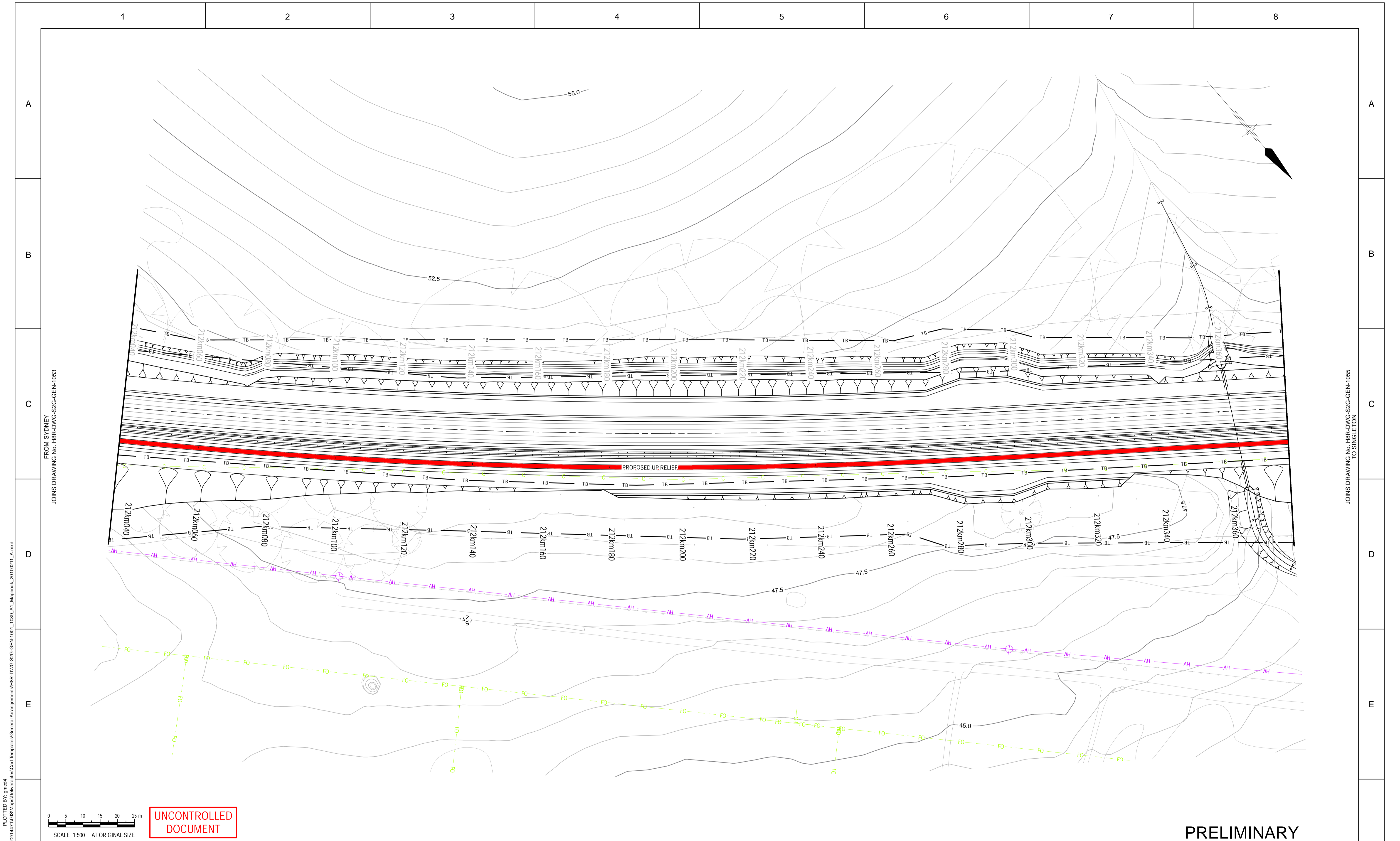
Sheet No.  
**53 OF 89**

Scale (A1):  
**1:500**

PLOT DATE: 18/02/2010 10:58AM  
 GHD FILEPATH: \\NTS\01\GHD\_DWG\2114471\GIS\Map\Bales\Cad Templates\General Arrangements\H8R-DWG-S2G-GEN-1001-1089\_A1\_Mapbook\_20100211\_A.mxd

FROM SYDNEY  
 JOINS DRAWING No. H8R-DWG-S2G-GEN-1052

TO SINGLETON  
 JOINS DRAWING No. H8R-DWG-S2G-GEN-1054



© 2009 Australian Rail Track Corporation Ltd.  
Drawing standard in accordance with Hunter 8 Alliance standards

Used on / Next higher assembly:

Alternate DMS number:

ARTC APPROVAL			
Approved By			
Signed:			
Approval Date	Rev	Date	Revision Description
	B	16.02.10	ISSUED FOR COMMENT
	A	10.02.10	ISSUED FOR COMMENT

Designing Company:  
GHD  
GHD Job Number:  
22-14471

Address:  
Level 3 GHD Tower, 24 Honeyesuckle Drive  
Newcastle NSW 2300 Australia  
T 61 2 4979 9999 F 61 2 4979 9988  
E ntmial@ghd.com W www.ghd.com

Drawn  
T.MORTON

Designed  
R.STEPHENS

Design Check

Approved

Date

Conditions of Use:  
This document may only be used by GHD's client (and any other person who GHD had agreed can use this document) for the purpose for which it was prepared and must not be used by any other person or for any other purpose.

This Drawing must not be used for Construction unless signed as Approved

**PRELIMINARY**

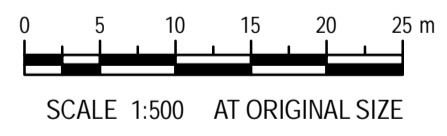
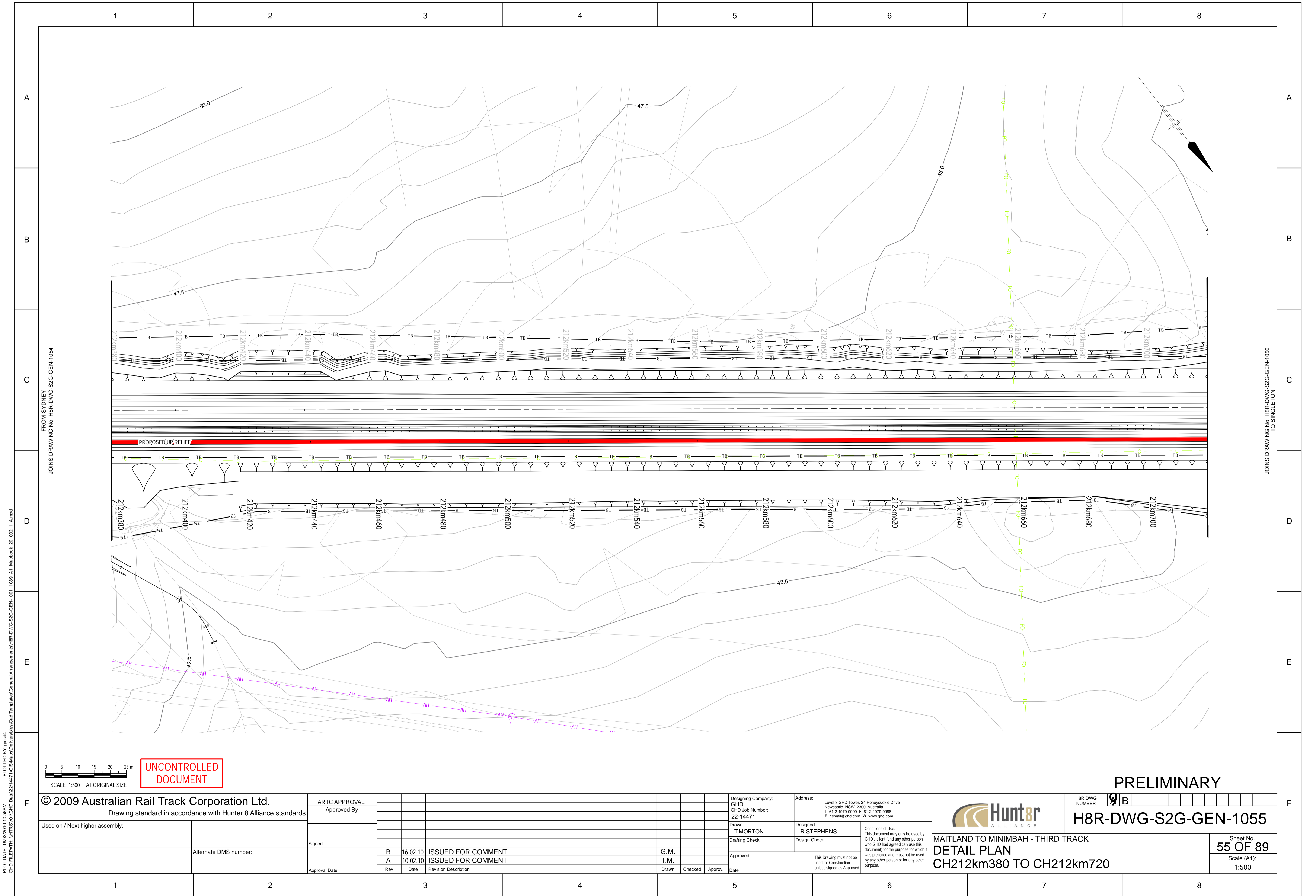
H8R DWG NUMBER **9 B**

**H8R-DWG-S2G-GEN-1054**

MAITLAND TO MINIMBAH - THIRD TRACK  
**DETAIL PLAN**  
CH212km040 TO CH212km380

Sheet No.  
**54 OF 89**

Scale (A1):  
1:500



UNCONTROLLED DOCUMENT

PRELIMINARY

© 2009 Australian Rail Track Corporation Ltd.  
Drawing standard in accordance with Hunter 8 Alliance standards

ARTC APPROVAL			
Approved By			
Signed:			
Approval Date	Rev	Date	Revision Description
	B	16.02.10	ISSUED FOR COMMENT
	A	10.02.10	ISSUED FOR COMMENT

Designing Company: GHD GHD Job Number: 22-14471	Address: Level 3 GHD Tower, 24 Honeysuckle Drive Newcastle NSW 2300 Australia T 61 2 4979 9999 F 61 2 4979 9988 E ntm@mail@ghd.com W www.ghd.com
Drawn T.MORTON	Designed R.STEPHENS
Drafting Check	Design Check
Approved	Date

H8R-DWG-S2G-GEN-1055

MAITLAND TO MINIMBAH - THIRD TRACK

**DETAIL PLAN**

CH212km380 TO CH212km720

Sheet No.  
**55 OF 89**

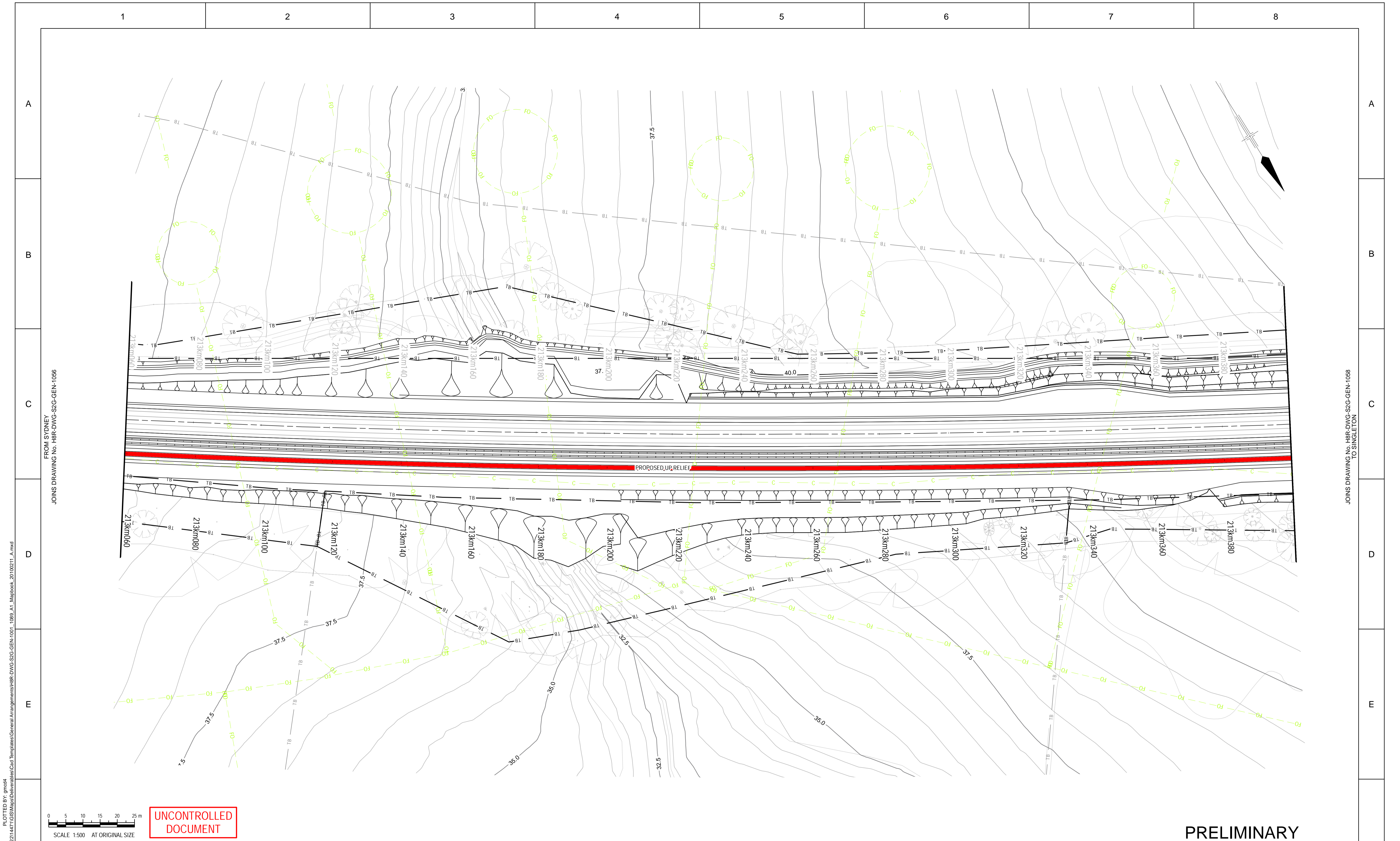
Scale (A1):  
1:500

PLOT DATE: 16/02/2010 10:58AM  
GHD FILEPATH: \\NTS\01\GHD\Draw\22\14471\GIS\Map\General Arrangements\H8R-DWG-S2G-GEN-1055\_A1\_Mapbook\_20100211\_A.mxd

FROM SYDNEY  
JOINS DRAWING No. H8R-DWG-S2G-GEN-1054

JOINS DRAWING No. H8R-DWG-S2G-GEN-1056  
TO SINGLETON





© 2009 Australian Rail Track Corporation Ltd.  
Drawing standard in accordance with Hunter 8 Alliance standards

Used on / Next higher assembly:

Alternate DMS number:

ARTC APPROVAL			
Approved By			
Signed:			
Approval Date	Rev	Date	Revision Description
	B	16.02.10	ISSUED FOR COMMENT
	A	10.02.10	ISSUED FOR COMMENT

Designing Company:  
GHD  
GHD Job Number:  
22-14471

Address:  
Level 3 GHD Tower, 24 Honeysuckle Drive  
Newcastle NSW 2300 Australia  
T 61 2 4979 9999 F 61 2 4979 9988  
E intmail@ghd.com W www.ghd.com

Drawn  
T.MORTON

Designed  
R.STEPHENS

Design Check

Approved

This Drawing must not be used for Construction unless signed as Approved

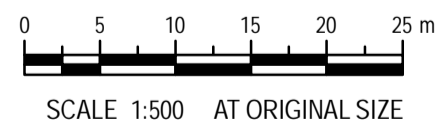
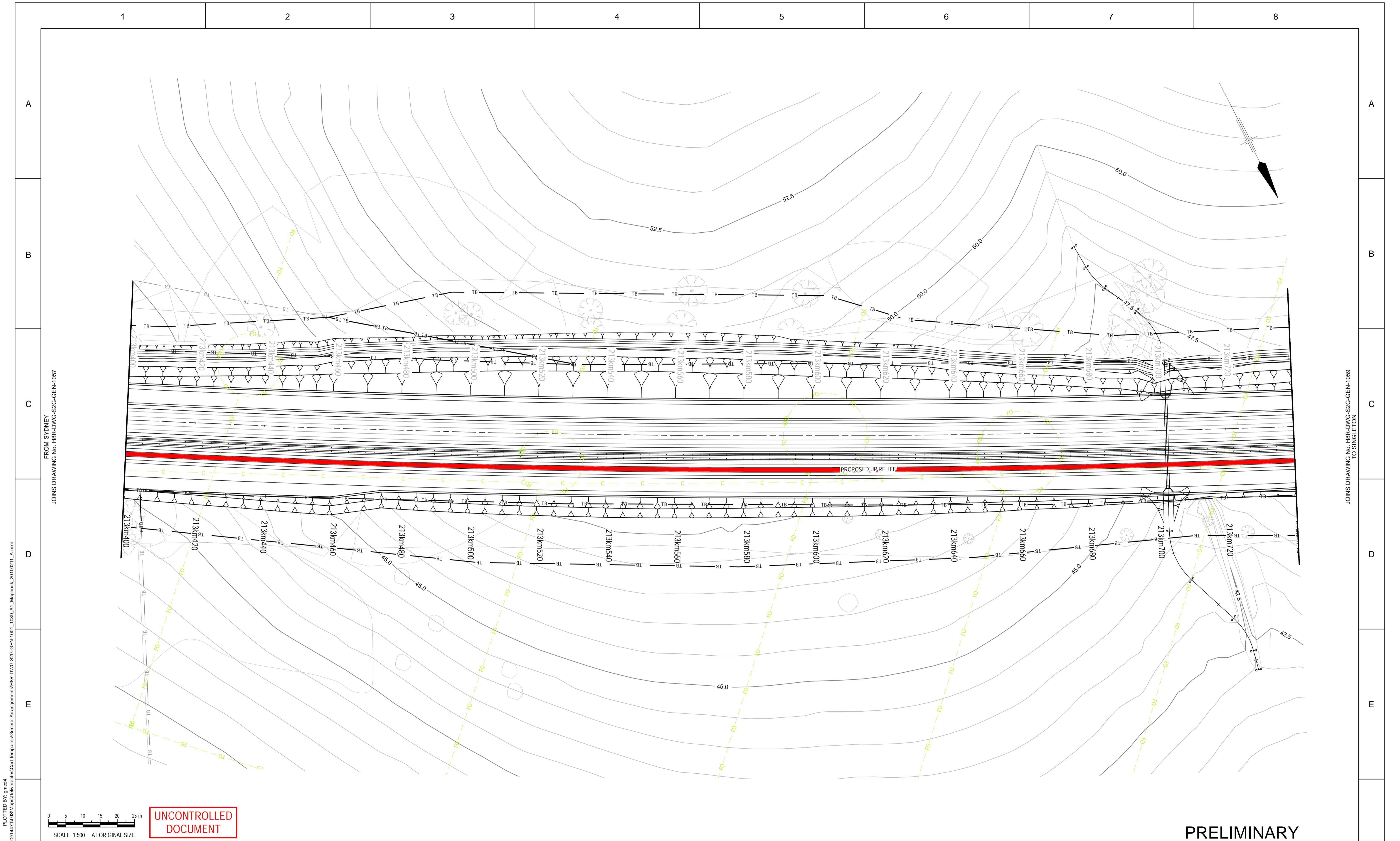
**Hunter 8 ALLIANCE**

H8R DWG NUMBER **9B**

**H8R-DWG-S2G-GEN-1057**

MAITLAND TO MINIMBAH - THIRD TRACK  
**DETAIL PLAN**  
CH213km060 TO CH213km400

Sheet No.  
**57 OF 89**  
Scale (A1):  
1:500



**UNCONTROLLED DOCUMENT**

**PRELIMINARY**

© 2009 Australian Rail Track Corporation Ltd.  
Drawing standard in accordance with Hunter 8 Alliance standards

Used on / Next higher assembly:	
Alternate DMS number:	

ARTC APPROVAL					
Approved By:					
Signed:					
Approval Date	Rev	Date	Revision Description	Drawn	Checked
	B	16.02.10	ISSUED FOR COMMENT	G.M.	
	A	10.02.10	ISSUED FOR COMMENT	T.M.	

Designing Company:	GHD	Address:	Level 3 GHD Tower, 24 Honeysuckle Drive Newcastle NSW 2300 Australia T 61 2 4979 9999 F 61 2 4979 9988 E ntmial@ghd.com W www.ghd.com
GHD Job Number:	22-14471	Drawn:	T.MORTON
		Designed:	R.STEPHENS
		Design Check:	Design Check
Approved:		This Drawing must not be used for Construction unless signed as Approved	
Date:		Conditions of Use: This document may only be used by GHD's client (and any other person who GHD had agreed can use this document) for the purpose for which it was prepared and must not be used by any other person or for any other purpose.	

	H8R DWG NUMBER	9 B
	<b>H8R-DWG-S2G-GEN-1058</b>	
<b>MAILLAND TO MINIMBAH - THIRD TRACK</b>		Sheet No.
<b>DETAIL PLAN</b>		<b>58 OF 89</b>
<b>CH213km400 TO CH213km740</b>		Scale (A1):
		1:500

PLOT DATE: 18/02/2010 10:58AM  
 GHD FILEPATH: \\NTS\01\GHD\Draw\2214471\GIS\Map\General Arrangements\H8R-DWG-S2G-GEN-1058\_A1\_Mapbook\_20100211\_A.mxd

FROM SYDNEY  
 JOINS DRAWING No. H8R-DWG-S2G-GEN-1057

TO SINGLETON  
 JOINS DRAWING No. H8R-DWG-S2G-GEN-1059







© 2009 Australian Rail Track Corporation Ltd.  
 Drawing standard in accordance with Hunter 8 Alliance standards

ARTC APPROVAL			
Approved By			
Signed:			
Rev	Date	Revision Description	Drawn
B	16.02.10	ISSUED FOR COMMENT	G.M.
A	10.02.10	ISSUED FOR COMMENT	T.M.
Approval Date			

Designing Company:  
 GHD  
 GHD Job Number:  
 22-14471

Address:  
 Level 3 GHD Tower, 24 Honeyuckle Drive  
 Newcastle NSW 2300 Australia  
 T 61 2 4979 9999 F 61 2 4979 9988  
 E rnt@mail@ghd.com W www.ghd.com

Drawn  
 T.MORTON

Designed  
 R.STEPHENS

Design Check

Approved

This Drawing must not be used for Construction unless signed as Approved

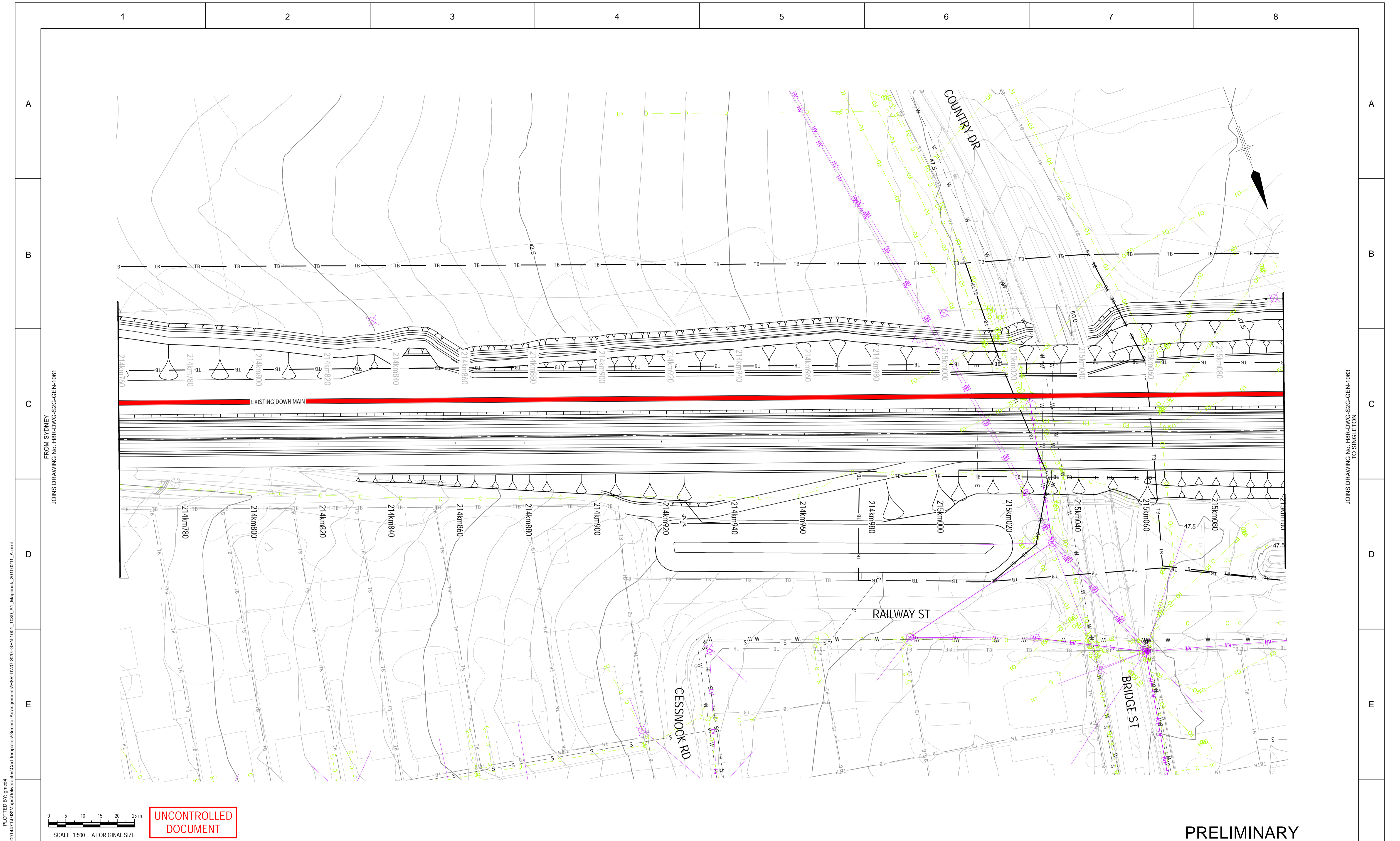
**Hunter 8 ALLIANCE**

H8R DWG NUMBER **9B**

**H8R-DWG-S2G-GEN-1061**

MAITLAND TO MINIMBAH - THIRD TRACK  
 DETAIL PLAN  
 CH214km420 TO CH214km760

Sheet No.  
**61 OF 89**  
 Scale (A1):  
 1:500



**UNCONTROLLED DOCUMENT**

**PRELIMINARY**

© 2009 Australian Rail Track Corporation Ltd.  
Drawing standard in accordance with Hunter 8 Alliance standards

ARTC APPROVAL  
Approved By

Used on / Next higher assembly:	
Alternate DMS number:	

Signed:	
Approval Date	

Rev	Date	Revision Description
B	16.02.10	ISSUED FOR COMMENT
A	10.02.10	ISSUED FOR COMMENT

Drawn	T.MORTON
Designed	R.STEPHENS
Drafting Check	
Design Check	

Designing Company:  
GHD  
GHD Job Number:  
22-14471

Address:  
Level 3 GHD Tower, 24 Honeysuckle Drive  
Newcastle NSW 2300 Australia  
T 61 2 4979 9999 F 61 2 4979 9988  
E ntmil@ghd.com W www.ghd.com

Approved

This Drawing must not be used for Construction unless signed as Approved

Conditions of Use:  
This document may only be used by GHD's client (and any other person who GHD had agreed can use this document) for the purpose for which it was prepared and must not be used by any other person or for any other purpose.

	H8R DWG NUMBER	9 B
	<b>H8R-DWG-S2G-GEN-1062</b>	
MAITLAND TO MINIMBAH - THIRD TRACK <b>DETAIL PLAN</b> CH214km760 TO CH215km100		Sheet No. <b>62 OF 89</b> Scale (A1): 1:500

PLOT DATE: 18/02/2010 10:58AM  
 GHD FILEPATH: \\NTSRV01\GHD\_Data\2214471\GIS\Map\Barricade\Cad Templates\General Arrangements\H8R-DWG-S2G-GEN-1001-1089\_A1\_Mapbook\_20100211\_A.mxd

FROM SYDNEY  
 JOINS DRAWING No. H8R-DWG-S2G-GEN-1061

TO SINGLETON  
 JOINS DRAWING No. H8R-DWG-S2G-GEN-1063