

0 5 10 15 20 25 m
SCALE 1:500 AT ORIGINAL SIZE

UNCONTROLLED DOCUMENT

PRELIMINARY

© 2009 Australian Rail Track Corporation Ltd.
Drawing standard in accordance with Hunter 8 Alliance standards

ARTC APPROVAL
Approved By

Used on / Next higher assembly:

Alternate DMS number:

Signed:
Approval Date

Rev	Date	Revision Description	Drawn	Checked	Approved
B	16.02.10	ISSUED FOR COMMENT	G.M.		
A	10.02.10	ISSUED FOR COMMENT	T.M.		

Designing Company:
GHD
GHD Job Number:
22-14471

Address:
Level 3 GHD Tower, 24 Honeysuckle Drive
Newcastle NSW 2300 Australia
T 61 2 4979 9999 F 61 2 4979 9988
E ntm@mail@ghd.com W www.ghd.com

Drawn
T.MORTON
Drafting Check

Designed
R.STEPHENS
Design Check

Approved
Date

This Drawing must not be used for Construction unless signed as Approved

Conditions of Use:
This document may only be used by GHD's client (and any other person who GHD had agreed can use this document) for the purpose for which it was prepared and must not be used by any other person or for any other purpose.



H8R DWG NUMBER 9 B
H8R-DWG-S2G-GEN-1036

MAITLAND TO MINIMBAH - THIRD TRACK
DETAIL PLAN
CH205km920 TO CH206km260

Sheet No.
36 OF 89
Scale (A1):
1:500

PLOT DATE: 18/02/2010 10:58AM
GHD FILEPATH: \\NTSRV01\GHD_Data\2214471\GIS\Map\Deliverables\Cad Templates\General Arrangements\H8R-DWG-S2G-GEN-1036_A1_Mapbook_20100211_A.mxd

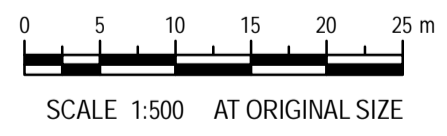
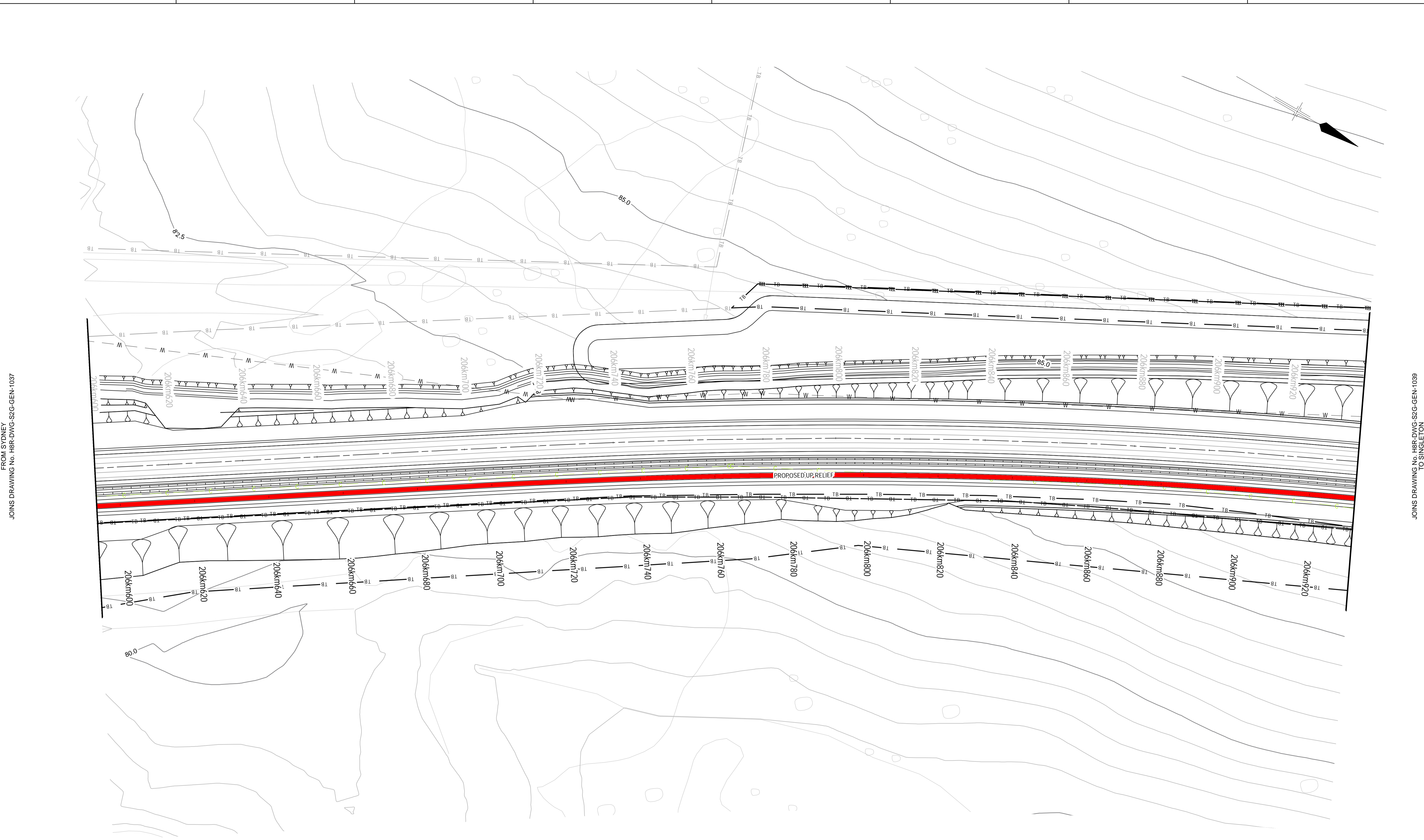
FROM SYDNEY
JOINS DRAWING No. H8R-DWG-S2G-GEN-1035

JOINS DRAWING No. H8R-DWG-S2G-GEN-1037
TO SINGLETON

1 2 3 4 5 6 7 8

A
B
C
D
E

A
B
C
D
E



UNCONTROLLED DOCUMENT

PRELIMINARY

© 2009 Australian Rail Track Corporation Ltd.
Drawing standard in accordance with Hunter 8 Alliance standards

Used on / Next higher assembly:

Alternate DMS number:

ARTC APPROVAL			
Approved By			
Signed:			
Rev	Date	Revision Description	Drawn
B	16.02.10	ISSUED FOR COMMENT	G.M.
A	10.02.10	ISSUED FOR COMMENT	T.M.
Approval Date		Checked	Approved

Designing Company: GHD
GHD Job Number: 22-14471

Address: Level 3 GHD Tower, 24 Honeysuckle Drive
Newcastle NSW 2300 Australia
T 61 2 4979 9999 F 61 2 4979 9988
E ntm@mail@ghd.com W www.ghd.com

Drawn: T.MORTON
Designed: R.STEPHENS
Design Check: R.STEPHENS

Approved: _____
Date: _____

Conditions of Use: This document may only be used by GHD's client (and any other person who GHD had agreed can use this document) for the purpose for which it was prepared and must not be used by any other person or for any other purpose.

H8R DWG NUMBER: **9 B**

H8R-DWG-S2G-GEN-1038

Hunter ALLIANCE

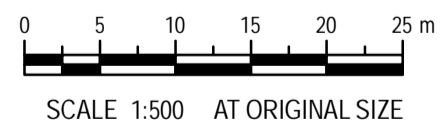
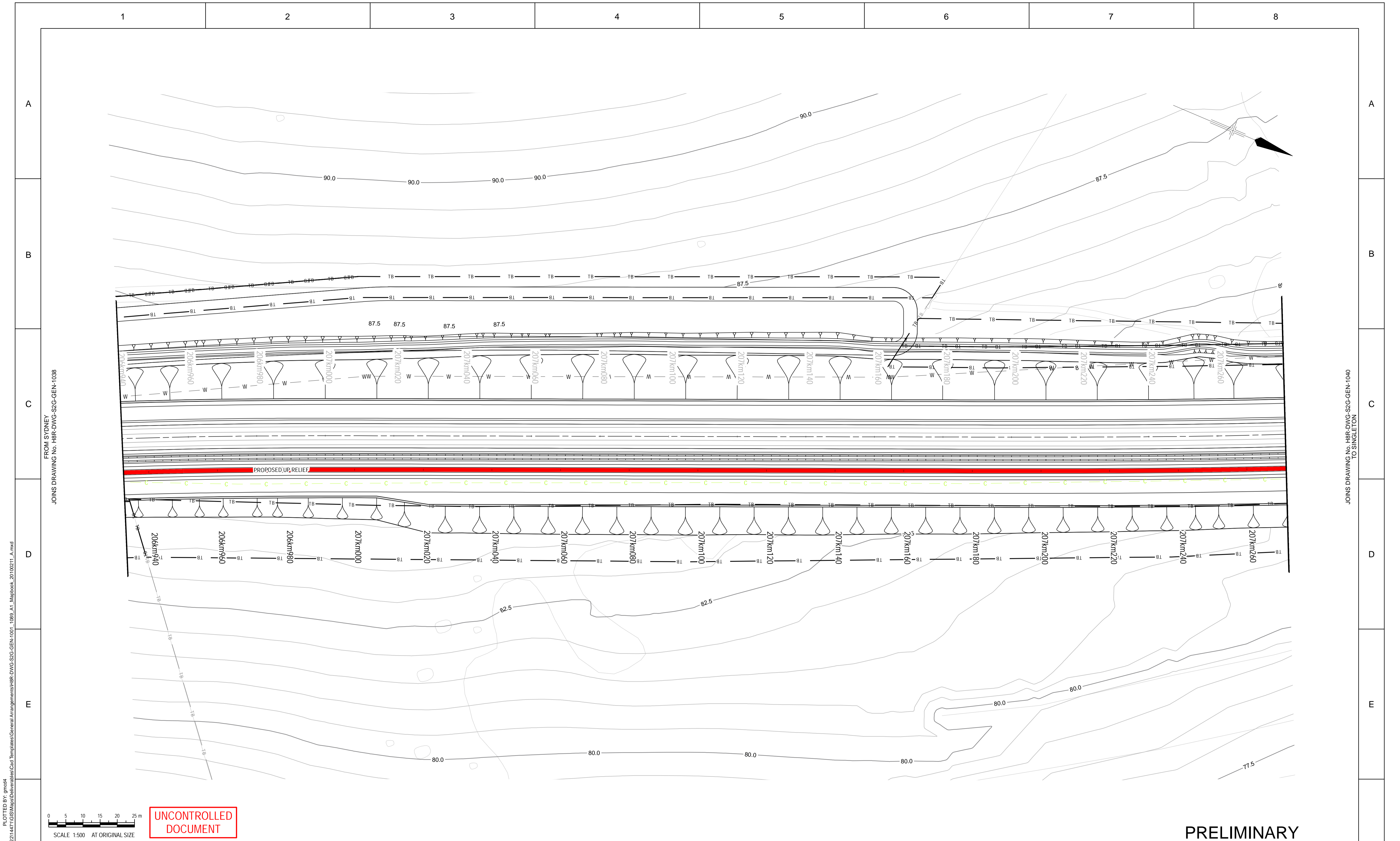
MAITLAND TO MINIMBAH - THIRD TRACK
DETAIL PLAN
CH206km600 TO CH206km940

Sheet No. **38 OF 89**
Scale (A1): 1:500

1 2 3 4 5 6 7 8

PLOT DATE: 18/02/2010 10:58AM
GHD FILEPATH: \\NTSMS\01\GHD_Drawing\22\14471\GIS\Map\General Arrangements\H8R-DWG-S2G-GEN-1038_A1_Mapbook_20100211_A.mxd

JOINS DRAWING No. H8R-DWG-S2G-GEN-1038 TO SINGLETON



UNCONTROLLED DOCUMENT

PRELIMINARY

© 2009 Australian Rail Track Corporation Ltd. Drawing standard in accordance with Hunter 8 Alliance standards		ARTC APPROVAL Approved By: _____ Signed: _____ Approval Date: _____		Designing Company: GHD GHD Job Number: 22-14471		Address: Level 3 GHD Tower, 24 Honeysuckle Drive Newcastle, NSW 2300 Australia T 61 2 4979 9999 F 61 2 4979 9988 E rtm@mail@ghd.com W www.ghd.com		H8R DWG NUMBER: 9 B H8R-DWG-S2G-GEN-1039																			
Used on / Next higher assembly: _____		Alternate DMS number: _____		Drawn: T.MORTON		Designed: R.STEPHENS		Conditions of Use: This document may only be used by GHD's client (and any other person who GHD had agreed can use this document) for the purpose for which it was prepared and must not be used by any other person or for any other purpose.																			
		<table border="1" style="width: 100%; border-collapse: collapse;"> <tr> <th>Rev</th> <th>Date</th> <th>Revision Description</th> <th>Drawn</th> <th>Checked</th> <th>Approv.</th> </tr> <tr> <td>B</td> <td>16.02.10</td> <td>ISSUED FOR COMMENT</td> <td>G.M.</td> <td></td> <td></td> </tr> <tr> <td>A</td> <td>10.02.10</td> <td>ISSUED FOR COMMENT</td> <td>T.M.</td> <td></td> <td></td> </tr> </table>		Rev	Date	Revision Description	Drawn	Checked	Approv.	B	16.02.10	ISSUED FOR COMMENT	G.M.			A	10.02.10	ISSUED FOR COMMENT	T.M.			Approved: Date: _____ This drawing must not be used for construction unless signed as Approved		MAITLAND TO MINIMBAH - THIRD TRACK DETAIL PLAN CH206km940 TO CH207km280		Sheet No. 39 OF 89 Scale (A1): 1:500	
Rev	Date	Revision Description	Drawn	Checked	Approv.																						
B	16.02.10	ISSUED FOR COMMENT	G.M.																								
A	10.02.10	ISSUED FOR COMMENT	T.M.																								

PLOT DATE: 18/02/2010 10:58AM
 GHD FILEPATH: \\HTRS\01\GHD\Drawings\General Arrangements\H8R-DWG-S2G-GEN-1001-1089_A1_Mapbook_20100211_A.mxd

FROM SYDNEY
 JOINS DRAWING No. H8R-DWG-S2G-GEN-1038

TO SINGLETON
 JOINS DRAWING No. H8R-DWG-S2G-GEN-1040

1 2 3 4 5 6 7 8

A

B

C

D

E

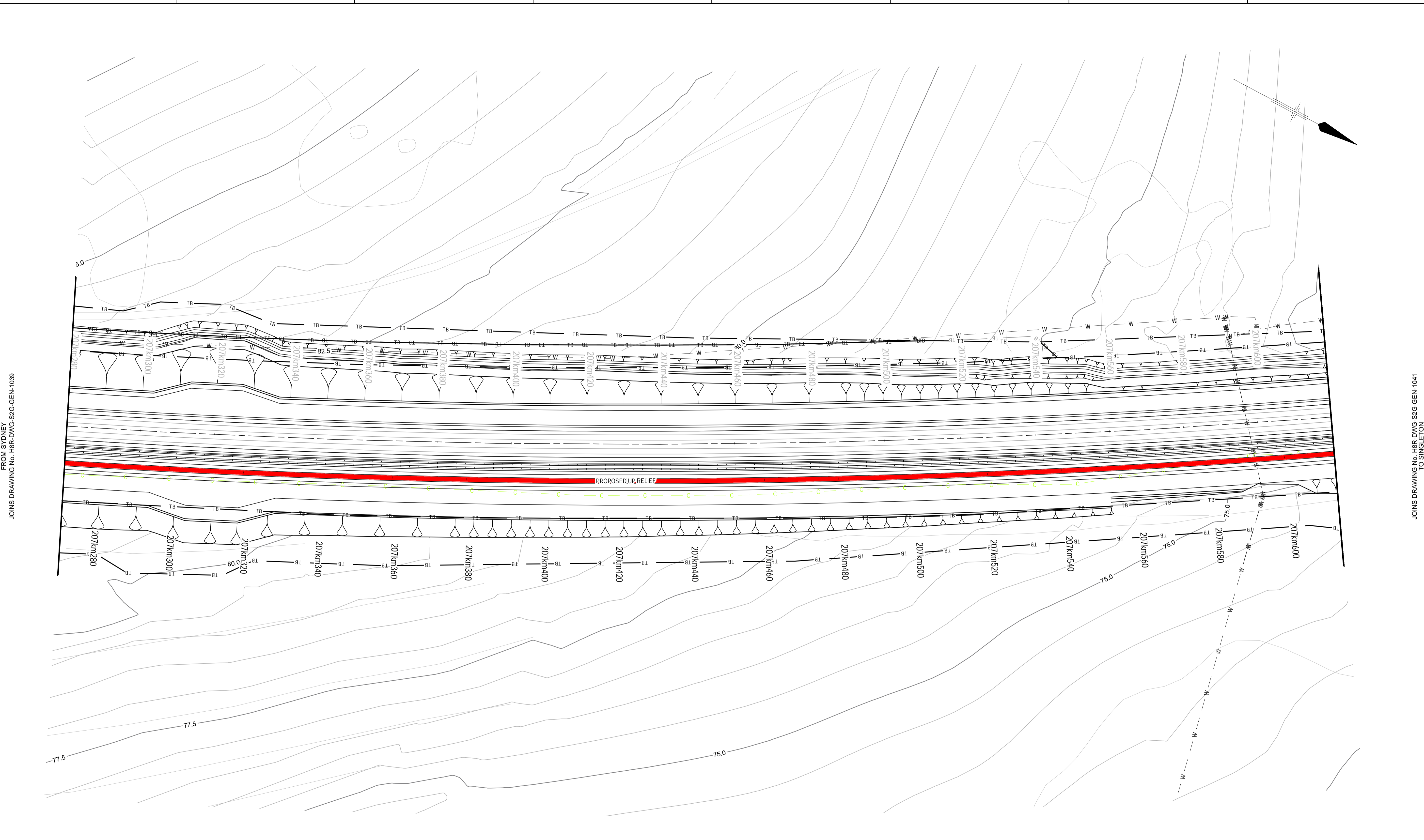
A

B

C

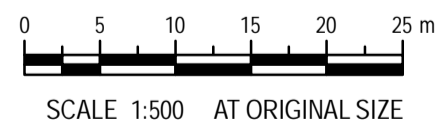
D

E



FROM SYDNEY
JOINS DRAWING No. H8R-DWG-S2G-GEN-1039

JOINS DRAWING No. H8R-DWG-S2G-GEN-1041
TO SINGLETON



UNCONTROLLED DOCUMENT

PRELIMINARY

© 2009 Australian Rail Track Corporation Ltd.
Drawing standard in accordance with Hunter 8 Alliance standards

ARTC APPROVAL									
Approved By									
Signed:									
Approval Date									
Rev	Date	Revision Description	Drawn	Checked	Approved				
B	16.02.10	ISSUED FOR COMMENT				G.M.			
A	10.02.10	ISSUED FOR COMMENT				T.M.			

Designing Company: GHD GHD Job Number: 22-14471	Address: Level 3 GHD Tower, 24 Honeysuckle Drive Newcastle NSW 2300 Australia T 61 2 4979 9999 F 61 2 4979 9988 E ntmial@ghd.com W www.ghd.com
Drawn T.MORTON	Designed R.STEPHENS
Drafting Check	Design Check
Approved	Date



H8R DWG NUMBER 9 B
H8R-DWG-S2G-GEN-1040
MAITLAND TO MINIMBAH - THIRD TRACK
DETAIL PLAN
CH207km280 TO CH207km620
Sheet No.
40 OF 89
Scale (A1):
1:500

PLOT DATE: 18/02/2010 10:58AM
GHD FILEPATH: \\HTRS\01\GHD_D\2214471\GIS\Map\General Arrangements\H8R-DWG-S2G-GEN-1001-1089_A1_Mapbook_20100211_A.mxd

1 2 3 4 5 6 7 8

1 2 3 4 5 6 7 8

A

B

C

D

E

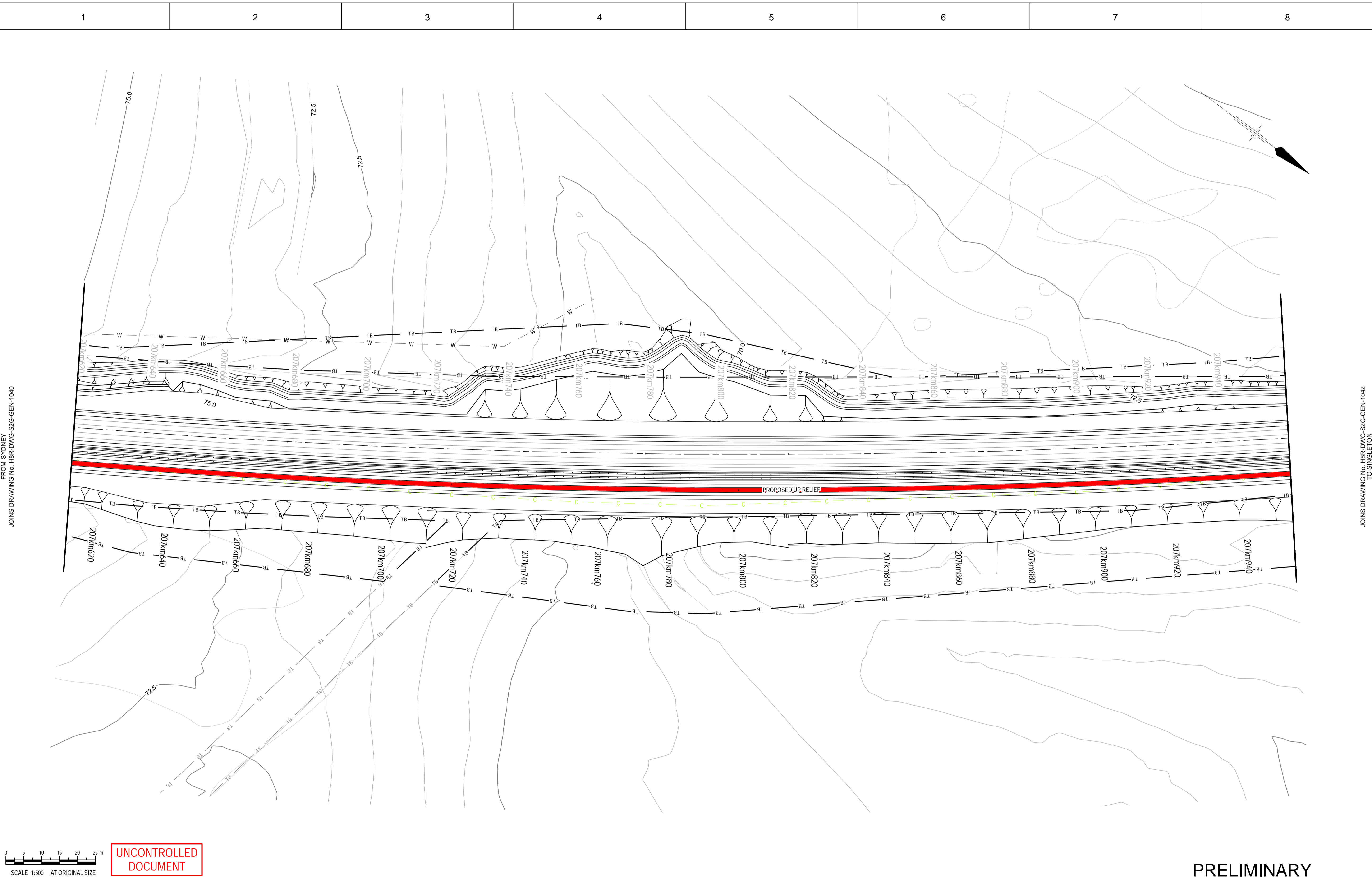
A

B

C

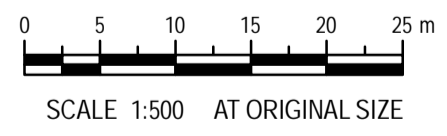
D

E



FROM SYDNEY
JOINS DRAWING No. H8R-DWG-S2G-GEN-1040

TO SINGLETON
JOINS DRAWING No. H8R-DWG-S2G-GEN-1042



UNCONTROLLED DOCUMENT

PRELIMINARY

© 2009 Australian Rail Track Corporation Ltd.
Drawing standard in accordance with Hunter 8 Alliance standards

ARTC APPROVAL					
Approved By					
Signed:					
Rev	Date	Revision Description	Drawn	Checked	Approved
B	16.02.10	ISSUED FOR COMMENT	G.M.		
A	10.02.10	ISSUED FOR COMMENT	T.M.		

Designing Company: GHD GHD Job Number: 22-14471	Address: Level 3 GHD Tower, 24 Honeysuckle Drive Newcastle NSW 2300 Australia T 61 2 4979 9999 F 61 2 4979 9988 E ntmial@ghd.com W www.ghd.com
Drawn T.MORTON	Designed R.STEPHENS
Conditions of Use: This document may only be used by GHD's client (and any other person who GHD had agreed can use this document) for the purpose for which it was prepared and must not be used by any other person or for any other purpose.	
Approved	This Drawing must not be used for Construction unless signed as Approved
Date	

H8R DWG NUMBER **9B**

H8R-DWG-S2G-GEN-1041

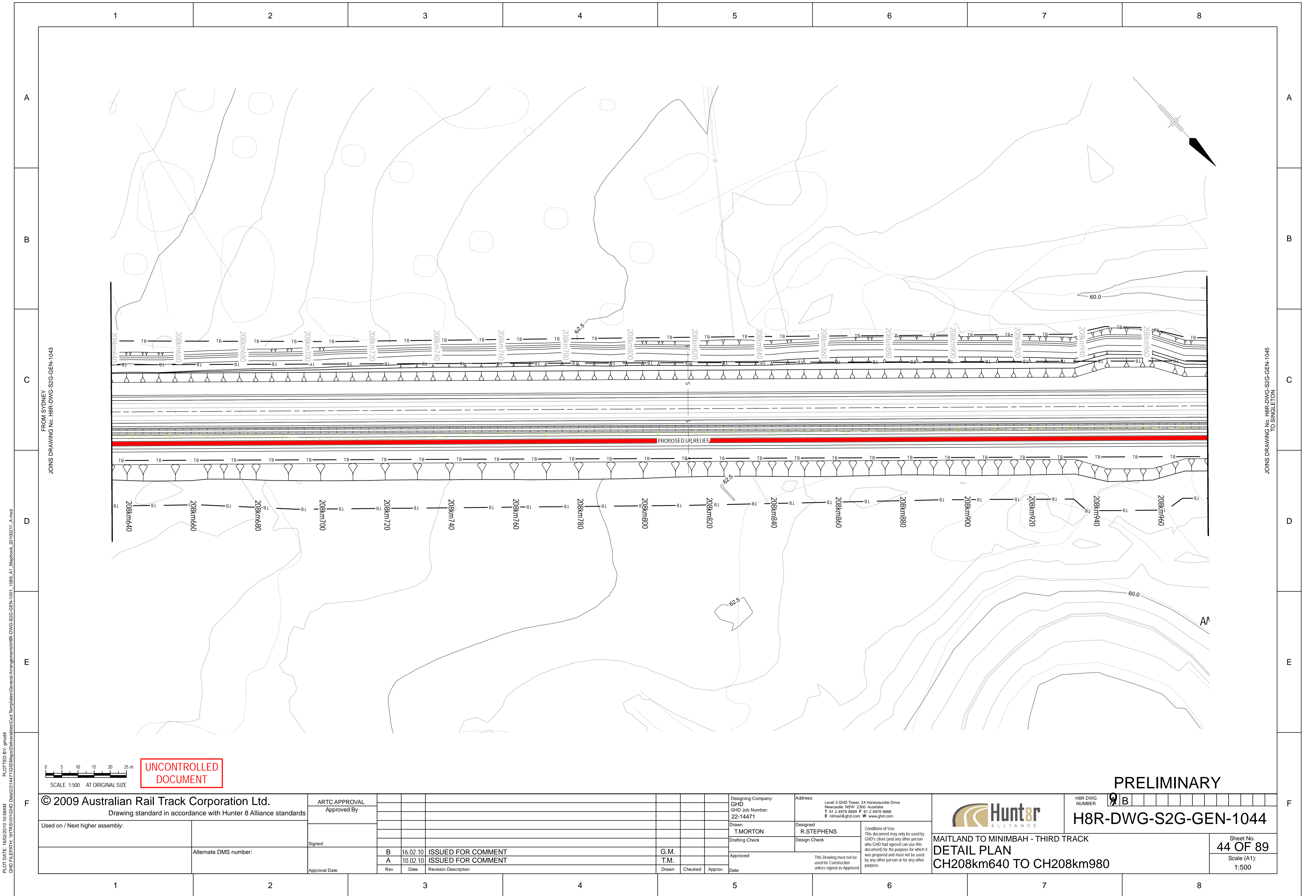
MAITLAND TO MINIMBAH - THIRD TRACK
DETAIL PLAN
CH207km620 TO CH207km960

Sheet No.
41 OF 89

Scale (A1):
1:500

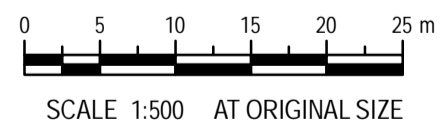
PLOT DATE: 18/02/2010 10:58AM
GHD FILEPATH: \\HTRS\01\GHD\Draw\22\14471\GIS\Map\General Arrangements\H8R-DWG-S2G-GEN-1041-1089_A1_Mapbook_20100211_A.mxd

1 2 3 4 5 6 7 8



FROM SYDNEY
JOINS DRAWING No. H8R-DWG-S2G-GEN-1043

TO SINGLETON
JOINS DRAWING No. H8R-DWG-S2G-GEN-1045



UNCONTROLLED DOCUMENT

PRELIMINARY

© 2009 Australian Rail Track Corporation Ltd.
Drawing standard in accordance with Hunter 8 Alliance standards

Used on / Next higher assembly:

Alternate DMS number:

ARTC APPROVAL					
Approved By					
Signed:					
Rev	Date	Revision Description	Drawn	Checked	Approved
B	16.02.10	ISSUED FOR COMMENT			G.M.
A	10.02.10	ISSUED FOR COMMENT			T.M.

Designing Company:
GHD
GHD Job Number:
22-14471

Address:
Level 3 GHD Tower, 24 Honeysuckle Drive
Newcastle NSW 2300 Australia
T 61 2 4979 9999 F 61 2 4979 9988
E ntm@mail@ghd.com W www.ghd.com

Drawn
T.MORTON

Designed
R.STEPHENS

Drafting Check
Design Check

Approved

This Drawing must not be used for Construction unless signed as Approved

Hunter 8 ALLIANCE

H8R DWG NUMBER 9 B

H8R-DWG-S2G-GEN-1044

MAITLAND TO MINIMBAH - THIRD TRACK
DETAIL PLAN
CH208km640 TO CH208km980

Sheet No.
44 OF 89
Scale (A1):
1:500

PLOT DATE: 18/02/2010 10:58AM
GHD FILEPATH: \\HTRS\01\GHD_Data\2214471\GIS\Map\General Arrangements\H8R-DWG-S2G-GEN-1043_1089_A1_Mapbook_20100211_A.mxd

1 2 3 4 5 6 7 8

A

B

C

D

E

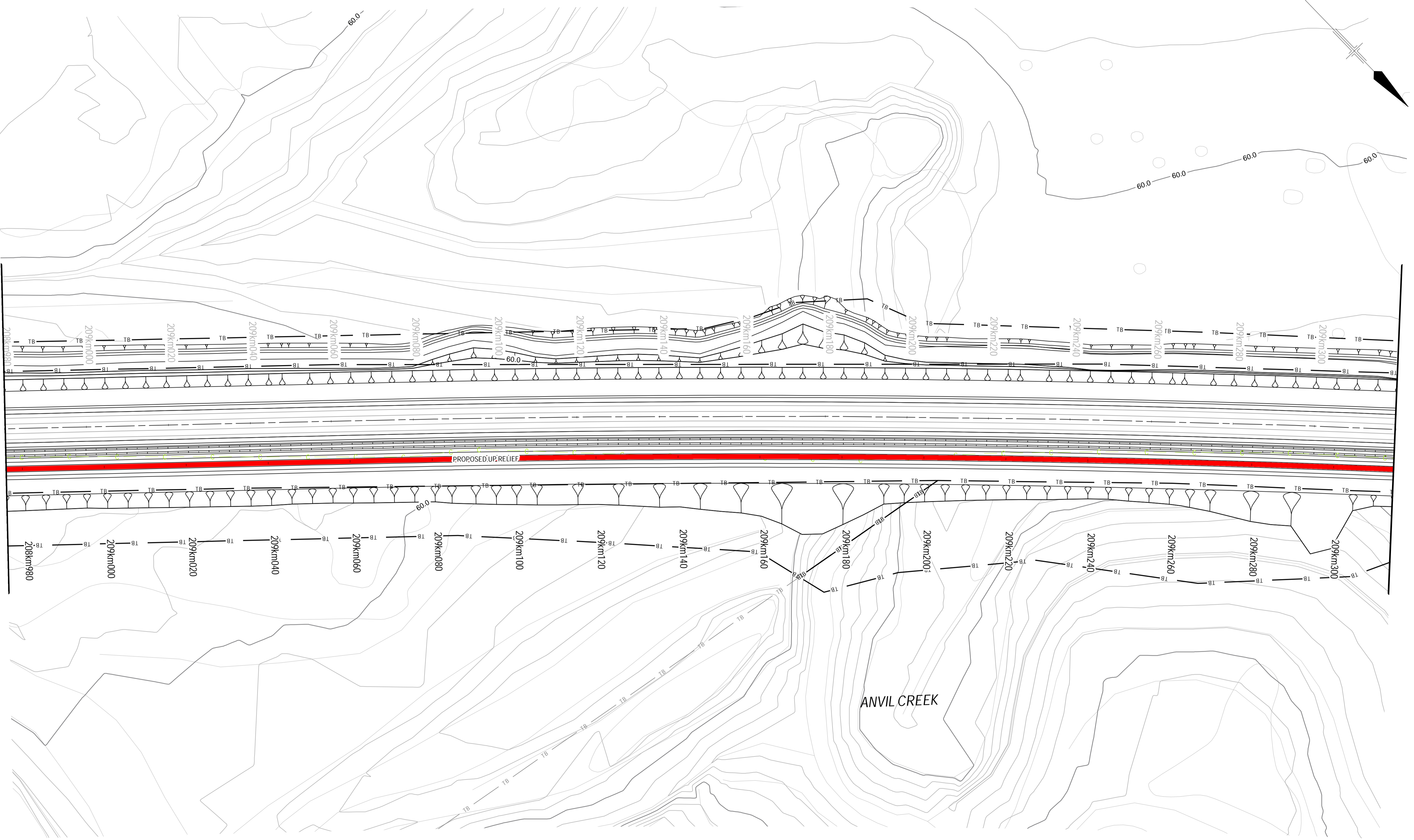
A

B

C

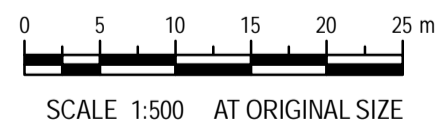
D

E



FROM SYDNEY
JOINS DRAWING No. H8R-DWG-S2G-GEN-1044

JOINS DRAWING No. H8R-DWG-S2G-GEN-1046
TO SINGLETON



UNCONTROLLED DOCUMENT

PRELIMINARY

© 2009 Australian Rail Track Corporation Ltd.
Drawing standard in accordance with Hunter 8 Alliance standards

ARTC APPROVAL											
Approved By											
Signed:											
Approval Date		B 16.02.10		ISSUED FOR COMMENT		G.M.					
		A 10.02.10		ISSUED FOR COMMENT		T.M.					
		Rev		Date		Revision Description		Drawn		Checked	

Designing Company: GHD GHD Job Number: 22-14471		Address: Level 3 GHD Tower, 24 Honeysuckle Drive Newcastle NSW 2300 Australia T 61 2 4979 9999 F 61 2 4979 9988 E ntm@mail@ghd.com W www.ghd.com	
Drawn T.MORTON	Designed R.STEPHENS	Conditions of Use: This document may only be used by GHD's client (and any other person who GHD had agreed can use this document) for the purpose for which it was prepared and must not be used by any other person or for any other purpose.	
Approved		This Drawing must not be used for Construction unless signed as Approved	
Date		Date	

		H8R DWG NUMBER 9B H8R-DWG-S2G-GEN-1045	
MAITLAND TO MINIMBAH - THIRD TRACK DETAIL PLAN CH208km980 TO CH209km320			Sheet No. 45 OF 89 Scale (A1): 1:500

PLOT DATE: 18/02/2010 10:58AM
GHD FILEPATH: \\NTSMS\01\GHD_Drawing\22\14471\GIS\Map\General Arrangements\H8R-DWG-S2G-GEN-1045_A1_Mapbook_20100211_A.mxd

1 2 3 4 5 6 7 8