



**Appendix S**  
**Design Drawings**



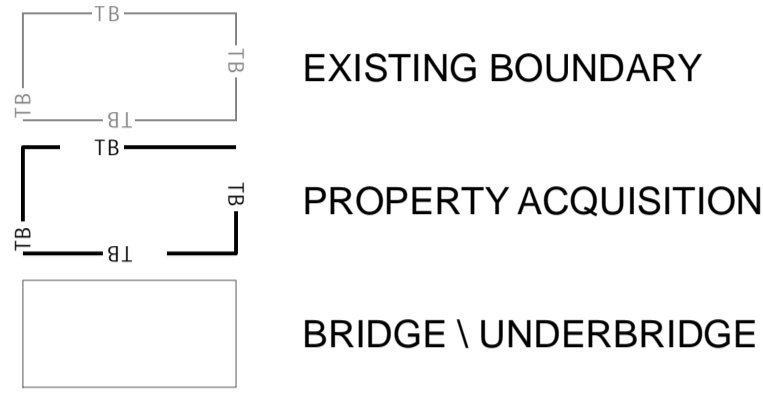


A

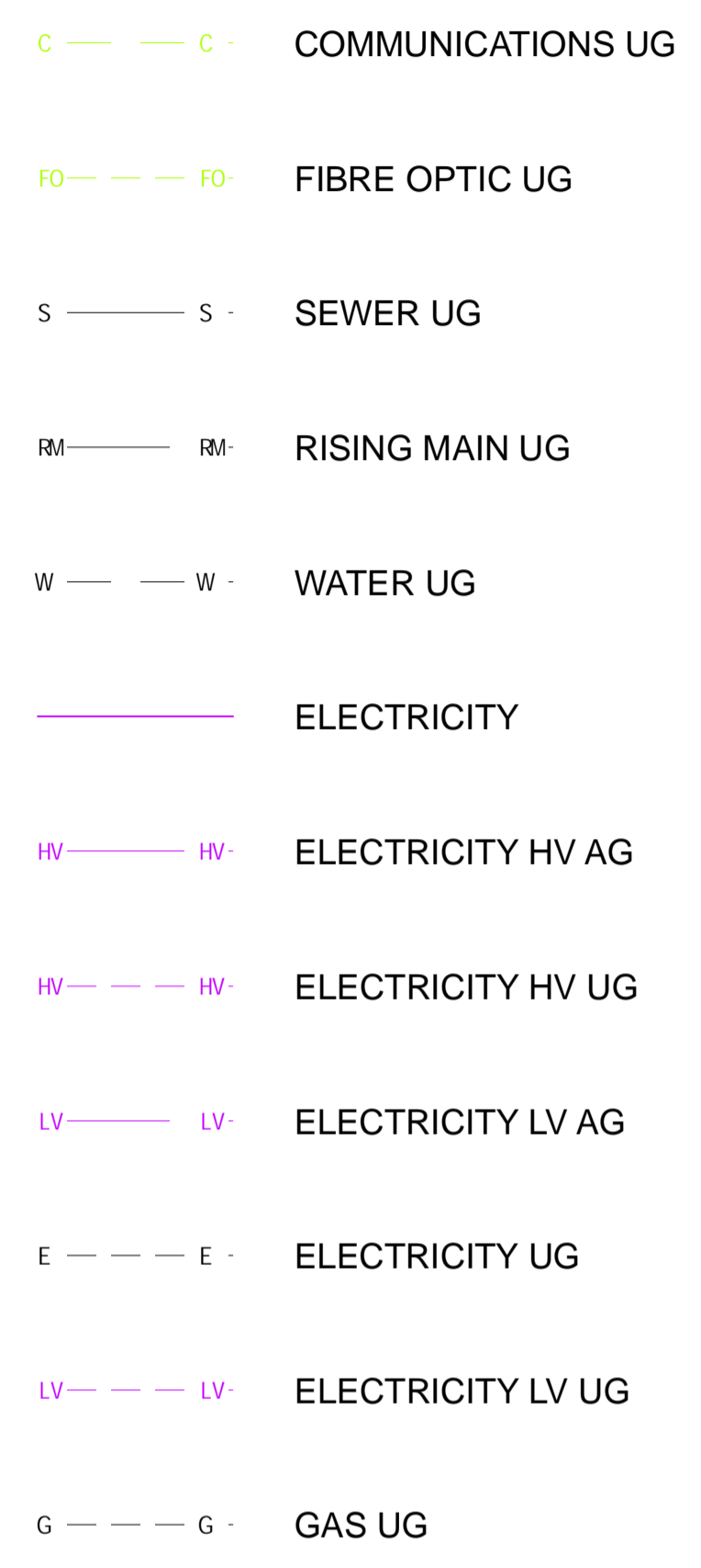
A

**LEGEND**

**DRAWING SCHEDULE**



**EXISTING SERVICES**



| DRAWING No.          | DESCRIPTION                                  |
|----------------------|--|
| H8R-DWG-S2G-GEN-1000 | DETAIL PLAN RAIL LEGEND AND DRAWING SCHEDULE |
| H8R-DWG-S2G-GEN-1001 | DETAIL PLAN CH194km020 TO CH194km360         |
| H8R-DWG-S2G-GEN-1002 | DETAIL PLAN CH194km360 TO CH194km700         |
| H8R-DWG-S2G-GEN-1003 | DETAIL PLAN CH194km700 TO CH195km040         |
| H8R-DWG-S2G-GEN-1004 | DETAIL PLAN CH195km040 TO CH195km380         |
| H8R-DWG-S2G-GEN-1005 | DETAIL PLAN CH195km380 TO CH195km720         |
| H8R-DWG-S2G-GEN-1006 | DETAIL PLAN CH195km720 TO CH196km060         |
| H8R-DWG-S2G-GEN-1007 | DETAIL PLAN CH196km060 TO CH196km400         |
| H8R-DWG-S2G-GEN-1008 | DETAIL PLAN CH196km400 TO CH196km740         |
| H8R-DWG-S2G-GEN-1009 | DETAIL PLAN CH196km740 TO CH197km080         |
| H8R-DWG-S2G-GEN-1010 | DETAIL PLAN CH197km080 TO CH197km420         |
| H8R-DWG-S2G-GEN-1011 | DETAIL PLAN CH197km420 TO CH197km760         |
| H8R-DWG-S2G-GEN-1012 | DETAIL PLAN CH197km760 TO CH198km100         |
| H8R-DWG-S2G-GEN-1013 | DETAIL PLAN CH198km100 TO CH198km440         |
| H8R-DWG-S2G-GEN-1014 | DETAIL PLAN CH198km440 TO CH198km780         |
| H8R-DWG-S2G-GEN-1015 | DETAIL PLAN CH198km780 TO CH199km120         |
| H8R-DWG-S2G-GEN-1016 | DETAIL PLAN CH199km120 TO CH199km460         |
| H8R-DWG-S2G-GEN-1017 | DETAIL PLAN CH199km460 TO CH199km800         |
| H8R-DWG-S2G-GEN-1018 | DETAIL PLAN CH199km800 TO CH200km140         |
| H8R-DWG-S2G-GEN-1019 | DETAIL PLAN CH200km140 TO CH200km480         |
| H8R-DWG-S2G-GEN-1020 | DETAIL PLAN CH200km480 TO CH200km820         |
| H8R-DWG-S2G-GEN-1021 | DETAIL PLAN CH200km820 TO CH201km160         |
| H8R-DWG-S2G-GEN-1022 | DETAIL PLAN CH201km160 TO CH201km500         |
| H8R-DWG-S2G-GEN-1023 | DETAIL PLAN CH201km500 TO CH201km840         |
| H8R-DWG-S2G-GEN-1024 | DETAIL PLAN CH201km840 TO CH202km180         |
| H8R-DWG-S2G-GEN-1025 | DETAIL PLAN CH202km180 TO CH202km520         |
| H8R-DWG-S2G-GEN-1026 | DETAIL PLAN CH202km520 TO CH202km860         |
| H8R-DWG-S2G-GEN-1027 | DETAIL PLAN CH202km860 TO CH203km200         |
| H8R-DWG-S2G-GEN-1028 | DETAIL PLAN CH203km200 TO CH203km540         |
| H8R-DWG-S2G-GEN-1029 | DETAIL PLAN CH203km540 TO CH203km880         |
| H8R-DWG-S2G-GEN-1030 | DETAIL PLAN CH203km880 TO CH204km220         |
| H8R-DWG-S2G-GEN-1031 | DETAIL PLAN CH204km220 TO CH204km560         |
| H8R-DWG-S2G-GEN-1032 | DETAIL PLAN CH204km560 TO CH204km900         |
| H8R-DWG-S2G-GEN-1033 | DETAIL PLAN CH204km900 TO CH205km240         |
| H8R-DWG-S2G-GEN-1034 | DETAIL PLAN CH205km240 TO CH205km580         |
| H8R-DWG-S2G-GEN-1035 | DETAIL PLAN CH205km580 TO CH205km920         |
| H8R-DWG-S2G-GEN-1036 | DETAIL PLAN CH205km920 TO CH206km260         |
| H8R-DWG-S2G-GEN-1037 | DETAIL PLAN CH206km260 TO CH206km600         |
| H8R-DWG-S2G-GEN-1038 | DETAIL PLAN CH206km600 TO CH206km940         |
| H8R-DWG-S2G-GEN-1039 | DETAIL PLAN CH206km940 TO CH207km280         |
| H8R-DWG-S2G-GEN-1040 | DETAIL PLAN CH207km280 TO CH207km620         |
| H8R-DWG-S2G-GEN-1041 | DETAIL PLAN CH207km620 TO CH207km960         |
| H8R-DWG-S2G-GEN-1042 | DETAIL PLAN CH207km960 TO CH208km300         |
| H8R-DWG-S2G-GEN-1043 | DETAIL PLAN CH208km300 TO CH208km640         |
| H8R-DWG-S2G-GEN-1044 | DETAIL PLAN CH208km640 TO CH208km980         |

| DRAWING No.          | DESCRIPTION                          |
|----------------------|--------------------------------------|
| H8R-DWG-S2G-GEN-1045 | DETAIL PLAN CH208km980 TO CH209km320 |
| H8R-DWG-S2G-GEN-1046 | DETAIL PLAN CH209km320 TO CH209km660 |
| H8R-DWG-S2G-GEN-1047 | DETAIL PLAN CH209km660 TO CH210km000 |
| H8R-DWG-S2G-GEN-1048 | DETAIL PLAN CH210km000 TO CH210km340 |
| H8R-DWG-S2G-GEN-1049 | DETAIL PLAN CH210km340 TO CH210km680 |
| H8R-DWG-S2G-GEN-1050 | DETAIL PLAN CH210km680 TO CH211km020 |
| H8R-DWG-S2G-GEN-1051 | DETAIL PLAN CH211km020 TO CH211km360 |
| H8R-DWG-S2G-GEN-1052 | DETAIL PLAN CH211km360 TO CH211km700 |
| H8R-DWG-S2G-GEN-1053 | DETAIL PLAN CH211km700 TO CH212km040 |
| H8R-DWG-S2G-GEN-1054 | DETAIL PLAN CH212km040 TO CH212km380 |
| H8R-DWG-S2G-GEN-1055 | DETAIL PLAN CH212km380 TO CH212km720 |
| H8R-DWG-S2G-GEN-1056 | DETAIL PLAN CH212km720 TO CH213km060 |
| H8R-DWG-S2G-GEN-1057 | DETAIL PLAN CH213km060 TO CH213km400 |
| H8R-DWG-S2G-GEN-1058 | DETAIL PLAN CH213km400 TO CH213km740 |
| H8R-DWG-S2G-GEN-1059 | DETAIL PLAN CH213km740 TO CH214km080 |
| H8R-DWG-S2G-GEN-1060 | DETAIL PLAN CH214km080 TO CH214km420 |
| H8R-DWG-S2G-GEN-1061 | DETAIL PLAN CH214km420 TO CH214km760 |
| H8R-DWG-S2G-GEN-1062 | DETAIL PLAN CH214km760 TO CH215km100 |
| H8R-DWG-S2G-GEN-1063 | DETAIL PLAN CH215km100 TO CH215km440 |
| H8R-DWG-S2G-GEN-1064 | DETAIL PLAN CH215km440 TO CH215km780 |
| H8R-DWG-S2G-GEN-1065 | DETAIL PLAN CH215km780 TO CH216km120 |
| H8R-DWG-S2G-GEN-1066 | DETAIL PLAN CH216km120 TO CH216km460 |
| H8R-DWG-S2G-GEN-1067 | DETAIL PLAN CH216km460 TO CH216km800 |
| H8R-DWG-S2G-GEN-1068 | DETAIL PLAN CH216km800 TO CH217km140 |
| H8R-DWG-S2G-GEN-1069 | DETAIL PLAN CH217km140 TO CH217km480 |
| H8R-DWG-S2G-GEN-1070 | DETAIL PLAN CH217km480 TO CH217km820 |
| H8R-DWG-S2G-GEN-1071 | DETAIL PLAN CH217km820 TO CH218km160 |
| H8R-DWG-S2G-GEN-1072 | DETAIL PLAN CH218km160 TO CH218km500 |
| H8R-DWG-S2G-GEN-1073 | DETAIL PLAN CH218km500 TO CH218km840 |
| H8R-DWG-S2G-GEN-1074 | DETAIL PLAN CH218km840 TO CH219km180 |
| H8R-DWG-S2G-GEN-1075 | DETAIL PLAN CH219km180 TO CH219km520 |
| H8R-DWG-S2G-GEN-1076 | DETAIL PLAN CH219km520 TO CH219km860 |
| H8R-DWG-S2G-GEN-1077 | DETAIL PLAN CH219km860 TO CH220km200 |
| H8R-DWG-S2G-GEN-1078 | DETAIL PLAN CH220km200 TO CH220km540 |
| H8R-DWG-S2G-GEN-1079 | DETAIL PLAN CH220km540 TO CH220km880 |
| H8R-DWG-S2G-GEN-1080 | DETAIL PLAN CH220km880 TO CH221km220 |
| H8R-DWG-S2G-GEN-1081 | DETAIL PLAN CH221km220 TO CH221km560 |
| H8R-DWG-S2G-GEN-1082 | DETAIL PLAN CH221km560 TO CH221km900 |
| H8R-DWG-S2G-GEN-1083 | DETAIL PLAN CH221km900 TO CH222km240 |
| H8R-DWG-S2G-GEN-1084 | DETAIL PLAN CH222km240 TO CH222km580 |
| H8R-DWG-S2G-GEN-1085 | DETAIL PLAN CH222km580 TO CH222km920 |
| H8R-DWG-S2G-GEN-1086 | DETAIL PLAN CH222km920 TO CH223km260 |
| H8R-DWG-S2G-GEN-1087 | DETAIL PLAN CH223km260 TO CH223km600 |
| H8R-DWG-S2G-GEN-1088 | DETAIL PLAN CH223km600 TO CH223km940 |
| H8R-DWG-S2G-GEN-1089 | DETAIL PLAN CH223km940 TO CH224km280 |

B

B

C

C

D

D

E

E

**UNCONTROLLED DOCUMENT**

**PRELIMINARY**

© 2009 Australian Rail Track Corporation Ltd.  
Drawing standard in accordance with Hunter 8 Alliance standards

|               |             |  |
|---------------|-------------|--|
| ARTC APPROVAL | Approved By |  |
| Signed:       |             |  |
| Approval Date |             |  |

| Rev | Date     | Revision Description |
|-----|----------|----------------------|
| B   | 16.02.10 | ISSUED FOR COMMENT   |
| A   | 10.02.10 | ISSUED FOR COMMENT   |

|      |       |         |          |
|------|-------|---------|----------|
| T.M. | Drawn | Checked | Approved |
|------|-------|---------|----------|

Designing Company: GHD  
GHD Job Number: 22-14471

Address: Level 3 GHD Tower, 24 Honeysuckle Drive  
Newcastle NSW 2300 Australia  
T: 61 2 4979 9999 F: 61 2 4979 9988  
E: ntm@mail@ghd.com W: www.ghd.com

Drawn: T.MORTON  
Designed: R.STEPHENS  
Drafting Check: Design Check

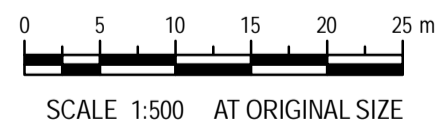
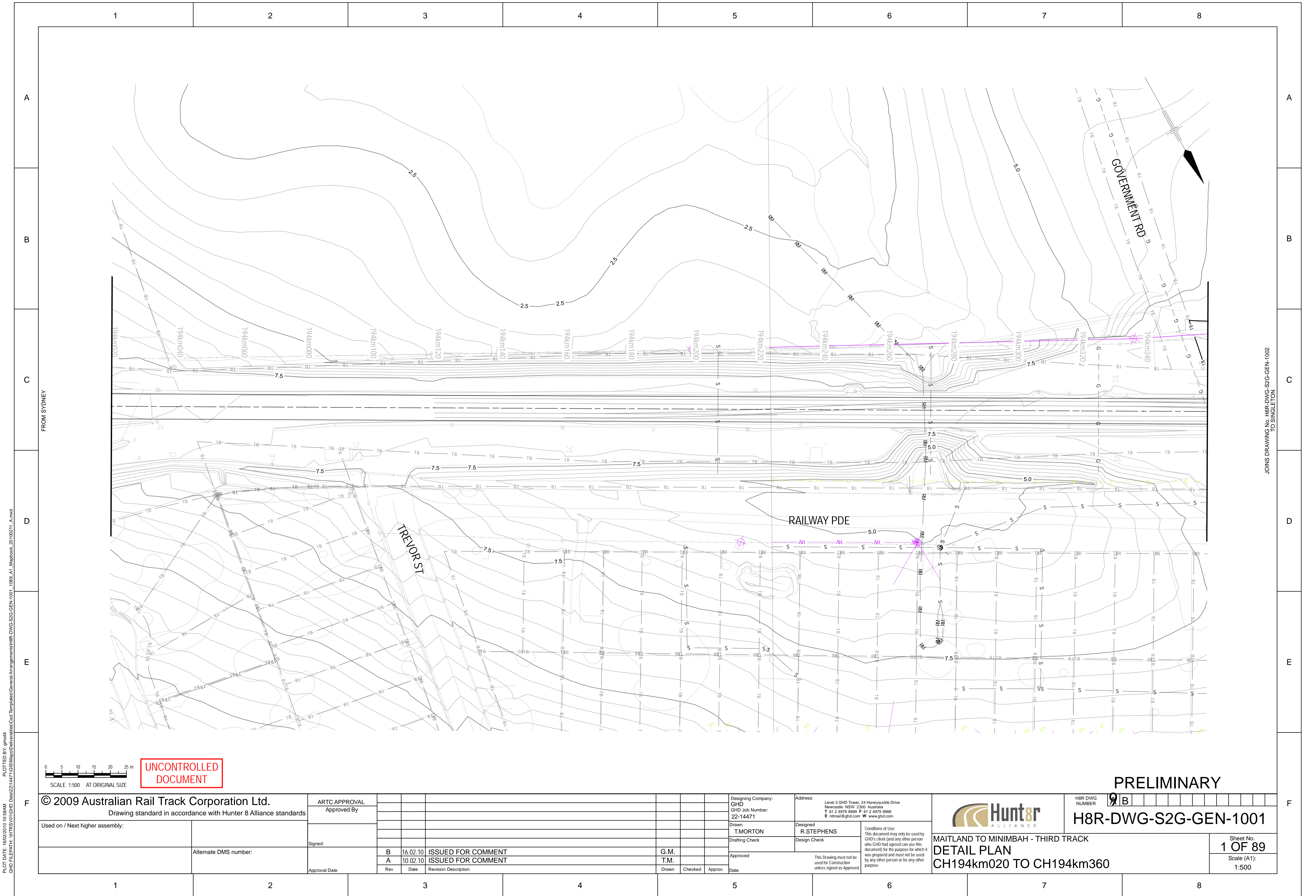
Approved: This Drawing must not be used for Construction unless signed as Approved



H8R DWG NUMBER: 9 B  
**H8R-DWG-S2G-GEN-1000**

MAITLAND TO MINIMBAH - THIRD TRACK  
**DETAIL PLAN RAIL LEGEND AND DRAWING SCHEDULE**

Sheet No. **1 OF 1**  
Scale (A1): NOT TO SCALE



**UNCONTROLLED DOCUMENT**

**PRELIMINARY**

© 2009 Australian Rail Track Corporation Ltd.  
Drawing standard in accordance with Hunter 8 Alliance standards

ARTC APPROVAL  
Approved By

Used on / Next higher assembly:

Signed:

Alternate DMS number:

Approval Date

|     |          |                      |
|-----|----------|----------------------|
| Rev | Date     | Revision Description |
| B   | 16.02.10 | ISSUED FOR COMMENT   |
| A   | 10.02.10 | ISSUED FOR COMMENT   |

|          |         |          |
|----------|---------|----------|
| Drawn    | Checked | Approved |
| T.MORTON | T.M.    | G.M.     |

Designing Company:  
GHD  
GHD Job Number:  
22-14471

Address:  
Level 3 GHD Tower, 24 Honeysuckle Drive  
Newcastle NSW 2300 Australia  
T 61 2 4979 9999 F 61 2 4979 9988  
E intmail@ghd.com W www.ghd.com

Drawn  
T.MORTON

Designed  
R.STEPHENS

Design Check  
STEPHENS

Approved

Date

Conditions of Use:  
This document may only be used by GHD's client (and any other person who GHD had agreed can use this document) for the purpose for which it was prepared and must not be used by any other person or for any other purpose.

This Drawing must not be used for Construction unless signed as Approved



H8R DWG NUMBER  
9 B

**H8R-DWG-S2G-GEN-1001**

MAITLAND TO MINIMBAH - THIRD TRACK  
**DETAIL PLAN**  
CH194km020 TO CH194km360

Sheet No.  
**1 OF 89**  
Scale (A1):  
1:500

PLOT DATE: 18/02/2010 10:58AM  
GHD FILEPATH: \\HTRS\01\GHD\_Data\2214471\GIS\Map\Drawings\Cad Templates\General Arrangements\H8R-DWG-S2G-GEN-1001\_1089\_A1\_Mapbook\_20100211\_A.mxd

JOINS DRAWING No. H8R-DWG-S2G-GEN-1002 TO SINGLETON

1 2 3 4 5 6 7 8

A

B

C

D

E

F

A

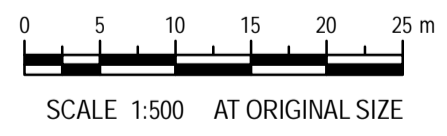
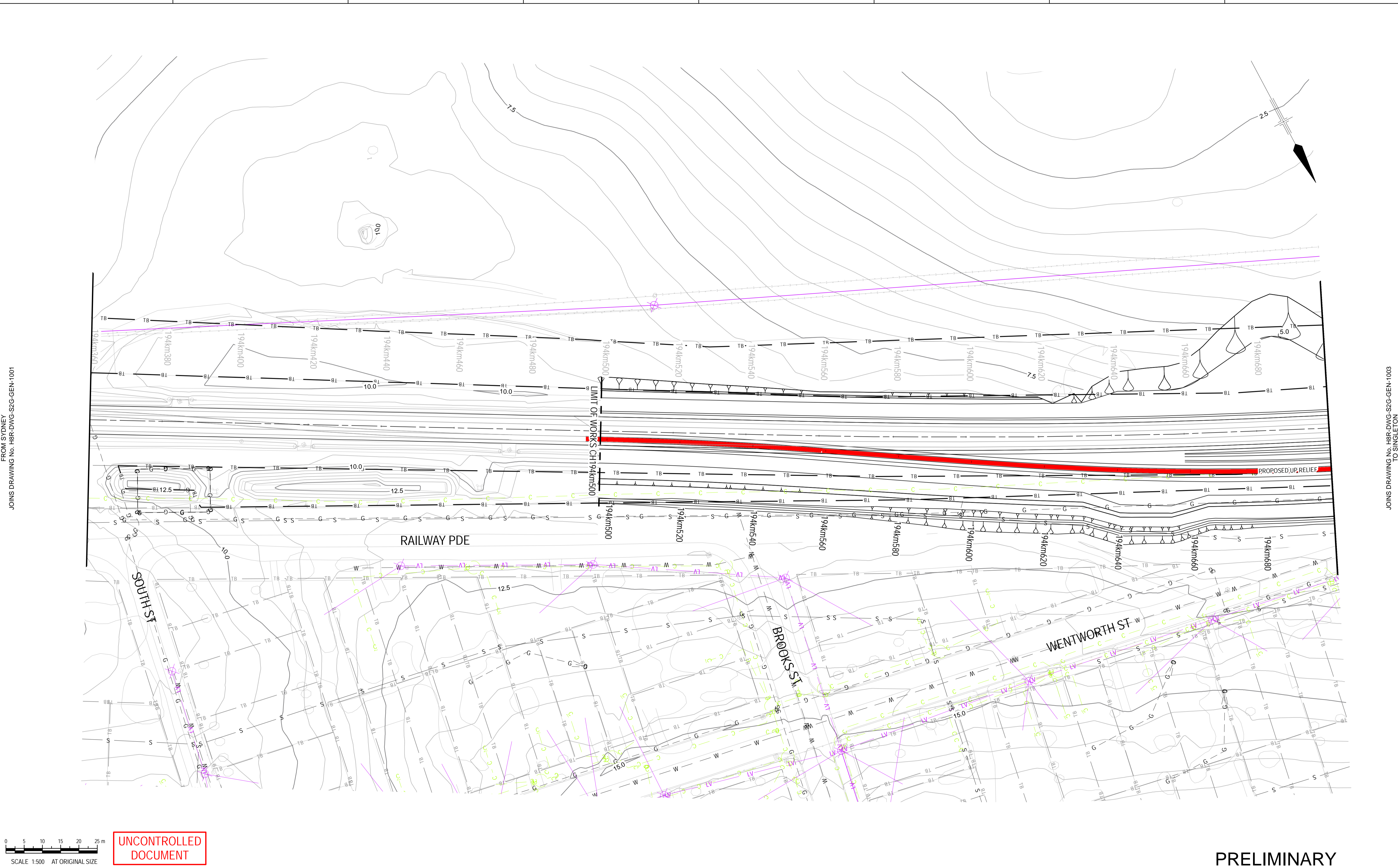
B

C

D

E

F



**UNCONTROLLED DOCUMENT**

**PRELIMINARY**

© 2009 Australian Rail Track Corporation Ltd.

ARTC APPROVAL  
Approved By

Designing Company:  
GHD  
GHD Job Number:  
22-14471

Address:  
Level 3 GHD Tower, 24 Honeysuckle Drive  
Newcastle NSW 2300 Australia  
T 61 2 4979 9999 F 61 2 4979 9988  
E ntm@mail@ghd.com W www.ghd.com

H8R DWG NUMBER  
**9 B**  
**H8R-DWG-S2G-GEN-1002**

Used on / Next higher assembly:

Signed:

Drawn  
**T.MORTON**  
Designed  
**R.STEPHENS**

Drafting Check  
Design Check

MAITLAND TO MINIMBAH - THIRD TRACK  
**DETAIL PLAN**  
**CH194km360 TO CH194km700**

Alternate DMS number:

|     |          |                      |       |         |          |
|-----|----------|----------------------|-------|---------|----------|
| Rev | Date     | Revision Description | Drawn | Checked | Approved |
| B   | 16.02.10 | ISSUED FOR COMMENT   | G.M.  |         |          |
| A   | 10.02.10 | ISSUED FOR COMMENT   | T.M.  |         |          |

Approved

This Drawing must not be used for Construction unless signed as Approved

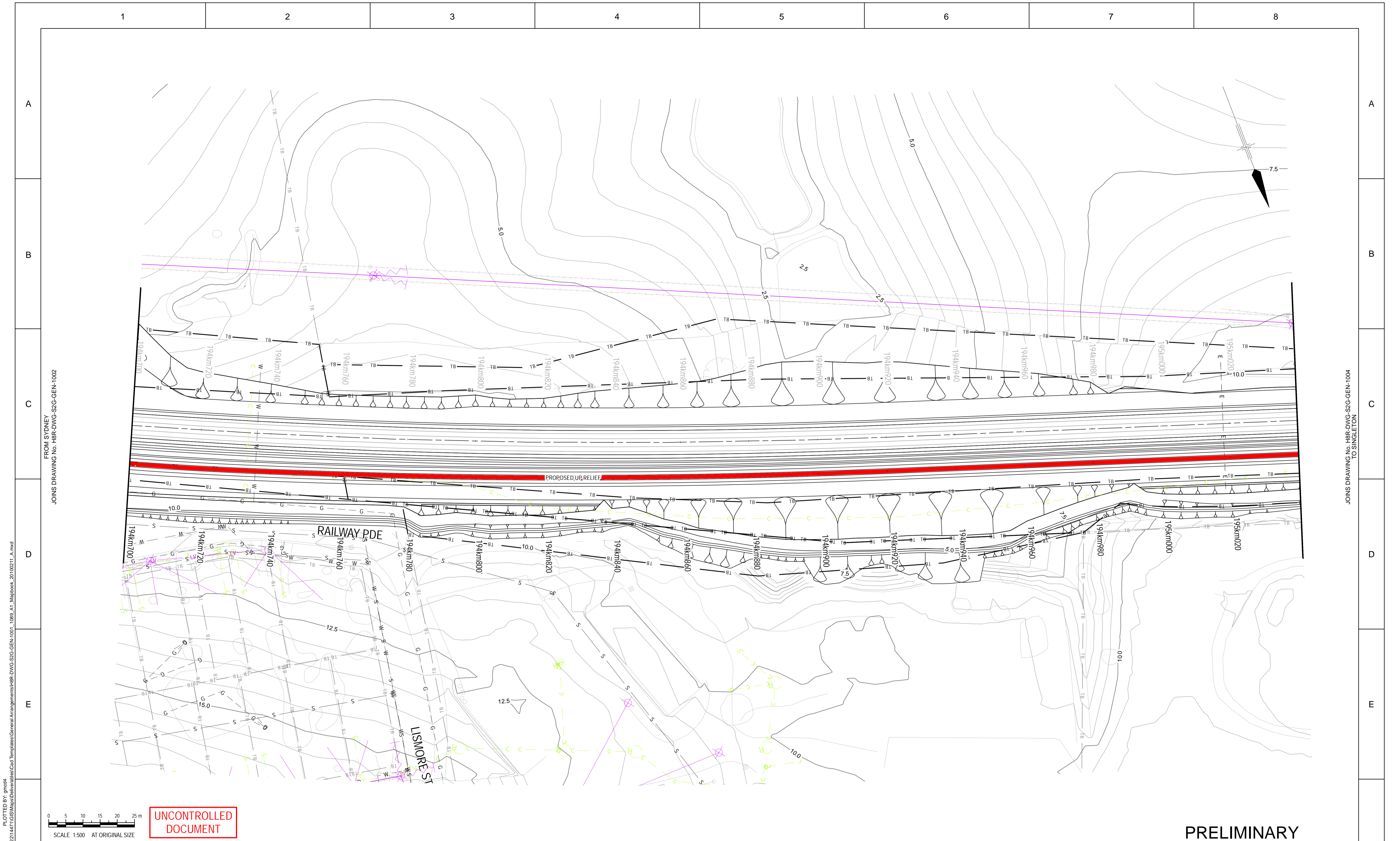
Conditions of Use:  
This document may only be used by GHD's client (and any other person who GHD had agreed can use this document) for the purpose for which it was prepared and must not be used by any other person or for any other purpose.

Sheet No.  
**2 OF 89**

Scale (A1):  
1:500

1 2 3 4 5 6 7 8

PLOT DATE: 18/02/2010 10:58AM  
GHD FILEPATH: \\HTRS\01\GHD\_DWG\2214471\GIS\Map\Barracks\Cad Templates\General Arrangements\H8R-DWG-S2G-GEN-1001-1089\_A1\_Mapbook\_20100211\_A.mxd



FROM SYDNEY  
JOINS DRAWING No. H8R-DWG-S2G-GEN-1002

© 2009 Australian Rail Track Corporation Ltd.  
Drawing standard in accordance with Hunter 8 Alliance standards

Used on / Next higher assembly:

Alternate DMS number:

|               |          |                      |       |         |          |
|---------------|----------|----------------------|-------|---------|----------|
| ARTC APPROVAL |          | Approved By          |       |         |          |
| Signed:       |          |                      |       |         |          |
| Rev           | Date     | Revision Description | Drawn | Checked | Approved |
| B             | 16.02.10 | ISSUED FOR COMMENT   | G.M.  |         |          |
| A             | 10.02.10 | ISSUED FOR COMMENT   | T.M.  |         |          |

Designing Company:  
GHD  
GHD Job Number:  
22-14471

Address:  
Level 3 GHD Tower, 24 Honeysuckle Drive  
Newcastle NSW 2300 Australia  
T 61 2 4979 9999 F 61 2 4979 9988  
E ntm@mail@ghd.com W www.ghd.com

Drawn  
T.MORTON

Designed  
R.STEPHENS

Approved

Conditions of Use:  
This document may only be used by GHD's client (and any other person who GHD had agreed can use this document) for the purpose for which it was prepared and must not be used by any other person or for any other purpose.

This Drawing must not be used for Construction unless signed as Approved

**Hunter**  
ALLIANCE

H8R DWG NUMBER **9B**

**H8R-DWG-S2G-GEN-1003**

MAITLAND TO MINIMBAH - THIRD TRACK  
**DETAIL PLAN**  
CH194km700 TO CH195km040

Sheet No.  
**3 OF 89**  
Scale (A1):  
1:500

1 2 3 4 5 6 7 8

A

B

C

D

E

A

B

C

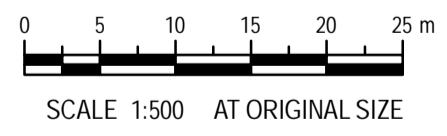
D

E



FROM SYDNEY  
JOINS DRAWING No. H8R-DWG-S2G-GEN-1003

JOINS DRAWING No. H8R-DWG-S2G-GEN-1005  
TO SINGLETON



**UNCONTROLLED DOCUMENT**

**PRELIMINARY**

© 2009 Australian Rail Track Corporation Ltd.  
Drawing standard in accordance with Hunter 8 Alliance standards

|               |  |     |          |                      |  |       |         |          |  |      |  |
|---------------|--|-----|----------|----------------------|--|-------|---------|----------|--|------|--|
| ARTC APPROVAL |  |     |          |                      |  |       |         |          |  |      |  |
| Approved By   |  |     |          |                      |  |       |         |          |  |      |  |
| Signed:       |  |     |          |                      |  |       |         |          |  |      |  |
| Approval Date |  | Rev | Date     | Revision Description |  | Drawn | Checked | Approved |  | Date |  |
|               |  | B   | 16.02.10 | ISSUED FOR COMMENT   |  | G.M.  |         |          |  |      |  |
|               |  | A   | 10.02.10 | ISSUED FOR COMMENT   |  | T.M.  |         |          |  |      |  |

|                                 |  |
|---------------------------------|--|
| Used on / Next higher assembly: |  |
| Alternate DMS number:           |  |

|  |  |
|--|--|
| Designing Company:<br>GHD<br>GHD Job Number:<br>22-14471 | Address:<br>Level 3 GHD Tower, 24 Honeysuckle Drive<br>Newcastle NSW 2300 Australia<br>T 61 2 4979 9999 F 61 2 4979 9988<br>E ntmial@ghd.com W www.ghd.com |
| Drawn:<br>T.MORTON                                       | Designed:<br>R.STEPHENS  |
| Drafting Check:  | Design Check:  |
| Approved:  | This Drawing must not be used for Construction unless signed as Approved   |

|  |                             |   |
|--|-----------------------------|---|
|  | H8R DWG NUMBER              | 9 B   |
|  | <b>H8R-DWG-S2G-GEN-1004</b> |   |
| MAITLAND TO MINIMBAH - THIRD TRACK<br><b>DETAIL PLAN</b><br>CH195km040 TO CH195km380 |                             | Sheet No.<br><b>4 OF 89</b><br>Scale (A1):<br>1:500 |

PLOT DATE: 18/02/2010 10:58AM  
 GHD FILEPATH: \\HTRS\01\GHD\_DWG\2214471\GIS\Map\General Arrangements\H8R-DWG-S2G-GEN-1003-1089\_A1\_Mapbook\_20100211\_A.mxd

1 2 3 4 5 6 7 8

F

1 2 3 4 5 6 7 8

A

B

C

D

E

A

B

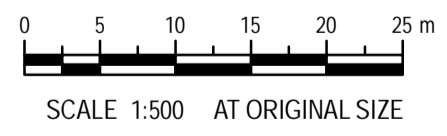
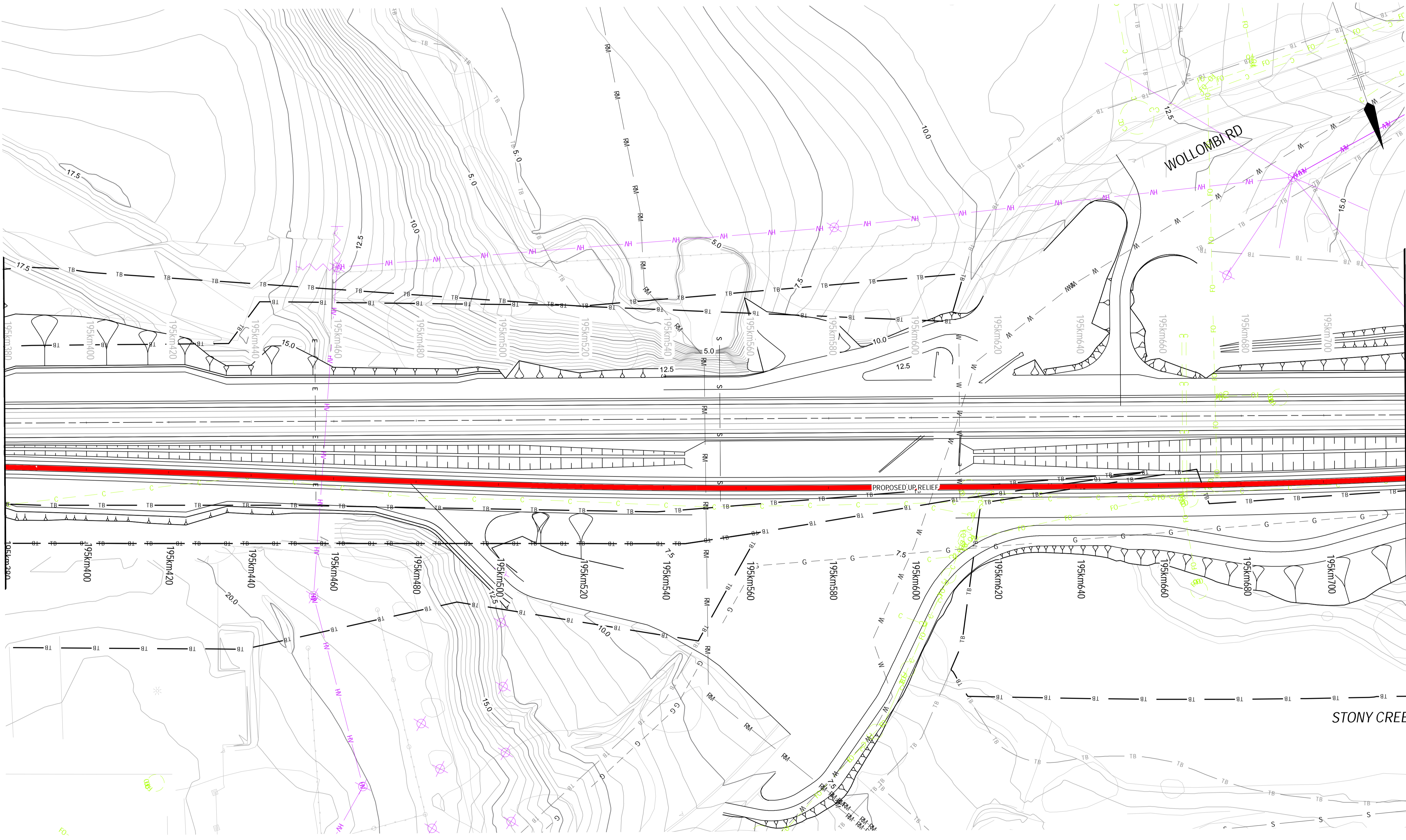
C

D

E

FROM SYDNEY  
JOINS DRAWING No. H8R-DWG-S2G-GEN-1004

TO SINGLETON  
JOINS DRAWING No. H8R-DWG-S2G-GEN-1006



**UNCONTROLLED DOCUMENT**

**PRELIMINARY**

© 2009 Australian Rail Track Corporation Ltd.  
Drawing standard in accordance with Hunter 8 Alliance standards

ARTC APPROVAL  
Approved By

Used on / Next higher assembly:

Signed:

Alternate DMS number:

Approval Date

|     |          |                      |
|-----|----------|----------------------|
| Rev | Date     | Revision Description |
| B   | 16.02.10 | ISSUED FOR COMMENT   |
| A   | 10.02.10 | ISSUED FOR COMMENT   |

|          |         |          |
|----------|---------|----------|
| Drawn    | Checked | Approved |
| T.MORTON | T.M.    | G.M.     |

Designing Company:  
GHD  
GHD Job Number:  
22-14471

Address:  
Level 3 GHD Tower, 24 Honeyeater Drive  
Newcastle NSW 2300 Australia  
T 61 2 4979 9999 F 61 2 4979 9988  
E ntm@mail@ghd.com W www.ghd.com

Drawn  
T.MORTON  
Drafting Check

Designed  
R.STEPHENS  
Design Check

Conditions of Use:  
This document may only be used by  
GHD's client (and any other person  
who GHD had agreed can use this  
document) for the purpose for which it  
was prepared and must not be used  
by any other person or for any other  
purpose.

Approved  
Date

This Drawing must not be  
used for Construction  
unless signed as Approved



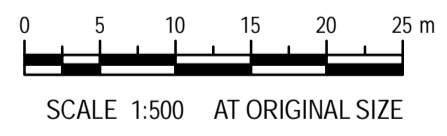
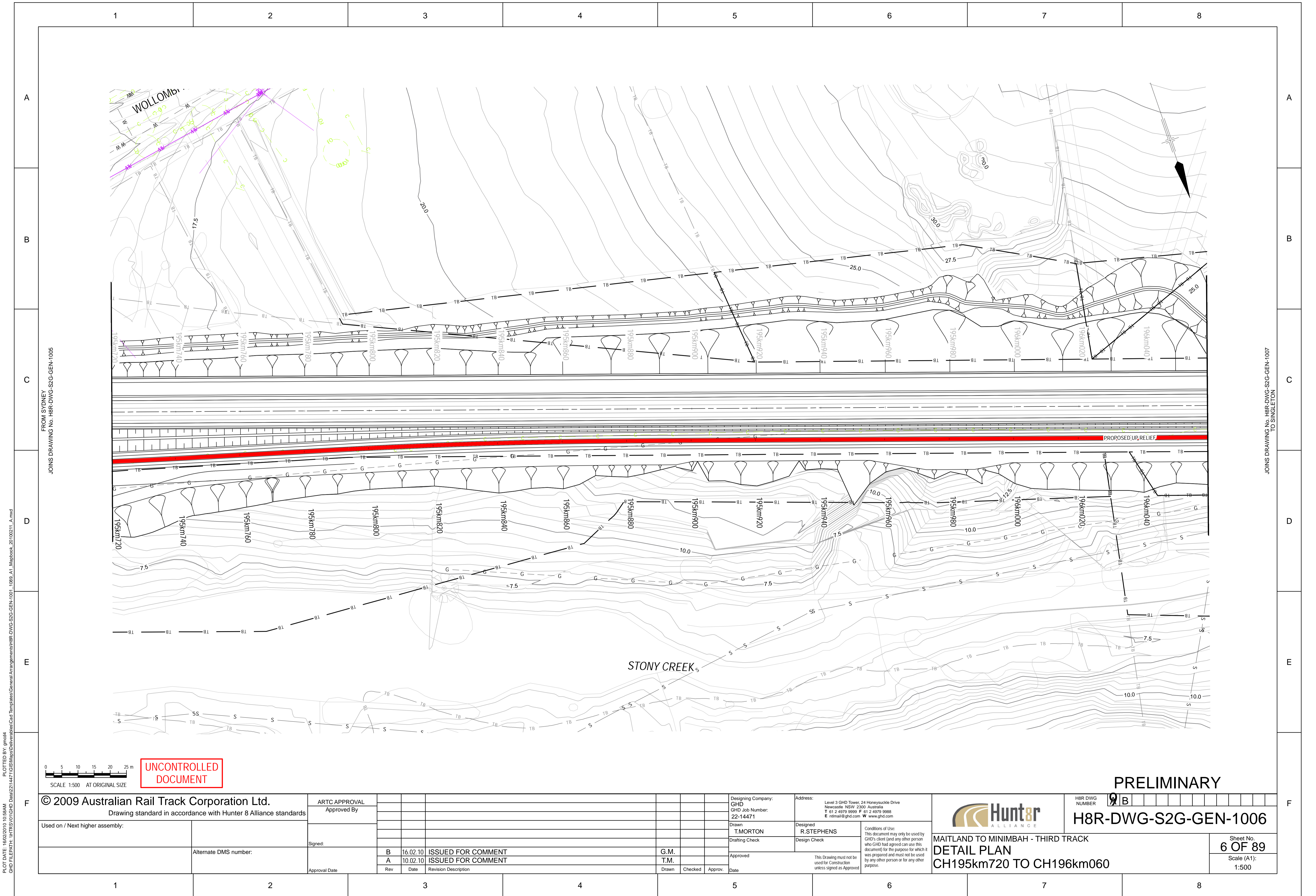
H8R DWG NUMBER **9B**  
**H8R-DWG-S2G-GEN-1005**

MAITLAND TO MINIMBAH - THIRD TRACK  
**DETAIL PLAN**  
**CH195km380 TO CH195km720**

Sheet No.  
**5 OF 89**  
Scale (A1):  
1:500

1 2 3 4 5 6 7 8

PLOT DATE: 18/02/2010 10:58AM  
GHD FILEPATH: \\NTS\01\GHD\_Data\2214471\GIS\Map\Drawings\Cad Templates\General Arrangements\H8R-DWG-S2G-GEN-1001-1089\_A1\_Mapbook\_20100211\_A.mxd



**UNCONTROLLED DOCUMENT**

© 2009 Australian Rail Track Corporation Ltd.  
Drawing standard in accordance with Hunter 8 Alliance standards

|               |     |          |                      |
|---------------|-----|----------|----------------------|
| ARTC APPROVAL |     |          |                      |
| Approved By   |     |          |                      |
| Signed:       |     |          |                      |
| Approval Date | Rev | Date     | Revision Description |
|               | B   | 16.02.10 | ISSUED FOR COMMENT   |
|               | A   | 10.02.10 | ISSUED FOR COMMENT   |

|                    |          |                 |   |
|--------------------|----------|-----------------|---|
| Designing Company: | GHD      | Address:        | Level 3 GHD Tower, 24 Honeyeater Drive<br>Newcastle NSW 2300 Australia<br>T 61 2 4979 9999 F 61 2 4979 9988<br>E ntm@mail@ghd.com W www.ghd.com |
| GHD Job Number:    | 22-14471 | Drawn:          | T.MORTON  |
|                    |          | Designed:       | R.STEPHENS  |
|                    |          | Drafting Check: |   |
|                    |          | Design Check:   |   |
| Approved:          |          | Date:           |   |

**PRELIMINARY**

H8R-DWG-S2G-GEN-1006

MAITLAND TO MINIMBAH - THIRD TRACK  
**DETAIL PLAN**  
CH195km720 TO CH196km060

Sheet No.  
**6 OF 89**  
Scale (A1):  
1:500

PLOT DATE: 16/02/2010 10:58AM  
GHD FILEPATH: \\NTSMS01\GHD\_Data\2214471\GIS\Map\General Arrangements\H8R-DWG-S2G-GEN-1006\_A1\_Mapbook\_20100211\_A.mxd

FROM SYDNEY  
JOINS DRAWING No. H8R-DWG-S2G-GEN-1005

TO SINGLETON  
JOINS DRAWING No. H8R-DWG-S2G-GEN-1007

1 2 3 4 5 6 7 8

A

B

C

D

E

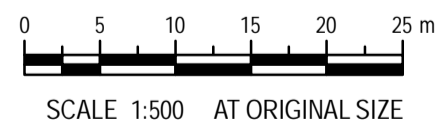
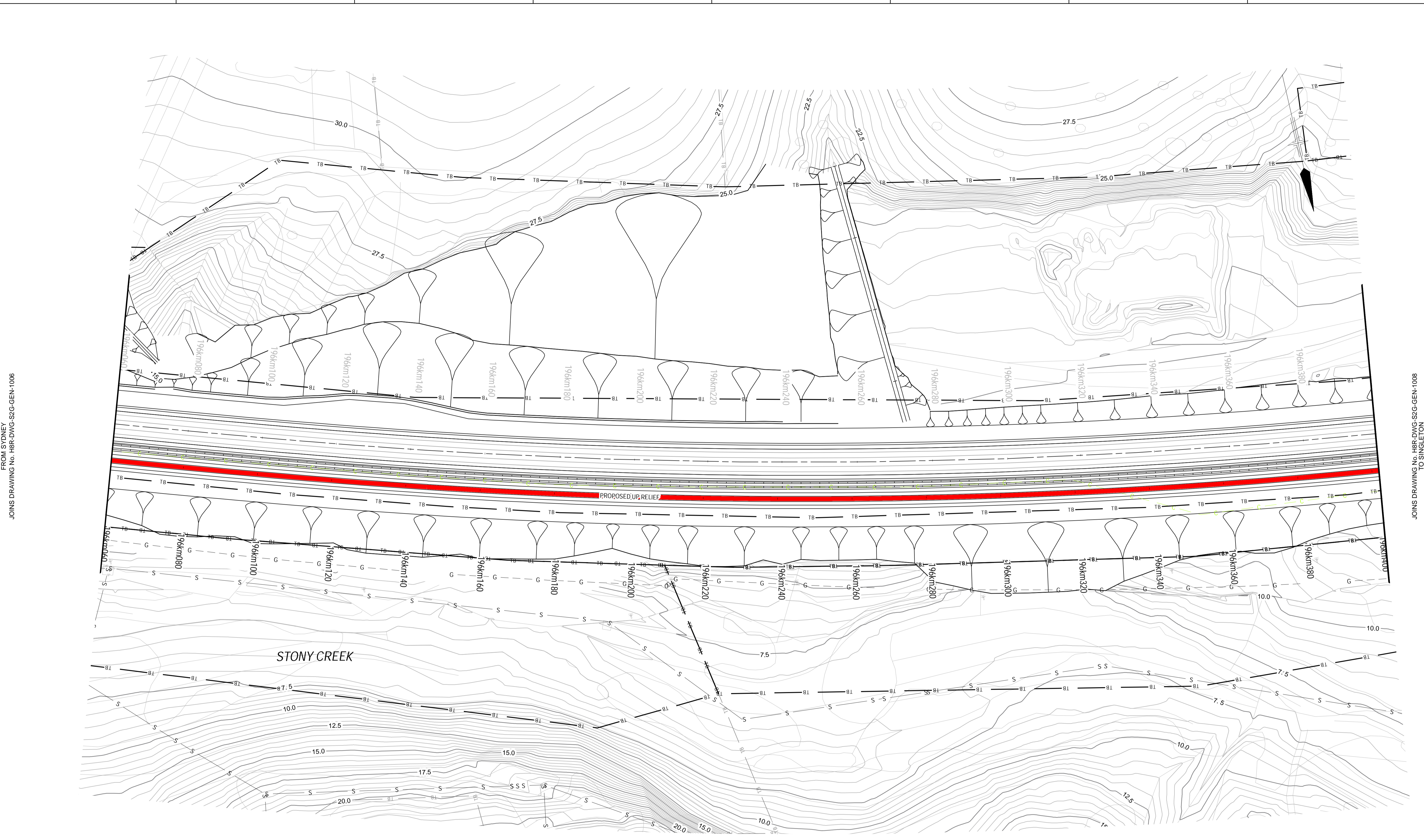
A

B

C

D

E



**UNCONTROLLED DOCUMENT**

© 2009 Australian Rail Track Corporation Ltd.  
Drawing standard in accordance with Hunter 8 Alliance standards

|               |          |                      |       |
|---------------|----------|----------------------|-------|
| ARTC APPROVAL |          |                      |       |
| Approved By   |          |                      |       |
| Signed:       |          |                      |       |
| Rev           | Date     | Revision Description | Drawn |
| B             | 16.02.10 | ISSUED FOR COMMENT   | G.M.  |
| A             | 10.02.10 | ISSUED FOR COMMENT   | T.M.  |
| Rev           | Date     | Revision Description | Drawn |
|               |          |                      |       |
|               |          |                      |       |
|               |          |                      |       |

|  |   |
|--|---|
| Designing Company:<br>GHD<br>GHD Job Number:<br>22-14471                 | Address:<br>Level 3 GHD Tower, 24 Honeyesuckle Drive<br>Newcastle NSW 2300 Australia<br>T 61 2 4979 9999 F 61 2 4979 9988<br>E ntm@mail@ghd.com W www.ghd.com |
| Drawn<br>T.MORTON  | Designed<br>R.STEPHENS  |
| Drafting Check   | Design Check  |
| Approved   | Date  |
| This Drawing must not be used for Construction unless signed as Approved |   |

**PRELIMINARY**

H8R-DWG-S2G-GEN-1007

**Hunter 8 ALLIANCE**

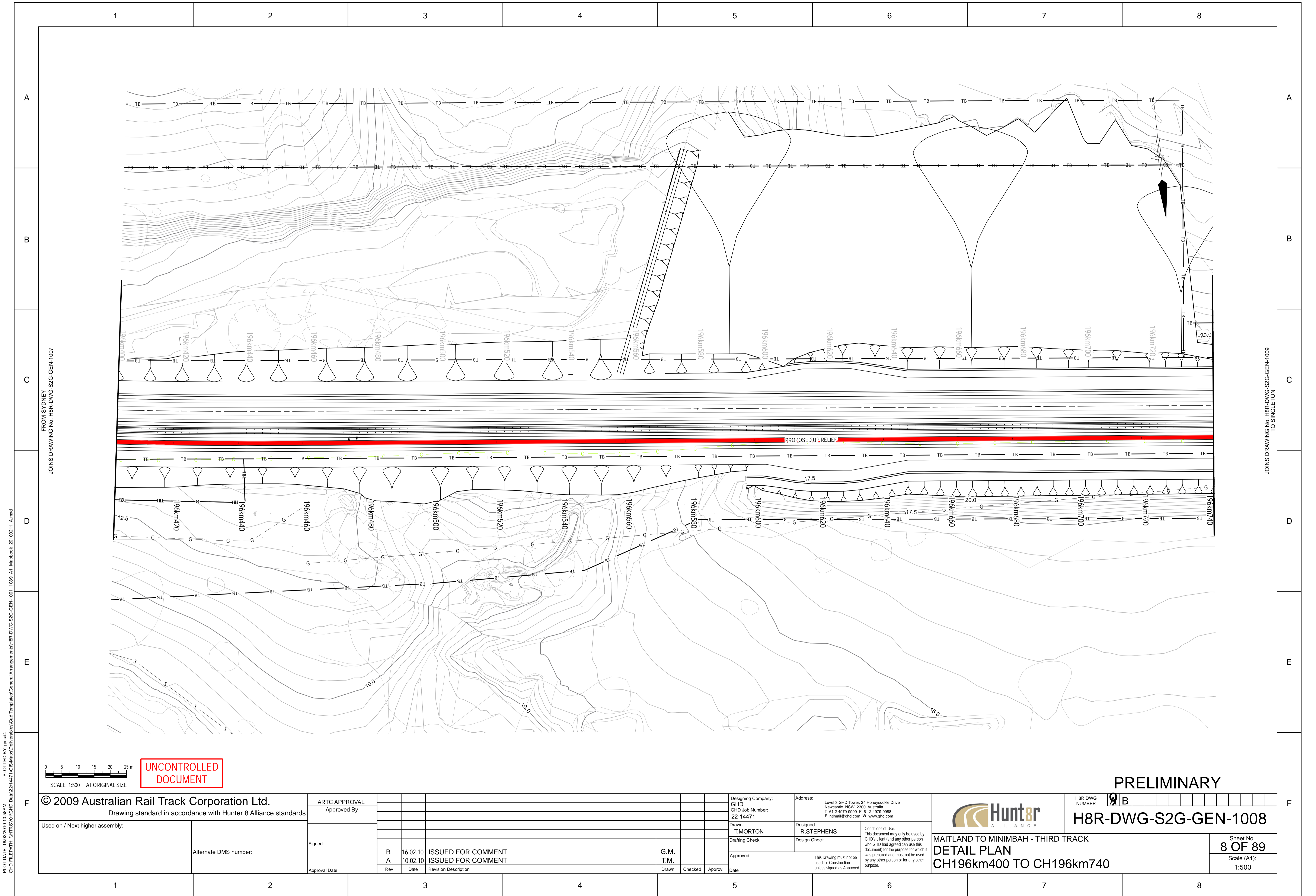
MAITLAND TO MINIMBAH - THIRD TRACK  
**DETAIL PLAN**  
CH196km060 TO CH196km400

Sheet No.  
**7 OF 89**  
Scale (A1):  
1:500

1 2 3 4 5 6 7 8

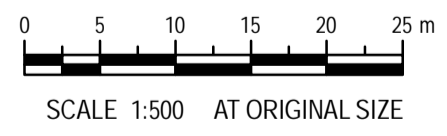
PLOT DATE: 16/02/2010 10:58AM  
GHD FILEPATH: \\NTS\01\GHD\_Data\2214471\GIS\Map\General Arrangements\H8R-DWG-S2G-GEN-1007-1089\_A1\_Mapbook\_20100211\_A.mxd

JOINS DRAWING No. H8R-DWG-S2G-GEN-1008 TO SINGLETON



FROM SYDNEY  
JOINS DRAWING No. H8R-DWG-S2G-GEN-1007

JOINS DRAWING No. H8R-DWG-S2G-GEN-1009  
TO SINGLETON



**UNCONTROLLED DOCUMENT**

**PRELIMINARY**

© 2009 Australian Rail Track Corporation Ltd.  
Drawing standard in accordance with Hunter 8 Alliance standards

|               |          |                      |       |
|---------------|----------|----------------------|-------|
| ARTC APPROVAL |          |                      |       |
| Approved By   |          |                      |       |
| Signed:       |          |                      |       |
| Approval Date |          |                      |       |
| Rev           | Date     | Revision Description | Drawn |
| B             | 16.02.10 | ISSUED FOR COMMENT   | G.M.  |
| A             | 10.02.10 | ISSUED FOR COMMENT   | T.M.  |

|  |  |
|--|--|
| Designing Company:<br>GHD<br>GHD Job Number:<br>22-14471 | Address:<br>Level 3 GHD Tower, 24 Honeysuckle Drive<br>Newcastle NSW 2300 Australia<br>T 61 2 4979 9999 F 61 2 4979 9988<br>E ntm@mail@ghd.com W www.ghd.com |
| Drawn<br>T.MORTON  | Designed<br>R.STEPHENS   |
| Drafting Check   | Design Check   |
| Approved   | Date   |



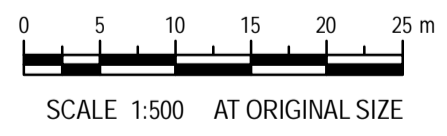
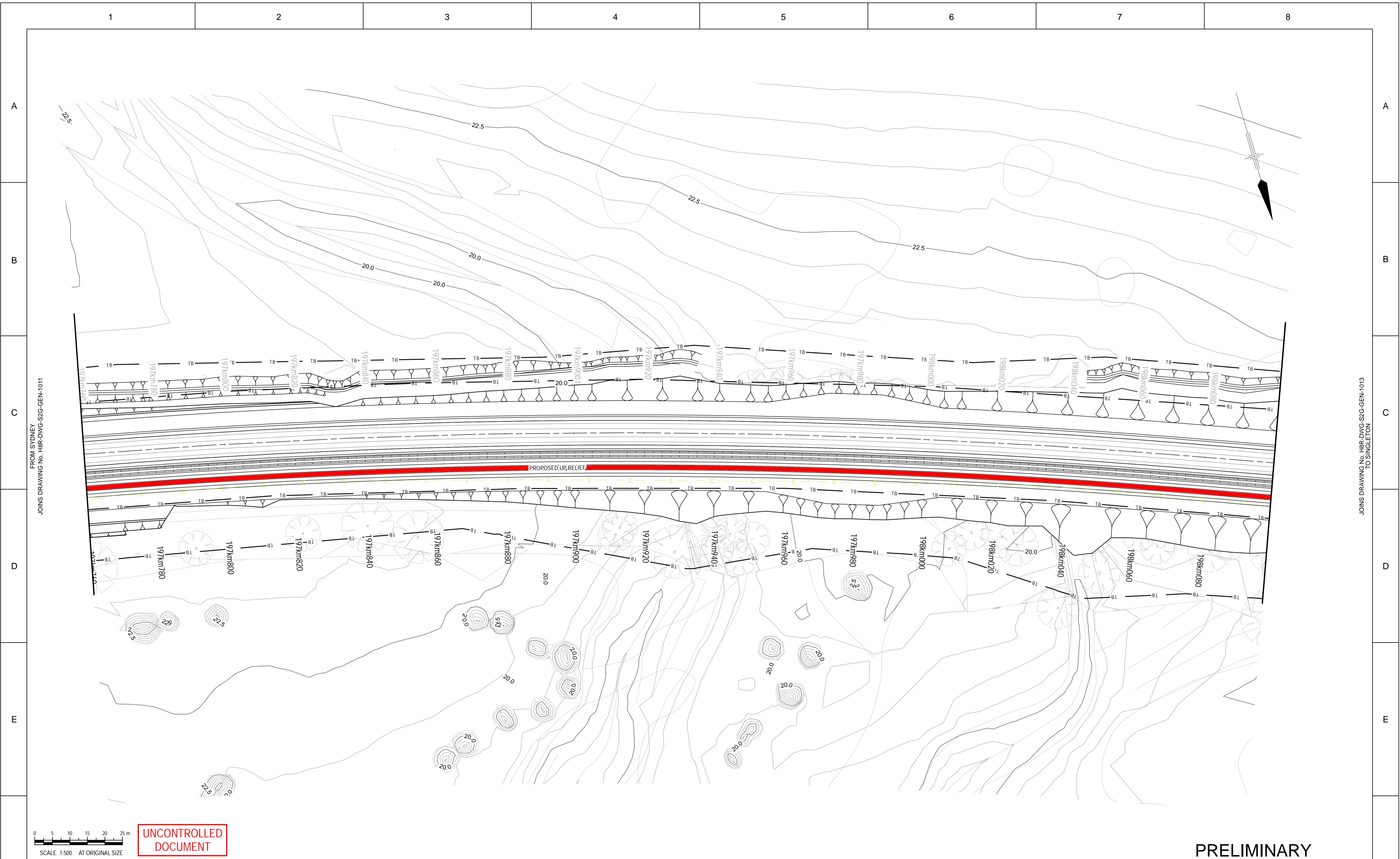
|   |         |
|---|---------|
| H8R DWG NUMBER  | 9 B     |
| <b>H8R-DWG-S2G-GEN-1008</b>   |         |
| MAITLAND TO MINIMBAH - THIRD TRACK<br>DETAIL PLAN<br>CH196km400 TO CH196km740 |         |
| Sheet No.   | 8 OF 89 |
| Scale (A1):   | 1:500   |

PLOT DATE: 16/02/2010 10:58AM  
GHD FILEPATH: \\NTSMS01\GHD\_Data\2214471\GIS\Map\Deliverables\Cad Templates\General Arrangements\H8R-DWG-S2G-GEN-1001-1089\_A1\_Mapbook\_20100211\_A.mxd









UNCONTROLLED DOCUMENT

PRELIMINARY

© 2009 Australian Rail Track Corporation Ltd.  
Drawing standard in accordance with Hunter 8 Alliance standards

|               |          |                      |       |         |          |
|---------------|----------|----------------------|-------|---------|----------|
| ARTC APPROVAL |          |                      |       |         |          |
| Approved By   |          |                      |       |         |          |
| Signed:       |          |                      |       |         |          |
| Rev           | Date     | Revision Description | Drawn | Checked | Approved |
| B             | 16.02.10 | ISSUED FOR COMMENT   | G.M.  |         |          |
| A             | 10.02.10 | ISSUED FOR COMMENT   | T.M.  |         |          |

|  |  |
|--|--|
| Designing Company:<br>GHD<br>GHD Job Number:<br>22-14471 | Address:<br>Level 3 GHD Tower, 24 Honeysuckle Drive<br>Newcastle NSW 2300 Australia<br>T 61 2 4979 9999 F 61 2 4979 9988<br>E ntm@mail@ghd.com W www.ghd.com |
| Drawn<br>T.MORTON  | Designed<br>R.STEPHENS   |
| Approved   |  |
| Date   |  |

H8R DWG NUMBER **9B**

H8R-DWG-S2G-GEN-1012

MAITLAND TO MINIMBAH - THIRD TRACK  
**DETAIL PLAN**  
CH197km760 TO CH198km100

Sheet No.  
**12 OF 89**

Scale (A1):  
1:500

PLOT DATE: 16/02/2010 10:58AM  
GHD FILEPATH: \\NTSMS01\GHD\_Drawing\2214471\GIS\Map\General Arrangements\H8R-DWG-S2G-GEN-1012\_1089\_A1\_Mapbook\_20100211\_A.mxd

FROM SYDNEY  
JOINS DRAWING No. H8R-DWG-S2G-GEN-1011

TO SINGLETON  
JOINS DRAWING No. H8R-DWG-S2G-GEN-1013

1 2 3 4 5 6 7 8

A

B

C

D

E

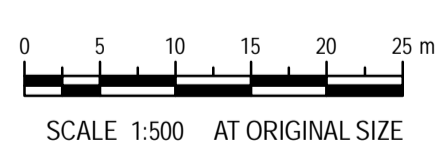
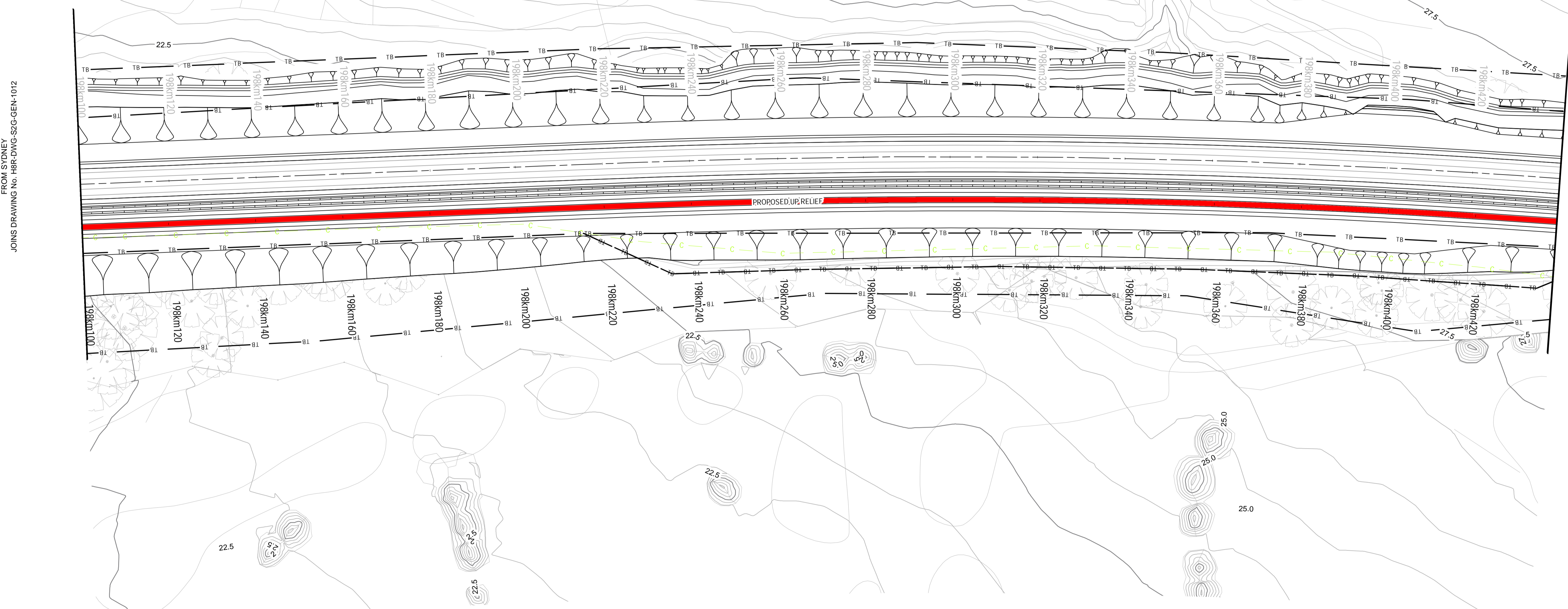
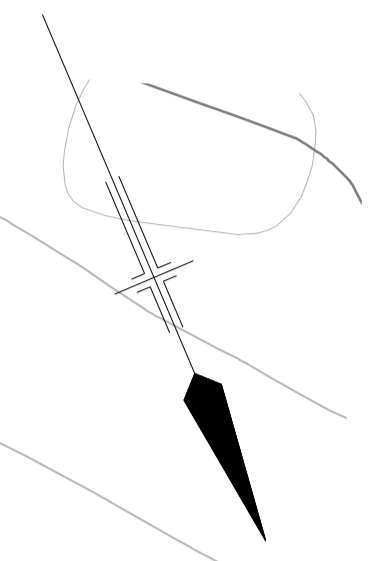
A

B

C

D

E



**UNCONTROLLED DOCUMENT**

**PRELIMINARY**

© 2009 Australian Rail Track Corporation Ltd.  
Drawing standard in accordance with Hunter 8 Alliance standards

|               |          |                      |       |         |          |
|---------------|----------|----------------------|-------|---------|----------|
| ARTC APPROVAL |          |                      |       |         |          |
| Approved By   |          |                      |       |         |          |
| Signed:       |          |                      |       |         |          |
| Rev           | Date     | Revision Description | Drawn | Checked | Approved |
| B             | 16.02.10 | ISSUED FOR COMMENT   | G.M.  |         |          |
| A             | 10.02.10 | ISSUED FOR COMMENT   | T.M.  |         |          |

|  |  |
|--|--|
| Designing Company:<br>GHD<br>GHD Job Number:<br>22-14471 | Address:<br>Level 3 GHD Tower, 24 Honeysuckle Drive<br>Newcastle NSW 2300 Australia<br>T 61 2 4979 9999 F 61 2 4979 9988<br>E ntmial@ghd.com W www.ghd.com |
| Drawn<br>T.MORTON  | Designed<br>R.STEPHENS   |
| Drafting Check   | Design Check   |
| Approved   | Date   |

H8R-DWG-S2G-GEN-1013

MAITLAND TO MINIMBAH - THIRD TRACK  
**DETAIL PLAN**  
CH198km100 TO CH198km440

Sheet No.  
**13 OF 89**

Scale (A1):  
1:500

1 2 3 4 5 6 7 8

PLOT DATE: 18/02/2010 10:58AM GHD FILEPATH: \\HTRS\01\GHD\_Data\2214471\GIS\Map\Deliverables\Cad Templates\General Arrangements\H8R-DWG-S2G-GEN-1013\_1089\_A1\_Mapbook\_20100211\_A.mxd

JOINS DRAWING No. H8R-DWG-S2G-GEN-1014 TO SINGLETON

1 2 3 4 5 6 7 8

A

B

C

D

E

F

A

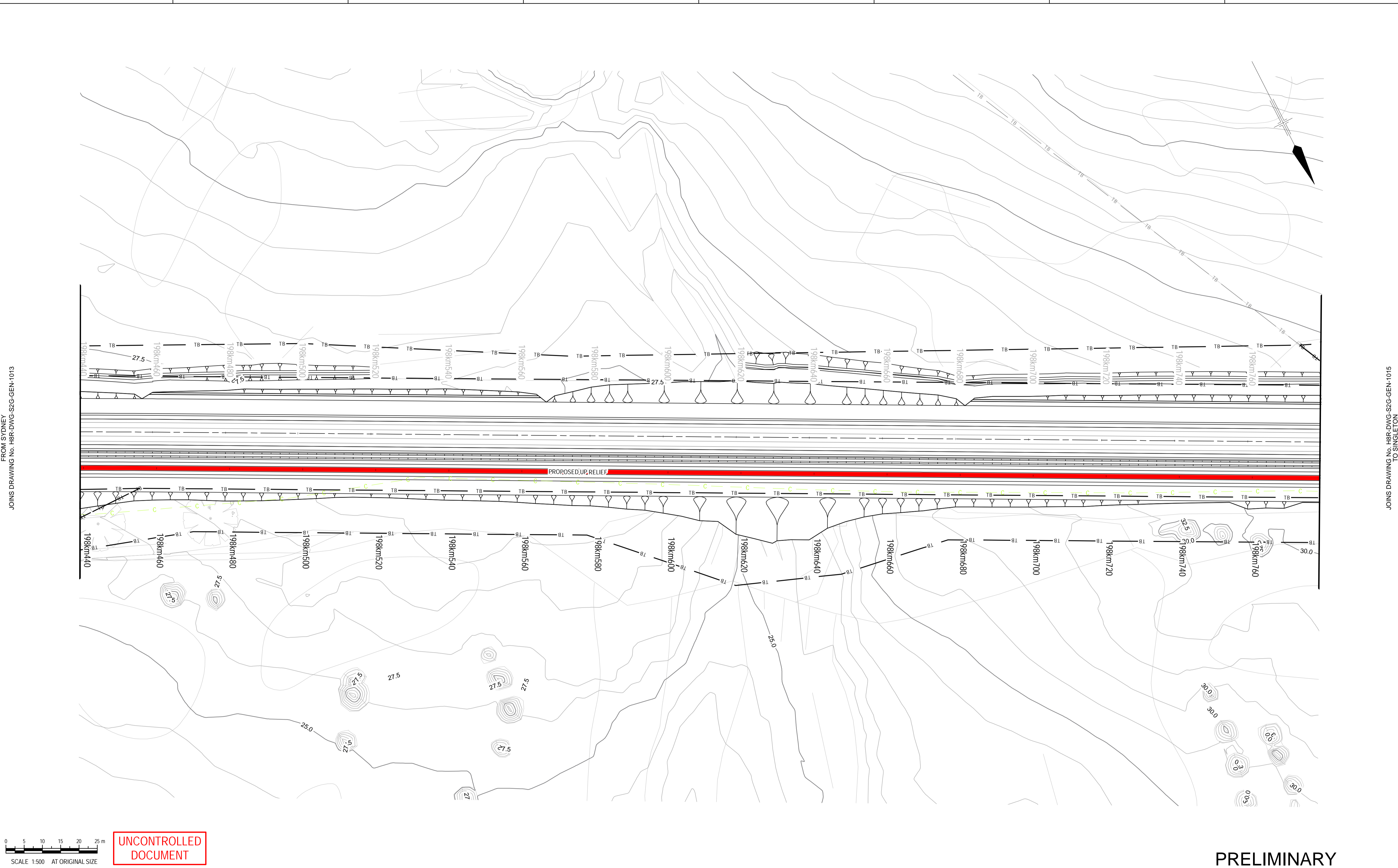
B

C

D

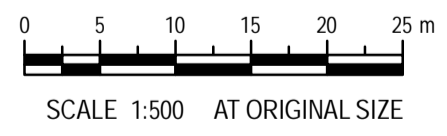
E

F



FROM SYDNEY  
JOINS DRAWING No. H8R-DWG-S2G-GEN-1013

JOINS DRAWING No. H8R-DWG-S2G-GEN-1015  
TO SINGLETON



**UNCONTROLLED DOCUMENT**

**PRELIMINARY**

© 2009 Australian Rail Track Corporation Ltd.  
Drawing standard in accordance with Hunter 8 Alliance standards

Used on / Next higher assembly:

Alternate DMS number:

|               |  |            |  |                    |  |                      |  |       |  |         |  |
|---------------|--|------------|--|--------------------|--|----------------------|--|-------|--|---------|--|
| ARTC APPROVAL |  |            |  |                    |  |                      |  |       |  |         |  |
| Approved By   |  |            |  |                    |  |                      |  |       |  |         |  |
| Signed:       |  |            |  |                    |  |                      |  |       |  |         |  |
| Approval Date |  | B 16.02.10 |  | ISSUED FOR COMMENT |  | G.M.                 |  |       |  |         |  |
|               |  | A 10.02.10 |  | ISSUED FOR COMMENT |  | T.M.                 |  |       |  |         |  |
|               |  | Rev        |  | Date               |  | Revision Description |  | Drawn |  | Checked |  |
|               |  |            |  |                    |  |                      |  | Date  |  | Date    |  |

Designing Company:  
GHD  
GHD Job Number:  
22-14471

Address:  
Level 3 GHD Tower, 24 Honeysuckle Drive  
Newcastle NSW 2300 Australia  
T 61 2 4979 9999 F 61 2 4979 9988  
E ntm@mail@ghd.com W www.ghd.com

Drawn:  
T.MORTON

Designed:  
R.STEPHENS

Drafting Check:  
Design Check

Approved:

This Drawing must not be used for Construction unless signed as Approved.

Hunter 8 ALLIANCE

H8R DWG NUMBER: 9 B

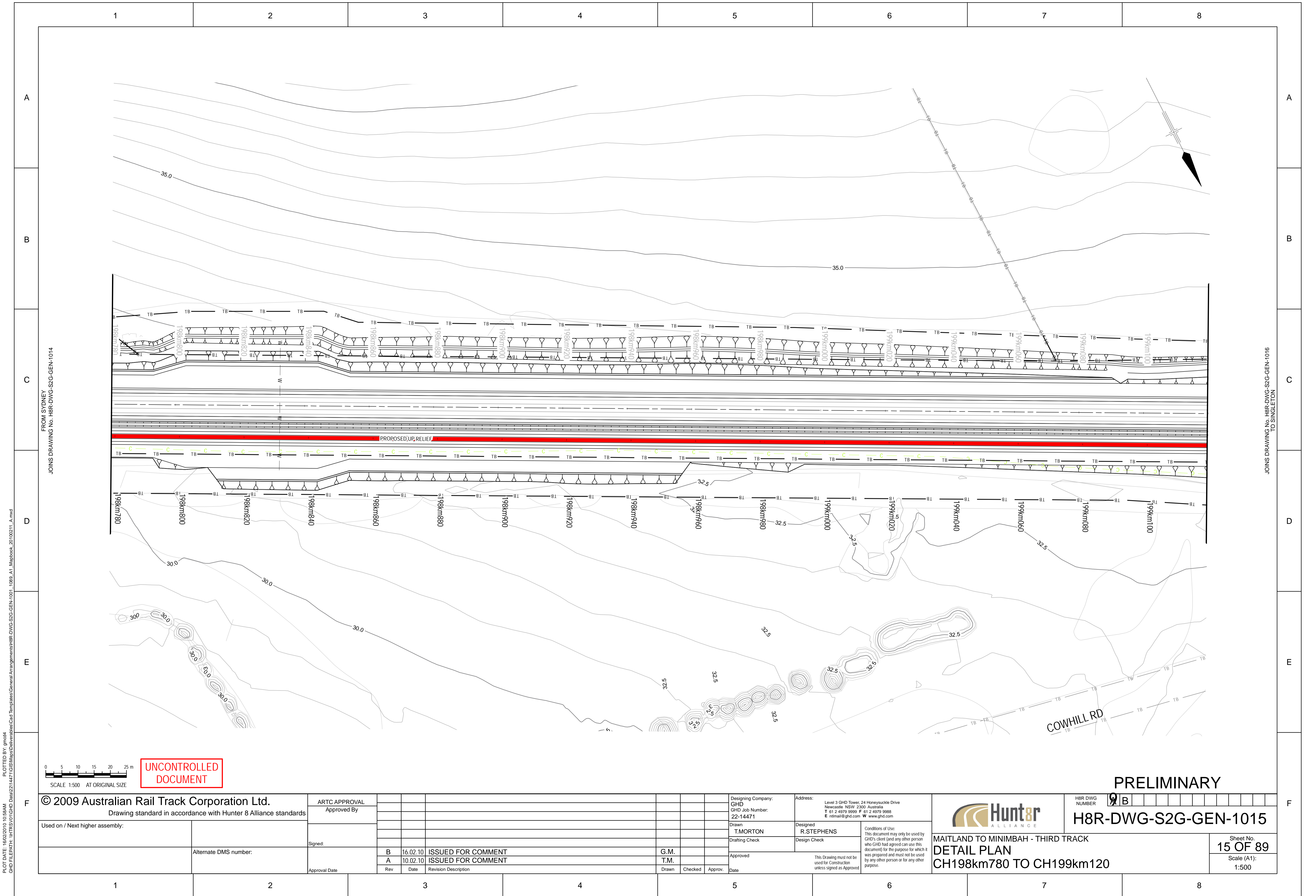
**H8R-DWG-S2G-GEN-1014**

MAITLAND TO MINIMBAH - THIRD TRACK  
**DETAIL PLAN**  
CH198km440 TO CH198km780

Sheet No.  
**14 OF 89**  
Scale (A1):  
1:500

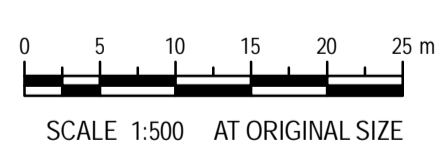
1 2 3 4 5 6 7 8

PLOT DATE: 18/02/2010 10:58AM  
GHD FILEPATH: \\HTRS\01\GHD\_Data\2214471\GIS\Map\Batteries\Cad Templates\General Arrangements\H8R-DWG-S2G-GEN-1014-1089\_A1\_Mapbook\_20100211\_A.mxd



FROM SYDNEY  
JOINS DRAWING No. H8R-DWG-S2G-GEN-1014

JOINS DRAWING No. H8R-DWG-S2G-GEN-1016  
TO SINGLETON



**UNCONTROLLED DOCUMENT**

**PRELIMINARY**

© 2009 Australian Rail Track Corporation Ltd.  
Drawing standard in accordance with Hunter 8 Alliance standards

Used on / Next higher assembly:

Alternate DMS number:

|               |          |                      |       |         |          |
|---------------|----------|----------------------|-------|---------|----------|
| ARTC APPROVAL |          |                      |       |         |          |
| Approved By   |          |                      |       |         |          |
| Signed:       |          |                      |       |         |          |
| Approval Date |          |                      |       |         |          |
| Rev           | Date     | Revision Description | Drawn | Checked | Approved |
| B             | 16.02.10 | ISSUED FOR COMMENT   | G.M.  |         |          |
| A             | 10.02.10 | ISSUED FOR COMMENT   | T.M.  |         |          |

Designing Company:  
GHD  
GHD Job Number:  
22-14471

Address:  
Level 3 GHD Tower, 24 Honeysuckle Drive  
Newcastle NSW 2300 Australia  
T 61 2 4979 9999 F 61 2 4979 9988  
E ntm@mail@ghd.com W www.ghd.com

Drawn  
T.MORTON

Designed  
R.STEPHENS

Drafting Check  
Design Check

Approved

This Drawing must not be used for Construction unless signed as Approved

Hunter 8 ALLIANCE

H8R DWG NUMBER 9/B

**H8R-DWG-S2G-GEN-1015**

MAITLAND TO MINIMBAH - THIRD TRACK  
**DETAIL PLAN**  
CH198km780 TO CH199km120

Sheet No.  
**15 OF 89**  
Scale (A1):  
1:500

PLOT DATE: 18/02/2010 10:58AM  
GHD FILEPATH: \\HTRS\01\GHD\_DWG\2214471\GIS\Map\Barr\Barr\Barr\Cad Templates\General Arrangements\H8R-DWG-S2G-GEN-1015-1089\_A1\_Mapbook\_20100211\_A.mxd