



UTS University of Technology, Sydney

UTS Student Housing: Peter Johnson Building development application

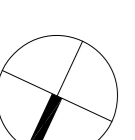
Level 2 - Podium Plan

1:200 @ A1, 1:400 @ A3
26th March 2009
3531_DA004

Title
Scale
Date

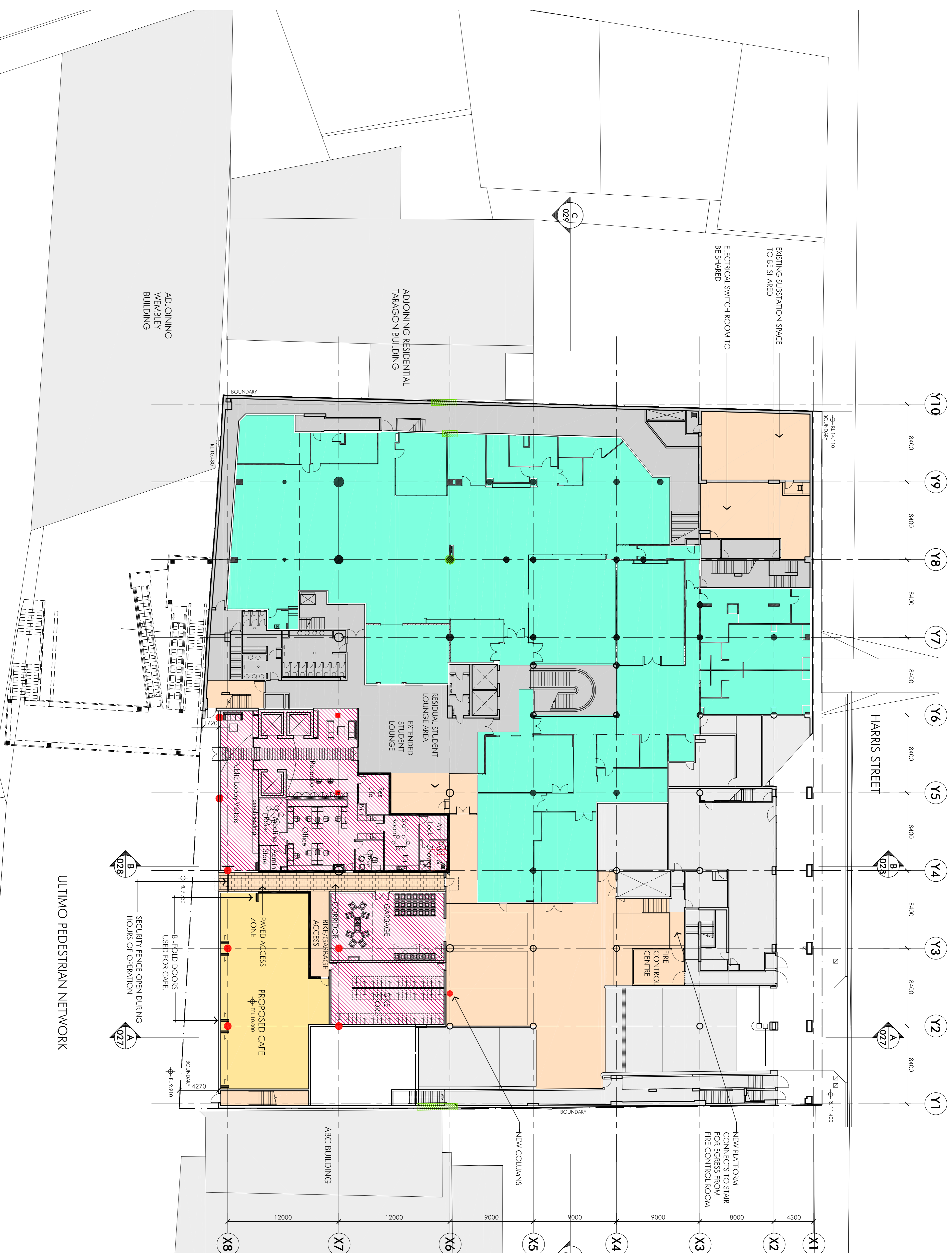
Number
0 2 4

10
20m



nettleon frbe partnership pty ltd ABN 58 161 683 122
117 willoughby road sydney, nsw 1588 2065
02 9431 6431 02 9439 7474
© nettleonfrbe.com.au or nettleonfrbe.com.au

ULTIMO PEDESTRIAN NETWORK



- KEY**
- DEMOLISHED AREAS ELEMENTS SHOWN DASHED
 - EXISTING UTS SPACE - NOT IN SCOPE OF WORKS
 - UNILODGE OPERATIONAL SPACE
 - PROPOSED UTS SPACE - CAFE
 - L2 FITOUT ADDITIONS - NOT IN SCOPE OF WORK.
 - SHARED SPACE
 - STRUCTURAL UPGRADE TO EXISTING REQUIRED