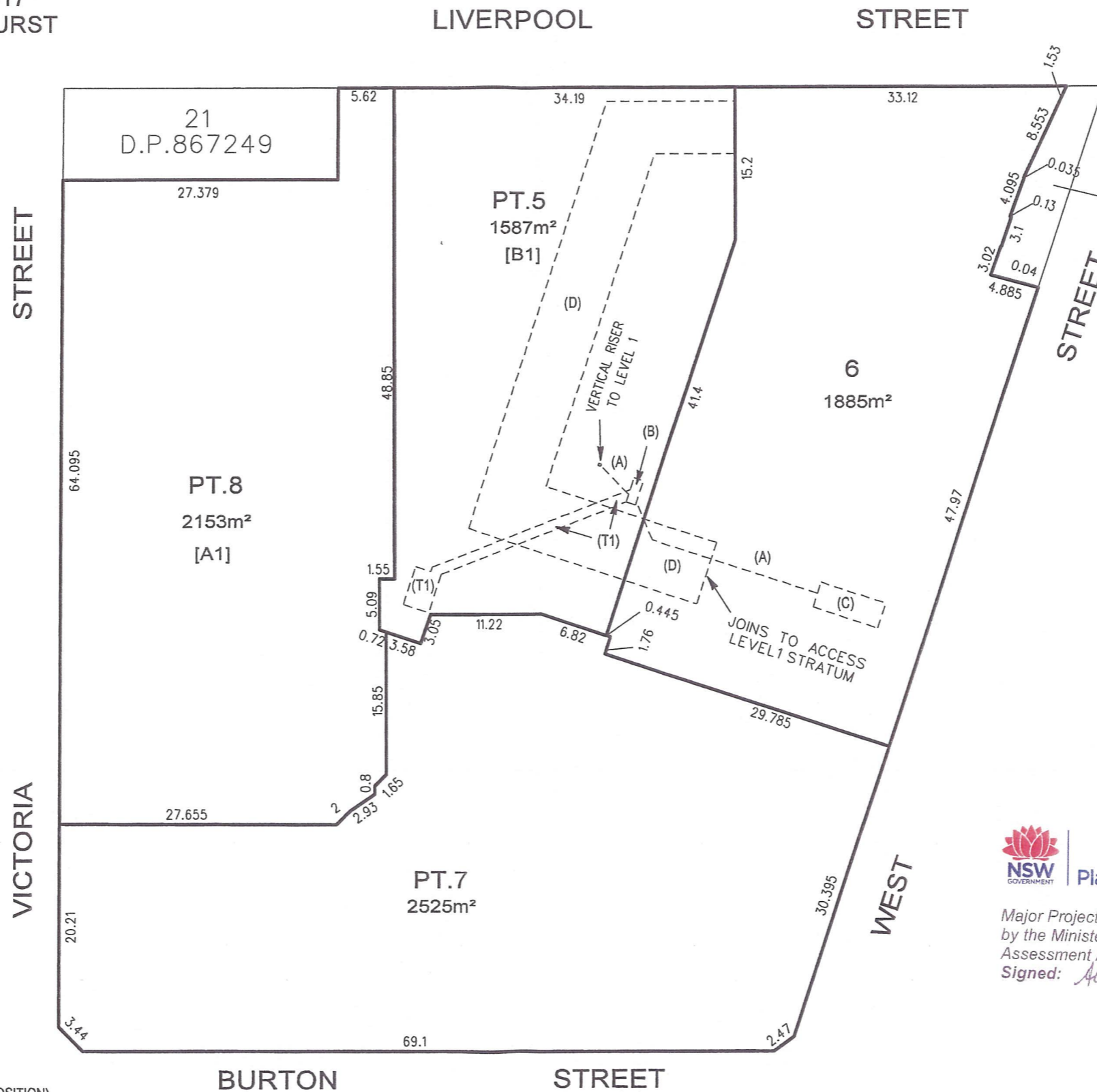


**PLAN**  
**OF PROPOSED SUBDIVISION OF LOTS 28 & 29**  
**D.P.881417 & LOT 10 D.P.846558 AND**  
**CONSOLIDATION OF LOT 22 D.P.867249**  
**& LOTS 24-27 INCL. D.P.881417**  
**VICTORIA STREET, DARLINGHURST**  
**CITY OF SYDNEY**

1:500  
**BASEMENT**



No.520  
 Bk.3286

**STRATUM STATEMENTS**  
 [A1] PT.8 INCLUDES BASEMENTS 1, 2 & 3  
 [B1] PT.5 INCLUDES BASEMENT LEVEL

NOTE :  
 DIMENSIONS AND AREAS SHOWN HEREON  
 ARE SUBJECT TO SURVEY  
 EASEMENTS SHOWN ARE PROPOSED ONLY  
 AND MAY NOT REFLECT CURRENT  
 EASEMENTS REGISTERED ON TITLE

- (A) EASEMENT FOR DIESEL OVER EXISTING LINE OF PIPES (APPROX. POSITION)
- (B) EASEMENT FOR DIESEL PUMP (LIMITED IN STRATUM)
- (C) EASEMENT FOR DIESEL TANK (LIMITED IN STRATUM)
- (D) EASEMENT FOR ACCESS (LIMITED IN STRATUM)
- (T1) EASEMENT FOR MAINTENANCE ACCESS (L.I.S.)

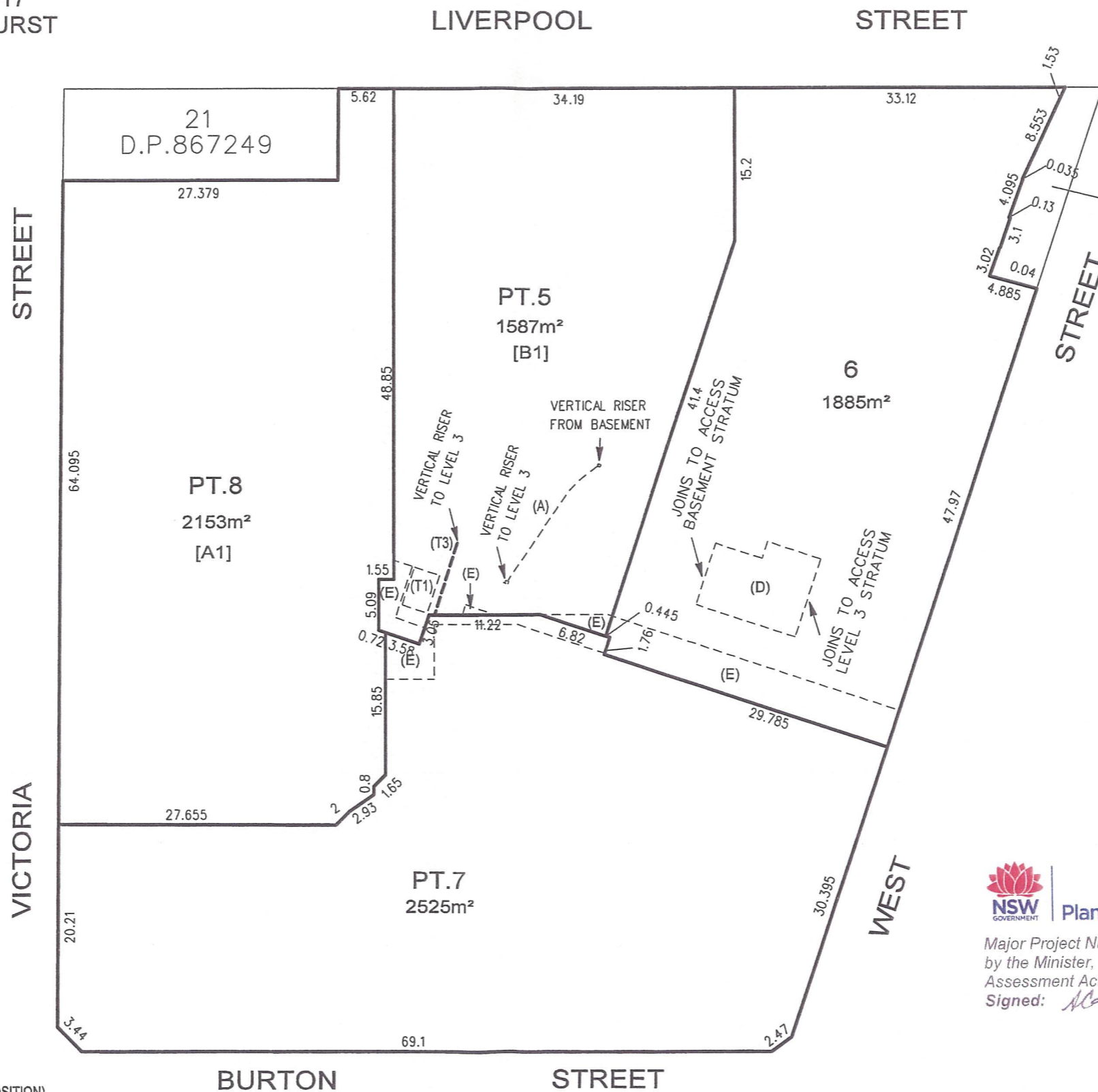


Major Project Number: 09\_0011, approved on 12 January 2010  
 by the Minister, in accordance with the Environmental Planning &  
 Assessment Act 1979, subject to conditions of approval.  
 Signed: *Alaspencer*

**RYGATE & COMPANY PTY LIMITED**  
**SURVEYORS**  
 LEVEL 3, 81 YORK STREET, SYDNEY 2000  
 PHONE 9262 6800 FAX 9262 6843  
 ABN 61 001 204897

**PLAN**  
**OF PROPOSED SUBDIVISION OF LOTS 28 & 29**  
**D.P.881417 & LOT 10 D.P.846558 AND**  
**CONSOLIDATION OF LOT 22 D.P.867249**  
**& LOTS 24-27 INCL. D.P.881417**  
**VICTORIA STREET, DARLINGHURST**  
**CITY OF SYDNEY**

1:500  
**LEVEL 1**



**STRATUM STATEMENTS**  
 [A1] PT.8 INCLUDES LEVELS 1 & 2  
 [B1] PT.5 INCLUDES LEVEL 1

NOTE :  
 DIMENSIONS AND AREAS SHOWN HEREON  
 ARE SUBJECT TO SURVEY

EASEMENTS SHOWN ARE PROPOSED ONLY  
 AND MAY NOT REFLECT CURRENT  
 EASEMENTS REGISTERED ON TITLE

- (A) EASEMENT FOR DIESEL OVER EXISTING LINE OF PIPES (APPROX. POSITION)
- (D) EASEMENT FOR ACCESS (LIMITED IN STRATUM)
- (E) EASEMENT FOR SERVICES (GAS & STORMWATER) - (LIMITED IN STRATUM)
- (T1) EASEMENT FOR MAINTENANCE ACCESS (L.I.S.)
- (T3) EASEMENT FOR VACUUM OVER EXISTING LINE OF PIPES (APPROX. POSITION)



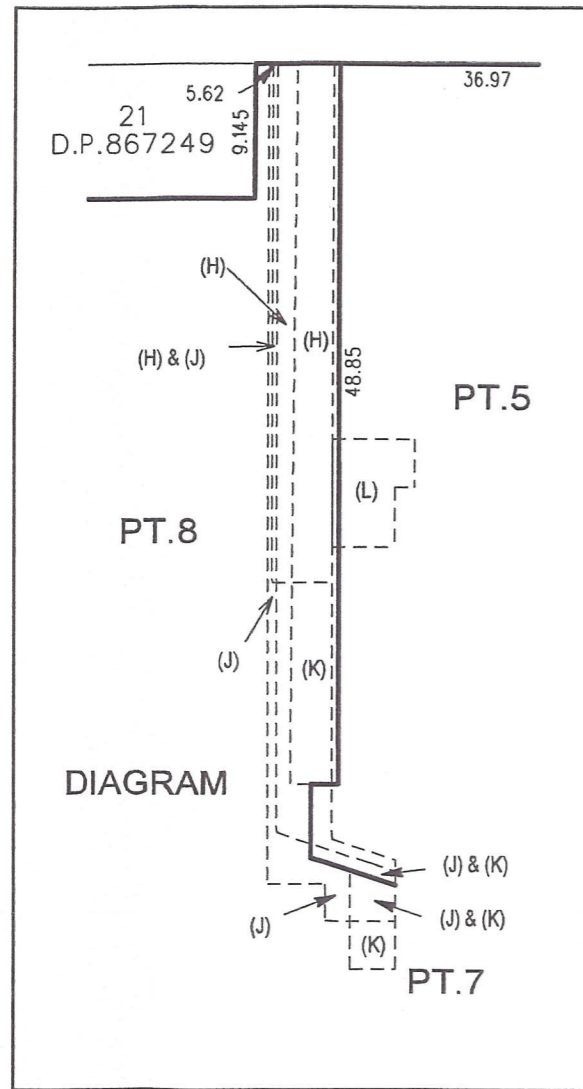
Major Project Number: 09\_0011, approved on 12 January 2010  
 by the Minister, in accordance with the Environmental Planning &  
 Assessment Act 1979, subject to conditions of approval.  
 Signed: *Macpender*

**RYGATE & COMPANY PTY LIMITED**  
**SURVEYORS**  
 LEVEL 3, 81 YORK STREET, SYDNEY 2000  
 PHONE 9262 6800 FAX 9262 6843  
 ABN 61 001 204897

**PLAN**  
**OF PROPOSED SUBDIVISION OF LOTS 28 & 29**  
**D.P.881417 & LOT 10 D.P.846558 AND**  
**CONSOLIDATION OF LOT 22 D.P.867249**  
**& LOTS 24-27 INCL. D.P.881417**  
**VICTORIA STREET, DARLINGHURST**  
**CITY OF SYDNEY**

1:500

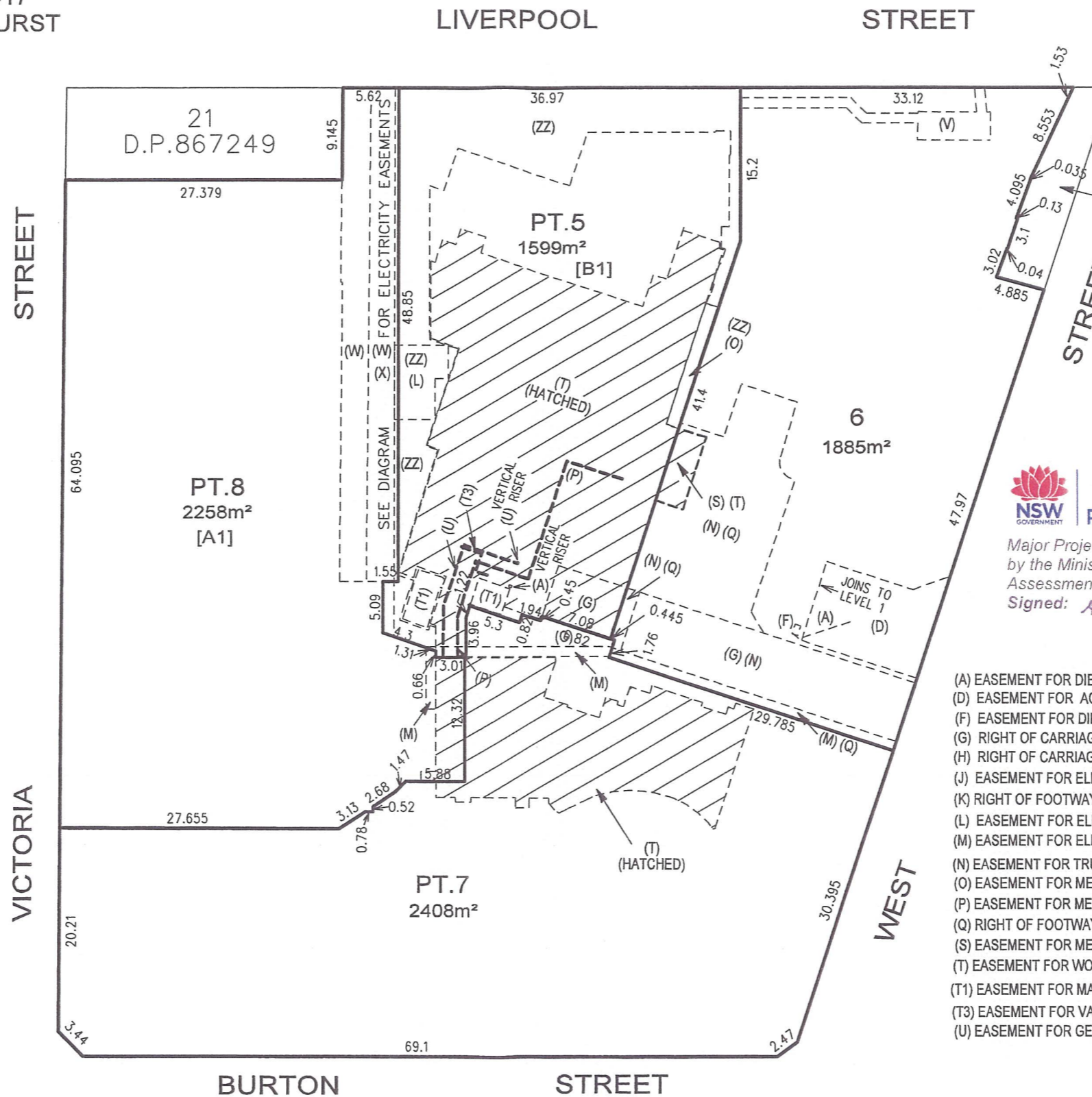
**LEVEL 3**



NOTE :  
 DIMENSIONS AND AREAS SHOWN HEREON  
 ARE SUBJECT TO SURVEY

EASEMENTS SHOWN ARE PROPOSED ONLY  
 AND MAY NOT REFLECT CURRENT  
 EASEMENTS REGISTERED ON TITLE

EACH LOT ABOVE LEVEL 3 IS AFFECTED BY RESTRICTION  
 ON USE OF LAND AS REGARDS FIRE SAFETY AND RELIEF  
 AIR DISCHARGE



No.520  
 Bk.3286

**STRATUM STATEMENTS**  
 [A1] PT.8 INCLUDES LEVEL 3  
 [B1] PT.5 INCLUDES LEVEL 3



Major Project Number: 09\_0011, approved on 12 January 2010  
 by the Minister, in accordance with the Environmental Planning &  
 Assessment Act 1979, subject to conditions of approval.  
 Signed: *A Carpenter*

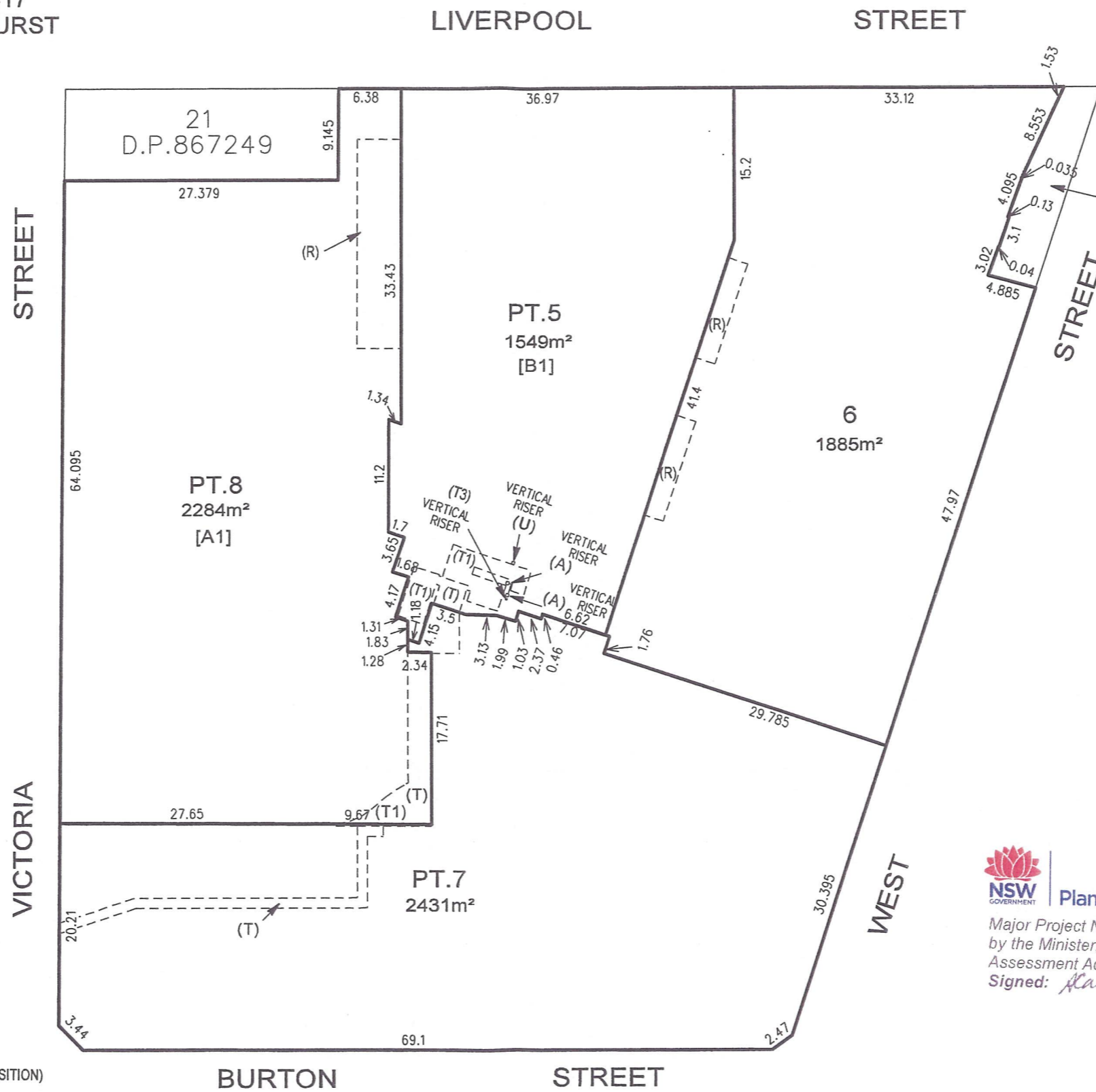
- (A) EASEMENT FOR DIESEL OVER EXISTING LINE OF PIPES (APPROX. POSITION)
- (D) EASEMENT FOR ACCESS (LIMITED IN STRATUM)
- (F) EASEMENT FOR DIESEL FILL & VENT (L.I.S.)
- (G) RIGHT OF CARRIAGEWAY 6.1 WIDE & VARIABLE WIDTH (L.I.S.) - [ENERGY AUSTRALIA]
- (H) RIGHT OF CARRIAGEWAY 4 WIDE (L.I.S.) - [ENERGY AUSTRALIA]
- (J) EASEMENT FOR ELECTRICITY & OTHER PURPOSES 0.6 WIDE & VARIABLE WIDTH (L.I.S.)
- (K) RIGHT OF FOOTWAY 2.75, 1.42 & 1.72 WIDE (L.I.S.) - [ENERGY AUSTRALIA]
- (L) EASEMENT FOR ELECTRICITY & OTHER PURPOSES (L.I.S.)
- (M) EASEMENT FOR ELECTRICITY & OTHER PURPOSES 1 WIDE (L.I.S.)
- (N) EASEMENT FOR TRUCK ACCESS (L.I.S.)
- (O) EASEMENT FOR MEDICAL GAS (L.I.S.)
- (P) EASEMENT FOR MEDICAL GAS OVER EXISTING LINE OF PIPES (APPROX. POSITION)
- (Q) RIGHT OF FOOTWAY 1 & 1.35 WIDE 7 VAR. WIDTH (L.I.S.)
- (S) EASEMENT FOR MEDICAL GAS STORAGE (L.I.S.)
- (T) EASEMENT FOR WORK ACCESS (L.I.S.)
- (T1) EASEMENT FOR MAINTENANCE ACCESS (L.I.S.)
- (T3) EASEMENT FOR VACUUM OVER EXISTING LINE OF PIPES (APPROX. POSITION)
- (U) EASEMENT FOR GENERATOR OVER EXISTING LINE OF CABLES (APPROX. POSITION)

- (V) EASEMENT TO DRAIN WATER 1 WIDE & 2.8 WIDE (L.I.S.)
- (W) RIGHT OF WAY (L.I.S.)
- (X) EASEMENT TO DRAIN WATER (L.I.S.)
- (ZZ) HARDSTAND & LANDSCAPE AREA EXTERNAL TO BUILDING

**RYGATE & COMPANY PTY LIMITED**  
**SURVEYORS**  
 LEVEL 3, 81 YORK STREET, SYDNEY 2000  
 PHONE 9262 6800 FAX 9262 6843  
 ABN 61 001 204897

**PLAN**  
**OF PROPOSED SUBDIVISION OF LOTS 28 & 29**  
**D.P.881417 & LOT 10 D.P.846558 AND**  
**CONSOLIDATION OF LOT 22 D.P.867249**  
**& LOTS 24-27 INCL. D.P.881417**  
**VICTORIA STREET, DARLINGHURST**  
**CITY OF SYDNEY**

1:500  
**LEVEL 4**



No.520  
 Bk.3286

**STRATUM STATEMENTS**  
 [A1] PT.8 INCLUDES LEVEL 4  
 [B1] PT.5 INCLUDES LEVEL 4

NOTE :  
 DIMENSIONS AND AREAS SHOWN HEREON  
 ARE SUBJECT TO SURVEY

EASEMENTS SHOWN ARE PROPOSED ONLY  
 AND MAY NOT REFLECT CURRENT  
 EASEMENTS REGISTERED ON TITLE



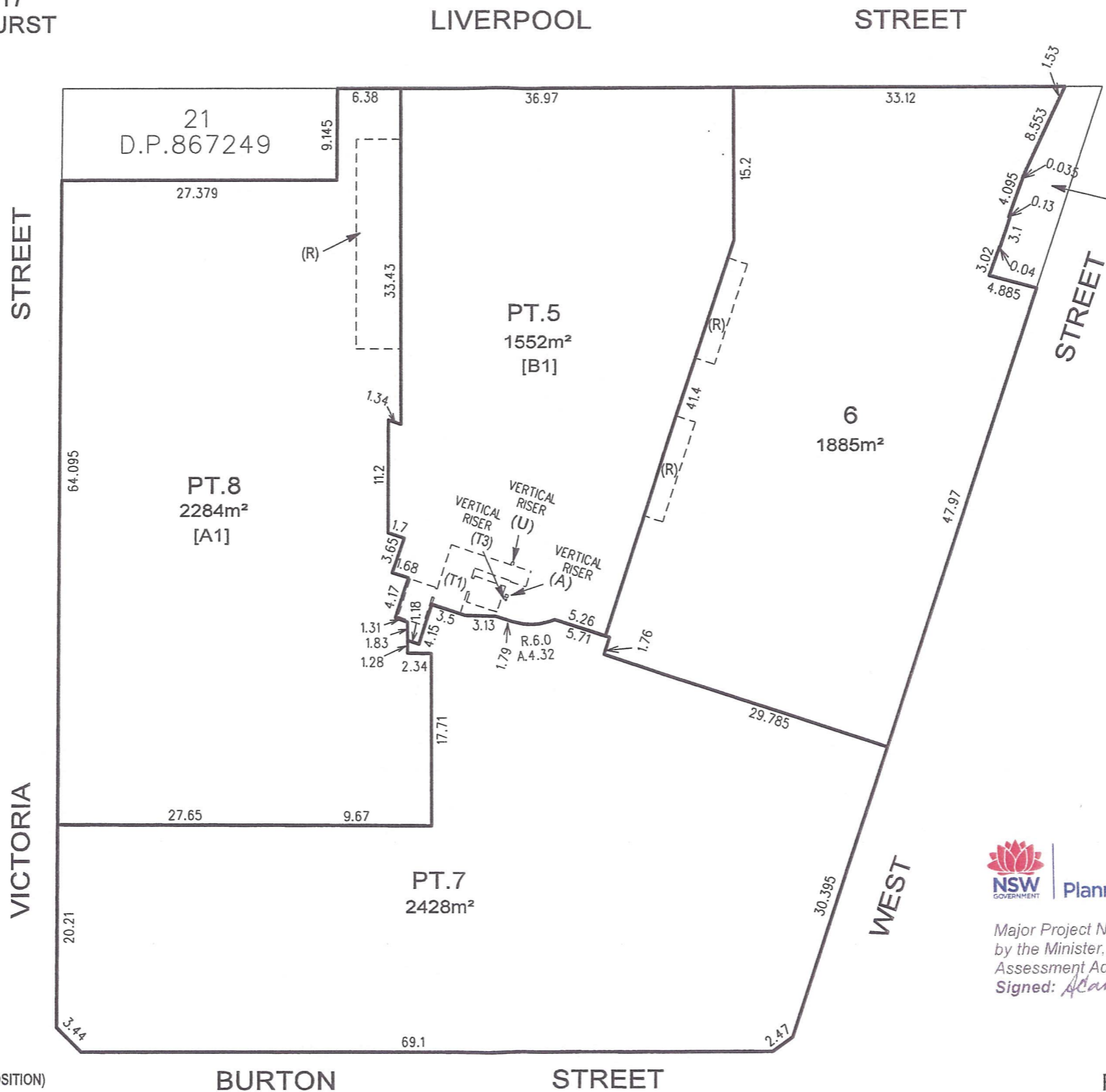
Major Project Number: 09\_0011, approved on 12 January 2010  
 by the Minister, in accordance with the Environmental Planning &  
 Assessment Act 1979, subject to conditions of approval.  
 Signed: *[Signature]*

- (A) EASEMENT FOR DIESEL OVER EXISTING LINE OF PIPES (APPROX. POSITION)
- (R) EASEMENT FOR SUNSHADE (L.I.S.)
- (T) EASEMENT FOR WORK ACCESS & FIRE EGRESS (L.I.S.)
- (T1) EASEMENT FOR MAINTENANCE ACCESS (L.I.S.) - [GOODS LIFT/STAIRS/LOBBY]
- (T3) EASEMENT FOR VACUUM OVER EXISTING LINE OF PIPES (APPROX. POSITION)
- (U) EASEMENT FOR ELECTRICITY GENERATOR OVER EXISTING LINE OF CABLES (APPROX. POSITION)

**RYGATE & COMPANY PTY LIMITED**  
**SURVEYORS**  
 LEVEL 3, 81 YORK STREET, SYDNEY 2000  
 PHONE 9262 6800 FAX 9262 6843  
 ABN 61 001 204897

**PLAN**  
**OF PROPOSED SUBDIVISION OF LOTS 28 & 29**  
**D.P.881417 & LOT 10 D.P.846558 AND**  
**CONSOLIDATION OF LOT 22 D.P.867249**  
**& LOTS 24-27 INCL. D.P.881417**  
**VICTORIA STREET, DARLINGHURST**  
**CITY OF SYDNEY**

1:500  
**LEVEL 5**



No.520  
 Bk.3286

**STRATUM STATEMENTS**  
 [A1] PT.8 INCLUDES LEVEL 5  
 [B1] PT.5 INCLUDES LEVEL 5

NOTE :  
 DIMENSIONS AND AREAS SHOWN HEREON  
 ARE SUBJECT TO SURVEY  
 EASEMENTS SHOWN ARE PROPOSED ONLY  
 AND MAY NOT REFLECT CURRENT  
 EASEMENTS REGISTERED ON TITLE

- (A) EASEMENT FOR DIESEL OVER EXISTING LINE OF PIPES (APPROX. POSITION)
- (R) EASEMENT FOR SUNSHADE (L.I.S.)
- (T1) EASEMENT FOR MAINTENANCE ACCESS (L.I.S.) - [GOODS LIFT/ STAIRS/LOBBY]
- (T3) EASEMENT FOR VACUUM OVER EXISTING LINE OF PIPES (APPROX. POSITION)
- (U) EASEMENT FOR ELECTRICITY GENERATOR OVER EXISTING LINE OF CABLES (APPROX. POSITION)

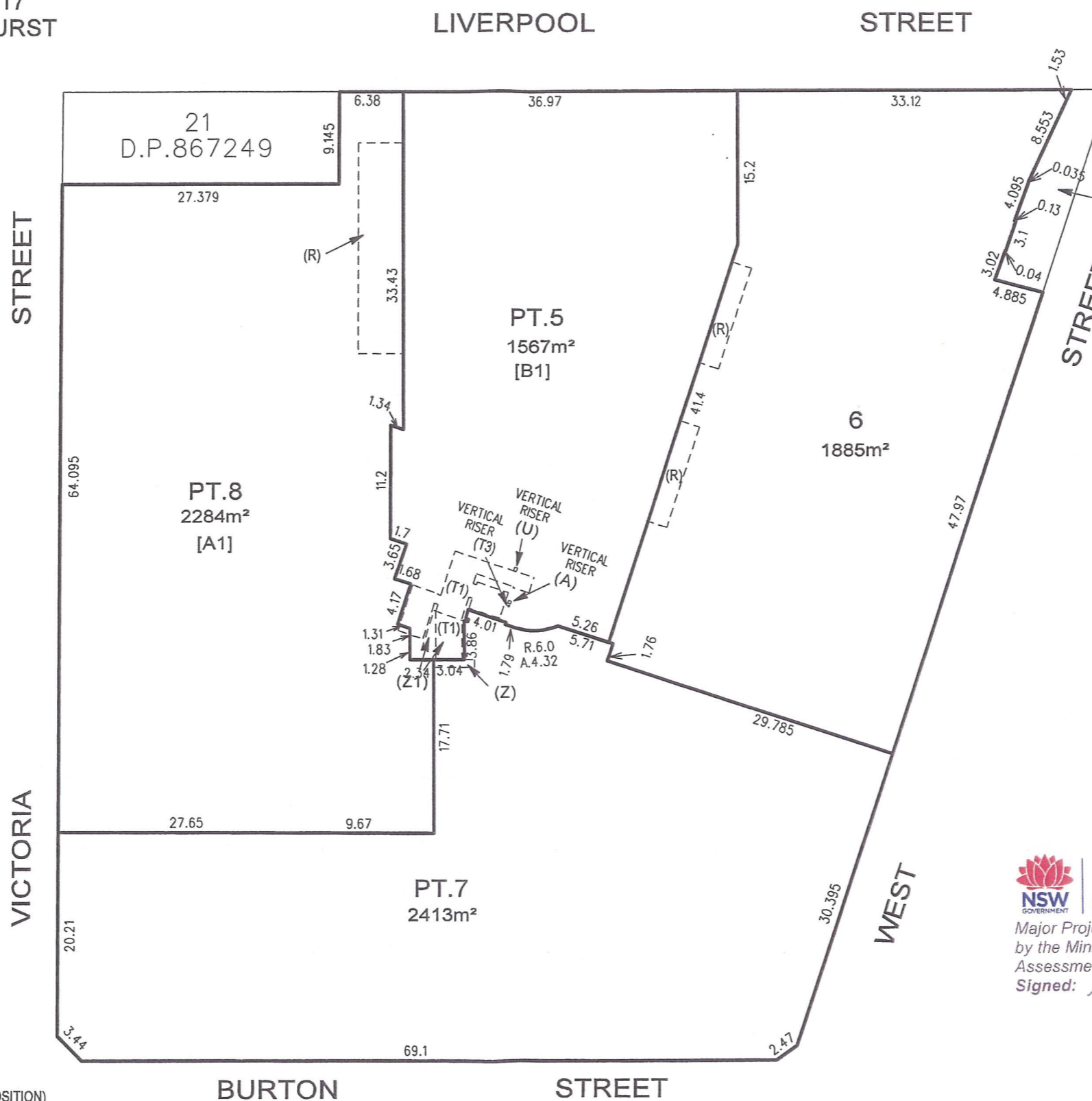


Major Project Number: 09\_0011, approved on 12 January 2010  
 by the Minister, in accordance with the Environmental Planning &  
 Assessment Act 1979, subject to conditions of approval.  
 Signed: *A. Carpenter*

**RYGATE & COMPANY PTY LIMITED**  
**SURVEYORS**  
 LEVEL 3, 81 YORK STREET, SYDNEY 2000  
 PHONE 9262 6800 FAX 9262 6843  
 ABN 61 001 204897

**PLAN**  
**OF PROPOSED SUBDIVISION OF LOTS 28 & 29**  
**D.P.881417 & LOT 10 D.P.846558 AND**  
**CONSOLIDATION OF LOT 22 D.P.867249**  
**& LOTS 24-27 INCL. D.P.881417**  
**VICTORIA STREET, DARLINGHURST**  
**CITY OF SYDNEY**

1:500  
**LEVEL 6**



No.520  
 Bk.3286

**STRATUM STATEMENTS**  
 [A1] PT.8 INCLUDES LEVEL 6  
 [B1] PT.5 INCLUDES LEVEL 6

NOTE :  
 DIMENSIONS AND AREAS SHOWN HEREON  
 ARE SUBJECT TO SURVEY  
 EASEMENTS SHOWN ARE PROPOSED ONLY  
 AND MAY NOT REFLECT CURRENT  
 EASEMENTS REGISTERED ON TITLE

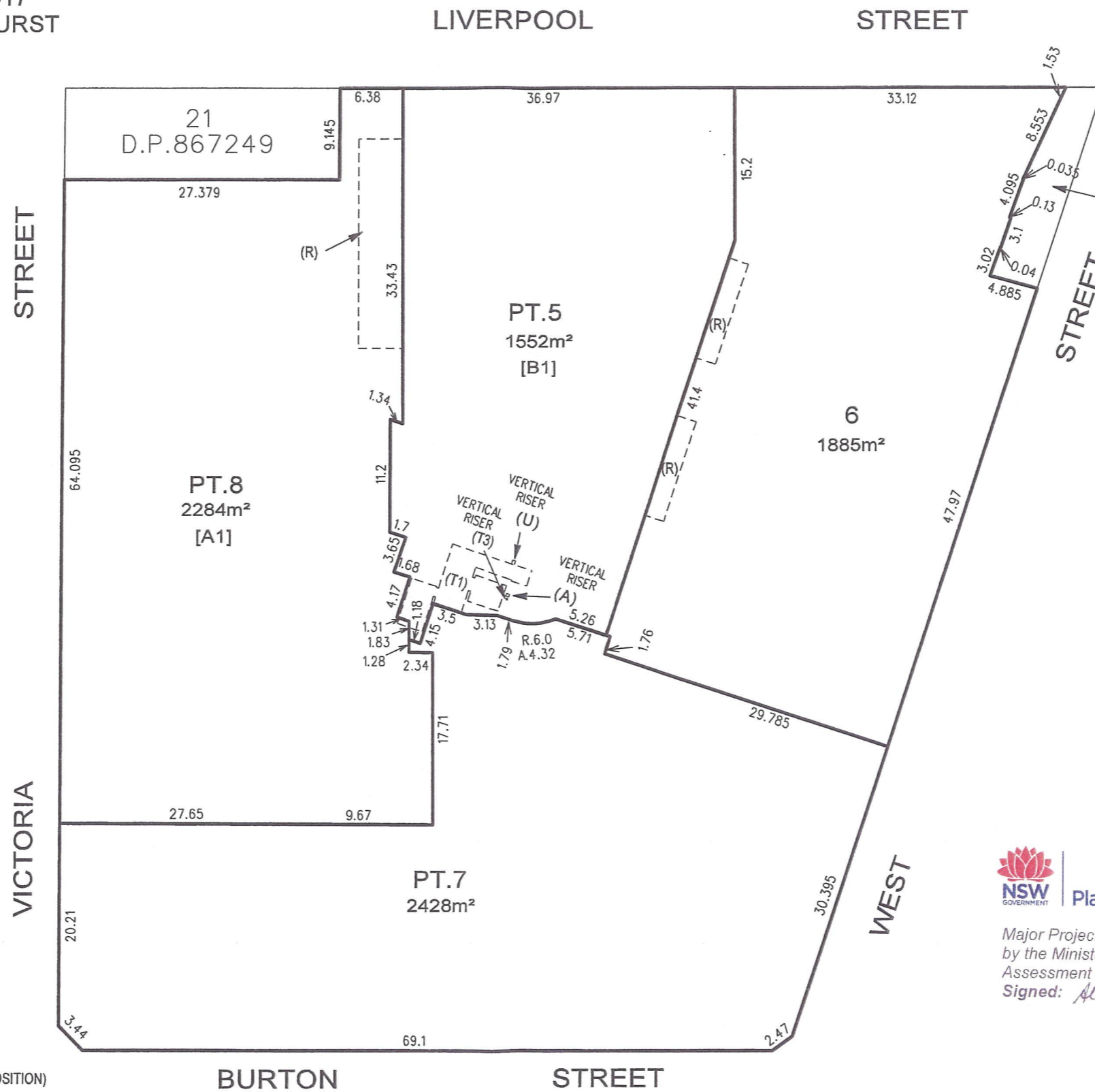
**NSW** Planning  
 Major Project Number: 09\_0011, approved on 12 January 2010  
 by the Minister, in accordance with the Environmental Planning &  
 Assessment Act 1979, subject to conditions of approval.  
 Signed: *K. Carpenter*

- (A) EASEMENT FOR DIESEL OVER EXISTING LINE OF PIPES (APPROX. POSITION)
- (R) EASEMENT FOR SUNSHADE (L.I.S.)
- (T1) EASEMENT FOR MAINTENANCE ACCESS (L.I.S.) - [GOODS LIFT/STAIRS/LOBBY]
- (T3) EASEMENT FOR VACUUM OVER EXISTING LINE OF PIPES (APPROX. POSITION)
- (U) EASEMENT FOR ELECTRICITY GENERATOR OVER EXISTING LINE OF CABLES (APPROX. POSITION)
- (Z) EASEMENT FOR SUPPORT FOR OVERBRIDGE (L.I.S.)

**RYGATE & COMPANY PTY LIMITED**  
**SURVEYORS**  
 LEVEL 3, 81 YORK STREET, SYDNEY 2000  
 PHONE 9262 6800 FAX 9262 6843  
 ABN 61 001 204897

**PLAN**  
**OF PROPOSED SUBDIVISION OF LOTS 28 & 29**  
**D.P.881417 & LOT 10 D.P.846558 AND**  
**CONSOLIDATION OF LOT 22 D.P.867249**  
**& LOTS 24-27 INCL. D.P.881417**  
**VICTORIA STREET, DARLINGHURST**  
**CITY OF SYDNEY**

1:500  
**LEVEL 7**



No.520  
 Bk.3286

**STRATUM STATEMENTS**  
 [A1] PT.8 INCLUDES LEVEL 7  
 [B1] PT.5 INCLUDES LEVEL 7

NOTE :  
 DIMENSIONS AND AREAS SHOWN HEREON  
 ARE SUBJECT TO SURVEY

EASEMENTS SHOWN ARE PROPOSED ONLY  
 AND MAY NOT REFLECT CURRENT  
 EASEMENTS REGISTERED ON TITLE

- (A) EASEMENT FOR DIESEL OVER EXISTING LINE OF PIPES (APPROX. POSITION)
- (R) EASEMENT FOR SUNSHADE (L.I.S.)
- (T1) EASEMENT FOR MAINTENANCE ACCESS (L.I.S.) - [GOODS LIFT/ STAIRS/LOBBY]
- (T3) EASEMENT FOR VACUUM OVER EXISTING LINE OF PIPES (APPROX. POSITION)
- (U) EASEMENT FOR ELECTRICITY GENERATOR OVER EXISTING LINE OF CABLES (APPROX. POSITION)

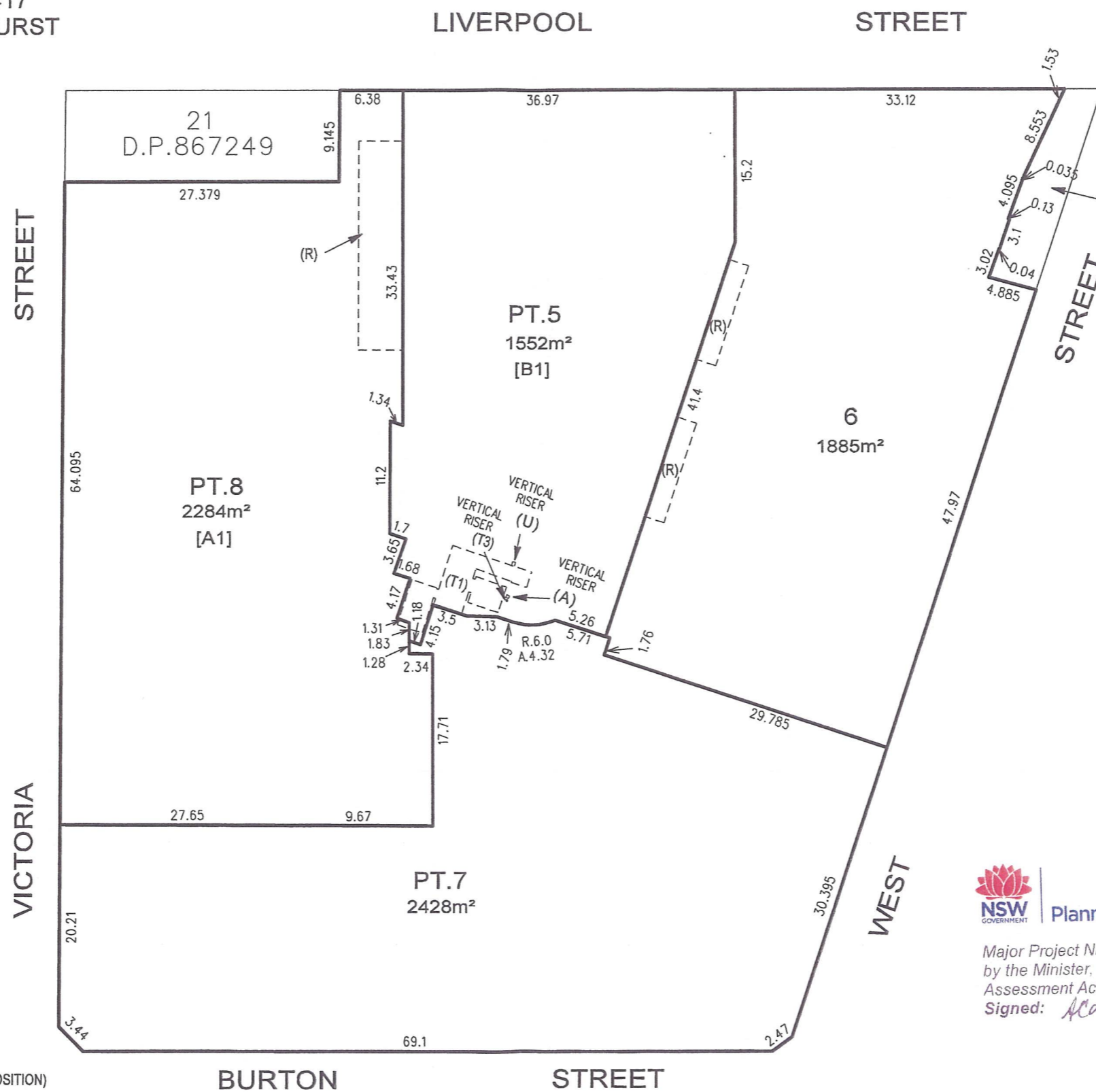


Major Project Number: 09\_0011, approved on 12 January 2010  
 by the Minister, in accordance with the Environmental Planning &  
 Assessment Act 1979, subject to conditions of approval.  
 Signed: *Alampender*

**RYGATE & COMPANY PTY LIMITED**  
**SURVEYORS**  
 LEVEL 3, 81 YORK STREET, SYDNEY 2000  
 PHONE 9262 6800 FAX 9262 6843  
 ABN 61 001 204897

**PLAN**  
**OF PROPOSED SUBDIVISION OF LOTS 28 & 29**  
**D.P.881417 & LOT 10 D.P.846558 AND**  
**CONSOLIDATION OF LOT 22 D.P.867249**  
**& LOTS 24-27 INCL. D.P.881417**  
**VICTORIA STREET, DARLINGHURST**  
**CITY OF SYDNEY**

1:500  
**LEVEL 8**



No.520  
 Bk.3286

**STRATUM STATEMENTS**  
 [A1] PT.8 INCLUDES LEVEL 8  
 [B1] PT.5 INCLUDES LEVEL 8

NOTE :  
 DIMENSIONS AND AREAS SHOWN HEREON  
 ARE SUBJECT TO SURVEY  
 EASEMENTS SHOWN ARE PROPOSED ONLY  
 AND MAY NOT REFLECT CURRENT  
 EASEMENTS REGISTERED ON TITLE

- (A) EASEMENT FOR DIESEL OVER EXISTING LINE OF PIPES (APPROX. POSITION)
- (R) EASEMENT FOR SUNSHADE (L.I.S.)
- (T1) EASEMENT FOR MAINTENANCE ACCESS (L.I.S.) - [GOODS LIFT/ STAIRS/LOBBY]
- (T3) EASEMENT FOR VACUUM OVER EXISTING LINE OF PIPES (APPROX. POSITION)
- (U) EASEMENT FOR ELECTRICITY GENERATOR OVER EXISTING LINE OF CABLES (APPROX. POSITION)

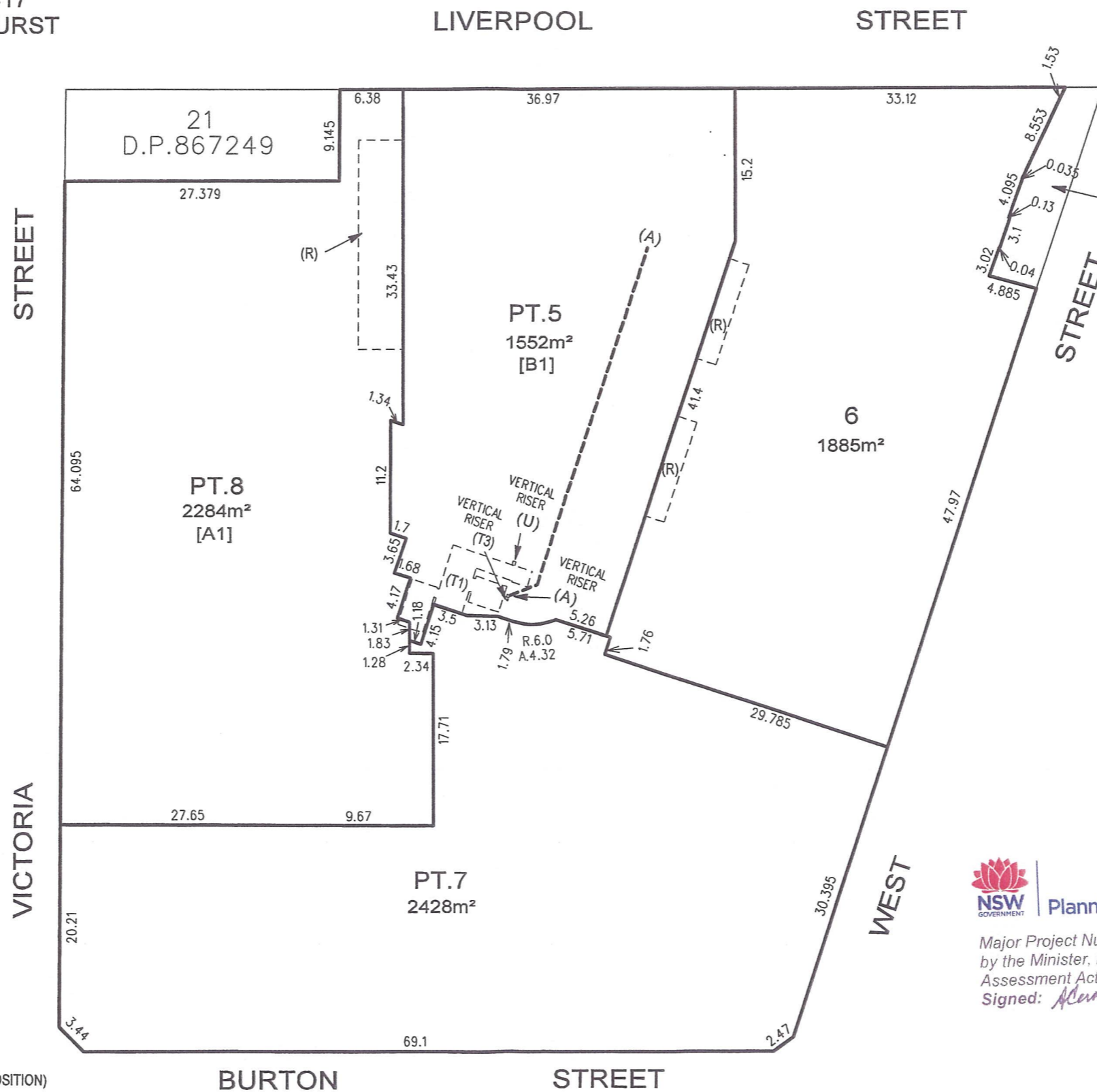


Major Project Number: 09\_0011, approved on 12 January 2010  
 by the Minister, in accordance with the Environmental Planning &  
 Assessment Act 1979, subject to conditions of approval.  
 Signed: *ACarpenter*

**RYGATE & COMPANY PTY LIMITED**  
**SURVEYORS**  
 LEVEL 3, 81 YORK STREET, SYDNEY 2000  
 PHONE 9262 6800 FAX 9262 6843  
 ABN 61 001 204897

**PLAN**  
**OF PROPOSED SUBDIVISION OF LOTS 28 & 29**  
**D.P.881417 & LOT 10 D.P.846558 AND**  
**CONSOLIDATION OF LOT 22 D.P.867249**  
**& LOTS 24-27 INCL. D.P.881417**  
**VICTORIA STREET, DARLINGHURST**  
**CITY OF SYDNEY**

1:500  
**LEVEL 9**



No.520  
 Bk.3286

**STRATUM STATEMENTS**  
 [A1] PT.8 INCLUDES LEVEL 9  
 [B1] PT.5 INCLUDES LEVEL 9

NOTE :  
 DIMENSIONS AND AREAS SHOWN HEREON  
 ARE SUBJECT TO SURVEY

EASEMENTS SHOWN ARE PROPOSED ONLY  
 AND MAY NOT REFLECT CURRENT  
 EASEMENTS REGISTERED ON TITLE

- (A) EASEMENT FOR DIESEL OVER EXISTING LINE OF PIPES (APPROX. POSITION)
- (R) EASEMENT FOR SUNSHADE (L.I.S.)
- (T1) EASEMENT FOR MAINTENANCE ACCESS (L.I.S.) - [GOODS LIFT/ STAIRS/LOBBY]
- (T3) EASEMENT FOR VACUUM OVER EXISTING LINE OF PIPES (APPROX. POSITION)
- (U) EASEMENT FOR ELECTRICITY GENERATOR OVER EXISTING LINE OF CABLES (APPROX. POSITION)

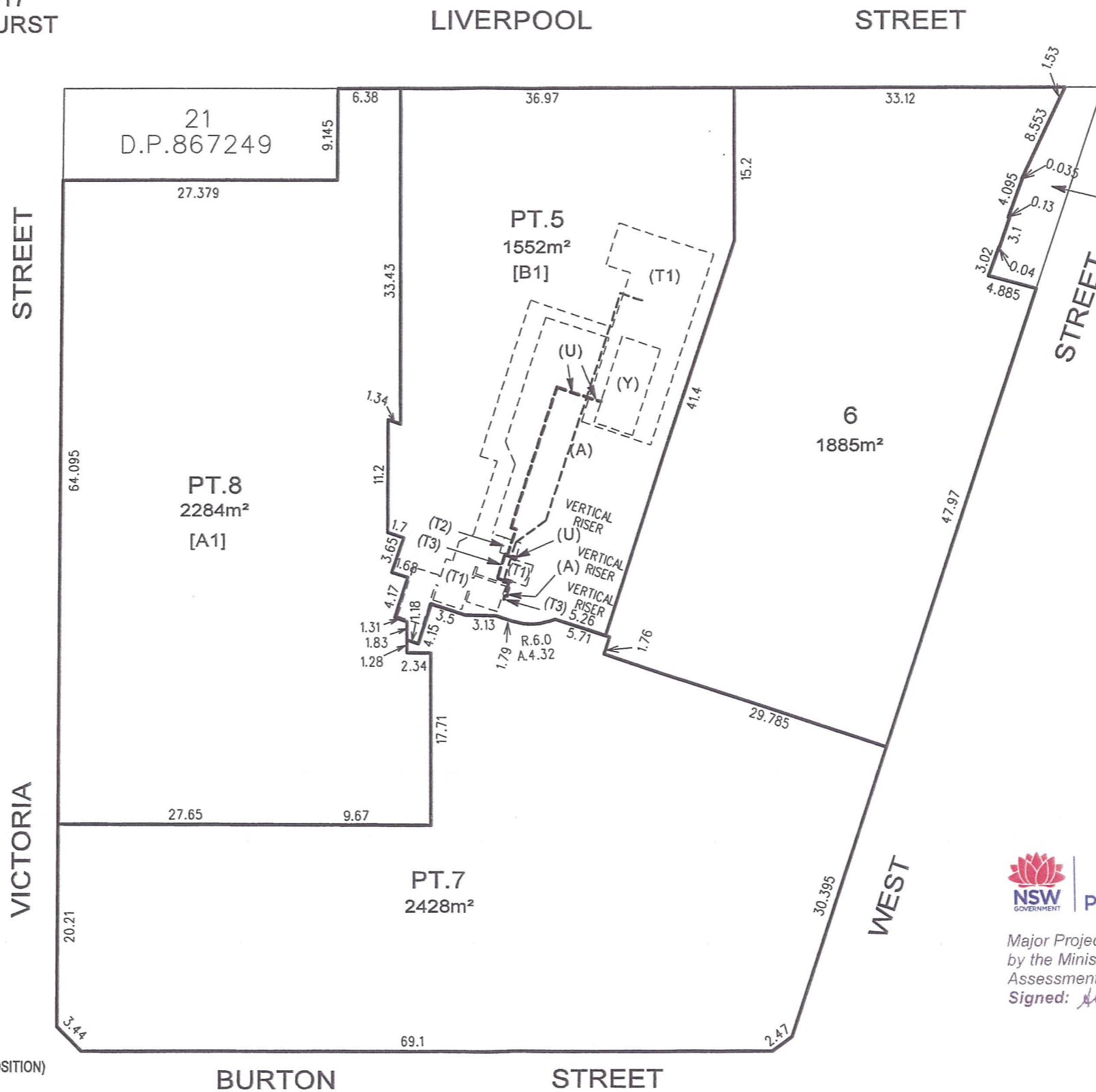


Major Project Number: 09\_0011, approved on 12 January 2010  
 by the Minister, in accordance with the Environmental Planning &  
 Assessment Act 1979, subject to conditions of approval.  
 Signed: *A. Carpenter*

**RYGATE & COMPANY PTY LIMITED**  
**SURVEYORS**  
 LEVEL 3, 81 YORK STREET, SYDNEY 2000  
 PHONE 9262 6800 FAX 9262 6843  
 ABN 61 001 204897

**PLAN**  
**OF PROPOSED SUBDIVISION OF LOTS 28 & 29**  
**D.P.881417 & LOT 10 D.P.846558 AND**  
**CONSOLIDATION OF LOT 22 D.P.867249**  
**& LOTS 24-27 INCL. D.P.881417**  
**VICTORIA STREET, DARLINGHURST**  
**CITY OF SYDNEY**

1:500  
**LEVEL 10**



No.520  
 Bk.3286

**STRATUM STATEMENTS**  
 [A1] PT.8 INCLUDES LEVELS 10 TO 15  
 [B1] PT.5 INCLUDES LEVEL 10

NOTE :  
 DIMENSIONS AND AREAS SHOWN HEREON  
 ARE SUBJECT TO SURVEY

EASEMENTS SHOWN ARE PROPOSED ONLY  
 AND MAY NOT REFLECT CURRENT  
 EASEMENTS REGISTERED ON TITLE

- (A) EASEMENT FOR DIESEL OVER EXISTING LINE OF PIPES (APPROX. POSITION)
- (T1) EASEMENT FOR MAINTENANCE ACCESS (L.I.S.)
- (T2) EASEMENT FOR VACUUM PLANT (L.I.S.)
- (T3) EASEMENT FOR VACUUM OVER EXISTING LINE OF PIPES (APPROX. POSITION)
- (Y) EASEMENT FOR ELECTRICITY GENERATOR (L.I.S.)
- (U) EASEMENT FOR ELECTRICITY GENERATOR OVER EXISTING LINE OF CABLES (APPROX. POSITION)



Major Project Number: 09\_0011, approved on 12 January 2010  
 by the Minister, in accordance with the Environmental Planning &  
 Assessment Act 1979, subject to conditions of approval.

Signed: *Glaspender*

**RYGATE & COMPANY PTY LIMITED**  
**SURVEYORS**  
 LEVEL 3, 81 YORK STREET, SYDNEY 2000  
 PHONE 9262 6800 FAX 9262 6843  
 ABN 61 001 204897