

**INTELLECTUAL PROPERTY**

© COPYRIGHT BVM ARCHITECTURE PTY LIMITED. UNLESS OTHERWISE ADVISED IN WRITING, ALL RIGHTS TO USE THIS DOCUMENT ARE RESERVED TO BVM ARCHITECTURE PTY LIMITED. THIS DOCUMENT MAY ONLY BE USED FOR THE EXPRESS PURPOSE AND PROJECT FOR WHICH IT HAS BEEN CREATED AND IS NOT TO BE REPRODUCED, COPIED, OR TRANSMITTED IN ANY FORM OR BY ANY MEANS, ELECTRONIC OR MECHANICAL, INCLUDING PHOTOCOPYING, RECORDING, OR BY ANY INFORMATION STORAGE AND RETRIEVAL SYSTEM. ANY UNAUTHORIZED USE OF THIS DOCUMENT IS AT THE USER'S SOLE RISK AND WITHOUT LIMITING BVM'S RIGHTS THE USER RELEASES AND INDEMNIFIES BVM FROM AND AGAINST ALL LOSS OR DAMAGE.

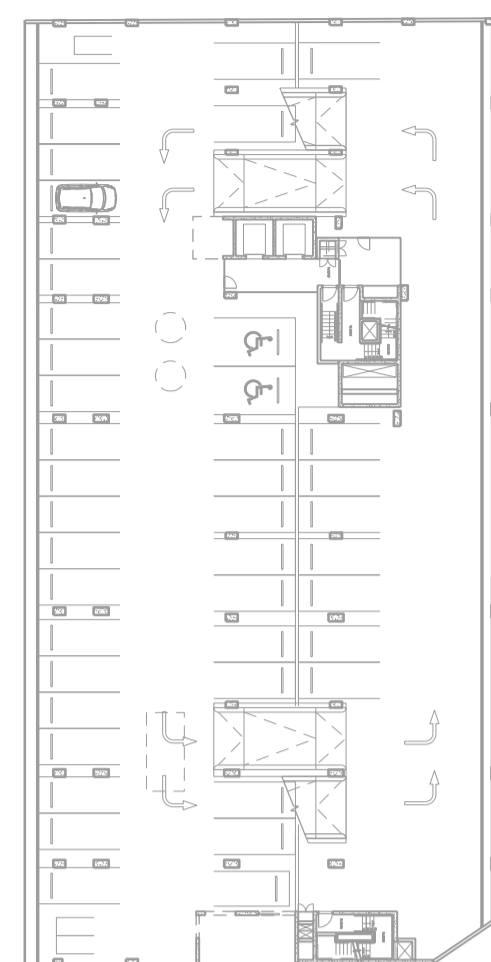
ISSUE	DATE	FOR
A	24.04.09	FOR APPROVAL
B	04.06.09	FOR PLANNING APPLICATION
C	23.09.09	FOR INFORMATION
D	29.09.09	DxP FOR APPROVAL
E	06.10.09	DxP FOR APPROVAL

**GROSS FLOOR AREA**

THE SUM OF THE AREAS OF EACH FLOOR OF A BUILDING WHERE THE AREA OF EACH FLOOR IS TAKEN TO BE THE AREA WITHIN THE OUTER FACE OF THE EXTERNAL ENCLOSING WALLS AS MEASURED AT A HEIGHT OF 1.4 METRES ABOVE EACH FLOOR EXCLUDING:

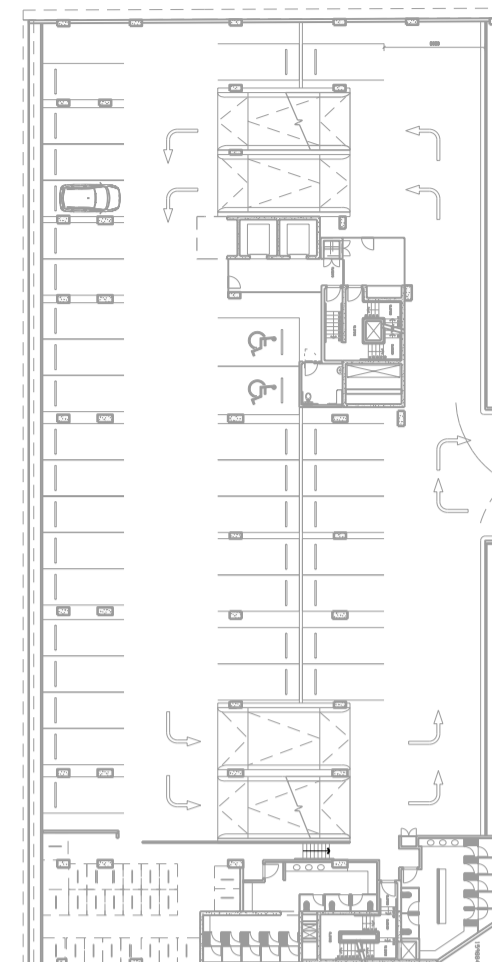
1. COLUMNS, FIN WALLS, SUN CONTROL DEVICES AND ANY ELEMENTS, PROJECTIONS OR WORKS OUTSIDE THE GENERAL LINES OF THE OUTER FACE OF EXTERNAL WALLS
2. LIFT TOWERS, COOLING TOWERS, MACHINERY AND PLANT ROOMS AND ANCILLARY STORAGE SPACE AND VERTICAL AIR CONDITIONING DUCTS.
3. CAR-PARKING AND ASSOCIATED ACCESS NEEDED TO MEET THE REQUIREMENTS OF THE COUNCIL
4. SPACE FOR THE LOADING AND UNLOADING OF GOODS

GROSS FLOOR AREA



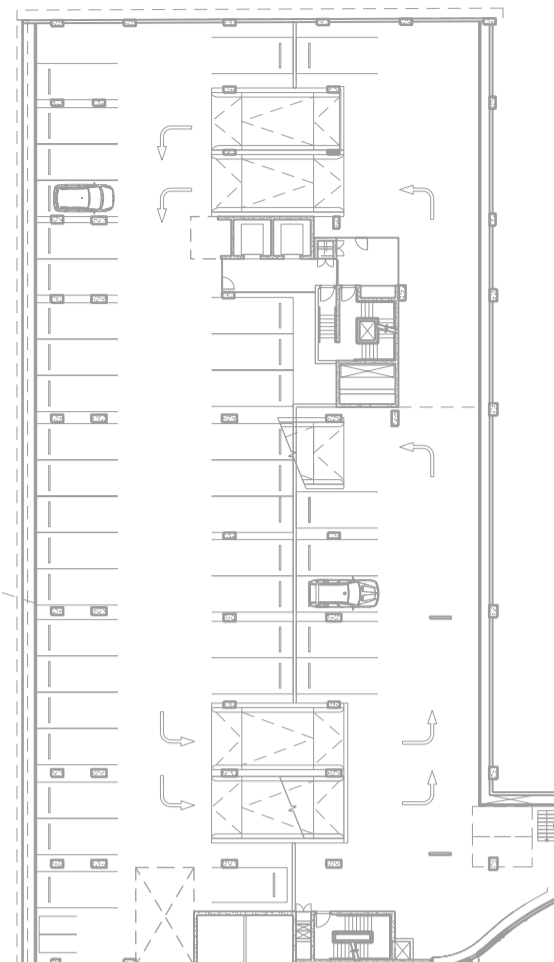
LEVEL B2 GFA EXCLUDED

- EXCLUDES:
1. REQUIRED CARPARKING
  2. REQUIRED CARPARKING INTERNAL ACCESS



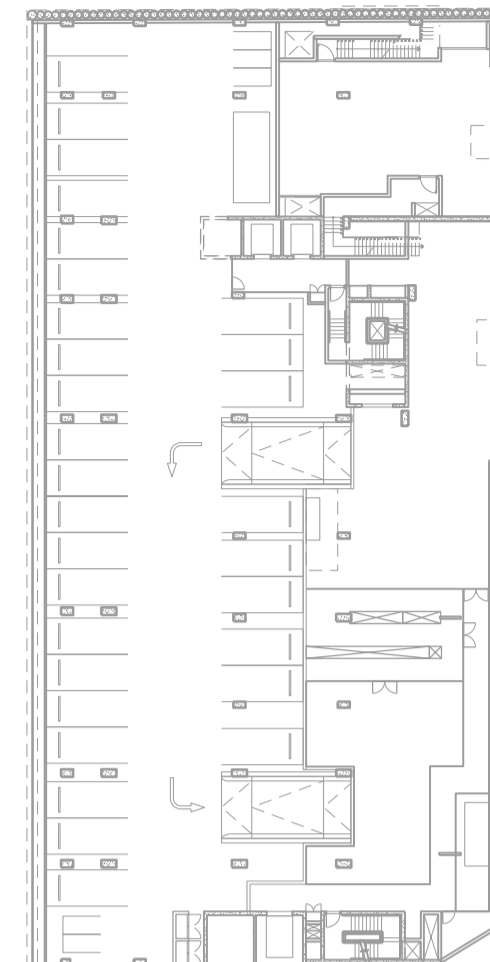
LEVEL B1 GFA EXCLUDED

- EXCLUDES:
1. REQUIRED CARPARKING
  2. REQUIRED CARPARKING INTERNAL ACCESS



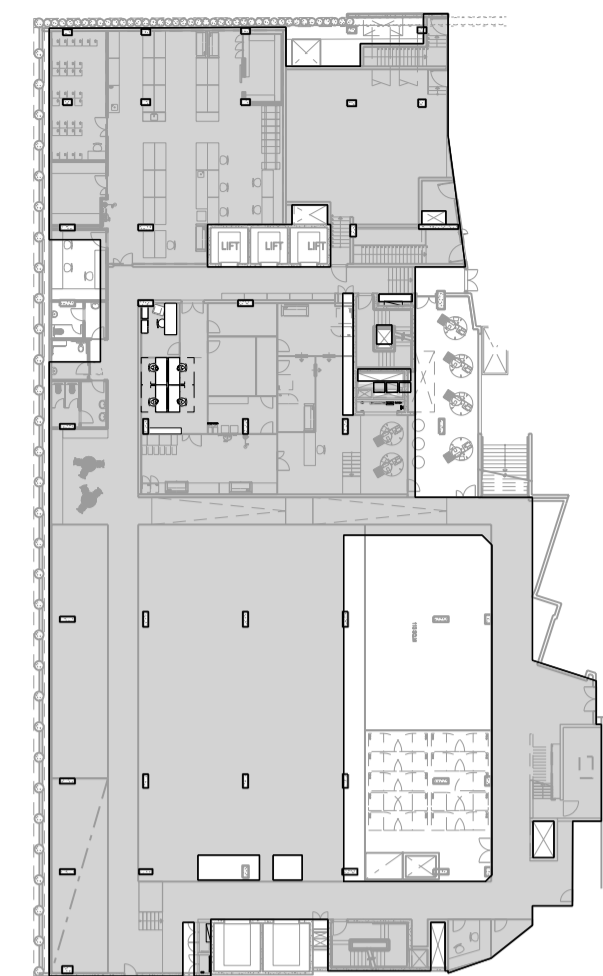
LEVEL 01 GFA EXCLUDED

- EXCLUDES:
1. REQUIRED CARPARKING
  2. REQUIRED CARPARKING INTERNAL ACCESS



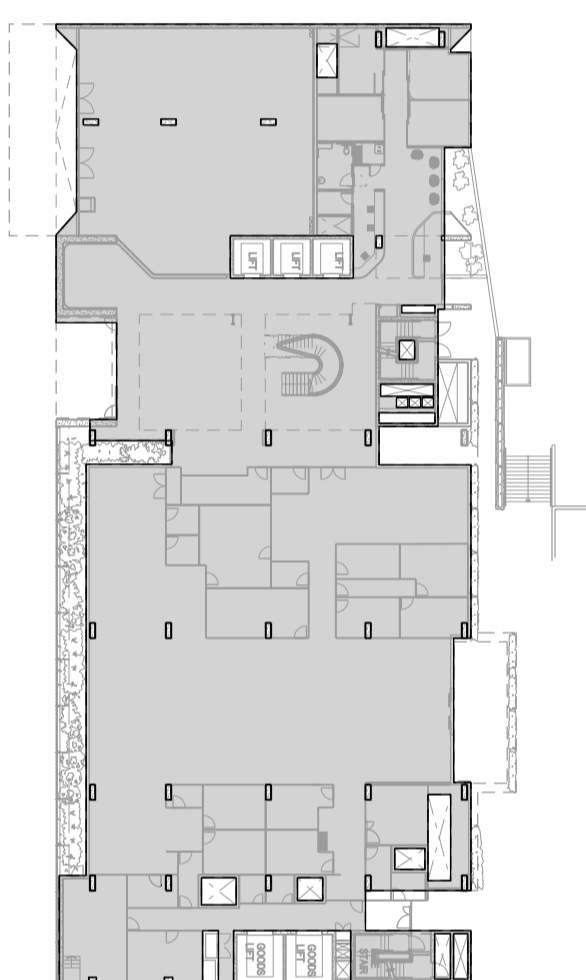
LEVEL 02 GFA EXCLUDED

- EXCLUDES:
1. REQUIRED CARPARKING
  2. REQUIRED CARPARKING INTERNAL ACCESS
  3. SUBSTATION + CHILLER PLANT ROOM



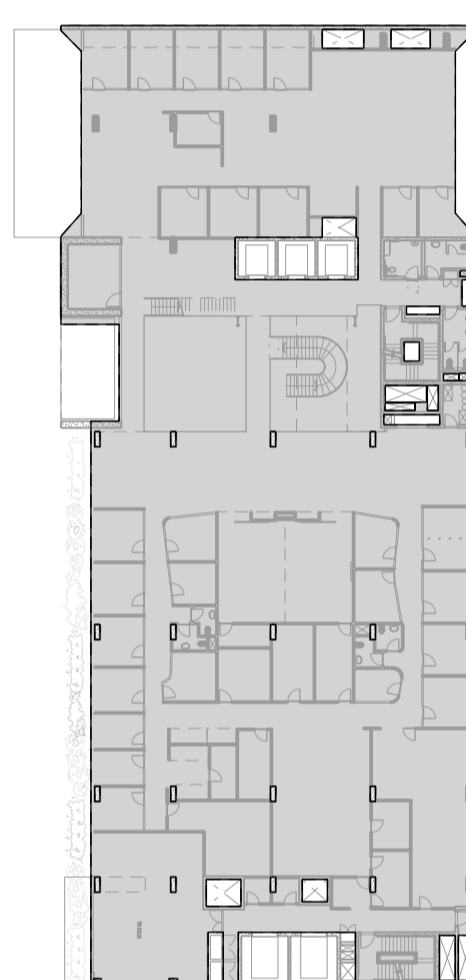
LEVEL 03 GFA APPROX. 1487 M2

- EXCLUDES:
1. LIFTS, RISERS
  2. MECHANICAL PLANT, SWITCHROOM, CHILLER PLANT MDR ROOM, HOIST, COMINGLED WASTE, CATERING COLD STORAGE CRYO STORE, FREEZER ROOM, BULK STORAGE, BLOCK AND SLIDE STORE
  - 3.



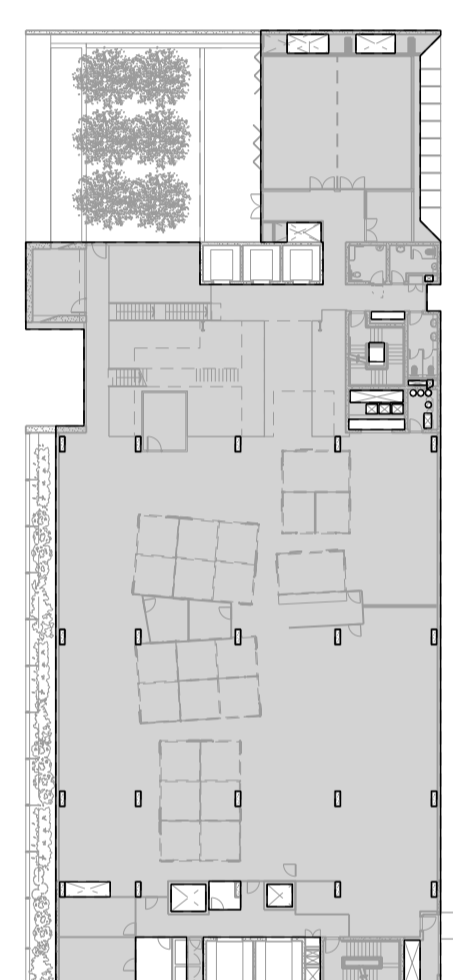
LEVEL 04 GFA APPROX. 1445 M2

- EXCLUDES:
1. LIFTS, RISERS
  2. FIRE SERVICES, EDB, F.C.R, COMMS



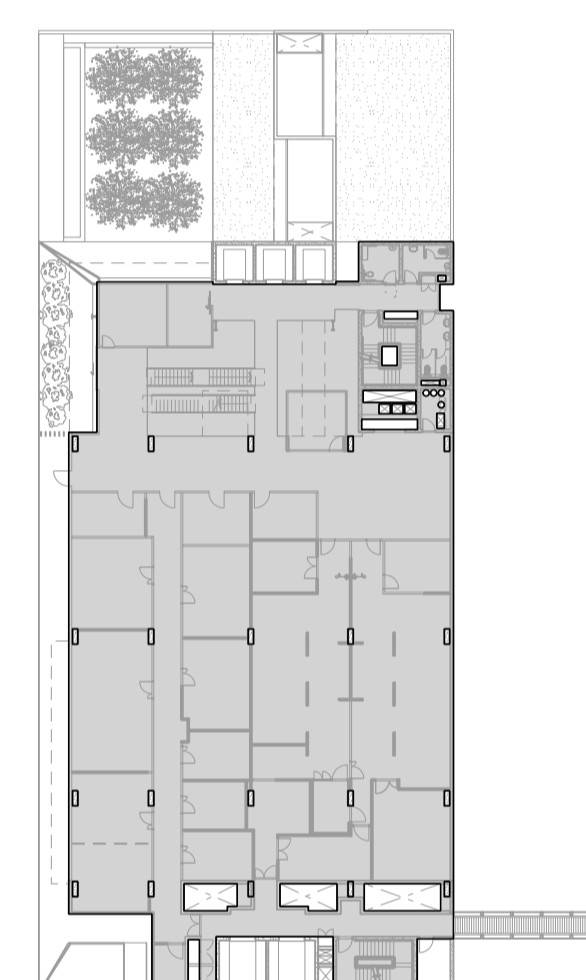
LEVEL 05 GFA APPROX. 1515 M2

- EXCLUDES:
1. LIFTS, RISERS
  2. COMMS, EDB



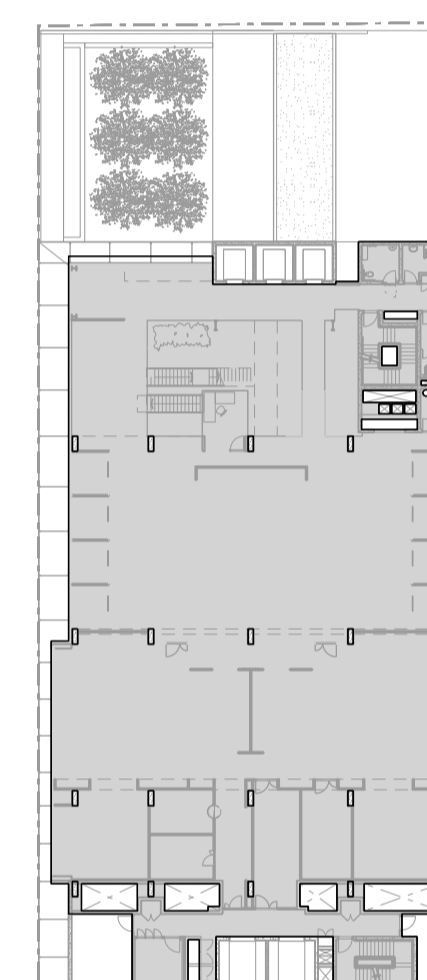
LEVEL 06 GFA APPROX. 1300 M2

- EXCLUDES:
1. LIFTS, RISERS
  2. COMMS, EDB



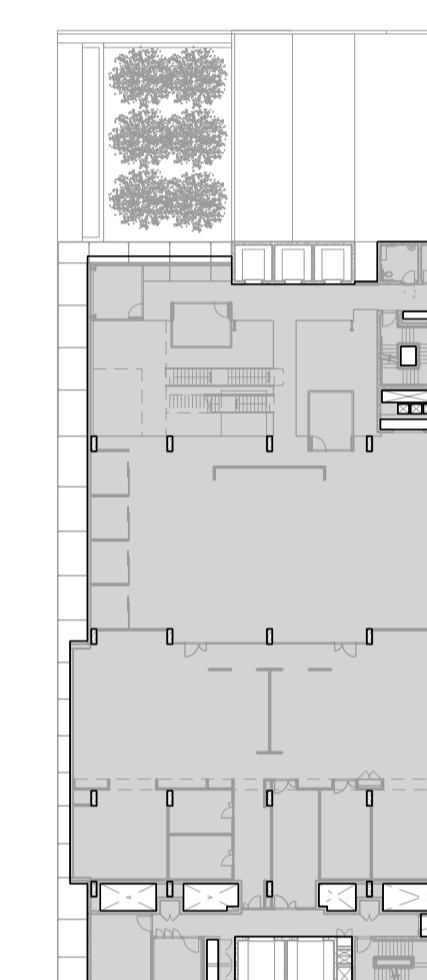
LEVEL 07 GFA APPROX. 1082 M2

- EXCLUDES:
1. LIFTS, RISERS
  2. COMMS, EDB



LEVEL 08 GFA APPROX. 1127 M2

- EXCLUDES:
1. LIFTS, RISERS
  2. COMMS, EDB
  3. STORE



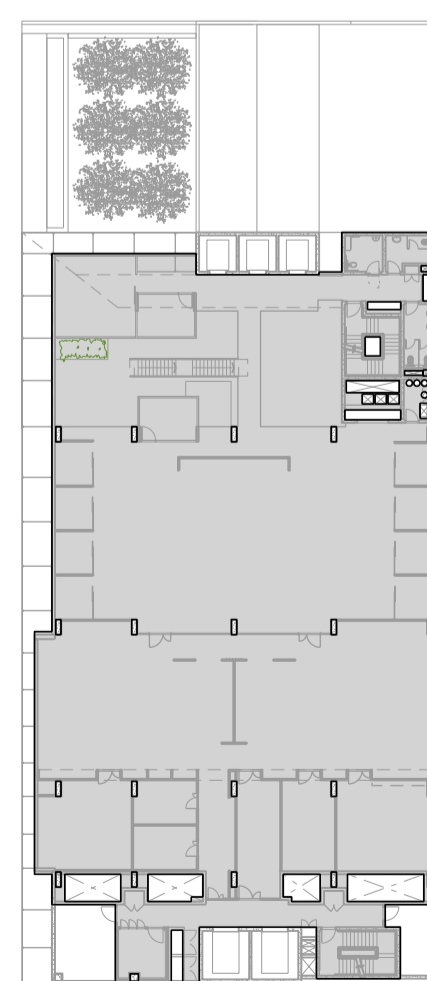
LEVEL 09 GFA APPROX. 1148 M2

- EXCLUDES:
1. LIFTS, RISERS
  2. COMMS, EDB
  3. STORE



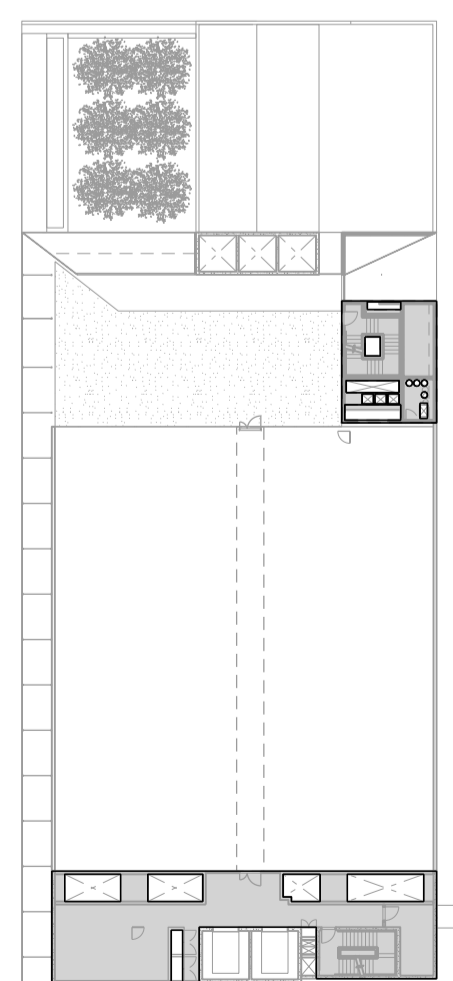
LEVEL 10 GFA APPROX. 1127 M2

- EXCLUDES:
1. LIFTS, RISERS
  2. COMMS, EDB
  3. STORE



LEVEL 11 GFA APPROX. 1127 M2

- EXCLUDES:
1. LIFTS, RISERS
  2. COMMS, EDB
  3. STORE



LEVEL 12 GFA APPROX. 128 M2

- EXCLUDES:
1. LIFTS, RISERS
  2. PLANT, COMMS, EDB



CLIENT

GARVAN INSTITUTE  
AND ST VINCENTS &  
MATER HEALTH SYDNEY

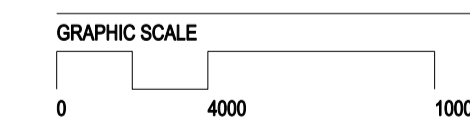
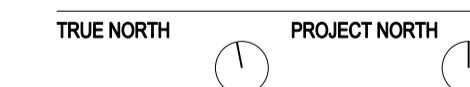
PROJECT

GARVAN & ST VINCENTS  
CANCER CENTRE

BVM PROJECT NUMBER

s0901009

DRAWING KEY



SCALE

1:400 at A3

1:200 at A1

STATUS

DRAWING

**GFA AREA CALCULATION**

DRAWING NUMBER

ISSUE

ARC-DA-Z-01

E