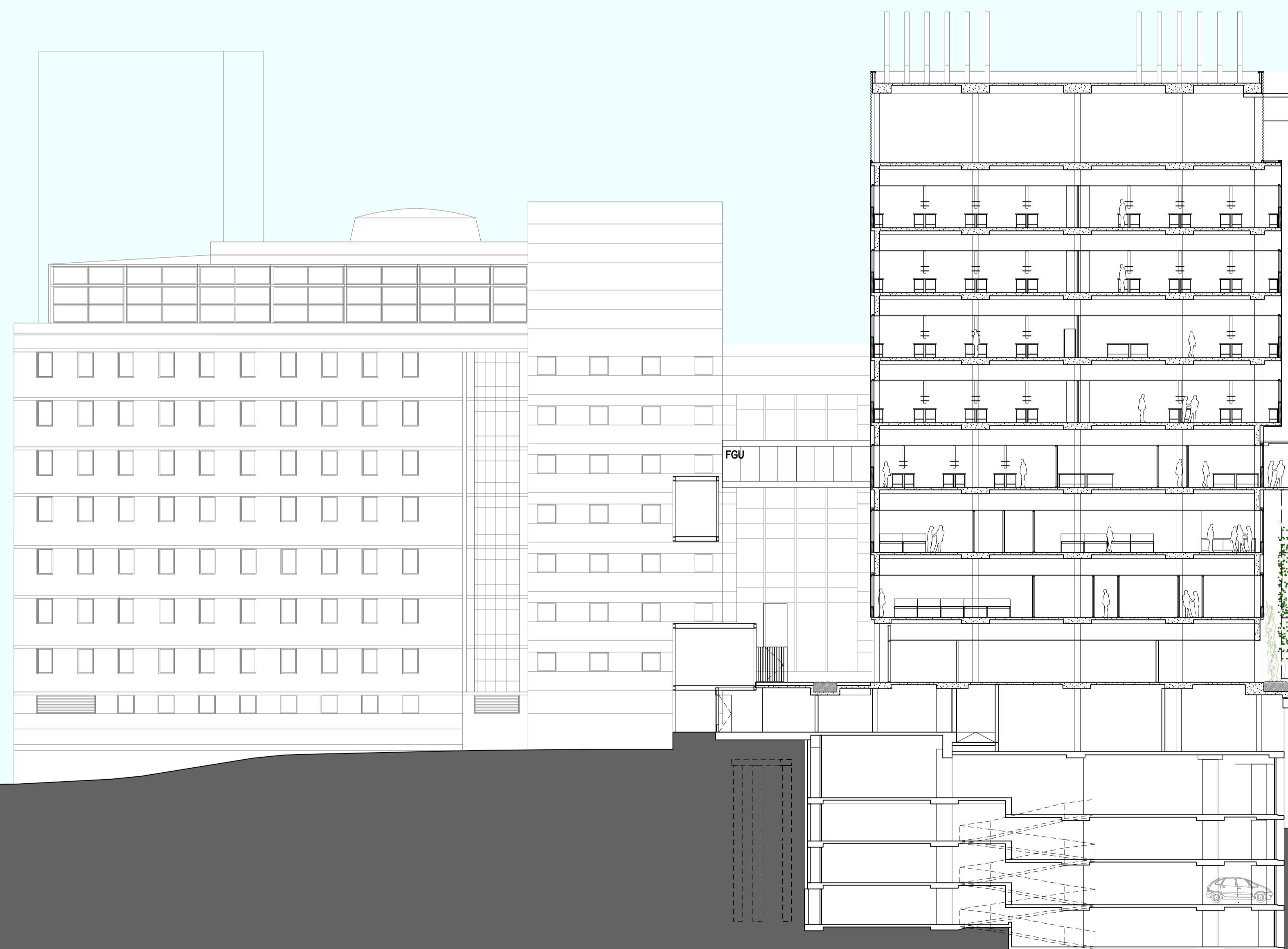


INTELLECTUAL PROPERTY
© COPYRIGHT BVN ARCHITECTURE PTY LIMITED. UNLESS OTHERWISE ADVISED IN WRITING, ALL RIGHTS TO USE THIS DOCUMENT ARE RESERVED TO BVN ARCHITECTURE PTY LIMITED. THIS DOCUMENT MAY ONLY BE USED FOR THE EXPRESS PURPOSE AND PROJECT FOR WHICH IT HAS BEEN CREATED AND ISSUED. ANY OTHER REUSE OF THIS DOCUMENT OR THE INFORMATION CONTAINED THEREIN, OR COPIED, OR UNAUTHORIZED USE OF THIS DOCUMENT IS AT THE USER'S SOLE RISK AND WITHOUT LIMITING BVN'S RIGHTS, THE USER RELEASES AND INDEMNIFIES BVN FROM AND AGAINST ALL LOSS OR DAMAGE.

ISSUE	DATE	FOR
A	27.03.09	FOR INFORMATION ONLY
B	08.04.09	FOR INFORMATION ONLY
C	17.04.09	FOR INFORMATION ONLY
D	24.04.09	FOR APPROVAL
E	04.06.09	FOR PLANNING APPLICATION
F	23.09.09	D&P FOR INFORMATION
G	29.09.09	D&P FOR APPROVAL
H	08.10.09	D&P FOR APPROVAL

TOP OF GARVAN INSTITUTE
RL 72.000



- PARAPET - RL 80.400
- LEVEL 12 - RL 74.500
- LEVEL 11 - RL 70.300
- LEVEL 10 - RL 66.100
- LEVEL 09 - RL 61.900
- LEVEL 08 - RL 57.700
- LEVEL 07 - RL 53.500
- LEVEL 06 - RL 49.300
- LEVEL 05 - RL 45.100
- LEVEL 04 - RL 40.900
- LOWY PACKER LEVEL 03 - RL 37.680
- LEVEL 03 - RL 36.415
- LEVEL 02 - RL 33.440
- LEVEL 02a - RL 32.340
- LEVEL 01 - RL 30.640
- LEVEL 01a - RL 29.440
- LEVEL B1 - RL 27.940
- LEVEL B1a - RL 26.515
- LEVEL B2 - RL 25.240
- LEVEL B2a - RL 23.790



CLIENT

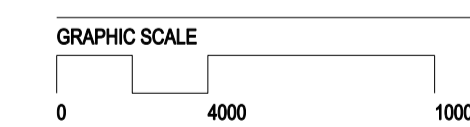
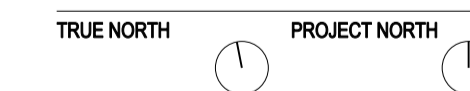
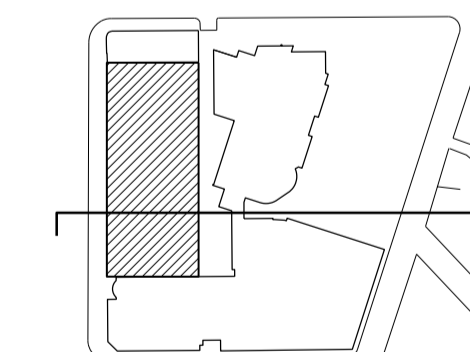
GARVAN INSTITUTE
AND ST VINCENTS &
MATER HEALTH SYDNEY

GARVAN & ST VINCENTS
CANCER CENTRE

BVN PROJECT NUMBER

s0901009

DRAWING KEY



SCALE
1:400 at A3
1:200 at A1

STATUS

DRAWING

WEST STREET | GARVAN INSTITUTE BEYOND | PROPOSED GSVCC | VICTORIA STREET | RETAIL TERRACE

SECTION 3-3'

DRAWING NUMBER	ISSUE
ARC-DA-F-03	H