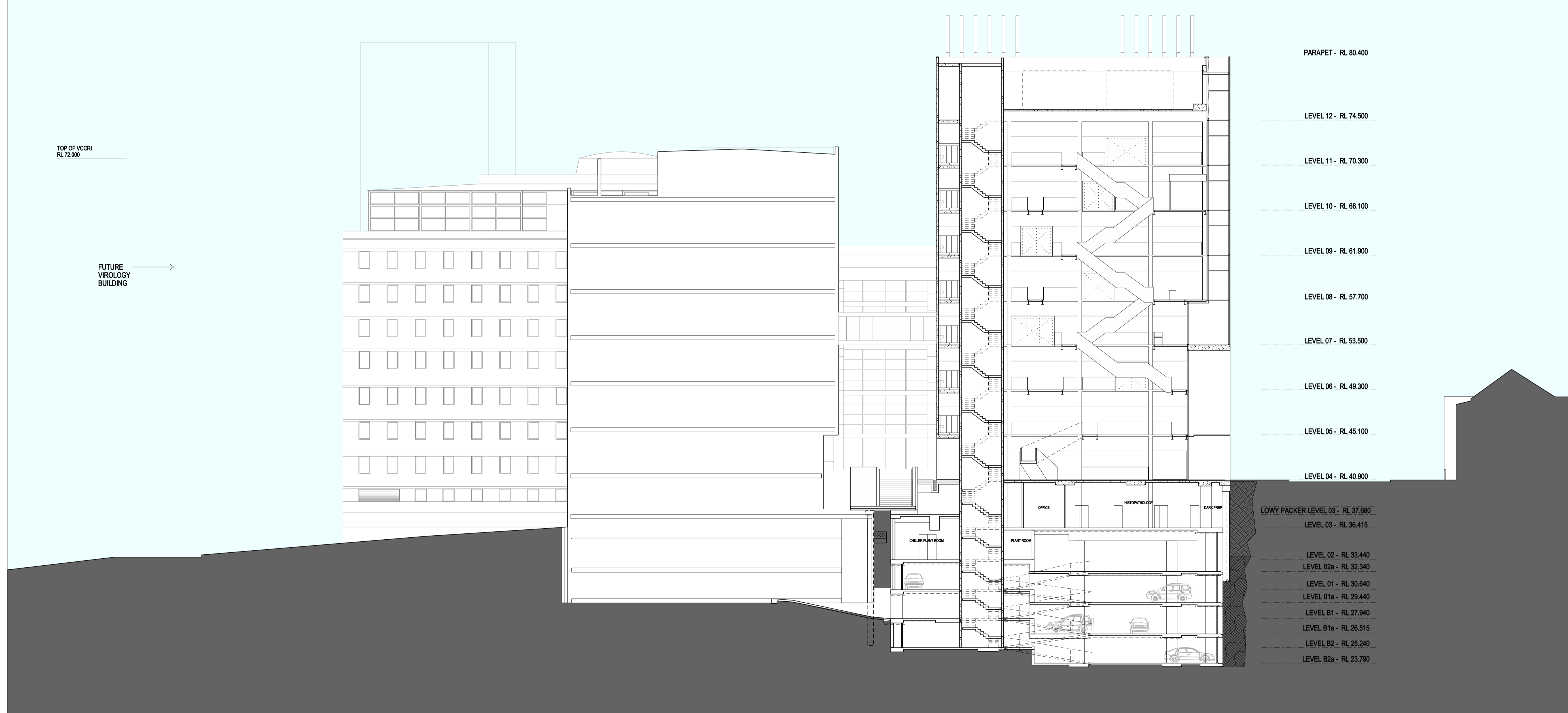


ISSUE	DATE	FOR
A	27.03.09	FOR INFORMATION ONLY
B	08.04.09	FOR INFORMATION ONLY
C	17.04.09	FOR INFORMATION ONLY
D	24.04.09	FOR APPROVAL
E	04.06.09	FOR PLANNING APPLICATION
F	11.09.09	FOR INFORMATION
G	23.09.09	D&P FOR INFORMATION
H	29.09.09	D&P FOR APPROVAL
I	06.10.09	D&P FOR APPROVAL



TOP OF VCCRI
RL 72.000

FUTURE
VIROLOGY
BUILDING

PARAPET - RL 80.400

LEVEL 12 - RL 74.500

LEVEL 11 - RL 70.300

LEVEL 10 - RL 66.100

LEVEL 09 - RL 61.900

LEVEL 08 - RL 57.700

LEVEL 07 - RL 53.500

LEVEL 06 - RL 49.300

LEVEL 05 - RL 45.100

LEVEL 04 - RL 40.900

LOWY PACKER LEVEL 03 - RL 37.660

LEVEL 03 - RL 36.415

LEVEL 02 - RL 33.440

LEVEL 02a - RL 32.340

LEVEL 01 - RL 30.640

LEVEL 01a - RL 29.440

LEVEL B1 - RL 27.940

LEVEL B1a - RL 26.515

LEVEL B2 - RL 25.240

LEVEL B2a - RL 23.790

WEST STREET

GARVAN INSTITUTE BEYOND

VCCRI

PROPOSED GSVCCC BEYOND

VICTORIA STREET

RETAIL TERRACE



CLIENT

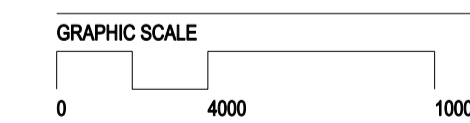
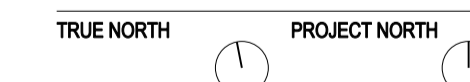
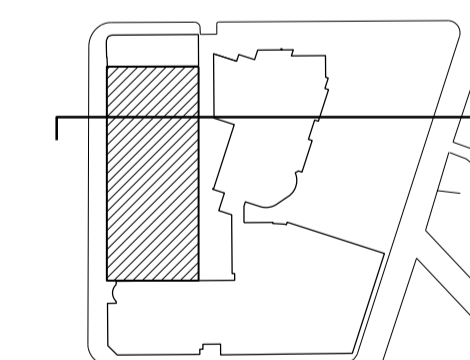
GARVAN INSTITUTE
AND ST VINCENTS &
MATER HEALTH SYDNEY

GARVAN & ST VINCENTS
CANCER CENTRE

BVN PROJECT NUMBER

s0901009

DRAWING KEY



1:400 at A3
1:200 at A1

STATUS

DRAWING

SECTION 1-1'

DRAWING NUMBER

ARC-DA-F-01

ISSUE

1