

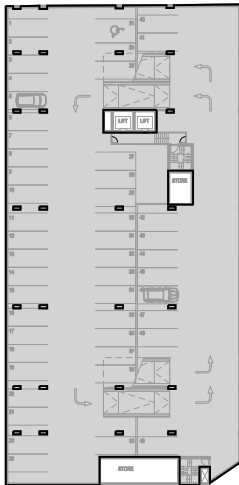
ISSUE	DATE	FOR
A	24.04.09	FOR APPROVAL
B	04.06.09	FOR PLANNING APPLICATION

GROSS FLOOR AREA

THE SUM OF THE AREAS OF EACH FLOOR OF A BUILDING  
WHERE THE AREA OF EACH FLOOR IS TAKEN TO BE THE AREA  
WITHIN THE OUTER FACE OF THE EXTERNAL ENCLOSING WALLS  
AS MEASURED AT A HEIGHT OF 1.4 METRES ABOVE EACH FLOOR  
EXCLUDING:

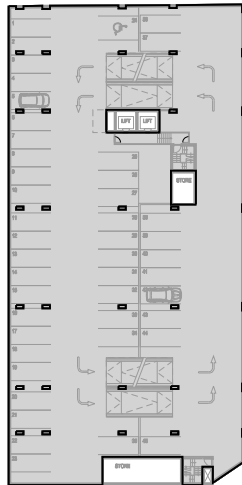
1. COLUMNS, FIN WALLS, SUN CONTROL DEVICES AND ANY  
ELEMENTS, PROJECTIONS OR WORKS OUTSIDE THE GENERAL  
LINES OF THE OUTER FACE OF EXTERNAL WALLS
2. LIFT TOWERS, COOLING TOWERS, MACHINERY AND PLANT  
ROOMS AND ANCILLARY STORAGE SPACE AND VERTICAL AIR  
CONDITIONING DUCTS.
3. CAR-PARKING AND ASSOCIATED ACCESS NEEDED TO MEET  
THE REQUIREMENTS OF THE COUNCIL
4. SPACE FOR THE LOADING AND UNLOADING OF GOODS

GROSS FLOOR AREA



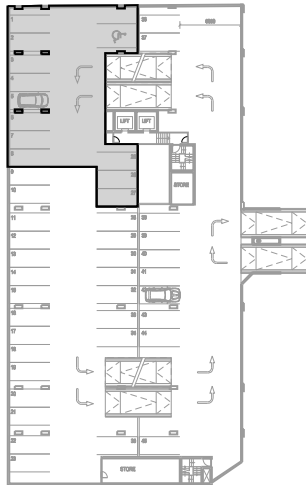
LEVEL B3 GFA APPROX. 1878 M2  
EXCESS 106 CAR SPACES TO BE INCLUDED AS GFA

- EXCLUDES:
1. LIFTS, RISERS
  2. STORAGE



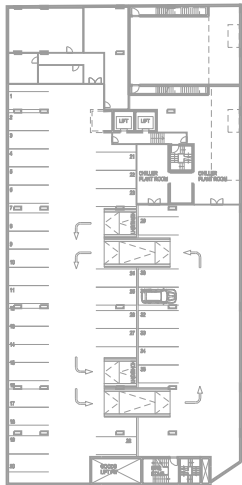
LEVEL B2 GFA APPROX. 1878 M2  
EXCESS 106 CAR SPACES TO BE INCLUDED AS GFA

- EXCLUDES:
1. LIFTS, RISERS
  2. STORAGE

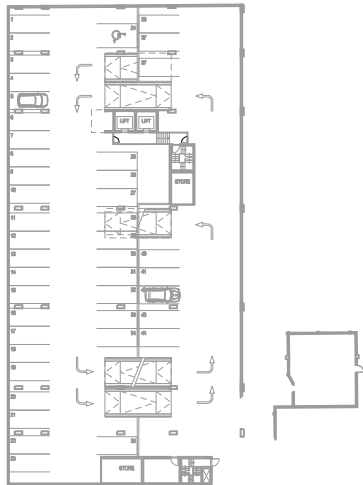


LEVEL B1 GFA APPROX. 341 M2  
EXCESS 106 CAR SPACES TO BE INCLUDED AS GFA

- EXCLUDES:
1. LIFTS, RISERS
  2. STORAGE



LEVEL 01 GFA EXCLUDED  
ALLOWANCE OF 111 CAR SPACES  
AS PER SSCC DCP OF 1 SPACE / 125 M2

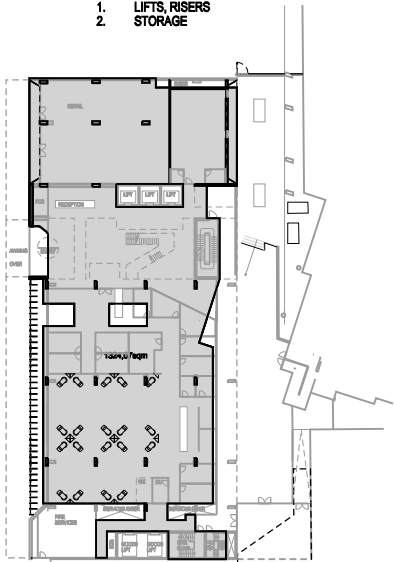


LEVEL 02 GFA EXCLUDED  
ALLOWANCE OF 111 CAR SPACES  
AS PER SSCC DCP OF 1 SPACE / 125 M2



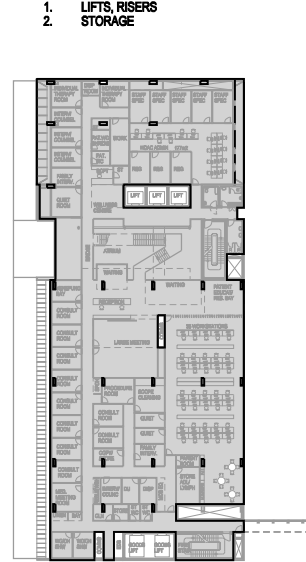
LEVEL 03 GFA APPROX. 1410 M2

- EXCLUDES:
1. LIFTS, RISERS
  2. MECHANICAL PLANT, SWITCHROOM, CHILLER PLANT
  3. MDF ROOM, HOIST, COMINGLED WASTE, CATERING COLD STORAGE CRYO STORE, FREEZER ROOM, BULK STORAGE



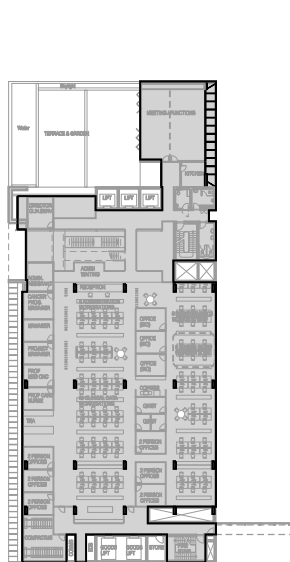
LEVEL 04 GFA APPROX. 1324 M2

- EXCLUDES:
1. LIFTS, RISERS
  2. FIRE SERVICES, EDB, F.C.R, COMMS



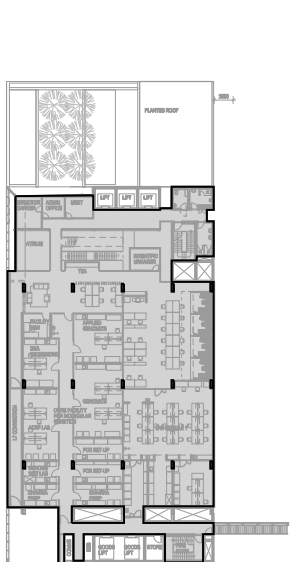
LEVEL 05 GFA APPROX. 1555 M2

- EXCLUDES:
1. LIFTS, RISERS
  2. COMMS, EDB



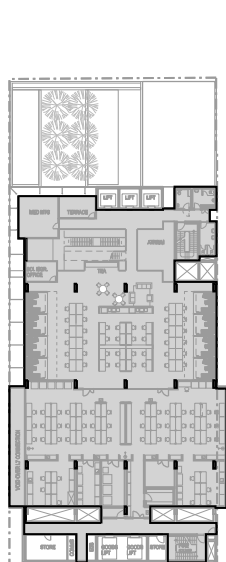
LEVEL 06 GFA APPROX. 1273 M2

- EXCLUDES:
1. LIFTS, RISERS
  2. COMMS, EDB



LEVEL 07 GFA APPROX. 1145 M2

- EXCLUDES:
1. LIFTS, RISERS
  2. COMMS, EDB



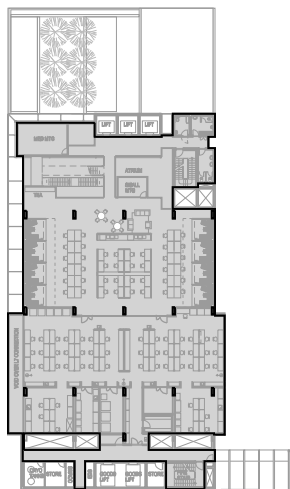
LEVEL 08 GFA APPROX. 1165 M2

- EXCLUDES:
1. LIFTS, RISERS
  2. COMMS, EDB



LEVEL 09 GFA APPROX. 1138 M2

- EXCLUDES:
1. LIFTS, RISERS
  2. COMMS, EDB



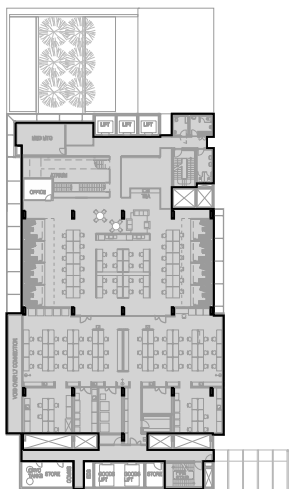
LEVEL 10 GFA APPROX. 1143 M2

- EXCLUDES:
1. LIFTS, RISERS
  2. COMMS, EDB



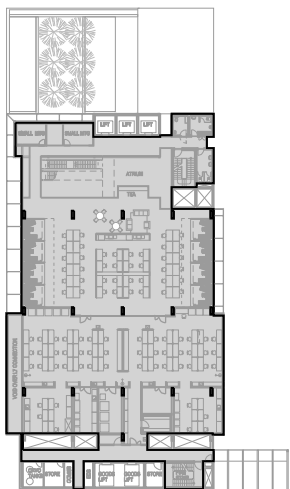
LEVEL 11 GFA APPROX. 362 M2

- EXCLUDES:
1. LIFTS, RISERS
  2. PLANT, COMMS, EDB



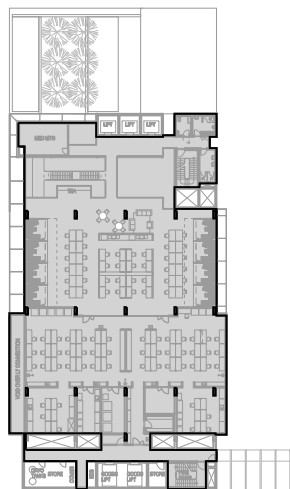
LEVEL 12 GFA APPROX. 1141 M2

- EXCLUDES:
1. LIFTS, RISERS
  2. COMMS, EDB



LEVEL 13 GFA APPROX. 1143 M2

- EXCLUDES:
1. LIFTS, RISERS
  2. COMMS, EDB



LEVEL 14 GFA APPROX. 1142 M2

- EXCLUDES:
1. LIFTS, RISERS
  2. COMMS, EDB