

Moore Theological College | Concept Plan

3rd August 2010
Revision E





KEY

STREETSCAPE - Carillon Ave

1. Unit paving to entry fore courts
2. Concrete paved driveway
3. Proposed tree plantings - *Lophostemon confertus*
4. Existing street trees retained in turf verge
5. Proposed street trees in turf verge
6. In situ concrete footpath - Carillon Ave
7. Proposed planting beds along street frontage with bands of native grasses, ground covers and shrubs including *Westringia fruticosa*, *Anigozanthus 'Regal Velvet'*, *Myoporum parvifolium*, *Acacia cognata 'LimeLight'*
8. Proposed tiled feature walls at entry points with possible wayfinding signage
9. Existing concrete driveway crossover
- 9a. Proposed concrete driveway crossover
10. Raised planter containing relocated palms - *Washingtonia Sp.*

STREETSCAPE - King Street

11. Unit paving to entry fore courts
12. Planting beds to periphery of retained terrace houses containing hardy native grasses and groundcovers such as *Anigozanthus 'Ruby Velvet'*, *Phormium cookianum* and *Dianella caerulea 'Breeze'*
13. Proposed tree planting - *Brachychiton acerifolius*
- 13a. Proposed Street tree planting in accordance with City of Sydney Street Tree Master Plan 2004 - *Platanus X hybrida*
14. Asphalt footpath - King Street
15. Bus stop located under proposed awning at main entry to building

SITE A - College Green

16. Paved stair access from Little Queen Street
17. Raised terraced planters with understorey planting containing *Beschermeria yuccoides*, *Phormium tenax*, *Doryanthes palmeri* and *myoporum parvifolium*
18. Paved colonnade with direct access to surrounding buildings.
19. Raised concrete planters containing evergreen trees and flowering understorey planting such as *Anthropodium cirratum*, *Ayuga reptans 'Catlin's Giant'* and *Dianella 'Silver Streak'*. Informal concrete seating provided at planter edges.
20. Decomposed granite spill out zone for large gatherings with evergreen shade canopy trees.
21. Timber bench seating to accommodate a variety of uses ie: informal study areas and opportunities for baby changing.
22. Lawn for informal active games
23. Access stairs to lawn
24. 450mm high seating stairs at periphery of lawn.
25. Wide concrete steps / daybeds with strips of understorey planting
26. Raised planter (+RL 42.90) with large deciduous feature tree and understorey planting including *Phormium tenax*, *Anigozanthus 'Ruby Velvet'* and *Banksia spinulosa 'Birthday candles'*
27. Decomposed granite path
28. Screen planting of bamboo around periphery of private terraces
29. Evergreen screening trees to western boundary edge of lawn with understorey planting including *Lomandra longifolia 'Tanika'*, *Asplenium australasicum* and *Viola hederacea*
30. Outdoor space associated with individual terrace houses beyond.

SITE B - Residential Courtyard

31. Paved circulation paths
32. Raised planting beds some with wide seating edges
33. Lawn / children's play
34. Children's play space with timber balance beams and play elements with native grasses
35. Communal gathering space with raised timber deck with seating and BBQ facilities
36. Timber deck / spillout zone from adjacent community room
37. Evergreen screening trees
38. Large evergreen feature tree
39. Gated access from surrounding streets
40. Decomposed granite circulation space
41. Waterfeature
42. Private terraces / gardens
43. Access path from fire stairs

SITE C - Residential Terraces

44. Existing outdoor terrace spaces associated with each individual home
45. Existing communal green space to be retained
46. Access path from street

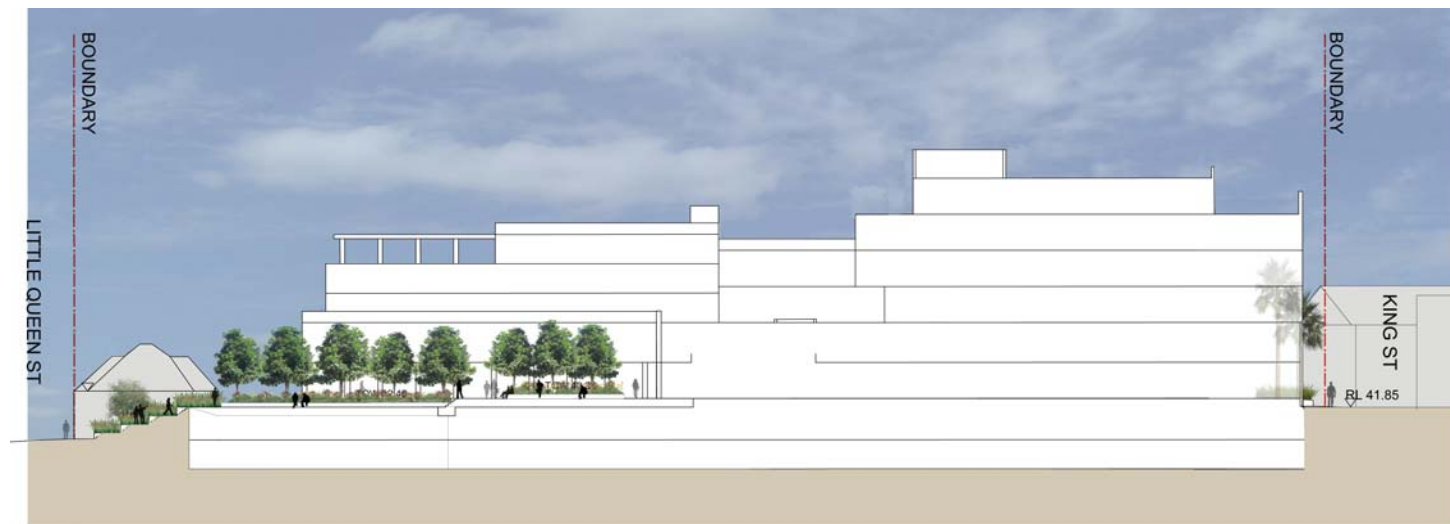
BUILDINGS

- Proposed Buildings
- Existing Buildings to be retained

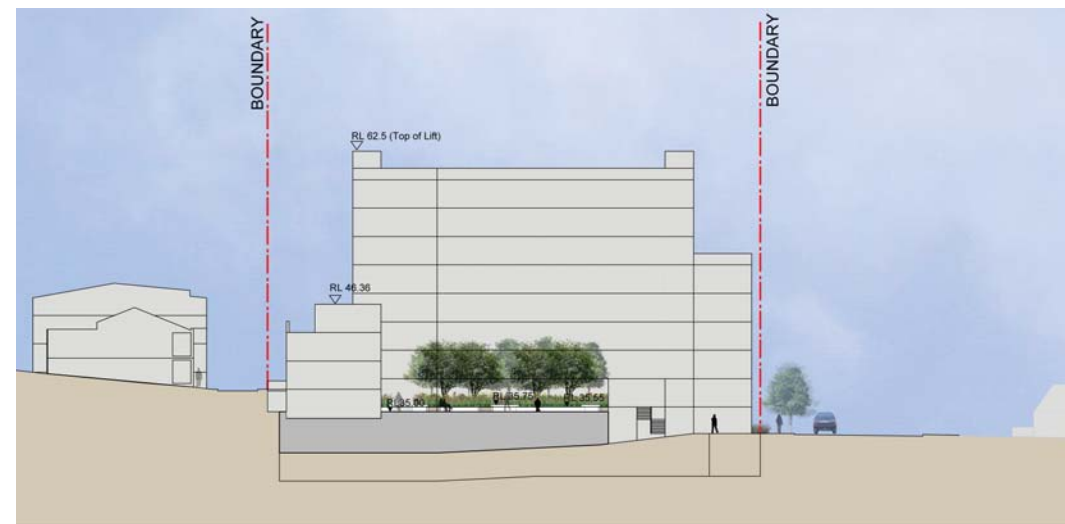
TREES

- Existing trees to be removed
- Proposed Trees
- Existing trees retained

CONCEPT MASTER PLAN



SECTION A-A



SECTION B-B

Moore Theological College | Newtown





KEY

- College Green
- Residential Courtyard Gardens
- Private Terraces
- Streetscape

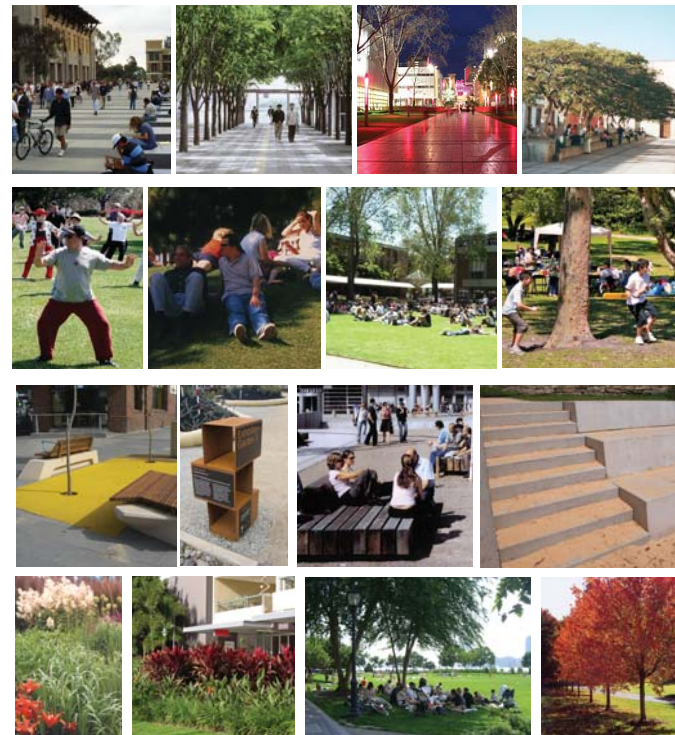
- Concept site boundary
- Pedestrian Entry Point
- Vehicular Entry Point

LANDSCAPE SPATIAL ANALYSIS

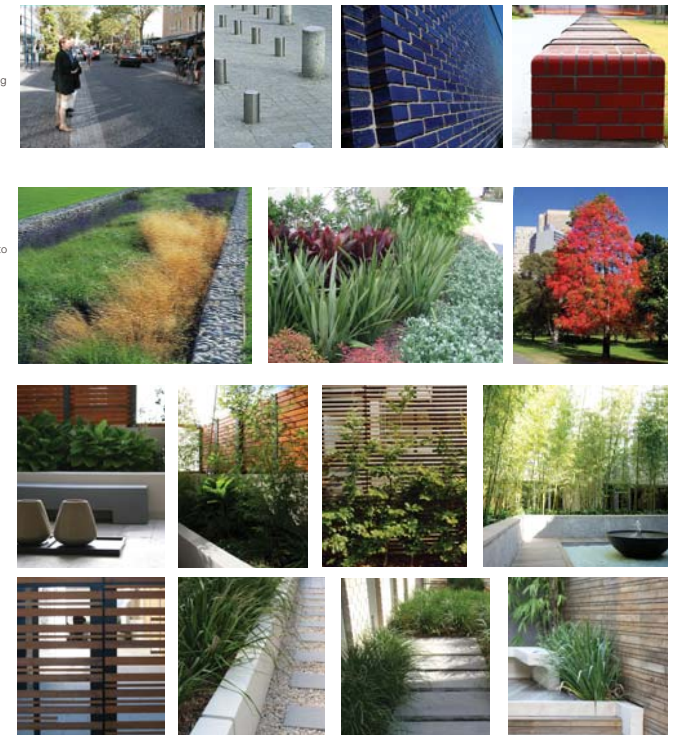
- Children's play**
- Provision of small children's play areas 'pods' within college gardens for use by children living on campus
 - Play spaces can include a sand pit, balancing beams, a small climbing net and timber decks / seating for supervising adults
- Planting**
- Detailed planting designs within the college gardens playing on colour texture and seasonality to create year long visual interest
 - Planting to provide privacy buffer between ground floor units and private open spaces
 - Planting to create a private oasis for residents of the college
- Communal / Gathering Space**
- Variety of seating types to cater for different uses
 - Seating to be of a generous scale and include day beds and lounges to encourage use and outdoor relaxation within the college gardens
- Passive Recreation**
- Provision of smaller, more intimate spaces in western courtyard for passive recreation and small gatherings
 - Water used as cooling and calming device to evoke the perception of a private oasis
 - Variety of seating to be set within highly detailed planted areas to provide privacy
 - Deciduous trees used to provide summer shade and allow for winter sun



- Pedestrian Access**
- Wide paved pedestrian mall providing major connection between college housing and learning / dining buildings
 - Internal spine that forms the main address / entry point from which major buildings and open spaces are hinged
 - Trees, lighting and seating create habitable spaces at the edge of the spine
- College Green**
- Flexible open turf area for formal events, casual gatherings and lunch time use
 - Provides opportunities for small informal games / activities and children's play
 - Casual study space
- Passive Recreation Areas**
- Provision of smaller, more intimate spaces in for passive recreation and small gatherings
 - Variety of seating to accommodate different user groups within planted areas to provide privacy
 - Seating steps providing informal seating at edges
- Buffer Planting + Trees**
- Planting of varying heights, colours and textures used to provide a green buffer between public spaces and private terrace houses to the west
 - Provision of evergreen canopy trees that provide year long shade and screening
 - Provision of deciduous feature trees to provide summer shade, winter sun and seasonal variation



- Hardworks**
- High quality unit paving provided to highlight entry points
 - Tiles feature walls to provide element of public art, signifying entry points and accommodating wayfinding signage
 - Vehicular entries treated as shared zone to allow for pedestrian use of space
- Planting**
- Bands of planting providing a green buffer between building and footpaths
 - Planting of different colour, texture and flowers used to animate the streetscape experience
 - Small flowering trees used to highlight the main entry point on King Street
- Private terraces**
- Paved private landscaped zone for ground floor apartments
 - Private terraces to include areas for planting and low palisade fences at periphery for security and privacy



Moore Theological College | Newtown





INDICATIVE PLANT IMAGES - TREES



Magnolia grandiflora 'Little Gem' Koelreuteria paniculata Waterhousia floribunda 'Sweeper'



Bambusa textilis 'Gracilis' Elaeocarpus eumundi Jacaranda mimosifolia



Brachychiton acerfolius Glochidion ferdianii Lophostemon confertus

INDICATIVE PLANTING PALETTES

ZONE 1 - SITE B - RESIDENTIAL COURTYARD GARDENS

PLANT SCHEDULE>

BOTANICAL NAME	COMMON NAME	POT SIZE	ORIGIN
<i>Koelreuteria paniculata</i>	Golden Rain Tree	400L	Exotic
<i>Magnolia grandiflora</i> 'Little Gem'	Little Gem Magnolia	400L	Exotic
<i>Waterhousia floribunda</i> 'Sweeper'	Weeping Lilly	100L	Native
<i>Aechmea</i> sp.	Bromeliad	200mm	Exotic
<i>Alphina caerulea</i> 'Red Back'	Native Ginger	300mm	Native
<i>Arthropodium cirratum</i>	Renga Renga Lily	200mm	Exotic
<i>Asplenium australasicum</i>	Birds Nest Fern	200mm	Native
<i>Beschorneria yuccoides</i>	Mexican Lily	200mm	Exotic
<i>Blechnum cartilagineum</i>	Gristle Fern	150mm	Native
<i>Calathea zebrina</i>	Zebra Plant	150mm	Exotic
<i>Cocytine australis</i>	Cabbage Tree	200mm	Exotic
<i>Cyathea cooperi</i>	Coin Spot Tree Fern	400mm	Native
<i>Dianella caerulea</i> 'Breeze'	'Breeze' Flax Lily	150mm	Native
<i>Diets robinsoniana</i>	Wedding Lily	150mm	Native
<i>Iris x germanica</i>	Bearded Iris	150mm	Exotic
<i>Philodendron 'Congo'</i>	Congo Philodendron	200mm	Exotic
<i>Phormium tenax</i>	New Zealand Flax	150mm	Exotic
<i>Phormium cookianum</i>	Mountain Flax	200mm	Exotic
<i>Strelitzia reginae</i>	Bird of Paradise	200mm	Exotic
<i>Viola hederacea</i>	Native Violet	Tube Stock	Native
<i>Zephyranthes candida</i>	Fairy Lily	150mm	Exotic

ZONE 2 - SITE A - COLLEGE GREEN

PLANT SCHEDULE>

BOTANICAL NAME	COMMON NAME	POT SIZE	ORIGIN
<i>Bambusa textilis</i> 'Gracilis'	Graceful Bamboo	300mm	Exotic
<i>Elaeocarpus eumundi</i>	Smooth Leaved Quandong	200L	Native
<i>Flindersia australis</i>	Crow Ash	200L	Native
<i>Glochidion ferdianii</i>	Cheese Tree	200L	Native
<i>Jacaranda mimosifolia</i>	Jacaranda Tree	400L	Exotic
<i>Acacia cognata</i> 'Limelight'	'Limelight' Wattle	150mm	Native
<i>Anigozanthus 'Regal Velvet'</i>	'Regal Velvet' Kangaroo Paw	150mm	Native
<i>Anigozanthus 'Ruby Velvet'</i>	'Ruby Velvet' Kangaroo Paw	150mm	Native
<i>Renga Renga Lily</i>	Renga Renga Lily	200mm	Exotic
<i>Birds Nest Fern</i>	Birds Nest Fern	200mm	Native
<i>Banksia spinulosa</i> 'Birthday Candles'	'Birthday Candle' Banksia	200mm	Native
<i>Beschorneria yuccoides</i>	Mexican Lily	200mm	Exotic
<i>Dianella ensiformis</i> 'Silver Streak'	'Silver Streak' Flax Lily	150mm	Native
<i>Dichondra repens</i> 'Silver Falls'	Silver Falls Dichondra	100mm	Native
<i>Doryanthes palmeri</i>	Giant Spear Lily	300mm	Native
<i>Lomandra longifolia</i> 'Tanika'	'Tanika' Mat Bush	150mm	Native
<i>Pennisetum alopecuroides</i> 'Black Lea'	'Black Lea' Fountain Grass	150mm	Native
<i>Phormium tenax</i>	New Zealand Flax	150mm	Exotic
<i>Viola hederacea</i>	Native Violet	150mm	Native

ZONE 3 - STREETSCAPE

PLANT SCHEDULE>

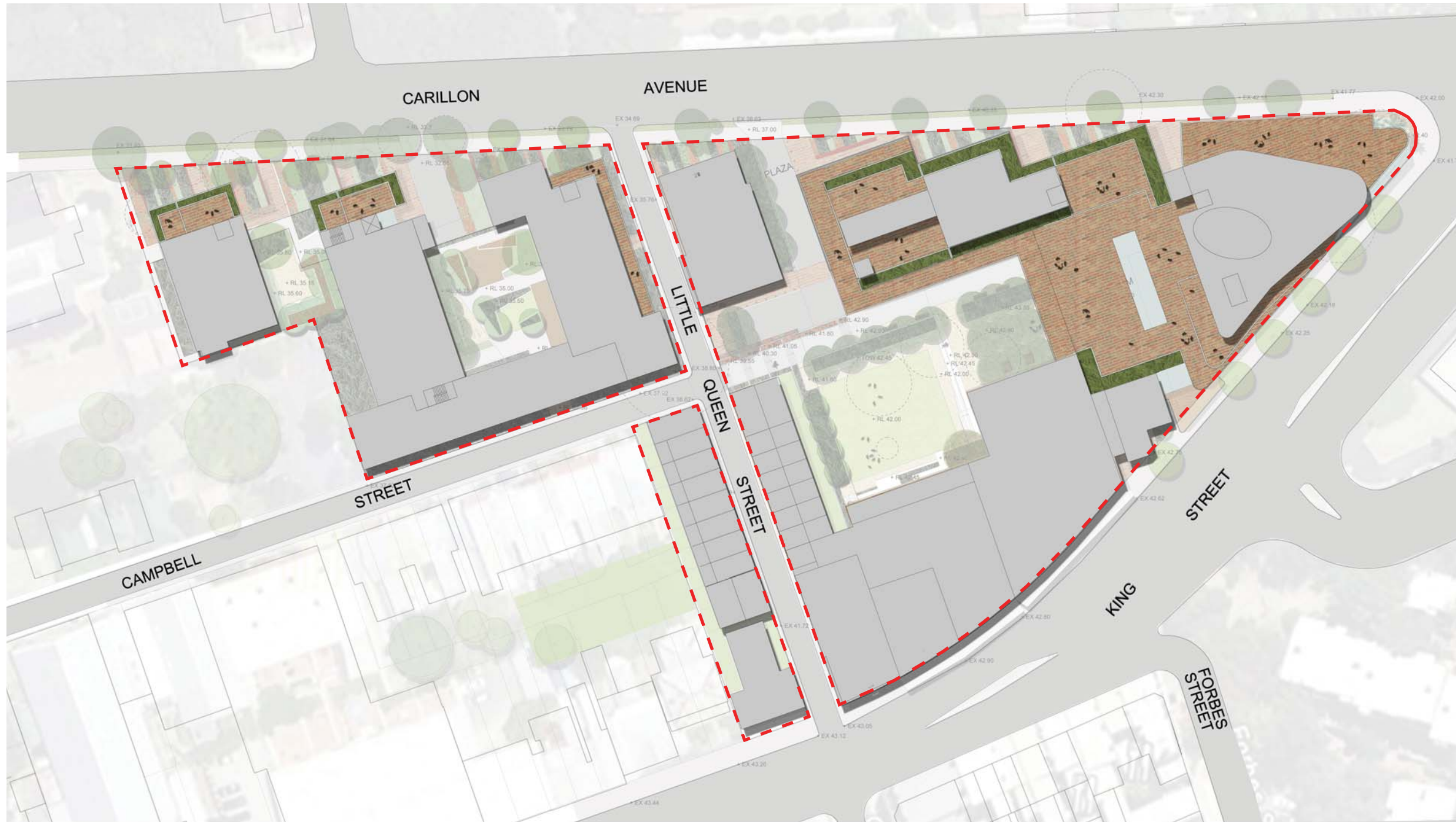
BOTANICAL NAME	COMMON NAME	POT SIZE	ORIGIN
Street trees to match existing plus:			
<i>Brachychiton acerfolius</i>	Illawarra Flame Tree	200L	Native
<i>Glochidion ferdianii</i>	Cheese Tree	200L	Native
<i>Lophostemon confertus</i>	Brisbane Box	200L	Native
<i>Platanus X hybrida</i>	Plane Tree	200L	Exotic
<i>Acacia cognata</i> 'Limelight'	'Limelight' Wattle	200mm	Native
<i>Anigozanthus 'Regal Velvet'</i>	'Regal Velvet' Kangaroo Paw	150mm	Native
<i>Anigozanthus 'Ruby Velvet'</i>	'Ruby Velvet' Kangaroo Paw	150mm	Native
<i>Dianella caerulea</i> 'Breeze'	'Breeze' Flax Lily	150mm	Native
<i>Dianella ensiformis</i> 'Silver Streak'	'Silver Streak' Flax Lily	150mm	Native
<i>Diets robinsoniana</i>	Wedding Lily	150mm	Native
<i>Lomandra longifolia</i> 'Tanika'	'Tanika' Mat Bush	150mm	Native
<i>Myoporum parvifolium</i>	Boobialla	200mm	Native
<i>Pennisetum alopecuroides</i> 'Purple Lea'	'Purple Lea' Fountain Grass	150mm	Native
<i>Phormium cookianum</i>	Mountain Flax	200mm	Exotic
<i>Poa polyiformis</i> 'Kingsdale'	'Kingsdale' Grey Tussock	150mm	Native
<i>Poa labillardieri</i> 'Eskdale'	'Eskdale' Blue Tussock Grass	150mm	Native
<i>Westringia fruticosa</i>	Westringia	200mm	Native

INDICATIVE PLANT IMAGES - UNDERSTOREY



Moore Theological College | Newtown





KEY

- Concept site boundary
- Adjacent Roofs
- Roof Terraces for communal use
- Indicative Raised Planter Beds

* Note: Landscaping to roof terraces indicative only. Final design layout to future stages of development.

LANDSCAPE PLAN - ROOF TERRACES

PRECEDENTS



Unit paving

Raised concrete planters

Variety of spaces

Variety of uses

Moore Theological College | Newtown



Moore Theological College | Project Application

RESOURCE AND RESEARCH CENTRE
3rd August 2010
Revision E





CONCEPT MASTER PLAN

KEY

--- Concept master plan site boundary

--- Project Application site boundary





KEY

STREETSCAPE - Carillon Ave

- 1. Existing driveway entry to on grade carpark
- 2. Existing street trees retained in turf verge
- 3. Proposed trees (*Jacaranda mimosifolia*)
- 4. In situ concrete footpath - Carillon Ave

CARPARK 1

- 5. Low wall with timber fence attached
- 6. Sliding timber gates
- 7. Existing carport to be relocated (shown dashed)
- 8. Proposed planting beds along street frontage with bands of native grasses and ground covers including *Anigozanthos* 'Regal Velvet', *Myoporum parvifolium*, *Acacia cognata* 'Limelight'

CARPARK 2

- 9. Retaining wall to periphery of Carpark 2 with proposed balustrade with mesh infill attached
- 10. Existing trees retained within periphery of Carpark 2
- 11. Vehicular entry, existing driveway crossover extended
- 12. Existing vehicular entry to 38-44 Carillon Ave townhouses
- 13. Sliding timber gates

TREE PROTECTION

Protection measures will be implemented at a later stage to ensure the protection of existing trees within the carpark boundaries. This will include adequate permeability to the surrounds of the existing trees as well as bollards to prevent vehicular conflict. Existing levels have been maintained where possible around the base of each existing tree to avoid damage to tree roots. Protection measure will be implemented under consultation with the project arborist to ensure the successful retention of existing trees.

- Planning Application Site Boundary
- Existing Buildings to be demolished
- Existing Buildings retained
- Indicative street light locations shown only, to be confirmed by lighting engineer in future stage of work
- TREES**
- Existing Trees Removed
- Proposed Trees
- Existing Trees Retained
- Fence installed on hand excavated pier footings to protect existing tree roots

LANDSCAPE PLAN - CAR PARK FACILITY

Plant Images



Jacaranda mimosifolia



Anigozanthos 'Regal Velvet'



Acacia cognata 'Limelight'



Lomandra longifolia 'Tanika'



Myoporum parvifolium 'Yareena'



Dianella caerulea 'Breeze'

Plant Schedule

BOTANICAL NAME	COMMON NAME	POT SIZE	ORIGIN
<i>Jacaranda mimosifolia</i>	Jacaranda	200L	Exotic
<i>Acacia cognata</i> 'Limelight'	'Limelight' Wattle	200mm	Native
<i>Anigozanthos</i> 'Ruby Velvet'	'Ruby Velvet' Kangaroo Paw	150mm	Native
<i>Dianella caerulea</i> 'Breeze'	'Breeze' Flax Lily	150mm	Native
<i>Lomandra longifolia</i> 'Tanika'	'Tanika' Mat Bush	150mm	Native
<i>Myoporum parvifolium</i> 'Yareena'	'Yareena' Creeping Boobiala	150mm	Native

