



NSW GOVERNMENT
Planning

Issued under the Environmental Planning and Assessment Act 1979

Approved Section 75W Modification Application

No. 4 granted on the 06.03.2013

in respect to MP 08-0259

Signed [Signature]

Sheet No. 2 of 4

DEVELOPMENT DATA

SITE AREA	38500m ²
WAREHOUSE AREA (note 1)	34530m ²
PLANT (enclosed) (note2)	21886m ²
OFFICE AREA	2384m ²
TOTAL BUILDING AREA (note3)	40091m ²
TOTAL BUILDING FOOTPRINT	22282m ²
TOTAL LANDSCAPE AREA	6882m ² (17.87%)
SOFT LANDSCAPE AREA	3286m ²
PERMEABLE LANDSCAPE AREA	3596m ²
HARDSTAND AREA	9237m ²
SITE COVER (note4)	57.8%
FLOOR SPACE RATIO (note5)	103.5%
NUMBER OF OFFICE LEVELS	3
BUILDING HEIGHT (note6)	31.7m
MINIMUM SETBACKS > 7.5m to Bellevue circuit (north)	
PARKING SPACES REQUIRED (note7)	175
PARKING SPACES PROVIDED (note8)	175
BICYCLE HOOPS PROVIDED	6 (FOR 12 BICYCLES)
EMPLOYEES	148 approx.
HOURS OF OPERATION	24 hours, 7 days

NOTES:


- including loading dock, store and staging area, but excluding enclosed plant and circulation.
- including ups plant and future tri-gen plant.
- used for FSR calculation: excluding vertical circulation, storage, loading facilities, services and enclosed plant.
- percentage of building footprint on site
- includes warehouse and office.
- excludes enclosed rooftop plant area
- based on 1 space per 300m² of warehouse floor space and 1 per 40m² of office floor area.
- All car spaces are 2400mm wide x 5400mm deep. Includes 5 accessible spaces

- EXISTING BUILDING
- PROPOSED BUILDING
- EXISTING HARDSTAND AREA TO BE MAINTAINED
- PROPOSED NEW HARDSTAND AREA
- PERMEABLE LANDSCAPING
- LANDSCAPING





1 EAST ELEVATION
1:200

 NSW GOVERNMENT
Planning

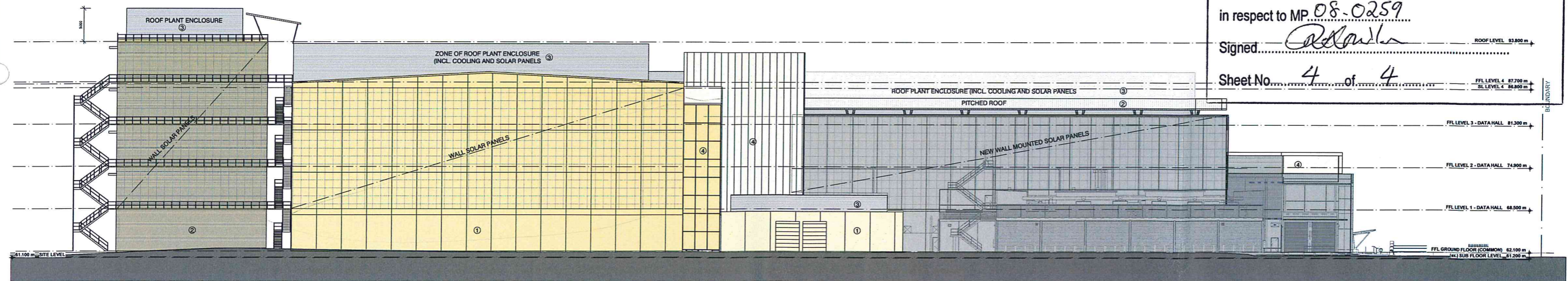
Issued under the Environmental Planning and Assessment Act 1979

Approved Section 75W Modification Application
No. 4 granted on the 06.03.2013

in respect to MP 08-0259



Signed *[Signature]*

Sheet No. 4 of 4



2 WEST ELEVATION
1:200

- MATERIALS LEGEND**
- ① PRE-CAST CONCRETE
 - ② PRE-FINISHED METAL / SHEETMETAL
 - ③ METAL LOUVRES / LOUVRED FACADE
 - ④ GLAZING & / OR TRANSLUCENT / TRANSPARENT RIBBED MATERIAL

-  EXISTING BUILDING
-  PROPOSED BUILDING

Rev	Date	Revised by	Description
A	03/12/12		REQUEST FOR ACTIONAL INFORMATION