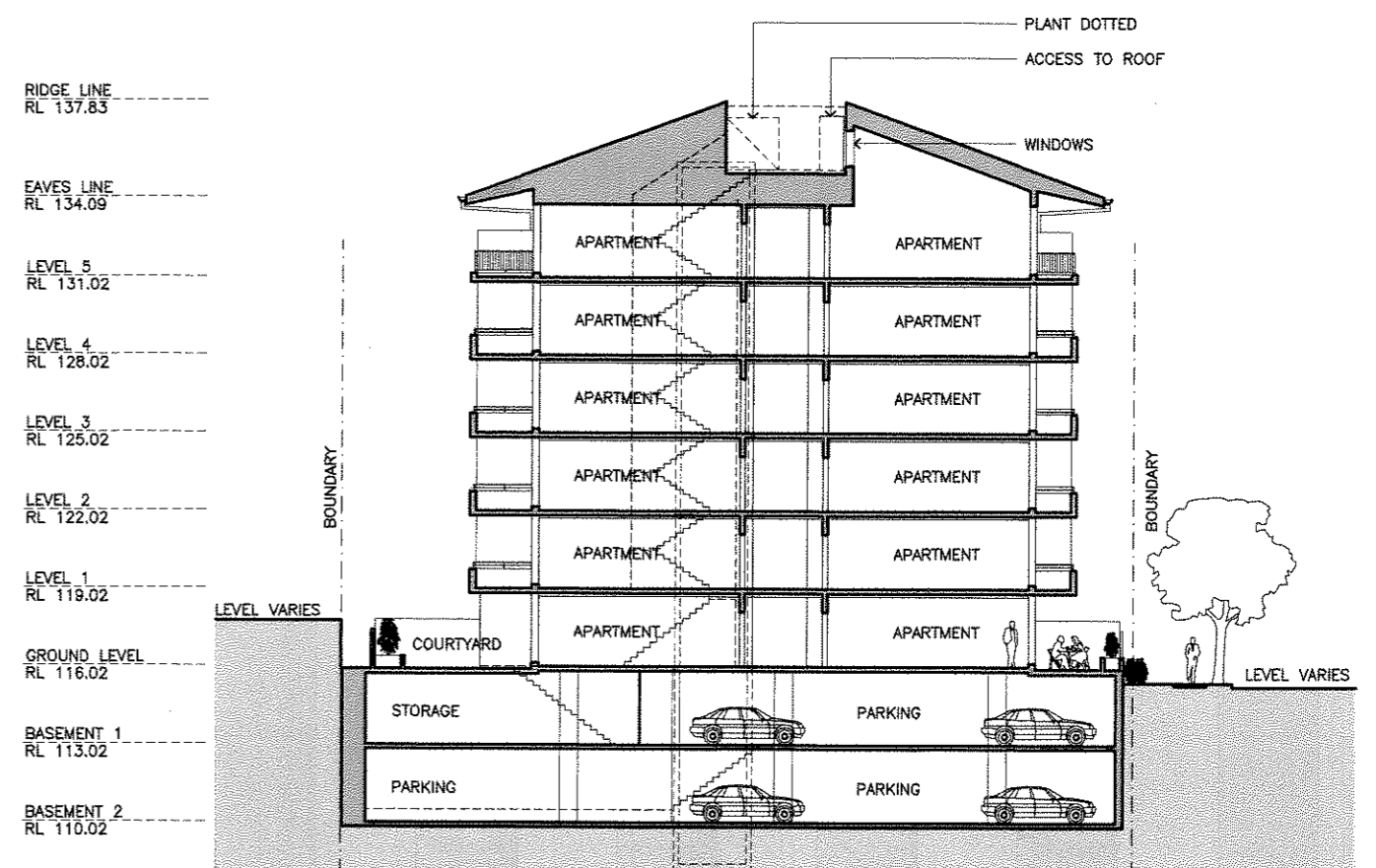
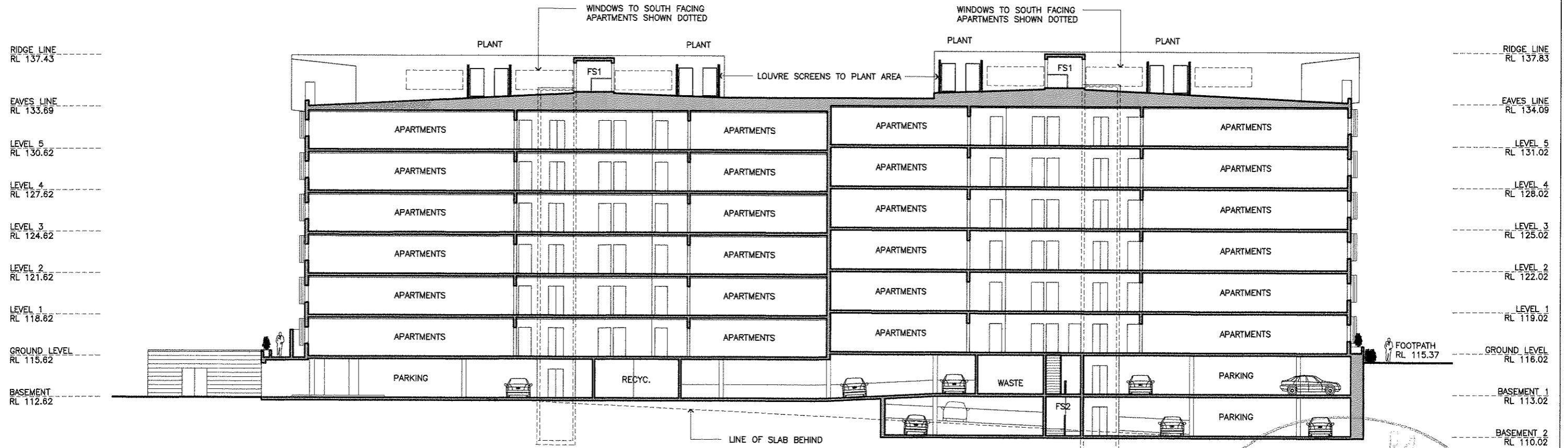


Section AA



Section BB



Section CC

ABSA
 20241 010A12
 27/01/09
 APPROVED

| Revision | Date | Key Plan | Consultants | Project Manager | Clerk | Architect | Project |
|----------|-----------------------------|----------|---|---|---|---|---|
| A | Prepoc Application 06/04/09 | | Landscape: Alcock Shanks Civil: Worley Parsons Pty Ltd Structural: Erwin Group Pty Ltd Services: Lincoln Steel Traffic: Hiskow MVT Planner: JSA Studio 51, Level 5, 81 Melbourne St, Surry Hills, NSW, 2010 Level 10, 141 Wattle St, North Sydney, NSW, 2060 Level 4, 3 Glen St, Wilshire Plaza, NSW, 2038 Level 1, 41 MacLennan St, North Sydney, NSW, 2060 Suite 20, 800 Pacific Hwy, Chateau, NSW, 2037 Level 7, 77 Berry Street, North Sydney, NSW, 2060 Tel: 02 9699 7182 Tel: 02 9400 7222 Tel: 02 9934 1444 Tel: 02 9937 0900 Tel: 02 9410 4100 Tel: 02 9459 4043 | Michael Lister Pty Ltd Level 1, 1 Hickson Road The Rocks NSW 2000 T 612 9247528 F 612 9247209 | Sydney Goodstart Property Pty Ltd Level 11, Suite 1101, 14 Jervis Place Sydney NSW 2000 T 612 9232 8077 F 612 9221 4139 www.sgp.com.au | PTW Architects Level 17, 4 Castlereagh St Sydney NSW Australia 2000 T 612 9232 8077 F 612 9221 4139 www.ptw.com.au | Epping Park 83 Victoria Lane, Epping |