

Appendix E

Alternative Power Line Route Option

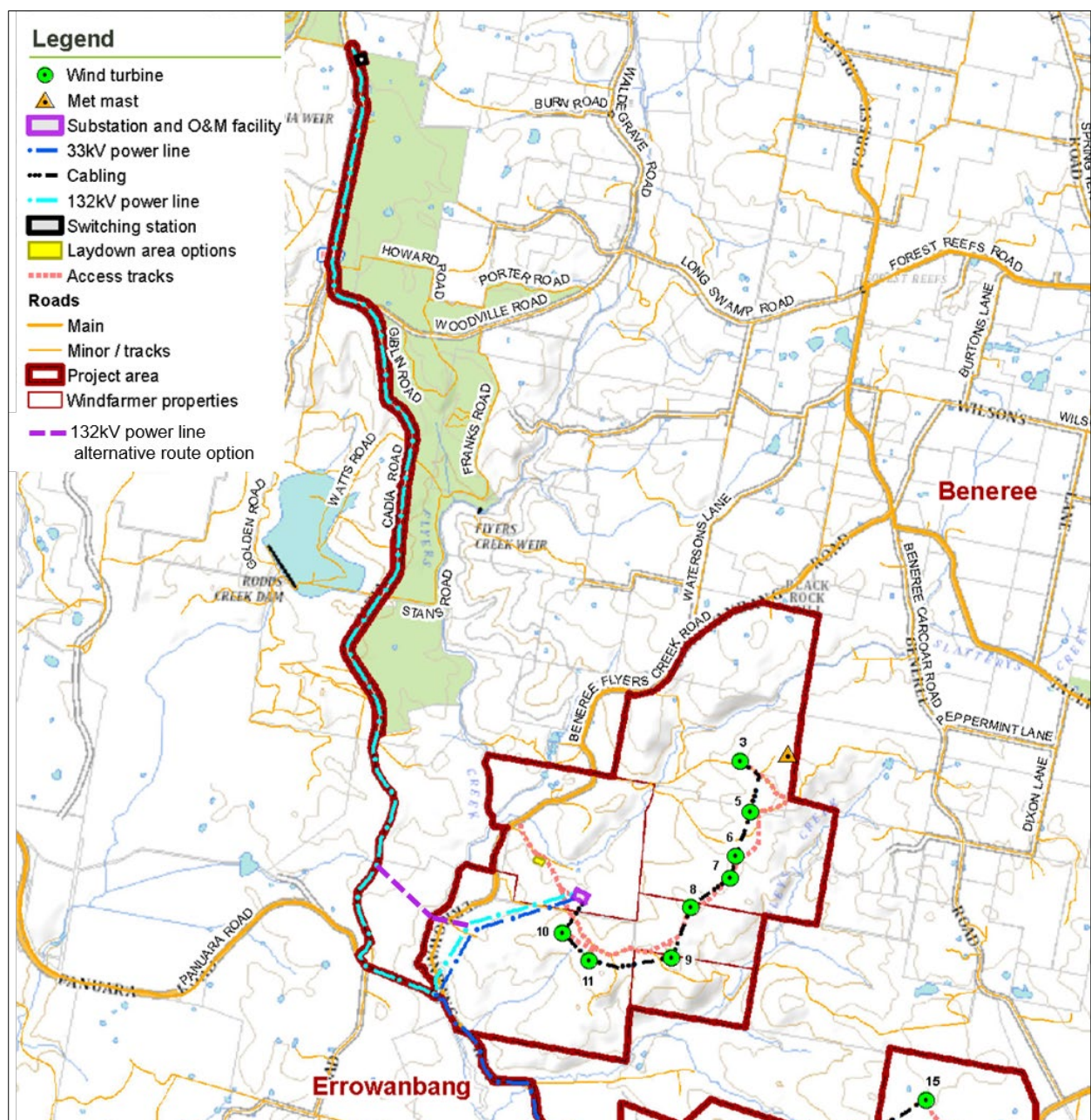
Appendix E: Alternative Power Line Route Option

Modification 4 includes the 132kV Reinstated Transmission Line to be located within an assessed 100m wide corridor. During the Modification 4 exhibition period a neighbouring landholder contacted the Proponent with a suggestion for an alternative route corridor option for a short section of the Reinstated Transmission Line (see Figure E1 below).

This option offers the potential for reduced impacts and so has been included as part of Modification 4 as an alternative for the corresponding section of the route corridor assessed in the Modification 4 Environmental Assessment. The final route for the Reinstated Transmission Line will be selected from these two alternative options as part of the ongoing detailed design of the Project and following finalisation of relevant landholder negotiations.

Detailed information on the alternative route corridor option is described below.

Figure E1: Alternative Route Option Corridor



Description of alternative route corridor option

The proposed alternative route option for the relevant section of the Reinstated Transmission Line route corridor is shown in Figure E1 and Photograph E1. It would, if selected as the final preferred option for the Reinstated Transmission Line during detailed design, replace an approximately 3.1km section of the route corridor assessed in the Modification 4 Environmental Assessment which travels across rural land (improved grazing pasture), the Errowanbang Road and Flyers Creek and then travels along the Panuara Road and Cadia Road reserves.

This section of the route corridor assessed in the Modification 4 Environmental Assessment which would be replaced if the alternative option is selected as preferred is an approximately 1.3km section of power line which would travel across rural land (improved grazing pasture) in a north westerly direction, crossing the Errowanbang Road, Flyers Creek and then re-join the currently proposed route corridor at the Cadia Road.

The proposed alternative section of power line would be located approximately 1km north of the existing proposed location of the power line and would, if selected as preferred, essentially replace a 'u' shaped section of the line with a direct route, resulting in a reduction in the overall length of the currently proposed power line by approximately 1.8km.

The overall length of the Reinstated Transmission Line is approximately 14.5km. The overall length of the proposed alternative route option is approximately 12.7 km.

Photograph E1: Alternative Route Option Corridor

Photograph taken looking eastwards from location on alternative route option corridor.



Properties

The alternative route corridor option would, if selected as preferred, result in the removal of the power line from the Panuara Road reserve and a short section of the Cadia Road reserve and the following property would be included in the project site:

- Landowner C: Lot 421, DP 1084679

Environmental Assessment

An updated environmental assessment has been carried out for the alternative route corridor option. As outlined above, this route corridor option has not yet been selected as preferred and a decision will be made as to which of the two alternative options will be constructed as part of the ongoing detailed design of the project.

Visual

Potential visual impacts of the Reinstated Transmission Line have been assessed in the updated Visual Impact Assessment lodged with the Modification 4 Environmental Assessment. The alternative route option would, if selected as preferred, improve the potential visual impacts for the property located on the corner of Errowanbang and Panuara Road (Residence 17) as the power line would be located further away from this property (approximately 750m) than in the alternative route option. The alternative route option would be no closer to Residence 88 (not involved) or Residence 109 (involved), however these residences may have increased visibility of more sections of the power line. The potential visual impact remains as assessed in Modification 4 for the electrical infrastructure would be unlikely to have a significant visual impact on surrounding dwelling locations.

Biodiversity

A Biodiversity Development Assessment Report (BDAR) has been completed for the current proposed power line route option (Option 1) and the alternative route option (Option 2) (Appendix D). The alternative route corridor option (Option 2) would offer a small reduction in the amount of clearing of native vegetation.

Aboriginal and historic heritage

An updated aboriginal and historic heritage impact assessment of the Reinstated Transmission Line was undertaken as part of the Modification 4 Environmental Assessment. This assessment remains relevant to the alternative route corridor as this location was included in the study area due to its proximity to the current proposed route corridor. The assessment noted that the landscape is assessed to be of generally low archaeological potential and that numerous assessments have been conducted in respect of the Flyers Creek Wind Farm and all have concluded that the landscape is of low sensitivity. The assessment concluded that there are no known Aboriginal sites and there is a low probability of objects occurring in the proposed activity area.

Consultation

Blayney Shire Council were consulted regarding the alternative route option. The Council offered no objection to the alternative route corridor and noted that there was some biodiversity that exists alongside Flyers Creek. This is also present at the proposed crossing point of Flyers Creek in the current proposed route. Biodiversity identification and impacts is included in the BDAR in Appendix D.

Summary

This option offers the potential for reduced impacts and so has been included as part of Modification 4 as an alternative for the corresponding section of the route corridor assessed in the Modification 4 Environmental Assessment. The final route for the Reinstated Transmission Line will be selected from these two alternative options as part of the ongoing detailed design of the Project and following finalisation of relevant landholder negotiations.