

## **Appendix L**

### **Community Newsletter (July 2018)**

# Flyers Creek Wind Farm Newsletter



infigen

July 2018

**Welcome** to the latest Flyers Creek Wind Farm project newsletter.

## Project Update

Flyers Creek Wind Farm is located near Errowanbang Road, Blayney Shire Council. It was granted Project Approval by the NSW Government Planning Assessment Commission (PAC) in March 2014.

Infigen has been preparing a planning modification application for the project to increase the wind turbine maximum tip height by 10 metres (m) from 150m to 160m and to install a 132kV transmission line to connect the wind farm to the electricity network. No changes to the location of wind turbines or project infrastructure is included in the modification application. The project layout showing the location of the 132kV can be viewed on the next page of this newsletter.

The modification will be lodged with the NSW Department of Planning and Environment in July 2018 and will be available to view on the Department's major projects web page.

## Community

The Flyers Creek Wind Farm Community Consultation Committee (CCC) continues to meet on a quarterly basis to discuss the project. The latest meeting was on 16th May 2018. Minutes of the meetings are available on the Infigen website:

[www.infigenenergy.com/flyers-creek](http://www.infigenenergy.com/flyers-creek)

## Mailing List

If you would like to be added to the Flyers Creek Wind Farm mailing list or update your details please contact

[megan.richardson@infigenenergy.com](mailto:megan.richardson@infigenenergy.com)

## CENREC

Infigen is grateful for the support of the Central NSW Renewable Energy Co-operative (CENREC). This community-led co-operative was formed in October 2012 with a primary purpose to enable community investment in the local area, including the Flyers Creek Wind Farm project. More information is available at:

[www.cenrec.com.au](http://www.cenrec.com.au)







*Infigen was pleased to sponsor part of the Carcoar Annual Show in October 2017.*

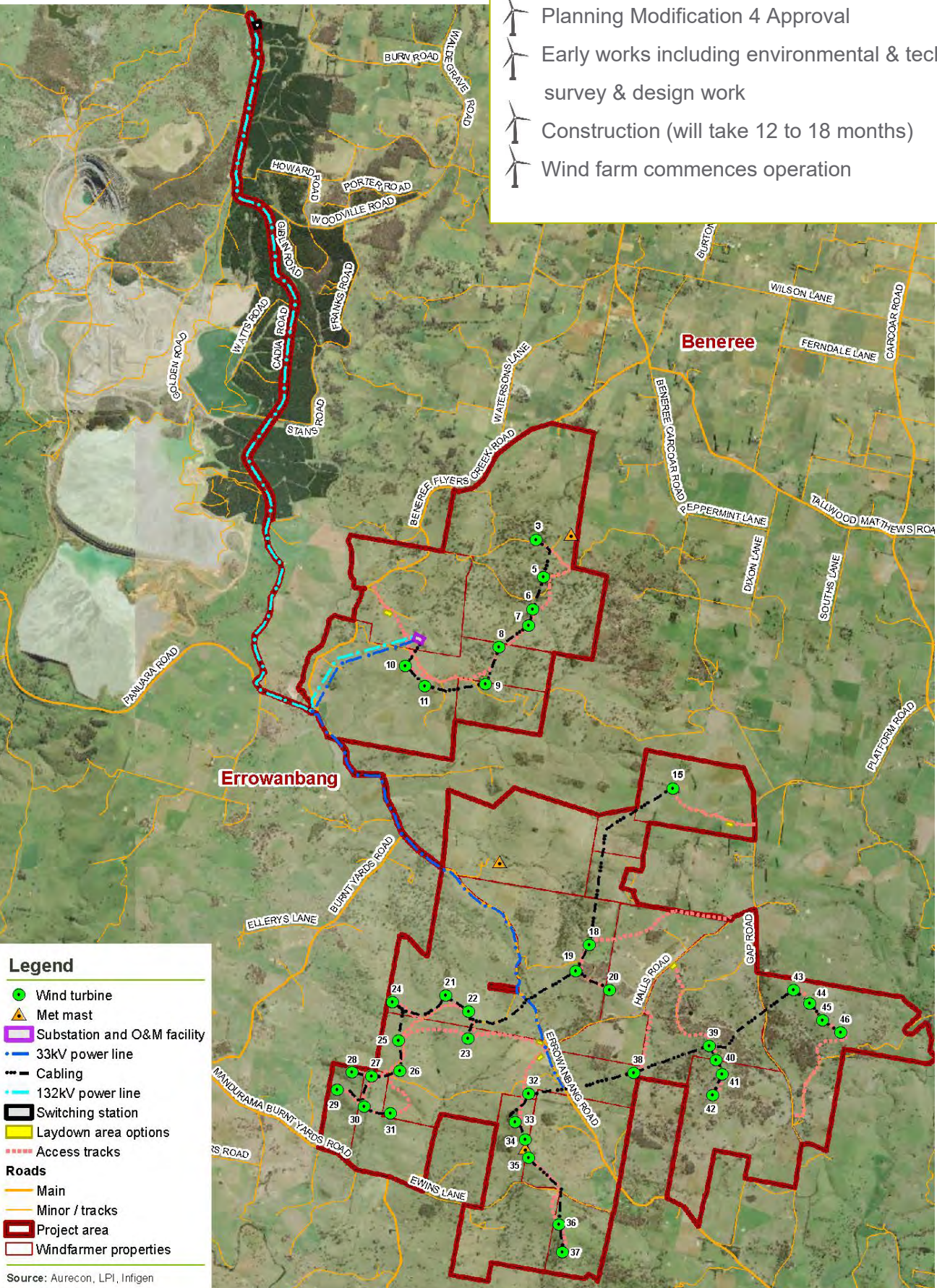
<b>Number of Wind Turbines</b>	<b>38</b>
Approximate installed capacity	140 - 155 MW
Maximum wind turbine tip height	160 m
Estimated annual generation	~ 430 GWh
Equivalent number of houses powered per annum	~ 58,000

Our generation, your future

# Flyers Creek Wind Farm

## Project Milestones

-  Planning Modification 4 Approval
-  Early works including environmental & technical survey & design work
-  Construction (will take 12 to 18 months)
-  Wind farm commences operation



Please contact us if you have any questions or would like to meet to discuss the project.

Ph: 02-8031-9900

E: [megan.richardson@infigenenergy.com](mailto:megan.richardson@infigenenergy.com)

W: [www.infigenenergy.com](http://www.infigenenergy.com)

Our generation, your future